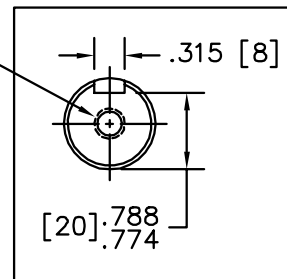


PULLEY END DETAIL

OMIT LOCKWASHER & COAT UNDER SCREW HEAD WITH SEALER BEFORE INSTALLING.

APPLY COAT OF SEALER TO HOUSING BEFORE PRESSING IN SEAL. SEAL MUST BE PRESSED W/LIP OUT.

M8 x 1.25 TAP  
 .75 [19] DEEP



KEYWAY DETAIL

CUSTOMER IS RESPONSIBLE FOR DETERMINING THAT BALDOR'S PRODUCT WILL PERFORM SUITABLY IN THE INTENDED APPLICATION.

REV. DESC: REMOVE RED FROM PULLEY END DESCRIPTION		
REV. LTR: G	VERSION: 03	TDR: 00000877506
FILE: \AAA\00050\737	REVISED: 02:40:36 10/24/2014	BY: ENFRAJO
MTL: -		

**BALDOR**

VER D90SD, LD TEFC M F2 W/SEAL, SHORT STYLE PUEP  
 SH 1 of 1