

# PRODUCT INFORMATION PACKET



Model No: C215K17FB73A

Catalog No: 141311.00

..10HP..1740RPM.215TZ.TEFC.230V.1PH.60HZ.CONT.40C.1.15SF.RIGID.C215K17FB73A.....

Crop Dryer



Regal and Leeson are trademarks of Regal Beloit Corporation or one of its affiliated companies.

©2018 Regal Beloit Corporation, All Rights Reserved. MC017097E



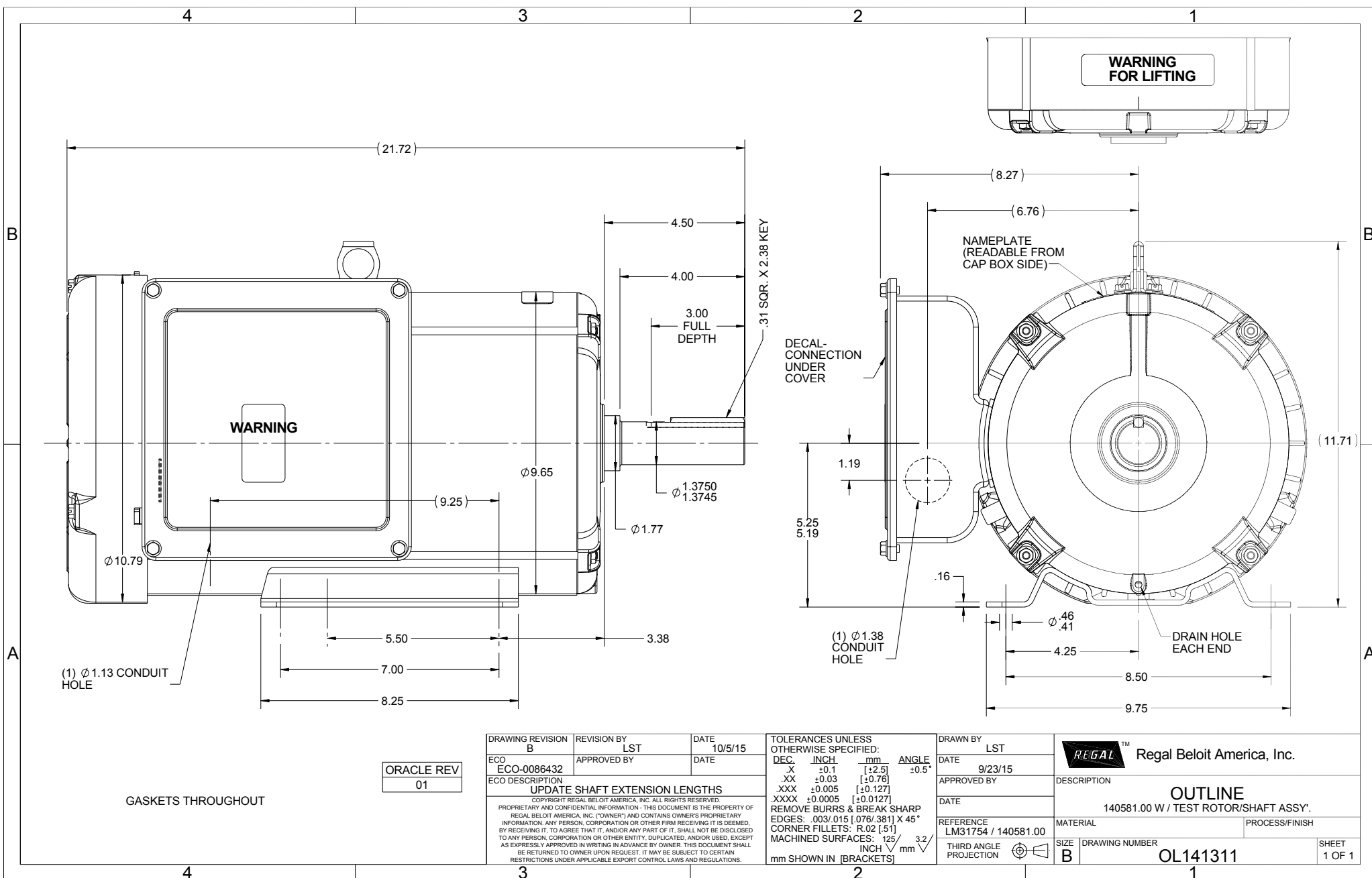


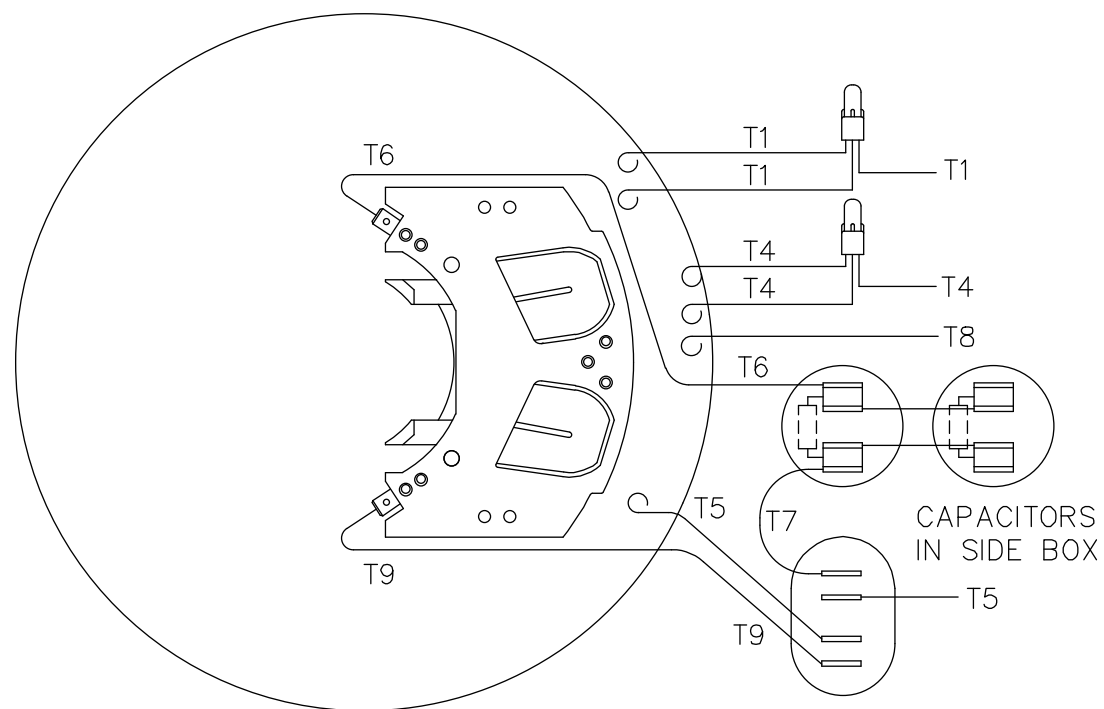
## Nameplate Specifications

Output HP	<b>10 Hp</b>	Output KW	<b>7.5 kW</b>
Frequency	<b>60 Hz</b>	Voltage	<b>230 V</b>
Current	<b>40.0 A</b>	Speed	<b>1740 rpm</b>
Service Factor	<b>1.15</b>	Phase	<b>1</b>
Efficiency	<b>86.5 %</b>	Duty	<b>Continuous</b>
Insulation Class	<b>F</b>	Design Code	<b>NO DESIGN CODE</b>
KVA Code	<b>G</b>	Frame	<b>215TZ</b>
Enclosure	<b>Totally Enclosed Fan Cooled</b>	Overload Protector	<b>No</b>
Ambient Temperature	<b>40 °C</b>	Drive End Bearing Size	<b>6209</b>
Opp Drive End Bearing Size	<b>6206</b>	UL	<b>Recognized</b>
CSA	<b>Y</b>	CE	<b>Y</b>
IP Code	<b>43</b>		

## Technical Specifications

Electrical Type	<b>Capacitor Start Capacitor Run</b>	Starting Method	<b>Across The Line</b>
Poles	<b>4</b>	Rotation	<b>Selective Counterclockwise</b>
Mounting	<b>Rigid base</b>	Motor Orientation	<b>HORIZONTAL</b>
Drive End Bearing	<b>BALL</b>	Opp Drive End Bearing	<b>BALL</b>
Frame Material	<b>Rolled Steel</b>	Shaft Type	<b>T</b>
Overall Length	<b>21.72 in</b>	Frame Length	<b>14.00 in</b>
Shaft Diameter	<b>1.375 in</b>	Shaft Extension	<b>4.5 in</b>
Assembly/Box Mounting	<b>F1 ONLY</b>		
Outline Drawing	<b>OL141311</b>	Connection Diagram	<b>005462.02</b>

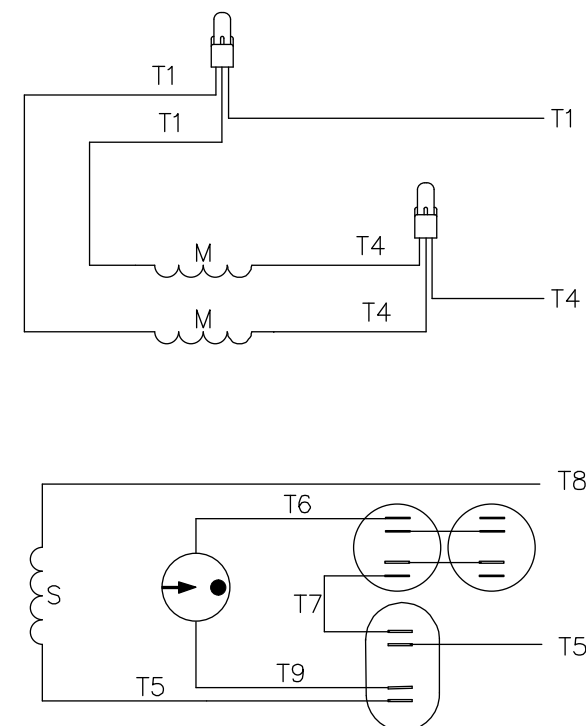




VIEW FROM OUTSIDE OF  
MOTOR AT SWITCH END

CAUTION:  
LEAD WIRE INSULATION TO  
EXTEND MIN. OF 1/4" INTO  
CONNECTOR INSULATION

## LINE LEADS



ROTATION  
FACING  
LEAD END

L1

L2

JOIN &  
INSULATE

C.C.W.

T1,T8

T4,T5

---

C.W.

T1,T5

T4,T8

---

TOLERANCES  
UNLESS SPECIFIED

DEC. INCHES

.X ±.1

.XX ±.01

.XXX ±.005

.XXXX ±.0005

ANG ±1/2"



ELECTRIC MOTORS  
GEARMOTORS  
AND DRIVES

DRAWN RDW 10/21/02

CHK

APPD

SCALE 1=2

REF 005462-01

FMF 140581

PREV

TITLE

EXTERNAL WIRING DIAGRAM  
TYPE "K" W/O PROTECTOR

MAT'L.

DECAL 004018

FINISH

NO.

REVISION

BY &amp; DATE

CHK

RFP

10/21/02

CAD FILE

00546202

SIZE

A

DRAWING NO.

005462-02

REV.

THIS DRAWING IN DESIGN AND DETAIL IS OUR PROPERTY AND MUST NOT BE USED EXCEPT  
IN CONNECTION WITH OUR WORK ALL RIGHTS OF DESIGN AND INVENTION ARE RESERVED  
THIS IS AN ELECTRONICALLY GENERATED DOCUMENT - DO NOT SCALE THIS PRINT

DIST

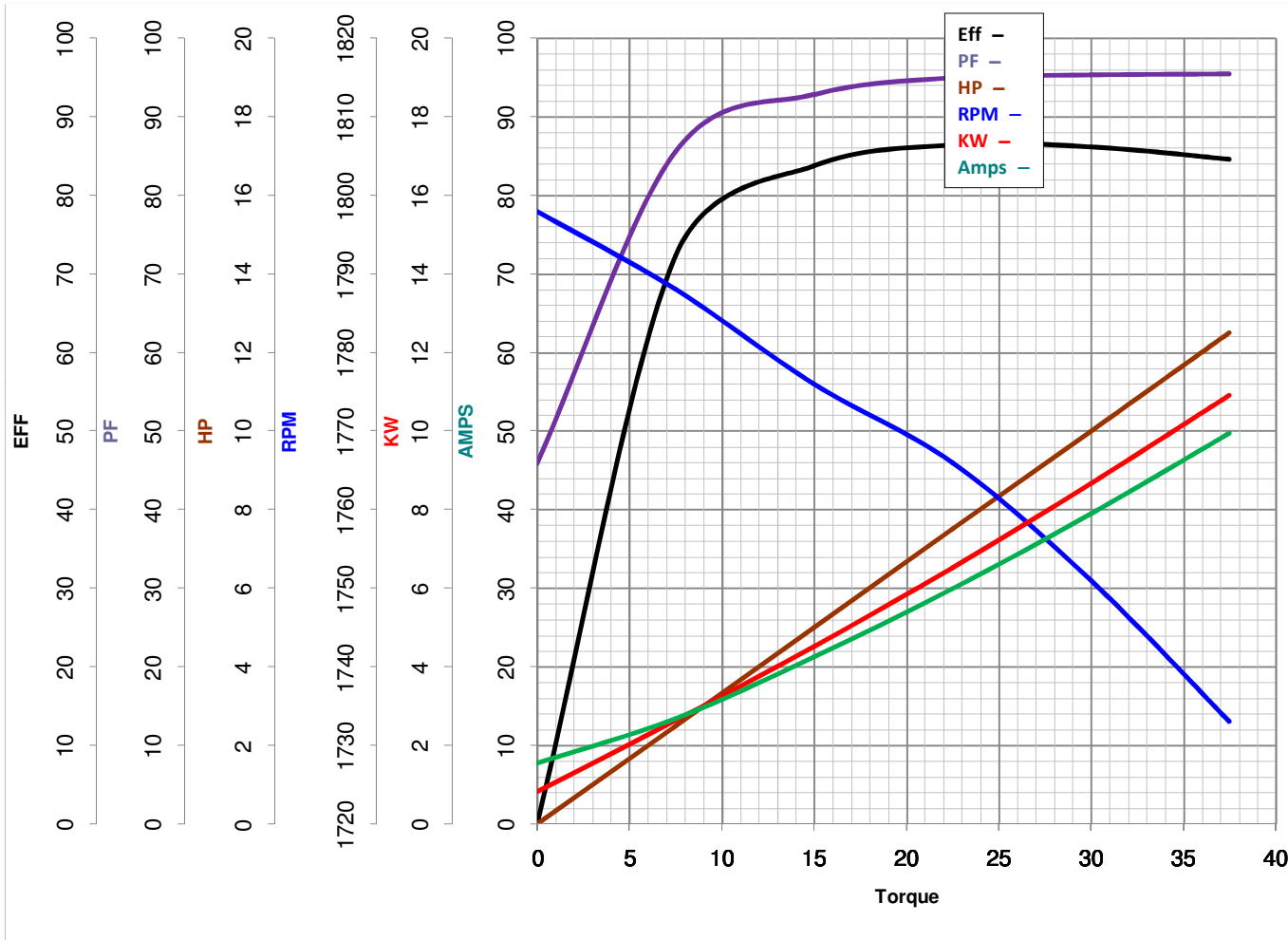


# LEESON ELECTRIC CORPORATION

## TYPICAL PERFORMANCE CURVE for AC MOTOR

Model No 141311.00Catalog No 141311.00

Curve at

230  
60  
10Volts  
HZ  
HPHP 10.00VOLTS 230HZ 60PHASE 1RPM 1740

Torque in Lb.Ft

FL TORQUE 30 Lb.Ft  
 BD TORQUE 69.5 Lb.Ft  
 LR TORQUE 90.2 Lb.Ft

FL AMPS 40  
 PU TORQUE 61.5 Lb.Ft  
 LR AMPS 264

WINDING K9425-2

Date 4/23/2018