

PRODUCT INFORMATION PACKET



Model No: 119527.00
Catalog No: 119527.00
1 HP Washdown Motor, 3 phase, 1800 RPM, 208-230/460 V, 56C Frame, TENV
Paint Free NEMA Washdown Motors



Regal and Leeson are trademarks of Regal Beloit Corporation or one of its affiliated companies.
©2019 Regal Beloit Corporation, All Rights Reserved. MC017097E

The Regal logo is located in the bottom right corner. It features the word "REGAL" in a bold, white, sans-serif font, set against a dark gray rectangular background with a slight 3D effect.

REGAL



Nameplate Specifications

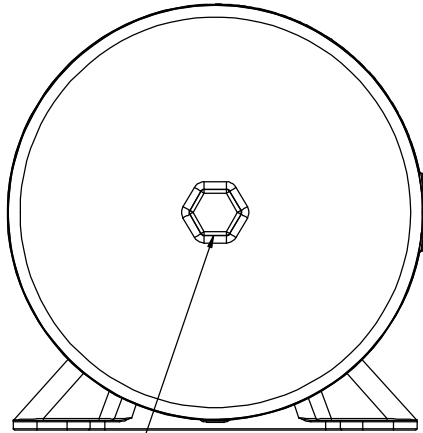
| | | | |
|------------------------|---------------|----------------------------|---------------------------------|
| Output HP | 1 Hp | Output KW | 0.75 kW |
| Frequency | 60 Hz | Voltage | 208-230/460 V |
| Current | 3.2-3.2/1.6 A | Speed | 1760 rpm |
| Service Factor | 1.15 | Phase | 3 |
| Efficiency | 85.5 % | Power Factor | 68.5 |
| Duty | Continuous | Insulation Class | F |
| Design Code | B | KVA Code | N |
| Frame | 56C | Enclosure | Totally Enclosed Non Ventilated |
| Thermal Protection | No | Ambient Temperature | 40 °C |
| Drive End Bearing Size | 6205 | Opp Drive End Bearing Size | 6205 |
| UL | Recognized | CSA | Y |
| CE | Y | IP Code | 69 |

Technical Specifications

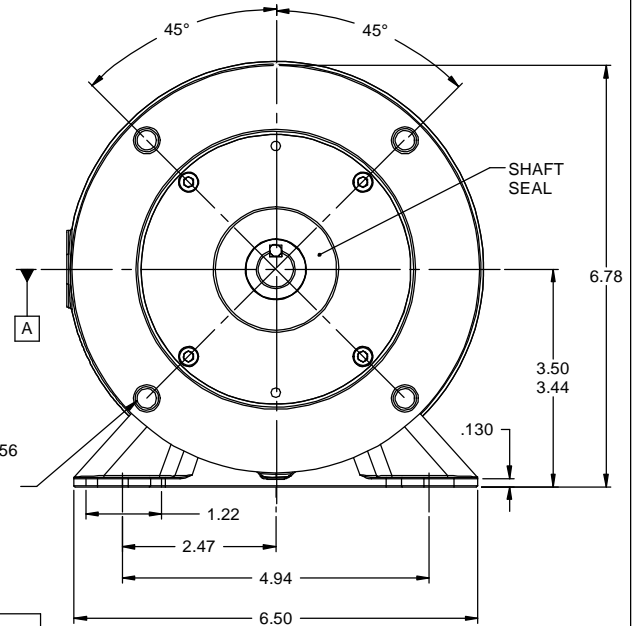
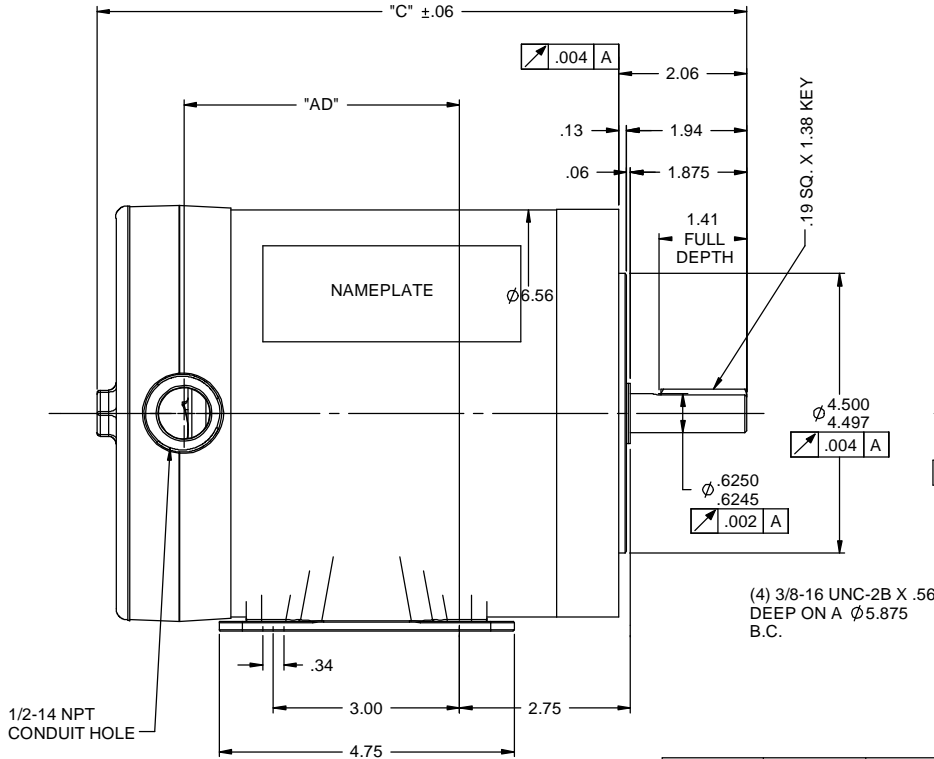
| | | | |
|-----------------------|------------------------------|-----------------------|------------------|
| Electrical Type | Squirrel Cage Inverter Rated | Starting Method | Line Or Inverter |
| Poles | 4 | Rotation | Reversible |
| Resistance Main | 12.96 Ohms | Mounting | Rigid Base |
| Motor Orientation | Horizontal | Drive End Bearing | Ball |
| Opp Drive End Bearing | Ball | Frame Material | Stainless Steel |
| Shaft Type | NEMA 56 | Overall Length | 12.22 in |
| Frame Length | 7.00 in | Shaft Diameter | 0.625 in |
| Shaft Extension | 2.06 in | Assembly/Box Mounting | F1 ONLY |

This is an uncontrolled document once printed or downloaded and is subject to change without notice. Date Created:01/11/2019

RBC PROPRIETARY AND CONFIDENTIAL INFORMATION
This document is the property of REGAL BELOIT CORPORATION ("RBC") including its subsidiaries and divisions and contains proprietary information of RBC. This document is loaned on the express condition that neither it nor the information contained therein shall be disclosed to others without the express written consent of RBC, and that the information shall be used by the recipient only as approved expressly by RBC. This document shall be returned to RBC upon its request. This document may be subject to certain restrictions under U.S. export control laws and regulations.



3/4" HEX DRIVER
FOR COVER REMOVAL



| DASH NO | "C" | "AD" |
|---------|-------|------|
| 525 | 10.47 | 4.44 |
| 550 | 10.72 | 4.69 |
| 575 | 10.97 | 4.94 |
| 600 | 11.22 | 5.19 |
| 625 | 11.47 | 5.44 |
| 650 | 11.72 | 5.69 |
| 675 | 11.97 | 5.94 |
| 700 | 12.22 | 6.19 |
| 725 | 12.47 | 6.44 |
| 750 | 12.72 | 6.69 |
| 775 | 12.97 | 6.94 |

| | | | | | |
|----|----------|--------------------------------|-------------------|------------------|-------------------|
| | | TOLERANCES UNLESS SPECIFIED | | DRAWN LST 9/9/09 | |
| | | DEC INCHES | | CHK | |
| | | X ±.1 | | APPR | |
| | | XX ±.03 | | SCALE 1:2 | |
| | | XXX ±.005 | | REF | |
| | | XXXX ±.0005 | | FMF | |
| NO | REVISION | BY & DATE | CHK | ANG ±1/2° | FINISH |
| | | | RFP | PREV | SIZE B |
| | | | NETWORK FILE NAME | | DRAWING NO 028767 |
| | | | | | PAGE OF |
| | | | | | REV |



TITLE OUTLINE 56C FRAME
TENV RIGID "C"

MATL

THIRD ANGLE
PROJECTION

