

PRODUCT INFORMATION PACKET



Model No: A6T34XK25A

Catalog No: 119436.00

..1HP..3600RPM.56C.EPFC.230/460V.3PH.60HZ.CONT.40C.1.00SF.RIGID C FACE.....GENERAL
PURPOSE.AUTO.....

Explosion Proof



Regal and Leeson are trademarks of Regal Beloit Corporation or one of its affiliated companies.

©2018 Regal Beloit Corporation, All Rights Reserved. MC017097E



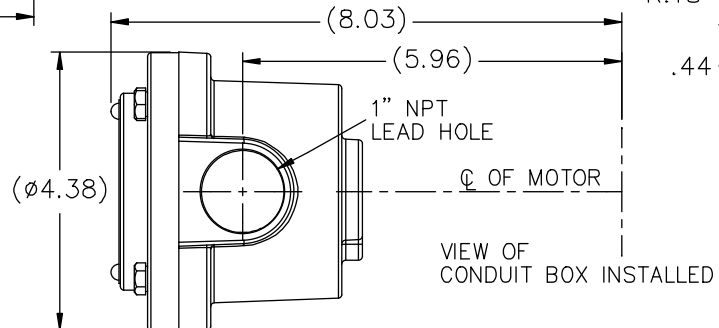
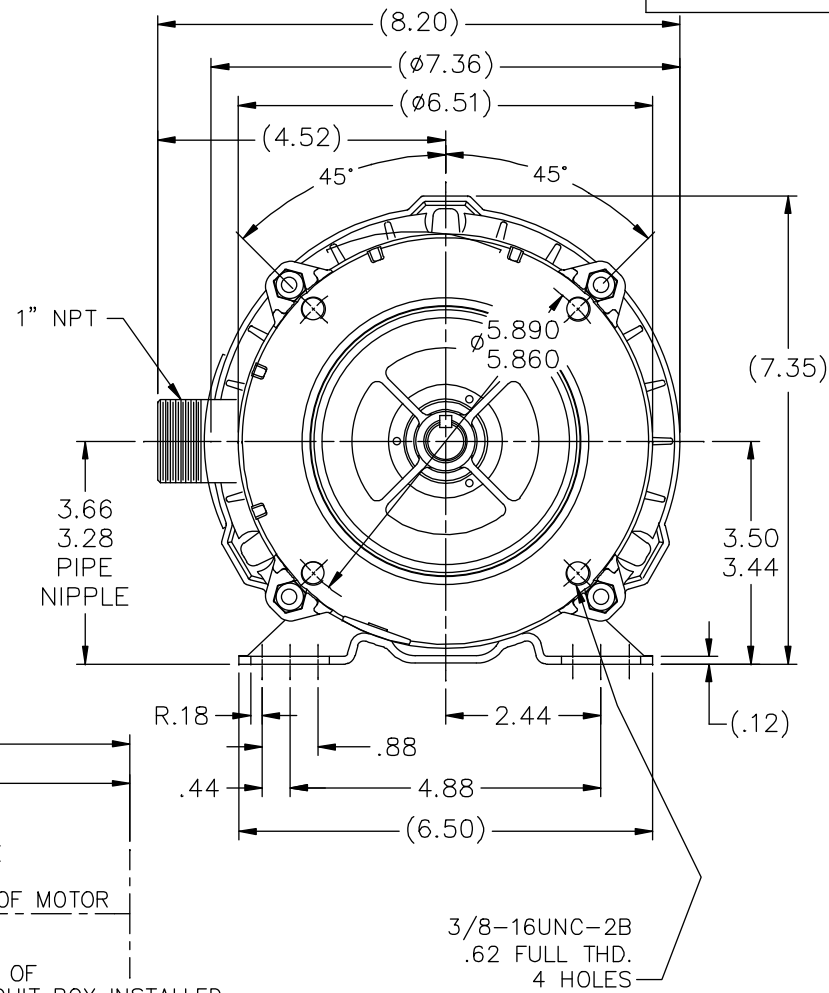
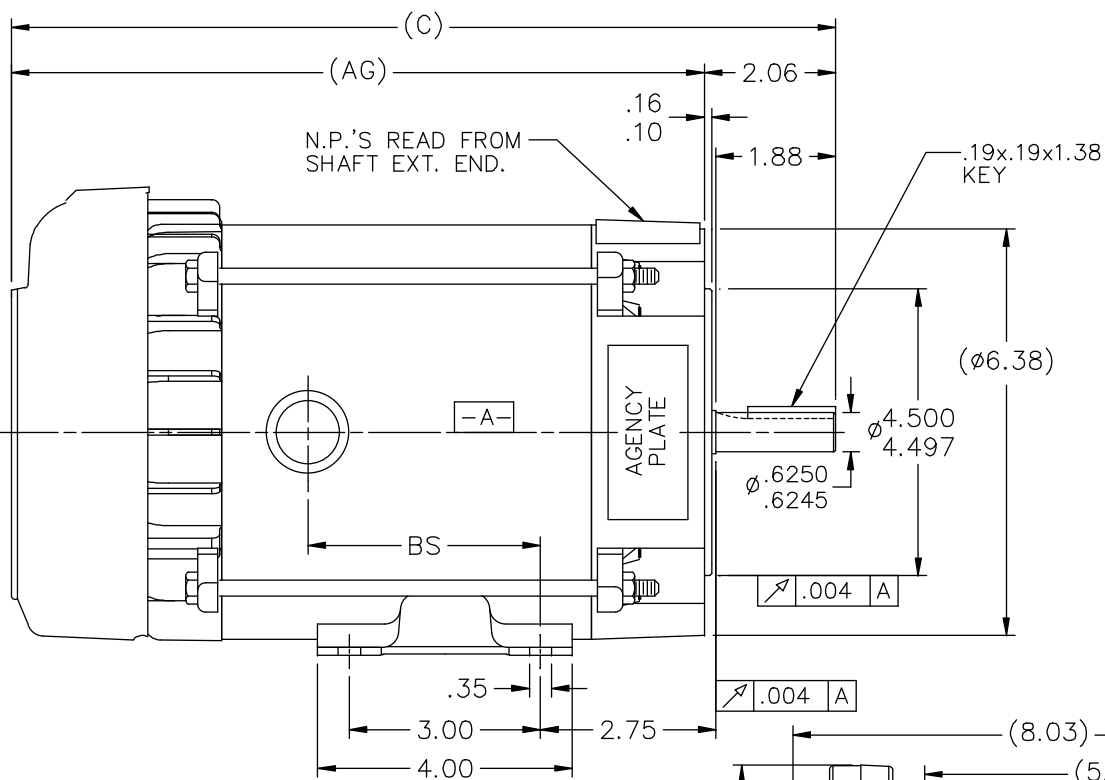


Nameplate Specifications

| | | | |
|----------------------------|-----------------------------------|------------------------|-------------------|
| Output HP | 1 Hp | Output KW | 0.75 kW |
| Frequency | 60 Hz | Voltage | 230/460 V |
| Current | 3.0/1.5 A | Speed | 3450 rpm |
| Service Factor | 1 | Phase | 3 |
| Efficiency | 80 % | Duty | Continuous |
| Insulation Class | B | Design Code | B |
| KVA Code | K | Frame | 56C |
| Enclosure | Explosion Proof Fan cooled | Overload Protector | Automatic |
| Ambient Temperature | 40 °C | Drive End Bearing Size | 6203 |
| Opp Drive End Bearing Size | 6203 | UL | Recognized |
| CSA | Y | CE | N |
| IP Code | 54 | | |

Technical Specifications

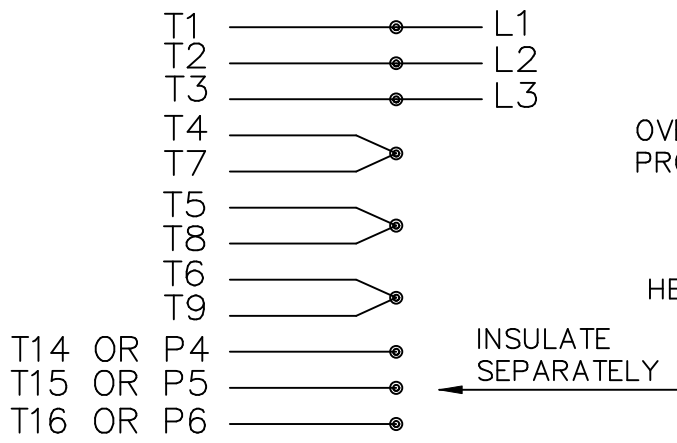
| | | | |
|-----------------------|------------------------------------|-----------------------|------------------------|
| Electrical Type | Squirrel Cage Induction Run | Starting Method | Across The Line |
| Poles | 2 | Rotation | Reversible |
| Mounting | Rigid base | Motor Orientation | HORIZONTAL |
| Drive End Bearing | BALL | Opp Drive End Bearing | BALL |
| Frame Material | Rolled Steel | Shaft Type | NEMA 56 |
| Overall Length | 13.94 in | Frame Length | 6.81 in |
| Shaft Diameter | 0.625 in | Shaft Extension | 1.88 in |
| Assembly/Box Mounting | F1 ONLY | | |
| Outline Drawing | B-104191LE-681 | Connection Diagram | EE7335-LE |



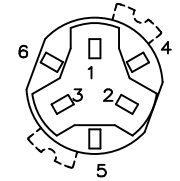
| DASH | (C) | (AG) | BS | | |
|------|-------|-------|------|--|--|
| 631 | 13.44 | 11.38 | 4.15 | | |
| 681 | 13.94 | 11.88 | 4.65 | | |
| 731 | 14.44 | 12.38 | 5.15 | | |
| 781 | 14.94 | 12.88 | 5.65 | | |
| 831 | 15.44 | 13.38 | 6.15 | | |
| 881 | 15.94 | 13.88 | 6.65 | | |
| 931 | 16.44 | 14.38 | 7.15 | | |
| 981 | 16.94 | 14.88 | 7.65 | | |

| | | TOLERANCES UNLESS SPECIFIED | | LEESON ELECTRIC MOTORS GEARMOTORS AND DRIVES | | DRAWN HLB 05-29-2002 | |
|--|--|-----------------------------|------------|--|-------------------|----------------------|--------------------------|
| | | DEC. | INCHES | | | CHK | ML 05-31-2002 |
| | | .X | ±.1 | TITLE OUTLINE - 'C' FACE | | APPD | SAS 05-31-2002 |
| 3 | COND. BOX INSTALLED VIEW UPDATED PER ECR-0044571 | UD | 10/15/13 | ST | .XX ±.03 | SCALE | 1=2 |
| 2 | REVISED C'BOX PER CN 40784A | JJB | 02/26/2007 | ML | .XXX ±.005 | REF | |
| 1 | NEW DRAWING | HLB | 05-31-2002 | | .XXXX ±.0005 | FMF | |
| NO. | REVISION | BY & DATE | | CHK | ANG ±1/2' | FINISH | PREV |
| THIS DRAWING IN DESIGN AND DETAIL IS OUR PROPERTY AND MUST NOT BE USED EXCEPT IN CONNECTION WITH OUR WORK ALL RIGHTS OF DESIGN AND INVENTION ARE RESERVED THIS IS AN ELECTRONICALLY GENERATED DOCUMENT - DO NOT SCALE THIS PRINT | | | | RFP | CAD FILE 104191LE | SIZE | DRAWING NO. PAGE OF REV. |
| | | | | DIST | WP | B | 104191LE 3 |

HIGH VOLTAGE CONNECTIONS

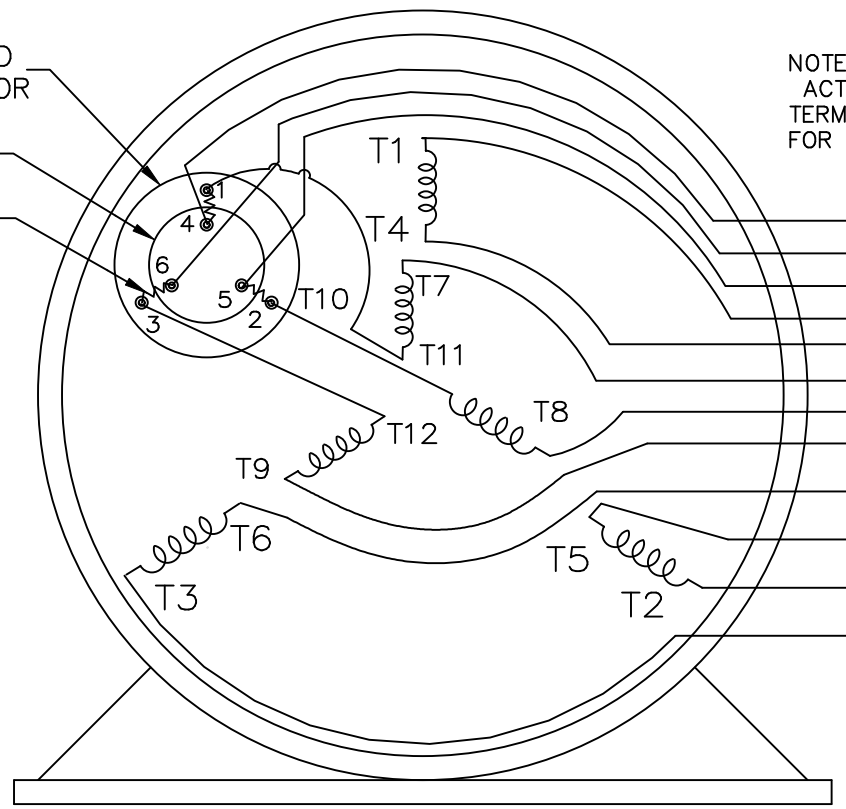


THREE PHASE - DUAL VOLTAGE MOTOR WITH OVERLOAD PROTECTOR



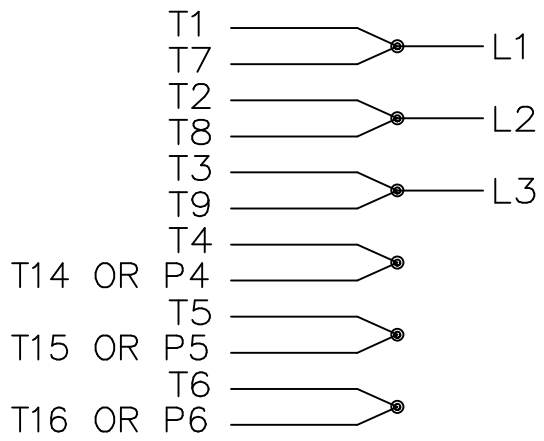
NOTE:
ACTUAL PROTECTORS
TERMINAL LOCATIONS
FOR LEAD CONNECTIONS

OVERLOAD PROTECTOR
DISC
HEATER



T14 OR P4
T16 OR P6
T15 OR P5

LOW VOLTAGE CONNECTIONS



VIEW OF TERMINAL END

T2K
T4D
T6AN

| | | | | | | | | |
|-----|----------|-----------|-----|-----------------------------|------------|---|--------------------------|-----------------|
| | | | | TOLERANCES UNLESS SPECIFIED | | ELECTRIC MOTORS GEARMOTORS AND DRIVES | DRAWN NJS 04-20-2005 | |
| | | | | DEC. | INCHES | | CHK ML 04-20-2005 | |
| | | | | .X | ± - | | APPD MJS 04-20-2005 | |
| | | | | .XX | ± - | | SCALE | |
| | | | | .XXX | ± - | | REF | |
| | | | | .XXXX | ± - | MAT'L. | | |
| | | | | ANG | ± - | FINISH | | |
| NO. | REVISION | BY & DATE | CHK | ANG | ± - | TITLE CONNECTION DIAGRAM 3φ- DUAL VOLTAGE W/OVERLOAD PROTECTOR | | FMF |
| | | | | RFP | 04-20-2005 | CAD FILE EE7335_LE | | PREV |
| | | | | DIST WP | | SIZE A | DRAWING NO. EE7335-LE | PAGE OF REV. |



CERTIFICATION DATA SHEET

P.O. BOX 8003
WAUSAU, WI 54401-8003
PH. 715-675-3311

DATA VOLTS: 460

CONN. DIAGRAM: EET7335-LE
OUTLINE: B-104191LE-681
WINDING: Z1270

CAT #: 119436.00

R14 1

TYPICAL MOTOR PERFORMANCE DATA

| HP | KW | SYNC RPM | FL RPM | FRAME | ENCLOSURE | TYPE | KVA CODE | DESIGN | | |
|--------------|-------|-----------------|---------------|-----------------|-----------------|-------------|-------------|-----------------|-------|--|
| 1 | 0.75 | 3600 | 3500 | 56C | EPFC | TFR | K | B | | |
| PH | HZ | VOLTS | AMPS | START TYPE | DUTY | INSL | S.F. | AMB | ELEV. | |
| 3 | 60/50 | 230/460#190/380 | 3/1.582/6/1.3 | ACROSS THE LINE | CONT | B | 1.15 | 40 | 3300 | |
| F.L. EFF | | 3/4 LD EFF | 78.0 | 1/2 LD EFF | 75.0 | GTD EFF | ELECT. TYPE | | | |
| F.L. PF | | 83.5 | 3/4 LD PF | 78.0 | 1/2 LD PF | 67.5 | 77.0 | SQ CAGE IND RUN | | |
| F.L. TORQUE | | LR AMPS @ 460 V | | L.R. TORQUE | | B.D. TORQUE | | F.L. RISE (°C) | | |
| 1.50 LB-FT | | 11.0 | | 3.5 LB-FT | | 233% | | 5.3 LB-FT | | |
| PRESSURE @ 3 | | POWER | ROTOR WK² | MAX LOAD WK² | SAFE STALL TIME | STARTS/HOUR | MOTOR WGT | | | |
| 68 DBA | | 77 DBA | 0.03 LB-FT² | 0 LB-FT² | 10 SEC. | 0 | 32 LB. | | | |

*** SUPPLEMENTAL INFORMATION ***

| DE BRACKET TYPE | ODE BRACKET TYPE | MOUNT TYPE | MOTOR ORIENTATION | SEVERE DUTY | HAZARDOUS LOCATION | DRIIP COVER | SCREENS | PAINT |
|-----------------|------------------|--------------|-------------------|--------------|------------------------|--------------------------|---------------|----------------|
| C-FACE | STANDARD | RIGID | HORIZONTAL | NO | DEF CL IGR C&D CL IIGF | NO | NONE | BLUE (POWDER) |
| BEARINGS | | GREASE | SHAFT TYPE | SPECIAL DE | SPECIAL ODE | SHAFT | MATERIAL | FRAME MATERIAL |
| DE BALL | BALL | POLYREX EM | STANDARD 56 | NONE | NONE | 1144 STRESSPROOF (C-223) | | ROLLED STEEL |
| 6203 | 6203 | | | | | | | |
| THERMOSTATS | | PROTECTORS | WDG RTD's | BRG RTD's | THERMISTORS | CONTROL | SPACE HEATERS | |
| NONE | | AUTOMATIC | NONE | NONE | NONE | FALSE | NA | |
| R1 (ohms/ph) | R2 (ohms/ph) | X1 (ohms/ph) | X2 (ohms/ph) | Xm (ohms/ph) | VIBRATION (in/sec) | | FLOAT | |
| 11.332 | 5.652 | 15.08 | 17.608 | 406.12 | 0.150 | | ODE | |

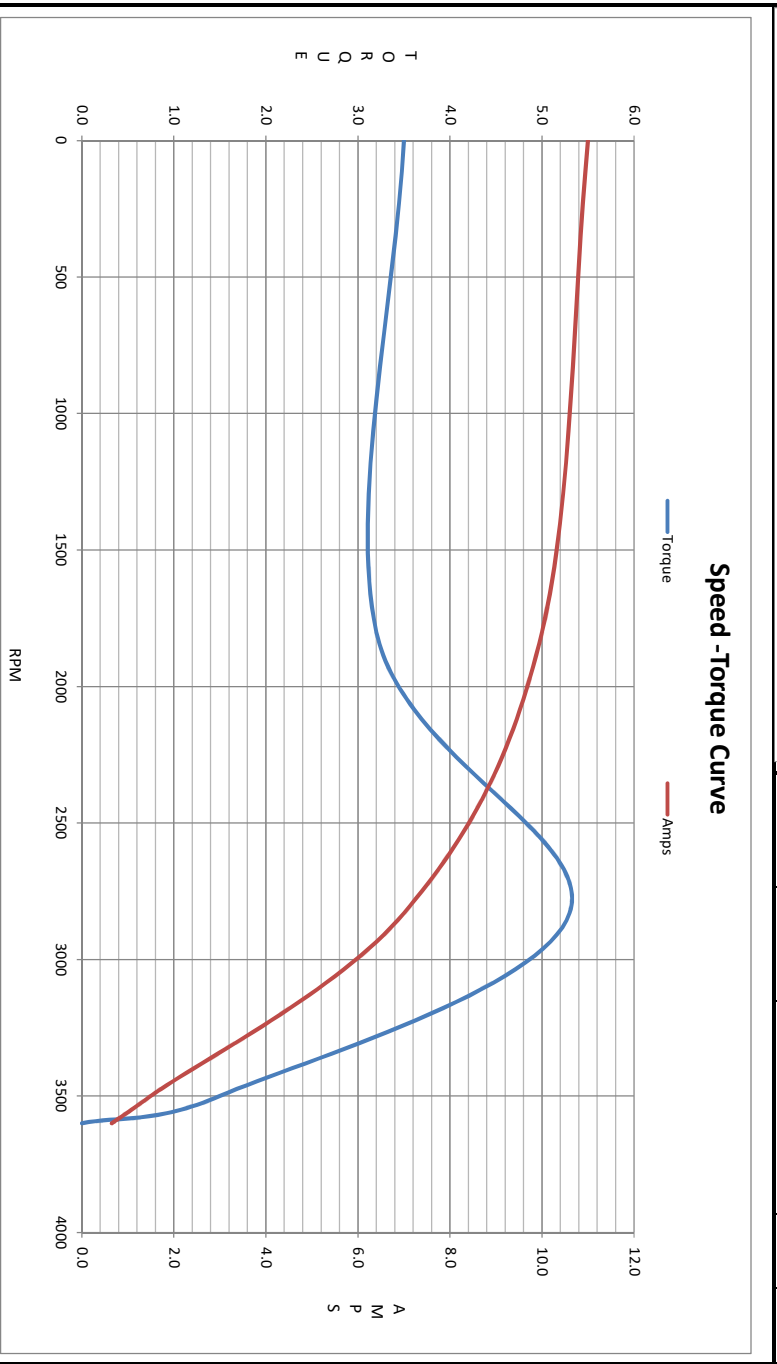
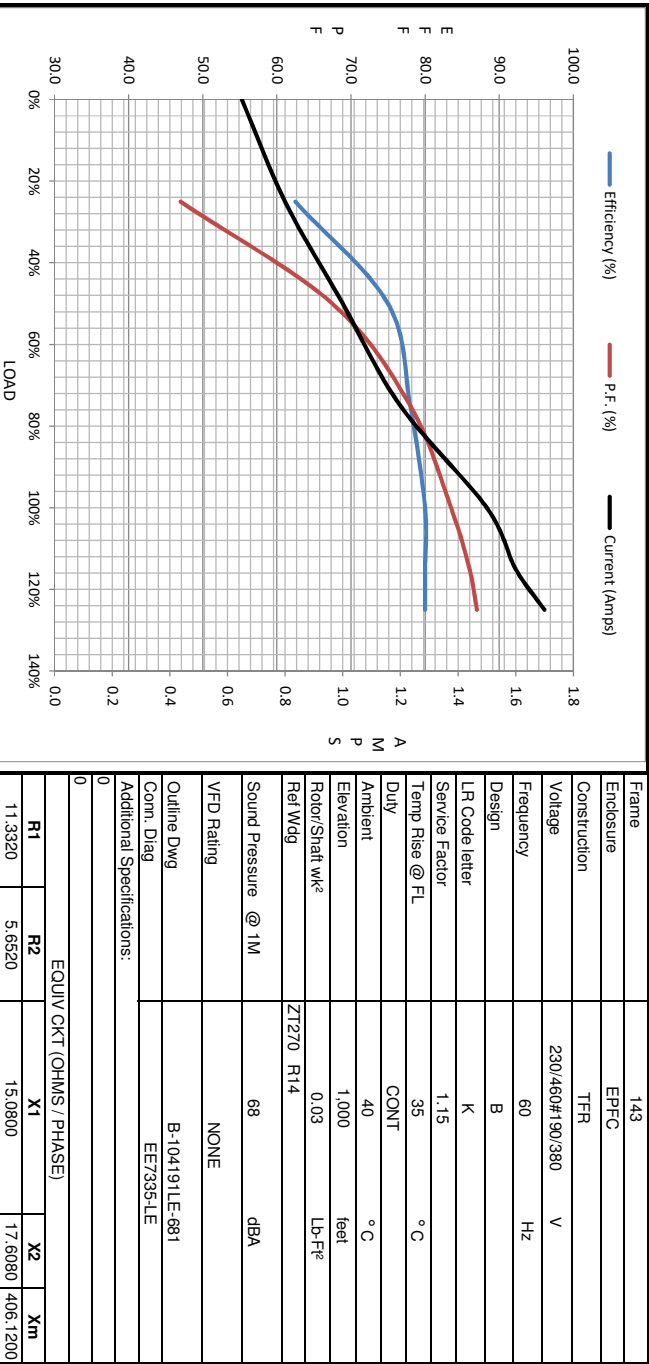
| | | | |
|---------------|--|---------------------------|--|
| * N O T E S * | | INVERTER TORQUE: NONE | |
| | | INV. HP SPEED RANGE: NONE | |
| | | ENCODER: NONE | |
| | | BRAKE: NONE | |
| | | FT-LB: NA | |
| | | VOLTAGE: NONE | |
| | | NONE PPR | |

| | | | |
|-------|----------|----------|-----|
| DATE: | 2/5/2018 | UL: NONE | HZ: |
|-------|----------|----------|-----|



| Motor Load Data | | | | | | | | | |
|-----------------|------|------|------|------|------|------|------|------|--|
| Load | 0% | 25% | 50% | 75% | 100% | 115% | 125% | LR | |
| Current (Amps) | 0.65 | 0.80 | 1.00 | 1.20 | 1.50 | 1.60 | 1.70 | 11.0 | |
| Torque (ft-lb) | 0.00 | 0.38 | 0.75 | 1.10 | 1.50 | 1.70 | 1.90 | 3.5 | |
| RPM | 3600 | 3570 | 3550 | 3525 | 3500 | 3490 | 3480 | 0 | |
| Efficiency (%) | | 62.5 | 75.0 | 78.0 | 80.0 | 80.0 | 80.0 | | |
| P.F. (%) | | 47.0 | 67.5 | 78.0 | 83.5 | 86.0 | 87.0 | 66.0 | |

| Motor Speed Data | | | | | | Information Block | | | | | | | | | | | | | | | | | | | | | |
|------------------|------|---------|------|-------|------|-------------------|-----------|-------|-----------|--------------|-----------------|-----------|--------|----------------|----------------|----------------|------|---------|-----------|-----------------------------|-----------|---------------------|------------|----------------|------------|----------------------------|--|
| | LR | Pull-Up | BD | Rated | Idle | HP | Sync. RPM | Frame | Enclosure | Construction | Voltage | Frequency | Design | LR Code letter | Service Factor | Temp Rise @ FL | Duty | Ambient | Elevation | Rotor/Shaft wk ² | Rel Wdg | Sound Pressure @ 1M | VFD Rating | Outline Dwg | Conn. Diag | Additional Specifications: | |
| Speed (RPM) | 0 | 1800 | 2830 | 3500 | 3600 | | 3600 | 143 | EPFC | TFR | 230/460#190/380 | 60 | B | K | 1.15 | 35 | CONT | 40 °C | 1,000 | 0.03 | Z1270 R14 | 68 | NONE | B-104191LE-681 | EET335-LE | | |
| Current (Amps) | 11.0 | 10.0 | 7.0 | 1.50 | 0.65 | | | | | | | | | | | | | | | | | | | | | | |
| Torque (ft-lb) | 3.5 | 3.2 | 5.3 | 1.50 | 0.00 | | | | | | | | | | | | | | | | | | | | | | |



| EQUIV CKT (OHMS / PHASE) | | | |
|--------------------------|--------|---------|----------|
| R1 | R2 | X1 | Xm |
| 11.3320 | 5.6520 | 15.0800 | 17.6080 |
| | | | 406.1200 |