

PRODUCT INFORMATION PACKET



Model No: A145T17XC9A

Catalog No: 122174.00

..2HP..1800RPM.145TC.EPFC.230/460V.3PH.60HZ.CONT.40C.1.00SF.C FACE.....GENERAL
PURPOSE.AUTO.....

Explosion Proof



Regal and Leeson are trademarks of Regal Beloit Corporation or one of its affiliated companies.

©2018 Regal Beloit Corporation, All Rights Reserved. MC017097E



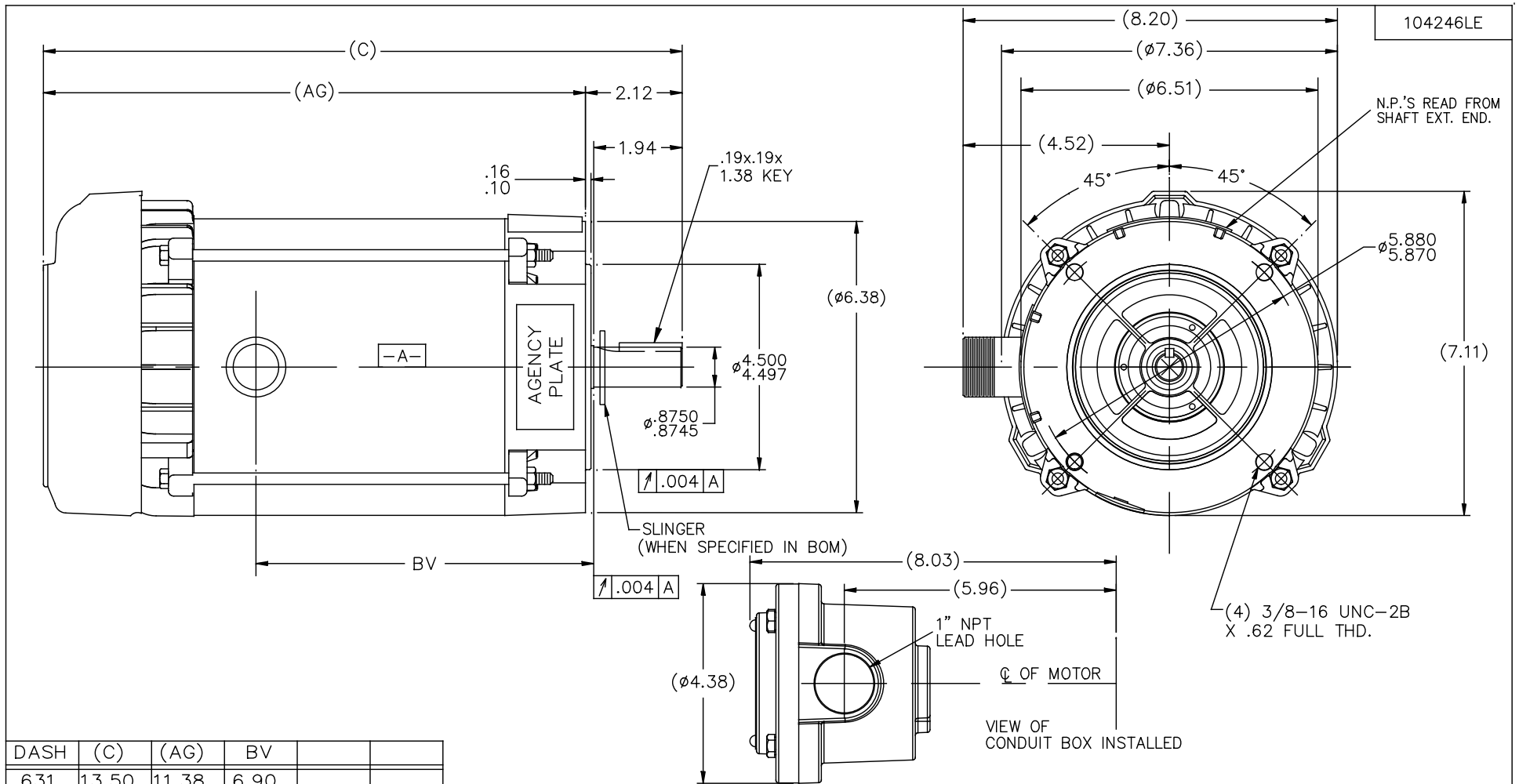


Nameplate Specifications

Output HP	2 Hp	Output KW	1.5 kW
Frequency	60 Hz	Voltage	230/460 V
Current	6.0/3.0 A	Speed	1760 rpm
Service Factor	1	Phase	3
Efficiency	86.5 %	Duty	Continuous
Insulation Class	B	Design Code	B
KVA Code	N	Frame	145TC
Enclosure	Explosion Proof Fan cooled	Overload Protector	Automatic
Ambient Temperature	40 °C	Drive End Bearing Size	6205
Opp Drive End Bearing Size	6203	UL	Recognized
CSA	N	CE	N
IP Code	54		

Technical Specifications

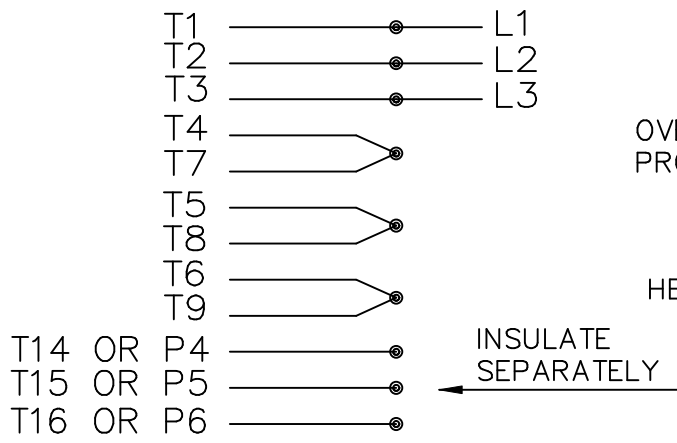
Electrical Type	Squirrel Cage Induction Run	Starting Method	Across The Line
Poles	4	Rotation	Reversible
Mounting	Round	Motor Orientation	HORIZONTAL
Drive End Bearing	BALL	Opp Drive End Bearing	BALL
Frame Material	Rolled Steel	Shaft Type	T
Overall Length	16.50 in	Frame Length	9.31 in
Shaft Diameter	0.875 in	Shaft Extension	2.25 in
Assembly/Box Mounting	F1 ONLY		
Outline Drawing	B-104246LE-931	Connection Diagram	EE7335-LE



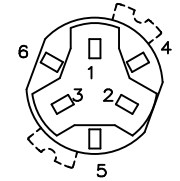
DASH	(C)	(AG)	BV		
631	13.50	11.38	6.90		
681	14.00	11.88	7.40		
731	14.50	12.38	7.90		
831	15.50	13.38	8.90		
881	16.00	13.88	9.40		
931	16.50	14.38	9.90		
981	17.00	14.88	10.40		

		TOLERANCES UNLESS SPECIFIED				DRAWN R/W 01-12-2005		
		DEC.	INCHES			CHK	ML 01-12-2005	
		.X	±.1			APPD	ET 01-12-2005	
		.XX	±.03			SCALE	1=2	
2	COND. BOX INSTALLED VIEW UPDATED PER ECR-0044571	UD	10/17/13	ST	.XXX ±.005	TITLE OUTLINE - C"FACE	REF	MU64088
1	REVISED C'BOX PER CN 40784A	JJB	02/26/2007	ML	.XXXX ±.0005	140 FR. - EXP.PR.	FIN	
NO.	REVISION	BY & DATE		CHK	ANG ±7'30"	MAT'L	FINISH	PREV
THIS DRAWING IN DESIGN AND DETAIL IS OUR PROPERTY AND MUST NOT BE USED EXCEPT IN CONNECTION WITH OUR WORK ALL RIGHTS OF DESIGN AND INVENTION ARE RESERVED THIS IS AN ELECTRONICALLY GENERATED DOCUMENT - DO NOT SCALE THIS PRINT				RFP	01-12-2005	CAD FILE 1042461e	SIZE	DRAWING NO. PAGE OF REV.
				DIST	WP		B	104246LE 2

HIGH VOLTAGE CONNECTIONS

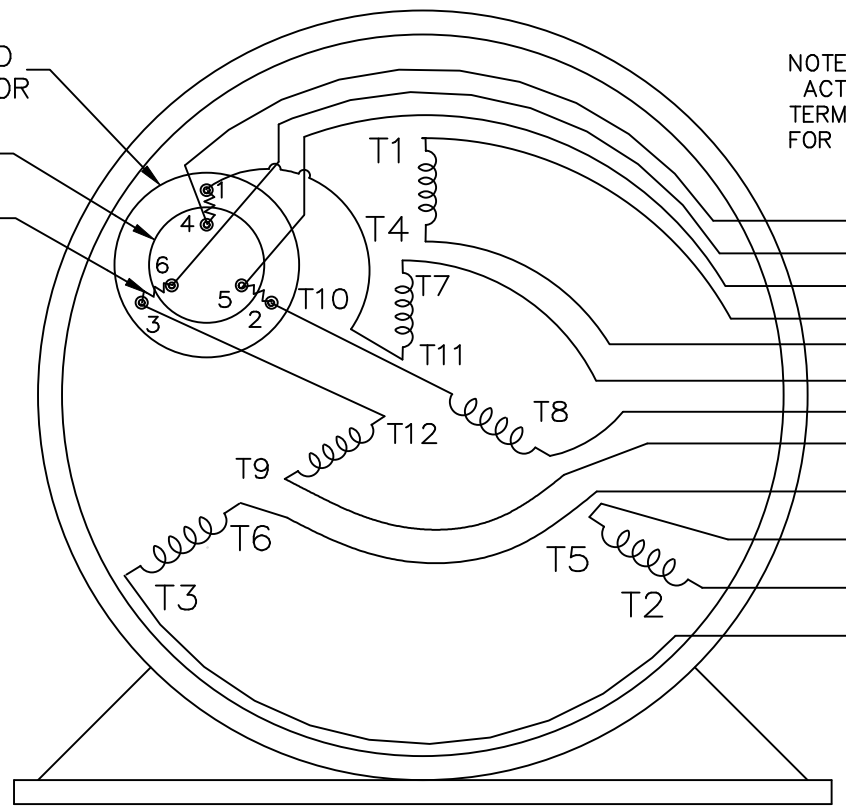


THREE PHASE – DUAL VOLTAGE MOTOR WITH OVERLOAD PROTECTOR



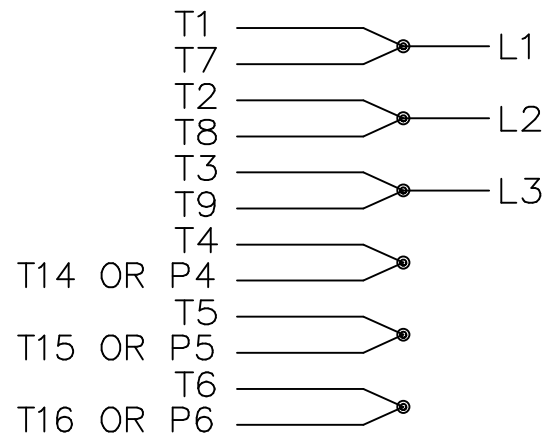
NOTE:
 ACTUAL PROTECTORS
 TERMINAL LOCATIONS
 FOR LEAD CONNECTIONS

OVERLOAD PROTECTOR
 DISC
 HEATER



T14 OR P4
 T16 OR P6
 T15 OR P5

LOW VOLTAGE CONNECTIONS



VIEW OF TERMINAL END

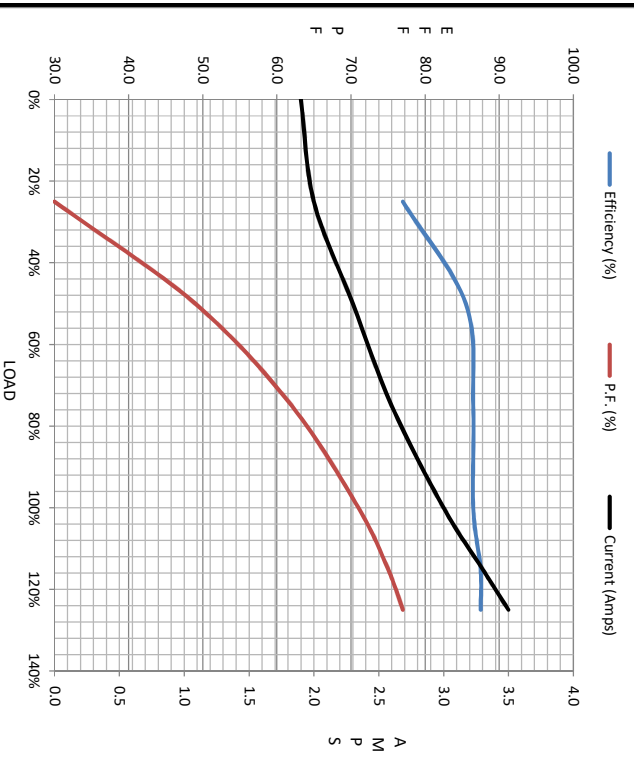
T2K
 T4D
 T6AN

				TOLERANCES UNLESS SPECIFIED		ELECTRIC MOTORS GEARMOTORS AND DRIVES	DRAWN NJS 04-20-2005	
				DEC.	INCHES		CHK ML 04-20-2005	
				.X	± -		APPD MJS 04-20-2005	
				.XX	± -		SCALE	
				.XXX	± -		REF	
				.XXXX	± -	MAT'L.		
NO.	REVISION	BY & DATE	CHK	ANG	± -	FINISH	PREV	
THIS DRAWING IN DESIGN AND DETAIL IS OUR PROPERTY AND MUST NOT BE USED EXCEPT IN CONNECTION WITH OUR WORK ALL RIGHTS OF DESIGN AND INVENTION ARE RESERVED THIS IS AN ELECTRONICALLY GENERATED DOCUMENT - DO NOT SCALE THIS PRINT				RFP	04-20-2005	CAD FILE EE7335_LE	SIZE A	DRAWING NO. EE7335-LE
				DIST	WP			PAGE OF
								REV.



Motor Load Data								
Load	0%	25%	50%	75%	100%	115%	125%	LR
Current (Amps)	1.90	2.00	2.30	2.60	3.0	3.3	3.5	30.5
Torque (ft-lb)	0.00	1.50	3.0	4.5	6.0	6.9	7.5	24.5
HPM	1800	1790	1780	1770	1760	1755	1750	0
Efficiency (%)		77.0	85.5	86.5	86.5	87.5	87.5	
P.F. (%)	7.0	30.0	49.0	62.0	71.0	75.0	77.0	71.0

Motor Speed Data						Information Block																				
Speed (RPM)	LR	Pull-Up	BD	Rated	Idle	HP	Sync. RPM	Frame	Enclosure	Construction	Voltage	Frequency	Design	LR Code letter	Service Factor	Temp Rise @ FL	Duty	Ambient	Elevation	Rotor/Shaft wk ²	Ref Wdg	Sound Pressure @ 1M	VFD Rating	Outline Dwg	Conn. Diag	Additional Specifications:
0	115	1200	1760	1800	1800	2.0	1800	145	TEFC	TFR	230/460#190/380	60	A	N	1.15	45	CONT	40	1,000	0.14	Z14255 FR	62	NONE	B-104246LE-931	EE7335-LE	
Current (Amps)	30.5	29.5	19.5	3.0	1.90																					
Torque (ft-lb)	24.5	23.7	33.2	6.0	0.00																					



EQUIV CKT (OHMS / PHASE)			
R1	R2	X1	Xm
3.9620	3.0100	5.7510	5.9360 160.3460

