

# PRODUCT INFORMATION PACKET



Model No: C213T11NB3A

Catalog No: 140601.00

..3HP..1200RPM.213T.TENV.230/460V.3PH.60HZ.CONT.40C.1.15S.F..RIGID.....BRAKEMOTOR.....

Brake



Regal and Leeson are trademarks of Regal Beloit Corporation or one of its affiliated companies.

©2018 Regal Beloit Corporation, All Rights Reserved. MC017097E





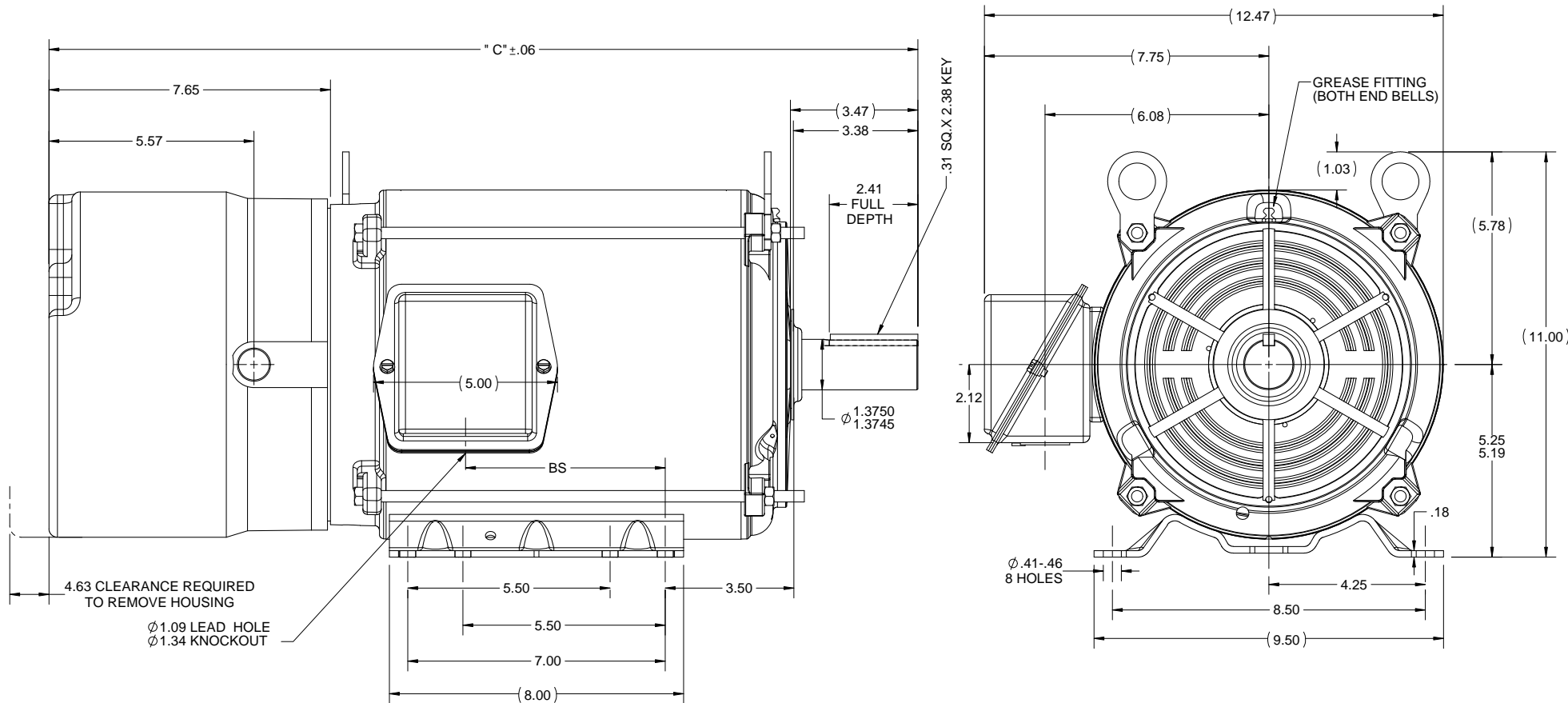
## Nameplate Specifications

Output HP	3 Hp	Output KW	2.2 kW
Frequency	60 Hz	Voltage	230/460 V
Current	9.0/4.5 A	Speed	1170 rpm
Service Factor	1.15	Phase	3
Efficiency	89.5 %	Duty	Continuous
Insulation Class	F	Design Code	B
KVA Code	K	Frame	213T
Enclosure	Totally Enclosed Non Ventilated	Overload Protector	No
Ambient Temperature	40 °C	Drive End Bearing Size	6307
Opp Drive End Bearing Size	6307	UL	Recognized
CSA	Y	CE	Y
IP Code	43		

## Technical Specifications


Electrical Type	Squirrel Cage Induction Run	Starting Method	Across The Line
Poles	6	Rotation	Reversible
Mounting	Rigid base	Motor Orientation	HORIZONTAL
Drive End Bearing	BALL	Opp Drive End Bearing	BALL
Frame Material	Rolled Steel	Shaft Type	T
Overall Length	25.12 in	Frame Length	9.65 in
Shaft Diameter	1.375 in	Shaft Extension	3.38 in
Assembly/Box Mounting	F1 ONLY		
Outline Drawing	OL140601-1115	Connection Diagram	005010.15

**E**



DASH NO.	"C"	BS
1115	25.12	6.93

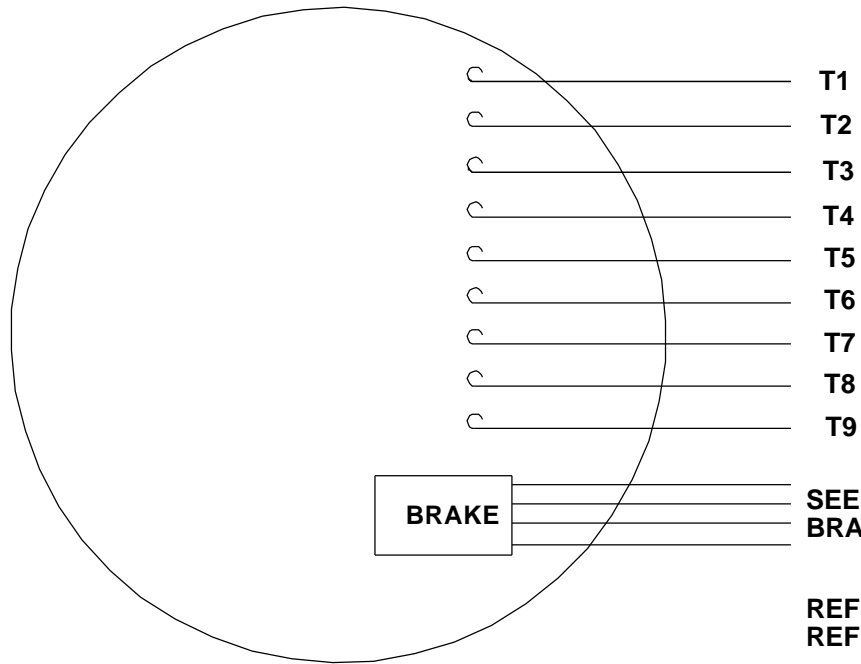
- NOTES:
1. NAMEPLATE TO BE READ FROM CONDUIT BOX SIDE OF MOTOR.
  2. CONDUIT BOX CAN ROTATED IN 90° STEPS.
  3. CONDUIT BOX CAN BE MOUNTED ON OPPOSITE SIDE BY REMOVING BRACKETS AND TURNING FRAME 180° (EXCEPT AS NOTED.)

DRAWING REVISION A		REVISION BY MYG	DATE 06/19/2017	TOLERANCES UNLESS OTHERWISE SPECIFIED:		DRAWN BY MYG		<div> Regal Beloit America, Inc.</div>	
ECO ECO-0089364		APPROVED BY SR	DATE 06/19/2017	DEC.    INCH    mm    ANGLE .X    ±0.1    [±2.5] .XX    ±0.03    [±0.76] .XXX    ±0.005    [±0.127] .XXXX    ±0.0005    [±0.0127]		DATE 06/19/2017		DESCRIPTION	
ECO DESCRIPTION NEW DRAWING				REMOVE BURRS & BREAK SHARP EDGES: 0.015 [0.076/381] X 45° CORNER FILLETS: R.02 [51] MACHINED SURFACES: 200 / 5.1		REFERENCE 037632		MATERIAL	
COPYRIGHT REGAL BELOIT AMERICA, INC. ALL RIGHTS RESERVED. PROPRIETARY AND CONFIDENTIAL INFORMATION: THIS DOCUMENT IS THE PROPERTY OF REGAL BELOIT AMERICA, INC. ("OWNER") AND CONTAINS OWNER'S PROPRIETARY INFORMATION. ANY PERSON, CORPORATION OR OTHER FIRM RECEIVING IT IS DEEMED, BY ACCEPTING IT, TO AGREE THAT, AND/OR ANY PART OF IT, SHALL NOT BE DISCLOSED TO ANY PERSON, CORPORATION OR OTHER ENTITY, DUPLICATED, AND/OR USED, EXCEPT AS EXPRESSLY APPROVED IN WRITING IN ADVANCE BY OWNER. THIS DOCUMENT SHALL BE RETURNED TO OWNER UPON REQUEST. IT MAY BE SUBJECT TO CERTAIN RESTRICTIONS UNDER APPLICABLE EXERCISE CONTROL, LAWS AND REGULATIONS.				INCH    mm mm SHOWN IN [BRACKETS]		THIRD ANGLE PROJECTION		PROCESS/FINISH	
SIZE    DRAWING NUMBER OL140601								SHEET 1 OF 1	

VIEW FROM OUTSIDE OF MOTOR AT SWITCH END.

**CAUTION:**

**LEAD WIRE INSULATION TO EXTEND  
MINIMUM OF 1/4" INTO CONNECTOR  
INSULATION**

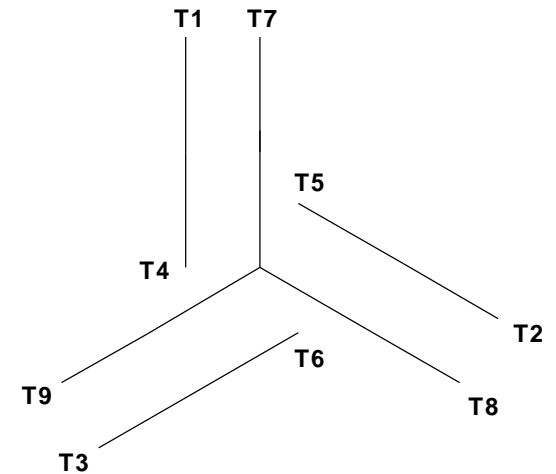


**SEE TABLE FOR  
BRAKE CONNECTIONS**

**REF. DECAL (MOTOR) - 004014**

**REF. DECAL (BRAKE) - 080034 (STEARNS & DINGS BRAKE)**

**LINE LEADS**




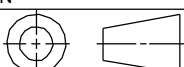
VOLTAGE	L1	L2	L3	JOIN & INSULATE
HIGH	T1	T2	T3	(T4, T7) (T5, T8) (T6, T9)
LOW	T1, T7	T2, T8	T3, T9	T4, T5, T6

**TYPE "T" W/O PROTECTOR**

BRAKE CONNECTION						
VOLTAGE	STERNS BRAKE			DINGS BRAKE		
	L1	L2	Join	L1	L2	Join
HIGH	1(RED)	2(RED)	3(BLACK) 4(BLACK)	2(BLACK)	4(YELLOW)	1(YELLOW) 3(BLACK)
LOW	1(RED) 3(BLACK)	2(RED) 4(BLACK)	-----	2(BLACK) 3(BLACK)	1(YELLOW) 4(YELLOW)	-----

**RBC PROPRIETARY AND CONFIDENTIAL INFORMATION**

This document is the property of REGAL BELOIT CORPORATION ("RBC") including its subsidiaries and divisions and contains proprietary information of RBC. This document is loaned on the express condition that neither it nor the information contained therein shall be disclosed to others without the express written consent of RBC, and that the information shall be used by the recipient only as approved expressly by RBC. This document shall be returned to RBC upon its request. This document may be subject to certain restrictions under U.S. export control laws and regulations.

				TOLERANCES UNLESS SPECIFIED			ELECTRIC MOTORS GEARMOTORS AND DRIVES		DRAWN JJK 09/17/96	
				DEC	INCHES				CHK	
				.X	±.1				APPR	
				.XX	±.01	TITLE EXTERNAL WIRING DIAGRAM		SCALE 1:1		
--	REDRAWN IN SOLIDWORKS	VJB 02/08/11		.XXX	±.005	STANDARD 3 PHASE - DUAL VOLTAGE		REF 005010-01		
01	ADDED DINGS AND BRAKE TABLE (PER CN114156)	TMZ 11/12/96		.XXXX	±.0005	MAT'L W/STEARNS OR DINGS DUAL VOLTAGE BRAKE CONN.		FMF		
NO	REVISION	BY & DATE	CHK	ANG	±1/2°	FINISH LEESON STOCK		PAGE OF		
<div>THIRD ANGLE PROJECTION</div> 			RFP		PREV		SIZE <b>A</b>	DRAWING NO		REV --
			NETWORK FILE NAME		00501015			005010-15		

Data Sheet

Date: 1/24/2018

140601.00



Data @ 460 V

Motor Load Data

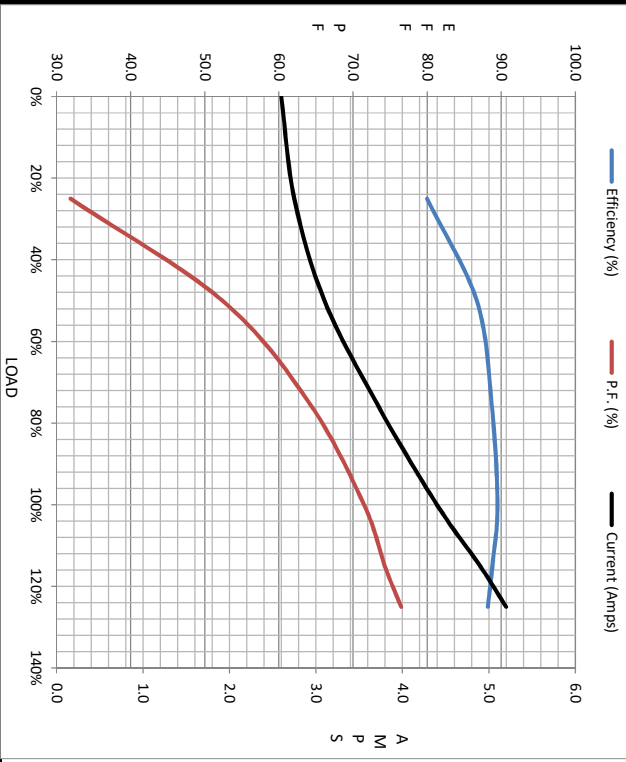
Load	0%	25%	50%	75%	100%	115%	125%	LR
Current (Amps)	2.60	2.75	3.1	3.7	4.4	4.9	5.2	32.0
Torque (ft-lb)	0.00	3.3	6.7	10.0	13.4	15.5	16.9	31.0
RPM	1200	1194	1188	1180	1175	1,170	1166	0
Efficiency (%)						88.8	88.2	
P.F. (%)	7.2	31.9	52.4	64.1	71.5	74.3	76.5	40.0

Motor Speed Data

	LR	Pull-Up	BD	Rated	Idle
Speed (RPM)	0	600	1025	1175	1200
Current (Amps)	32.0	28.0	20.0	4.4	2.50
Torque (ft-lb)	31.0	30.0	47.0	13.4	0.00

Information Block

HP	3.0
Sync. RPM	1200
Frame	213
Enclosure	TEFC
Construction	TFW
Voltage	230/460#190/380 V
Frequency	60 Hz
Design	B
LR Code letter	K
Service Factor	1.15
Temp Rise @ FL	45 °C
Duty	CONT
Ambient	40 °C
Elevation	1,000 feet
Rotor/Shaft wk²	0.80 Lb-Ft²
Rel Wdg	K213699 FW
Sound Pressure @ 1M	55 dBA
VFD Rating	NONE
Outline Dwg	TBD
Conn. Diag	005010.15
Additional Specifications:	
0	
EQUIV CKT (OHMS / PHASE)	
R1	R2
1.7210	1.5030
X1	X2
6.7130	7.1380
Xm	96.2080



Speed -Torque Curve

