

PRODUCT INFORMATION PACKET



Model No: C182T17FC43A

Catalog No: 132461.00

..3HP..1760RPM.182TC.TEFC.575V.3PH.60HZ.CONT.40C.1.15S.F..C FACE.C182T17FC36A.....
575 Volts



Regal and Leeson are trademarks of Regal Beloit Corporation or one of its affiliated companies.

©2018 Regal Beloit Corporation, All Rights Reserved. MC017097E





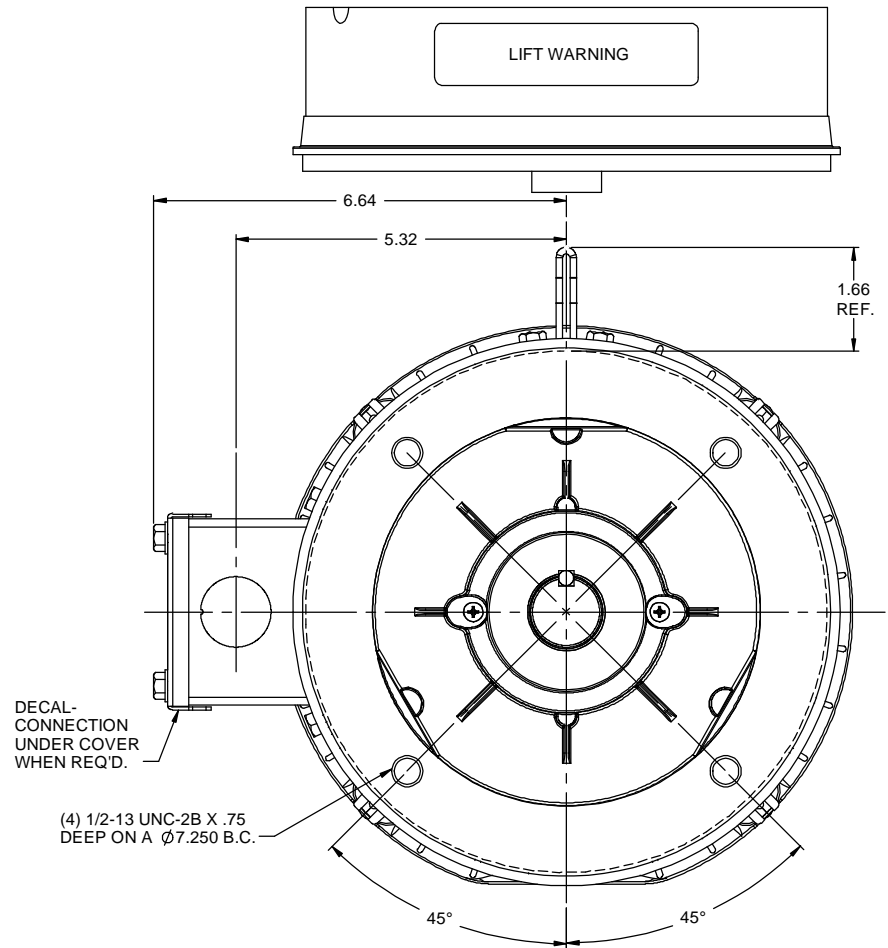
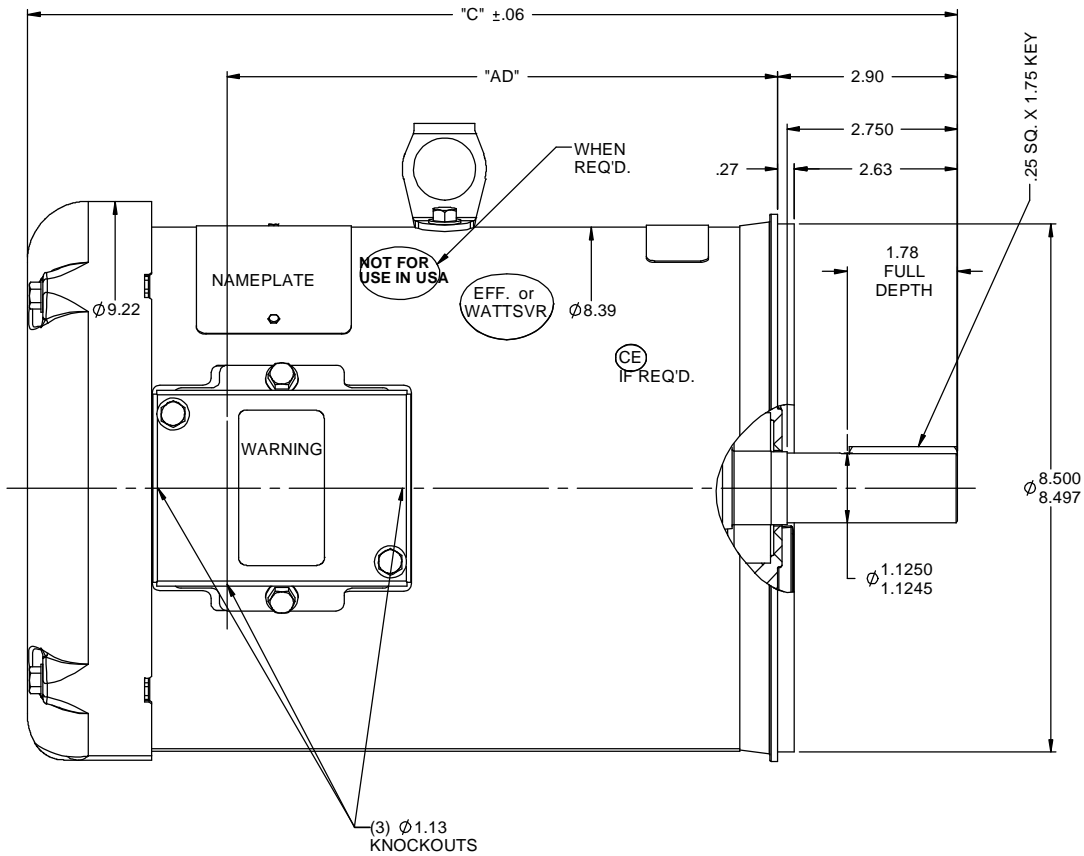
Nameplate Specifications

Output HP	3 Hp	Output KW	2.2 kW
Frequency	60 Hz	Voltage	575 V
Current	3.1 A	Speed	1770 rpm
Service Factor	1.15	Phase	3
Efficiency	89.5 %	Duty	Continuous
Insulation Class	F	Design Code	B
KVA Code	K	Frame	182TC
Enclosure	Totally Enclosed Fan Cooled	Overload Protector	No
Ambient Temperature	40 °C	Drive End Bearing Size	6206
Opp Drive End Bearing Size	6205	UL	Recognized
CSA	Y	CE	Y
IP Code	43		

Technical Specifications

Electrical Type	Squirrel Cage Induction Run	Starting Method	Across The Line
Poles	4	Rotation	Reversible
Mounting	Round	Motor Orientation	HORIZONTAL
Drive End Bearing	BALL	Opp Drive End Bearing	BALL
Frame Material	Rolled Steel	Shaft Type	T
Overall Length	13.97 in	Frame Length	8.50 in
Shaft Diameter	1.125 in	Shaft Extension	2.75 in
Assembly/Box Mounting	F1 ONLY		
Outline Drawing	035518-850	Connection Diagram	005102.01

RBC PROPRIETARY AND CONFIDENTIAL INFORMATION
 This document is the property of REGAL BELOIT CORPORATION ("RBC") including its subsidiaries and divisions and contains proprietary information of RBC. This document is loaned on the express condition that neither it nor the information contained therein shall be disclosed to others without the express written consent of RBC, and that the information shall be used by the recipient only as approved expressly by RBC. This document shall be returned to RBC upon its request. This document may be subject to certain restrictions under U.S. export control laws and regulations.



GASKETS THROUGHOUT
 MAXIMUM FACE RUNOUT TO BE .004 T.I.R.
 MAXIMUM PILOT ECCENTRICITY TO BE .004 T.I.R.
 PERMISSIBLE SHAFT RUNOUT TO BE .002 T.I.R.

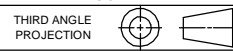
DASH NO.	"C"	"AD"
750	12.97	6.88
800	13.47	7.38
850	13.97	7.88
900	14.47	8.38
950	14.97	8.88
1000	15.47	9.38
1050	15.97	9.88
1100	16.47	10.38
1150	16.97	10.88

NO		REVISION	BY & DATE	CHK	LANG	±1/2°	FINISH	PREV	SIZE	DRAWING NO	REV
		UPDATED & REDRAWN IN SOLIDWORKS	LST 12/17/2009	XX	XXX	±.0005	GENERAL PURPOSE		B	035518	-



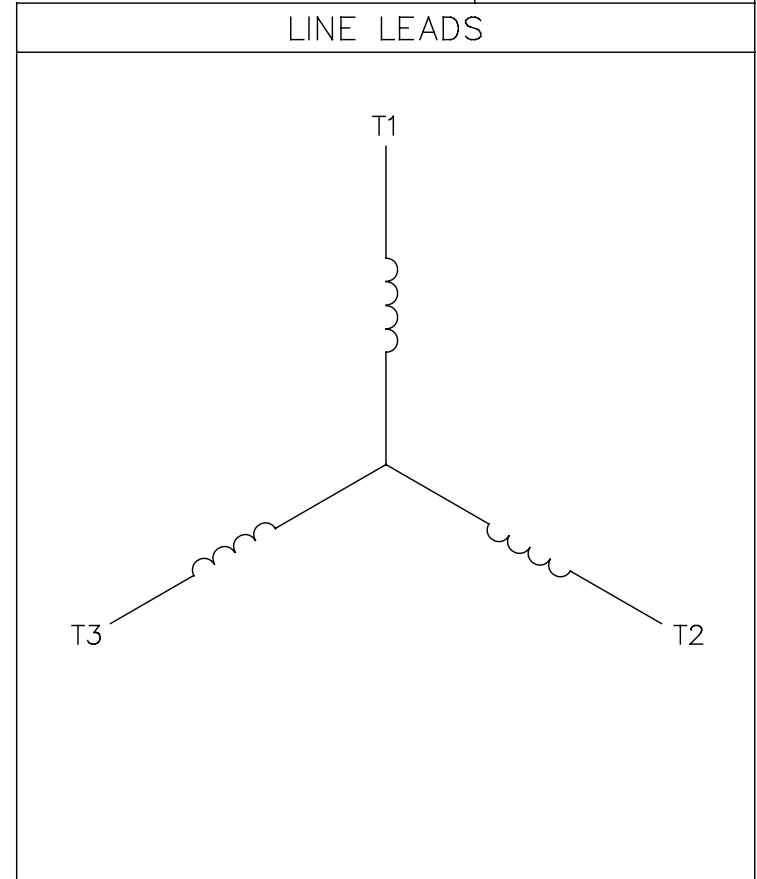
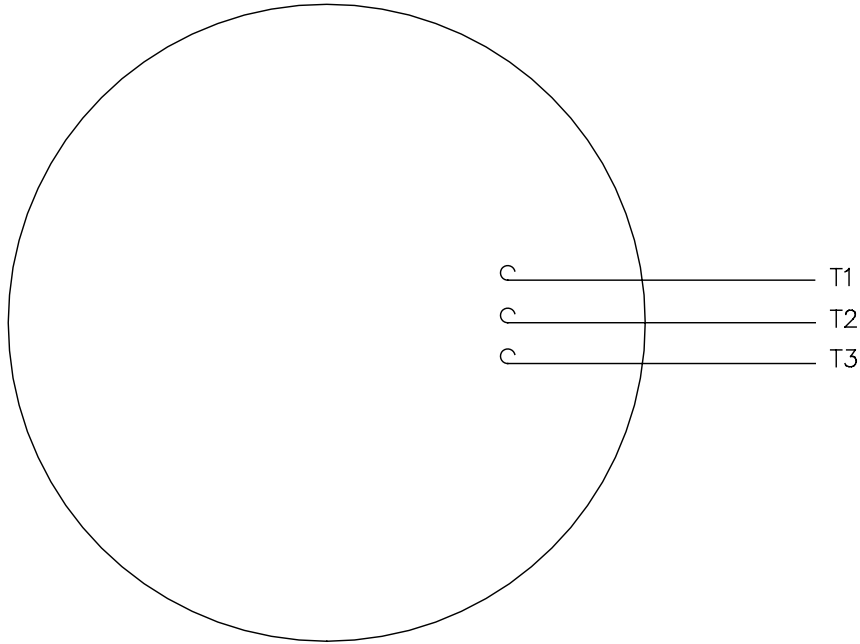
TOLERANCES UNLESS SPECIFIED
 DEC INCHES
 X ±.1
 XX ±.03
 XXX ±.005
 XXXX ±.0005
 TITLE OUTLINE - 180TC FRAME
 TEFC - "C" FACE
 MATL GENERAL PURPOSE

DRAWN RDW 4/18/07
 CHK
 APPR SW 4/18/07
 SCALE 1:2
 REF 035452
 FMF
 PAGE OF



005102-01

VIEW FROM OUTSIDE OF MOTOR AT SWITCH END.



CONNECT LEADS AS FOLLOWS
FOR FOUR CONDUCTOR CORD ()

CORD	L1 (RED)	L2 (WHITE)	L3 (BLACK)	(GREEN)
MOTOR	T1	T2	T3	GROUND

				TOLERANCES UNLESS SPECIFIED		Regal Beloit America, Inc.			DRAWN JRW 9/11/75	
				DEC.	INCHES				CHK	
				.X	±.1	APPD JCW 9/11/75		SCALE 1=1		
08	UPDATED TO REGAL LOGO	SAJ 06/26/15	AJY	.XX	±.01	TITLE EXTERNAL WIRING DIAGRAM TYPE "T" W/O PROTECTOR			REF W-T6343-6	
07	UPDATED TO CURRENT STANDARDS	DBT 5/30/97		.XXX	±.005				MAT'L. DECAL - 004169	
06	REDRAWN ON CAD; ADDED DECAL NUMBER	SAW 1/24/95		.XXXX	±.0005	FINISH			PREV	
NO.	REVISION	BY & DATE	CHK	ANG	±1/2"	RFP 5/1/02	CAD FILE 00510201	SIZE A	DRAWING NO. 005102-01	REV. 08
THIS DRAWING IN DESIGN AND DETAIL IS OUR PROPERTY AND MUST NOT BE USED EXCEPT IN CONNECTION WITH OUR WORK ALL RIGHTS OF DESIGN AND INVENTION ARE RESERVED THIS IS AN ELECTRONICALLY GENERATED DOCUMENT - DO NOT SCALE THIS PRINT						DIST BRF-NLV				

Date: 1/19/2018

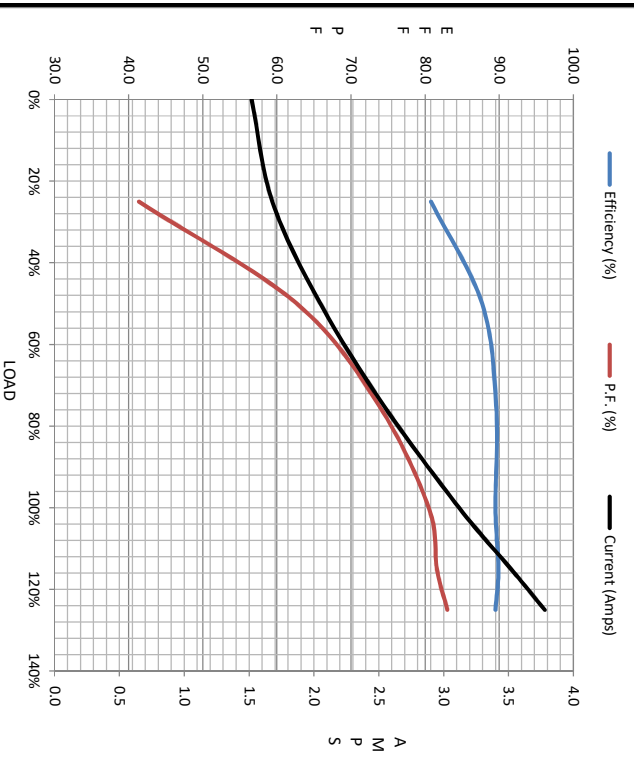
132461.00



Data @ 575 V

Motor Load Data								
Load	0%	25%	50%	75%	100%	115%	125%	LR
Current (Amps)	1.52	1.68	2.05	2.54	3.1	3.5	3.8	26.8
Torque (ft-lb)	0.00	2.20	4.4	6.6	8.9	10.3	11.2	22.5
RPM	1800	1792	1785	1777	1770	1766	1755	0
Efficiency (%)		80.8	87.7	89.6	89.5	89.9	89.5	
P.F. (%)	6.9	41.4	62.7	73.8	80.5	81.6	83.0	0.0

Motor Speed Data						Information Block																					
Speed (RPM)	LR	Pull-Up	BD	Rated	Idle	HP	Sync. RPM	Frame	Enclosure	Construction	Voltage	Frequency	Design	LR Code letter	Service Factor	Temp Rise @ FL	Duty	Ambient	Elevation	Rotor/Shaft wk ²	Ref Wdg	Sound Pressure @ 1M	VFD Rating	Outline Dwg	Conn. Diag	Additional Specifications:	
0		900	1656	1770	1800	3.0	1800	182	TEFC	TFW	575	60	B	K	1.15	40	CONT	40 °C	1,000 feet	0.38	LB-Fk	0	dB(A)	NONE	035518-850	005102.01	
Current (Amps)	26.8	26.4	17.2	3.1	1.52																						
Torque (ft-lb)	22.5	21.0	36.0	8.9	0.00																						



EQUIV CKT (OHMS / PHASE)	R1	R2	X1	X2	Xm
	0.0000	0.0000	0.0000	0.0000	0.0000

