

PRODUCT INFORMATION PACKET



Model No: 132471.00
Catalog No: 132471.00
5 HP Brake Motor, 3 phase, 1800 RPM, 230/460 V, 184TC Frame, ODP
NEMA Definite Purpose AC Brake Motors



Regal and Leeson are trademarks of Regal Beloit Corporation or one of its affiliated companies.
©2020 Regal Beloit Corporation, All Rights Reserved. MC017097E

The Regal logo is a grey rectangular box with the word "REGAL" in white, bold, sans-serif capital letters. The box is tilted slightly to the right.

REGAL



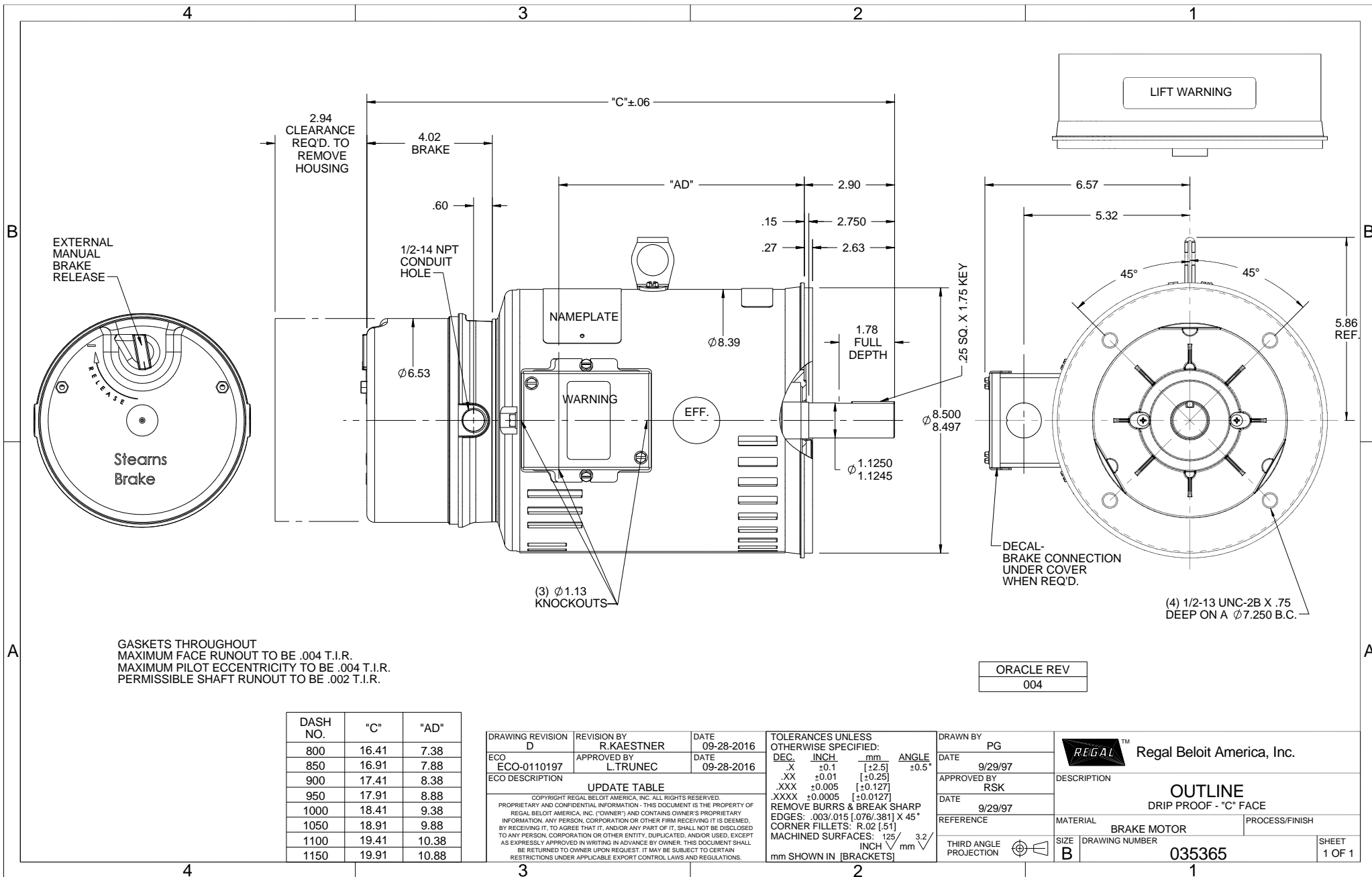
Nameplate Specifications

Output HP	5 Hp	Output KW	3.70 kW
Frequency	60 Hz	Voltage	230/460 V
Current	12.6/6.3 A	Speed	1755 rpm
Service Factor	1.15	Phase	3
Efficiency	89.5 %	Power Factor	83
Duty	CONTINUOUS	Insulation Class	F4
Design Code	B	KVA Code	J
Frame	184TC	Enclosure	DP
Thermal Protection	NOT	Ambient Temperature	40 °C
Drive End Bearing Size	6206	Opp Drive End Bearing Size	6205
UL	Y-(LEESON UL REC)	CSA	Y
CE	Y	IP Code	22

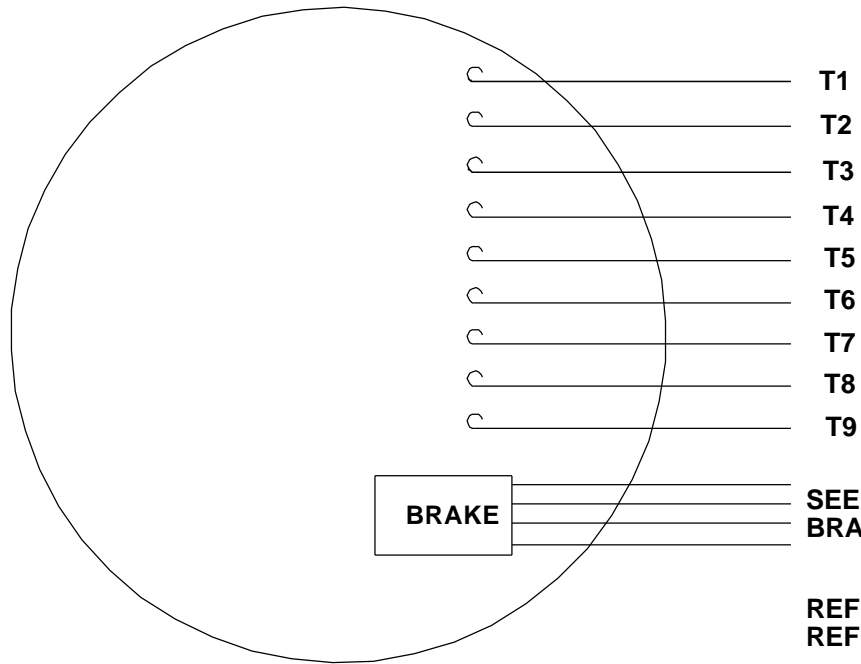
Technical Specifications

Electrical Type	Squirrel Cage Induction Run	Starting Method	ACROSS THE LINE
Poles	4	Rotation	REV
Resistance Main	2.72 Ohms	Mounting	ROUND
Motor Orientation	HORIZONTAL	Drive End Bearing	BALL
Opp Drive End Bearing	BALL	Frame Material	ROLLED STEEL
Shaft Type	T	Overall Length	18.41 in
Frame Length	10 in	Shaft Diameter	1 1/8 in
Shaft Extension	2.75 in	Assembly/Box Mounting	F1/F2 CAPABLE
Outline Drawing	035365-1000	Connection Drawing	005010.15

This is an uncontrolled document once printed or downloaded and is subject to change without notice. Date Created:20/05/2020



VIEW FROM OUTSIDE OF MOTOR AT SWITCH END.

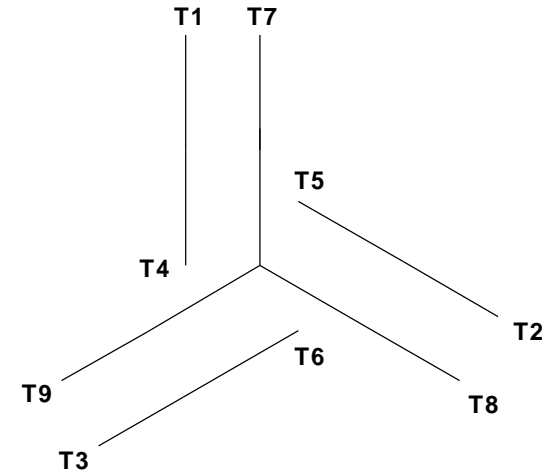


CAUTION:
LEAD WIRE INSULATION TO EXTEND
MINIMUM OF 1/4" INTO CONNECTOR
INSULATION

**SEE TABLE FOR
BRAKE CONNECTIONS**

REF. DECAL (MOTOR) - 004014
REF. DECAL (BRAKE) - 080034 (STEARNS & DINGS BRAKE)

LINE LEADS


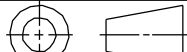


VOLTAGE	L1	L2	L3	JOIN & INSULATE
HIGH	T1	T2	T3	(T4, T7) (T5, T8) (T6, T9)
LOW	T1, T7	T2, T8	T3, T9	T4, T5, T6

TYPE "T" W/O PROTECTOR

BRAKE CONNECTION						
VOLTAGE	STEARNS BRAKE			DINGS BRAKE		
	L1	L2	Join	L1	L2	Join
HIGH	1(RED)	2(RED)	3(BLACK) 4(BLACK)	2(BLACK)	4(YELLOW)	1(YELLOW) 3(BLACK)
LOW	1(RED) 3(BLACK)	2(RED) 4(BLACK)	-----	2(BLACK) 3(BLACK)	1(YELLOW) 4(YELLOW)	-----

RBC PROPRIETARY AND CONFIDENTIAL INFORMATION
This document is the property of REGAL BELOIT CORPORATION ("RBC") including its subsidiaries and divisions and contains proprietary information of RBC. This document is loaned on the express condition that neither it nor the information contained therein shall be disclosed to others without the express written consent of RBC, and that the information shall be used by the recipient only as approved expressly by RBC. This document shall be returned to RBC upon its request. This document may be subject to certain restrictions under U.S. export control laws and regulations.

				TOLERANCES UNLESS SPECIFIED			ELECTRIC MOTORS GEARMOTORS AND DRIVES		DRAWN JJK 09/17/96		
				DEC	INCHES				CHK		
				.X	±.1				APPR		
				.XX	±.01						
--	REDRAWN IN SOLIDWORKS	VJB 02/08/11		.XXX	±.005	TITLE EXTERNAL WIRING DIAGRAM STANDARD 3 PHASE - DUAL VOLTAGE				SCALE 1:1	
01	ADDED DINGS AND BRAKE TABLE (PER CN114156)	TMZ 11/12/96		.XXXX	±.0005	MAT'L W/STEARNS OR DINGS DUAL VOLTAGE BRAKE CONN.				REF 005010-01	
NO	REVISION	BY & DATE	CHK	ANG	±1/2°	FINISH LEESON STOCK				FMF	
<div>THIRD ANGLE PROJECTION</div> 			RFP		PREV			SIZE	DRAWING NO		REV
			NETWORK FILE NAME 00501015						A	005010-15	