

PRODUCT INFORMATION PACKET



Model No: 140605.00
Catalog No: 140605.00
7.50 HP Brake Motor, 3 phase, 1800 RPM, 230/460 V, 213TC Frame, TEFC
NEMA Definite Purpose AC Brake Motors



Regal and Leeson are trademarks of Regal Beloit Corporation or one of its affiliated companies.
©2019 Regal Beloit Corporation, All Rights Reserved. MC017097E





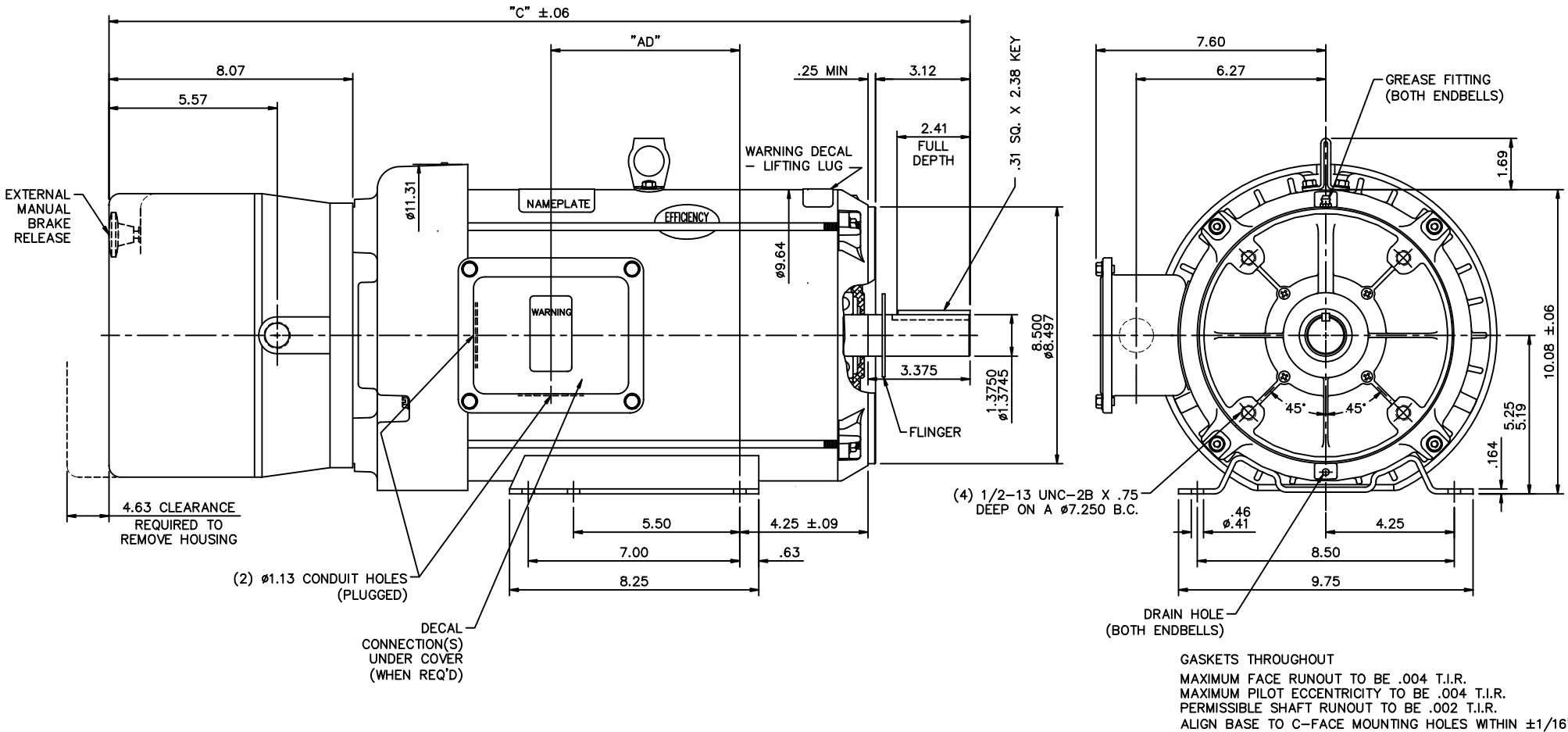
Nameplate Specifications

Output HP	7.50 Hp	Output KW	5.6 kW
Frequency	60 Hz	Voltage	230/460 V
Current	21.6/10.8 A	Speed	1765 rpm
Service Factor	1.15	Phase	3
Efficiency	91.7 %	Power Factor	72
Duty	Continuous	Insulation Class	F
Design Code	B	KVA Code	J
Frame	213TC	Enclosure	Totally Enclosed Fan Cooled
Thermal Protection	No	Ambient Temperature	40 °C
Drive End Bearing Size	6207	Opp Drive End Bearing Size	6206
UL	Recognized	CSA	Y
CE	Y	IP Code	43

Technical Specifications

Electrical Type	Squirrel Cage Induction Run	Starting Method	Across The Line
Poles	4	Rotation	Reversible
Resistance Main	.88 Ohms	Mounting	Rigid base
Motor Orientation	Horizontal	Drive End Bearing	Ball
Opp Drive End Bearing	Ball	Frame Material	Rolled Steel
Shaft Type	T	Overall Length	28.00 in
Frame Length	12.00 in	Shaft Diameter	1.375 in
Shaft Extension	3.37 in	Assembly/Box Mounting	F1 Only

This is an uncontrolled document once printed or downloaded and is subject to change without notice. Date Created:01/11/2019



GASKETS THROUGHOUT
 MAXIMUM FACE RUNOUT TO BE .004 T.I.R.
 MAXIMUM PILOT ECCENTRICITY TO BE .004 T.I.R.
 PERMISSIBLE SHAFT RUNOUT TO BE .002 T.I.R.
 ALIGN BASE TO C-FACE MOUNTING HOLES WITHIN ±1/16"

DASH NO.	"C"	"AD"
1100	27.00	4.75
1150	27.50	5.25
1200	28.00	5.75
1250	28.50	6.25
1300	29.00	6.75
1350	29.50	7.25
1400	30.00	7.75

		TOLERANCES UNLESS SPECIFIED		LEESON ELECTRIC MOTORS GEARMOTORS AND DRIVES		DRAWN RDW 6/22/05		
		DEC.	INCHES			CHK		
01	ADDED: WARNING DECAL - LIFTING LUG & WARNING DECAL - KVN 4/13/2010	.X	±.1	TITLE	OUTLINE - 210TC FRAME TEFC - RIGID "C"	APPD	SW 6/22/05	
	WITH/OUT PROTECTOR; REMOVED: DECAL - WIRING INSTRUCTION,	.XX	±.03	MAT'L	BRAKE MOTOR	SCALE	5=16	
	NAMEPLATE -was- TV SCREEN STYLE(004142.01)	.XXX	±.005	FINISH		REF		
		.XXXX	±.0005			FMF		
NO.	REVISION	CHK	ANG	±1/2"		PREV		
THIS DRAWING IN DESIGN AND DETAIL IS OUR PROPERTY AND MUST NOT BE USED EXCEPT IN CONNECTION WITH OUR WORK ALL RIGHTS OF DESIGN AND INVENTION ARE RESERVED THIS IS AN ELECTRONICALLY GENERATED DOCUMENT - DO NOT SCALE THIS PRINT		RFP	6/22/05	CAD FILE	037633	SIZE	DRAWING NO.	
		DIST	NLV			B	037633	
							REV.	01