

# PRODUCT INFORMATION PACKET



Model No: 122337.00

Catalog No: 122337.00

1.50 HP Variable Speed Motor, 3 phase, 1200 RPM, 230/460 V, 145TC Frame, TEFC  
2000:1 With Encoder Provision Motors



Regal and Leeson are trademarks of Regal Beloit Corporation or one of its affiliated companies.  
©2019 Regal Beloit Corporation, All Rights Reserved. MC017097E





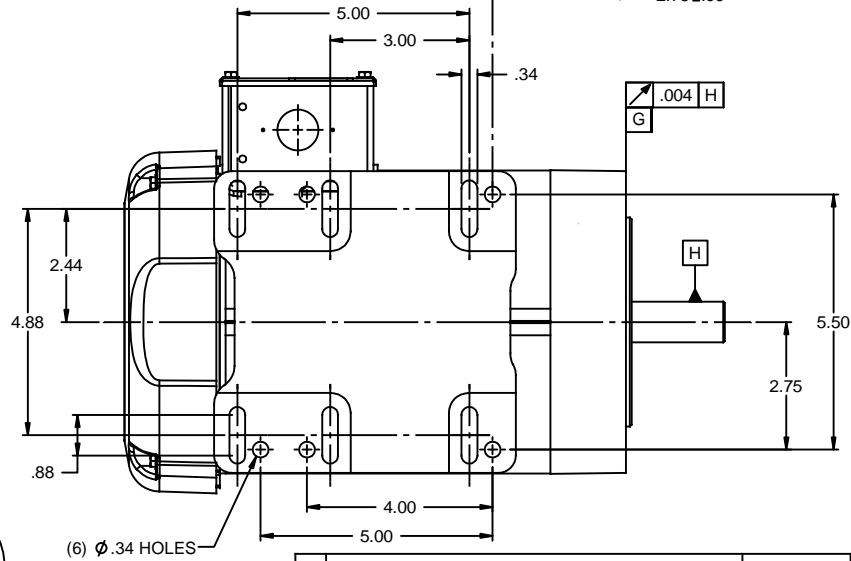
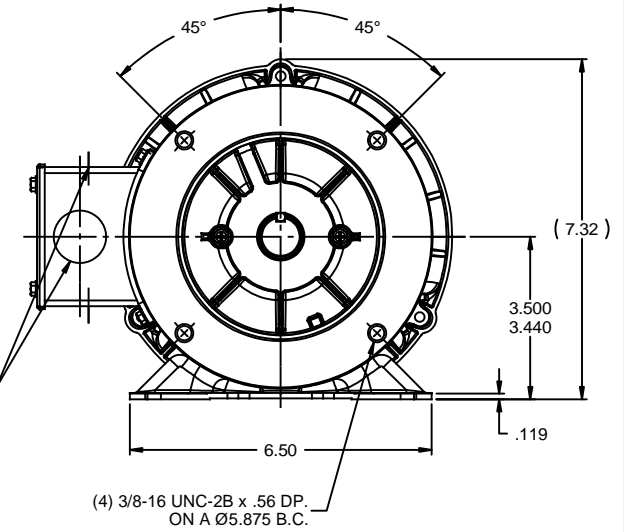
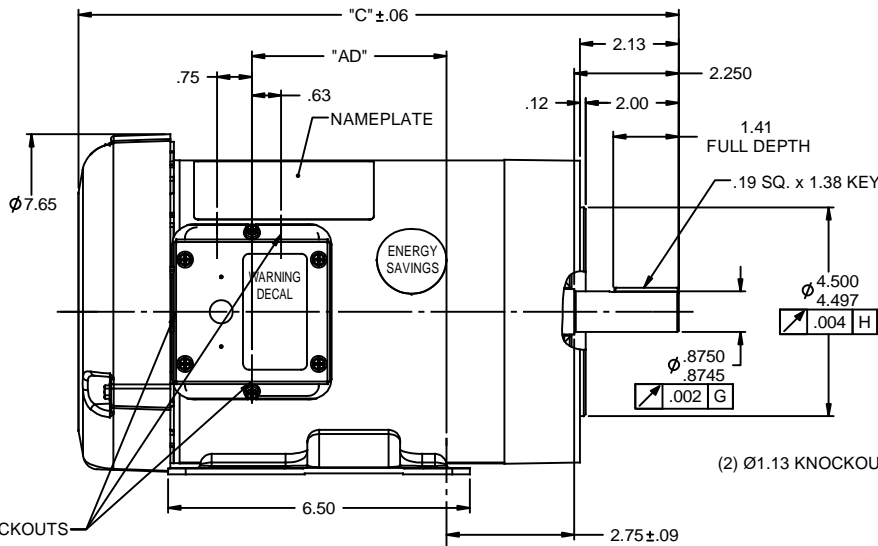
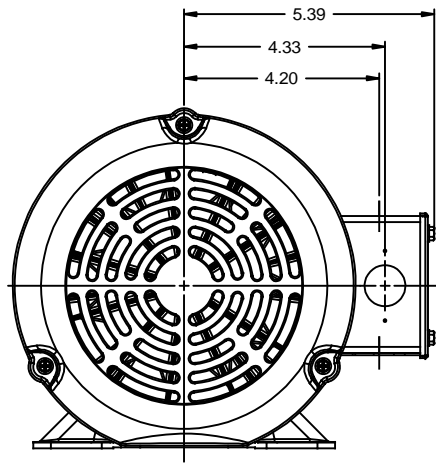
### Nameplate Specifications

Output HP	1.50 Hp	Output KW	1.1 kW
Frequency	60 Hz	Voltage	230/460 V
Current	5.7/2.9 A	Speed	1140 rpm
Service Factor	1	Phase	3
Efficiency	77 %	Power Factor	64
Duty	Continuous	Insulation Class	H
Design Code	INV	KVA Code	J
Frame	145TC	Enclosure	Totally Enclosed Fan Cooled
Thermal Protection	No	Ambient Temperature	40 °C
Drive End Bearing Size	6205	Opp Drive End Bearing Size	6203
UL	Recognized	CSA	Y
CE	N	IP Code	43

### Technical Specifications

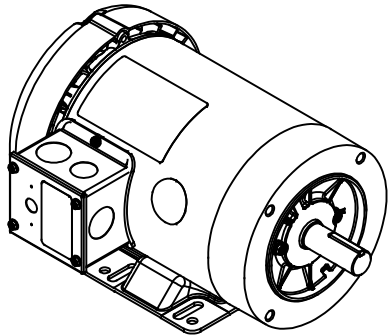
Electrical Type	Squirrel Cage Inverter Duty	Starting Method	Inverter Only
Poles	6	Rotation	Reversible
Mounting	Rigid base	Motor Orientation	Horizontal
Drive End Bearing	Ball	Opp Drive End Bearing	Ball
Frame Material	Rolled Steel	Shaft Type	T
Overall Length	13.42 in	Frame Length	7.50 in
Shaft Diameter	0.875 in	Shaft Extension	2.25 in
Assembly/Box Mounting	F1 Only		

This is an uncontrolled document once printed or downloaded and is subject to change without notice. Date Created:01/11/2019



NOTE:  
1) GASKETS THROUGHOUT

DASH NO.	"C"	"AD"
600	11.92	3.19
650	12.42	3.69
700	12.92	4.19
750	13.42	4.69
800	13.92	5.19



TOLERANCES UNLESS SPECIFIED		LEESON ELECTRIC MOTORS GERMOTORS AND DRIVES		DRAWN GRB 12/05/08	
DEC	INCHES	TITLE OUTLINE - 140TC/56HCZ FRAME TEFC - RIGID "C" FACE		CHK DJ 12/05/08	
X	±.1			APPR DJ 12/05/08	
.XX	±.03			SCALE 3:8	
.XXX	±.005			REF 028566	
.01	ADDED BOTTOM VIEW	PG 5/19/2010	MATL	FMF 120485.00	
REVISION		BY & DATE	CHK ANG ±1/2°	PAGE 1 OF 1	
THIRD ANGLE PROJECTION		RFP 12/05/08	PREV	SIZE B	DRAWING NO 028911
		NETWORK FILE NAME 028911			REV 01