



Hammond Power Solutions Inc.

TITLE: IRON CORE LINE REACTOR
NAMEPLATE INFORMATION

DES:	PBAKER
DATE:	14/07/31
SCALE:	NTS

SHEET 1 OF 2

EDBCRX0143CE

0.0 Jwen 2023/10/31 11:58



Hammond
Power Solutions

HPS CENTURION R
THREE PHASE LINE REACTOR
P/N CRX0143CE

INDUCT. 0.114 MH 50/60 HZ 143 AMPS
0.6 KV CLASS WT: 38 lbs ENCL. TYPE 1/IP20
AMBIENT: 50° TEMP CLASS: 220 TYPE JR-2A

USE WITH SUITABLY RATED LISTED (ZMVV) LUGS
WINDING TERMINAL TEMPERATURE: 75° C



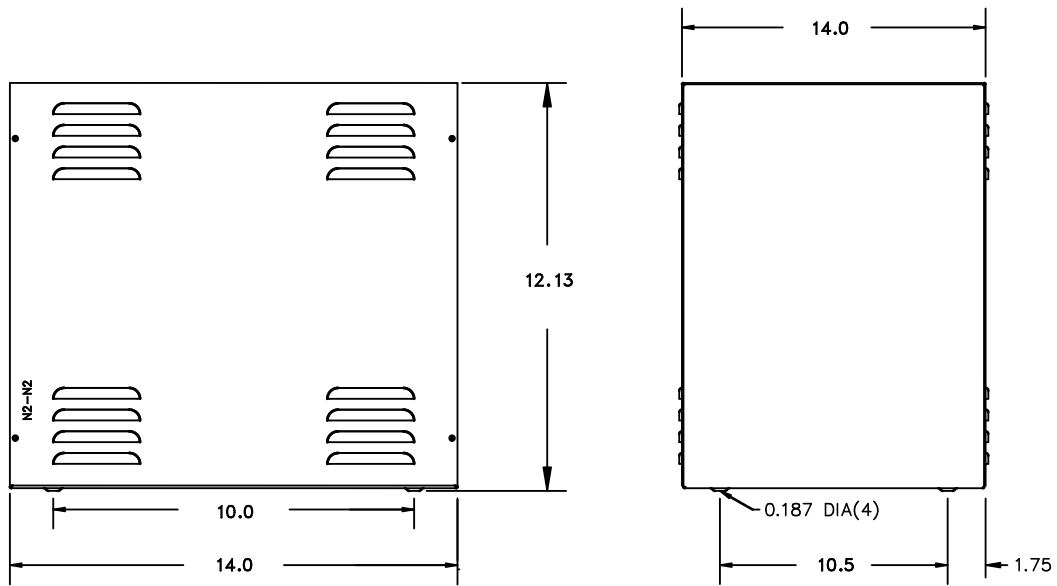
LR3902



LISTED

MADE IN CANADA
f003783e

IND.
CONT.
EQ.
E61431

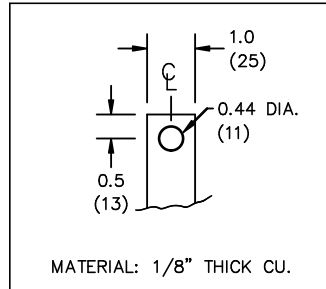
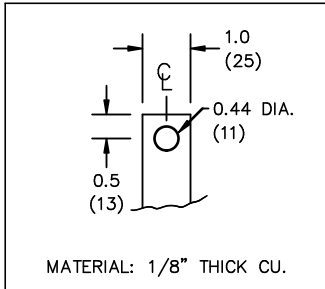


All Dimensions in inches

ENCLOSURE COLOR :ASA 61 GREY

IN TERMINAL DETAIL

OUT TERMINAL DETAIL



CUSTOMER NOTES:

- IN TERMINATED AT BOTTOM FRONT
- OUT TERMINATED AT TOP FRONT



Hammond Power Solutions Inc.

TITLE: IRON CORE LINE REACTOR

				DES: PBAKER
				DATE: 14/07/31
NO.	DATE	BY	REVISION	SCALE: NTS

SHEET 2 OF 2

EDBCRX0143CE

95:11:16/10/2023/wef 0.0