



Hammond  
Power Solutions

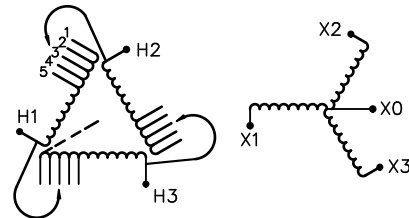
GUELPH, ONT. BARABOO, WI COMPTON, CA MONTERREY, MX



LR 3902  
DRY TYPE  
TRANSFORMER  
77JUS  
E112313  
**LISTED**

THREE PHASE DRY TYPE DRIVE ISOLATION TRANSFORMER  
TRANSFORMATEUR TRIPHASE POUR VARIATEUR DE VITESSE DE MOTEURS

HV/HT	575V				Cust. Ref. Réf. du client	
BIL	-				Serial No. No. de série	
TERM. BORNES	H1 H2 H3				Part No. No. de pièce	DM027NJCN
	VOLTS	CURRENT COURANT	% RATED VOLTAGE % TENSION NOMINALE	CONNECTION EACH PHASE CONNEXION PAR PHASE	kVA	27
	604	25.8	105	1	TYPE	K
	589	26.5	102.5	2	Cooling Refroidissement	ANN
	575	27.1	100	3	Temp. Rise Echauffement	130 °C
	561	27.8	97.5	4	Temp. Class Classe de Temp.	200 °C
	546	28.5	95	5	Frequency Fréquence	60 Hz
					Impédance % @ 150 °C	3.9
LV/BT	460Y/266V				Encl. Type Type de boîtier	3R
BIL	-				Wt Poids lbs/kg	325/148
TERM. BORNES	X0 X1 X2 X3				Winding Enroulement	CU



SPACINGS BETWEEN ANY VENTILATED ENCLOSURE PANEL AND ANY ADJACENT WALL SHALL BE A MINIMUM OF 3 INCHES

d003102b



Hammond Power  
Solutions Inc.

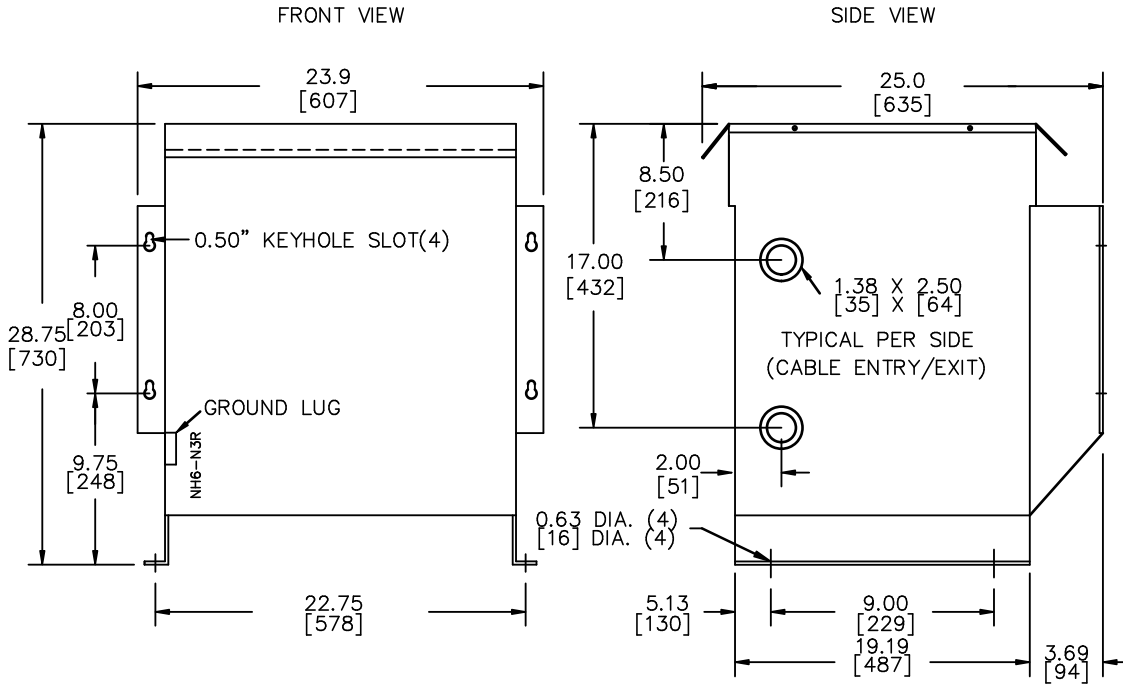
TITLE: 3PH DISTRIBUTION TRANSFORMER  
NAMEPLATE INFORMATION

2	21/07/16	PP	EDB UPDATE	DES: GRID1
1	15/11/02	ME	HCN: 61628	DATE: 04/06/22
NO.	DATE	BY	REVISION	SCALE: NTS

SHEET 1 OF 2

EDBDM027NJCN

2.0 Jwen 2021/07/07/16 14:57



All Dimensions in inches[mm]

ENCLOSURE COLOR : ANSI 61 GREY – OUTDOOR

H.V.1. TERMINAL DETAIL

L.V.1. TERMINAL DETAIL

MECHANICAL TYPE LUGS INCLUDED  
SUITABLE FOR #14-2 CU/AL  
CONDUCTORS  
1 CONDUCTOR PER PHASE

MECHANICAL TYPE LUGS INCLUDED  
SUITABLE FOR #14-2 CU/AL  
CONDUCTORS  
1 CONDUCTOR PER PHASE

CUSTOMER NOTES:

- HV1 TERMINATED AT TOP FRONT
- LV1 TERMINATED AT BOTTOM FRONT
- C/W 1-"NC"-THERMOSTAT PER COIL CONNECTED TO T.B.



TITLE: 3PH DISTRIBUTION TRANSFORMER

2	21/07/16	PP	EDB UPDATE	DES: GRID1
1	15/11/02	ME	HCN: 61628	DATE: 04/06/22
NO.	DATE	BY	REVISION	SCALE: NTS

SHEET 2 OF 2

EDBDM027NJCN

2.0 Jwen 2021/07/16 14:57