


- IMPEDANCE SHOWN IS CALCULATED VALUE
- TESTED VALUE WILL BE ON ACTUAL NAMEPLATE



**Hammond Power Solutions Inc.**

GUELPH, ONT   BARABOO, WI   COMPTON, CA   MONTEREY, MX   GRANBY, QC

HPS POWERPLUS - MINI POWER CENTER


PART No. No. DE PIÈCE No. DE PARTE	M1PC010LESF7	V001	TYPE TYPE TIPO	M1P	
kVA	10	1	PHASE	60	Hz
INPUT ENTRÉE ENTRADA	480	VOLTS AC	IMPEDANCE IMPÉDANCE IMPEDANCIA	2.75	%
TAPS PRISES TAPS	2	X - 5.0 %	AT A EN	135	°C
	--	X -- %	RISE ÉLÉVATION AUMENTO	115	°C
OUTPUT SORTIE SALIDA	120 / 240	VOLTS AC	CLASS CLASSE CLASE	180	
	42	AMPS MAX	ENCLOSURE BOITIER GABINETE	TYPE 3RX	
REF.	1P-3T-08C		WEIGHT POIDS PESO	210 lbs	

INSTALL IN UPRIGHT POSITION  
MINIMUM INSTALLATION CLEARANCES  
SIDE : 8 INCHES - VERTICAL : 10 INCHES  
INSTALLER EN POSITION VERTICALE  
DISTANCES D'INSTALLATION MINIMALES  
COTÉ : 8 POUÇES - VERTICAL : 10 POUÇES  
INSTALAR EN POSICIÓN VERTICAL  
SEPARACIÓN MINIMA DE INSTALACIÓN  
LADO : 8 PULGADAS - VERTICAL : 10 PULGADAS

DIAGRAM AND ADDITIONAL INFORMATION INSIDE.  
SCHÉMA ET INFORMATIONS ADDITIONNELLES À L'INTÉRIEUR.  
DIAGRAMAS E INFORMACIONES ADICIONALES EN EL INTERIOR.

SERIAL No.  
No. DE SÉRIE  
No. DE SÉRIE

XXXXXX

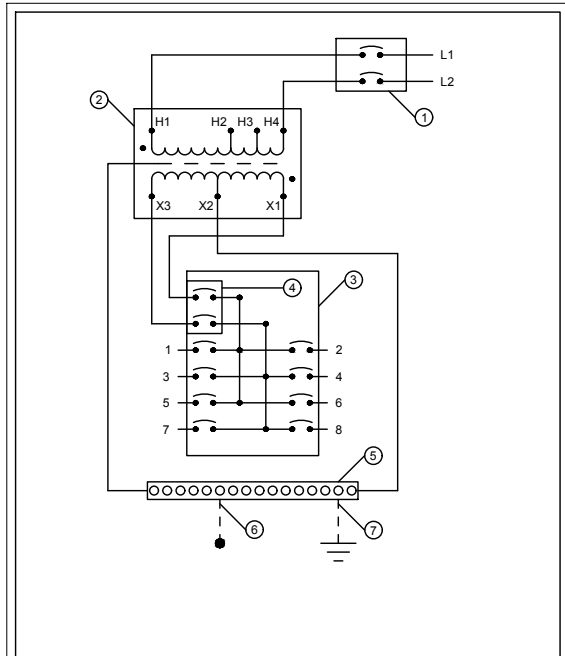


IN THE UNITED STATES ONLY,  
SUITABLE FOR USE AS SERVICE EQUIPMENT.  
AUX ÉTATS-UNIS SEULEMENT,  
ACCEPTABLE COMME APPAREILLAGE DE BRANCHEMENT.  
SOLO EN LOS ESTADOS UNIDOS,  
ADECUADO PARA SU USO COMO EQUIPO DE SERVICIO.



TITLE: 1 PHASE POWERPLUS MINI POWER CENTER NAMEPLATE INFORMATION			
DES:	Y.	T.	
00	2011-09-20	Y. T.	ISSUED FOR APPROVAL
DATE:	2011-09-20	SCALE:	NTS
NO.	DATE	BY	REVISION

SHEET 1 OF 3  
 EDB M1PC010LESF7



NEUTRAL	WIRE COMBINATIONS COMBINAISONS DE FILS COMBINACIONES DEL CABLE	1 x 14 - 4 CU 2 x 14 - 10 CU 3 x 14 - 10 CU	1 x 12 - 4 AL 2 x 12 - 10 AL 3 x 12 - 10 AL
NEUTRE	TIGHTENING TORQUE COUPLE DE SERRAGE TORQUE DE APRIETE	14 - 10 CU / AL 8 CU / AL 6 - 4 CU / AL	20 INCH-LBS 25 LIVRES-POUCES 35 PULGADAS - LIBRAS

1 - MAIN BREAKER / DISJONCTEUR PRINCIPAL / INTERRUPTOR PRINCIPAL  
 2 - TRANSFORMER / TRANSFORMATEUR / TRANSFORMADOR  
 3 - PANEL BOARD / PANNEAU DE DISTRIBUTION / PANEL DE DISTRIBUCION  
 4 - PANEL BOARD FEED BREAKER / DISJONCTEUR D'ALIMENTATION DU PANNEAU DE DISTRIBUTION / INTERRUPTOR DE PANEL DE ALIMENTACION  
 5 - NEUTRAL / NEUTRE / NEUTRAL  
 6 - BOND WHEN REQUIRED / RELIER LORSQUE REQUIS / CONECTAR CUANDO SE REQUIERA  
 7 - GROUND WHEN REQUIRED / METTRE À LA TERRE LORSQUE REQUIS / TIERRA CUANDO SE REQUIERA

- THE MAXIMUM CONTINUOUS LOAD CURRENT NOT TO EXCEED 100% OF THE TRANSFORMER NOMINAL CURRENT.  
 - THE MAXIMUM CONTINUOUS LOAD CURRENT FOR THE BRANCH CIRCUITS NOT TO EXCEED 80% OF THE RATINGS OF THE CIRCUIT BREAKERS EMPLOYED IN OTHER THAN MOTOR CIRCUITS.  
 - MAXIMUM SHORT-CIRCUIT CAPACITY 10,000 AMPS.

- LE COURANT DE CHARGE CONTINUE MAXIMUM NE DOIT PAS EXCÉDER 100% DU COURANT NOMINAL DU TRANSFORMATEUR.  
 - LE COURANT DE CHARGE CONTINUE MAXIMUM POUR LES CIRCUITS DE DÉRIVATION NE DOIT PAS EXCÉDER 80% DES CARACTÉRISTIQUES NOMINALES DES DISJONCTEURS EMPLOYÉS DANS LES CIRCUITS AUTRES QUE DES CIRCUITS DE MOTEURS.  
 - CAPACITÉ DE COURT-CIRCUIT MAXIMUM 10,000 AMPÈRES.

- LA MAXIMA CORRIENTE DE CARGA CONTINUA NO EXCEDA EL 100% DE LA CORRIENTE NOMINAL DEL TRANSFORMADOR.  
 - LA MAXIMA CORRIENTE DE CARGA CONTINUA PARA LOS CIRCUITOS DE PODER NO EXCEDA DEL 80% DE LAS CALIFICACIONES DE LOS INTERRUPTORES EMPLEADOS EN OTROS CIRCUITOS DE MOTOR.  
 - CAPACIDAD MAXIMA DE CORTO-CIRCUITO 10,000 AMP.

1P - 3T - 08C

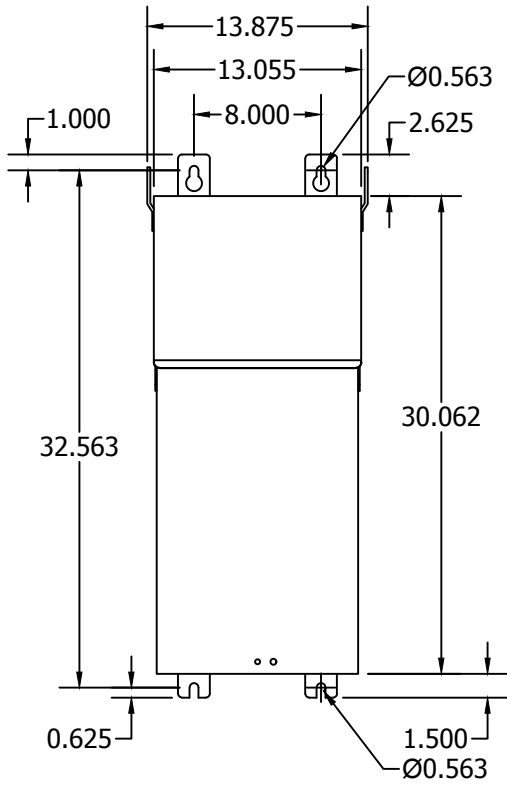


TITLE:		1 PHASE POWERPLUS MINI POWER CENTER DIAGRAM INFORMATION	
DES:	Y. T.	DATE:	2011-09-20
ND.	DATE	BY	REVISION
00	2011-09-20	Y. T.	ISSUED FOR APPROVAL
			SCALE: NTS

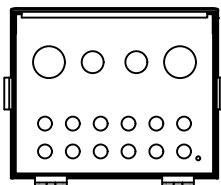
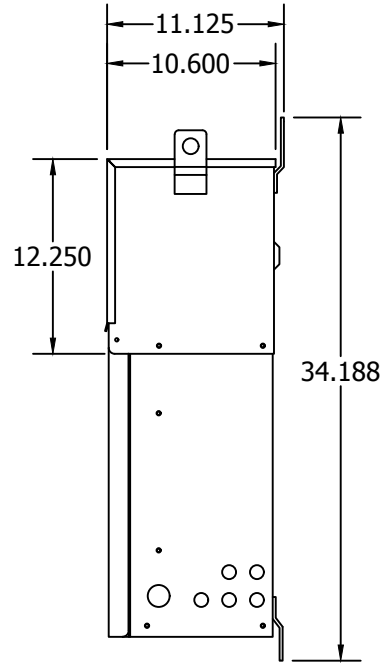
EDB M1PC010LESF7  
 SHEET 2 OF 3

- ALL DIMENSIONS IN INCHES
- ENCLOSURE : STAINLESS STEEL - OUTDOOR

FRONT VIEW



SIDE VIEW



BOTTOM VIEW

K.O. INFORMATION

- 0.875 DIA.
- 1.375 DIA.
- 2.000 DIA.



TITLE: 1 PHASE POWERPLUS MINI POWER CENTER ENCLOSURE INFORMATION				
00	2011-09-20	Y. T.	ISSUED FOR APPROVAL	DES: Y. T. DATE: 2011-09-20
NO.	DATE	BY	REVISION	SCALE: NTS

SHEET 3 OF 3  
EDB M1PC010LESF7