



- IMPEDANCE SHOWN IS CALCULATED VALUE - NOT GUARANTEED

d000590hb



Hammond Power Solutions
Guelph, ONT
Compton, CA

HPS Millennium™ G
Energy Efficient Distribution Transformer
Transformateur de Distribution à Bon Rendement Énergétique



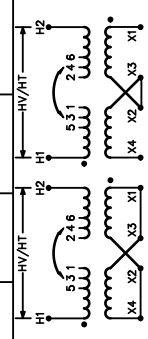
LR 3902
DISTRIBUTION TRANSFORMER
E147879
ALSO VERIFIED IN ACCORDANCE TO ENERGY STANDARD C802.2-18 BY UNDERWRIERS LABORATORIES INC. 3106

Part No. **MG2L0037SESCFC0**

Cust. Ref. Ref. du Client	Serial No. No. de Serie	VOLTS	CURRENT COURANT	% RATED VOLTAGE % NOMINALE	CONNECTION CONNEXION
		4368	8.6	105	1-2
		4264	8.8	102.5	2-3
		4160	9.0	100	3-4
		4056	8.2	97.5	4-5
		3952	9.5	95	5-6

SPACINGS BETWEEN ANY VENTILATED ENCLOSURE PANEL AND ANY ADJACENT WALL SHALL BE A MINIMUM OF 3 INCHES

SECONDARY VOLTS
120V LINK X4-X2 & X3-X1
240V LINK X2-X3



Cust. Ref. Ref. du Client	Serial No. No. de Serie	HV/HT	LV/BT	Energy Regulations Règlements Énergétique
1		4160V	120/240V 313/156A	DOE 10 CFR PART 431:2016
Type	BIL	30 kV	10 kV	CEE ACT SOR/2018-201
Cooling Refroidissement	ANN	H1 H2	Term Bornes	
kVA	37.5		LV/BT	
Temp. Rise Échauffement	115 °C		BIL	
Temp Class Classe Temp	180 °C		Term Bornes	
Winding Enroulement	CU			
Frequency Fréquence Hz	60			
Impedance % @ 1.35 °C	3.4			
End. Type/Category Type ou catégorie de boîtier	3R	C		
Weight lbs/kg Poids	465/211			

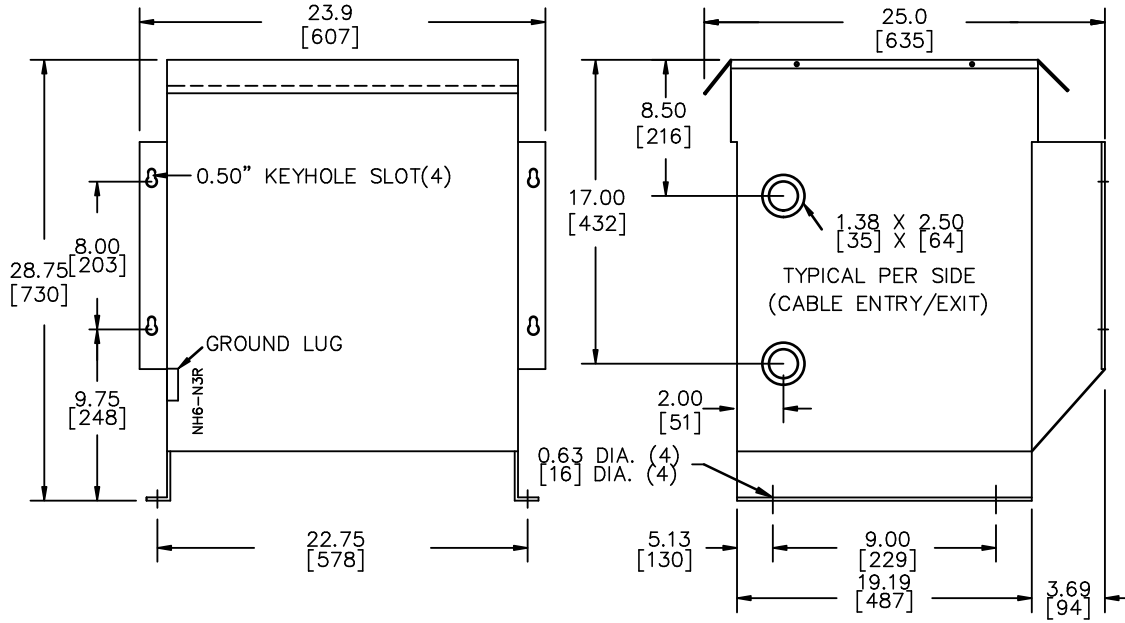


TITLE: 1PH DISTRIBUTION TRANSFORMER NAMEPLATE INFORMATION	
NO.	DATE
BY	REVISION
DES: CSHAH DATE: 21/12/22 SCALE: NTS	

SHEET 1 OF 2
EDBMG2L0037SESCFC0
0.1 cshoh 2021/12/22 14:25

FRONT VIEW

SIDE VIEW

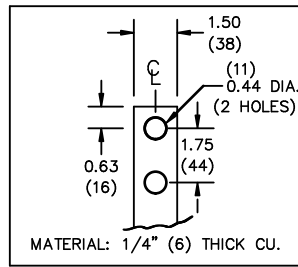
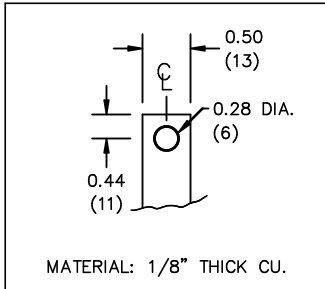


All Dimensions in inches[mm]

ENCLOSURE COLOR : ANSI 61 GREY - OUTDOOR

HV TERMINAL DETAIL

LV TERMINAL DETAIL



CUSTOMER NOTES:

- HV TERMINATED AT TOP FRONT
- LV TERMINATED AT BOTTOM FRONT



TITLE: 1PH DISTRIBUTION TRANSFORMER

DES:	CSHAH
DATE:	21/12/22
SCALE:	NTS

SHEET 2 OF 2

EDBMG210037SESOFCO

0.1 cshah 2021/12/22 14:25