



Hammond
Power Solutions

UL US LISTED
31GW E258346

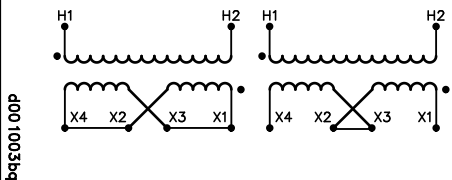
GUELPH, ONT. BARABOO, WI. COMPTON, CA MONTERREY, MX

SINGLE PHASE DRY TYPE TRANSFORMER
TRANSFORMATEUR SEC MONOPHASE

HV/HT	600V 8.3A				Cust. Ref. Réf. du client	
BIL	-				Serial No. No. de série	
TERM. BORNES	H1 H2				Part No. No. de pièce	Q005PEKF
	VOLTS	CURRENT COURANT	% RATED VOLTAGE % TENSION NOMINALE	CONNECTION EACH PHASE CONNEXION PAR PHASE	kVA	5
					TYPE	HZQ
					Cooling Refroidissement	ANC
					Temp. Rise Echauffement	115 °C
					Temp. Class Classe de Temp.	180 °C
					Frequency Fréquence	60 Hz
					Impédance % @ 135 °C	3.4
					Encl. Type Type de boîtier	3R
					Wt lbs/kg	101/46
					Winding Enroulement	COPPER

SECONDS	MINUTES	HOURS	PERCENT
240	20.8	X1, X4	X2-X3
120	41.6	X1, X2	X2-X4, X1-X3
120/240	20.8	X1, X2, X4	X2-X3

LV/BT	120V/240V 20.8/41.7A				GENERAL PURPOSE TRANSFORMER FOR USE IN HAZARDOUS LOCATIONS ABS CERT. NO.19-HS1854283-PDA SPACINGS BETWEEN ENCLOSURE PANEL AND ANY ADJACENT WALL SHALL BE A MINIMUM OF 1 INCHES ELECTROSTATIC SHIELD
BIL	-				TEMPERATURE CLASSIFICATION: T3A
TERM. BORNES	X4	X2	X3	X1	



TITLE:		1PH DISTRIBUTION TRANSFORMER NAMEPLATE INFORMATION	
3	22/04/21	LC	CHANGED ADD SECONDARY
2	21/09/22	LC	CHANGED NOTES:
NO.	DATE	BY	REVISION

SHEET 1 OF 3
EDB0005PEKF
3.0 Icon 2022/04/21 15:05



HPS TITAN

General Purpose Transformer for use in Hazardous Locations

Class I, Division 2, Groups A, B, C, & D
Class I, Zone 2, Group IIC, T3
Hazardous Locations

WARNING - EXPLOSION HAZARD - DO NOT DISCONNECT EQUIPMENT WHILE THE CIRCUIT IS LIVE OR UNLESS THE AREA IS KNOWN TO BE FREE OF IGNITABLE CONCENTRATIONS.
WARNING - EXPLOSION HAZARD - SUBSTITUTION OF ANY COMPONENT MAY IMPAIR SUITABILITY FOR CLASS 1, DIVISION 2.

LAB62181



Hammond Power Solutions Inc.

TITLE: 1PH DISTRIBUTION TRANSFORMER

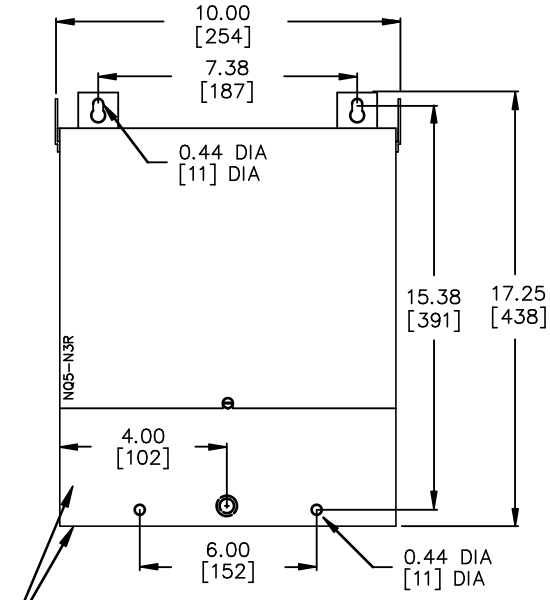
3	22/04/21	LC	CHANGED ADD SECONDARY	DES: RBHATIA
2	21/09/22	LC	CHANGED NOTES:	DATE: 00/07/26
NO.	DATE	BY	REVISION	SCALE: NTS

SHEET 2 OF 3

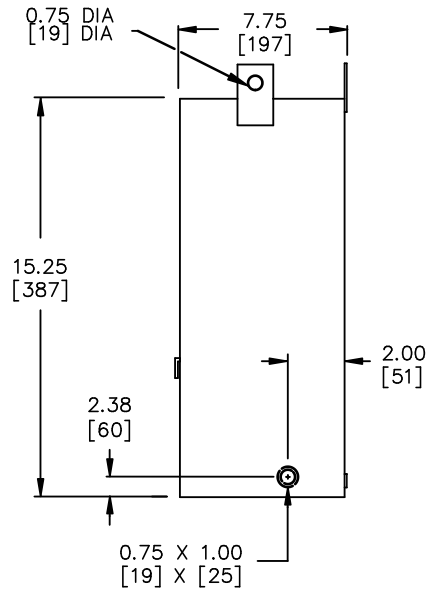
EDB0005PEKF

3.0 Icon 2022/04/21 15:05

FRONT VIEW



SIDE VIEW



FRONT & BOTTOM PANEL IS HINGED FOR ACCESS TO TERMINALS, BOTTOM MOUNTING HOLES AND REAR KNOCKOUT.

All Dimensions in inches[mm]

ENCLOSURE COLOR : ANSI 61 GREY – OUTDOOR

CUSTOMER NOTES:

- HV1 TERMINATED AT LEADS
- LV1 TERMINATED AT LEADS
- ..



TITLE:		1PH DISTRIBUTION TRANSFORMER		
3	22/04/21	LC	CHANGED ADD SECONDARY	DES: RBHATIA
2	21/09/22	LC	CHANGED NOTES:	DATE: 00/07/26
NO.	DATE	BY	REVISION	SCALE: NTS

SHEET 3 OF 3
 ED0005PEKF
 3.0 Icon 2022/04/21 15:05