



Hammond Power Solutions Inc.


TITLE: 3PH DISTRIBUTION TRANSFORMER
NAMEPLATE INFORMATION

4	21/11/25	CS	NPL IMPEDANCE AND WEIGHT UPDATE	DES: ASETH
3	21/07/16	PP	EDB UPDATE	DATE: 16/01/11
NO.	DATE	BY	REVISION	SCALE: NTS

SHEET 1 OF 3

EDBSG3A0300KKOC


4.0 Jwen 2021/11/25 14:39



Hammond Power Solutions
Guelph, ONT Compton, CA

HPS Sentinel™ G
Energy Efficient Distribution Transformer
Transformateur de Distribution à Bon Rendement Énergétique

LR 3902
DRY TYPE TRANSFORMER 77US E112313
ALSO REFER TO ENERGY STANDARDS CRO2-18 BY UNDERWRITERS LABORATORIES INC. @ 316



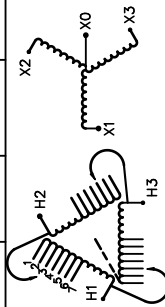
8 03423 172819 7

LISTED

SPACINGS BETWEEN ANY VENTILATED ENCLOSURE PANEL AND ANY ADJACENT WALL SHALL BE A MINIMUM OF 5 INCHES EXCEPT WHEN WALL MOUNTED USING APPROVED WALL MOUNTING KIT

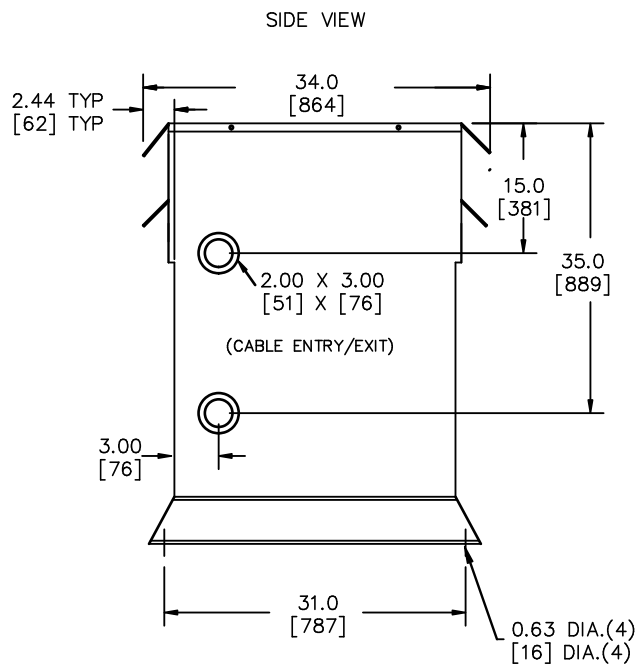
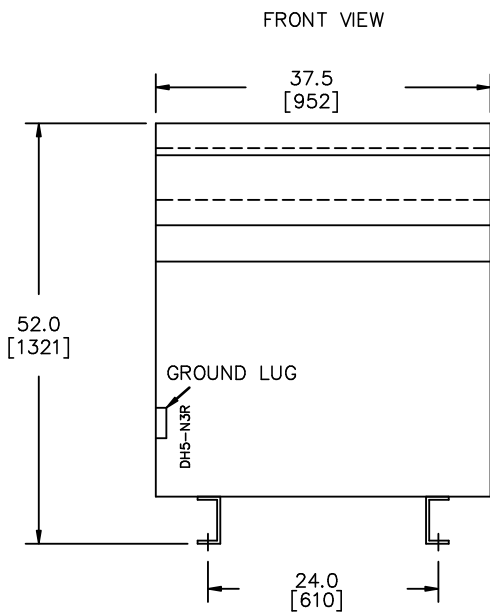
Serial No. No. de Serie	HV/HT	480V	10 kV	H1 H2 H3	480Y/277V	10 kV	X0 X1 X2 X3	DOE 10 CFR PART 431:2016
3								CEE ACT SOR/2018-201
K	BIL							
ANN	Term Bornes							
300	LV/BT							
150 °C	BIL							
220 °C	Term Bornes							
CU	Energy Regulations							
60	Reglements de l'Energétique							
3.2								
3R								
1950/885								

VOLTS	CURRENT COURANT	% RATED VOLTAGE % TENSION NOMINALE	CONNECTION EACH PHASE CONNECTION PAR PHASE
504	344	105	1
492	352	102.5	2
480	361	100	3
468	370	97.5	4
456	380	95	5
444	390	92.5	6
432	401	90	7



SEISMIC QUALIFICATIONS:
AS FLOOR MOUNT ONLY
IBC 2018/ASCE 7-16
SDS<=2.0g Z/h=0 Ip=1.5

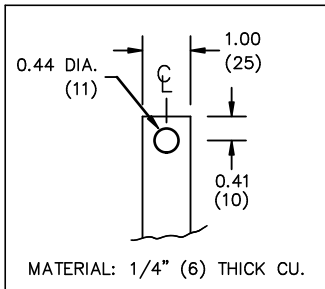
d000186hb



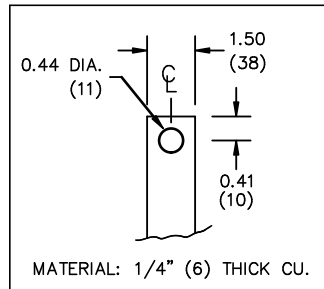
All Dimensions in inches[mm]

ENCLOSURE COLOR :ANSI 61 GREY – OUTDOOR

H.V.1. TERMINAL DETAIL



L.V.1. TERMINAL DETAIL



CUSTOMER NOTES:

- HV1 TERMINATED AT TOP FRONT
- LV1 TERMINATED AT BOTTOM FRONT



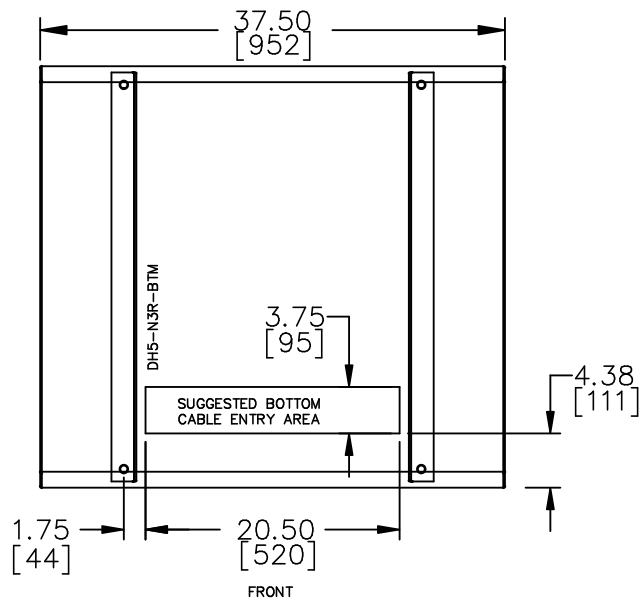
TITLE: 3PH DISTRIBUTION TRANSFORMER

4	21/11/25	CS	NPL IMPEDANCE AND WEIGHT UPDATE	DES: ASETH
3	21/07/16	PP	EDB UPDATE	DATE: 16/01/11
NO.	DATE	BY	REVISION	SCALE: NTS

SHEET 2 OF 3

EDBSC3A0300KK0C

ENCLOSURE BOTTOM VIEW



NOTE:
 WHEN BOTTOM CABLE ENTRY IS OPTED, THE SPACE USED FOR CONDUITS IN THE FRONT OF THE TRANSFORMER SHOULD NOT OBSTRUCT MORE THAN 50% OF THE FRONT AIR INTAKE AREA DEFINED BETWEEN THE BOTTOM PLATE AND THE SUPPORTING LEGS.
 SEE MANUAL FOR ADDITIONAL INFORMATION



Hammond Power Solutions Inc.

TITLE: 3PH DISTRIBUTION TRANSFORMER
 ENCLOSURE BOTTOM VIEW

4	21/11/25	CS	NPL IMPEDANCE AND WEIGHT UPDATE	DES: ASETH
3	21/07/16	PP	EDB UPDATE	DATE: 16/01/11
NO.	DATE	BY	REVISION	SCALE: NTS

SHEET 3 OF 3

EDBSC3A0300KK0C