



RECESSED LED

GDC3 10 (1X4) SERIES

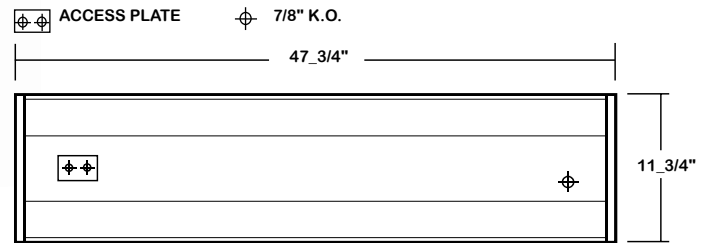
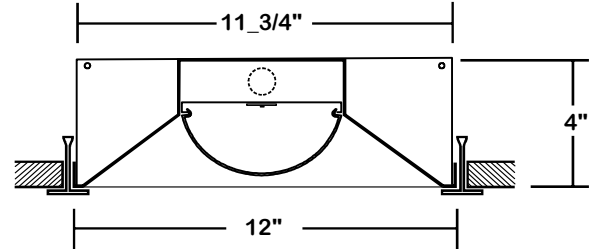
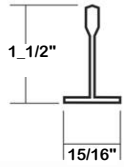
DIRECT ILLUMINATED CENTER LENSED GRID LUMINAIRE

DATE	
JOB	

WWW.LALIGHTING.COM
626-454-8300

RECESSED MOUNTED LED LUMINAIRE FOR INVERTED T-BAR CEILINGS

DIMENSIONS



APPLICATIONS

- Commercial, Office, Classroom

FEATURES

- 0-10V dimming driver standard (See *DRIVER OPTIONS* for other dimming types)
- Supports California Title 24 compliance

OPTIONS

- Full customization available upon request
- Additional lumen packages and color temperatures available
- Wireless control options available (See *SENSOR OPTIONS* for wireless controls)
- Emergency battery pack available (See *BATTERY PACK OPTIONS* for battery pack options)

SPECIFICATIONS

CONSTRUCTION

- 22 ga. cold rolled steel housing and reflector

FINISH

- High reflectance low gloss matte white finish

OPTICAL

- Frosted radial lens to maximize lumen output while cutting glare

ELECTRICAL

- High efficiency drivers coupled with long-life LEDs
- Service life tested at 50,000-148,000 hours (L70)
- Universal voltage 120V through 277V (347V / 480V available)
- Power Factor (PF) ≥ 0.9
- Total Harmonic Distortion (THD) $\leq 20\%$

LISTING

- UL USA and Canada listed / suitable for damp locations

WARRANTY

- 5-year limited warranty



Los Angeles Lighting Mfg. Co.
Contact Us
T: 626-454-8300 10141 Olney Street
F: 626-454-8399 El Monte, CA 91731
www.lalighting.com Made in the USA



Due to continued product improvements and enhancements, Los Angeles Lighting Manufacturing Company reserves the right to alter specifications, dimensions, data, and/or materials without notice. Please visit our website to view the most current information.

© 2022 LOS ANGELES LIGHTING MANUFACTURING CO. ALL RIGHTS RESERVED.

Revised: 10/05/18



ORDERING INFORMATION

EXAMPLE: GDC310-4-4L-BPL10-1DRDM-UNV-1/840

SERIES	LED LUMEN PACKAGE	EFFICACY	NOMINAL LENGTH	ELECTRICAL	DRIVER	VOLTAGE	# OF LED ROW	CRI / CCT
GDC310			4L		1DRDM	UNV	1	
GDC310 Direct Illuminated Center Lensed Grid LED Luminaire	2 Nom. 2000 Lumens 4 Nom. 4000 Lumens 6 Nom. 6000 Lumens 8 Nom. 8000 Lumens <i>*Additional Lumen Packages Available</i>	(Blank) Standard HE High Efficacy (Only 2000 / 4000 / 6000 lumens Systems)	4L 1' x 4'	BPL10 Emergency Battery Pack, Constant 10W Nom. 1500 lm <i>See BATTERY PACK OPTIONS for Options</i> WLC(XXXX) Wireless Control <i>See SENSOR OPTIONS for Options</i> *Leave Blank if Not Specified <i>Additional Electrical Options</i>	1DRDM 0-10V One Dimming Driver <i>See DRIVER OPTIONS for Options</i>	UNV 120V-277V <i>See DRIVER OPTIONS for Options</i>	1 One LED Row	830 80+CRI / 3000K Color Temp. 835 80+CRI / 3500K Color Temp. 840 80+CRI / 4000K Color Temp. 850 80+CRI / 5000K Color Temp. *Additional Color Temp. Available

SYSTEM DATA

THESE ARE THE MOST POPULAR LUMEN PACKAGES. PLEASE CONSULT FACTORY FOR ADDITIONAL SYSTEM DATA.

LED LUMEN PACKAGE	NORMAL AMBIENT TEMPERATURE PRODUCT CODE	DELIVERED LUMENS	SYSTEM WATTS	LUMINAIRE EFFICACY	AMBIENT TEMP.	FLUORESCENT EQUIVALENT	IES FILES
2000 Lumens (Nominal)	3-GDC310-2K-4L-1DRDM-UNV-1/835	1872 lm	16.9 W	111 lm/W	-20°C / 35°C	1-F32T8	*
	3-GDC310-2K-4L-1DRDM-UNV-1/840	1887 lm	17 W	111 lm/W			*
	GDC310-2-4L-1DRDM-UNV-1/840	1999.7 lm	16 W	124.9 lm/W			LA-T3292
	3-GDC310-2-4L-1DRDM-UNV-1/850	1928 lm	17.3 W	111 lm/W			*
4000 Lumens (Nominal)	3-GDC310-4K-4L-1DRDM-UNV-1/835	3394 lm	34.2 W	99 lm/W	-20°C / 35°C	2-F32T8, 1-F54T5HO	*
	3-GDC310-4K-4L-1DRDM-UNV-1/840	3395 lm	34.3 W	99 lm/W			*
	GDC310-4-4L-1DRDM-UNV-1/840	3820 lm	33.1 W	115.4 lm/W			LA-T3248
	3-GDC310-4K-4L-1DRDM-UNV-1/850	3420 lm	34.5 W	99 lm/W			*
6000 Lumens (Nominal)	GDC310-6-4L-1DRDM-UNV-1/840	5461 lm	52.3 W	104.4 lm/W	-20°C / 35°C	3-F32T8	*
8000 Lumens (Nominal)	GDC310-8-4L-1DRDM-UNV-1/840	7553 lm	51.8 W	145.7 lm/W	-20°C / 35°C	4-F32T8, 2-F54T5HO	*

LED LUMEN PACKAGE	NORMAL AMBIENT TEMPERATURE (HIGH EFFICACY) PRODUCT CODE	DELIVERED LUMENS	SYSTEM WATTS	LUMINAIRE EFFICACY	AMBIENT TEMP.	FLUORESCENT EQUIVALENT	IES FILES
2000 Lumens (Nominal)	GDC310-2HE-4L-1DRDM-UNV-1/840	1917 lm	12.0 W	159.8 lm/W	-20°C / 35°C	1-F32T8	*
4000 Lumens (Nominal)	3-GDC310-4KHE-4L-1DRDM-UNV-1/835	4270 lm	31.5 W	135.4 lm/W	-20°C / 35°C	2-F32T8, 1-F54T5HO	*
	3-GDC310-4KHE-4L-1DRDM-UNV-1/840	4284 lm	31.2 W	137.3 lm/W	-20°C / 35°C		*
	GDC310-4HE-4L-1DRDM-UNV-1/840	4093 lm	26.8 W	152.6 lm/W	-20°C / 35°C		LA-T3318
	3-GDC310-4KHE-4L-1DRDM-UNV-1/850	4336 lm	31.1 W	139.1 lm/W	-20°C / 35°C		*
6000 Lumens (Nominal)	3-GDC310-6KHE-4L-1DRDM-UNV-1/835	5994 lm	44.6 W	134.3 lm/W	-20°C / 35°C	3-F32T8	*
	3-GDC310-6KHE-4L-1DRDM-UNV-1/840	6188 lm	45.6 W	137.3 lm/W	-20°C / 35°C		*
	GDC310-6HE-4L-1DRDM-UNV-1/840	6214 lm	43.1 W	144.3 lm/W	-20°C / 35°C		*
	3-GDC310-6KHE-4L-1DRDM-UNV-1/850	6390 lm	44.8 W	142.6 lm/W	-20°C / 35°C		*



Los Angeles Lighting Mfg. Co.
Contact Us
T: 626-454-8300
F: 626-454-8399
www.lalighting.com

10141 Olney Street
El Monte, CA 91731
Made in the USA



Due to continued product improvements and enhancements, Los Angeles Lighting Manufacturing Company reserves the right to alter specifications, dimensions, data, and/or materials without notice. Please visit our website to view the most current information.

© 2022 LOS ANGELES LIGHTING MANUFACTURING CO. ALL RIGHTS RESERVED.

Revised: 10/05/18



MADE IN THE USA
BAA Compliant

SENSOR OPTIONS

LUTRON CONTROLS AND SENSORS

WLC(FCJS0) - Lutron® Vive PowPak® 0-10V Wireless Fixture Control

- One per fixture (external mount)
- Controls 1A of load or up to 3 drivers
- Universal Voltage (120V-277V)

WLC(FCJSE) - Lutron® Vive PowPak® EcoSystem Wireless Fixture Control

- One per fixture (external mount)
- Controls 1A of load or up to 3 drivers
- Universal Voltage (120V-277V)

**Must specify Lutron® Vive compatible driver*

WLC(VDO) - Lutron® Wireless Fixture Sensor

- Need Dexal driver
- One per fixture
- Turn light on/off based on motion
- 15 minutes time delay default
- Daylight sensor provide linear response to changes in light level.
- Up to 300 sq.ft major motion coverage and 150 sq.ft. minor motion coverage based on 9' mounting height.
- Work standalone or with Vive wireless control system
- Work with driver has integrated self-powered DALI link or Lutron EcoSystem driver (additional Lutron® digital link interface required)

WLC(VRF) - Lutron® Wireless Fixture Control

- Need Dexal driver
- One per fixture
- Wireless control module
- Work with Vive wireless control system
- Work with driver has integrated self-powered DaLI link or Lutron EcoSystem driver (additional Lutron® digital link interface required)

PJ2-2BRL - Lutron® Pico® 2-Button Wireless Remote

- Works with Wireless Fixture Controls
- Controls ON/OFF and dimming UP/DOWN

FC-SENSOR - Lutron® PowPak® Occupancy/Daylight Sensor

- Turns light ON/OFF based on motion
- Recommended mounting height of 8-12'
- For dry and damp locations
- Universal Voltage (120V-277V)

FC-VSENSOR - Lutron® PowPak® Vacancy/Daylight Sensor

- Turns light OFF when area is vacant
- Recommended mounting height of 8-12'
- For dry and damp locations
- Universal Voltage (120V-277V)



CONTROLS AND SENSORS

WLC(LEDRLU) - EnOcean® LED Relay Zone Controller

- Supports a single LED fixture or multiple daisy chained LED fixtures
- Module installed inside lighting fixture

ESRPU-W-EO - EnOcean® Rocker Switch – Single – Surface Mount

- Wireless single rocker switch with mounting plate
- No batteries needed

EDRPU-W-EO - EnOcean® Rocker Switch – Double – Surface Mount

- Wireless double rocker switch with mounting plate
- No batteries needed

S3054-N300 - EnOcean® Navigan NWC 300U – Commissioning Tool

- Navigan Wireless Commissioner is used to configure EnOcean controllers & sensors
- It can be used to define link tables, change parameters/settings, and to edit & store projects
- Configuration settings can be saved and cloned to enable quick configuration
- Connectivity is through the NWC 300U USB Stick

EOSWU-W-EO - EnOcean® Occupancy Sensor – Wall Mount

- Wireless wall mounted occupancy sensor
- Solar powered - no batteries needed (coin battery operated in low light conditions)
- PIR motion sensor with both wide angle (50') and long range (100') options
- Mounting height: 6-8 feet

EOSCU-W-EO - EnOcean® Occupancy Sensor – Ceiling Mount

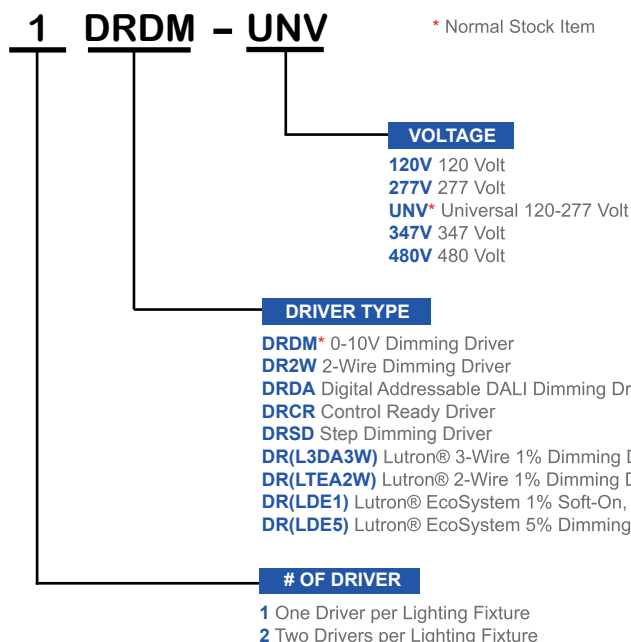
- Wireless ceiling mounted occupancy sensor
- Solar powered - no batteries needed (coin battery operated in low light conditions)
- PIR motion sensor with 360 degree viewing angle lens (34' diameter)
- Mounting height: 7-10 feet

ELLSU-W-EO - EnOcean® Light Level Sensor – Ceiling Mount

- Light Level sensor that measures and reports the level of available natural light
- Solar powered - no batteries needed (coin battery operated in low light conditions)
- Enables implementation of daylight harvesting control systems
- Mounting position: At the ceiling, close to ambient light source

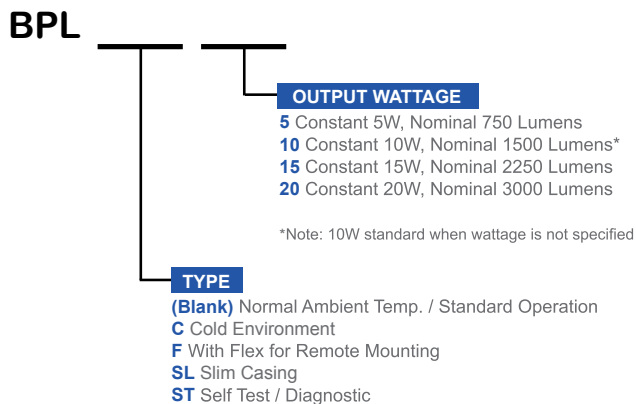
DRIVER OPTIONS

PLEASE CONSULT FACTORY TO SEE IF YOUR SELECTED DRIVER OPTION WORKS WITH THIS FIXTURE.



BATTERY PACK OPTIONS

PLEASE CONSULT FACTORY TO SEE IF YOUR SELECTED BATTERY PACK OPTION WORKS WITH THIS FIXTURE.



Los Angeles Lighting Mfg. Co.

Contact Us
 T: 626-454-8300 10141 Olney Street
 F: 626-454-8399 El Monte, CA 91731
 www.lalighting.com Made in the USA



Due to continued product improvements and enhancements, Los Angeles Lighting Manufacturing Company reserves the right to alter specifications, dimensions, data, and/or materials without notice. Please visit our website to view the most current information.

© 2022 LOS ANGELES LIGHTING MANUFACTURING CO. ALL RIGHTS RESERVED.

Revised: 10/05/18

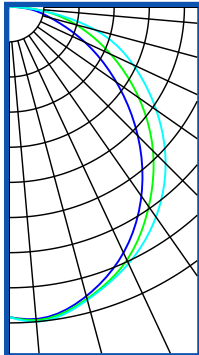
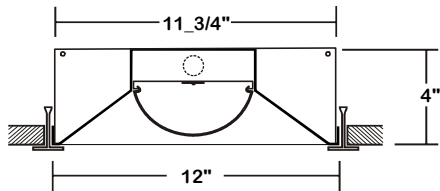


MADE IN THE USA
 BAA Compliant

PHOTOMETRIC DATA - GDC310, 1X4

GDC310-2-4L-1DRDM-UNV-1/840

TEST NO. = LA-T3292
 LED TYPE = 48 LED MODULE
 NO. OF MODULE = 2
 SYSTEM WATT (W) = 16
 CRI ≥ 80
 L70(Hrs.) ≥ 50,000
 PHOTOMETRY TYPE = C



CANDLEPOWER

ANGLE	END	45	CROSS
0	729	729	729
5	725	721	715
15	689	695	706
25	629	641	656
35	541	568	593
45	436	476	510
55	317	376	408
65	203	258	259
75	108	120	86
85	38	29	18
90	1.9	0.6	0.4
95	0	0	0
105	0	0	0
115	0	0	0
125	0	0	0
135	0	0	0
145	0	0	0
155	0	0	0
165	0	0	0
175	0	0	0
180	0	0	0

ZONAL LUMEN SUMMARY

DEGREES	LUMENS	% LAMP	% FIXTURE
0-30	563	25.13	28.17
0-40	920	41.02	45.99
0-60	1618	72.18	80.93
0-90	1999	89.18	99.99
90-120	0.45	0.01	0.01
90-150	0.45	0.01	0.01
90-180	0.45	0.01	0.01
0-180	2000	89.19	100.0

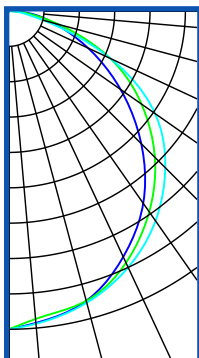
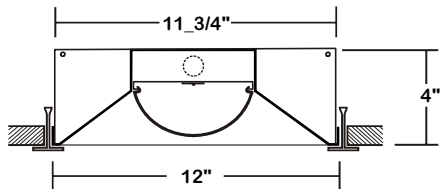
Luminaire Output = 1999.7 lumens
 Luminaire Efficacy = 124.98 lm/W

SPACING CRITERION

ALONG	ACROSS
1.19	1.27

GDC310-4-4L-1DRDM-UNV-1/840

TEST NO. = LA-T3248
 LED TYPE = 48 LED MODULE
 NO. OF MODULE = 2
 SYSTEM WATT (W) = 33.1
 CRI ≥ 80
 L70(Hrs.) ≥ 50,000
 PHOTOMETRY TYPE = C



CANDLEPOWER

ANGLE	END	45	CROSS
0	1404	1404	1404
5	1381	1364	1385
15	1324	1324	1332
25	1197	1226	1248
35	1036	1082	1130
45	828	913	978
55	604	716	789
65	388	496	497
75	207	230	162
85	75	54	35
90	3.1	1.3	0.9
95	0	0	0
105	0	0	0
115	0	0	0
125	0	0	0
135	0	0	0
145	0	0	0
155	0	0	0
165	0	0	0
175	0	0	0
180	0	0	0

ZONAL LUMEN SUMMARY

DEGREES	LUMENS	% LAMP	% FIXTURE
0-30	1074	25.07	28.11
0-40	1754	40.94	45.91
0-60	3091	72.14	80.89
0-90	3820	89.17	100.0
90-120	0.45	0.01	0.01
90-150	0.45	0.01	0.01
90-180	0.45	0.01	0.01
0-180	3821	89.18	100.0

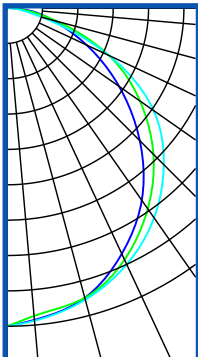
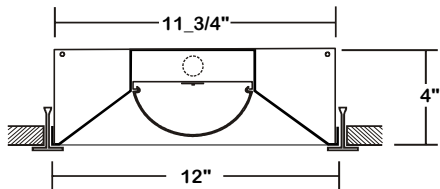
Luminaire Output = 3820 lumens
 Luminaire Efficacy = 115.43 lm/W

SPACING CRITERION

ALONG	ACROSS
1.18	1.26

GDC310-4HE-4L-1DRDM-UNV-1/840

TEST NO. = LA-T3318
 LED TYPE = 48 LED MODULE
 NO. OF MODULE = 2
 SYSTEM WATT (W) = 26.8
 CRI ≥ 80
 L70(Hrs.) ≥ 50,000
 PHOTOMETRY TYPE = C



CANDLEPOWER

ANGLE	END	45	CROSS
0	1485	1485	1485
5	1485	1468	1470
15	1410	1420	1432
25	1281	1315	1337
35	1104	1164	1207
45	886	977	1040
55	651	766	851
65	420	529	531
75	221	245	175
85	78.71	59.46	36.09
90	3.46	1.19	0.94
95	0	0	0
105	0	0	0
115	0	0	0
125	0	0	0
135	0	0	0
145	0	0	0
155	0	0	0
165	0	0	0
175	0	0	0
180	0	0	0

ZONAL LUMEN SUMMARY

DEGREES	LUMENS	% LAMP	% FIXTURE
0-30	1151	25.1	28.1
0-40	1879	41.0	45.9
0-60	3311	72.2	80.9
0-90	4092	89.2	100.0
90-120	0.5	0.00	0.00
90-150	0.45	0.00	0.00
90-180	0.5	0.00	0.00
0-180	4093	89.2	100.0

Luminaire Output = 4092.7 lumens
 Luminaire Efficacy = 157.71 lm/W

SPACING CRITERION

ALONG	ACROSS
1.19	1.27

This Space is intentionally left blank.

