



# SECURITY BCL 100 SERIES



LED CANOPY SECURITY WET LOCATION WITH POLYCARBONATE LENS

INTERACTIVE BUTTONS

ORDERING INFO SYSTEM DATA DRIVER OPTIONS SENSOR OPTIONS PHOTOMETRIC DATA

JOB

TYPE

DATE

LALIGHTING.COM 626-454-8300

## SURFACE/SUSPENDED MOUNTED LED LUMINAIRE

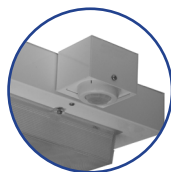
## DIMENSIONS



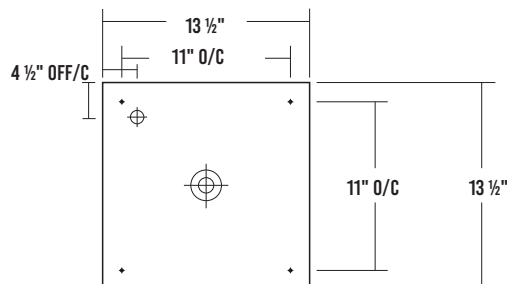
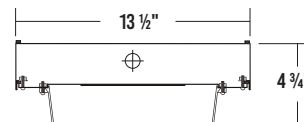
2" K.O.



7/8" K.O. on side of housing



\*Optional External Mount Sensor



## SPECIFICATIONS

### SYSTEM OPTIONS

Legacy Models:

- 3000 and 4000 Lumen Output

[See page 2 for more information](#)

Next Generation Models:

- Wide Range of Lumen Outputs, High Luminaire Efficacy

[See page 3 for more information](#)

### CONSTRUCTION

- 20 ga. Electro-galvanized steel construction
- Neoprene gasket back housing
- Aluminum heat sink cover
- Stainless steel fasteners
- Two side knockouts for 1/2" conduit (knockouts on opposite sides of fixture)

### FINISH

- Baked white powder coated finish / minimum reflectance 90%

### OPTICAL

- Injection molded, Polycarbonate lens

### ELECTRICAL

- High efficiency drivers coupled with long-life LEDs
- Service life tested at 50,000 hours (L70)
- Universal voltage 120V through 277V (347V / 480V available)
- Power Factor (PF)  $\geq 0.9$
- Total Harmonic Distortion (THD)  $\leq 20\%$

### LISTING

- UL USA and Canada listed / suitable for wet location

### WARRANTY

- 5-year limited warranty
- 10-year limited warranty available

## APPLICATIONS

- Canopy
- Educational
- Facilities
- Corridors
- Stairwell
- Pedestrian Tunnel
- Passageway

## FEATURES

- 0-10V Dimming driver standard
- Wet Location (UL Listed with sprinkler test)
- Supports California Title 24 compliance

## OPTIONS

- Controls
- Custom housing colors
- Tamper proof screws
- Pendant mounting adapter
- Emergency battery pack
- Customization available upon request

## CUSTOM COLORS

BLK - Matte Black

CS - Camaro Silver

BZ - Statuary Bronze



Variety of RAL colors available upon request.



**Los Angeles Lighting Mfg. Co.**  
Headquarters  
10141 Olney Street  
El Monte, CA 91731  
Made in the USA  
Contact Us  
T: 626-454-8300  
F: 626-454-8399  
www.lalighting.com



Due to continued product improvements and enhancements, Los Angeles Lighting Manufacturing Company Reserves the right to alter specifications, dimensions, data, and/or materials without notice. Please visit our website to view the most current information.

© LOS ANGELES LIGHTING MANUFACTURING CO. ALL RIGHTS RESERVED.

Revised 01/31/22

1 of 7



# BCL 100 (1'X1') CANOPY SECURITY WET LOCATION WITH POLYCARBONATE LENS LED LUMINAIRE

## Legacy Models

3000 or 4000 Lumens. (Step-Dimming Standard on 4000 Lumen model)

## ORDERING INFORMATION

EXAMPLE: BCL100-1-1L-DRDM740-UNV-840

[BACK TO TOP](#)

SERIES	# OF LED ROWS	NOMINAL LENGTH	COLOR	MECHANICAL	CONTROLS	ELECTRICAL	DRIVER	VOLTAGE	CRI / CCT
<b>BCL100</b> • Canopy Security Wet Location with Polycarbonate lens	<b>1</b> One LED Row	<b>1L</b> • 1' x 1'	<b>(Blank)</b> • Standard White  <b>BLK</b> • Matte Black  <b>BZ</b> • Statuary Bronze  <b>CS</b> • Camaro Silver  *Consult factory for available RAL options	<b>TP</b> • Tamper Proof Screws • Hex Socket w/Post  <b>SMA</b> • Pendant Mounting Adapter (Safety Cable Set Included) • Not Suitable for Wet Location  *Leave blank if not specified	<b>MSH(xx)</b> • Motion Sensor High Frequency (Microwave)  <b>MSW(xx)</b> • Motion Sensor Wet Location  <b>PCS/SH</b> • Photocell Sensor with Light Shield Dome  <b>WLC(LED RU)</b> • Wireless Control  *Contact factory for additional electrical options  *Leave blank if not specified	<b>BPL1.5</b> • Emergency Battery Pack • 1500 lm  *Leave blank if not specified	<b>DRDM740</b> • 3000 lumens system, 0-10V Dimming Driver, 740mA  <b>DRCDM1050</b> • 4000 lumens system, 0-10V and Step Dimming Combined Driver, 1050mA  *Contact factory for additional driver options	<b>UNV</b> • 120V-277V  *Contact factory for additional voltage options	<b>840</b> • 80+CRI / 4000K

## SYSTEM DATA

ADDITIONAL LUMEN PACKAGES AVAILABLE. CONTACT CUSTOMER SERVICE FOR MORE INFORMATION

[BACK TO TOP](#)

Nominal LED Lumen Package	Normal Ambient Temperature Product Code	Delivered Lumens	System Watts	Luminaire Efficacy	Ambient Temp.	Fluorescent / HID Equivalent	IES Files
3000 Lumens	BCL100-1-1L-DRDM740-UNV-840	3172 lm	29 W	109.4 lm/W	-20°C / 35°C	2-26W CFL	*
4000 Lumens	BCL100-1-1L-1DRCDM1050-UNV-840	4042 lm	41 W	98.6 lm/W	-20°C / 35°C	2-32W CFL	*

**NOTE:**  
System data is based on 120V input voltage. Actual performance may differ as a result of end-user environment and application.  
This fixture has been tested and listed in accordance with UL Standards. L.A. Lighting certifies that it will operate safely when installed properly, and within an ambient temperature range noted in the system data table.  
Additional lumen packages and color temperatures available.



BCL100-1-1L-1DRCDM740-UNV-840  
BCL100-1-1L-MSx-1DRCDM740-UNV-840



**Los Angeles Lighting Mfg. Co.**  
Headquarters  
10141 Olney Street  
El Monte, CA 91731  
Made in the USA  
Contact Us  
T: 626-454-8300  
F: 626-454-8399  
www.lalighting.com



Due to continued product improvements and enhancements, Los Angeles Lighting Manufacturing Company Reserves the right to alter specifications, dimensions, data, and/or materials without notice.  
Please visit our website to view the most current information.

© LOS ANGELES LIGHTING MANUFACTURING CO. ALL RIGHTS RESERVED.

Revised 01/31/22

2 of 7



# BCL 100 (1'X1') CANOPY SECURITY WET LOCATION WITH POLYCARBONATE LENS LED LUMINAIRE

## Next Generation Models

Wide Range of Lumen Outputs, High Luminaire Efficacy

### ORDERING INFORMATION

EXAMPLE: BCL100-4-1L-DRDM-UNV-1/840

[BACK TO TOP](#)

SERIES	NOMINAL LED LUMENS	NOMINAL LENGTH	COLOR	MECHANICAL	CONTROLS	ELECTRICAL	DRIVER	VOLTAGE	CRI / CCT
<b>BCL100</b> <ul style="list-style-type: none"> <li>Canopy Security Wet Location with Polycarbonate lens</li> </ul>	<b>2</b> - 2000lm <b>3</b> - 3000lm <b>4</b> - 4000lm <b>6</b> - 6000lm <b>8</b> - 8000lm	<b>1L</b> • 1' x 1'	<b>(Blank)</b> <ul style="list-style-type: none"> <li>Standard White</li> </ul> <b>BLK</b> <ul style="list-style-type: none"> <li>Matte Black</li> </ul> <b>BZ</b> <ul style="list-style-type: none"> <li>Statuary Bronze</li> </ul> <b>CS</b> <ul style="list-style-type: none"> <li>Camaro Silver</li> </ul> *Consult factory for available RAL options	<b>TP</b> <ul style="list-style-type: none"> <li>Tamper Proof Screws</li> <li>Hex Socket w/Post</li> </ul> <b>SMA</b> <ul style="list-style-type: none"> <li>Pendant Mounting Adapter (Safety Cable Set Included)</li> <li>Not Suitable for Wet Location</li> </ul> *Leave blank if not specified	<b>MSH(xx)</b> <ul style="list-style-type: none"> <li>Motion Sensor High Frequency (Microwave)</li> </ul> <b>MSW(xx)</b> <ul style="list-style-type: none"> <li>Motion Sensor Wet Location</li> </ul> <b>PCS/SH</b> <ul style="list-style-type: none"> <li>Photocell Sensor with Light Shield Dome</li> </ul> <b>WLC(LED RU)</b> <ul style="list-style-type: none"> <li>Wireless Control</li> </ul> *Contact factory for additional electrical options *Leave blank if not specified	<b>BPL1.5</b> <ul style="list-style-type: none"> <li>Emergency Battery Pack</li> <li>1500 lm</li> </ul> *Leave blank if not specified	<b>DRDM</b> <ul style="list-style-type: none"> <li>0-10V Dimming Driver</li> </ul> <b>DRSD</b> <ul style="list-style-type: none"> <li>Step Dimming Driver</li> </ul> <b>DR2W</b> <ul style="list-style-type: none"> <li>2-Wire Phase Dimming Driver</li> <li>Requires Specific Voltage Callout</li> </ul> *Contact factory for additional driver options	<b>UNV</b> <ul style="list-style-type: none"> <li>120V-277V</li> </ul> <b>120V</b> <ul style="list-style-type: none"> <li>120 Volt</li> </ul> <b>277V</b> <ul style="list-style-type: none"> <li>277 Volt</li> </ul> <b>347V</b> <ul style="list-style-type: none"> <li>347 Volt</li> </ul> <b>480V</b> <ul style="list-style-type: none"> <li>480 Volt</li> </ul> *Contact factory for additional voltage options	<b>840</b> <ul style="list-style-type: none"> <li>80+CRI / 4000K</li> </ul> <b>850</b> <ul style="list-style-type: none"> <li>80+CRI / 5000K</li> </ul>

### SYSTEM DATA

ADDITIONAL LUMEN PACKAGES AVAILABLE. CONTACT CUSTOMER SERVICE FOR MORE INFORMATION

[BACK TO TOP](#)

Nominal LED Lumen Package	Normal Ambient Temperature Product Code	Delivered Lumens	System Watts	Luminaire Efficacy	Ambient Temp.	Fluorescent / HID Equivalent	IES Files
2000 Lumens	BCL100-2-1L-DRDM-UNV- 1/840	2377 lm	17.4 W	136.6 lm/W	-20°C / 35°C	2-13WCFL	*
3000 Lumens	BCL100-3-1L-DRDM-UNV-1/840	3452 lm	24.8 W	139.1 lm/W	-20°C / 35°C	2-26WCFL	*
4000 Lumens	BCL100-4-1L-DRDM-UNV-1/840	4612 lm	32.6 W	141.7 lm/W	-20°C / 35°C	2-32WCFL	*
6000 Lumens	BCL100-6-1L-DRDM-UNV-1/840	6054 lm	48.1 W	125.8 lm/W	-20°C / 35°C	4-26WCFL, 2-57WCFL	*
8000 Lumens	BCL100-8-1L-DRDM-UNV-1/840	7858 lm	64.9 W	121.1 lm/W	-20°C / 35°C	4-32WCFL, 2-70WCFL, 1-175W HID	*

#### NOTE:

System data is based on 120V input voltage. Actual performance may differ as a result of end-user environment and application.

This fixture has been tested and listed in accordance with UL Standards. L.A. Lighting certifies that it will operate safely when installed properly, and within an ambient temperature range noted in the system data table.

Additional lumen packages and color temperatures available.

### PHOTOMETRIC DATA

#### BCL100-2-1L-DRDM-UNV-1/840

**TEST NO. = LA-T3548**  
**LED TYPE = 6" x 6" LED MODULE**  
**NO. OF MODULE = 1**  
**SYSTEM WATT (W) = 18.1**  
**CRI ≥ 80**  
**L70(Hrs.) ≥ 50,000**  
**PHOTOMETRY TYPE = C**

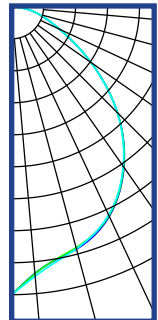
#### ZONAL LUMEN SUMMARY

DEGREES	LUMENS	% LAMP	% FIXTURE
0-30	672	24.5	38.1
0-40	1045	42.7	59.3
0-60	1568	64.2	89.1
0-90	1761	72.1	100.0
90-120	0.3	0.0	0.0
90-150	0.0	0.0	0.0
90-180	0.0	0.0	0.0
0-180	1761	72.1	100.0

#### SPACING CRITERION

ALONG	ACROSS
0.79	0.78

Luminaire Output = 1761.20 lumens  
 Luminaire Efficacy = 138.90 lm/W  
 Luminaire Efficiency = 72.06%



**Los Angeles Lighting Mfg. Co.**  
 Headquarters  
 10141 Olney Street  
 El Monte, CA 91731  
 Made in the USA  
 Contact Us  
 T: 626-454-8300  
 F: 626-454-8399  
 www.lalighting.com



Due to continued product improvements and enhancements, Los Angeles Lighting Manufacturing Company Reserves the right to alter specifications, dimensions, data, and/or materials without notice.  
 Please visit our website to view the most current information.

© LOS ANGELES LIGHTING MANUFACTURING CO. ALL RIGHTS RESERVED.

Revised 01/31/22

3 of 7



## MECHANICAL OPTIONS

### PENDANT MOUNTING ADAPTER WITH SAFETY CABLE SET

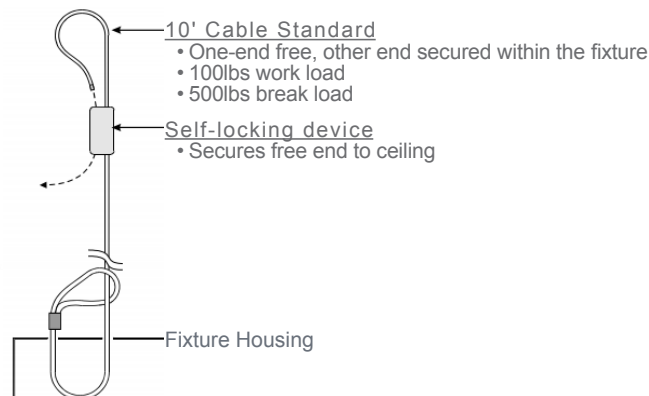
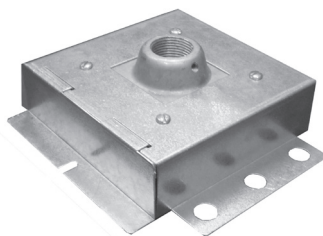
#### SMA

- 20 ga. die formed galvanized steel mounting adapter for 3/4" pipe
- Die cast aluminum hub 3/4" pipe pre-installed
- Designed for single point pendant mount applications

*Note: Must request pre-punched holes from factory*

#### Each unit consist of:

- One (1) mounting adapter assembly with lid
- Four (4) 3/8-16 mounting bolts
- One (1) sheet metal screw
- One (1) set screw
- 10ft safety cable, one end free and the other end secured within fixture
- Self-locking device, secures free end to ceiling member
- Factory inserted riv-nuts



### TAMPER PROOF SCREWS

#### TP

- Hex Pin Stainless Steel Tamper Proof Screws



## CONTROL OPTIONS



**enocean®**

#### WLC(LED RU) - EnOcean LED Relay Zone Controller

- Supports a single LED fixture or multiple daisy chained LED fixtures
- Module installed inside lighting fixture

#### ESRPU-W-EO - EnOcean Rocker Switch – Single – Surface Mount

- Wireless single rocker switch with mounting plate
- No batteries needed

#### EDRPU-W-EO - EnOcean Rocker Switch – Double – Surface Mount

- Wireless double rocker switch with mounting plate
- No batteries needed

#### S3054-N300 - EnOcean Navigan NWC 300U – Commissioning Tool

- Navigan Wireless Commissioner is used to configure EnOcean controllers & sensors
- It can be used to define link tables, change parameters/settings, & to edit & store projects
- Configuration settings can be saved & cloned to enable quick configuration
- Connectivity is through the NWC 300U USB Stick

#### EOSWU-W-EO - EnOcean Occupancy Sensor – Wall Mount

- Wireless wall mounted occupancy sensor
- Solar powered - no batteries needed (coin battery operated in low light conditions)
- PIR motion sensor with both wide angle (50ft) and long range (100ft) options
- Mounting height: 6-8ft

#### EOSCU-W-EO - EnOcean Occupancy Sensor – Ceiling Mount

- Wireless ceiling mounted occupancy sensor
- Solar powered - no batteries needed (coin battery operated in low light conditions)
- PIR motion sensor with 360° viewing angle lens (34' diameter)
- Mounting height: 7-10ft

#### ELLSU-W-EO - EnOcean Light Level Sensor – Ceiling Mount

- Light Level sensor that measures and reports the level of available natural light
- Solar powered - no batteries needed (coin battery operated in low light conditions)
- Enables implementation of daylight harvesting control systems
- Mounting position: At the ceiling, close to ambient light source



**Los Angeles Lighting Mfg. Co.**

Headquarters  
10141 Olney Street  
El Monte, CA 91731  
Made in the USA

Contact Us  
T: 626-454-8300  
F: 626-454-8399  
www.lalighting.com



Due to continued product improvements and enhancements, Los Angeles Lighting Manufacturing Company Reserves the right to alter specifications, dimensions, data, and/or materials without notice. Please visit our website to view the most current information.

© LOS ANGELES LIGHTING MANUFACTURING CO. ALL RIGHTS RESERVED.

Revised 01/31/22

4 of 7



## CONTROL OPTIONS

BACK TO TOP

**MS(W)(Lens Option) - Motion Sensor<sup>1</sup>**

- Turns light ON/OFF with motion detection

**MSSD(W)(Lens Option) - Motion Sensor – Step Dimming (Bi-Level)<sup>1</sup>**

- Step-dims output with motion detection

**MSPC(W)(Lens Option) - Motion Sensor & Photocell<sup>1</sup>**

- Holds lights OFF when sufficient daylight is present regardless of motion detection

**MSPCD(W)(ADC)(Lens Option) - Motion Sensor & Photocell Dimming (Auto Dim Control)<sup>1</sup>**

- Automatically dims output through preset photocell
- ON/OFF with motion detection

**MSPCD(W)(ANL)(Lens Option) - Motion Sensor & Photocell Dimming (Auto Night Light)<sup>1</sup>**

- Automatically dims output through preset photocell
- Low setting when unoccupied full ON with motion
- For 24 hour use

**MSPCDBT(W)(Lens Option) - Motion Sensor & Photocell Dimming (Setup w/Smartphone App)<sup>2</sup>**

- Field adjustable dimming sensor capabilities:
  - » Step-dims (HIGH/LOW output)
  - » Auto Dim Control (dim to desired foot-candles, ON/OFF with motion)
  - » Auto Night Light (dim to desired foot-candles, LOW without motion)
- Holds lights OFF when sufficient daylight is present regardless of motion detection
- Adjustable ramp up & fade down time
- Remote setup & adjustment via the iOS® or Android® sensor configuration app

**MSPCDR(W)(Lens Option) - Motion Sensor & Photocell Dimming (setup w/Remote Control)<sup>2</sup>**

- Field adjustable dimming sensor capabilities:
  - » Step-dims (HIGH/LOW output)
  - » Auto Dim Control (dim to desired foot-candles, ON/OFF with motion)
  - » Auto Night Light (dim to desired foot-candles, LOW without motion)
- Holds lights OFF when sufficient daylight is present regardless of motion detection
- Adjustable ramp up & fade down time
- Remote setup & adjustment via handheld wireless tool sold separately
- P/N: REMOTE(Mfg. Name)

**Mounting Heights**<sup>1</sup> - 8-45ft<sup>2</sup> - 8-40ft**MS E W (LW)**

LENS OPTION		COVERAGE
(LW)	Extra Wide	6x Height
(H)	High Bay	3x Height
(L)	Standard	2x Height
(A)	Aisle Way	3x Height
(Blank)	No Specified Lens Option	

**(Blank)** - Leave blank for damp listed**W** - Wet Listed**(Blank)** - Leave blank for default mounting position**E** - End mounted sensor location**MS** - Turns light ON/OFF based on motion detection**MSPC** - Holds light OFF when sufficient daylight is present regardless of motion**MSSD** - Step-dims output with motion detection**MSPCD** - Automatically dims output through preset photocell, ON/OFF with motion detection**PCS** - Photocell**PCSD** - Photocell with step-dimming*\*Not all sensor configurations allow for apply to all fixtures.**Please consult factory for additional information.***Lens Options***\*Not all sensor configurations allow for alternative lens configuration. Please consult factory for additional information.*

## HIGH FREQUENCY MOTION SENSORS

**MSH - Motion Sensor High Frequency (Microwave)**

- Super high frequency motion sensor (also known as microwave sensor) which detects movement when installed behind low density fixture materials, such as polycarbonate, acrylic and glass diffusers
- Turns light ON/OFF based on motion detection
- Fixture mounting height ~30ft

**MSHSD - Motion Sensor High Frequency Step Dimming (Microwave)**

- Step-dims output with motion detection
- Turns light ON/OFF based on motion detection
- Fixture mounting height ~30ft



**Los Angeles Lighting Mfg. Co.**  
 Headquarters  
 10141 Olney Street  
 El Monte, CA 91731  
 Made in the USA

Contact Us  
 T: 626-454-8300  
 F: 626-454-8399  
 www.lalighting.com



Due to continued product improvements and enhancements, Los Angeles Lighting Manufacturing Company Reserves the right to alter specifications, dimensions, data, and/or materials without notice. Please visit our website to view the most current information.

© LOS ANGELES LIGHTING MANUFACTURING CO. ALL RIGHTS RESERVED.

Revised 01/31/22

5 of 7



## DRIVER OPTIONS

## BATTERY PACK OPTIONS

BACK TO TOP

DRDM ( ) ( ) UNV

## VOLTAGE

<b>120V</b>	Universal 120-277V (For DR2W Driver Type) <i>*Standard Stock Item</i>
<b>277V</b>	120 Volt (For DR2W Driver Type)
<b>UNV</b>	277 Volt (For DR2W Driver Type)
<b>347V</b>	347 Volt
<b>480V</b>	480 Volt

## SPECIFIC DRIVER

<b>XXX</b>	Manufacturer's Name/Part Number
<b>Blank</b>	Not Specified

## WARRANTY

<b>Blank</b>	5-Year Limited Warranty - Standard
<b>TY</b>	10-Year Limited Warranty

## DRIVER TYPE

<b>DRDM</b>	0-10V Dimming Driver <i>*Standard Stock Item</i>
<b>DRDM1</b>	0-10V Dimming Driver, 1% Dimming
<b>DR2W</b>	2-Wire Phase Dimming Driver (TRIAC, Mark 10) Please Specify Voltage in Voltage Field
<b>DRDA</b>	Digital Addressable DALI Dimming Driver
<b>DRSD</b>	Step Dimming Driver
<b>DR(LTEA2W)</b>	Lutron® 2-Wire, 1% Dimming Driver (120V Forward Phase only)
<b>DR(LDE1)</b>	Lutron® EcoSystem 1% Soft-On, Fade-to-Black
<b>DRCR(DXL)</b>	Osram Dexas Driver
<b>DRCR(SR)</b>	Signify Sensor Ready Driver
<b>DRCR(XXX)</b>	Control Ready Driver (Specify Driver Manufacturer)

## BATTERY PACK OPTIONS

BACK TO TOP

LED EMERGENCY BATTERY PACKS	
<b>BPL</b>	<b>1.5 (2H)</b> Minimum 90-minute operation unless otherwise noted
	<b>OTHER SPECIFICATION</b> (Manufacturer, Run Time, etc.)
	<b>2H</b> 2 Hours
	<b>LUMEN PACKAGE</b>
	<b>0.7</b> Nominal 750 Lumens
	<b>1.5</b> Nominal 1500 Lumens <i>*Standard Stock Item</i>
	<b>3.0</b> Nominal 3000 Lumens
	<b>4.0</b> Nominal 4000 Lumens (Additional lumen packages available)
	<b>TYPE</b>
	<b>(Blank)</b> Normal Ambient Temp. / Standard Operation
	<b>C</b> Cold Environment (-20°C)
	<b>F</b> Flex Cable for Remote Mounting
	<b>SL</b> Slim Casing
	<b>ST</b> Self Test / Diagnostic



**Los Angeles Lighting Mfg. Co.**  
 Headquarters  
 10141 Olney Street  
 El Monte, CA 91731  
 Made in the USA

Contact Us  
 T: 626-454-8300  
 F: 626-454-8399  
 www.lalighting.com



Due to continued product improvements and enhancements, Los Angeles Lighting Manufacturing Company Reserves the right to alter specifications, dimensions, data, and/or materials without notice. Please visit our website to view the most current information.

© LOS ANGELES LIGHTING MANUFACTURING CO. ALL RIGHTS RESERVED.

Revised 01/31/22

6 of 7

