

SMA

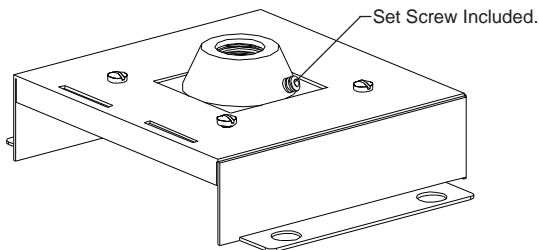
High-Bay Mounting Adapter

WARNING
RISK OF FIRE AND ELECTRIC SHOCK.
THIS PRODUCT IS TO BE INSTALLED BY
A QUALIFIED ELECTRICIAN ONLY.

PARTS CHECK LIST

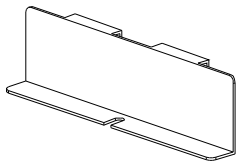
• High-bay Mounting Adapter Box x 1

• 3/8-16 Bolt x 4



• High-bay Mounting Adapter Lid x 1

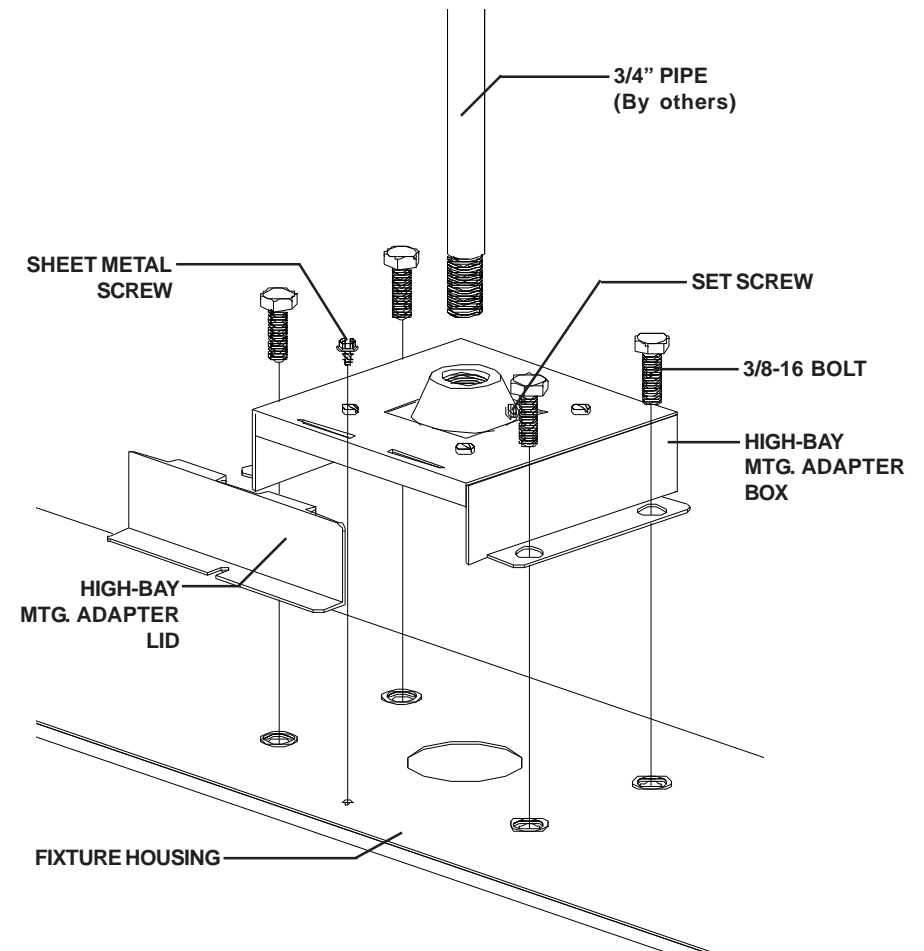
• Sheet Metal Screw x 1



Los Angeles Lighting Mfg. Co.
10141 OLNEY ST. / EL MONTE, CA 91731
Tel : 626-454-8300 Fax : 626-454-8399
www.lalighting.com

JUNE-2009

INSTALLATION INSTRUCTIONS



Step1

Install **HIGH-BAY MTG. ADAPTER BOX** to the existing **3/4 inch PIPE**, tighten the **SET SCREW**.

Step2

Secure **FIXTURE HOUSING** to the **HIGH-BAY MTG. ADAPTER BOX** using provided four **3/8-16 BOLTS**.

Step3

Install **HIGH-BAY MTG. ADAPTER LID**, use provided sheet metal screw to secure the **LID** to the **FIXTURE HOUSING**.