



BAYLIGHTER®

EBY150 SERIES

High Bay Luminaire



- High Bay Luminaire
- Quarter Turn Rotary Locking Sockets
- Frame & Lens Assembly With Safety Cables
- One Way Polyurethane Gasketed
- Removable Wiring Access Plate
- Stem, Cable or Chain Mountable
- Suitable for Damp Locations
- Available with:
 - Fluorescent, LED and LED T8 (Internally Driven)
 - .040 Aluminum Fixture Housing
 - 95% Enhanced Specular Aluminum Reflectors
 - Variety of Lenses
 - Emergency Battery Pack
 - Sensor
 - 11ga. Wire Guard
 - Die Cast Hub For 3/4" Pipe (4' Fixture Only)

Photometric Data and IES Files are Available on www.lalighting.com

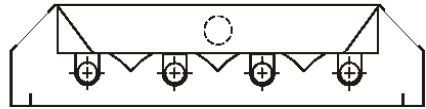
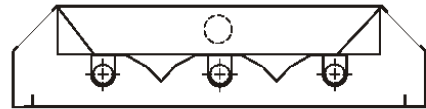
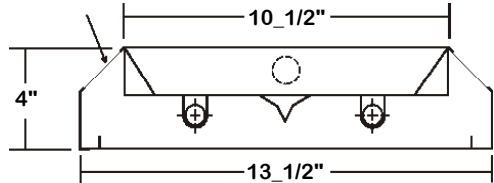


LOS ANGELES LIGHTING MFG. CO.
 10141 OLNEY ST. / EL MONTE, CA 91731
TEL : 626-454-8300 FAX : 626-454-8399
www.lalighting.com



EBY150 SERIES

CROSS SECTION

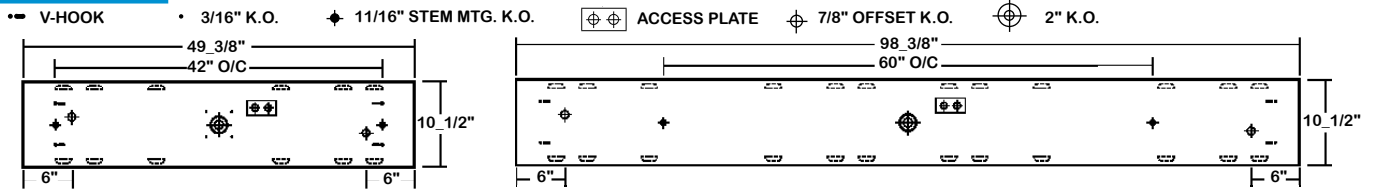


- ALUMINUM REFLECTOR SECURED WITH QUARTER TURN FASTENERS FOR EASE OF MAINTENANCE.

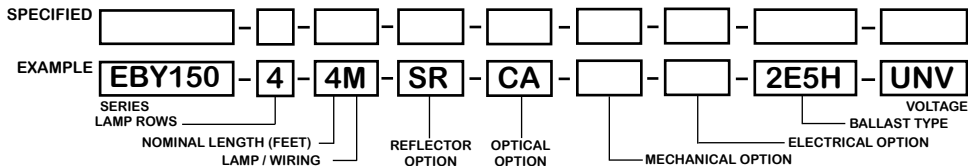
CATALOG NUMBER

	NOMINAL LENGTH	TOTAL LAMPS		NOMINAL LENGTH	TOTAL LAMPS
EBY150-2-4M	4'	2	EBY150-2-4R	4'	2
EBY150-3-4M	4'	3	EBY150-3-4R	4'	3
EBY150-4-4M	4'	4	EBY150-4-4R	4'	4
EBY150-2-8MT	8'	4	EBY150-2-8RT	8'	4
EBY150-3-8MT	8'	6	EBY150-3-8RT	8'	6
EBY150-4-8MT	8'	8	EBY150-4-8RT	8'	8

BACK PLATE



ORDERING GUIDE



NOTE: LAMP/WIRING*
 M = Miniature Bi-Pin T5
 R = Medium Bi-Pin T8
 MT = Miniature Bi-Pin T5, Tandem Wiring
 RT = Medium Bi-Pin T8, Tandem Wiring

OPTIONS AND ACCESSORIES

REFLECTOR OPTIONS

Specular Aluminum Reflector (95%)
 White Reflector

SUFFIX
 SR
 WR

OPTICAL OPTIONS

Clear Acrylic
 Clear Prismatic Acrylic
 Polycarbonate Lenses
 High Impact Acrylic
 Note: Other Lens Available Upon Request

SUFFIX
 CA
 PA
 *
 *

MECHANICAL OPTIONS

Gasketing

SUFFIX
 GSK*

ELECTRICAL OPTIONS

Emergency Battery Pack
 External Line Fusing (HLR/GLR)
 Motion Sensor

SUFFIX
 BP*
 ELF
 MS

BALLAST OPTIONS*

Electronic T5
 Electronic T5HO
 Electronic T8 Instant Start
 Electronic T8 Rapid Start
 Electronic T8HO

x = Number of Lamps per Ballast

SUFFIX

xE5
 xE5H
 xE8I
 xE8R
 xE8H

ACCESSORIES

Wire Guard - 11 Ga.
 Fixture Suspension System
 Ceiling Spacer
 6" Leg Height V-Hook
 Die Cast Hub For 3/4" Pipe (4' Fixture Only)

CAT.NO.
 WG11-EBY150
 *
 *
 V6
 HUB

*Refer to www.lalighting.com/resources for more information

SPECIFICATIONS

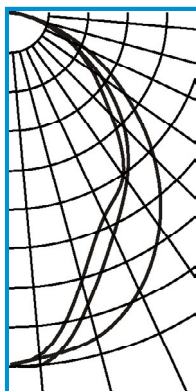
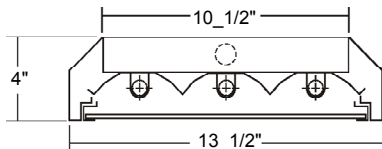
- TYPE**
- CONSTRUCTION** High bay luminaire for surface, pendant, or chain mounting. Must be spaced a minimum of 1 1/2" from ceiling when surface mounted. 22 gauge cold rolled steel housing with louvered vents on top for heat removal. Quarter turn rotary locking lamp-holders standard. (20 ga. C.R.S. and .040 aluminum housing available as specified)
- FINISH** Baked white polyester finish, minimum reflectance 86%. (Powder coated finish available.)
- REFLECTOR** Specular aluminum reflector standard, 95% reflectance. (White reflector available)
- DOOR FRAME** 20 ga. cold rolled steel door frame. T-hinges and positive spring loaded latches. Safety cables attached.
- GASKET** One way polyurethane gasketed standard. More options available.
- OPTICS** Clear acrylic lens standard. Extensive variety of lenses, diffusers and louvers available.
- WIRE GUARDS** 11 ga. powder coated.
- WIRING** 120v 60Hz., 277v 60Hz., UNV (universal voltage 120v thru 277v.) or as otherwise specified.
- LABELS** Multiple levels of switching available as specified. U.L. Listed. Suitable for damp locations.



PHOTOMETRIC DATA

EBY150-3-4M-SR-CA-E5H

TEST NO.=LA-T1367
 LAMP TYPE=F54T5HO
 NO. OF LAMP=3
 LUMENS PER LAMP=5000
 WATTS PER LAMP=54
 BALLAST FACTOR=1
 PHOTOMETRY TYPE=C



CANDLEPOWER

ANGLE	END	45	CROSS
0	5746	5746	5746
5	5665	5778	5613
15	5485	7919	4517
25	4993	3989	3644
35	4239	3312	3210
45	3302	2617	2310
55	2267	1794	1609
65	1331	1024	1040
75	517	442	435
85	78	60	46
90	0	2	1
95	0	0	0
105	0	0	0
115	0	0	0
125	0	0	0
135	0	0	0
145	0	0	0
155	0	0	0
165	0	0	0
175	0	0	0
180	0	0	0

ZONAL LUMEN SUMMARY

DEGREES	LUMENS	% LAMP	% FIXTURE
0-30	3874	25.8	33.7
0-40	6084	40.6	52.9
0-60	9858	65.7	85.8
0-90	11490	76.6	100.0
90-120	0	0.0	0
90-150	0	0.0	0
90-180	0	0.0	0
0-180	11491	76.6	100.0

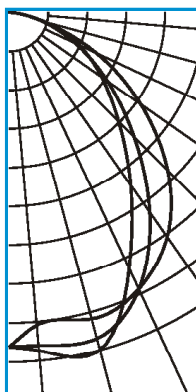
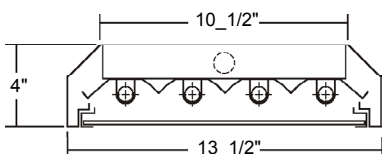
Lumen Output = 11491 lumens
 Luminaire Efficiency = 76.6%

SPACING CRITERION

ALONG	ACROSS
1.19	0.88

EBY150-4-4M-SR-CA-E5H

TEST NO.=LA-T0938
 LAMP TYPE=F54T5HO
 NO. OF LAMP=4
 LUMENS PER LAMP=5000
 WATTS PER LAMP=54
 BALLAST FACTOR=1
 PHOTOMETRY TYPE=C



CANDLEPOWER

ANGLE	END	45	CROSS
0	6427	6427	6427
5	6031	6423	6521
15	6101	6490	6715
25	5873	5879	5436
35	5279	4694	4059
45	4295	3385	2964
55	3077	2299	2165
65	1849	1403	1471
75	692	651	711
85	123	102	87
90	2	3	3
95	0	0	0
105	0	0	0
115	0	0	0
125	0	0	0
135	0	0	0
145	0	0	0
155	0	0	0
165	0	0	0
175	0	0	0
180	0	0	0

ZONAL LUMEN SUMMARY

DEGREES	LUMENS	% LAMP	% FIXTURE
0-30	5104	25.5	33.4
0-40	8045	40.2	52.6
0-60	12968	64.8	84.8
0-90	15289	76.4	100.0
90-120	1	0.0	0
90-150	1	0.0	0
90-180	1	0.0	0
0-180	15290	76.4	100.0

Lumen Output = 15290 lumens
 Luminaire Efficiency = 76.4%

SPACING CRITERION

ALONG	ACROSS
1.29	1.12

This space is intentionally left blank.

This space is intentionally left blank.

