

RPM-AC FINNED FRAME VARIABLE SPEED ALTERNATING CURRENT MOTOR FL3203Z

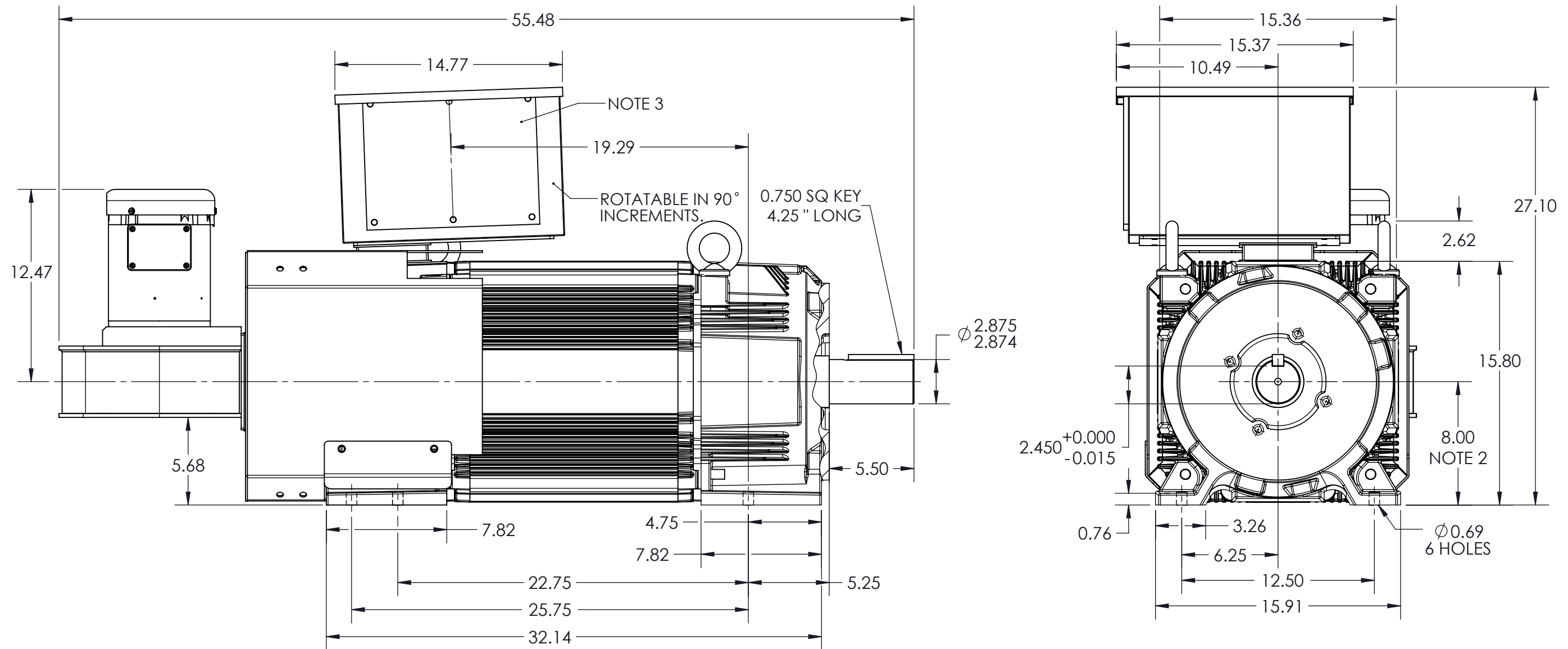
COOLING: BLOWER COOLED

ACCESSORIES: PROVISIONS FOR TACHOMETER MOUNTING ONLY WHEN SPECIFIED

ENCLOSURE: TOTALLY ENCLOSED

MOUNTING: FOOT

DRIVE METHOD: COUPLED OR BELTED



NOTES:

1. O.D.E. C-FACE & TACHOMETER MOUNTING. 1/2-13 TAP, 1.00 DEEP, ON A $\phi 7.25$ B.C. FACE RUNOUT AND ECCENTRICITY 0.004 MAX. T.I.R.
2. SHAFT HEIGHT WILL NOT BE EXCEEDED. SHIMS UP TO 0.06 INCHES IN THICKNESS ARE USUALLY REQUIRED FOR COUPLED OR GEARED MACHINES.
3. REMOVABLE COVER PLATE FOR CUSTOMER DRILLING.

- TERMINAL BOX MAY BE LOCATED F1, F2, OR F3 IF SPECIFIED.
- REFER TO 616779-55 FOR SPECIFIED TACHOMETER DIMENSIONS.

DIMENSIONS ARE IN INCHES

MOTOR WEIGHT: 1400 LBS. (MAY VARY 15% FOR NON-STANDARD RATINGS AND / OR ACCESSORIES.)

CUSTOMER IS RESPONSIBLE FOR DETERMINING THAT BALDOR'S PRODUCT WILL PERFORM SUITABLY IN THE INTENDED APPLICATION

REV. DESC: INITIAL RELEASE			
REV: -	VERSION: 00	REVISED: 11:17:03 12/17/2014	TDR: 000000860207
MODEL NO. 619689-001		REF: -	
BY: MGH TLC			

BALDOR

DIM SHEET,FL3203Z,RPM-AC,TEBC

619689-001

619689-001