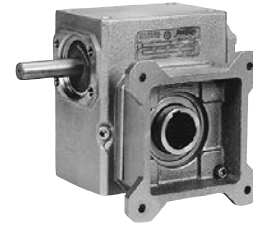
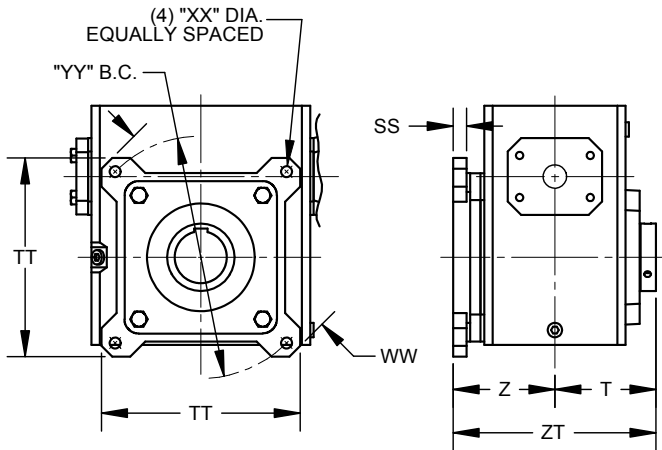


Hub City™ Worm Gear Drives

Accessories & Options

Cast F-Flange Mounting Kits



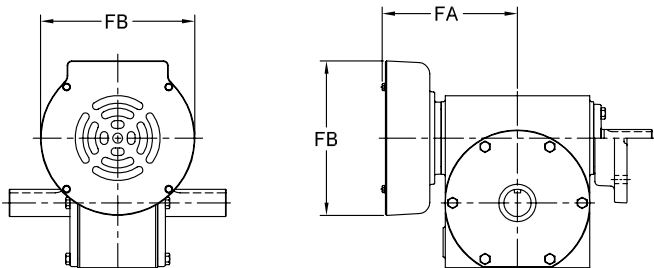
SERIES	CAST F-FLANGE KIT NO. *	KIT SHIPPING WT. LBS.	T	Z	ZT	SS	TT	WW	XX	YY
W150	0229-03201	1	2.71	2.94	5.65	0.38	4.50	5.92	.34	5.000
W240	0229-03202	3	3.00	3.73	6.73	0.44	6.28	8.40	.41	7.500
300	0229-03203	10	3.75	3.78	7.53	0.50	7.37	9.89	.41	9.000
W420	0229-03204	15	4.25	4.56	8.81	0.62	9.65	12.95	.56	11.500
GW60	0279-00635	38	5.75	7.26	13.01	0.75	14.00	18.00	.69	15.625
GW70	**	45	6.75	7.45	14.20	0.75	15.63	21.00	.78	18.380
GW80	**	50	7.25	8.34	15.59	0.75	17.88	24.00	1.03	21.000
GW100	**	55	9.25	9.07	18.32	1.00	21.19	29.00	1.03	25.000

* CAST F-FLANGE MUST BE FACTORY ASSEMBLED TO GEARDRIVE FOR **ALL SOLID OUTPUT SHAFT** REDUCERS.

CAST F-FLANGE CAN ONLY MOUNT TO COVER SIDE OF HOLLOW BORE OUTPUT REDUCERS.

** CAST F-FLANGE MUST BE FACTORY ASSEMBLED TO HOLLOW BORE GEARDRIVE. NOT AVAILABLE IN KIT FORM.

Fans



DIMENSIONS SHOWN ARE FOR REFERENCE ONLY.
 DOWNLOAD AVAILABLE CAD MODELS AT:
WWW.HUBCITYINC.COM

WHEN FAN KITS AND THERMAL BLOCK KITS
 ARE UTILIZED, SYNTHETIC LUBRICANT IS
 RECOMMENDED. SEE SECTION M.

SERIES	INPUT	FAN KIT PART NO.	FAN KIT SHIPPING WT.	FA	FB
450	SHAFT	0229-02891	11 LBS.	7-3/4	9-5/8
	QUILL	0229-02892			
520	SHAFT	0229-02896	11 LBS.	8-1/2	9-5/8
	QUILL	0229-02892			

Thermal Block Kits

SERIES	THERMAL BLOCK KIT PART NO.	THERMAL BLOCK KIT SHIPPING WT.	FC
450	0229-00033	4 LBS.	4-3/16
520	0229-00034	5 LBS.	4-5/16

