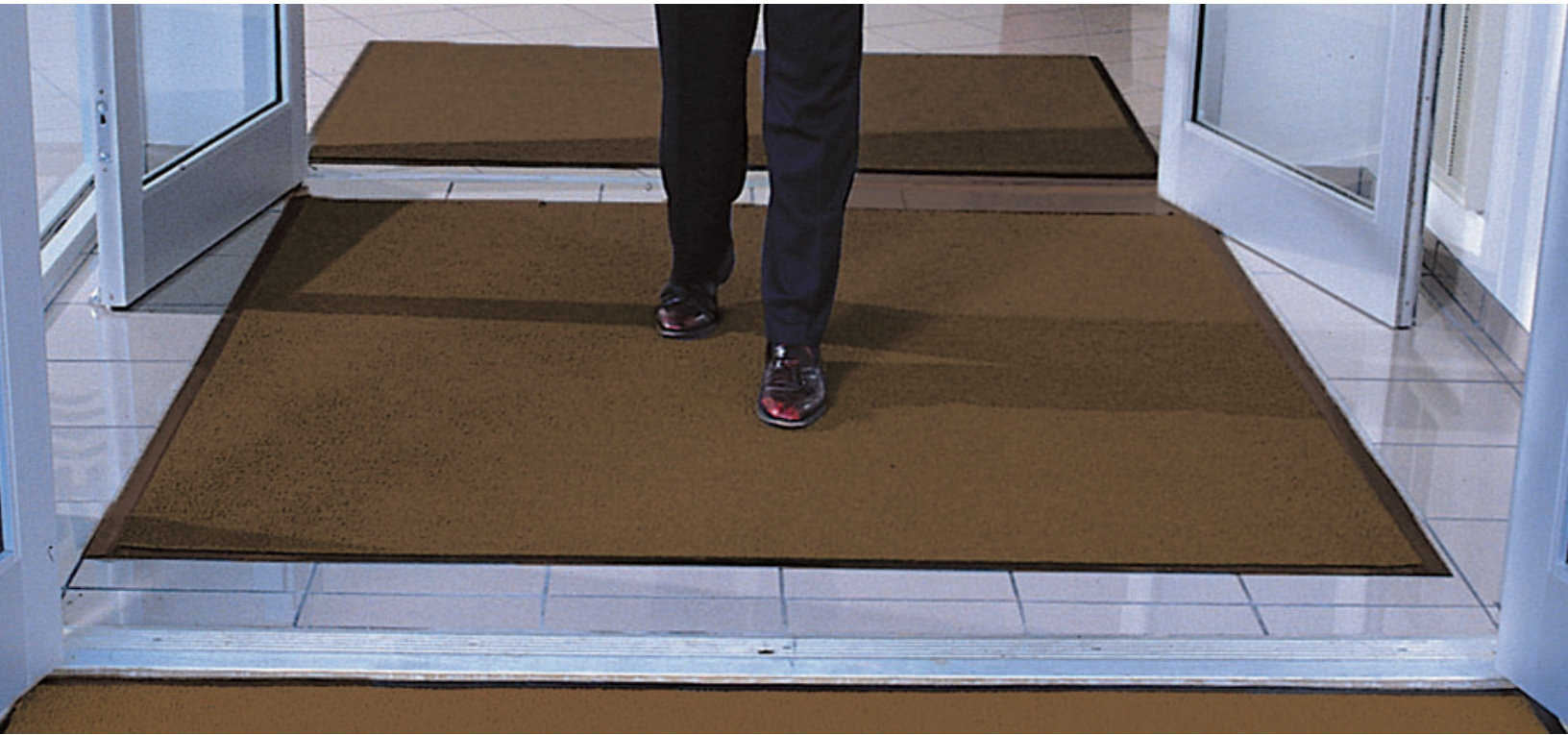




Justrite Safety Group

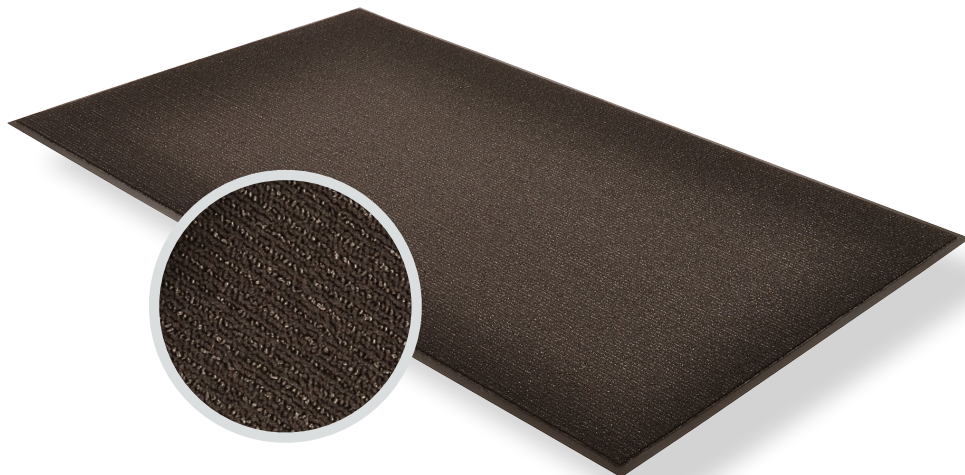
146 - ENCORE™
PRODUCT INFORMATION BROCHURE





For over 70 years, the name Notrax[®] has meant superior quality, service, and innovative products. Now this brand is a cornerstone of Justrite Safety Group, offering the widest selection of products to a variety of markets and applications including entrance mats, anti-fatigue/safety mats, and products designed specifically for use in professional food service environments. Notrax[®] offers a complete selection of floor matting options to meet any application requirement, quality expectation, and budget.

- **Track record of manufacturing high quality mats for over seventy years**
- **All products are manufactured in ISO certified facilities**
- **Notrax[®] offers anti-fatigue matting, entrance matting, safety matting, food service matting and specialty mats designed for a variety of industries**

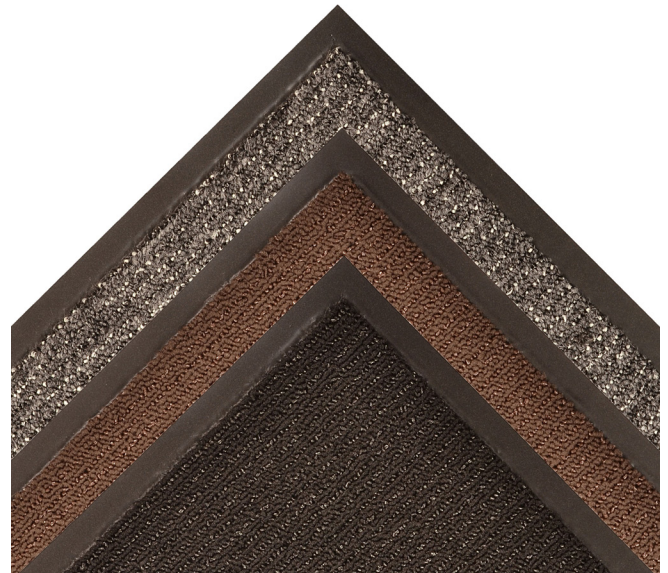


146 - ENCORE™ is an entrance mat that uses a combination of scraping and looped pile Decalon® drying yarns in a linear pattern, to facilitate the scraping function and begin the drying process. It can be used as a stand-alone mat, or as the second stage of the “Stages” coordinated entrance matting system. A heavy weight vinyl non-slip backing ensures minimum mat movement.

Material: Polypropylene Carpet W/Vinyl Backing

Features and Benefits:

- Scraper and drying mat
- Combination of Prelude™ scraping and looped pile Decalon®
- 22 ounces of tufted loop pile yarn per square yard
- Low profile to perform in narrow clearance doorways
- Vinyl backing ensures minimal buckling and mat movement
- Can be used as a second section (Scraping & Drying) of the “Stages” entrance matting system
- Recommended product as part of the GreenTRAX™ program for “Green Cleaning” environments




MODEL: 146

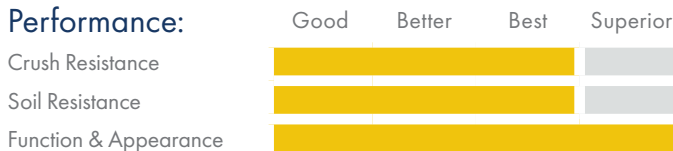
SPECIFICATIONS

APPLICATIONS

- Inside Foyer Area
- Entranceways
- Medium to Heavy Traffic

Stock Sizes	2'x3', 3'x4', 3'x5', 3'x6', 3'x10', 4'x6', 4'x8'		
Roll Sizes	3'x60', 4'x60', 6'x60'		
Thickness	3/8"		
Cut Lengths	3', 4', and 6' widths (up to 60' long)		
Colors	 Black	 Brown	 Grey

Performance:



Cut Lengths



Outdoor Use



Medium Traffic



Heavy Traffic

TESTING DATA

Test	Test Description	Results
ASTM D6540	Accelerated Soiling Method	Based on Visual Inspection 4.8 - Vacuum Rating 5.0 - Rating After Extraction
-	Water Retention	Weight Gain = 38.3% (0.5 gals./yd ²)
ASTM 5252-98a	Accelerated Wear - Sim Floor Machine	Appearance Rating @ 6,000 cycles - 3.5
ASTM D3884	Abrasion Resistance	@ 3,000 cycles Primary backing visible
CPSC FF 1-70 ASTM D-2859	Surface Flammability of Carpets and Rugs Ignition Characteristics - Finished Textile Floor Covering Material	Pass

*Testing performed by an independent test laboratory.

NOTRAX®

5655 West 73rd Street
Chicago, IL 60638

PHONE: (800) 621-2802

FAX: (800) 322-7105

EMAIL: saleschicago@checkers-safety.com

www.notrax.com



A PRODUCT OF:



Justrite Safety Group is the leading source of safety equipment for flammables and hazardous materials storage and handling, asset protection, environmental protection spill containment, absorbents, specialized chemical storage, cable management, safety showers and eye/face washes, matting, and vehicle safety equipment. Learn more at Justrite.com, Checkers-safety.com, and Notrax.com.