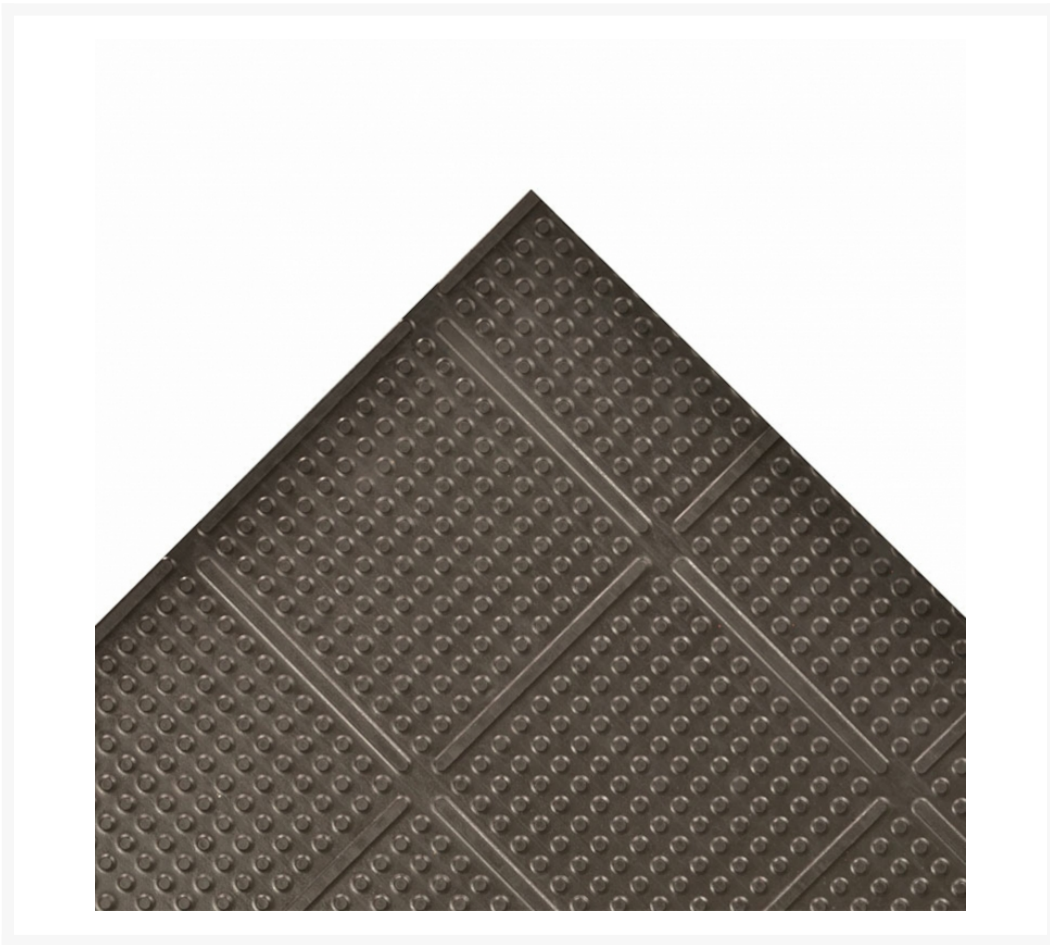


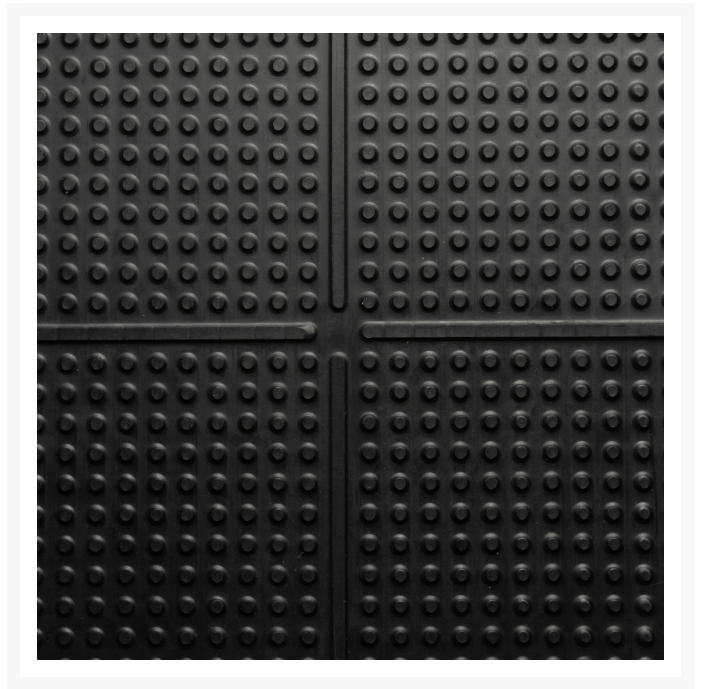
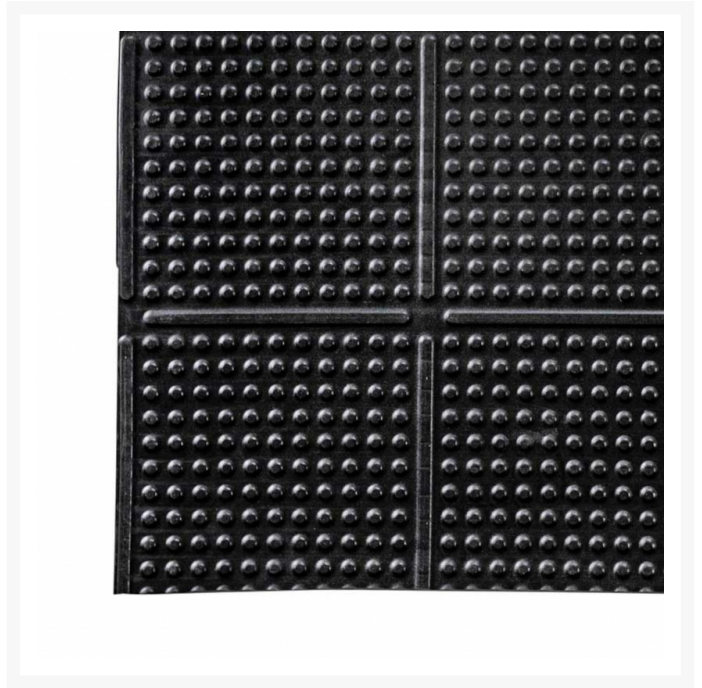
---

# Floor Protector Mat Niru<sup>®</sup> Knob-Top Runner<sup>™</sup> 758

## Product Images

---





## Short Description

---

- Made from a durable grease-proof 100% nitrile rubber compound
- Raised knob solid top surface that enhances traction
- Ribbed underside adds anti-fatigue value and channels liquid away from the mat
- Manufactured with Microstop™ anti-microbial rubber compound that inhibits growth of bacteria and fungi
- Low profile allows for easy on/off cart traffic

## Description

---

Niru® Knob-Top Runner™ is made from a 100% Nitrile rubber compound designed to withstand harsh chemicals, greases, oils, and animal fats while creating a slip resistant work surface. Its low profile allows carts to roll over the mat with ease. Niru® Knob-Top Runner™ is reversible further extending the service life of the mat making it the perfect product for industrial and food service applications where a continuous length of comfort and anti-slip matting is needed. Manufactured with Microstop™ anti-microbial rubber compound.

## Specifications

---

Model No	758
Available Colors	Black
Overall Thickness	1/4
Roll Sizes	2'x 60'; 3'x 60'; 4'x 60'
Custom Lengths	2', 3' and 4' widths (up to 60' long)
Standard sizes	2'x 3'; 3'x 4'
Group	Ergonomic, Anti-fatigue & Safety Matting
Environment	Wet/Dry and Oily Areas
Recommended Use	Food processing, professional kitchens, cooking lines, food preparation areas, bars and cleaning areas
Special Remarks	Provides traction, resistance to harsh chemicals, oils, and greases, and basic anti-fatigue support in a longer run. Reversible design further extends the service life of the mat.
Surface	Industrial Bubble Pattern
Material Specifications	NBR (nitrile) rubber
Process	Molding
Weight Lbs/sqft	1.5
Fire Rating US	Pass
Anti-Fatigue Rating	Good
Slip Resistance Rating	Best
Wear Resistance Rating	Better

## Product Options

---

Dimensions:	2'x 3'
	2'x 60'
	2'x Specify Length
	3'x 4'
	3'x 60'
	3'x Specify Length
	4'x 60'
	4'x Specify Length