



Hammond Power Solutions Inc.


TITLE: 3PH DISTRIBUTION TRANSFORMER
NAMEPLATE INFORMATION

3	21/07/16	PP	EDB UPDATE	DES: RMOVVA
2	20/03/17	PP	SEISMIC UPDATE	DATE: 15/11/27
NO.	DATE	BY	REVISION	SCALE: NTS

SHEET 1 OF 3

EDBSG3A0045DKOS

3.0 Jwen 2021/07/16 13:03



Hammond Power Solutions
Guelph, ONT Compton, CA

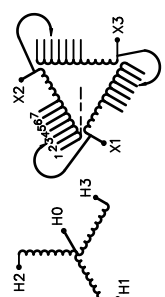
HPS Sentinel™ G
Energy Efficient Distribution Transformer
Transformateur de Distribution à Bon Rendement Énergétique

LR 3902
DRY TYPE DISTRIBUTION TRANSFORMER
E112313
ALSO VERIFIED IN ACCORDANCE TO ENERGY STANDARD C902-18 BY UNDERWRITERS LABORATORIES INC. @ 316

LISTED

Part No. **SG3A0045DKOS**

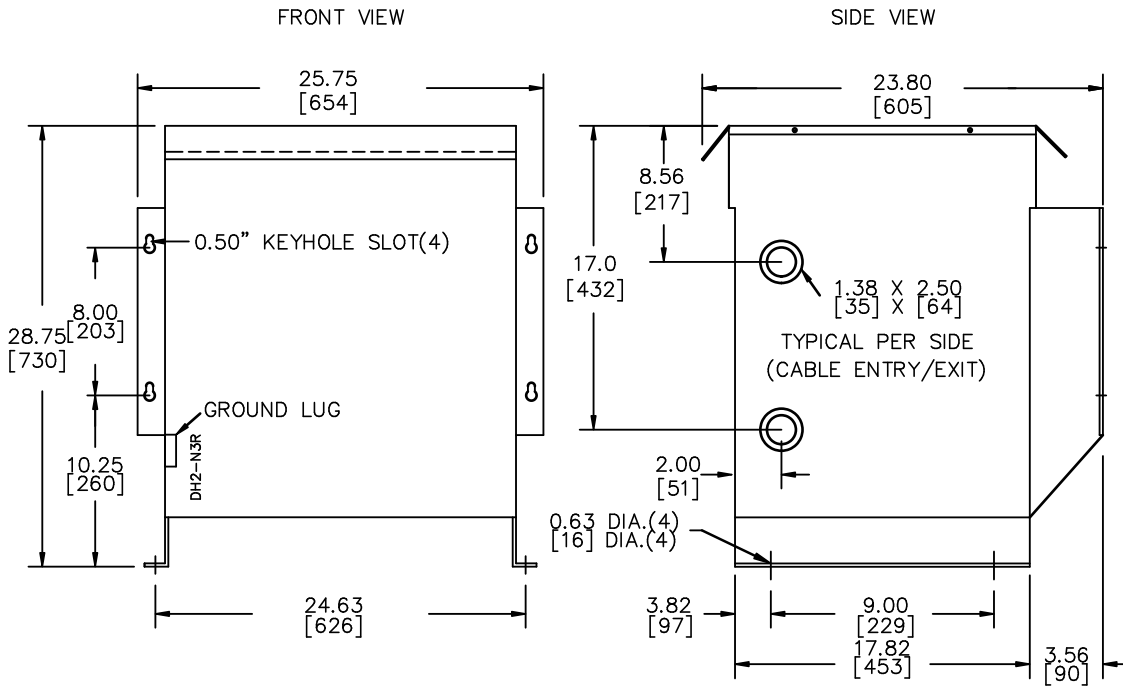
Cust. Ref. Ref. du Client	Serial No. No. de Serie	HV/HT	480Y/277V	VOLTS	CURRENT COURANT	% RATED VOLTAGE % TENSION NOMINALE	CONNECTION EACH PHASE CONNECTION PAR PHASE
3		BIL	10 kV	252	103.1	105	1
		Term Bornes	H0 H1 H2 H3	246	105.6	102.5	2
		LV/BT	240V	240	108.3	100	3
		BIL	10 kV	234	111	97.5	4
		Term Bornes	X1 X2 X3	228	114	95	5
		LV/BT	DOE 10 CFR PART 431:2016	222	117	92.5	6
		150 °C	CEE ACT SOR/2018-201	216	120	90	7
		220 °C					
		AL					
		60					
		4					
		3R					
		395/180					



SEISMIC QUALIFICATIONS:
AS FLOOR MOUNT ONLY
IBC 2018/ASCE 7-16
SDS<=2.0g Z/h=0 Ip=1.5

TRANSFORMER SUITABLE FOR STEP UP OPERATION ONLY

d000186hb



All Dimensions in inches[mm]

ENCLOSURE COLOR : ANSI 61 GREY – OUTDOOR

H.V.1. TERMINAL DETAIL

L.V.1. TERMINAL DETAIL

MECHANICAL TYPE LUGS INCLUDED
SUITABLE FOR #14-2 CU/AL
CONDUCTORS
1 CONDUCTOR PER PHASE

MECHANICAL TYPE LUGS INCLUDED
SUITABLE FOR 250MCM-6 CU/AL
CONDUCTORS
1 CONDUCTOR PER PHASE

CUSTOMER NOTES:

- HV1 TERMINATED AT BOTTOM FRONT
- LV1 TERMINATED AT TOP FRONT



TITLE: 3PH DISTRIBUTION TRANSFORMER

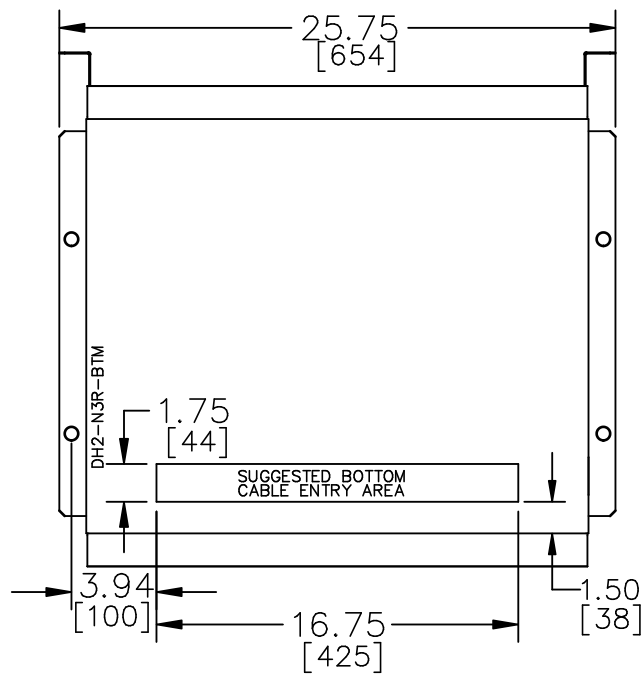
3	21/07/16	PP	EDB UPDATE	DES: RMOVVA
2	20/03/17	PP	SEISMIC UPDATE	DATE: 15/11/27
NO.	DATE	BY	REVISION	SCALE: NTS

SHEET 2 OF 3

EDBSC3A0045DKOS

3.0 (w)en 2021/07/16 13:03

ENCLOSURE BOTTOM VIEW



NOTE:
 WHEN BOTTOM CABLE ENTRY IS OPTED, THE SPACE USED FOR CONDUITS IN THE FRONT OF THE TRANSFORMER SHOULD NOT OBSTRUCT MORE THAN 50% OF THE FRONT AIR INTAKE AREA DEFINED BETWEEN THE BOTTOM PLATE AND THE SUPPORTING LEGS.
 SEE MANUAL FOR ADDITIONAL INFORMATION



TITLE: 3PH DISTRIBUTION TRANSFORMER
 ENCLOSURE BOTTOM VIEW

3	21/07/16	PP	EDB UPDATE	DES: RMOVVA
2	20/03/17	PP	SEISMIC UPDATE	DATE: 15/11/27
NO.	DATE	BY	REVISION	SCALE: NTS

SHEET 3 OF 3

EDBSC3A0045DKOS

3.0 jwen 2021/07/16 13:03