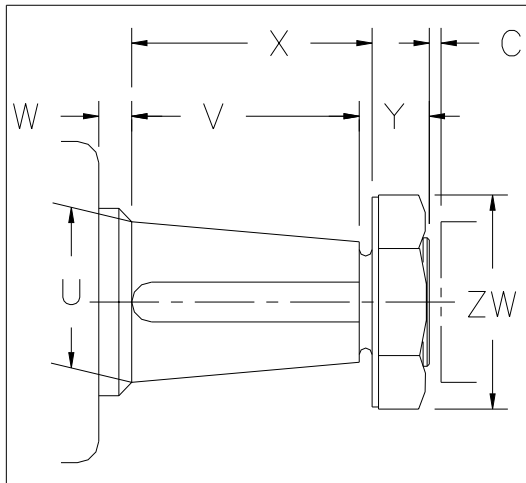


Type MM Coupling Size	For: AISE Mill Motor Frame Sizes	Rough Bored Composite Hub Dimensions & Part Numbers					Finish Bored Composite Hub For AISE Mill Motors Dimensions & Part Numbers								
		Dimensions				Part Number	Dimensions					Bore Dia.		Keyway	Part Number
		C _H	E _M	X _M	W _M		C	C _{FM}	E _{FM}	X _{FM}	W _{FM}	Large End	Small End		
1 1/2	802	9/16	3 9/16	1 5/16	2 1/4	1 1/2F MMHUB	1/8	1 1/16		13/16	2 3/16			1/2 X 1/8	1 1/2F MMHUB02
2	602	3/4	4 7/16	1 9/16	2 7/8	2F MMHUB	1/8	1 1/16	3	1 1/4	1 3/4	1.749	1.437	1/2 X 1/4	2F MMHUB02
2 1/2	AC1	13/16	4 9/16	2 3/32	2 15/32	2 1/2F MMHUB	3/16	1 1/8		1 25/32	1 7/32				2 1/2F MMHUB02
3	AC2	1 1/16	5 1/8	2 13/32	2 23/32	3F MMHUB	3/16	1 1/8		2 11/32	2 1/32				3F MMHUB02
2	803	3/4	4 7/16	1 9/16	2 7/8	2F MMHUB	1/8	1 1/8	3 1/2	1 3/16	2 5/16	1.999	1.634	1/2 X 1/4	2F MMHUB0304
2 1/2	804	13/16	4 9/16	2 3/32	2 15/32	2 1/2F MMHUB	3/16	1 3/16		1 23/32	1 25/32				2 1/2F MMHUB0304
3	603	1 1/16	5 1/8	2 13/32	2 23/32	3F MMHUB	3/16	1 3/16		2 9/32	1 7/32				3F MMHUB0304
3 1/2	604	1 1/8	5 3/4	2 15/16	2 13/16	3 1/2F MMHUB	1/4	1 1/4		2 13/16	1 11/16				3 1/2F MMHUB0304
2 1/2	806	13/16	4 9/16	2 3/32	2 15/32	2 1/2F MMHUB	3/16	1 5/16	4	1 19/32	2 13/32	2.499	2.082	1/2 X 1/4	2 1/2F MMHUB06
3	606	1 1/16	5 1/8	2 13/32	2 23/32	3F MMHUB	3/16	1 5/16		2 5/32	1 27/32				3F MMHUB06
3 1/2	AC8	1 1/8	5 3/4	2 15/16	2 13/16	3 1/2F MMHUB	1/4	1 3/8		2 11/16	1 5/16				3 1/2F MMHUB06
4	AC12	1 1/8	6 3/8	3 1/2	2 7/8	4F MMHUB	1/4	1 3/8		3 1/4	3/4				4F MMHUB06
3	806	1 1/16	5 1/8	2 13/32	2 23/32	3F MMHUB	3/16	1 7/16	4 1/2	2 1/32	2 15/32	2.999	2.530	3/4 X 1/4	3F MMHUB08
3 1/2	608	1 1/8	5 3/4	2 15/16	2 13/16	3 1/2F MMHUB	1/4	1 1/2		2 9/16	1 15/16				3 1/2F MMHUB08
4		1 1/8	6 3/8	3 1/2	2 7/8	4F MMHUB	1/4	1 1/2		3 1/8	1 3/8				4F MMHUB08
3	810	1 1/16	5 1/8	2 13/32	2 23/32	3F MMHUB	3/16	1 9/16		1 29/32	2 19/32				3F MMHUB10
3 1/2	610	1 1/8	5 3/4	2 15/16	2 13/16	3 1/2F MMHUB	1/4	1 5/8	4 1/2	2 7/16	2 1/16	3.249	2.780	3/4 X 1/4	3 1/2F MMHUB10
4	AC18	1 1/8	6 3/8	3 1/2	2 7/8	4F MMHUB	1/4	1 5/8		3	1 1/2				4F MMHUB10
4 1/2		1 5/8	6 7/16	3 19/32	2 27/32	4 1/2F MMHUB	5/16	1 11/16		3 17/32	3 1/32				4 1/2F MMHUB10
3 1/2	812	1 1/8	5 3/4	2 15/16	2 13/16	3 1/2F MMHUB	1/4	1 3/4		2 5/16	2 11/16				3 1/2F MMHUB12
4	612	1 1/8	6 3/8	3 1/2	2 7/8	4F MMHUB	1/4	1 3/4	5	2 7/8	2 1/8	3.623	3.102	3/4 X 1/4	4F MMHUB12
4 1/2	AC25	1 5/8	6 7/16	3 19/32	2 27/32	4 1/2F MMHUB	5/16	1 13/16		3 13/32	1 19/32				4 1/2F MMHUB12
5	AC30	1 5/8	6	4 5/32	1 27/32	5F MMHUB	5/16	1 13/16		3 31/32	1 1/32				5F MMHUB12
4	814	1 1/8	6 3/8	3 1/2	2 7/8	4F MMHUB	1/4	1 7/8		2 3/4	2 1/4				4F MMHUB14
4 1/2	614	1 5/8	6 7/16	3 19/32	2 27/32	4 1/2F MMHUB	5/16	1 15/16	5	3 9/32	1 23/32	4.248	3.727	1 X 3/8	4 1/2F MMHUB14
5	AC40	1 5/8	6	4 5/32	1 27/32	5F MMHUB	5/16	1 15/16		3 27/32	1 5/32				5F MMHUB14
4 1/2	816	1 5/8	6 7/16	3 19/32	2 27/32	4 1/2F MMHUB	5/16	2 1/16		4 5/32	2 11/32				4 1/2F MMHUB16
5	616	1 5/8	6	4 5/32	1 27/32	5F MMHUB	5/16	2 1/16		3 23/32	1 25/32				5F MMHUB16
5 1/2		1 5/8	8 5/16	4 23/32	3 19/32	5 1/2F MMHUB	5/16	2 1/16	5 1/2	3 5/8	1 7/32	4.623	4.050	1 1/4 X 3/8	5 1/2F MMHUB16
4 1/2	818	1 5/8	6 7/16	3 19/32	2 27/32	4 1/2F MMHUB	5/16	1 5/8	6	3 19/32	2 13/32	4.998	4.373	1 1/4 X 1/2	4 1/2F MMHUB18
5	618	1 5/8	6	4 5/32	1 27/32	5F MMHUB	5/16	1 5/8		4 5/32	1 27/32				5F MMHUB18
5 1/2		1 5/8	8 5/16	4 23/32	3 19/32	5 1/2F MMHUB	5/16	1 5/8		4 23/32	1 9/32				5 1/2F MMHUB18
5 1/2	620	1 5/8	8 5/16	4 23/32	3 19/32	5 1/2F MMHUB	5/16	2 1/16		4 9/32	2 15/32				5 1/2F MMHUB20
6		2 1/16	9 7/8	4 27/32	5 1/32	6F MMHUB	5/16	2 1/16	6 3/4	4 27/32	1 29/32	5.873	5.170	1 1/2 X 3/4	6F MMHUB20
6	622	2 1/16	9 7/8	4 27/32	5 1/32	6F MMHUB	5/16	2 11/16		4 7/32	3 1/32				6F MMHUB22
7		2 3/4	9 1/4	5 5/16	3 15/16	7F MMHUB	3/8	2 3/4		5 5/16	1 15/16				7F MMHUB22
6	624	2 1/16	9 7/8	4 27/32	5 1/32	6F MMHUB	5/16	2 11/16		4 7/32	5 1/32				6F MMHUB24
7		2 3/4	9 1/4	5 5/16	3 15/16	7F MMHUB	3/8	2 3/4	5 5/16	3 15/16	7F MMHUB24	6.997	6.034	1 1/2 X 1/2	7F MMHUB24

*ALL KEYWAYS SHOWN ARE PARALLEL TO THE TAPER. TAPER IS 1 1/4 INCH PER FOOT ON DIAMETER.



IV. TAPERED BORES For Tapered Shafts, with or without locknut, determine applicable AISE Mill Motor frame or give data below:

1. U Major diameter.
2. V Length of tapered portion of shaft.
3. X Length to face of lockwasher.
4. Y Length of threaded projection.
5. ZW Locknut diameter across corners.
6. W Clearance to bearing housing.
7. Taper (inches on diameter per foot of length).
8. Keyway width and depth.
9. Whether keyway is parallel to shaft or to taper.
10. C Shaft separation if machines are in place.