

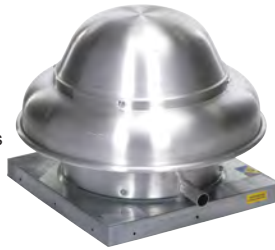
Centrifugal Direct Drive Exhaust Fans

MODEL CDD

1 Year Warranty

FEATURES

- Durable and Quiet at Higher Static Pressures
- Suitable for Roof or Wall Mount
- 115V, 1 Phase, 1 Speed, Open Drip Proof Motors
- Bird Screen Standard
- Emergency Disconnect Switch Standard
- Non-Overloading, Backward Inclined Wheel
- Variable Speed Control Standard



"Airmaster Fan certifies that Model CDD shown herein is (or are) licensed to bear the AMCA Seal. The ratings shown are based on tests and procedures performed in accordance with AMCA Publication 211 and AMCA Publication 311 and comply with the requirements of the AMCA Certified Ratings Program."

PERFORMANCE

Catalog No.	HP	RPM	Max Sones	Capacity (CFM) at "S.P.												
				0"	1/8"	1/4"	3/8"	1/2"	5/8"	3/4"	1"					
CDD100-2	1/10	1600	7.4	510	470	425	370	300	175							
CDD120-2	.18	1600	12.2	945	880	800	725	650	550							
CDD300B-2	1/6	1625	13.4	1410	1340	1265	1190	1110	1040	950	790					
CDD330B-2	1/3	1600	14.2	1310	1250	1190	1110	1030	950	860	680					
CDD550B-2	1/2	1600	17.4	2400	2300	2210	2120	2050	1910	1850	1600					

Speed Control allows for CFM range to 50% of CMF stated

* Performance shown is for installation type A: Free inlet, Free outlet. Performance ratings do not include the effects of appurtenances in the airstream. Power rating (BHP) does not include transmission losses. The sound ratings shown are loudness values in fan sones at 5 ft (1.5 m) in a hemispherical free field calculated per AMCA Standard 301. Values shown are for Installation Type A: Free inlet hemispherical sone levels.

115V Models

EDP No.	Catalog No.	Wheel Dia.	Ship Wt.	List Price
32446	CDD100-2	9"	30	\$819
32447	CDD120-2	10½"	35	\$930
32727	CDD300B-2	10¾"	45	\$1,205
32449	CDD330B-2	11¾"	45	\$1,244
32451	CDD550B-2	12"	50	\$1,499

8" & 12" Curb

EDP No.	Catalog No.	Curb Size	Used With CDD Models	List Price
31100	PACA17.75-8	8"	CDD100-2, CDD120-2	\$206
31101	PACA17.75-12	12"	CDD100-2, CDD120-2	\$223
31102	PACA20-8	8"	CDD300B-2, CDD330B-2, CDD550B-2	\$229
31103	PACA20-12	12"	CDD300B-2, CDD330B-2, CDD550B-2	\$248

Gravity Damper & Motor Kit

EDP No.	Catalog No.	Used With CDD Models	Ship Wt.	List Price
32452	BD14.5A	CDD100-2, CDD120-2	3	\$74
32453	BD16.75A	CDD300B-2, CDD330B-2, CDD550B-2	4	\$83
94283	Motor Kit	CDD100-2, CDD120-2, CDD300B-2, CDD330B-2, CDD550B-2	5	\$259

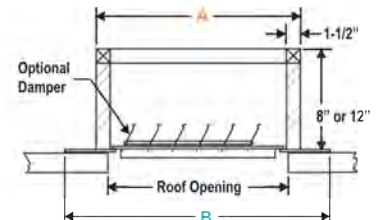
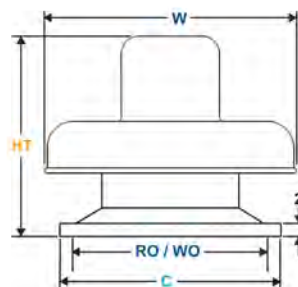
Special custom order product. Once in production, non-cancellable, nonreturnable under any circumstance.

FAN DIMENSIONS

Catalog No.	Height	W	B	C	Wall or Roof Opening
CDD100	14-1/2"	20-3/4"	2"	19"	13"
CDD120	16-1/4"	23-3/4"	2"	19"	13"
CDD300B-2	19-1/8"	26-1/4"	2"	21"	16"
CDD330B-2	19-1/8"	26-1/4"	2"	21"	16"
CDD550B-2	21-3/4"	29-3/4"	2"	21"	16"

CURB DIMENSIONS

Curb Cat. No.	Ship Weight	A Sq.	B Sq.	Roof Opening	Damper Cat. No.
PACA17.75	17	17-3/4"	23-3/4"	13"	BD14.5 A
PACA20	22	20"	24"	16"	BD16.75 A



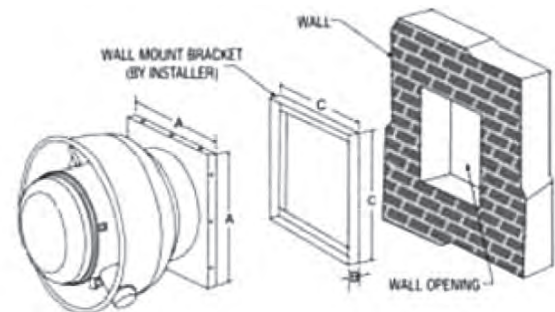
115V Models

Accessories

EDP No.	Catalog No.	Description	List Price
62000	Curb Hinge	Curb Hinge	\$177

CDD WALL MOUNTING DETAILS

MODEL	A	C	WALL OPENING
CDD100	19	18-1/2"	13
CDD120	19	18-1/2"	13
CDD300B	21	20-1/2"	16
CDD330B	21	20-1/2"	16
CDD500B	21	20-1/2"	16



NOTES:

Pitched and Peaked Curbs available.
For Pitched Roof Curb price, multiply flat roof curb price by 1.67.
For Peaked Roof Curb price, multiply flat roof curb price by 2.22.
 Please specify Pitched or Peaked when ordering.
 Metal roofs, consult factory for sizing and pricing.

WALL MOUNT BRACKETS AVAILABLE - CONTACT FACTORY