

## Material Follower Plate and Adapter

### Description

#### Overview

Follower plate model 324610 is used with single-post hoist models 2742-4 and 2743-4. Plate model 327242 is used on hoist model 2742-4 only.

Each material follower requires an adapter to enable pump attachment. Which adapter used is dependent on the model of pump chosen.

#### Follower Plate

Each model follower plate is designed to operate with different size containers. See **Figure 1**.

#### Models 324610 and 327242

Both model followers consists of:

- a flexible wiper
- a manually-operated air vent
- a port for material return-line connection
- hardware for adapter attachment

Model 327242 also includes a:

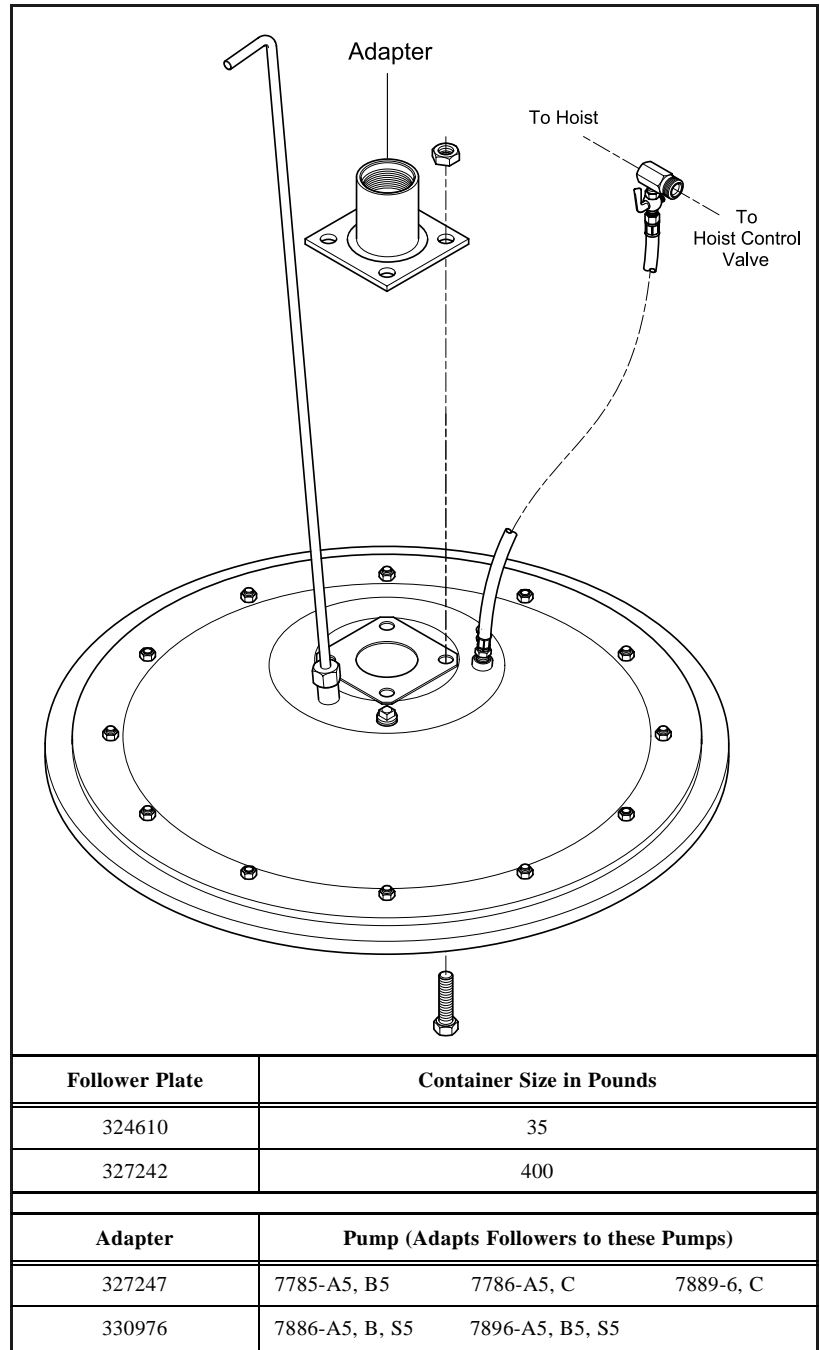
- port (with check valve) for air-assist follower release
- hose assembly
- shut-off valve

#### Adapter

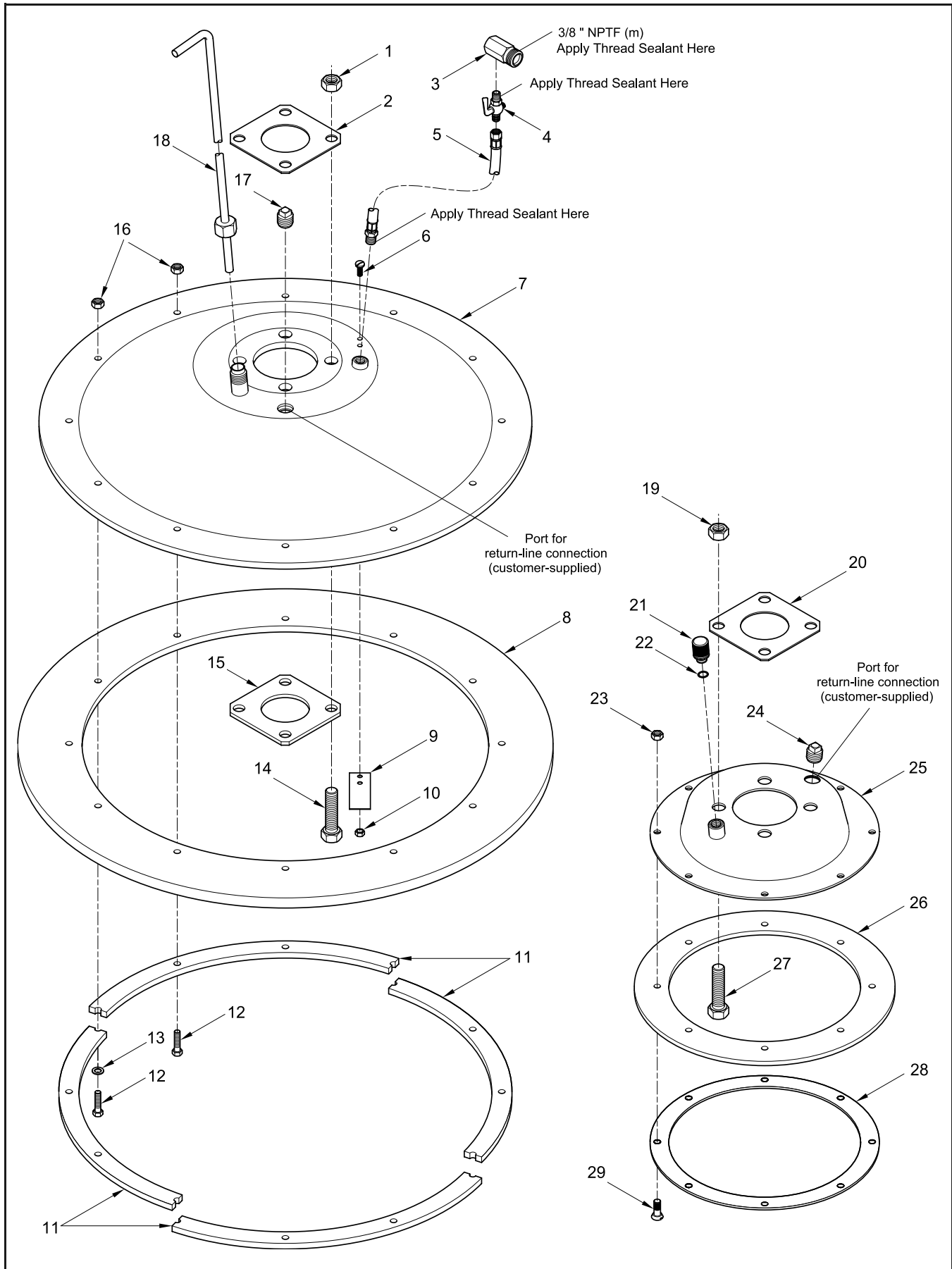
Both adapter models are designed to bolt to either follower plate. The adapter model chosen is dependent on the model of the pump. See **Figure 1**.

#### Models 327247 and 330976

The difference between these adapters is illustrated in **Figure 3**.



**Figure 1** Material Follower Plate and Adapter  
Follower Plate Model 327242 and Adapter Model 330976 Shown



**Figure 2** Material Follower Plate Model 327242 (for 400-pound Container) and 324610 (for 35-pound Container)

Item No.	Part No.	Description	Qty	Model	Numeric Order Part # (Item #)
1		Nut, Elastic Stop, 9/16 " -12	4	327242	<i>14534</i> (13)
2	327245	Gasket	1		<i>45370</i> (14)
3		Adapter	1		<i>45496</i> (17)
4	324698	Valve, Shut-Off	1		<i>77736</i> (12)
5		Hose, 3-1/2 ' Long	1		<i>77772</i> (6)
6		Screw, 10-32 x 3/8 "	2		<i>171055</i> (16)
7		Plate Assembly, Follower	1		<i>315755</i> (18)
8	324697	Wiper (Rubber)	1		<i>323657</i> (1)
9	324685	Valve, Flat	1		<i>324685</i> (9)
10		Nut, Elastic Stop, 10-32	2		<i>324694</i> (3)
11		Retainer	4		<i>324697</i> (8)
12		Screw, 1/4 " -20 x 7/8 "	12		<i>324698</i> (4)
13		Washer, 5/16 "	4		<i>324699</i> (11)
14		Screw, 9/16 " -12 x 1-1/4 "	4		<i>327243</i> (7)
15		Plate, Support	1		<i>327245</i> (2)
16		Nut, Elastic Stop, 1/4 " -20	12		<i>327246</i> (15)
17		Plug, 1/2 " NPT (m)	1		<i>337482-B1</i> (5)
18	315755	Nut and Handle Assembly	1		<i>401514</i> (10)
<b>Legend:</b> Part numbers left blank (or in <i>italics</i> ) are not available separately					

Item No.	Part No.	Description	Qty	Model	Notes	Numeric Order Part # (Item #)
19		Nut, Elastic Stop, 9/16 " -12	4	324610		<i>11285</i> (29)
20	327245	Gasket	1		<i>45370</i> (27)	
21		Plug, Vent	1		<i>45496</i> (24)	
22	X171001-8	O-Ring, 3/8 " ID x 9/16 " OD	1		Pack of Ten (10)	X171001-8 (22)
23		Nut, Elastic Stop, 1/4 " -20	8		<i>171055</i> (23)	
24		Plug, 1/2 " NPT (m)	1		<i>319263</i> (26)	
25		Plate Assembly, Follower	1		<i>319267</i> (28)	
26	319263	Wiper (Rubber)	1		<i>319268</i> (21)	
27		Screw, 9/16 " -12 x 1-1/4 "	4		<i>323657</i> (19)	
28		Ring, Follower	1		<i>324620</i> (25)	
29		Screw, 1/4 " -20 x 3/4 "	8		<i>327245</i> (20)	
<b>Legend:</b> Part numbers left blank (or in <i>italics</i> ) are not available separately						

# Installation

**NOTE:** Refer to **Figures 2 and 3** for component identification on the installation procedures.

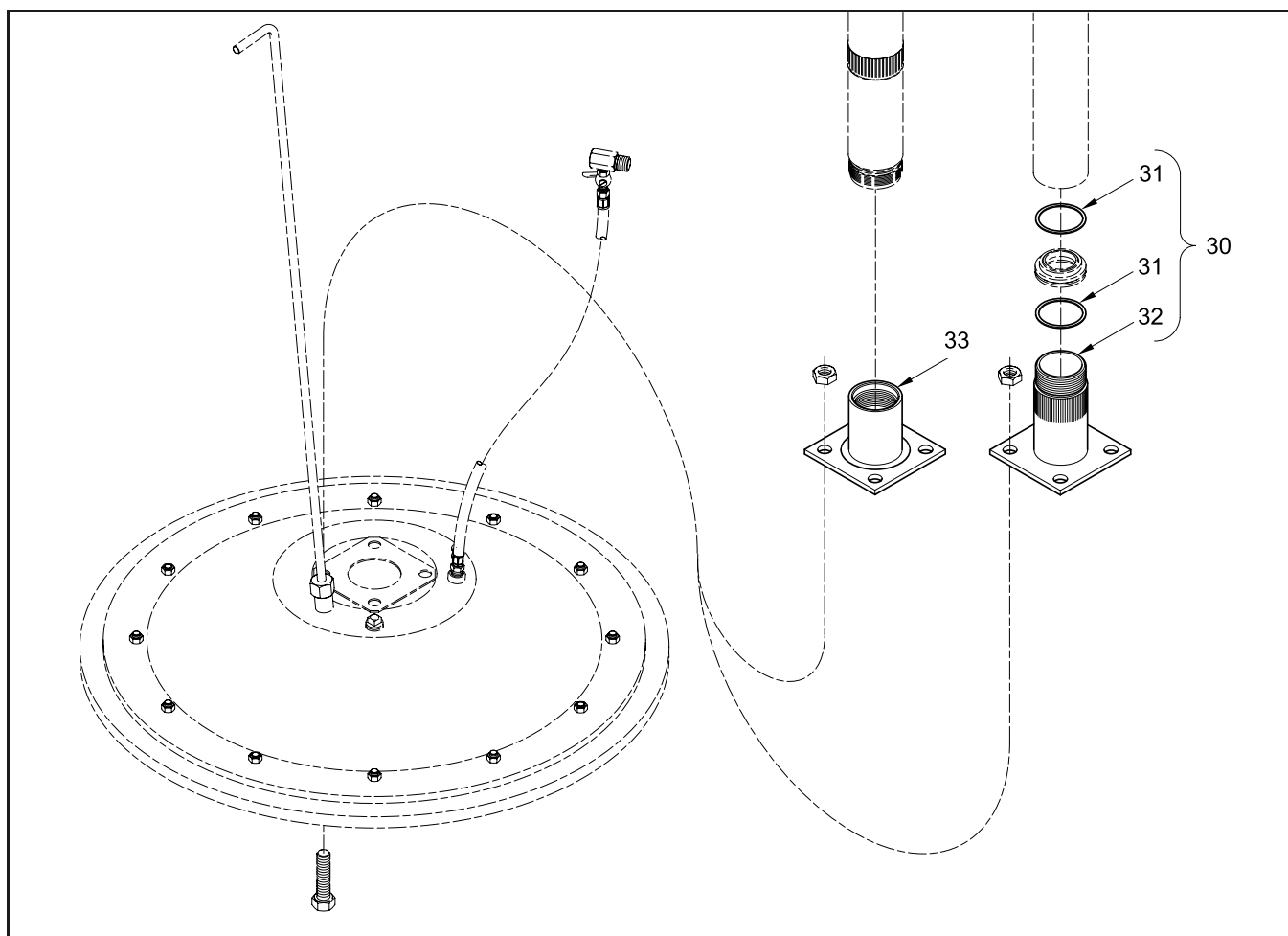
## Adapter Attachment to Pump

*IMPORTANT:* The adapter used is dependent on the model of the pump. See **Figure 1**.

### Adapter Model 327247

1. Remove the original primer body from the pump.
2. Remove the nut that secures the primer plate to the primer rod.

3. Remove the valve seat from the pump tube and discard both aluminum gaskets.
4. Install and seat Gasket (31), the valve seat, and additional Gasket (31) into the pump tube.
  - See **Figure 3**.
5. Secure the plate to the primer rod with the nut.
  - Tighten the nut securely.
6. Screw Adapter (32) [with Loctite 222] into the pump tube.
  - Tighten the pump tube securely.



Item No.	Part No.	Description	Qty	Notes	Numeric Order Part # (Item #)
30	327247	Adapter Assembly	1		131402 (31)
31	131402	Gasket, 1-1/2 " ID (Aluminum)	2	Included w/ 327247	327247 (30)
32	332469	Adapter, 1-3/4 " -20	1		330976 (33)
33	330976	Adapter, 2" -16	1		332469 (32)

**Figure 3** Adapter Model 327247 and 330976

**Adapter Model 330976**

7. Remove the original valve body from the pump.
8. Screw Adapter (33) onto the pump tube [with Loctite 222].
  - Tighten the pump tube securely.

**Pump Assembly to Follower Plate****Step for Model 327242 Only**

9. Position Support Plate (15) to the underneath surface of Follower Plate Assembly (7).
10. Position Gasket (2 or 20) between the Adapter and the Follower Plate Assembly.
11. Secure with Screws (14 or 27) and Nuts (1 or 19).
  - Install the Screws from below the Follower Plate Assembly.
12. Tighten the Nuts securely in a crisscross pattern.

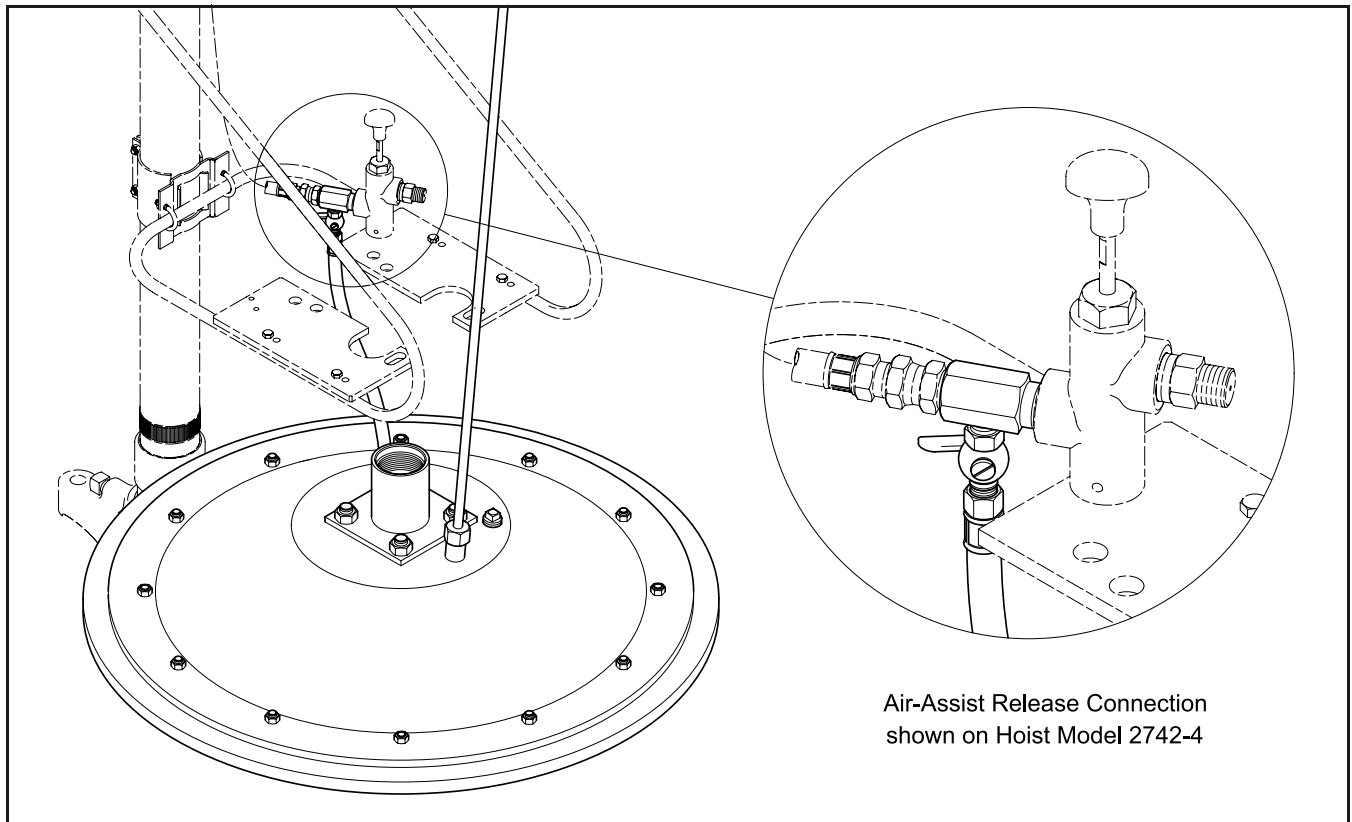
**Air-Assist Release**

13. Screw Hose (5) [w/ thread sealant] into the follower.
  - Tighten the Hose securely.
14. Screw Shut-Off Valve (4) [w/ thread sealant] into the side of Adapter (3).
  - Tighten the connection securely.
15. Screw the Adapter [w/ thread sealant] into the "OUT" port of the hoist's control valve.
  - Make sure the Shut-Off Valve points downward.
  - See **Figure 4**.
16. Screw the opposite end of the Hose to the Shut-Off Valve.
  - Tighten the Hose securely.

**NOTE:** The supply line to the Shut-Off Valve should be free of lubrication.

**Operation**

Refer to **SER 2741-4** for details.



Air-Assist Release Connection  
shown on Hoist Model 2742-4

**Figure 4** Air-Assist Release Connection to Hoist Control Valve

**Changes Since Last Printing**

Initial Release

