

## Screw Conveyor Shaft Mount Speed Reducers

### SCXT SCREW CONVEYOR DRIVE OPTIONAL DRIVE SHAFTS

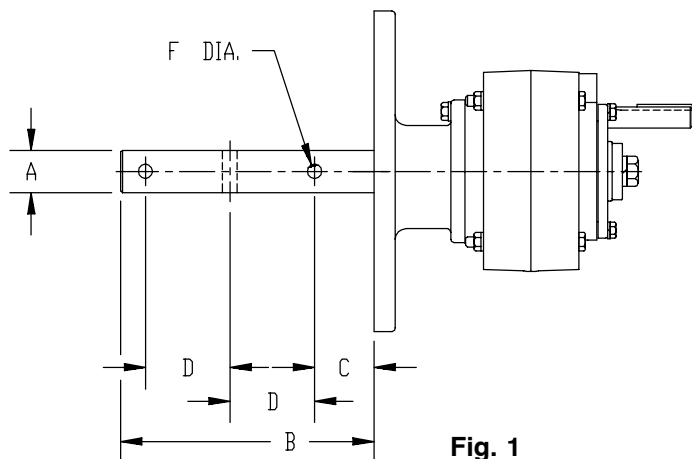


Fig. 1

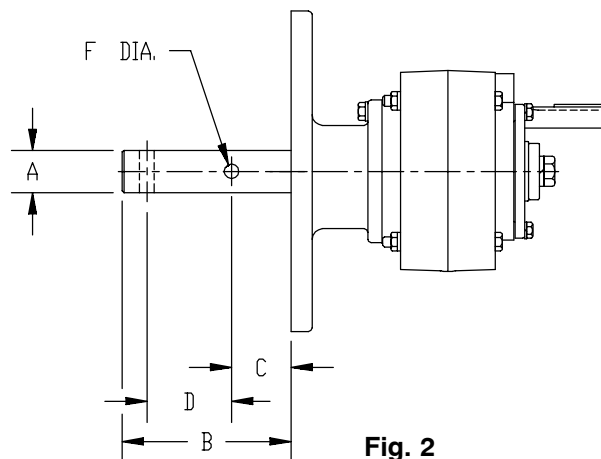


Fig. 2

#### SCXT1 Optional Drive Shafts

Description	Drive Shaft	Screw Dia.	Part No.	Figure	A	B	C	D	F	Weight
SCXT1 Stainless Steel *	C1 x 1-1/2	6"-9"	351147	2	1.50	6.00	2.13	3.00	.52	7.2
	C1 x 2	9"-12"	351148	2	2.00	6.00	2.13	3.00	.64	9.1
	C1 x 2-7/16	12"-14"	351149	2	2.44	6.69	2.75	3.00	.64	12.5
	C1 x 3	12"-20"	351150	2	3.00	6.88	2.88	3.00	.77	17.4
SCXT1 3-Hole Drive Shafts	C1 x 1-1/2	6"-9"	351300	1	1.50	9.00	2.13	3.00	.52	8.7
	C1 x 2	9"-12"	351301	1	2.00	9.00	2.13	3.00	.64	11.8
	C1 x 2-7/16	12"-14"	351302	1	2.44	9.69	2.75	3.00	.64	16.4
	C1 x 3	12"-20"	351303	1	3.00	9.88	2.88	3.00	.77	23.4
SCXT1 Stainless Steel *	C1 x 1-1/2	6"-9"	351025	1	1.50	9.00	2.13	3.00	.52	8.7
	C1 x 2	9"-12"	351026	1	2.00	9.00	2.13	3.00	.64	11.8
	C1 x 2-7/16	12"-14"	351027	1	2.44	9.69	2.75	3.00	.64	16.4
	C1 x 3	12"-20"	351028	1	3.00	9.88	2.88	3.00	.77	23.4
SCXT1 Short Series Drive Shafts	C1S x 1-1/2	6"-9"	351124	2	1.50	5.13	1.25	3.00	.52	6.7
	C1S x 2	9"-12"	351125	2	2.00	5.13	1.25	3.00	.64	8.3
	C1S x 2-7/16	12"-14"	351126	2	2.44	5.25	1.31	3.00	.64	10.6
	C1S x 3	12"-20"	351127	2	3.00	5.44	1.44	3.00	.77	14.4

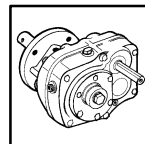
#### SCXT2 Optional Drive Shafts

Description	Drive Shaft	Screw Dia.	Part No.	Figure	A	B	C	D	F	Weight
SCXT2 Stainless Steel *	C2 x 1-1/2	6"-9"	352160	2	1.50	6.00	2.13	3.00	.52	11.4
	C2 x 2	9"-12"	352161	2	2.00	6.00	2.13	3.00	.64	13.8
	C2 x 2-7/16	12"-14"	352162	2	2.44	6.69	2.75	3.00	.64	17.3
	C2 x 3	12"-20"	352163	2	3.00	6.88	2.88	3.00	.77	19
SCXT2 3-Hole Drive Shafts	C2 x 1-1/2	6"-9"	351305	1	1.50	9.00	2.13	3.00	.52	12.9
	C2 x 2	9"-12"	351306	1	2.00	9.00	2.13	3.00	.64	16.5
	C2 x 2-7/16	12"-14"	351307	1	2.44	9.69	2.75	3.00	.64	21.2
	C2 x 3	12"-20"	351308	1	3.00	9.88	2.88	3.00	.77	25
SCXT2 Stainless Steel *	C2 x 1-1/2	6"-9"	352186	1	1.50	9.00	2.13	3.00	.52	12.9
	C2 x 2	9"-12"	352187	1	2.00	9.00	2.13	3.00	.64	16.5
	C2 x 2-7/16	12"-14"	352188	1	2.44	9.69	2.75	3.00	.64	21.2
	C2 x 3	12"-20"	352189	1	3.00	9.88	2.88	3.00	.77	25
SCXT2 Short Series Drive Shafts	C2S x 1-1/2	6"-9"	352124	2	1.50	5.13	1.25	3.00	.52	11
	C2S x 2	9"-12"	352125	2	2.00	5.13	1.25	3.00	.64	13
	C2S x 2-7/16	12"-14"	352126	2	2.44	5.25	1.31	3.00	.64	15.4
	C2S x 3	12"-20"	352127	2	3.00	5.44	1.44	3.00	.77	19.1

\* Supplied as #316 stainless steel.

SELECTION PAGES G1-81-G1-89	DIMENSIONS PAGES G1-90-G1-117	RELATED PRODUCTS PAGES G1-144-G1-184	ENGINEERING/TECHNICAL PAGES G1-187-G1-201
--------------------------------	----------------------------------	---	--

# MODIFICATIONS/ ACCESSORIES



## Screw Conveyor Shaft Mount Speed Reducers

### SCXT3A Optional Drive Shafts

Description	Drive Shaft	Screw Dia.	Part No.	Figure	A	B	C	D	F	Weight
SCXT3A Stainless Steel * Drive Shafts	C3A x 1-1/2	9"	243446	2	1.50	6.00	2.13	3.00	.52	15
	C3A x 2	9"-12"	243447	2	2.00	6.00	2.13	3.00	.64	16
	C3A x 2-7/16	12"-14"	243448	2	2.44	6.69	2.75	3.00	.64	19.5
	C3A x 3	12"-20"	243449	2	3.00	6.88	2.88	3.00	.77	26
SCXT3A 3-Hole Drive Shafts	C3A x 1-1/2	9"	243016	1	1.50	9.00	2.13	3.00	.52	16.5
	C3A x 2	9"-12"	243017	1	2.00	9.00	2.13	3.00	.64	18.7
	C3A x 2-7/16	12"-14"	243018	1	2.44	9.69	2.75	3.00	.64	23.4
	C3A x 3	12"-20"	243019	1	3.00	9.88	2.88	3.00	.77	32
SCXT3A Stainless Steel * 3-Hole Drive Shafts	C3A x 1-1/2	9"	353180	1	1.50	9.00	2.13	3.00	.52	16.5
	C3A x 2	9"-12"	353181	1	2.00	9.00	2.13	3.00	.64	18.7
	C3A x 2-7/16	12"-14"	353182	1	2.44	9.69	2.75	3.00	.64	23.4
	C3A x 3	12"-20"	353183	1	3.00	9.88	2.88	3.00	.77	32
SCXT3A Short Series Drive Shafts	C3AS x 1-1/2	9"	243566	2	1.50	5.13	1.25	3.00	.52	13.1
	C3AS x 2	9"-12"	243567	2	2.00	5.13	1.25	3.00	.64	15.1
	C3AS x 2-7/16	12"-14"	243568	2	2.44	5.25	1.31	3.00	.64	17.6
	C3AS x 3	12"-20"	243569	2	3.00	5.44	1.44	3.00	.77	23

### SCXT4A Optional Drive Shafts

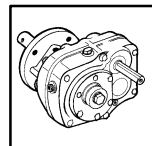
Description	Drive Shaft	Screw Dia.	Part No.	Figure	A	B	C	D	F	Weight
SCXT4A Stainless Steel * Drive Shafts	C4A x 1-1/2	9"	244680	2	1.50	6.00	2.13	3.00	.52	19
	C4A x 2	9"-12"	244681	2	2.00	6.00	2.13	3.00	.64	20.8
	C4A x 2-7/16	12"-14"	244682	2	2.44	6.69	2.75	3.00	.64	24.3
	C4A x 3	12"-20"	244683	2	3.00	6.88	2.88	3.00	.77	29.2
	C4A x 3-7/16	18"-24"	244684	2	3.44	9.13	3.88	4.00	.89	39.3
SCXT4A 3-Hole Drive Shafts	C4A x 1-1/2	9"	244494	1	1.50	9.00	2.13	3.00	.52	20.5
	C4A x 2	9"-12"	244496	1	2.00	9.00	2.13	3.00	.64	23.5
	C4A x 2-7/16	12"-14"	244497	1	2.44	9.69	2.75	3.00	.64	28.2
	C4A x 3	12"-20"	244498	1	3.00	9.88	2.88	3.00	.77	35.2
	C4A x 3-7/16	18"-24"	244499	1	3.44	14.13	3.88	4.00	.89	49.8
SCXT4A Stainless Steel * 3-Hole Drive Shafts	C4A x 1-1/2	9"	354351	1	1.50	9.00	2.13	3.00	.52	20.5
	C4A x 2	9"-12"	354352	1	2.00	9.00	2.13	3.00	.64	23.5
	C4A x 2-7/16	12"-14"	354353	1	2.44	9.69	2.75	3.00	.64	28.2
	C4A x 3	12"-20"	354354	1	3.00	9.88	2.88	3.00	.77	35.2
	C4A x 3-7/16	18"-24"	354355	1	3.44	14.13	3.88	4.00	.89	49.8
SCXT4A Short Series Drive Shafts	C4AS x 1-1/2	9"	244599	2	1.50	5.25	1.38	3.00	.52	18
	C4AS x 2	9"-12"	244600	2	2.00	5.25	1.38	3.00	.64	20.1
	C4AS x 2-7/16	12"-14"	244601	2	2.44	5.31	1.38	3.00	.64	22.5
	C4AS x 3	12"-20"	244602	2	3.00	5.44	1.44	3.00	.77	26.3
	C4AS x 3-7/16	18"-24"	244603	2	3.44	7.19	1.94	4.00	.89	34.9

### SCXT5B Optional Drive Shafts

Description	Drive Shaft	Screw Dia.	Part No.	Figure	A	B	C	D	F	Weight
SCXT5B Stainless Steel * Drive Shafts	C5B x 2	9"-12"	245651	2	2.00	6.00	2.13	3.00	.64	29.4
	C5B x 2-7/16	12"-14"	245652	2	2.44	6.69	2.75	3.00	.64	33
	C5B x 3	12"-20"	245653	2	3.00	6.88	2.88	3.00	.77	37.9
	C5B x 3-7/16	18"-24"	245654	2	3.44	9.13	3.88	4.00	.89	48.3
SCXT5B 3-Hole Drive Shafts	C5B x 2	9"-12"	245474	1	2.00	9.00	2.13	3.00	.64	32.1
	C5B x 2-7/16	12"-14"	245476	1	2.44	9.69	2.75	3.00	.64	36.9
	C5B x 3	12"-20"	245477	1	3.00	9.88	2.88	3.00	.77	43.9
	C5B x 3-7/16	18"-24"	245478	1	3.44	14.13	3.88	4.00	.89	58.8
SCXT5B Stainless Steel * 3-Hole Drive Shafts	C5B x 2	9"-12"	355225	1	2.00	9.00	2.13	3.00	.64	32.1
	C5B x 2-7/16	12"-14"	355226	1	2.44	9.69	2.75	3.00	.64	36.9
	C5B x 3	12"-20"	355227	1	3.00	9.88	2.88	3.00	.77	43.9
	C5B x 3-7/16	18"-24"	355228	1	3.44	14.13	3.88	4.00	.89	58.8
SCXT5B Short Series Drive Shafts	C5BS x 2	9"-12"	355179	2	2.00	5.19	1.31	3.00	.64	28.7
	C5BS x 2-7/16	12"-14"	355180	2	2.44	5.31	1.38	3.00	.64	31.1
	C5BS x 3	12"-20"	355181	2	3.00	5.44	1.44	3.00	.77	35.1
	C5BS x 3-7/16	18"-24"	355182	2	3.44	7.19	1.94	4.00	.89	43.8

\* Supplied as #316 stainless steel.

SELECTION PAGES G1-81-G1-89	DIMENSIONS PAGES G1-90-G1-117	RELATED PRODUCTS PAGES G1-144-G1-184	ENGINEERING/TECHNICAL PAGES G1-187-G1-201
--------------------------------	----------------------------------	---	--



## Screw Conveyor Shaft Mount Speed Reducers

### SCXT SCREW CONVEYOR DRIVE OPTIONAL DRIVE SHAFTS (CONT'D)

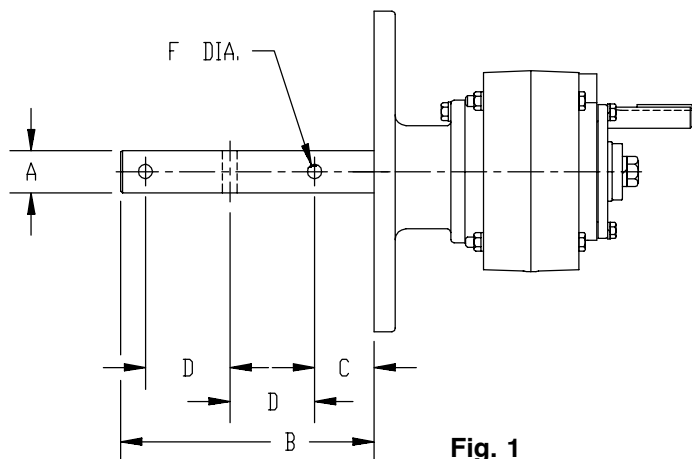


Fig. 1

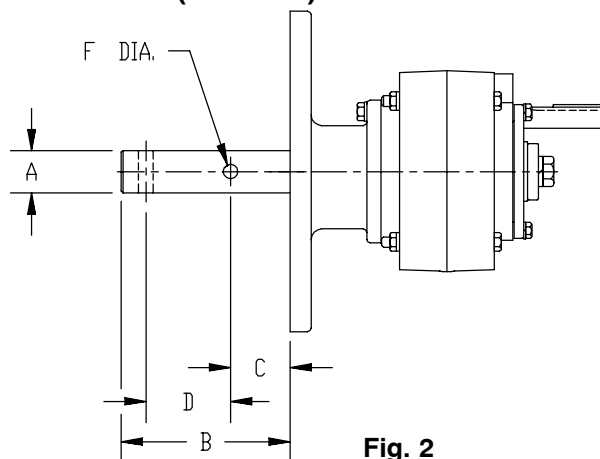


Fig. 2

#### SCXT6 Optional Drive Shafts

Description	Drive Shaft	Screw Dia.	Part No.	Figure	A	B	C	D	F	Weight
SCXT6 Stainless Steel * Drive Shafts	C6 x 2-7/16	12"-14"	356014	2	2.44	6.69	2.75	3.00	.64	47.7
	C6 x 3	12"-20"	356015	2	3.00	6.88	2.88	3.00	.77	52.7
	C6 x 3-7/16	18"-24"	356016	2	3.44	9.13	3.88	4.00	.89	63
SCXT6 3-Hole Drive Shafts	C6 x 2-7/16	12"-14"	351327	1	2.44	9.69	2.75	3.00	.64	51.6
	C6 x 3	12"-20"	351328	1	3.00	9.88	2.88	3.00	.77	58.7
	C6 x 3-7/16	18"-24"	351329	1	3.44	14.13	3.88	4.00	.89	73.5
SCXT6 Stainless Steel * 3-Hole Drive Shaft	C6 x 2-7/16	12"-14"	356275	1	2.44	9.69	2.75	3.00	.64	51.6
	C6 x 3	12"-20"	356276	1	3.00	9.88	2.88	3.00	.77	58.7
	C6 x 3-7/16	18"-24"	356277	1	3.44	14.13	3.88	4.00	.89	73.5
SCXT6 Short Series Drive Shafts	C6S x 2-7/16	12"-14"	356101	2	2.44	5.31	1.38	3.00	.64	45.9
	C6S x 3	12"-20"	356102	2	3.00	5.44	1.44	3.00	.77	49.8
	C6S x 3-7/16	18"-24"	356103	2	3.44	7.19	1.94	4.00	.89	58.5

#### SCXT7 Optional Drive Shafts

Description	Drive Shaft	Screw Dia.	Part No.	Figure	A	B	C	D	F	Weight
SCXT7 Stainless Steel * Drive Shafts	C7 x 2-7/16	12"-14"	356240	2	2.44	6.69	2.75	3.00	.64	58
	C7 x 3	12"-20"	356241	2	3.00	6.88	2.88	3.00	.77	70
	C7 x 3-7/16	18"-24"	356242	2	3.44	9.13	3.88	4.00	.89	80.3
SCXT7 3-Hole Drive Shafts	C7 x 2-7/16	12"-14"	351332	1	2.44	9.69	2.75	3.00	.64	61.9
	C7 x 3	12"-20"	351333	1	3.00	9.88	2.88	3.00	.77	76
	C7 x 3-7/16	18"-24"	351334	1	3.44	14.13	3.88	4.00	.89	90.8
SCXT7 Stainless Steel * 3-Hole Drive Shafts	C7 x 2-7/16	12"-14"	356281	1	2.44	9.69	2.75	3.00	.64	61.9
	C7 x 3	12"-20"	356282	1	3.00	9.88	2.88	3.00	.77	76
	C7 x 3-7/16	18"-24"	356283	1	3.44	14.13	3.88	4.00	.89	90.8
SCXT7 Short Series Drive Shafts	C7S x 2-7/16	12"-14"	356235	2	2.44	5.31	1.38	3.00	.64	63.2
	C7S x 3	12"-20"	356236	2	3.00	5.44	1.44	3.00	.77	67.1
	C7S x 3-7/16	18"-24"	356237	2	3.44	7.19	1.94	4.00	.89	75.8

\* Supplied as #316 stainless steel.

**NOTE:** See page G1-118 - G1-119 for dimensions and part numbers for drive shafts available for SCXT-8 Screw Conveyor Drives.

SELECTION PAGES G1-81-G1-89	DIMENSIONS PAGES G1-90-G1-117	RELATED PRODUCTS PAGES G1-144-G1-184	ENGINEERING/TECHNICAL PAGES G1-187-G1-201
--------------------------------	----------------------------------	---	--