

BALDOR® • RELIANCE 

Product Information Packet

353T

.25/.06HP,3450/1725RPM,1PH,60HZ,3520Q

Part Detail							
Revision:	AW	Status:	PRD/A	Change #:		Proprietary:	No
Type:	AC	Elec. Spec:	L5WG0156	CD Diagram:	CD0364	Mfg Plant:	
Mech. Spec:	L35-150	Layout:	L5LY0150	Poles:	02/04	Created Date:	
Base:	RG	Eff. Date:	07-20-2018	Leads:	4#18		

Specs			
Nameplate Output:	.25/.06		
Product Style:	DENTAL LATHE		

Nameplate NP3356L

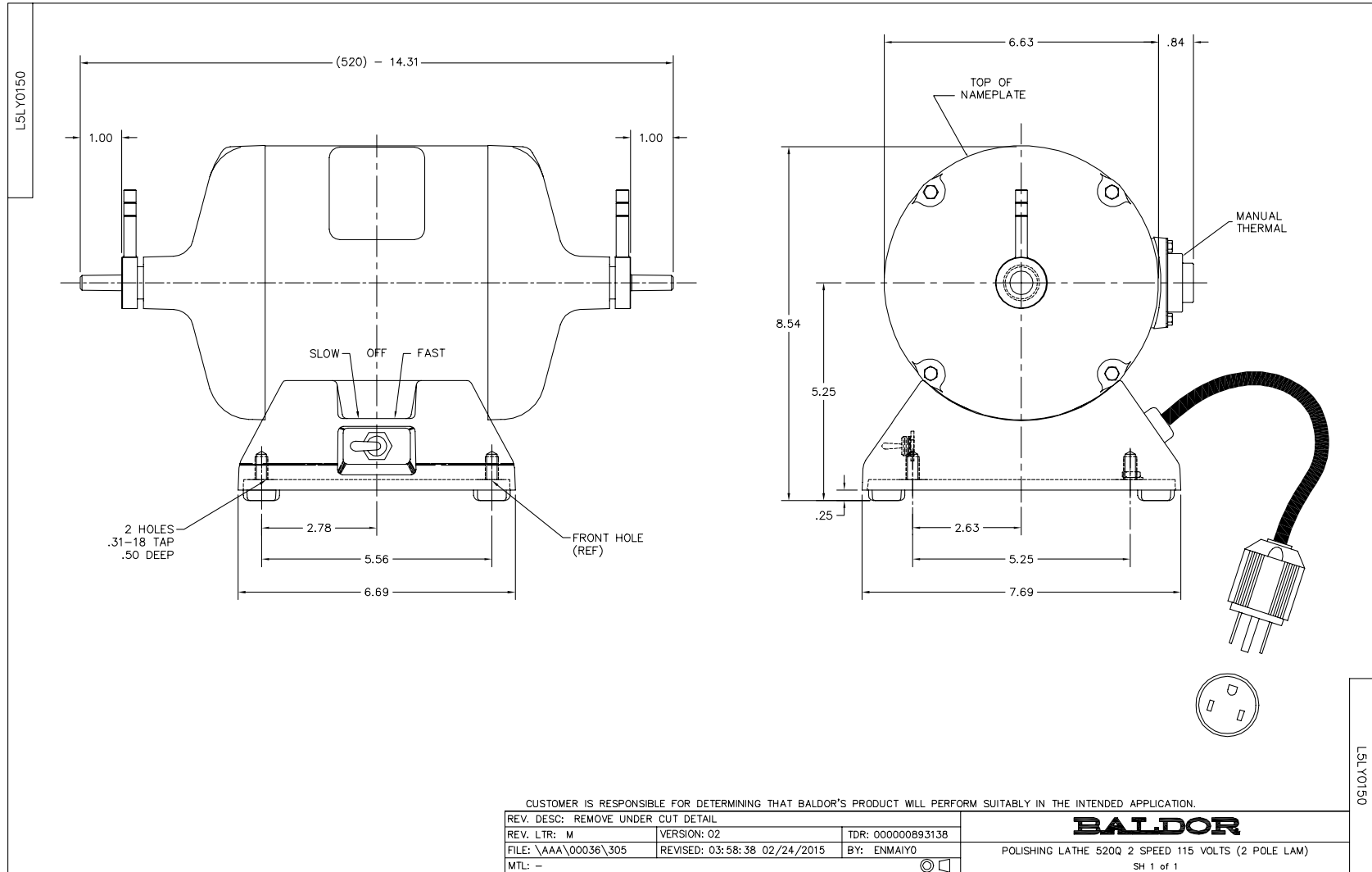
CAT.NO.	353T		
SPEC.	L35-150-156		
HP	.25/.06		
VOLTS	115		
PHASE	1	AMPS	3/1.5
CYCLE	60		
RPM	3450/1725		
CL	F		
RATING	40C AMB-CONT		
SERIAL			

Parts List		
Part Number	Description	Quantity
SA037697	SA L35-150-156	1.000 EA
RA033722	RA L35-150-156	1.000 EA
L5BA3000A01	BASE, MACH	1.000 EA
11XW1032G06	10-32 X .38, TAPTITE II, HEX WSHR SLTD U	1.000 EA
HW3001B01	BRASS CUP WASHER, FOR #10 SCREW	1.000 EA
L5EP3900A01SP	ENDPLATE, MACH	1.000 EA
HA6105A01	DR-178A L.H.EJECT.W/HANDL (WELKER)	1.000 EA
LD5001A02	CORD & PLUG ASSY 18-3 SJT .33 DIA. 10 AM	1.000 EA
WD4102A01	SR-6L-1 HEYCO STRN RELIEF OR 23MPO6L10 M	1.000 EA
SP9008A01	SWITCH ASSY	1.000 EA
51XW0832A07	8-32 X .44, TAPTITE II, HEX WSHR SLTD SE	2.000 EA
WD1000A08	40976 AMP TERM.(3M/REEL)	2.000 EA
WD1000B14	T&B B87M, NON-INS RING, 18-14GA, #10	2.000 EA
HA1025A04	FELT WSH 1.25OD/.492ID X .125	1.000 EA
L5EP3900A02	ENDPLATE, MACH	1.000 EA
HA1025A04	FELT WSH 1.25OD/.492ID X .125	1.000 EA
HA6105A02	DR-178B R.H.EJECT.W/HANDL (WELKER)	1.000 EA
HA3100A29	THRUBOLT 10-32 X 7.00	4.000 EA
XY1032A02	10-32 HEX NUT DIRECTIONAL SERRATION	4.000 EA
L5CB4500A01	BASE COVER, STAMPED (PLATED YELLOW)	1.000 EA
RM1005A01SP	BUMPER- #2089 (R-R CO)	4.000 EA
15XF1032A10	10-32X5/8 PIN HD PHL TY FSEE JT	4.000 EA
85XU0407S04	4X1/4 U DRIVE PIN STAINLESS	4.000 EA
51XB1214A10	12-14 X 5/8HX WS SL SR TYBX	3.000 EA

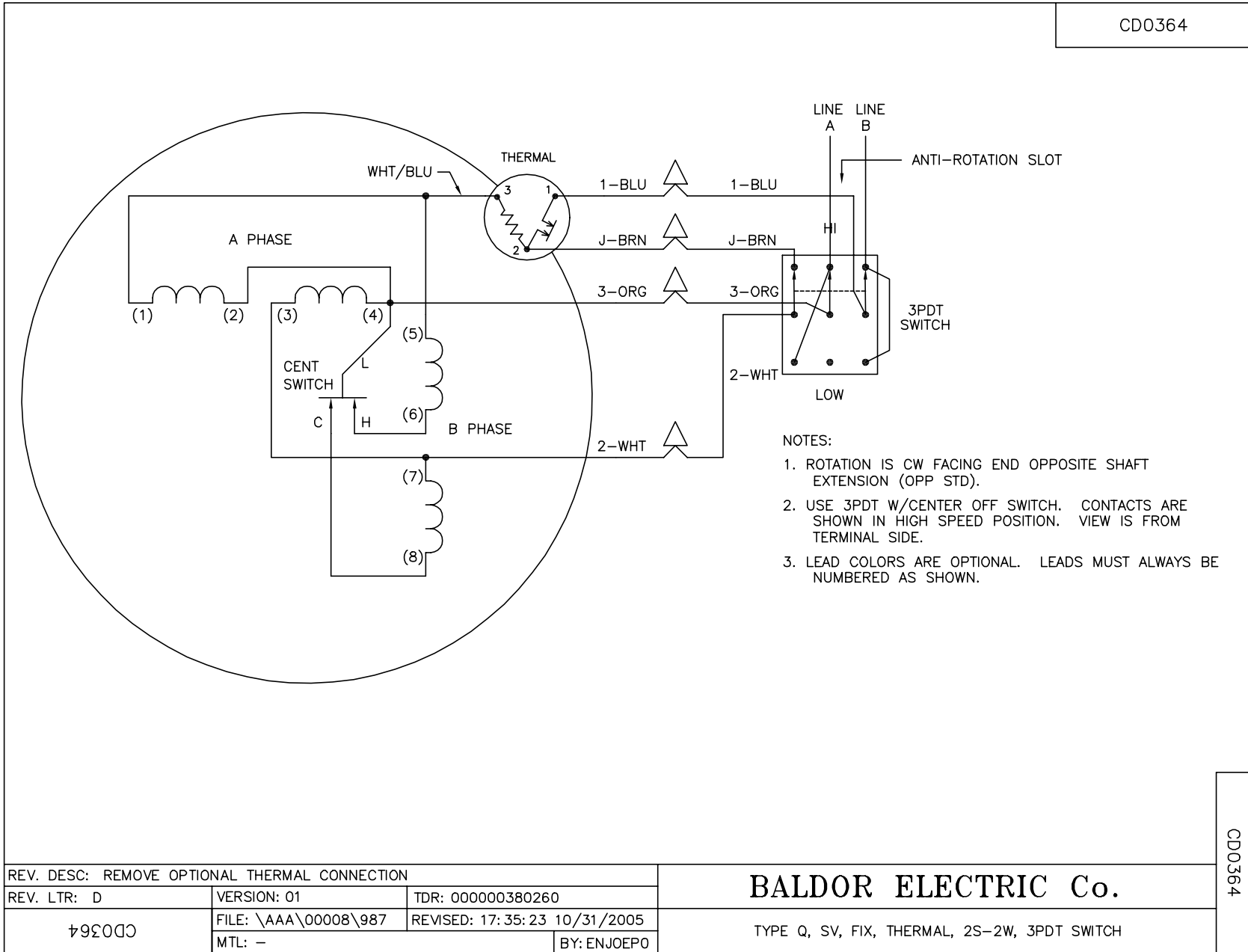
Parts List (continued)		
Part Number	Description	Quantity
HW1000A12X	#12 SAE FLAT WASHER	3.000 EA
WD4006A01	WIRE JOINT,T&B RB-4 OR RB-44	1.000 EA
MJ1000A02	GREASE, POLYREX EM EXXON (USe 4824-15A)	0.050 LB
HW5100A03	WAVY WASHER (W1543-017)	2.000 EA
HA1000A16	DR2567A .02 BRG GUARD B N	2.000 EA
MG1000G18	PAINT, 189-905 SILVER HAMR	0.017 GA
LB1087	LABEL,MANUAL RESET (ROLL LABEL)	1.000 EA
LB1119N	WARNING LABEL	1.000 EA
LB1208	WARNING LABEL FOR POLISHING LATHE MOTORS	1.000 EA
NP3356L	ALUM LATHE W/THERMAL NO LOGOS	1.000 EA
SP5051A30	MODEL 35 TORQ STATIONARY SWITCH, 2SPD, T	1.000 EA
36PA1000	PKG GRP, PRINT PK1016A06	1.000 EA
MG2000A02	RUST VETO-377-HF HOUGHTON	0.001 GA
MN904	Baldor Polishing Lathes 6/05	1.000 EA

Accessories		
Part Number	Description	Multiplier
R1	DR-3544 R1 RH CHUCK	A8
R2	DR-3546B R2 RH WHEEL CHUCK	A8
R5A	BURR CHUCK-RH	A8
R6	ARBOR BAND CHUCK	A8
L3	DR-3545 LH HD WHEEL CHUCK	A8
L4	DR-3547B L4 LH SF WHEEL CHUCK	A8

No performance data has been
assigned to this product.



CD0364



REV. DESC: REMOVE OPTIONAL THERMAL CONNECTION		
REV. LTR: D	VERSION: 01	TDR: 000000380260
CD0364	FILE: \AAA\00008\987	REVISED: 17:35:23 10/31/2005
	MTL: -	BY: ENJOEPO

BALDOR ELECTRIC Co.

TYPE Q, SV, FIX, THERMAL, 2S-2W, 3PDT SWITCH

CD0364