

BALDOR® • RELIANCE 

Product Information Packet

359T

.5HP,3450RPM,1PH,60HZ,3520S,LATH

| Part Detail | | | | | | | |
|-------------|---------|-------------|------------|-------------|--------|---------------|------------|
| Revision: | AX | Status: | PRD/A | Change #: | | Proprietary: | No |
| Type: | AC | Elec. Spec: | L5WG0158 | CD Diagram: | CD0348 | Mfg Plant: | |
| Mech. Spec: | L35-166 | Layout: | L5LY0166 | Poles: | 02 | Created Date: | 08-08-2007 |
| Base: | RG | Eff. Date: | 07-20-2018 | Leads: | 2#18 | | |

| Specs | | | |
|-------------------|--------------|--|--|
| Nameplate Output: | .5 | | |
| Product Style: | DENTAL LATHE | | |

Nameplate NP3356L

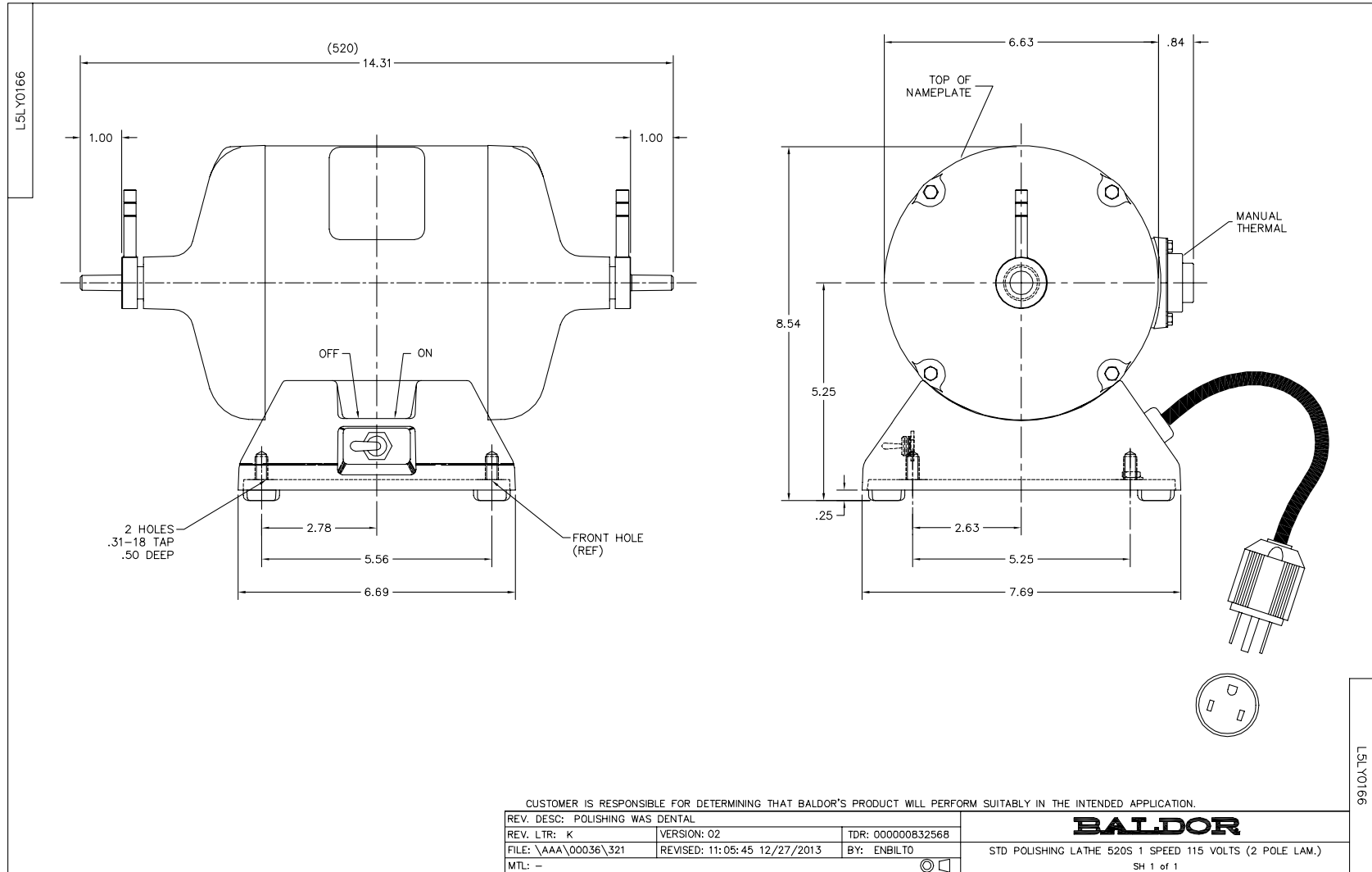
| | | | |
|----------------|--------------|-------------|-----|
| CAT.NO. | 359T | | |
| SPEC. | L35-166-158 | | |
| HP | .5 | | |
| VOLTS | 115 | | |
| PHASE | 1 | AMPS | 4.7 |
| CYCLE | 60 | | |
| RPM | 3450 | | |
| CL | F | | |
| RATING | 40C AMB-CONT | | |
| SERIAL | | | |

| Parts List | | |
|---------------|--|----------|
| Part Number | Description | Quantity |
| SA037699 | SA L35-166-158 | 1.000 EA |
| RA033724 | RA L35-166-158 | 1.000 EA |
| L5BA3000A01 | BASE, MACH | 1.000 EA |
| 11XW1032G06 | 10-32 X .38, TAPTITE II, HEX WSHR SLTD U | 1.000 EA |
| HW3001B01 | BRASS CUP WASHER, FOR #10 SCREW | 1.000 EA |
| L5EP3900A01SP | ENDPLATE, MACH | 1.000 EA |
| HA6105A01 | DR-178A L.H.EJECT.W/HANDL (WELKER) | 1.000 EA |
| LD5001A02 | CORD & PLUG ASSY 18-3 SJT .33 DIA. 10 AM | 1.000 EA |
| WD4102A01 | SR-6L-1 HEYCO STRN RELIEF OR 23MPO6L10 M | 1.000 EA |
| SP9000SP | 80600BJ A-H OR 1520237-2 TYCO;2PST,125/2 | 1.000 EA |
| HW1003A50 | LOCKWASHER,1/2",EXT.TOOTHZINC PLATED | 1.000 EA |
| NS2514A01 | INSULATOR, SWITCH | 1.000 EA |
| 51XW0832A07 | 8-32 X .44, TAPTITE II, HEX WSHR SLTD SE | 2.000 EA |
| WD1000A08 | 40976 AMP TERM.(3M/REEL) | 2.000 EA |
| WD1000B14 | T&B B87M, NON-INS RING, 18-14GA, #10 | 2.000 EA |
| HA1025A04 | FELT WSH 1.25OD/.492ID X .125 | 1.000 EA |
| L5EP3900A02 | ENDPLATE, MACH | 1.000 EA |
| HA1025A04 | FELT WSH 1.25OD/.492ID X .125 | 1.000 EA |
| HA6105A02 | DR-178B R.H.EJECT.W/HANDL (WELKER) | 1.000 EA |
| HA3100A29 | THRUBOLT 10-32 X 7.00 | 4.000 EA |
| XY1032A02 | 10-32 HEX NUT DIRECTIONAL SERRATION | 4.000 EA |
| L5CB4500A01 | BASE COVER, STAMPED (PLATED YELLOW) | 1.000 EA |
| RM1005A01SP | BUMPER- #2089 (R-R CO) | 4.000 EA |
| 15XF1032A10 | 10-32X5/8 PIN HD PHL TY FSEE JT | 4.000 EA |

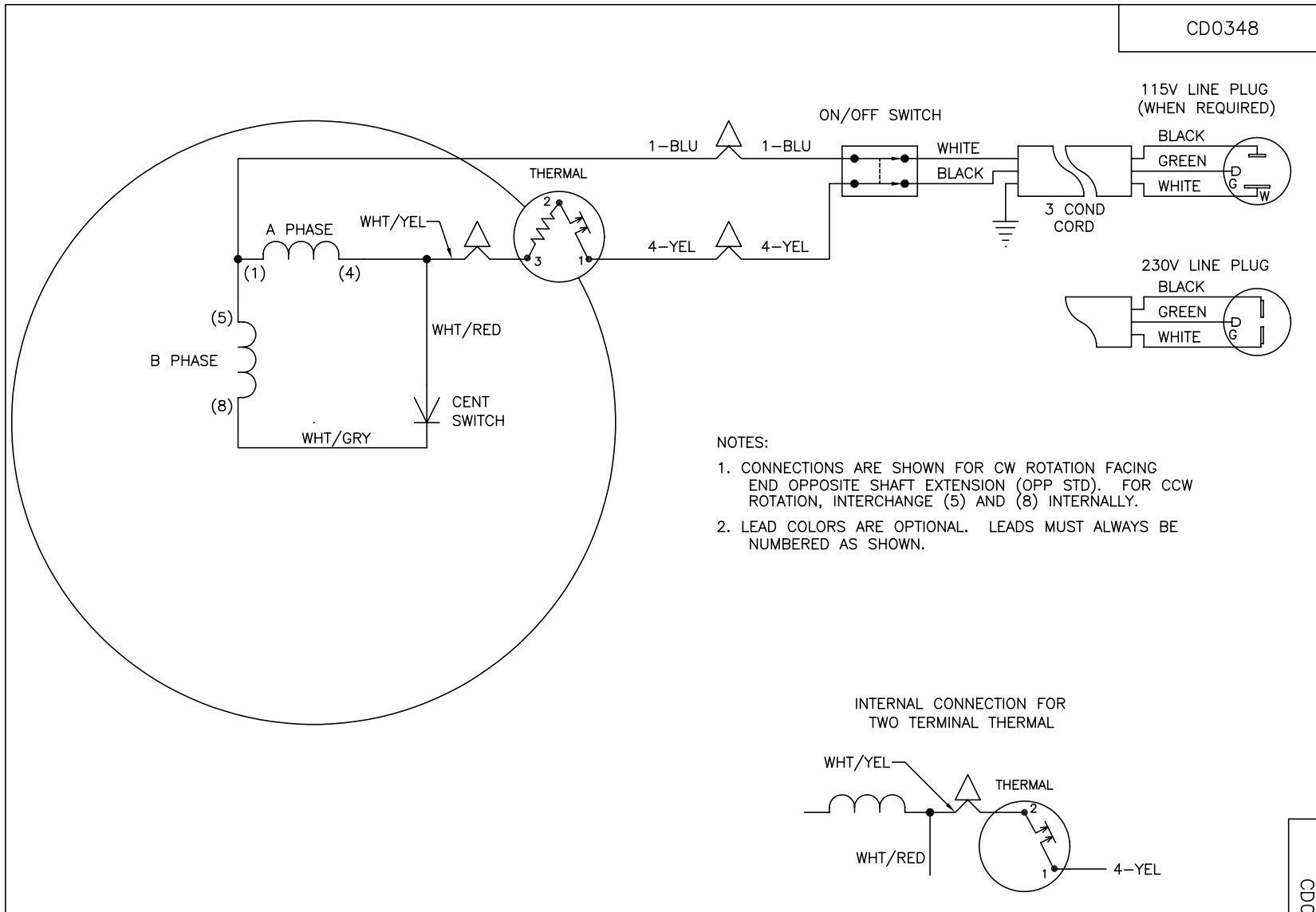
| Parts List (continued) | | |
|------------------------|--|----------|
| Part Number | Description | Quantity |
| 85XU0407S04 | 4X1/4 U DRIVE PIN STAINLESS | 4.000 EA |
| 51XB1214A10 | 12-14 X 5/8HX WS SL SR TYBX | 3.000 EA |
| HW1000A12X | #12 SAE FLAT WASHER | 3.000 EA |
| WD4006A01 | WIRE JOINT,T&B RB-4 OR RB-44 | 1.000 EA |
| MJ1000A02 | GREASE, POLYREX EM EXXON (USe 4824-15A) | 0.050 LB |
| HW5100A03 | WAVY WASHER (W1543-017) | 2.000 EA |
| HA1000A16 | DR2567A .02 BRG GUARD B N | 2.000 EA |
| MG1000G18 | PAINT, 189-905 SILVER HAMR | 0.017 GA |
| LB1013 | LABEL, "ON" AND "OFF" | 1.000 EA |
| LB1087 | LABEL,MANUAL RESET (ROLL LABEL) | 1.000 EA |
| LB1119N | WARNING LABEL | 1.000 EA |
| LB1208 | WARNING LABEL FOR POLISHING LATHE MOTORS | 1.000 EA |
| NP3356L | ALUM LATHE W/THERMAL NO LOGOS | 1.000 EA |
| SP5056SP | MODEL 34/35 SINGLE ARM STAT. SWITCH W/ T | 1.000 EA |
| 36PA1000 | PKG GRP, PRINT PK1016A06 | 1.000 EA |
| MN904 | Baldor Polishing Lathes 6/05 | 1.000 EA |

| Accessories | | |
|--------------------|-------------------------------|-------------------|
| Part Number | Description | Multiplier |
| R1 | DR-3544 R1 RH CHUCK | A8 |
| R2 | DR-3546B R2 RH WHEEL CHUCK | A8 |
| R5A | BURR CHUCK-RH | A8 |
| R6 | ARBOR BAND CHUCK | A8 |
| L3 | DR-3545 LH HD WHEEL CHUCK | A8 |
| L4 | DR-3547B L4 LH SF WHEEL CHUCK | A8 |

No performance data has been
assigned to this product.



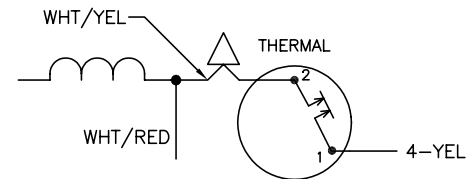
CD0348



NOTES:

1. CONNECTIONS ARE SHOWN FOR CW ROTATION FACING END OPPOSITE SHAFT EXTENSION (OPP STD). FOR CCW ROTATION, INTERCHANGE (5) AND (8) INTERNALLY.
2. LEAD COLORS ARE OPTIONAL. LEADS MUST ALWAYS BE NUMBERED AS SHOWN.

INTERNAL CONNECTION FOR TWO TERMINAL THERMAL



| | | | |
|-------------------------------------|---------|-------------------------|--------------|
| REV. DESC: ADD OPTIONAL LEAD COLORS | | | |
| REV. LTR: D | BY: JLP | REVISED: 11/15/00 10:43 | TDR: 0225139 |
| 84200 | | FILE: AAA00028088 | REF: - |
| | | MTL: - | |

BALDOR ELECTRIC Co.

TYPE S, SV, FIX, THERMAL, 2 LDS, SW&CD&PLUG (DENTAL LATHE)

CD0348