



# INTRODUCTION

The Marbett component range enables Rexnord Industries, LLC to be the preferred global FlatTop solutions supplier for conveyors and machines by providing a complete package with chains to maximize end user and OEM productivity.

Rexnord chains reach their best performance by the use of low-friction/low-wear Marbett® chain guide-return solutions, resulting in higher productivity and cost savings for the end user:

- Reduced downtime, reduced maintenance and reduced replacement costs due to extended chain (and guide) life
- Reduced energy consumption and reduced conveyor costs (longer conveyor length = reduced number of drives)
- Limited or no lubrication possible
- Minimized noise due to material and design solutions.

The top quality of Rexnord chains along with the high performance Marbett guides for container and package handling achieve a high conveyor efficiency:

- Prevent product tippage, container damage/discards due to low friction materials, resulting in reduced downtimes and better container quality.

Conveyor construction becomes easy, quick and repeatable through the Marbett components modular concept:

- Clamps, brackets, joints, bearing heads, support bases and levellers are designed to easily connect to commercial tubes, rods and metal structures.
- Eliminates the need for welded parts and extensive labor to assemble conveyor systems, resulting in higher productivity, reduced conveyor construction costs and better quality

Parts are designed to meet sanitation requirements and are easily cleanable. They have high corrosion and chemical resistance and are the right solution in all applications where frequent washings are needed.





Marbett® Convex Guide Rail  
**Page 5**



Marbett® Round Guide Rail  
**Page 5**



Marbett® Flat Guide Rail  
**Page 6**



Marbett® 1" Flat Guide Rail  
**Page 6**



PART 367  
Marbett® Flat Guide Rail  
**Page 7**



Marbett® 1" Tee Guide Rail  
**Page 7**



Marbett® 1-1/4" Tee Guide Rail  
**Page 8**



Marbett® 1.6" Tee Guide Rail  
**Page 8**



Marbett® 2-1/4" Tee Guide Rail  
**Page 9**



Marbett® Neck Guide Rail  
**Page 9**



Marbett® Edge Guide Rail - **Page 10**



Marbett® Tab Tee Guide Rail -  
**Page 10**



PART 369  
Marbett® Guide Rail  
Connecting Bar - **Page 11**



PART 371  
Marbett® Guide Rail  
Connecting Link - **Page 11**



PART 902  
Marbett® ViseSplice™  
**Page 12**



PART 903  
Marbett® ViseClamp™  
**Page 12**



Upper Conveyor Bracket  
**Page 13**



Lower Conveyor Bracket  
**Page 13**



Lower Conveyor  
Bracket Type 2  
**Page 14**



Offset Upper Conveyor  
Bracket Type B  
**Page 14**



Lower Conveyor  
Bracket Type 3  
**Page 15**



Offset Upper Conveyor  
Bracket Type A  
**Page 15**



PART 210  
Marbett® Guide Rail Clamp  
**Page 16**



PART 210  
Marbett® Rail Clamp Assy  
**Page 17**



PART 210  
Marbett® Etched Guide Rail  
Clamp Assy - **Page 17**



PART 174  
Marbett® Cross Clamp  
**Page 18**



PART 174  
Marbett® Cross Clamp with  
Setscrew - **Page 18**



PART 637  
Marbett® Guide Rail Bracket  
**Page 19**



PART 182  
Marbett® Knob  
**Page 19**



PART 255  
Marbett® Swivel Head  
**Page 20**



PART 256  
Marbett® Swivel  
**Page 20**



PART 567  
Marbett® Roller Transfer (Side)  
**Page 21**



PART 568  
Marbett® Roller Transfer  
(Center) - **Page 21**



PART 569  
Marbett® Roller Transfer (Side)  
**Page 22**



PART 672  
Marbett® Roller Transfer  
**Page 22**



PART 557  
Marbett® (Center) Roller Guide  
**Page 23**



PART 580  
Marbett® Roller Transfer  
**Page 23**



PART 570  
Marbett® Roller Guide  
**Page 24**



PART 518  
Marbett® Control Contact  
Lever - **Page 24**



PART 595  
Marbett® T-Clamp  
**Page 25**



PART 763  
Marbett® T-Clamp  
**Page 25**



PART 612  
Marbett® Split Shaft Collar  
with Round Bore- **Page 26**



PART 612  
Marbett® Split Shaft Collar  
with Square Bore - **Page 26**



PART 613  
Marbett® Bi-material  
Return Roller - **Page 27**



PART 614  
Marbett® Bi-material  
Return Roller - **Page 27**



PART 657  
Marbett® Bi-material  
Return Roller - **Page 28**



PART 555  
Marbett® Guide Flange  
**Page 28**



PART 302  
Marbett® Ratchet Handle  
**Page 29**



PART 303  
Marbett® Ratchet Handle  
**Page 29**



PART 905  
Marbett® Modular Nose-over  
Bar (Standard) - **Page 30**



PART 905  
Marbett® Modular Nose-over  
Bar (Low Profile) - **Page 30**



PART 905  
Marbett® Modular Nose-over  
Bar (Dynamic) - **Page 31**



PART 180  
Marbett® Tube End  
**Page 32**



PART 224  
Marbett® Tube End  
**Page 32**



PART 94  
Marbett® Teardrop Leveler  
**Page 33**



PART 133  
Marbett® Leveler  
**Page 33**



PART 323  
Marbett® Leveler  
**Page 34**



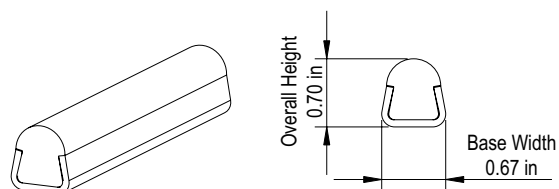
PART 479  
Marbett® Leveler  
**Page 34**



PART 169  
Marbett® Leveler  
**Page 35**

**Marbett® Convex Guide Rail**

Photo shows Guide Rail with Round white UHMW profile and 14 gauge stainless steel sheath.

**Drawing****Product Information**

Part Number	Stock Length (ft)
514-145-4	8
514-145-1	10

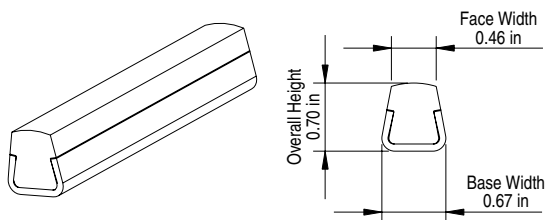
**Additional Notes**

FDA Approved white UHMWPE profile  
14 gauge stainless steel sheath

Marbett is a registered trademark of Rexnord Industries, LLC. All Rights Reserved.

**Marbett® Round Guide Rail**

Photo shows Guide Rail with Convex white UHMW profile and 14 gauge stainless steel sheath.

**Drawing****Product Information**

Part Number	Stock Length (ft)
514-158-1	10

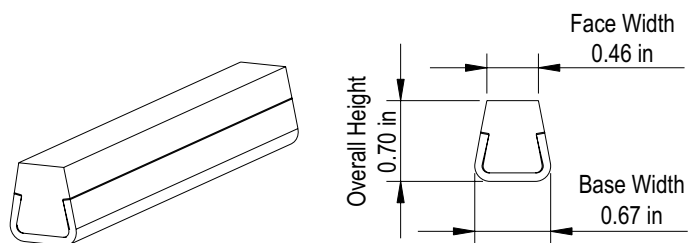
**Additional Notes**

FDA Approved white UHMWPE profile  
14 gauge stainless steel sheath

Marbett is a registered trademark of Rexnord Industries, LLC. All Rights Reserved.

**Marbett® Flat Guide Rail**

Photo shows Guide Rail with Flat white UHMW profile and 14 gauge stainless steel sheath.

**Drawing****Product Information**

Part Number	Stock Length (ft)
514-146-4	8
514-146-1	10

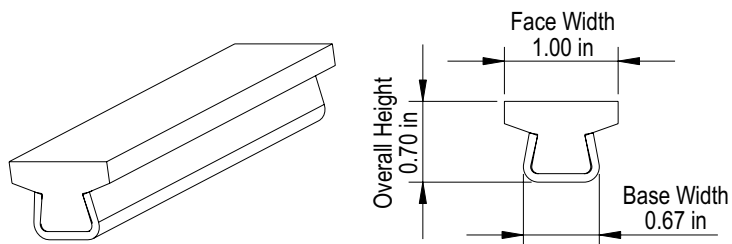
**Additional Notes**

FDA Approved white UHMWPE profile  
14 gauge stainless steel sheath

Marbett is a registered trademark of Rexnord Industries, LLC. All Rights Reserved.

**Marbett® 1" Flat Guide Rail**

Photo shows 1" wide Flat Guide Rail with white UHMW profile and 14 gauge stainless steel sheath.

**Drawing****Product Information**

Part Number	Stock Length (ft)
514-210-4	8
514-210-1	10

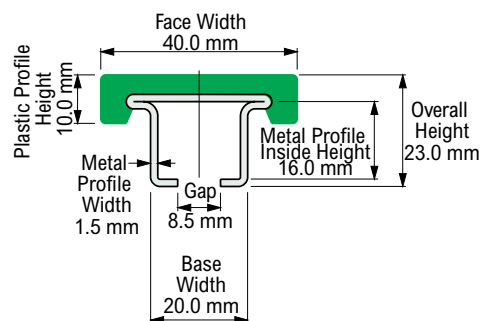
**Additional Notes**

FDA Approved white UHMWPE profile  
14 gauge stainless steel sheath

Marbett is a registered trademark of Rexnord Industries, LLC. All Rights Reserved.

**PART 367 - Marbett® Flat Guide Rail**

Photo shows 40 mm wide Flat Guide Rail with UHMW Profile and standard steel profile

**Drawing****Product Information**

Part Number	Stock Length (ft)
367-655712M	10

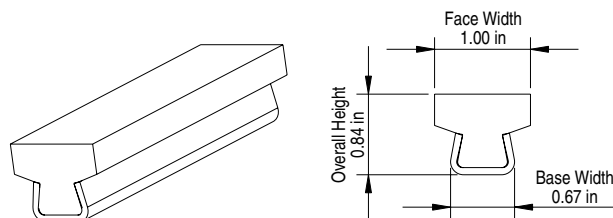
**Additional Notes**

Plastic profile in UHMWPE (black)  
Metal profile in austenitic stainless steel

Marbett is a registered trademark of Rexnord Industries, LLC. All Rights Reserved.

**Marbett® 1" Tee Guide Rail**

Photo shows 1" wide Tee Guide Rail with white UHMW profile and 14 gauge stainless steel sheath.

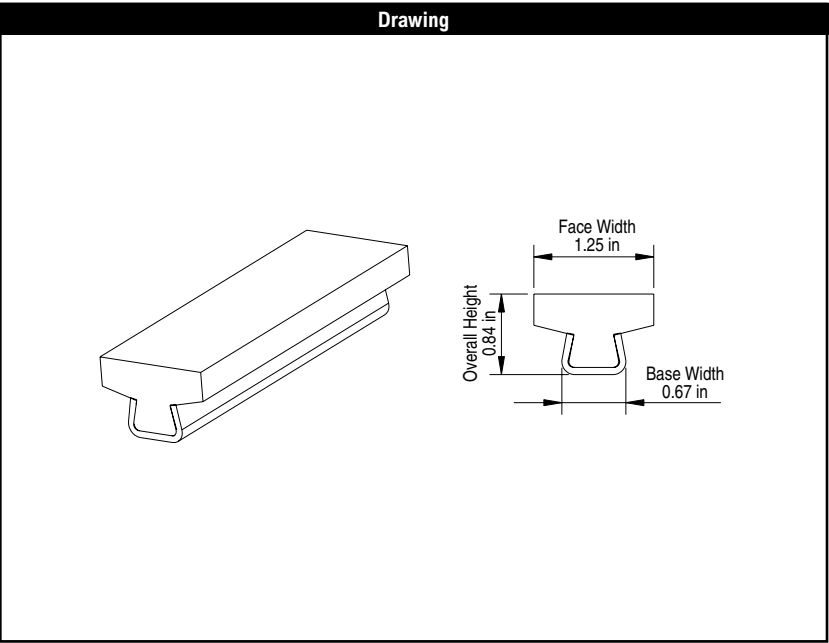
**Drawing****Product Information**

Part Number	Stock Length (ft)
514-209-4	8
514-209-1	10

**Additional Notes**

FDA Approved white UHMWPE profile  
14 gauge stainless steel sheath

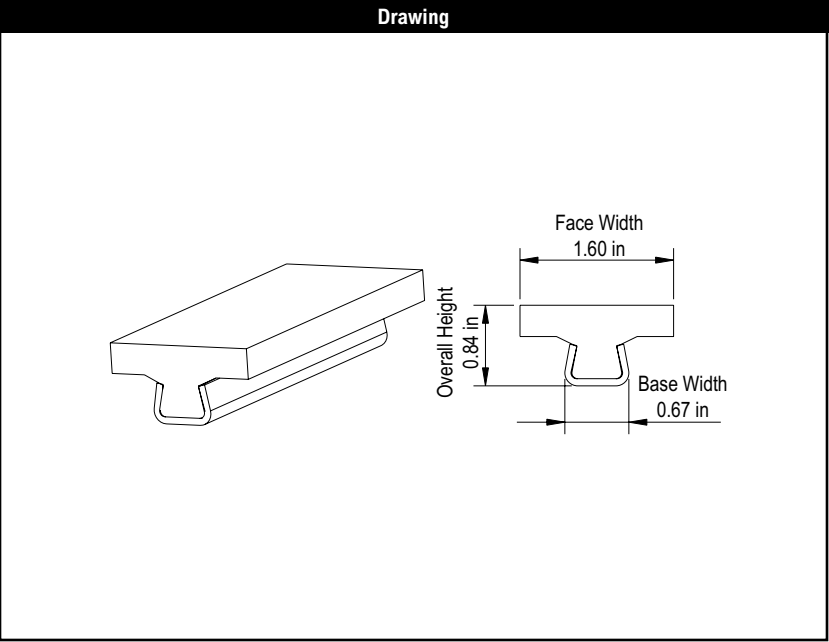
Marbett is a registered trademark of Rexnord Industries, LLC. All Rights Reserved.



Product Information	
Part Number	Stock Length (ft)
514-147-4	8
514-147-1	10

Additional Notes
FDA Approved white UHMWPE profile 14 gauge stainless steel sheath

Marbett is a registered trademark of Rexnord Industries, LLC. All Rights Reserved.



Product Information	
Part Number	Stock Length (ft)
514-175-1	10

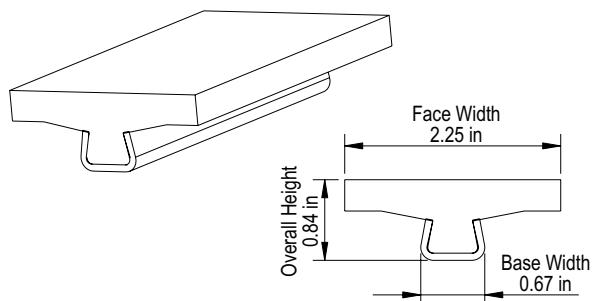
Additional Notes
FDA Approved white UHMWPE profile 14 gauge stainless steel sheath

Marbett is a registered trademark of Rexnord Industries, LLC. All Rights Reserved.



**Marbett® 2-1/4" Tee Guide Rail**

Photo shows 2-1/4" wide Tee Guide Rail with white UHMW profile and 14 gauge stainless steel sheath.

**Drawing****Product Information**

Part Number	Stock Length (ft)
514-176-4	8
514-176-1	10

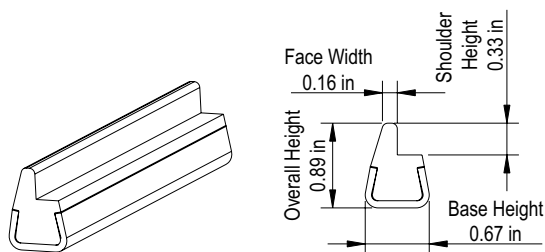
**Additional Notes**

FDA Approved white UHMWPE profile  
14 gauge stainless steel sheath

Marbett is a registered trademark of Rexnord Industries, LLC. All Rights Reserved.

**Marbett® Neck Guide**

Photo shows Neck Guide Rail in white UHMW profile with 14 gauge stainless steel sheath.

**Drawing****Product Information**

Part Number	Stock Length (ft)
514-148-1	10

**Additional Notes**

FDA Approved white UHMWPE profile  
14 gauge stainless steel sheath

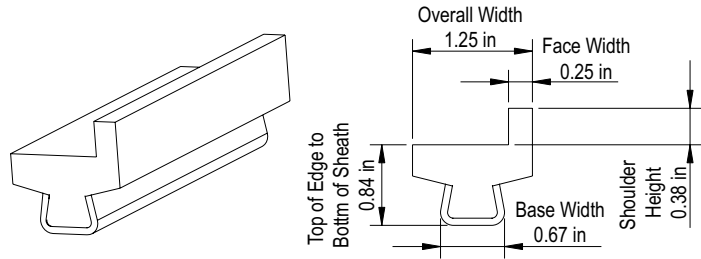
Marbett is a registered trademark of Rexnord Industries, LLC. All Rights Reserved.

**Marbett® Edge Guide Rail**



Photo shows Edge Guide Rail with white UHMW profile and 14 gauge stainless steel sheath.

**Drawing**



**Product Information**

Part Number	Stock Length (ft)
514-235-4	8
514-235-1	10

**Additional Notes**

FDA Approved white UHMWPE profile  
14 gauge stainless steel sheath

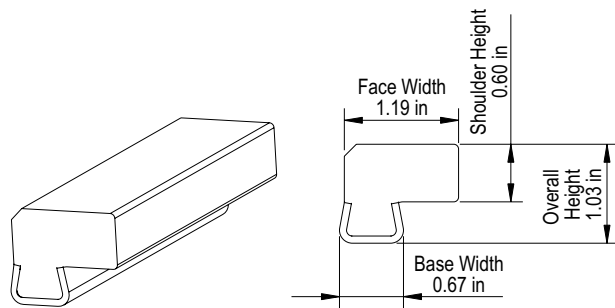
Marbett is a registered trademark of Rexnord Industries, LLC. All Rights Reserved.

**Marbett® Tab Guide Rail**



Photo shows Tab Guide Rail with white UHMW profile and 14 gauge stainless steel sheath.

**Drawing**



**Product Information**

Part Number	Stock Length (ft)
514-236-1	10

**Additional Notes**

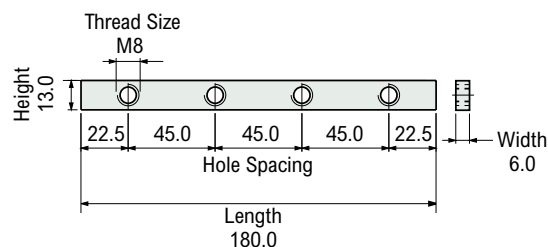
FDA Approved white UHMWPE profile  
14 gauge stainless steel sheath  
For use with Rexnord 882 TableTop® chains

Marbett is a registered trademark of Rexnord Industries, LLC. All Rights Reserved.

## PART 369 - Marbett® Guide Rail Connecting Bar



## Drawing



## Product Information

Part Number	Overall Length (in)	Thread Size
369-69995	7	M8

## Additional Notes

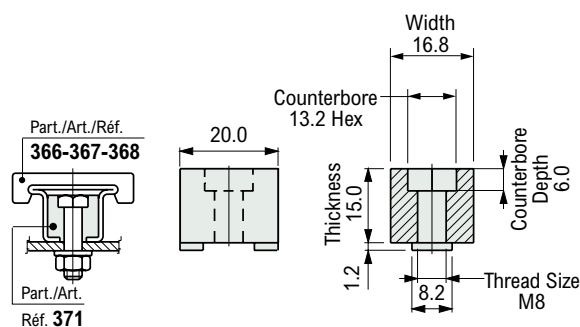
Material: Zinc-plated steel

Marbett is a registered trademark of Rexnord Industries, LLC. All Rights Reserved.

## PART 371 - Marbett® Guide Rail Connecting Link



## Drawing



## Product Information

Part Number	Thread Size
371-61056	M8

## Additional Notes

Material: reinforced polyamide PA FV (black)  
 Use: Easy assembly of wearstrips on frame.  
 Assemble with M6 or M8 hexagon bolt

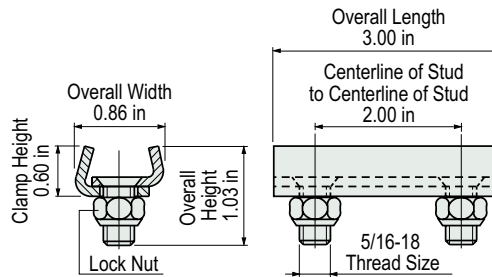
Marbett is a registered trademark of Rexnord Industries, LLC. All Rights Reserved.

PART 902 - Marbett® ViseSplice™



Photo shows the ViseSplice™ clamp.

Drawing



Product Information

Part Number

902-652041

Additional Notes

For use with all Marbett® guide rail profiles  
All stainless steel construction rail profiles  
Tired of opening hundreds of individual bags? Boxes of 100 pieces are also available. Simply add “-100” to the end of the part number. i.e. 902-652041-100 is a box of 100 bulk parts

US Patent #5896980

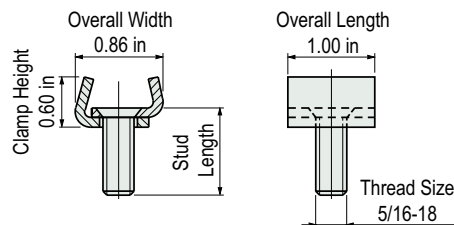
Marbett is a registered trademark of Rexnord Industries, LLC. All Rights Reserved.

PART 903 - Marbett® ViseClamp™



Photo shows a ViseClamp™ with 3/4 inch stud without nut.

Drawing



Product Information

With Nut	Without Nut	Stud Length (in)
Part Number	Part Number	
903-654741	903-654101	3/4
903-654751	903-654111	1

Additional Notes

For use with all Marbett® guide rail profiles  
All stainless steel construction rail profiles  
Tired of opening hundreds of individual bags? Boxes of 100 pieces are also available. Simply add “-100” to the end of the part number. i.e. 903-654101-100 is a box of 100 bulk parts

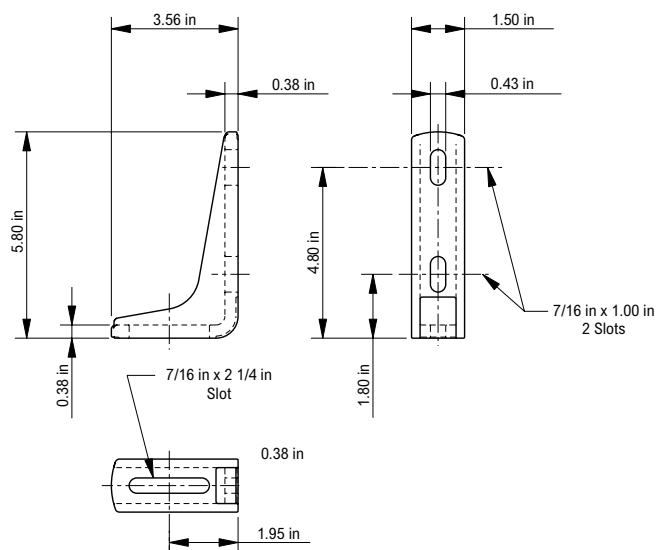
Marbett is a registered trademark of Rexnord Industries, LLC. All Rights Reserved.

## Upper Conveyor Bracket



Photo Shows Conveyor Bracket

## Drawing



## Product Information

Part Number	Length (in)	Width (in)	Slot Width (in)
114-398-1	5.81	3.56	$\frac{7}{16}$

## Additional Notes

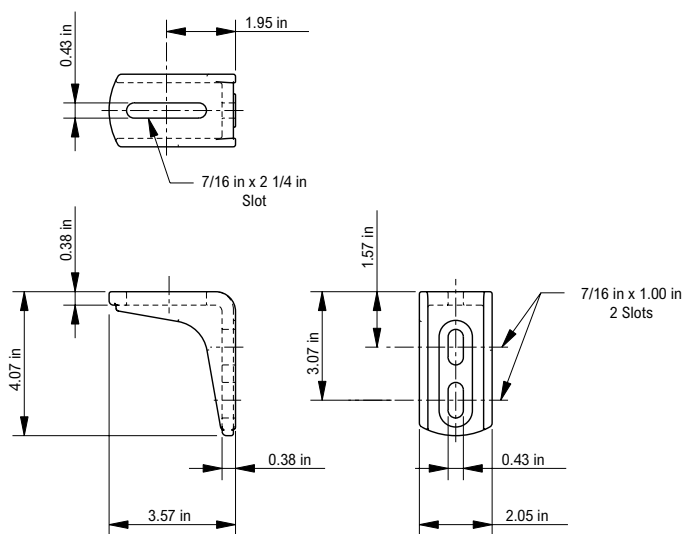
Bracket in Black Glass-Reinforced Nylon

## Lower Conveyor Bracket



Photo Shows Conveyor Bracket

## Drawing



## Product Information

Part Number	Length (in)	Width (in)	Slot Width (in)
114-399-1	4.08	3.56	$\frac{7}{16}$

## Additional Notes

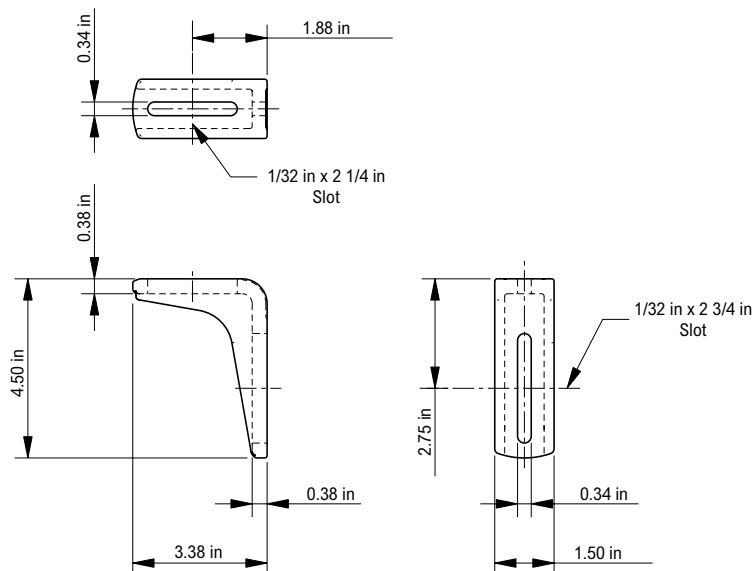
Bracket in Black Glass-Reinforced Nylon

## Lower Conveyor Bracket Type 2



Photo Shows Conveyor Bracket

## Drawing



## Product Information

Part Number	Length (in)	Width (in)	Slot Width (in)
114-671-1	4.50	3.38	$\frac{11}{32}$

## Additional Notes

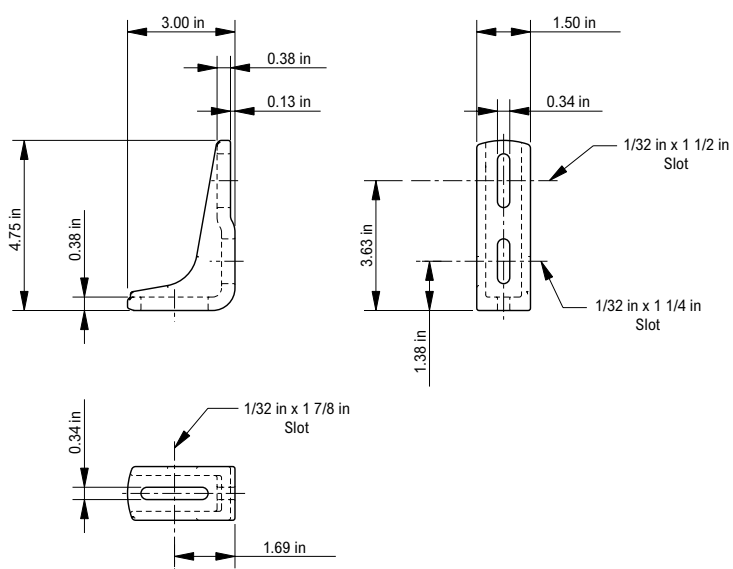
Bracket in Black Glass-Reinforced Nylon

## Offset Upper Conveyor Bracket Type B



Photo Shows Conveyor Bracket

## Drawing



## Product Information

Part Number	Length (in)	Width (in)	Slot Width (in)
114-672-1	4.75	3.00	$\frac{11}{32}$

## Additional Notes

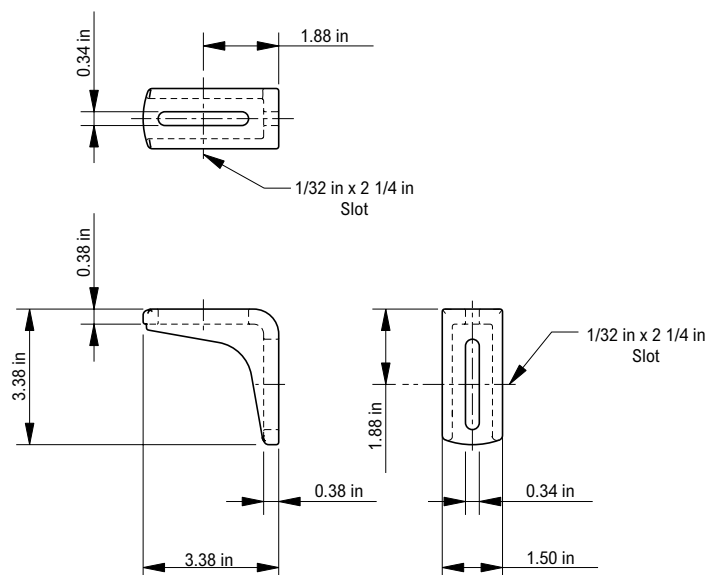
Bracket in Black Glass-Reinforced Nylon

## Lower Conveyor Bracket Type 3



Photo Shows Conveyor Bracket

## Drawing



## Product Information

Part Number	Length (in)	Width (in)	Slot Width (in)
114-673-1	3.38	3.38	$11/32$

## Additional Notes

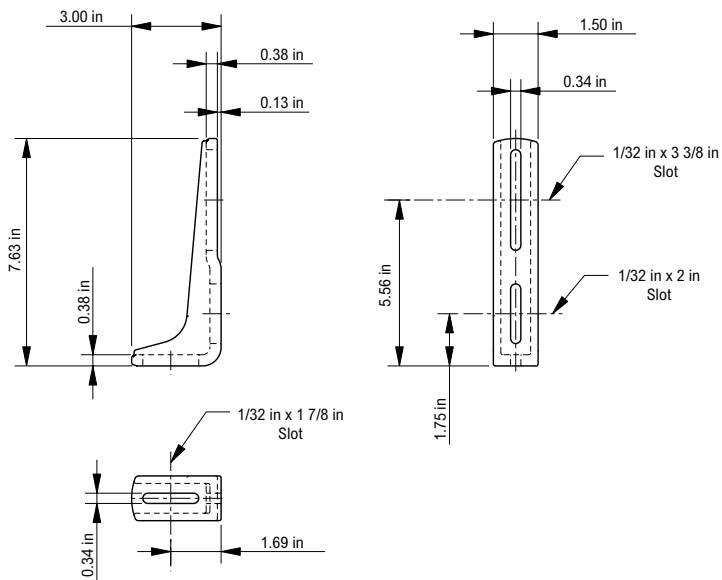
Bracket in Black Glass-Reinforced Nylon

## Offset Upper Conveyor Bracket Type A



Photo Shows Conveyor Bracket

## Drawing



## Product Information

Part Number	Length (in)	Width (in)	Slot Width (in)
114-674-1	7.63	3.00	$11/32$

## Additional Notes

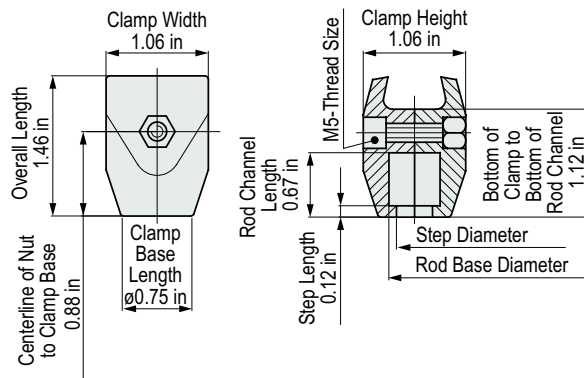
Bracket in Black Glass-Reinforced Nylon

PART 210 - Marbett® Guide Rail Clamp



Photo shows Pre-assembled Laser Etched Rail Clamp.

Drawing



Product Information

Part Number	Rod Base Diameter (in)	Step Diameter (in)	Assembled Item
210-59941	0.53	0.45	No
210-654791	0.53	0.45	Yes

Additional Notes

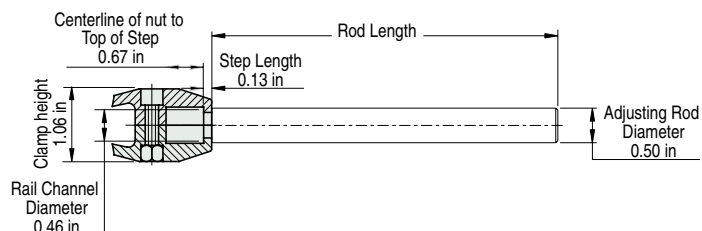
Fits all Marbett® guide rail assemblies  
Clamp in reinforced nylon (PA)

Marbett is a registered trademark of Rexnord Industries, LLC. All Rights Reserved.



**PART 210 - Marbett® Guide Rail Clamp Assembly**

Photo shows Pre-Assembled Rail Clamp with stainless steel Adjusting Rod.

**Drawing****Product Information**

Part Number	Adjusting Rod		Guide Rail Clamp Part Number	Adjusting rod part number
	Rod Diameter (in)	Rod Length (in)		
210-654671	1/2	3.00	210-59941	114-2308-1
210-654681	1/2	5.00	210-59941	114-2308-2

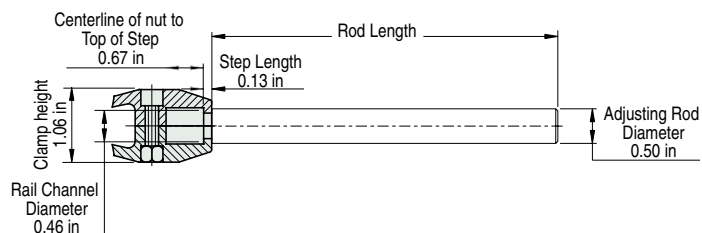
**Additional Notes**

Fits all Marbett® guide rail assemblies  
 Clamp in reinforced nylon (PA)  
 Adjusting rod in stainless steel; Footplate in reinforced polyamide (nylon)  
 All assemblies supplied with stainless steel nut

Marbett is a registered trademark of Rexnord Industries, LLC. All Rights Reserved.

**PART 210 - Marbett® Etched Guide Rail Clamp Assembly**

Photo shows Pre-Assembled Laser Etched Rail Clamp with stainless steel Adjusting Rod.

**Drawing****Product Information**

Part Number	Adjusting Rod Diameter [Nom]	Rod Length [Nom]	Guide Rail Clamp Part Number	Adjusting Rod Part Number
210-655811	1/2 in	5.00 in	210-59941	114-2694-1 114-2695-2

**Additional Notes**

Fits all Marbett® guide rail assemblies  
 Clamp in reinforced nylon (PA)  
 Adjusting rod in stainless steel; Footplate in reinforced polyamide (nylon)  
 All assemblies supplied with stainless steel nut

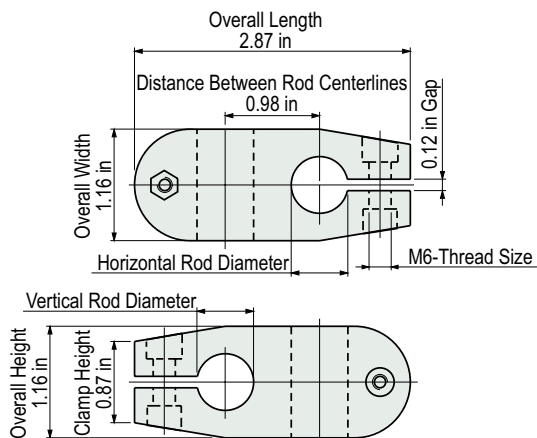
Marbett is a registered trademark of Rexnord Industries, LLC. All Rights Reserved.

## PART 174 - Marbett® Cross Clamp



Photo shows Cross Clamp in reinforced nylon with stainless steel hardware.

## Drawing



## Product Information

Part Number	Round Bore		Hex Bore	Square Bore
	Vertical Rod Diameter (in)	Horizontal Rod Diameter (in)	Rod Diameter (in)	Rod Diameter (in)
174-646481	1/2	1/2	-	-
174-671861	-	1/2	7/16	7/16

## Additional Notes

Cross clamp in reinforced nylon (PA)  
All hardware in stainless steel

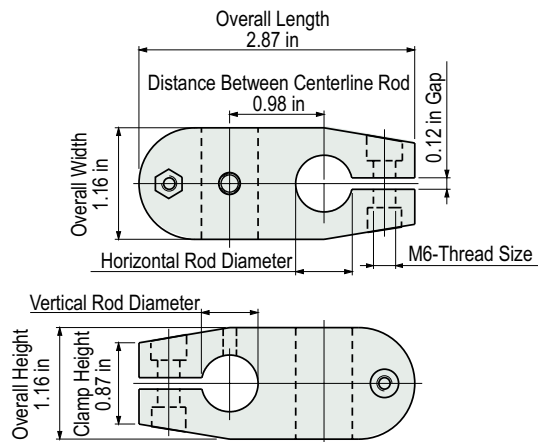
Marbett is a registered trademark of Rexnord Industries, LLC. All Rights Reserved.

## PART 174 - Marbett® Cross Clamp with setscrew



Photo shows Cross Clamp in reinforced nylon with stainless steel hardware.

## Drawing



## Product Information

Part Number	Round Bore		Hex Bore
	Vertical Rod Diameter (in)	Horizontal Rod Diameter (in)	Rod Diameter (in)
174-654661	1/2	1/2	-
174-655991	-	1/2	7/16

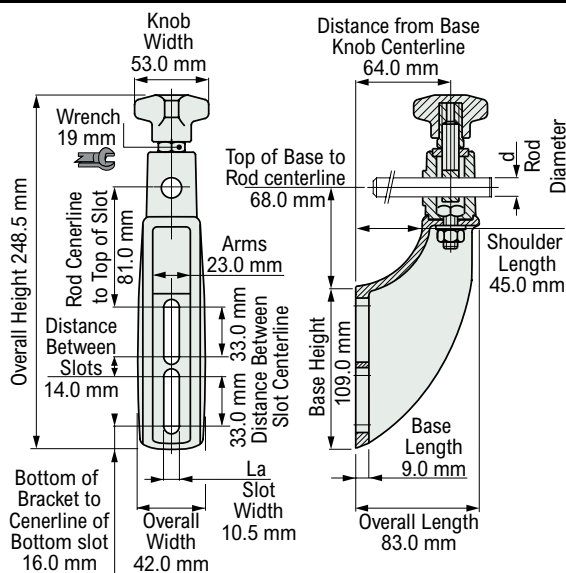
## Additional Notes

Cross clamp in reinforced nylon (PA)  
All hardware and setscrew in stainless steel  
Setscrew is only supplied in one bore

Marbett is a registered trademark of Rexnord Industries, LLC. All Rights Reserved.

**PART 637 - Marbett® Guide Rail Bracket**

Photo shows Guide Rail Bracket with bracket, rotating head, and knob in reinforced nylon.

**Drawing****Product Information**

Part Number	Rod Diameter (in)
637-648372	0.47
637-648392	0.63

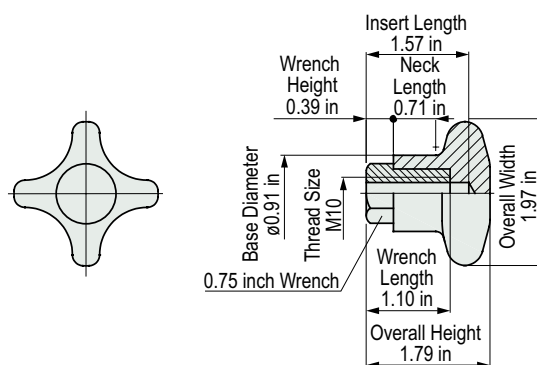
**Additional Notes**

Bracket, rotating head & knob in reinforced nylon (PA)  
 Eyebolt, nut, bolt & washers in stainless steel  
 Hex insert in knob in nickel plated brass

Marbett is a registered trademark of Rexnord Industries, LLC. All Rights Reserved.

**PART 182 - Marbett® Knob**

Photo shows Part #182-54911, Marbett Conveyor Component Knob in black reinforced nylon and nickel plated brass insert.

**Drawing****Product Information**

Part Number	Thread Size
182-54911	M10

**Additional Notes**

Knob in reinforced nylon (PA)  
 Metal insert in nickel plated brass

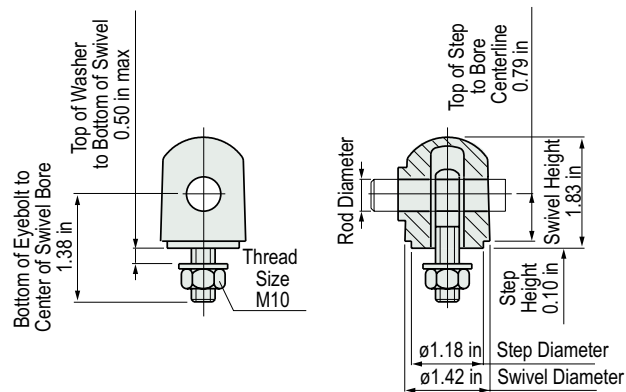
Marbett is a registered trademark of Rexnord Industries, LLC. All Rights Reserved.

## PART 255 - Marbett® Swivel Head



Photo shows a swivel head with 1/2 inch rod diameter.

## Drawing



## Product Information

Part Number	Rod Diameter (in)
255-685281	1/2

## Additional Notes

Swivel in reinforced nylon (PA)  
Eyebolt, washer, and nut in stainless steel

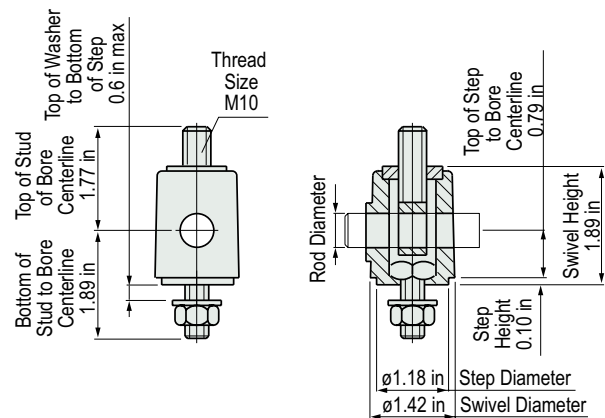
Marbett is a registered trademark of Rexnord Industries, LLC. All Rights Reserved.

## PART 256 - Marbett® Swivel



Photo shows a swivel with 1/2 inch rod diameter.

## Drawing



## Product Information

Part Number	Rod Diameter (in)
256-64561	1/2

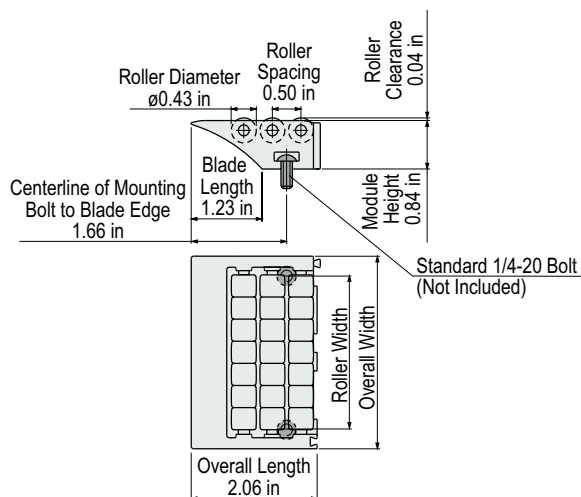
## Additional Notes

Swivel in reinforced nylon (PA)  
Eyebolt, nut, bolt, and washer in stainless steel  
Can be used with Knob 182

Marbett is a registered trademark of Rexnord Industries, LLC. All Rights Reserved.

**PART 567 - Marbett® Roller Transfer (Side)**

Photo shows a side module with nose roller transfer, 3.35 inches overall width, 2.06 inches overall length, with multiple small rollers.

**Drawing****Product Information**

Part Number	Roller Type	Roller Width (in)	Overall Width (in)
567-688792	Multiple Small Rollers	2.66	3.35
567-687382		3.82	4.53
567-688822	Single Roller	2.66	3.35
567-699002		3.82	4.53

**Additional Notes**

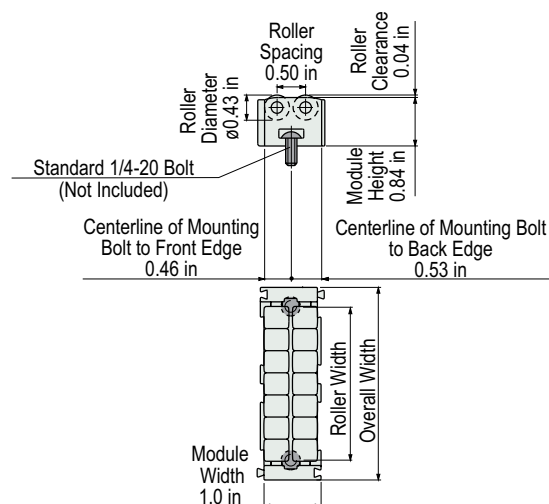
Frame in Rexnord® HP™ material  
 Multiple roller version uses rollers in Rexnord® HP™ material  
 Single roller version uses rollers in white polyethylene  
 Roller shafts are stainless steel

US Patent #6164435

Marbett is a registered trademark of Rexnord Industries, LLC. All Rights Reserved.

**PART 568 - Marbett® Roller Transfer (Center)**

Photo shows a center module roller transfer, 3.35 inches overall width, with multiple small rollers.

**Drawing****Product Information**

Part Number	Roller Type	Roller Width (in)	Overall Width (in)
568-605912	Multiple Small Rollers	2.66	3.35
568-687402		3.82	4.53
568-603402	Single Roller	2.66	3.35
568-699022		3.82	4.53

**Additional Notes**

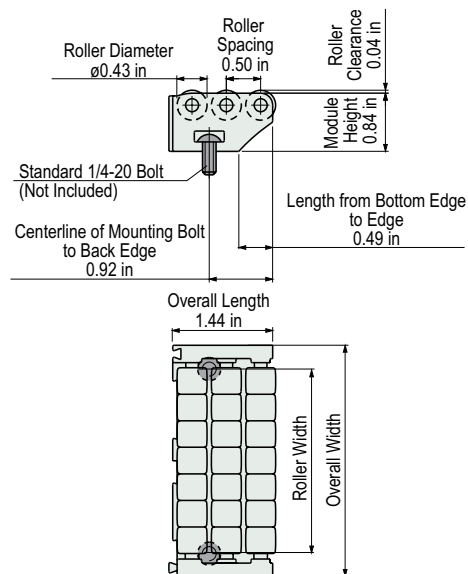
Frame in Rexnord® HP™ material  
 Multiple roller version uses rollers in Rexnord® HP™ material  
 Single roller version uses rollers in white polyethylene  
 Roller shafts are stainless steel

US Patent #6164436

Marbett is a registered trademark of Rexnord Industries, LLC. All Rights Reserved.

**PART 569 - Marbett® Roller Transfer (Side)**

Photo shows a side module without nose roller transfer, 3.35 inches overall width, with single rollers.

**Drawing****Product Information**

Part Number	Roller Type	Roller Width (in)	Overall Width (in)
569-605922	Multiple Small Rollers	2.66	3.35
569-687392		3.82	4.53
569-603412	Single Roller	2.66	3.35
569-699012		3.82	4.53

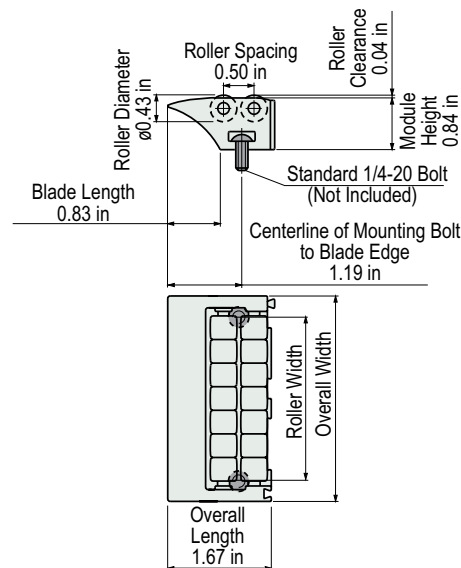
**Additional Notes**

Frame in Rexnord® HPT™ material  
 Multiple roller version uses rollers in Rexnord® HPT™ material  
 Single roller version uses rollers in white polyethylene  
 Roller shafts are stainless steel

Marbett is a registered trademark of Rexnord Industries, LLC. All Rights Reserved.

**PART 672 - Marbett® Roller Transfer (Side)**

Photo shows a side module with nose roller transfer, 3.35 inches overall width, 1.67 inches overall length, with multiple small rollers.

**Drawing****Product Information**

Part Number	Roller Type	Roller Width (in)	Overall Width (in)
672-687412	Multiple Small Rollers	2.66	3.35
672-687432		3.82	4.53
672-699032	Single Roller	2.66	3.35

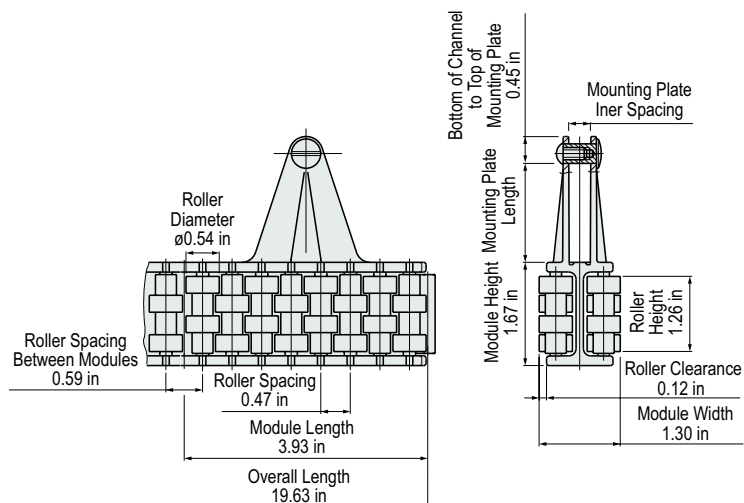
**Additional Notes**

Frame in Rexnord® HPT™ material  
 Multiple roller version uses rollers in Rexnord® HPT™ material  
 Single roller version uses rollers in white polyethylene  
 Roller shafts are stainless steel

Marbett is a registered trademark of Rexnord Industries, LLC. All Rights Reserved.

**PART 557 - Marbett® (Center) Roller Guide**

Photo shows a roller guide consisting of (5) 3.93 inch modules, totaling 19.63 inches in overall length.

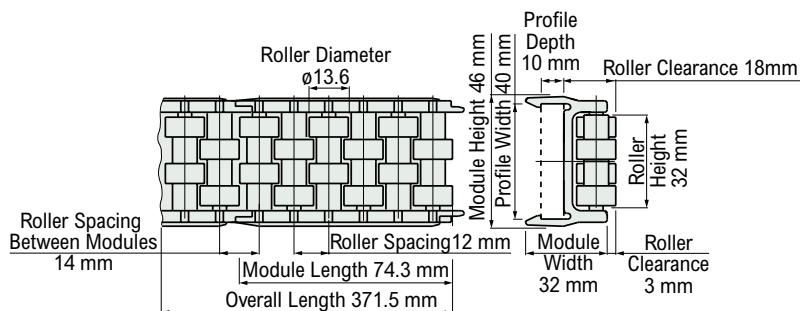
**Drawing****Product Information**

Part Number	Mounting Plate Length (in)	Mounting Plate Inner Spacing (in)
557-695991N	1.57	0.31

**Additional Notes**

Frame in Black Acetal (POM)  
 Rollers in White Acetal (POM)  
 Mounting screw in Stainless Steel  
 Each part number consists of (5) 3.93 in modules

Marbett is a registered trademark of Rexnord Industries, LLC. All Rights Reserved.

**PART 580 - Marbett® (Side) Roller Guide****Drawing****Product Information**

Part Number	Profile Width (in)	Profile Depth (in)	Module Height (in)
580-611772	1.57	0.39	1.81

**Additional Notes**

Frame in Black Acetal (POM)  
 Rollers in White Acetal (POM)  
 Each part number consists of (5) 2.93 in modules

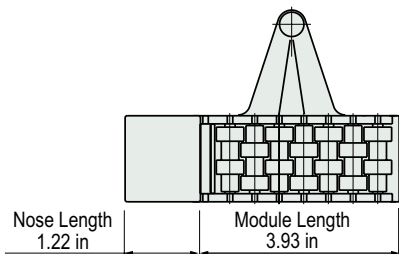
Marbett is a registered trademark of Rexnord Industries, LLC. All Rights Reserved.

PART 570 - Marbett® Roller Guide



Photo shows a roller guide module with nose.

Drawing



Product Information

Part Number

570-601162N

Additional Notes

Frame in black acetal (POM)  
Rollers in white acetal (POM)  
Mounting screw in stainless steel  
Threaded bushing in plated brass  
For use with part 557-695991N

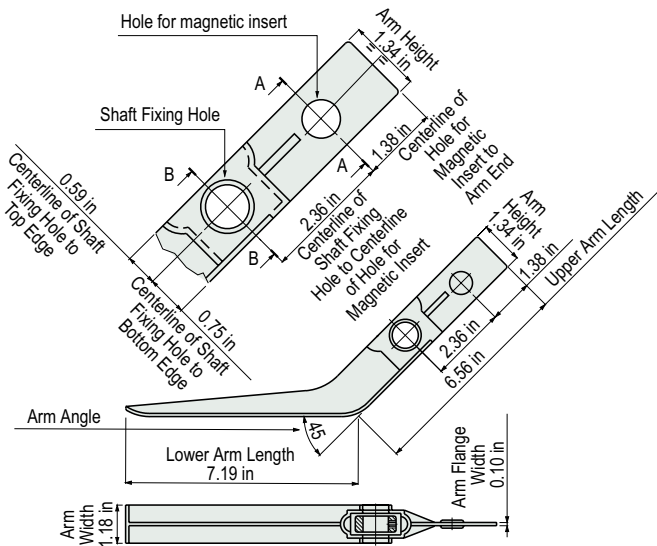
Marbett is a registered trademark of Rexnord Industries, LLC. All Rights Reserved.

PART 518 - Marbett® Control Contact Lever



Photo shows a control contact lever with hole and metal insert.

Drawing



Product Information

Part Number

518-642951N

Additional Notes

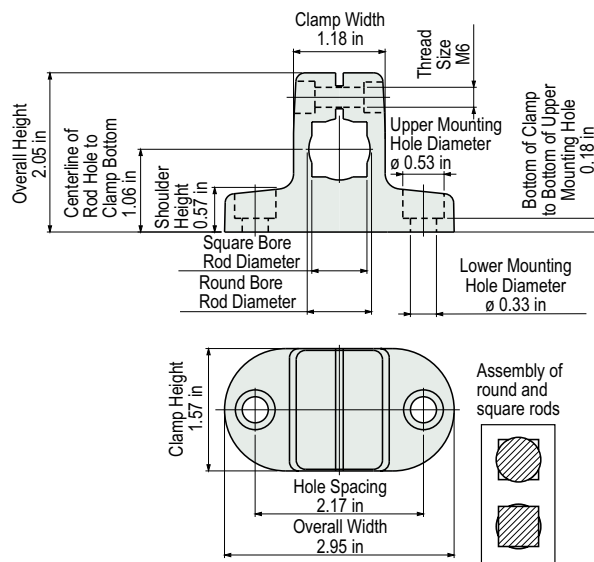
Lever in black polypropylene  
Insert (for magnetic sensor) in stainless steel

Marbett is a registered trademark of Rexnord Industries, LLC. All Rights Reserved.



**PART 595 - Marbett® T-Clamp**

Photo shows T-Clamp in reinforced nylon with stainless steel bolt.

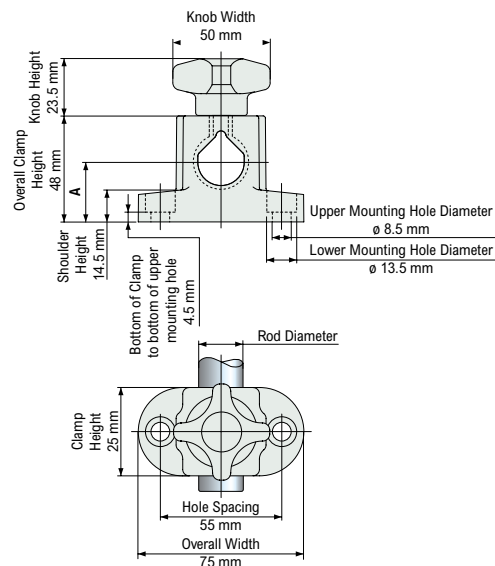
**Drawing****Product Information**

Part Number	Round Bore	Square Bore
	Rod Diameter (in)	Rod Diameter (in)
595-610452	0.79	0.71

**Additional Notes**

Clamp in reinforced polyamide (nylon)  
Supplied with stainless steel bolt

Marbett is a registered trademark of Rexnord Industries, LLC. All Rights Reserved.

**PART 763 - Marbett® T-Clamp****Drawing****Product Information**

Part Number	Rod Diameter (in)
763-610633	0.79

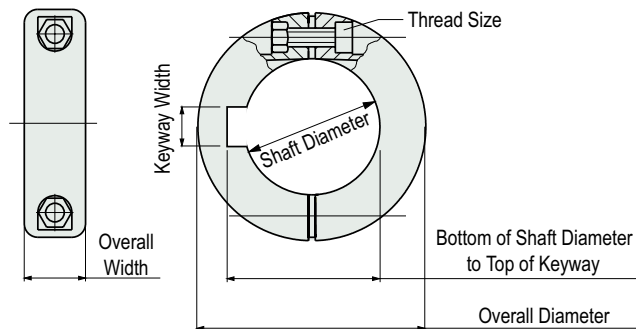
**Additional Notes**

Clamp and rod in reinforced polyamide PA FV (black)  
Threaded insert in nickel plated brass  
Nut, washer and eyebolt in austenitic stainless steel  
Max. recommended tightening torque: 4 Kgm (28.9 ft. lbs.)

Marbett is a registered trademark of Rexnord Industries, LLC. All Rights Reserved.

**PART 612 - Marbett® Split Shaft Collar with Round Bore**

Photo shows part number a split shaft collar with 1 inch round bore, with keyway.

**Drawing****Product Information**

Part Number	Shaft Diameter (in)	Overall Diameter (in)	Overall Width (in)	Thread Size	Keyway Width (in)	Distance From Bottom of Shaft Diameter to Top of Keyway (in)
<b>Without Keyway</b>						
612-655072	1/2	1.18 in	0.46	M4	-	-
612-655092	5/8	1.38 in	0.46	M4	-	-
612-655102	3/4	1.57 in	0.55	M4	-	-
<b>With Keyway</b>						
612-655112	1	1.77 in	0.55	M4	0.25	1.13
612-655122	1 1/4	1.97 in	0.63	M4	0.25	1.38
612-655132	1 1/2	2.50 in	0.71	M5	0.38	1.68

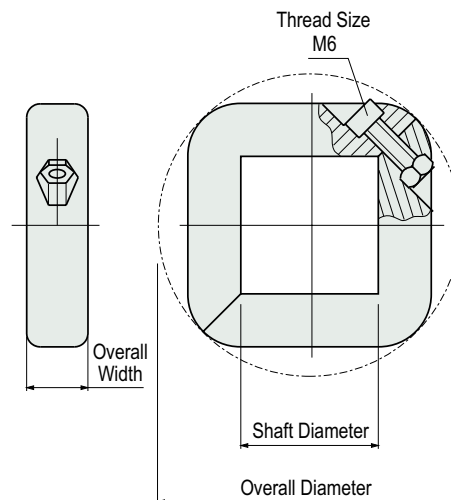
**Additional Notes**

Collar in reinforced polyamide (PA)  
Hardware in stainless steel  
Maximum recommended torque: 26 in-lbs

Marbett is a registered trademark of Rexnord Industries, LLC. All Rights Reserved.

**PART 612 - Split Shaft Collar with Square Bore**

Photo shows a split shaft collar with 1 1/2 inch square bore.

**Drawing****Product Information**

Part Number	Shaft Diameter (in)	Overall Width (in)	Overall Diameter (in)
612-692942	1 1/2	0.71	3.46
612-692972	2 1/2	0.71	4.57

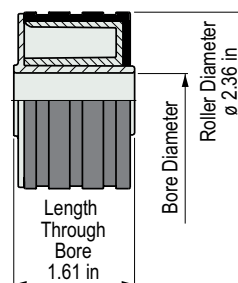
**Additional Notes**

Collar in reinforced polyamide (PA)  
Hardware in stainless steel  
Maximum recommended torque: 26 in-lbs

Marbett is a registered trademark of Rexnord Industries, LLC. All Rights Reserved.

**PART 613 - Marbett® Bi-material Return Roller**

Photo shows a bi-material return roller with 1/2 inch shaft diameter, 1.61 inches length through bore, without flange.

**Drawing****Product Information**

Part Number	Shaft Diameter (in)	Bore Diameter (in)
613-632472	1/2	0.52
613-615352	5/8	0.65
613-635142	3/4	0.77

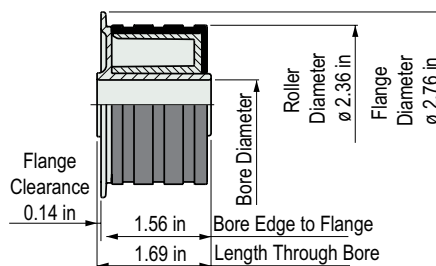
**Additional Notes**

Roller and bushing in white acetal (POM)  
Outer surface in grey rubber

Marbett is a registered trademark of Rexnord Industries, LLC. All Rights Reserved.

**PART 614 - Marbett® Bi-material Return Roller**

Photo shows a bi-material return roller with 1/2 inch shaft diameter, 1.69 inches length through bore, with flange.

**Drawing****Product Information**

Part Number	Shaft Diameter (in)	Bore Diameter (in)
614-632482	1/2	0.52
614-615392	5/8	0.65
614-635152	3/4	0.77

**Additional Notes**

Roller and bushing in white acetal (POM)  
Outer surface in grey rubber

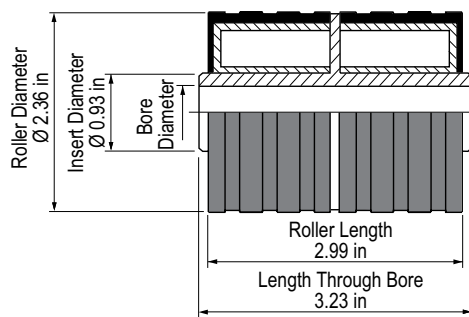
Marbett is a registered trademark of Rexnord Industries, LLC. All Rights Reserved.

## PART 657 - Marbett® Bi-material Return Roller



Photo shows a bi-material return roller with 1/2 inch shaft diameter, 3.23 inches length through bore, without flange.

## Drawing



## Product Information

Part Number	Shaft Diameter (in)	Bore Diameter (in)
657-656982	1/2	0.52
657-657002	5/8	0.65
657-656692	3/4	0.77

## Additional Notes

Roller and bushing in white acetal (POM)  
Outer surface in grey rubber

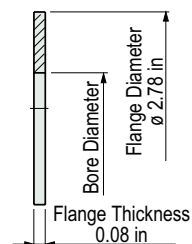
Marbett is a registered trademark of Rexnord Industries, LLC. All Rights Reserved.

## PART 555 - Marbett® Guide Flange



Photo shows Guide Flange internally lubricated black nylon.

## Drawing



## Product Information

Part Number	Shaft Diameter (in)	Bore Diameter (in)
555-632702	1/2	0.51

## Additional Notes

Internally lubricated black nylon (PA)  
Can be applied to rollers (Part 613)

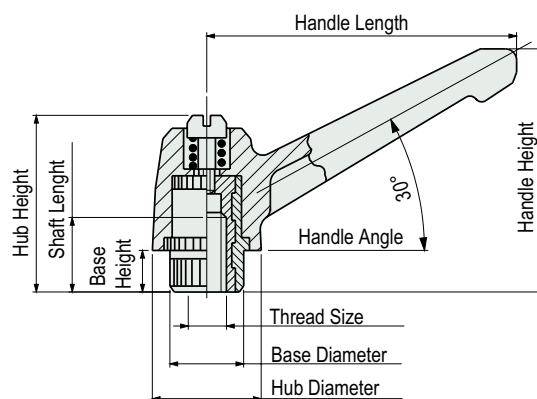
Marbett is a registered trademark of Rexnord Industries, LLC. All Rights Reserved.

## PART 302 - Marbett® Ratchet Handle



Photo shows a ratchet handle with 5/16-18 threaded insert.

## Drawing



## Product Information

Part Number	Thread Size	Handle Length (in)	Height				Diameter	
			Handle (in)	Base (in)	Shaft (in)	Hub (in)	Base (in)	Hub (in)
302-60852	5/16-18	2.17	2.01	0.39	0.5500	1.46	0.59	0.79
302-60952	3/8-16	3.11	2.64	0.43	0.7900	1.89	0.79	1.10

## Additional Notes

Handle in reinforced nylon (PA)  
Threaded insert in nickel plated brass

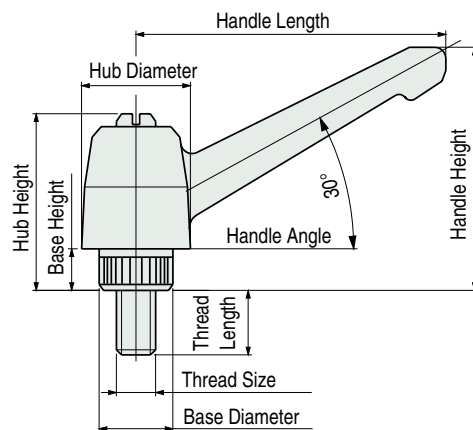
Marbett is a registered trademark of Rexnord Industries, LLC. All Rights Reserved.

## PART 303 - Marbett® Ratchet Handle



Photo shows a ratchet handle with an M6 threaded spindle.

## Drawing



## Product Information

Part Number	Thread Size	Handle Length	Height				Diameter	
			Handle	Base	Shaft	Hub	Base	Hub
303-60912	1/4"-20	1.57 in	1.57 in	0.28 in	-	1.26 in	0.45 in	0.63 in
303-60922	M6	1.57 in	1.57 in	0.28 in	-	1.26 in	0.45 in	0.63 in

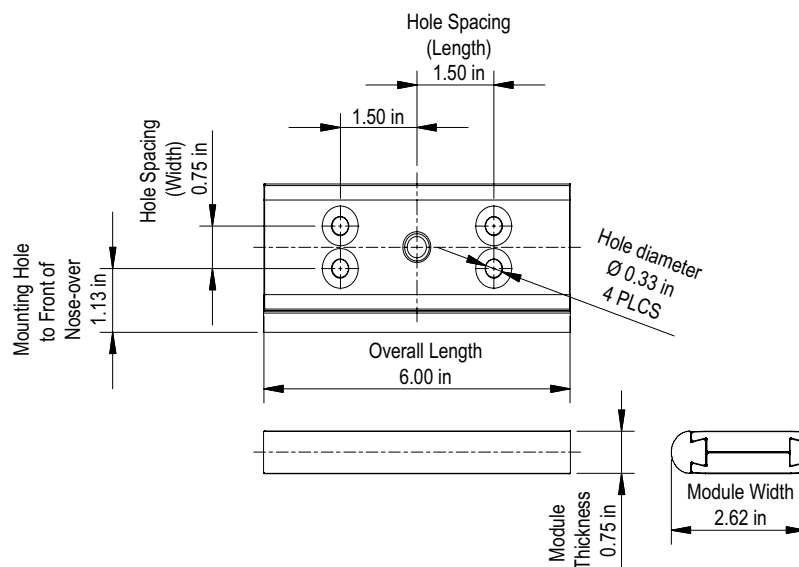
## Additional Notes

Handle in reinforced nylon (PA)  
Spindle in stainless steel

Marbett is a registered trademark of Rexnord Industries, LLC. All Rights Reserved.

**PART 905 - Marbett® Modular Nose-Over Bar (Standard)**

Photo shows a standard profile nose-over bar without hardware.

**Drawing****Product Information**

Part Number	Module	
	Width	Thickness
905-655711	2.62 in	0.75 in

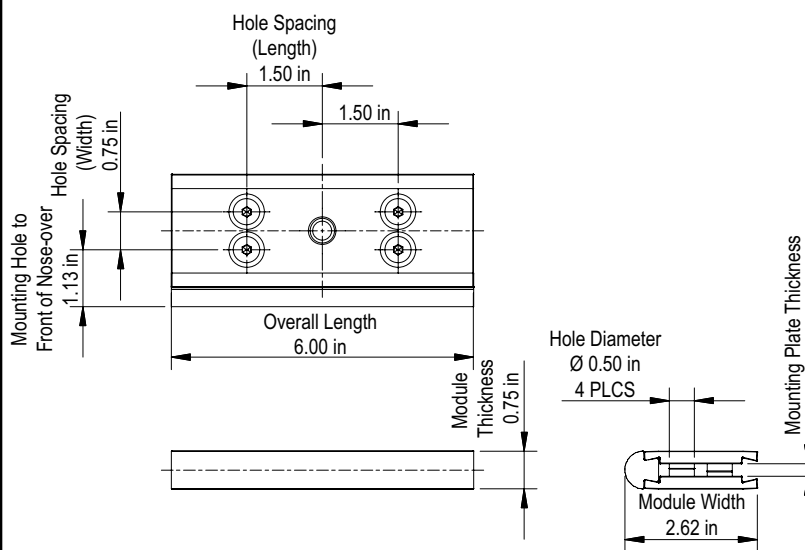
**Additional Notes**

Base in reinforced nylon (PA)  
 Nosebar in moly filled nylon  
 Uses standard 5/16 in (M8) flat head screws (not included)

Marbett is a registered trademark of Rexnord Industries, LLC. All Rights Reserved.

**PART 905 - Marbett® Modular Nose-Over Bar (Low Profile)**

Photo shows a low profile nose-over bar, 1/4 inch mounting plate thickness, 1/4-20 hardware.

**Drawing****Product Information**

Part Number	Mounting Plate Thickness (in)	Hardware Size
905-655721	0.31	M6
905-655731	0.25	1/4-20

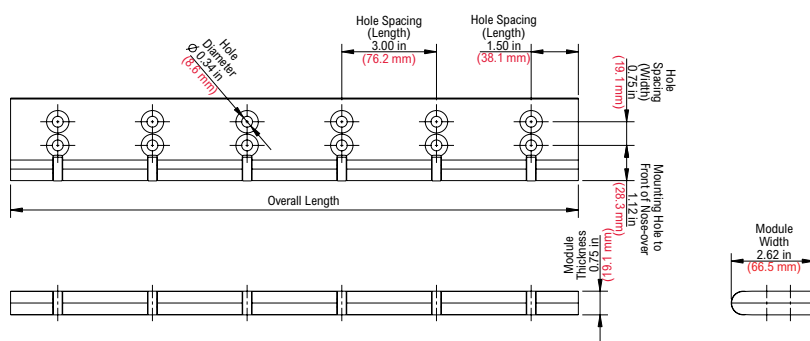
**Additional Notes**

Base in reinforced nylon (PA)  
 Nosebar in moly filled nylon  
 Screws in stainless steel; Threaded insert in brass

Marbett is a registered trademark of Rexnord Industries, LLC. All Rights Reserved.

**PART 905 - Marbett® Modular Nose-Over Bar (Dynamic)**

Photo shows Marbett Dynamic Nose-over Bar.

**Drawing****Product Information**

Part Number	Module		
	Thickness (in)	Width (in)	Length (in)
905-656231	0.75	2.62	18
905-656241	0.75	2.62	24

**Additional Notes**

Base is UHMWPEE  
 Uses standard 5/16 in (M8) flat head screws (not included)

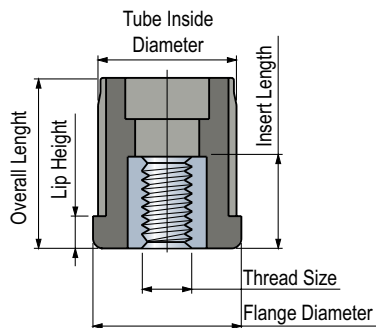
Marbett is a registered trademark of Rexnord Industries, LLC. All Rights Reserved.

## PART 180 - Marbett® Tube End



Photo shows a tube end for round 2 inch tubing,  
3/4-10 threaded insert.

## Drawing



## Product Information

Part Number	Tube		Pipe Wall Thickness (in)	Thread Size	Flange Diameter (in)	Height			Maximum Static Load (lb)
	OD (in)	ID (in)				Lip (in)	Overall (in)	Insert (in)	
180-655741	2.00	1.72	0.109	3/4-10	1.97	0.35	2.20 in	1.18 in	1,800

## Additional Notes

Bushing in reinforced nylon (PA)  
Threaded insert in nickel plated brass

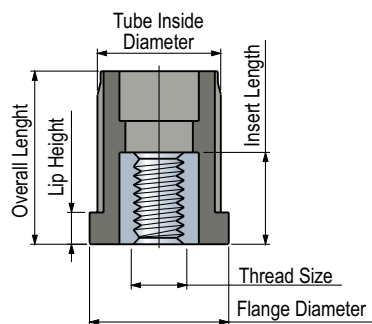
Marbett is a registered trademark of Rexnord Industries, LLC. All Rights Reserved.

## PART 224 - Marbett® Tube End



Photo shows a tube end for square 2 inch tubing,  
5/8-11 threaded insert.

## Drawing



## Product Information

Part Number	Tube		Pipe Wall Thickness (in)	Thread Size	Flange Diameter (in)	Height			Maximum Static Load (lb)
	OD (in)	ID (in)				Lip (in)	Overall (in)	Insert (in)	
224-59241	2.00	1.80	0.109	3/4-10	1.91	0.39	2.17	1.18	1,800
224-59261	2.00	1.80	0.109	5/8-11	1.91	0.39	2.17	0.94	1,125

## Additional Notes

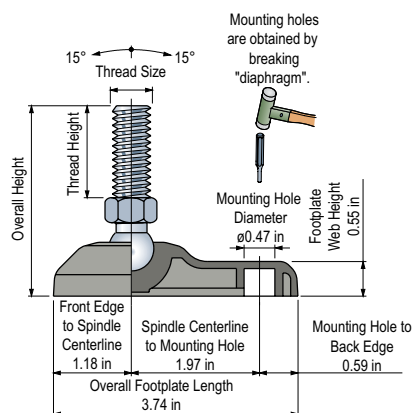
Bushing in reinforced nylon (PA)  
Threaded insert in nickel plated brass

Marbett is a registered trademark of Rexnord Industries, LLC. All Rights Reserved.



**PART 94 - Marbett® Teardrop Leveler**

Photo shows Teardrop Leveler with stainless steel nut and footplate in reinforced nylon.

**Drawing****Product Information**

Part Number	Thread Size	Overall Height (in)	Thread Height (in)	Spindle Type
94-655081	3/4-10	7.70	5.91	6b
94-655101	3/4-10	7.70	5.91	6
94-655121	3/4-10	10.70	9.02	6
94-656071	M20	7.41	6.06	6b

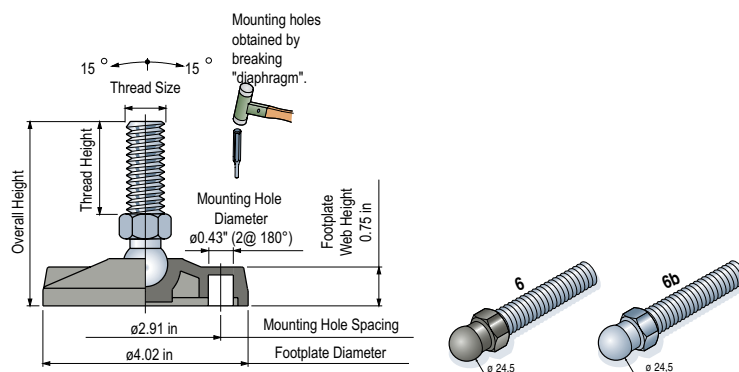
**Additional Notes**

Footplate in reinforced nylon (PA)  
 All assemblies supplied with stainless steel nut  
 Anti-slip pad also available. Code no: 0-696171  
 Material: Rubber (black), 70 shore

Marbett is a registered trademark of Rexnord Industries, Inc. All Rights Reserved.

**PART 133 - Marbett® Leveler**

Photo shows Leveler with stainless steel nut and footplate in reinforced nylon.

**Drawing****Product Information**

Part Number	Thread Size	Overall Height (in)	Thread Height (in)	Spindle Type
133-636882	3/4-10	7.72	7.33	6b
133-64795	3/4-10	10.72	9.02	6
133-656081	M20	7.41	6.06	6b
133-67972	5/8-11	7.72	5.91	6
133-67982	3/4-10	7.72	5.91	6

**Additional Notes**

Footplate in reinforced nylon (PA)  
 All assemblies supplied with stainless steel nut  
 Anti-slip pad also available. Code no: 0-630052  
 Material: Rubber (black), 70 shore

Marbett is a registered trademark of Rexnord Industries, LLC. All Rights Reserved.

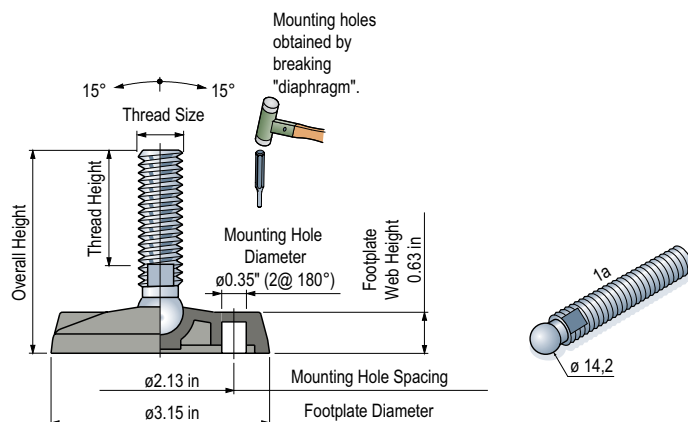
Marbett is a registered trademark of Rexnord Industries, LLC. All Rights Reserved.

## PART 323 - Marbett® Leveler



Photo shows Leveler with stainless steel nut and footplate in reinforced nylon.

## Drawing



## Product Information

Part Number	Thread Size	Overall Height (in)	Thread Height (in)	Spindle Type
323-650161	3/4-10	6.89	5.67	1a
323-655761	3/4-10	4.14	2.88	1a

## Additional Notes

Footplate in reinforced nylon (PA)  
 All assemblies supplied with stainless steel nut  
 Anti-Slip pad also available Code no.: 0-61632  
 Material: Rubber (black), 70 Shore

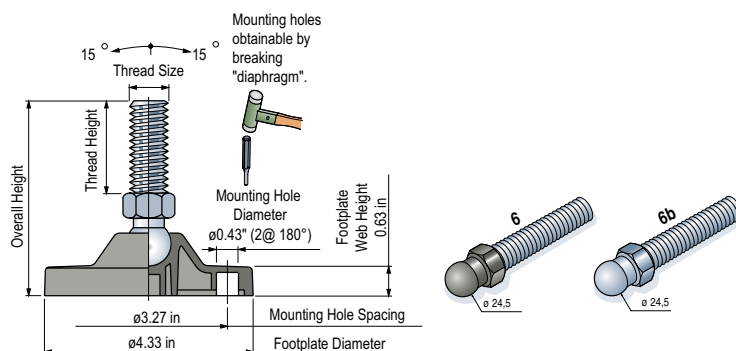
Marbett is a registered trademark of Rexnord Industries, Inc. All Rights Reserved.

## PART 479 - Marbett® Leveler



Photo shows Leveler with stainless steel nut and footplate in reinforced nylon.

## Drawing



## Product Information

Part Number	Thread Size	Overall Height (in)	Thread Height (in)	Spindle Type
479-651331	3/4-10	8.18	5.90	6
479-653131	5/8-11	8.18	5.90	6
479-653691	3/4-10	11.19	9.02	6
479-655941	3/4-10	8.18	5.90	6b

## Additional Notes

Footplate in reinforced nylon (PA)  
 All assemblies supplied with stainless steel nut

Marbett is a registered trademark of Rexnord Industries, LLC. All Rights Reserved.

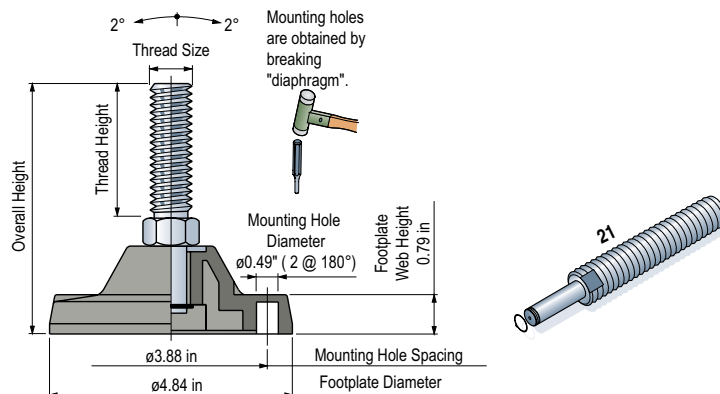
Marbett is a registered trademark of Rexnord Industries, LLC. All Rights Reserved.

## PART 169 - Marbett® Leveler



Photo shows Leveler with footplate in reinforced nylon.

## Drawing



## Product Information

Spindle Material	Part Number	Height		Thread Size	Spindle Type
		Overall (in)	Thread (in)		
Stainless Steel	169-651741	7.60	5.44	1-8	21
Zinc Plated	169-651821	7.60	5.44	1-8	21

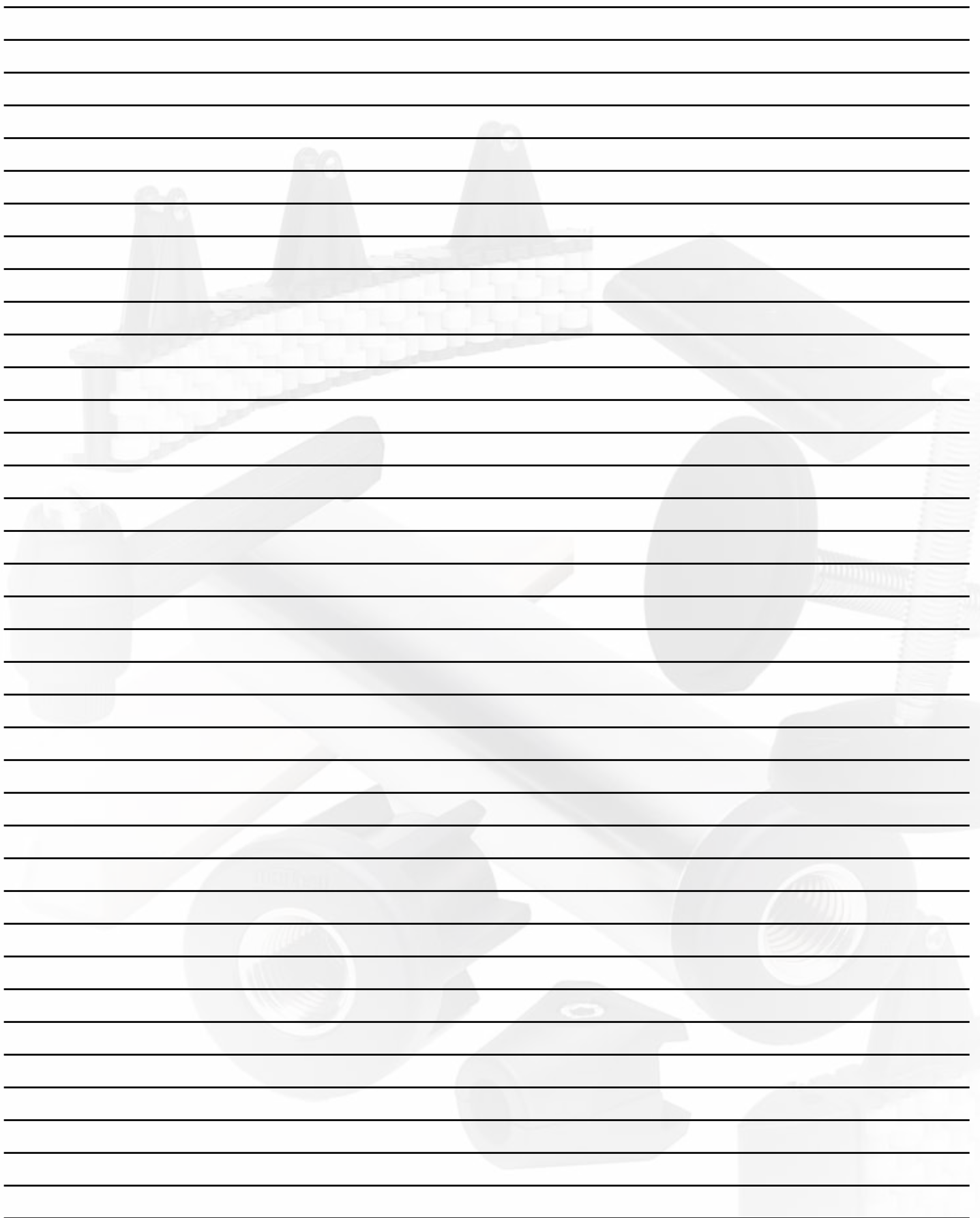
## Additional Notes

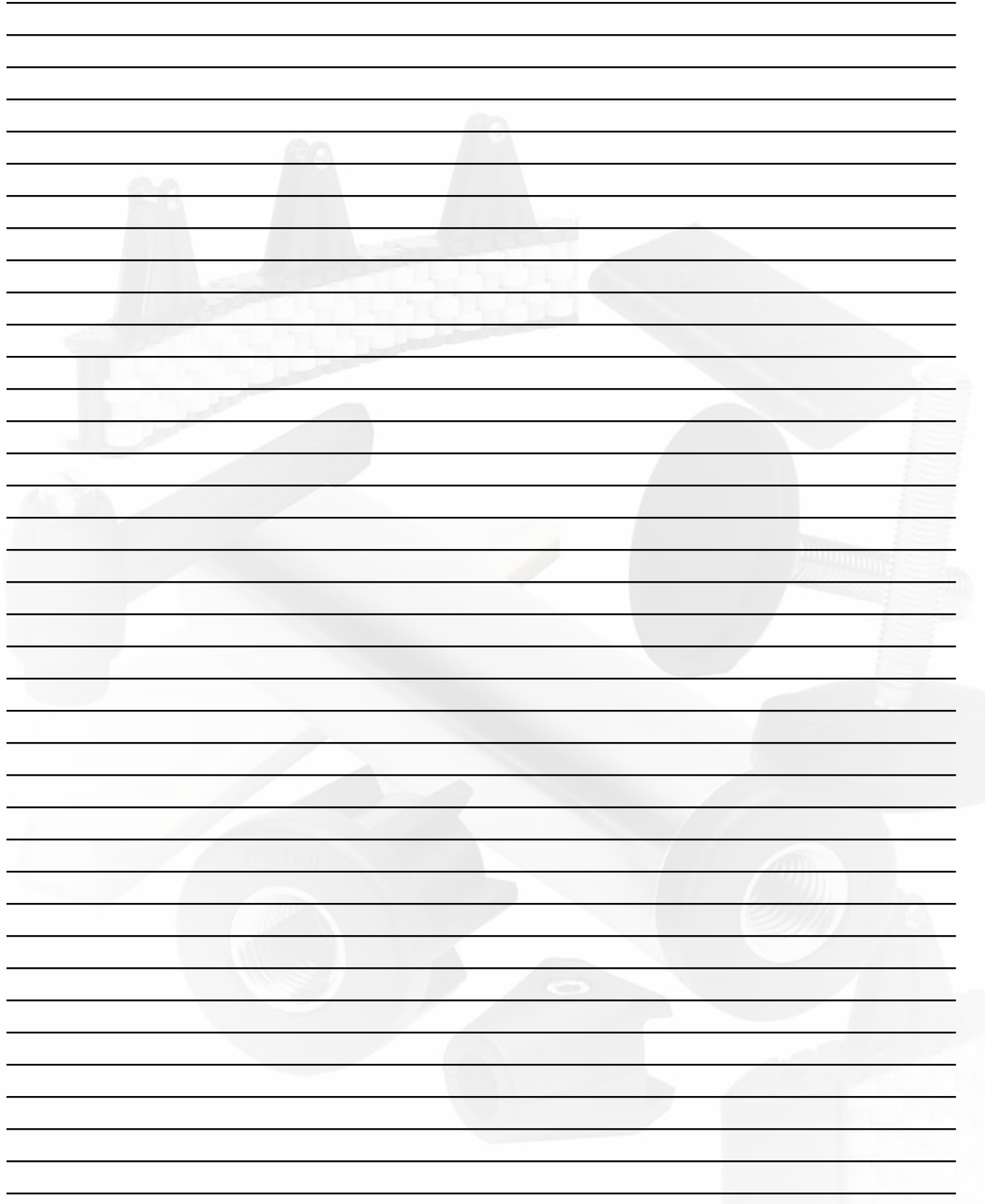
Footplate in reinforced nylon (PA)  
 All assemblies supplied with stainless steel nut  
 Anti-slip pad also available. Code no: 0-61653  
 Material: Rubber (black), 70 shore

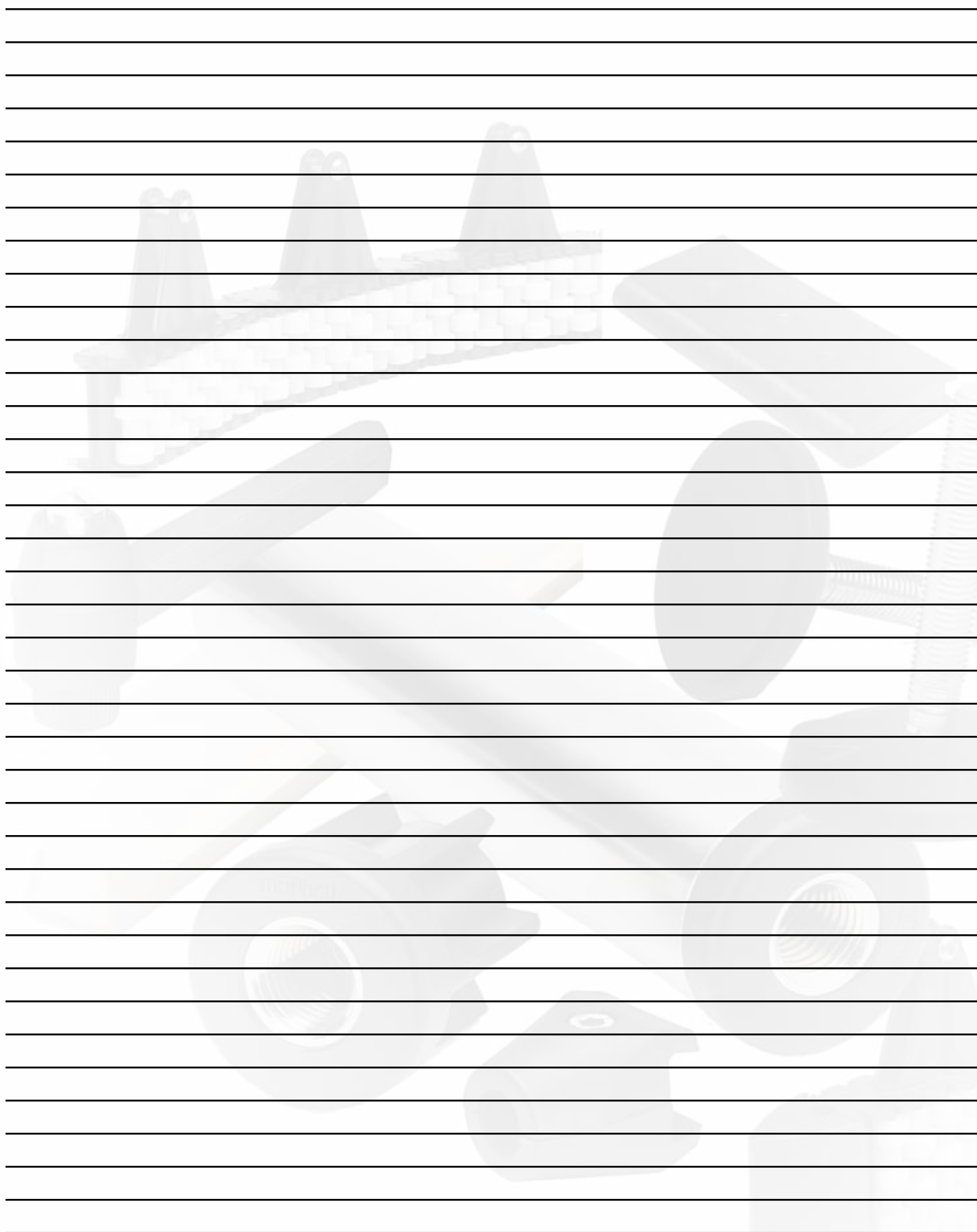
Marbett is a registered trademark of Rexnord Industries, Inc. All Rights Reserved.

# MARBETT® PRODUCT PORTFOLIO INDEX

Part	Page	Part	Page
Part 94	33	Part 612	26
Part 114	10	Part 613	27
Part 133	33	Part 614	27
Part 169	35	Part 672	20
Part 174	18	Part 657	28
Part 180	32	Part 902	9
Part 182	19	Part 903	9
Part 210	16-17	Part 905	30-31
Part 224	32	<b>GUIDE RAILS</b>	
Part 255	20	Round	3
Part 256	20	Convex	3
Part 257	14	Flat	4
Part 302	29	1" Flat	4
Part 303	29	Neck	6
Part 323	34	1" Tee	6
Part 367	5	1-1/4" Tee	5
Part 369	9	1.6" Tee	7
Part 371	9	2-1/4" Tee	7
Part 479	34	Edge	8
Part 518	24	Tab Tee	8
Part 555	28	<b>L BRACKETS</b>	
Part 557	23	Upper	13
Part 562	23	Lower	13
Part 567	21	Lower Type 2	14
Part 568	21	Offset Upper Type B	14
Part 569	22	Lower Type 3	15
Part 570	24	Offset Upper Type A	15
Part 595	25		







# World Class Customer Service

For more than 100 years, the dedicated people of Rexnord have delivered excellence in quality and service to our customers around the globe. Rexnord is a trusted name when it comes to providing skillfully engineered products that improve productivity and efficiency for industrial applications worldwide. We are committed to exceeding customer expectations in every area of our business: product design, application engineering, operations, and customer service.

Because of our customer focus, we are able to thoroughly understand the needs of your business and have the resources available to work closely with you to reduce maintenance costs, eliminate redundant inventories and prevent equipment down time.

Rexnord represents the most comprehensive portfolio of power transmission and conveying components in the world with the brands you know and trust.

Rexnord and Marbett are registered trademarks, and HP, ViseSplice, and ViseClamp are trademarks of Rexnord Industries, LLC. All rights reserved.

## WORLDWIDE CUSTOMER SERVICE

### AUSTRALIA

Rexnord Australia Pty Ltd  
Picton, New South Wales  
Phone: 61-2-4677-3811  
Fax: 61-2-4677-3812

### BRAZIL

Rexnord Correntes Ltda.  
Sao Leopoldo - RS  
Phone: 55-51-3579-8022  
Fax: 55-51-3579-8029

### CANADA

Rexnord Canada Ltd.  
Scarborough, Ontario  
Phone: 1-416-297-6868  
Fax: 1-416-297-6873

### CHINA

Rexnord Conveyor Products  
(Wuxi) Co. Ltd.  
Shanghai  
Phone: 86-21-62701942  
Fax: 86-21-627019433

### FLATTOP EUROPE

Rexnord FlatTop Europe b.v.  
's-Gravenzande, The Netherlands  
Phone: 31-174-445-111  
Fax: 31-174-445-222

After Hours/Emergency Phone:  
31-174-445-112

Rexnord Marbett®, S.r.l.  
Correggio (RE), Italy  
Phone: 39-0522-639333  
Fax: 39-0522-637778

RMCC Deutschland Kette GmbH  
Aßlar-Werdorf, Germany  
Phone: 49-6443-83140  
Fax: 49-6443-831420

Rexnord FlatTop France  
Orly Cedex  
Phone: 33-1-4173-4220  
Fax: 33-1-4173-4229

### MEXICO

Rexnord FlatTop  
Toll-Free Phone: 001-888-808-7787  
Fax: 1-262-376-4720

### UNITED STATES

Customer Service  
Phone: 1-866-REXNORD  
(1-866-739-6673)  
Fax: 1-614-675-1898  
E-mail: [rexnordcs\(state\)@rexnord.com](mailto:rexnordcs(state)@rexnord.com)  
Example: [rexnordcs\(ohio\)@rexnord.com](mailto:rexnordcs(ohio)@rexnord.com)

Rexnord FlatTop North America  
Grafton, Wisconsin  
Phone: 1-262-376-4700  
Fax: 1-262-376-4720

Rexnord International - Power Transmission  
Milwaukee, Wisconsin  
Phone: 1-414-643-2366  
Fax: 1-414-643-3222  
[international2@rexnord.com](mailto:international2@rexnord.com)

### ALL COUNTRIES NOT LISTED

Rexnord FlatTop Europe  
's-Gravenzande, The Netherlands  
Phone: 31-174-445-111  
Fax: 31-174-445-222

After Hours/Emergency Phone:  
31-174-445-112

