



SERVICE INSTRUCTIONS
HI-LO REFILL KITS
MODULAR TYPE UNITS

385787
385788-A1
385788-B1
385800

DESCRIPTION

- 385800** This Hi-Lo Refill Switch is designed to incorporate High and Low Level Warning circuits into existing Oil-Mist units without this provision. It also provides for an Automatic Refill function when used with proper installation components. (See page 2 for complete description.)
- 385787** The 385787 Hi-Lo Refill Switch Kit adds necessary installation hardware, e.g., nipples, filter, conduit, etc., to the basic 385800 Switch Assembly (included in this Kit) and completes the Automatic Refill system. User need only supply Solenoid Valve for operation. (See Parts List, pages 3 and 4.)
- 385788-A1** Adds 383647-A1 Solenoid Valve (120 V.) to the 385787 Kit for complete installation fittings needed for Automatic Refill capability. (See "INSTALLATION", page 1, and Figure 1.
- 385788-B1** Same as above, but with higher-voltage 383647 Solenoid Valve (240 V.) in place of 383647-1 (120 V.) unit. (See "INSTALLATION", page 1, and Figure 1.

INSTRUCTIONS FOR
385787 HI-LO REFILL SWITCH KIT (MODULAR TYPE)

NOTE: See Detail Drawing, Figure 2, and "ASSEMBLY", page 2, for 385800 Hi-Lo Refill Switch. See Figure 1 for 385787 Hi-Lo Refill Switch Kit Installation.

INSTALLATION OF 385787 KIT

1. Close Air Supply Valve (not part of Oil-Mist Unit).
 2. Remove Reservoir drain plug and drain Unit. Clean plug and set aside.
 3. Remove four Socket Head Cap Screws securing cover plate on Reservoir. Remove and discard plate but retain Gasket on opening and four Screws.
 4. Install assembled 385800 Switch Assembly, less Cover Assembly [14], in Reservoir (see page 2 for complete installation of Switch).
 5. Seat 385800 Switch Assembly properly on Gasket over Reservoir opening, and secure with four Socket Head Cap Screws previously removed.
 6. Attach 90° Conduit Connector [9] to the front access opening of the 385800 Switch Assembly and thread the Refill Switch leads through the elbow of the Connector, Ferrule [10], and Gasket [11]. (Refer to Wiring Diagram, page 4, for connection of leads.)
 7. Attach desired conduit connector to the rear access opening of the Switch Assembly and thread remaining Switch leads through. Make needed connections. (These installation components are not supplied with the Kit.)
 8. Replace Switch Cover Assembly [14] and secure with Screws [12] and Lockwashers [13].
 9. Insert Nipple [3] in drain plug opening and tighten securely.
 10. Attach Reducing Tee [5] to Nipple [3].
- NOTE:** Reducing Tee [5] serves as both Oil Inlet and Reservoir Drain Opening and Fitting. 3/8" NPT leg of attached Reducing Tee must be fitted UP in relation to Reservoir.
11. Insert Reservoir drain plug into bottom leg of Reducing Tee [5] and tighten.
 12. Insert Adapter [1] in upper leg of Reducing Tee [5] and tighten.
- (Cont'd. on Page 2)

Alemite Corporation
167 Roweland Drive, Johnson City, Tennessee 37601
www.alemite.com

Copyright © 2003 by Alemite Corporation

397583

This document contains confidential information that is the property of Alemite Corporation and is not to be copied, used, or disclosed to others without express written permission.

SER 385787 (10-03)

INSTALLATION OF 385787 KIT (Cont'd.)

13. Attach Nipple [4] to Adapter [1] and secure.
14. Attach 383647-1 (120 V.) or 383647 (240 V.) Solenoid Valve to Nipple [4].

NOTE: Electrical Conduit Connector Fitting of Solenoid Valve must be fitted UP in relation to Reservoir.
15. Attach Conduit Connector [8] to the end of Conduit [7].
16. Thread Solenoid Valve leads through Gasket [11], Ferrule [10], Connector [8], and Conduit [7] and fasten Connector to Solenoid Valve Electrical Fitting.
17. Make needed connections of Solenoid Valve electrical leads to 385800 Switch Assembly leads.
18. Attach Conduit [7] to 90° Connector on Switch Assembly and tighten.

19. Insert Adapter [2] in Solenoid Valve and secure.
20. Fasten Filter Assembly [6] to Adapter [2] and tighten.
21. Attach Oil Supply Line (not supplied) from Oil Source (not supplied) to Filter Assembly [6] (attachment fittings not supplied).
22. After determining that Electrical Source is turned OFF, make necessary connections to 385800 Switch Assembly.
23. Open Oil Supply Line from Oil Source.
24. Check 385800 Switch Rating (see page 2) before turning Electrical Source ON.
25. 385800 Hi-Lo Refill Switch will now open Solenoid Valve, filling Reservoir to proper level. Sensing proper level, Switch will close Solenoid Valve. 385800 will refill to proper level as long as Oil Supply to Unit is continuous. Oil Input Pressure should not exceed 500 PSI.

INSTRUCTIONS FOR 385800 HI-LO REFILL SWITCH (MODULAR UNIT)

DESCRIPTION

The 385800 Hi-Lo Refill Switch is used to energize a High Level Warning System, a Low Level Warning System, and an Automatic Refill System in Oil-Mist Units presently without such provision. It is installed in the 5 Quart and 3 Gallon Modular Type Oil-Mist Reservoirs.

The 385800 Hi-Lo Refill Switch is shipped from the factory in one size only, fitting both the above-mentioned 5 Quart and 3 Gallon Reservoirs without modification.

The Switch Housing can be rotated 90° counter-clockwise for convenient conduit connection, or can be rotated 90° clockwise for use with a conduit elbow.

The Switch closes when the oil volume in the Reservoir drops to a minimum acceptable level, still sufficient for safe operation of the unit (e.g., in the 5 Quart Reservoir, the Switch closes when the oil volume drops to 1.4 Quarts, or about 80 cubic inches of usable oil remaining).

Switch Temperature Range: -40° to 250°

Hi-Lo Level Switch Rating: 60 watts (0.5 amp max.)
90-250 VAC

Refill Switch Rating: 10 watts - 90-250 VAC

See Wiring Diagram, Figure 2

ASSEMBLY OF SWITCH (See Figure 2)

1. Remove the Bushing from Fitting [15].
2. Thread body of Fitting [15] into the Terminal Box Assembly [16] from the outside and tighten securely with a wrench.
3. Slip Nut (previously removed from Fitting [15]) onto tubing. Push wires from tubing through body on Terminal Box, insert tubing into body as far as it will go, and securely tighten nut to body with a wrench.

NOTE: Make sure that tubing is 90° to the Terminal Box Assembly to avoid float hitting the inside of the Reservoir.

INSTALLATION IN OIL-MIST RESERVOIR

1. Unthread the four Socket Head Cap Screws and remove the Plate over opening on the Reservoir (Discard the Plate but retain the Screws). Remove and reseal Gasket on opening.
2. Lower Switch Assembly into Reservoir (with an access hole normally to the rear of unit), and secure Switch to Reservoir with four Screws previously removed.
3. Thread Switch leads through access opening. Fit Decal-Wiring Diagram in a prominent position. (See Item [18], Figure 2) Replace Cover [14] with two Screws [12] and two Lockwashers [13].

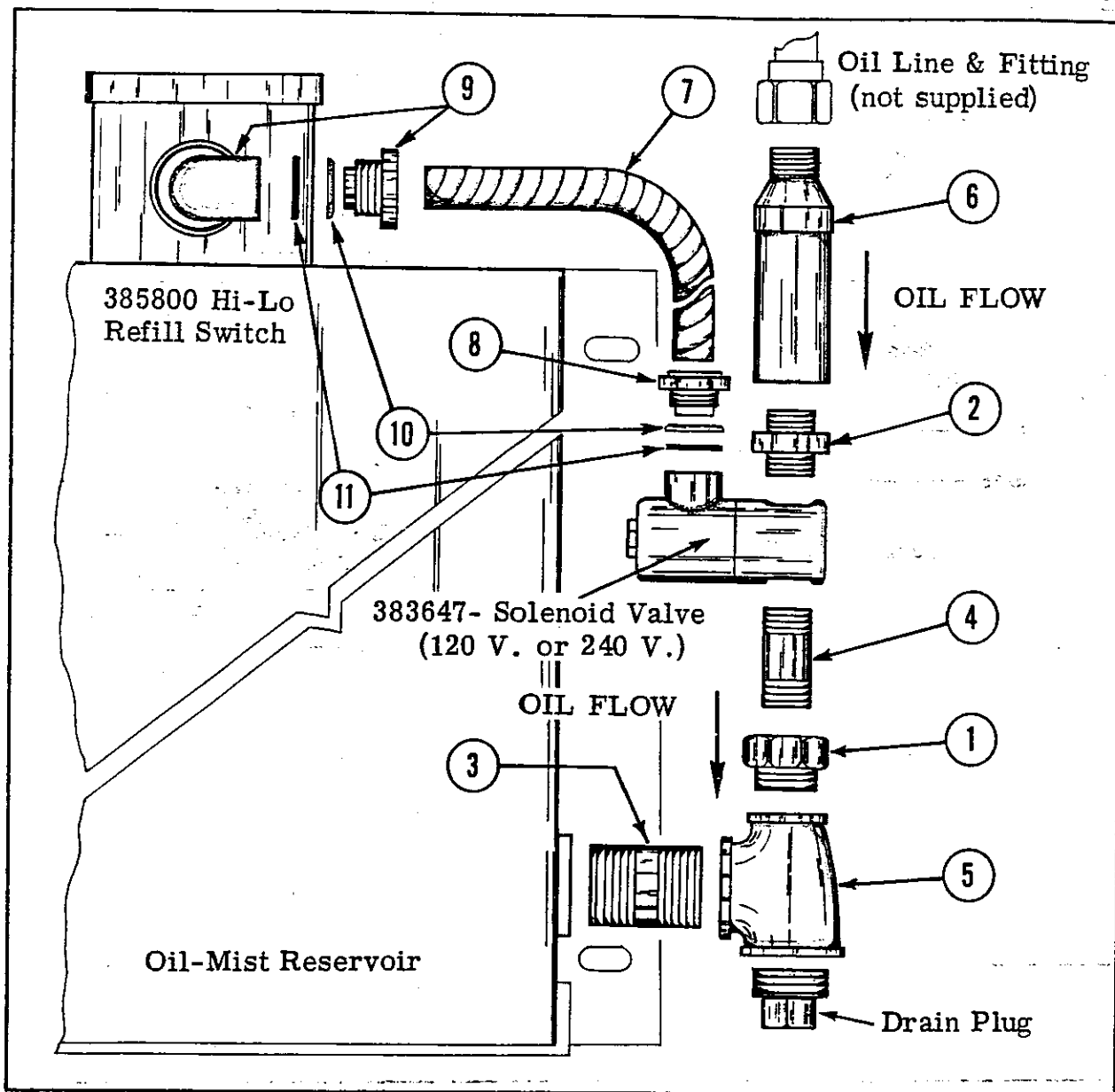


Figure 1. 385787 Hi-Lo Refill Switch Kit

PART LIST FOR 385787 HI-LO REFILL SWITCH KIT (See Figure 1)

Item No.	Part No.	Description	Qty.
1	40996	Bushing, 1/4" NPTF x 3/8" NPTF	1
2	327033	Adaptor	1
3	172264-4	Nipple, 3/4" NPT x 2" Standard	1
4	172261-4	Nipple, 1/4" NPT x 2-1/2" Standard	1
5	310566	Tee, Reducing, 3/4" x 3/4" x 3/8"	1
6	332970	Filter Assembly	1
7	386486-8	Conduit, Flex 1/2" O.D. x 20" long	1
8	330220	Connector, 1/2" Flex Conduit	1
9	335183	Connector, 1/2" Flex Conduit, 90°	1
See Fig. 2	385800	Hi-Lo Refill Switch	1
10	323357-1	Ferrule	2
11	384975	Gasket	2

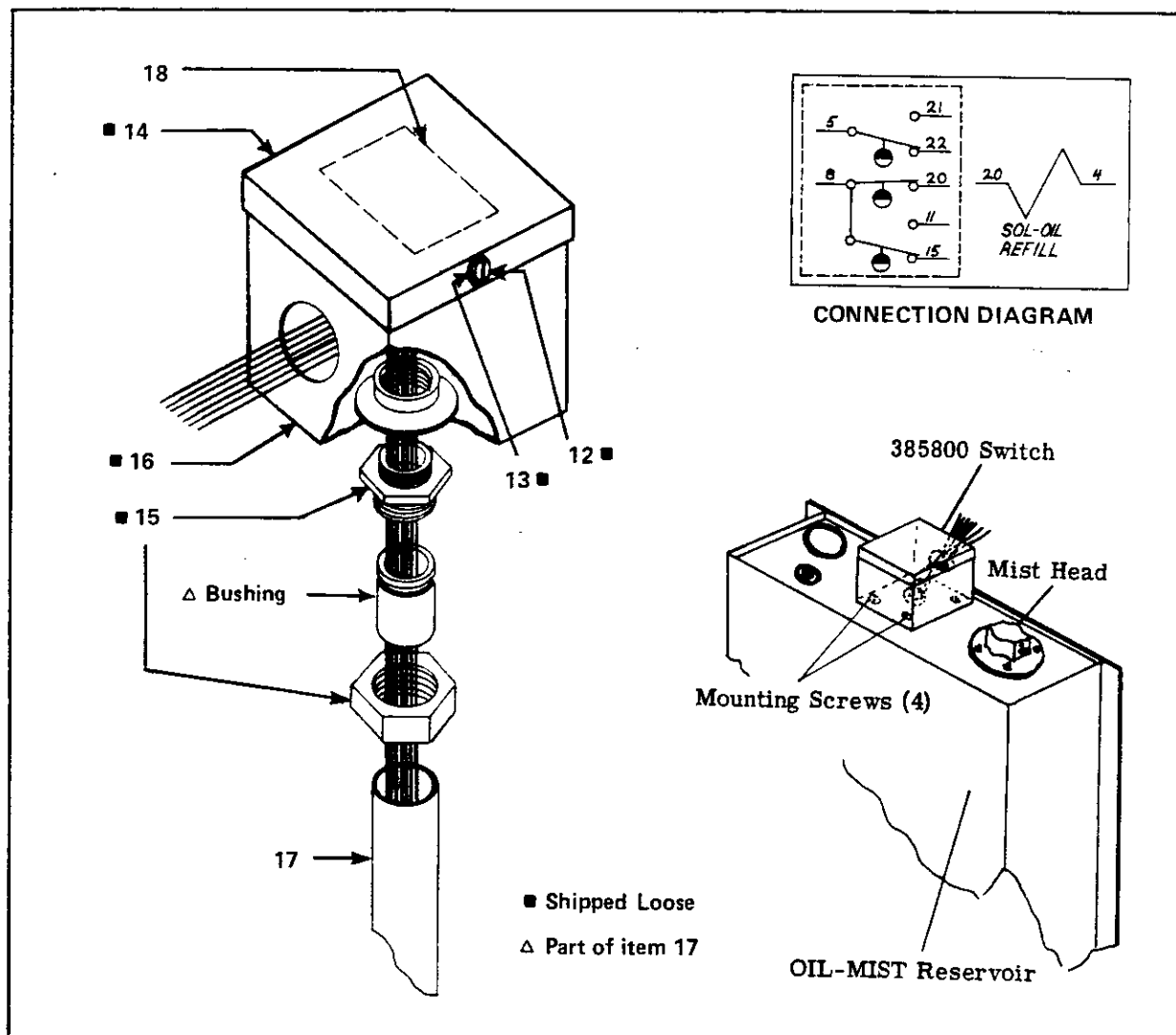


Figure 2. Assembling 385800 Hi-Lo Refill Switch

PARTS LIST

ITEM	PART NO.	DESCRIPTION	QTY.
12	18565	Self-Tapping Screw	2
13	79368	No. 6 Lockwasher	2
14	383796-2	Cover	1
15	384723-1	Fitting	1
*	384735	Float	3
*	384737	Retaining Ring	3
*	384738	Retaining Ring	4
16	384755-B4	Terminal Box Assembly	1
17	385802-B1	Tube Assembly	1
18	385996	Decal, Wiring Diagram	1

* Not illustrated

NOTE: All parts listed in this instruction sheet are for reference identification in instructions and illustrations. They will not necessarily be available unless listed in current parts price list or used on current model. Purchase bolts, nuts and other standard items from local hardware supplier. Refer to current parts price lists and bulletins for availability before ordering parts. ALWAYS mention part number, quantity, description and model used on.

CHANGES SINCE LAST PRINTING

Logo & address updated