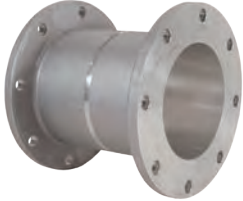


TTMA Flange Extensions



TETF4AL



TETFG4AL

Application:

- Used on load arms to connect an API load coupler to the load arm, provides a specified parting point to prevent excessive damage to the loading arm.

Feature:

- adds a 6" space between the load arm and the tank truck

Size	Description	Aluminum	
		Part #	Price/E
4"	TTMA flange extension	TETF4AL	\$130.00
4"	TTMA flange extension with groove	TETFG4AL	133.50

Type 35 Loading Arm Swivel



style 40



style 30

Features:

- TTMA loading arm swivel with D style shovel handle
- TTMA flanges on both ends
- shovel handle is used to guide the API load coupler onto the adapter on the tank truck
- long radius elbow improves the flow into the API load coupler and provides spacing between the load arm and the tank truck
- can be used with flange extensions above

Size	Description	Aluminum	
		Part #	Price/E
4"	style 40 tank truck x Buna tank truck flange	44HTFXTFAL00000	\$1400.00
4"	style 40 tank truck x FKM tank truck flange	44HTFXTFAL11000	1400.00
4"	style 30 tank truck x Buna tank truck flange	43HTFXTFAL00000	1200.00
4"	style 30 tank truck x FKM tank truck flange	43HTFXTFAL11000	1200.00

Type 35 Loading Arm Swivel Replacement Parts

Description	Part #	Price/E
4" aluminum nipple	ATN100x7	\$25.00
D style shovel handle	100DHAN-AL	35.00
Buna repair kit	4RKOBU	38.90
FKM repair kit	4RKOVIVI	60.65