

# PRODUCT INFORMATION PACKET



Model No: M6K17DK47A

Catalog No: E113700.00

..1 1/2HP..1725RPM.56H.DP.115/230V.1PH.60HZ.CONT.40C.1.15SF.RIGID C....GENERAL  
PURPOSE.MANUAL.....

Open Drip Proof (ODP)



Regal and Leeson are trademarks of Regal Beloit Corporation or one of its affiliated companies.

©2018 Regal Beloit Corporation, All Rights Reserved. MC017097E





### Nameplate Specifications

Output HP	1.50 Hp	Output KW	1.1 kW
Frequency	60 Hz	Voltage	115/230 V
Current	13.0/6.5 A	Speed	1725 rpm
Service Factor	1.15	Phase	1
Efficiency	83.8 %	Duty	Continuous
Insulation Class	B	Design Code	L
KVA Code	J	Frame	56HC
Enclosure	Drip Proof	Overload Protector	Manual
Ambient Temperature	40 °C	Drive End Bearing Size	6203
Opp Drive End Bearing Size	6203	UL	Recognized
CSA	Y	CE	N
IP Code	22		

### Technical Specifications

Electrical Type	Capacitor Start Capacitor Run	Starting Method	Across The Line
Poles	4	Rotation	Selective Counterclockwise
Mounting	Rigid base	Motor Orientation	HORIZONTAL
Drive End Bearing	BALL	Opp Drive End Bearing	BALL
Frame Material	Rolled Steel	Shaft Type	NEMA 56
Overall Length	12.87 in	Frame Length	8.00 in
Shaft Diameter	0.625 in	Shaft Extension	1.88 in
Assembly/Box Mounting	F1 ONLY		
Outline Drawing	607-0265-800B	Connection Diagram	005053.01

4

3

Uncontrolled Copy

2

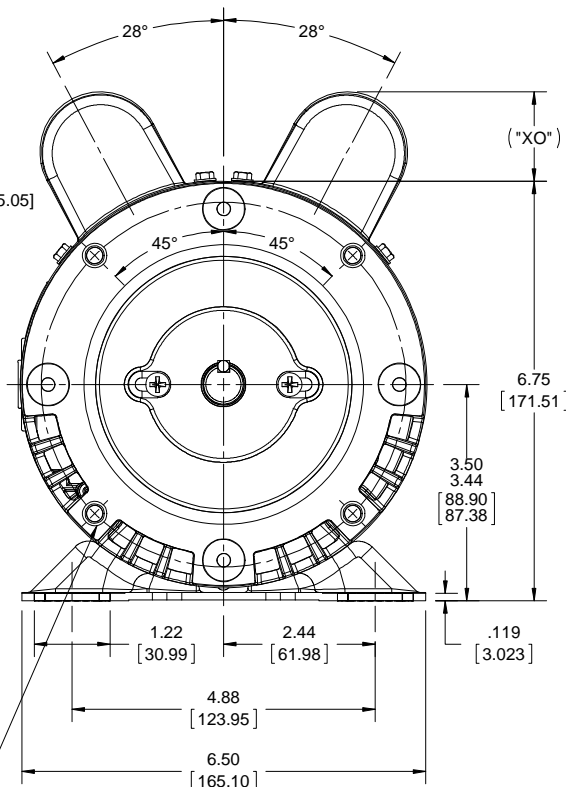
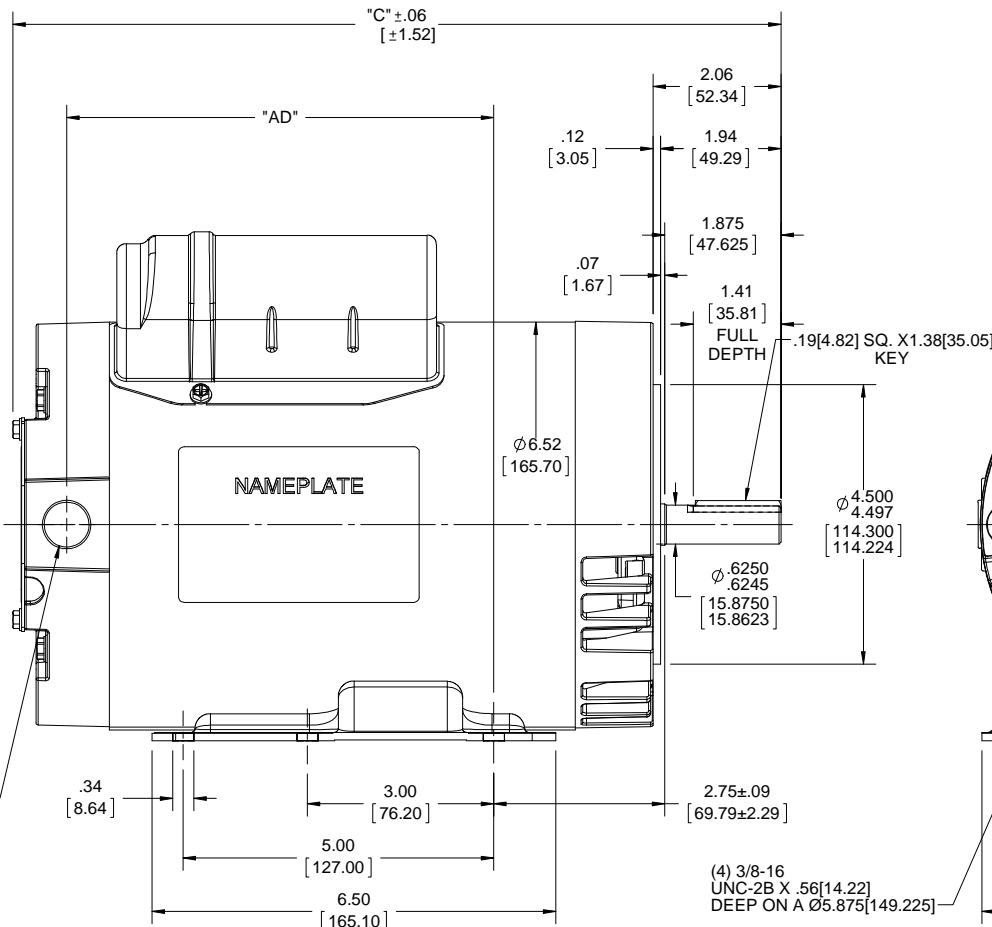
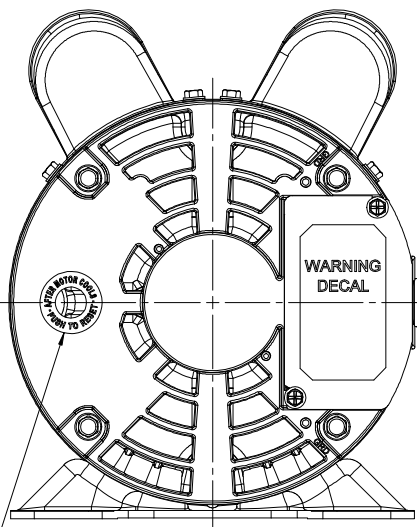
1

B

B

A

A



MAXIMUM FACE RUNOUT TO BE .004 T.I.R.  
 MAXIMUM PILOT ECCENTRICITY .004 T.I.R.  
 PERMISSIBLE SHAFT RUNOUT .002 T.I.R.

DASH NO.	"C"	"AD"	CAP DASH	"XO"
500	9.87[250.69]	4.38[111.25]		
550	10.37[263.39]	4.88[123.95]		
600	10.87[276.09]	5.38[136.65]		
650	11.37[288.79]	5.88[149.35]	A	1.15[39.37]
700	11.87[301.49]	6.38[162.05]	B	1.44[36.57]
750	12.37[314.19]	6.88[174.75]	C	1.82[46.22]
800	12.87[326.89]	7.38[187.45]		

DRAWING REVISION	REVISION BY	DATE
B	A.KEETHA	05/02/2018
ECO-0148230	APPROVED BY PK	DATE 07/05/2018

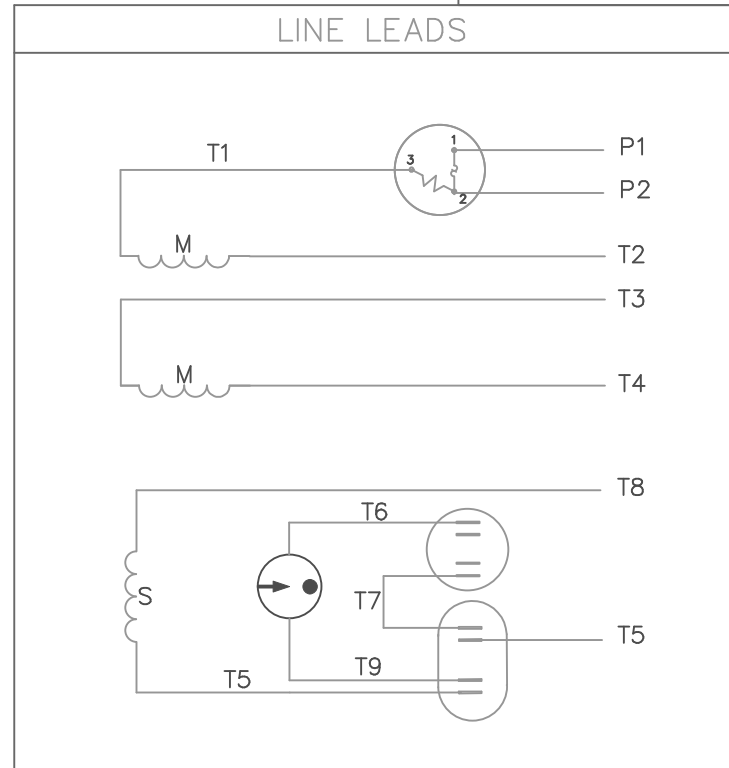
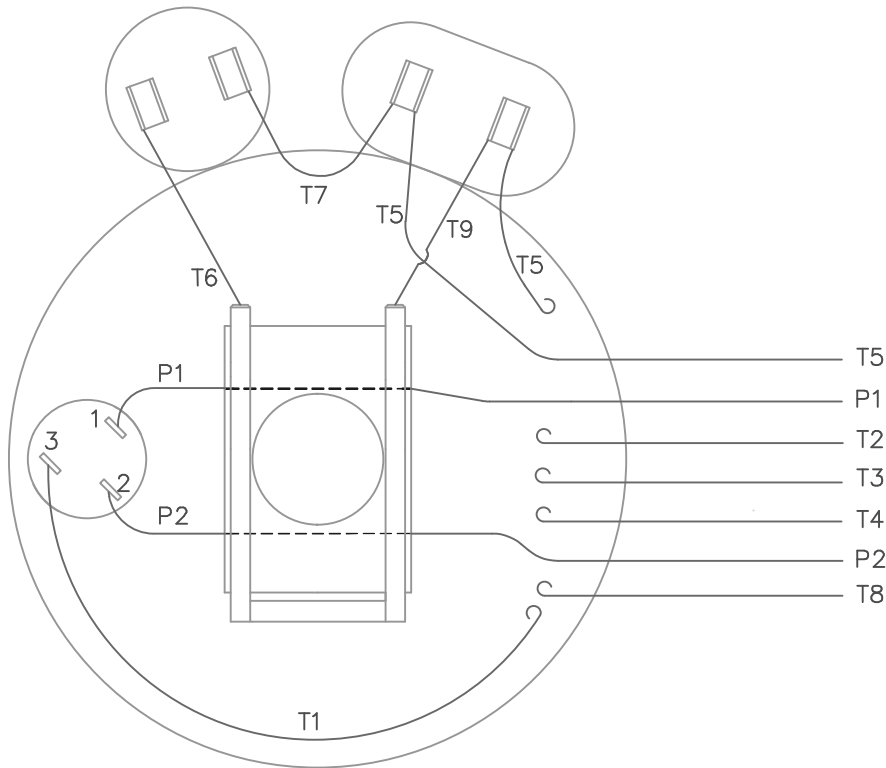
ECO DESCRIPTION  
**OUTLINE CONVERSION PROJECT**  
 COPYRIGHT REGAL BELOIT AMERICA, INC. ALL RIGHTS RESERVED.  
 PROPRIETARY AND CONFIDENTIAL INFORMATION - THIS DOCUMENT IS THE PROPERTY OF REGAL BELOIT AMERICA, INC. ("OWNER") AND CONTAINS OWNER'S PROPRIETARY INFORMATION. ANY PERSON, CORPORATION OR OTHER FIRM RECEIVING IT IS DEEMED, BY RECEIVING IT, TO AGREE THAT IT, AND/OR ANY PART OF IT, SHALL NOT BE DISCLOSED TO ANY PERSON, CORPORATION OR OTHER ENTITY, DUPLICATED, AND/OR USED, EXCEPT AS EXPRESSLY APPROVED IN WRITING IN ADVANCE BY OWNER. THIS DOCUMENT SHALL BE RETURNED TO OWNER UPON REQUEST. IT MAY BE SUBJECT TO CERTAIN RESTRICTIONS UNDER APPLICABLE EXPORT CONTROL LAWS AND REGULATIONS.

TOLERANCES UNLESS OTHERWISE SPECIFIED:
DEC. INCH mm ANGLE ±0.5°
.X ±0.1 [±2.5]
.XX ±0.03 [±0.76]
.XXX ±0.005 [±0.127]
.XXXX ±0.0005 [±0.0127]
REMOVE BURRS & BREAK SHARP EDGES: .003/.015 [0.076/.381] X 45°
CORNER FILLETS: R.02 [51]
MACHINED SURFACES: 125 INCH mm 3.2
mm SHOWN IN [BRACKETS]

DRAWN BY	PK
DATE	08/29/2016
APPROVED BY	
DATE	
REFERENCE	607-0265
THIRD ANGLE PROJECTION	

REGAL™ Regal Beloit America, Inc.	
DESCRIPTION	<b>OUTLINE</b> 56H FRAME DRIP PROOF C-FACE
MATERIAL	PROCESS/FINISH
SIZE	DRAWING NUMBER
B	607-0265
SHEET	1 OF 1

VIEW FROM OUTSIDE OF MOTOR AT SWITCH END.



	ROTATION FACING LEAD END	L1	L2	JOIN	INSULATE SEPARATELY
HIGH VOLT	C.C.W.	P1	T4 T5	T2, T3 T8	P2
	C.W.	P1	T4 T8	T2, T3 T5	P2
LOW VOLT	C.C.W.	P1	T2, T4 T5	P2, T3 T8	---
	C.W.	P1	T2, T4 T8	P2, T3 T5	---

				TOLERANCES UNLESS OTHERWISE SPECIFIED	
				DECIMALS	
				.00	± .01
				.000	± .005
18	REDRAWN ON CAD	DBT	05/27/97	.0000	± .0005
NO.	REVISION	BY	DATE	FRACTIONS	± 1/64
				ANGLES	± 1/2°
				INCH/MM	

**LEESON** ELECTRIC CORPORATION

DRAWN JRW 09/26/74 TITLE EXTERNAL WIRING DIAGRAM  
CH'K'D. TYPE "K" W/PROTECTOR

APPR. TEM MAT'L. DECAL 004011 **BRF**

SCALE 1=1 REF. 005004 FINISH SIZE A DRAWING NO. 005053-01

FMF W-K 6341

THIS DRAWING IN DESIGN AND DETAIL IS OUR PROPERTY AND MUST NOT BE USED EXCEPT IN CONNECTION WITH OUR WORK ALL RIGHTS OF DESIGN AND INVENTION ARE RESERVED



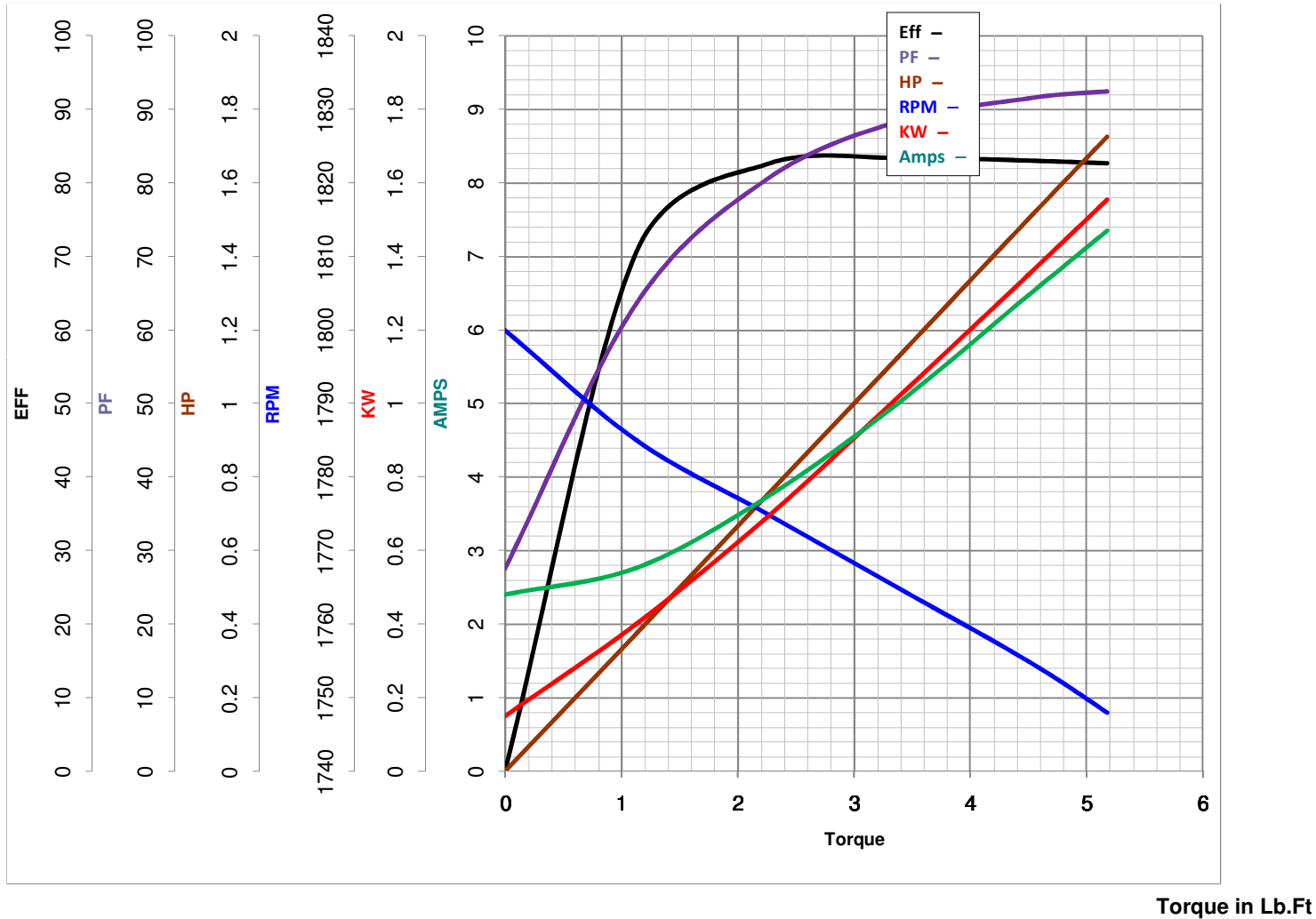
**LEESON ELECTRIC CORPORATION**  
 TYPICAL PERFORMANCE CURVE for AC MOTOR

Model No E113700.00

Curve at 230 Volts      HP 1.50      PHASE 1  
60 HZ  
1.5 HP      VOLTS 115/230

Catalog No E113700.00

HZ 60      RPM 1725



FL TORQUE 4.5 Lb.Ft  
 BD TORQUE 13.3 Lb.Ft  
 LR TORQUE 12.43 Lb.Ft

FL AMPS 13/6.5  
 PU TORQUE 11.2 Lb.Ft  
 LR AMPS 47.2

WINDING K634339-3

Date 3/26/2018