

## Switches, Low Voltage

5A, 24VDC

## Heavy Duty, Specification Grade

# HUBBELL

### Features

- Momentary Contact
- 3 Position, Center OFF
- Automatic self-grounding stainless steel clip

### Ordering Information

Description	Device Color	UPC Number	Catalog Number
Toggle, back and side wired	Ivory	783585554730	HBL15571LV



### Specifications

Front	Thermoplastic
Base	Thermoset
Contacts	Silver Alloy
Terminal Screws	Brass
Mounting Bridge	Steel, Nickel Plated

### Performance

#### Electrical

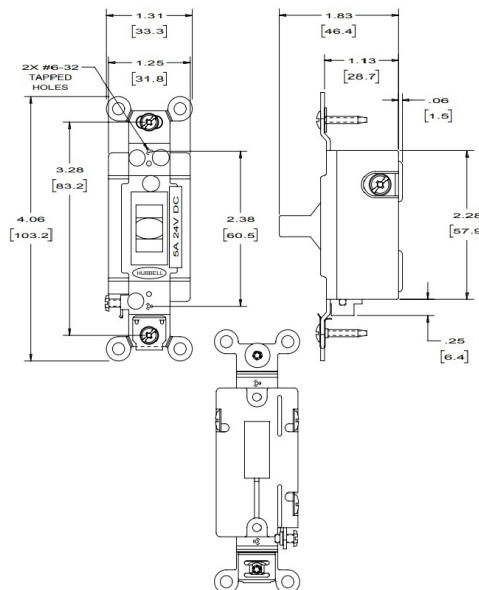
Configuration	Single Pole/Double Throw
Operating Current	Maximum of 5A @ 24VDC

#### Mechanical

Terminal Accommodations	#14 AWG min. - #10 AWG max. solid or stranded copper wire only
-------------------------	--

#### Environmental

Operating Temperature	Max. continuous: 75°C; Min. continuous: -40°C without impact
-----------------------	--



### Complementary Products

Wallplate, Toggle Opening, Snap-on	NPS11
Wallplate, Toggle Opening	NP11
Wallplate, Toggle Opening, Stainless Steel	SS1

### Online Resources

Customer Use Drawing  
eCatalog  
Installation Instructions

Dimensions in Inches (mm)

Hubbell Wiring Device-Kellems • Hubbell Incorporated (Delaware) • 40 Waterview Drive • Shelton, CT 06484

Phone (800) 288-6000 • Fax (800) 255-1031 • Specifications subject to change without notice.

