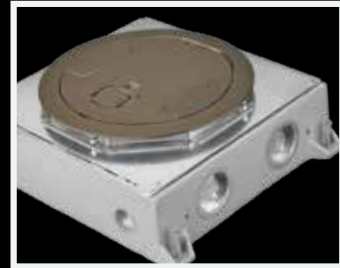


HUBBELL SystemOne

Recessed
Floor Boxes



from the Leader in Delivery Systems



What Are Delivery Systems?

Hubbell Delivery Systems are a family of products that work together to provide commercial buildings with access to power, data, and AV. From floor boxes to ceiling enclosures – and everything in between – Hubbell can deliver power, data, and AV to wherever it's needed. The Delivery Systems line keeps schools, hotels, hospitals, retail facilities, and office buildings all reliably, conveniently, and safely connected. No matter the project, Hubbell Delivery Systems has a flexible, easy-to-access, aesthetically pleasing solution.

Hubbell SystemOne – One Look for Any Capacity

SystemOne – part of Hubbell's Delivery Systems line – was born from a desire to create a common look for fire-rated poke-throughs and floor boxes. This innovative system allows you to create custom solutions for multi-service applications that require both flush in-floor boxes and fire-rated poke-throughs.

Regardless of capacity or installation, this simple concept allows engineers, architects, and contractors to select just one product line that will provide a uniform look throughout an entire building – whether the power, data, and AV are being delivered in the floor or through the floor.

Hubbell's first SystemOne devices included a 4-inch flush fire-rated poke-through and floor boxes that shared a common cover assembly. With the introduction of 4, 6 and 8-inch recessed fire-rated poke-throughs, commercial buildings were provided with even more capacity options without having to sacrifice matching high-end finishes.

The most recent addition to SystemOne is a full line of recessed floor boxes for concrete and raised access floor applications. These recessed floor boxes guarantee a similar look for all capacities and installations. They offer a traditional rectangular cover and installation, as well as the option to use high-end round covers to match the recessed poke-through line.



1

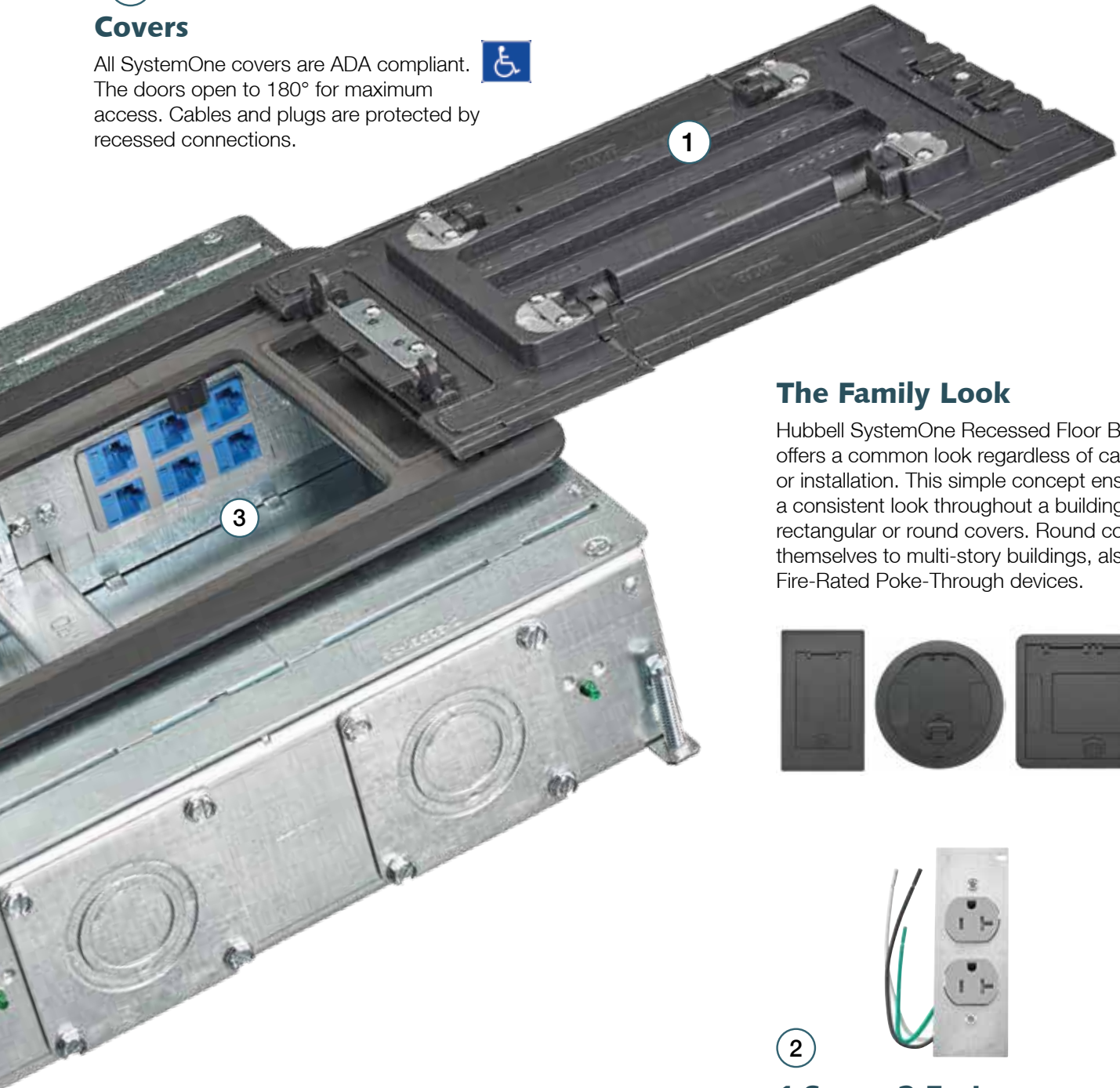
Covers

All SystemOne covers are ADA compliant. The doors open to 180° for maximum access. Cables and plugs are protected by recessed connections.



1

3



The Family Look

Hubbell SystemOne Recessed Floor Box line offers a common look regardless of capacity or installation. This simple concept ensures a consistent look throughout a building with rectangular or round covers. Round covers lend themselves to multi-story buildings, also using Fire-Rated Poke-Through devices.



2



1 Screw 3 Fasteners

Pre-wired duplex or Style Line® receptacles with 8 in. stranded leads are installed into plates to allow for even more labor savings.

3

Easy Mount Device Plates

The Easy Mount device plates allow for a device to be mounted to the plate and wired outside of the floor box. The device and plate assembly are then easily installed and secured with one stud that locates the plate and one screw to secure it.



This patent pending device fastening method maximizes efficiency while reducing install time and comes standard with all device plates for 2, 4 and 6-Gang boxes.

Selecting a Concrete Floor Box

To assist with the floor box selection process, please have the following information available:

Electrical requirements:	Application:	Cover style:
Power (each electrical device requires one gang) Data/AV (consult manufacturers' specification for size/volume requirements), number required. Add up total number to determine needed capacity. If necessary capacity is not shown round up to next size. Example: 9-Gang rounds up to a 10-Gang floor box	On-grade (OG) Above-grade (AG) Minimum concrete pour depth	Round Rectangular

Once this information is gathered start on the capacity column:

- Capacity: Select necessary box.
- Application: Select the concrete pour depth and on-grade or above-grade application.
- Cover style: Select round or rectangular cover.
- Locate interconnecting point of all three categories and move to right to select correct catalog number.

Table of Contents

Floor Boxes for Concrete Floors

Features..... 4-5
2-Gang 6-9
4-Gang 10-13
6-Gang 14-17
10-Gang 18-21

Floor Boxes for Raised Access and Wood Floors

Features..... 22-23
2-Gang 24-25
4-Gang 26-27
4-Gang Round..... 28-29
10-Gang 30-31

		Application - Minimum Pour Depth ②												Select Correct Catalog Number ④	
		2 ½ in.		3 in.		3 ¼ in.		3 ¾ in.		5 ½ in.		6 ¼ in.			
		AG	OG	AG	OG	AG	OG	AG	OG	AG	OG	AG	OG		
2-Gang	Electrical Requirements - Capacity ①	•													CFB2G25
			•												CFB2G25CR
				•											CFB2G30
					•										CFB2G30CR
						•									CFB2G25R
							•								CFB2G25RCR
								•							CFB2G30R
									•						CFB2G30RCR
4-Gang		•													CFB4G25
			•												CFB4G25CR
				•											CFB4G30
					•										CFB4G30CR
						•									CFB4G25R
							•								CFB4G25RCR
								•							CFB4G30R
									•						CFB4G30RCR
6-Gang				•											CFB6G30
					•										CFB6G30CR
							•								CFB6G30R
								•							CFB6G30RCR
10-Gang									•						CFB10G55
										•					CFB10G55CR
												•			CFB10G55R
													•		CFB10G55RCR
		Rectangular	Rectangular	Round	Round	Rectangular	Round								
		Cover Style ③													

Benefits and Enhancements

Safety

- Flush flange available for tile, finished concrete or Terrazzo
- Surface flange available for carpeted floors with 0.15 in. rise meets ADA requirements
- Hideaway egress doors fold under cover while in use
- 180° opening of main door

Functionality

- Cables and connections are protected by recessed functionality
- Open architecture sub-plate design
- Common door layout regardless of flange for harmonized look
- Meets UL 514A scrub water requirements with ScrubShield® technology
- Easy selection with common look for all floor types

Value

- Enhance building décor with numerous finishes
- Increase durability and longevity with cast aluminum covers

Online Resources

- BIM models, customer drawings and technical specifications are available on www.hubbell-wiring.com



Concrete Pour Pocket Cap

In concrete applications, all SystemOne Recessed floor boxes include a yellow pour pocket cap.

This factory-installed, field-removable pour pocket cap provides a pocket in the final floor to accept the covers intended for terrazzo, tile, or finished concrete floor. The cap may not be used for carpet, wood or engineered floors.



2 Inch Conduit Ready

To meet expanding AV and data needs, the Hubbell SystemOne Recessed Floor Box line readily accepts 2 inch conduits with the use of a 2 inch threaded conduit hub. The offset design allows for less conduit lifting while threading and the hub mounting holes are asymmetrical for installation efficiency.



Corrosion Resistant Epoxy Paint

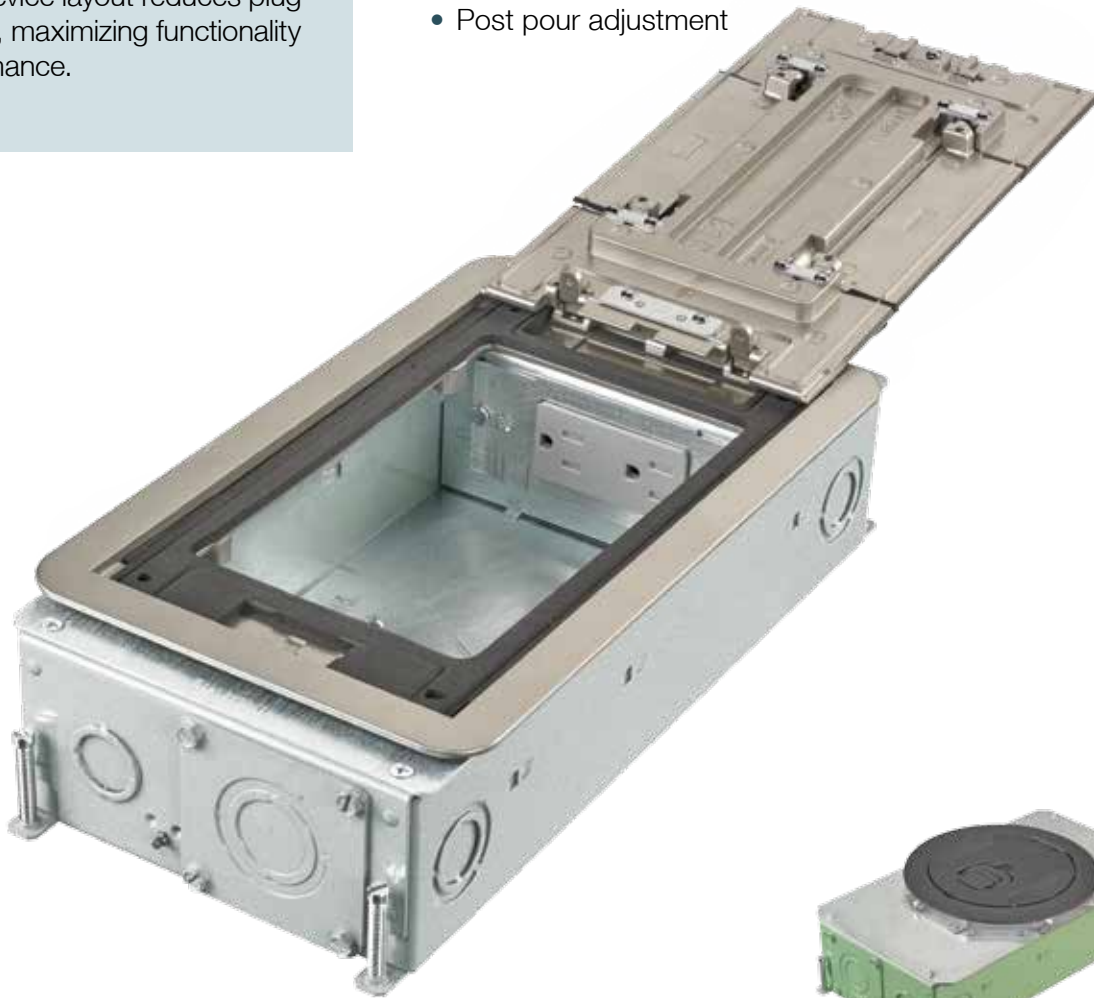
Intended for on-grade use, the CR version is coated with fusion-bonded epoxy paint to help prevent corrosion.

Hubbell SystemOne 2-Gang Recessed Concrete Floor Box

The Hubbell SystemOne 2-Gang Recessed Concrete Floor Box offers eight styles, satisfying the requirements of almost any commercial building application. Rectangular or round covers, as well as furniture feed covers, are available in a variety of finishes to blend with any existing or new décor. A parallel-device layout reduces plug interference, maximizing functionality and performance.

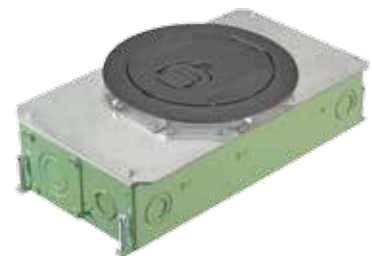
Cover

- 180° cover opening
- Two large cable egress doors
- Listed to UL 514A and UL scrub water compliant
- Die cast aluminum cover construction
- Available in round, rectangular and furniture feed styles
- All covers are ADA compliant
- Post pour adjustment



Box

- Minimum pour depths of 2 ½ in. to 3 ¼ in.
- 16 gauge galvanized sheet metal construction
- Optional fusion-bonded, green epoxy paint for on-grade use
- 6 in. solid conductor ground pigtail in each gang
- 3 in. deep version accepts adapter (**CFBHUB2**) for 2 in. conduit
- Pre pour adjustment
- Meets UL 514A requirements and are UL scrub water compliant
- Patent pending, labor saving, easy mount device plates



CR version is coated with fusion-bonded epoxy paint to help prevent corrosion and intended for on-grade use.



Hubbell SystemOne 2-Gang Floor Boxes

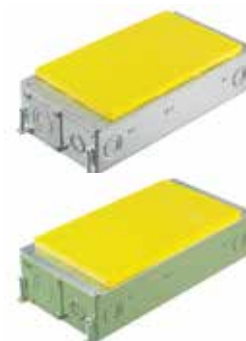
CFB2G30 Series - Rectangular Cover for 3 in. Minimum Pour

- Designed for applications requiring up to 2 in. conduits (with use of **CFBHUB2**) and a rectangular cover
- When a 3 in. concrete pour is required the insert is removed and requires the finished floor type to be carpet or another engineered floor type

Includes:

- Two removable knock-out plates (1 per gang) can be replaced with 2 in. zinc conduit hub (**CFBHUB2**) when needed
- A ½ in. plastic cover insert is included and allows for easy use in tile, finished concrete or other mediums

Catalog Number	Box Type	Min.Pour Depth	Plate Depth	Device Volume	Cover Series	Knockouts
CFB2G30 CFB2G30CR	Standard On-grade	3 in.	2 ½ in.	35 cu. in.	24G/2GFF	½ in. to 2 in.*



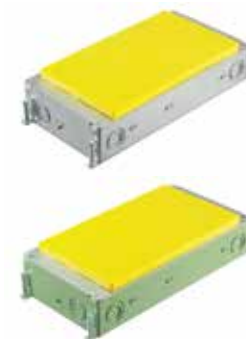
CFB2G25 Series - Rectangular Cover for 2 ½ in. Minimum Pour

- Designed for applications requiring up to 1 in. conduits and a rectangular cover
- When a 2 ½ in. concrete pour is required the insert is removed and requires the finished floor type to be carpet or another engineered floor type

Includes:

- A ½ in. plastic cover insert is included and allows for easy use in tile, finished concrete or other mediums

Catalog Number	Box Type	Min.Pour Depth	Plate Depth	Device Volume	Cover Series	Knockouts
CFB2G25 CFB2G25CR	Standard On-grade	2 ½ in.	2 ½ in.	30 cu. in.	24G/2GFF	½ in. to 1 in.



CFB2G30R Series - Round Cover for 3 ¾ in. Minimum Pour

- Designed for applications requiring up to 2 in. conduits (with use of **CFBHUB2**) and a round cover
- Minimum concrete pour of 3 ¾ in. and includes a collar for post pour adjustment of ¼ in.
- Suitable for all floor finish types

Includes:

- Two removable knock-out plates (1 per gang) can be replaced with 2 in. zinc conduit hub (**CFBHUB2**) when needed

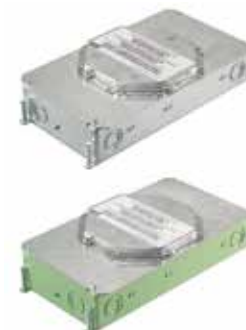
Catalog Number	Box Type	Min.Pour Depth	Plate Depth	Device Volume	Cover Series	Knockouts
CFB2G30R CFB2G30RCR	Standard On-grade	3 ¾ in.	2 ½ in.	35 cu. in.	CFBS1R6/ CFBS1R6FF	½ in. to 2 in.*



CFB2G25R Series - Round Cover for 3 ¼ in. Minimum Pour

- Designed for applications requiring up to 1 in. conduits and a round cover
- Minimum concrete pour of 3 ¼ in. and includes a collar for post pour adjustment of ¼ in.
- Suitable for all floor finish types

Catalog Number	Box Type	Min.Pour Depth	Plate Depth	Device Volume	Cover Series	Knockouts
CFB2G25R CFB2G25RCR	Standard On-grade	3 ¼ in.	2 ½ in.	30 cu. in.	CFBS1R6/ CFBS1R6FF	½ in. to 1 in.



* 2 in. conduits require the use of **CFBHUB2** (purchased separately). See page 9.

Hubbell SystemOne 2-Gang Covers

UL 514A Listed 

Surface Style Rectangular Covers (for use with carpet, tile, VCT and other engineered floors)

- Compatible with **CFB2G25**, **CFB2G25CR**, **CFB2G30** and **CFB2G30CR**
- Cover dimensions 11 11/16 in. x 7 3/16 in. and two large cable egress doors and access 180° opening
- Maximum static load of 800 lbs. with 2x safety factor*

Finish	Flush Surface	With Insert	Furniture Feed (1 in. and 2 in. Plugs)
Aluminum Powder Coated	24GCCVRALU	24GCCVRALUC	2GCFFCVRALU
Black Powder Coated	24GCCVRBK	24GCCVRBK	2GCFFCVRBK
Brass Powder Coated	24GCCVRBRS	24GCCVRBRSC	2GCFFCVRBRS
Bronze Powder Coated	24GCCVRBRZ	24GCCVRBRZC	2GCFFCVRBRZ
Satin Nickel Powder Coated	24GCCVRNK	24GCCVRNK	2GCFFCVRNK



Flush Style Rectangular Covers (for use with tile, finished concrete and Terrazzo floors)

- Compatible with **CFB2G25**, **CFB2G25CR**, **CFB2G30** and **CFB2G30CR**
- Cover dimensions 10 11/16 in. x 6 3/16 in. and two large cable egress doors and access 180° opening
- Maximum static load of 800 lbs. with 2x safety factor*

Finish	Flush Surface	With Insert	Furniture Feed (1 in. and 2 in. Plugs)
Aluminum Powder Coated	24GTCVRALU	24GTCVRALUC	2GTFFCVRALU
Black Powder Coated	24GTCVRBK	24GTCVRBK	2GTFFCVRBK
Brass Powder Coated	24GTCVRBRS	24GTCVRBRSC	2GTFFCVRBRS
Bronze Powder Coated	24GTCVRBRZ	24GTCVRBRZC	2GTFFCVRBRZ
Satin Nickel Powder Coated	24GTCVRNK	24GTCVRNK	2GTFFCVRNK



Round Covers (for use with all floor types)

- Compatible with **CFB2G25R**, **CFB2G25RCR**, **CFB2G30R** and **CFB2G30RCR**
- Cover has a 7 1/2 in. outer diameter and two large cable egress doors and access 180° opening
- Maximum static load of 1000 lbs. with 2x safety factor*

Finish	Flush Surface	Furniture Feed (3/4 in. and 2 in. Plugs)
Brushed Aluminum	CFBS1R6CVRALU	CFBS1R6FFCVRALU
Black Powder Coated	CFBS1R6CVRBLK	CFBS1R6FFCVRBLK
Brass Plated	CFBS1R6CVRBRS	CFBS1R6FFCVRBRS
Bronze Plated	CFBS1R6CVRBRZ	CFBS1R6FFCVRBRZ
Satin Nickel Plated	CFBS1R6CVRNKL	CFBS1R6FFCVRNKL



* Load applied through a 3 in. (76mm) mandrel in center of the cover.

Hubbell SystemOne 2-Gang Plates and Accessories



Plates for use in 2-, 4- and 6-Gang Floor Boxes

- UL 514A listed

Plate Style	(1) Decorator Opening	(1) Duplex Opening	(2) Extron® MAAP Openings	(2) Extron® Openings
Cat. No.	FBMPREC	FBMPDUP	FBMPMAAP	FBMPAAP
Plate Style	(2) 1U Hubbell iStation Openings	(1) 1.5U Hubbell iStation Opening	(1) Simplex Opening 1.40 in. Diameter	(1) Twist-Lock® Opening 1.60 in. Diameter
Cat. No.	FBMP2IM	FBMP15IM	FBMP139	FBMP156
Plate Style	1-Gang Blank	Cable Feed Through with Bushing	(1) Opening for TracJack® or Series II®	(1) Opening with Hubbell ISF6 Frame for Keystone Jacks
Cat. No.	FBMPBNK	FBMPFT	FBMPTRAC	FBMP6KS

Pre-Wired Device Plates

- Reduces wiring and installation times
- 8 in. stranded leads mounted to the face plate

Description	Type	15A	20A
Duplex, Gray	Standard Tamper-Resistant	PWFBMPCR15GRY PWFBMPCR15GRYTR	PWFBMPCR20GRY PWFBMPCR20GRYTR
Decorator, Gray	Standard Tamper-Resistant	PWFBMPDR15GRY PWFBMPDR15GRYTR	PWFBMPDR20GRY PWFBMPDR20GRYTR



Accessories

Description	Catalog Number
2 in. threaded zinc hub for use with CFB2G30 , CFB4G30 and CFB6G30 series floor boxes; replaces CFBKOPLATE	CFBHUB2
Replacement knock-out plate	CFBKOPLATE
Replacement knock-out plate with epoxy coating	CFBKOPLATECR
Replacement wire-way, used to pass wires from one compartment to the other, for use in CFB2G30/CR rectangular boxes	CFB2WW
Finished floor height adjustment ring - increase post pour adjustment; use with CFBS1R6 cover series	0 - 1/4 in. CFB6RCVRR1* 1/4 in. - 1/2 in. CFB6RCVRR2 1/2 in. - 3/4 in. CFB6RCVRR3

*Included with standard **CFB2G30R** and **CFB2G25R** series.

Extron® is a registered trademark of Extron Electronics.
Crestron® is a registered trademark of Crestron Electronics, Inc.
FSR® is a registered trademark of FSR Inc.
TracJack®, Series II® and Ortronics® are registered trademarks of Ortronics/Legrand.



Hubbell SystemOne 4-Gang Recessed Concrete Floor Box

Similar to the 2-Gang Recessed Concrete Floor Box, Hubbell's SystemOne 4-Gang Recessed Concrete Floor Box is available with rectangular or round covers. Ten different styles make it possible to meet the electrical requirements of most commercial projects - new construction or renovation. The parallel device layout maximizes functionality which can be limited when devices are mounted 90° from one another.

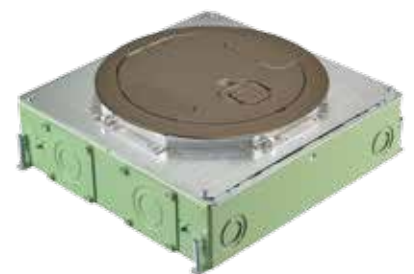
Cover

- 180° cover opening
- Two large cable egress doors
- Listed to UL 514A and UL scrub water compliant
- Die cast aluminum cover construction
- Available with round or rectangular covers
- All covers are ADA compliant
- Post pour adjustment



Box

- Minimum pour depths of 2 ½ in. to 3 ¾ in.
- 16 gauge galvanized sheet metal and cast iron construction
- Optional fusion-bonded, green epoxy paint for on-grade use
- 6 in. solid conductor ground pigtail in each gang
- 3 in. deep version accepts adapter (**CFBHUB2**) for 2 in. conduit
- Pre pour adjustment
- Meets UL 514A requirements and are scrub water compliant
- Patent pending, labor saving, easy mount device plates



CR version is coated with fusion-bonded epoxy paint to help prevent corrosion and intended for on-grade use.



Hubbell SystemOne 4-Gang Floor Boxes

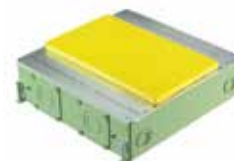
CFB4G30 Series – Rectangular Covers for 3 in. Minimum Pour

- Designed for applications requiring up to 2 in. conduits (with use of **CFBHUB2**) and a rectangular cover
- When a 3 in. concrete pour is required the insert is removed and requires the finished floor type to be carpet or another engineered floor type

Includes:

- Four removable knock-out plates (1 per gang) can be replaced with 2 in. zinc conduit hub (**CFBHUB2**) when needed
- A ½ in. plastic cover insert is included and allows for easy use in tile, finished concrete or other mediums

Catalog Number	Box Type	Min.Pour Depth	Plate Depth	Device Volume	Cover Series	Knockouts
CFB4G30	Standard	3 in.	2 ½ in.	32.5 cu. in.	24G	½ in. to 2 in.*
CFB4G30CR	On-grade					
CFB4G30CI	Cast Iron	3 ¾ in.	2 ½ in.	32.5 cu. in.	24G	¾ in. to 1 ½ in.



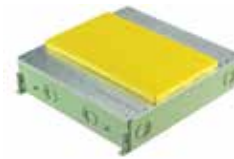
CFB4G25 Series – Rectangular Covers for 2 ½ in. Minimum Pour

- Designed for applications requiring up to 1 in. conduits and a rectangular cover
- When a 2 ½ in. concrete pour is required the insert is removed and requires the finished floor type to be carpet or another engineered floor type

Includes:

- A ½ in. plastic cover insert is included and allows for easy use in tile, finished concrete or other mediums

Catalog Number	Box Type	Min.Pour Depth	Plate Depth	Device Volume	Cover Series	Knockouts
CFB4G25	Standard	2 ½ in.	2 ½ in.	26.5 cu. in.	24G	½ in. to 1 in.
CFB4G25CR	On-grade					



CFB4G30R Series – Round Covers for 3 ¾ in. Minimum Pour

- Designed for applications requiring up to 2 in. conduits (with use of **CFBHUB2**) and a round cover
- Minimum concrete pour of 3 ¾ in. and includes a collar for post pour adjustment of ¼ in.
- Suitable for all floor finish types

Includes:

- Four removable knock-out plates (1 per gang) can be replaced with 2 in. zinc conduit hub (**CFBHUB2**) when needed

Catalog Number	Box Type	Min.Pour Depth	Plate Depth	Device Volume	Cover Series	Knockouts
CFB4G30R	Standard	3 ¾ in.	2 ½ in.	32.5 cu. in.	CFBS1R8	½ in. to 2 in.*
CFB4G30RCR	On-grade					
CFB4G30RCI	Cast Iron	4 in.	2 ½ in.	32.5 cu. in.	CFBS1R8	¾ in. to 1 ½ in.



CFB4G25R Series – Round Covers for 3 ¼ in. Minimum Pour

- Designed for applications requiring up to 1 in. conduits and a round cover
- Minimum concrete pour of 3 ¼ in. and includes a collar for post pour adjustment of ¼ in.
- Suitable for all floor finish types

Catalog Number	Box Type	Min.Pour Depth	Plate Depth	Device Volume	Cover Series	Knockouts
CFB4G25R	Standard	3 ¼ in.	2 ½ in.	26.5 cu. in.	CFBS1R8	½ in. to 1 in.
CFB4G25RCR	On-grade					



* 2 in. conduits require the use of **CFBHUB2** (purchased separately). See page 13.



Hubbell SystemOne 4-Gang Covers

UL 514A Listed 

Surface Style Rectangular Covers (for use with carpet, tile, VCT and other engineered floors)

- Compatible with **CFB4G25, CFB2G25CR, CFB4G30, CFB4G30CR** and **CFB4G30CI**
- Cover dimensions 11 11/16 in. x 7 3/16 in. and two large cable egress doors and access 180° opening
- Maximum static load of 800 lbs. with 2x safety factor*

Finish	Flush Surface	With Insert
Aluminum Powder Coated	24GCCVVALU	24GCCVVALUC
Black Powder Coated	24GCCVRBK	24GCCVRBKC
Brass Powder Coated	24GCCVRBRS	24GCCVRBRSC
Bronze Powder Coated	24GCCVRBRZ	24GCCVRBRZC
Satin Nickel Powder Coated	24GCCVRNK	24GCCVRNKC



Flush Style Rectangular Covers (for use with tile, finished concrete and Terrazzo floors)

- Compatible with **CFB4G25, CFB2G25CR, CFB4G30, CFB4G30CR** and **CFB4G30CI**
- Cover dimensions 10 11/16 in. x 6 3/16 in. and two large cable egress doors and access 180° opening
- Maximum static load of 800 lbs. with 2x safety factor*

Finish	Flush Surface	With Insert
Aluminum Powder Coated	24GTCVVALU	24GTCVVALUC
Black Powder Coated	24GTCVRBK	24GTCVRBKC
Brass Powder Coated	24GTCVRBRS	24GTCVRBRSC
Bronze Powder Coated	24GTCVRBRZ	24GTCVRBRZC
Satin Nickel Powder Coated	24GTCVRNK	24GTCVRNKC



Round Covers (for use with all floor types)

- Compatible with **CFB4G25R, CFB4G25RCR, CFB4G30R, CFB4G30RCR** and **CFB4G30RCI**
- Cover has a 9 1/2 in. outer diameter and two large cable egress doors and access 180° opening
- Maximum static load of 1000 lbs. with 2x safety factor*

Finish	Flush Surface
Brushed Aluminum	CFBS1R8CVVALU
Black Powder Coated	CFBS1R8CVVBK
Brass Plated	CFBS1R8CVVBRS
Bronze Plated	CFBS1R8CVVBRZ
Satin Nickel Plated	CFBS1R8CVVBNK



* Load applied through a 3 in. (76mm) mandrel in center of the cover.

Hubbell SystemOne 4-Gang Plates and Accessories



Plates for use in 2-, 4- and 6-Gang Floor Boxes

- UL 514A listed

Plate Style	(1) Decorator Opening	(1) Duplex Opening	(2) Extron® MAAP Openings	(2) Extron® Openings
Cat. No.	FBMPREC	FBMPDUP	FBMPMAAP	FBMPAAP
Plate Style	(2) 1U Hubbell iStation Openings	(1) 1.5U Hubbell iStation Opening	(1) Simplex Opening 1.40 in. Diameter	(1) Twist-Lock® Opening 1.60 in. Diameter
Cat. No.	FBMP2IM	FBMP15IM	FBMP139	FBMP156
Plate Style	1-Gang Blank	Cable Feed Through with Bushing	(1) Opening for TracJack® or Series II®	(1) Opening with Hubbell ISF6 Frame for Keystone Jacks
Cat. No.	FBMPBNK	FBMPFT	FBMPTRAC	FBMP6KS

Pre-Wired Device Plates

- Reduces wiring and installation times
- 8 in. stranded leads mounted to the face plate

Description	Type	15A	20A
Duplex, Gray	Standard	PWFBMPCR15GRY	PWFBMPCR20GRY
	Tamper-Resistant	PWFBMPCR15GRYTR	PWFBMPCR20GRYTR
Decorator, Gray	Standard	PWFBMPDR15GRY	PWFBMPDR20GRY
	Tamper-Resistant	PWFBMPDR15GRYTR	PWFBMPDR20GRYTR



Accessories

Description		Catalog Number
2 in. threaded zinc hub for use with CFB2G30 , CFB4G30 and CFB6G30 series floor boxes; replaces CFBKOPATE		CFBHUB2
Replacement knock-out plate	Standard Epoxy Coating	CFBKOPATE CFBKOPATECR
Replacement wire-way, used to pass wires from one compartment to the other, for use in rectangular boxes	CFB4G30/CR CFB4G25/CR	CFB46WW CFB4WW
Finished floor height adjustment ring - increase post pour adjustment; use with CFBS1R8 cover series	0 - 1/4 in. 1/4 in. - 1/2 in. 1/2 in. - 3/4 in.	CFB8RCVRR1* CFB8RCVRR2 CFB8RCVRR3
Replacement low voltage divider		CFB46DIV

*Included with standard **CFB4G30R** and **CFB4G25R** series.

Extron® is a registered trademark of Extron Electronics.
 Crestron® is a registered trademark of Crestron Electronics, Inc.
 FSR® is a registered trademark of FSR Inc.
 TracJack®, Series II® and Ortronics® are registered trademarks of Ortronics/Legrand.



Hubbell SystemOne 6-Gang Recessed Concrete Floor Box

Increased power, data, and AV capacity is what the Hubbell SystemOne 6-Gang Recessed Concrete Floor Box was designed to handle. Four styles allow the floor box to work within almost any commercial application to enhance connectivity. Rectangular and round covers are available in a variety of finishes that work with any aesthetic or finish.

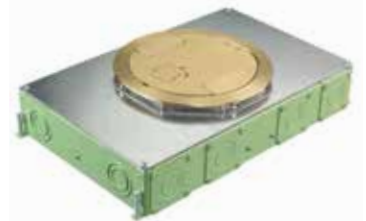
Cover

- 180° cover opening
- Two large cable egress doors
- Listed to UL 514A and UL scrub water compliant
- Die cast aluminum cover construction
- Available with round or rectangular covers
- All covers are ADA compliant
- Post pour adjustment



Box

- Minimum pour depth of 3 in. to 3 ¾ in.
- 16 gauge galvanized sheet metal construction
- Optional fusion-bonded, green epoxy paint for on-grade use
- 6 in. solid conductor ground pigtail in each gang
- 3 in. deep version accepts adapter (**CFBHUB2**) for 2 in. conduit
- Pre pour adjustment
- Meets UL 514A requirements and are scrub water compliant
- Patent pending, labor saving, easy mount device plates



CR version is coated with fusion-bonded epoxy paint to help prevent corrosion and intended for on-grade use.



Hubbell SystemOne 6-Gang Floor Boxes

CFB6G30 Series – Rectangular Covers for 3 in. Minimum Pour

- Designed for applications requiring up to 2 in. conduits (with use of **CFBHUB2**) and a rectangular cover
- When a 3 in. concrete pour is required the insert is removed and requires the finished floor type to be carpet or another engineered floor type

Includes:

- Eight removable knock-out plates (1 per center device, 2 per gang) can be replaced with 2 in. zinc conduit hub (**CFBHUB2**) when needed
- A ½ in. plastic cover insert is included and allows for easy use in tile, finished concrete or other mediums



Catalog Number	Box Type	Min.Pour Depth	Plate Depth	Device Volume	Cover Series	Knockouts
CFB6G30	Standard	3 in.	2 ½ in.	33 cu. in./	610G	½ in. to 2 in.*
CFB6G30CR	On-grade			89 cu. in		

CFB6G30R Series – Round Covers for 3 ¾ in. Minimum Pour

- Designed for applications requiring up to 2 in. conduits (with use of **CFBHUB2**) and a round cover
- Minimum concrete pour of 3 ¾ in. and includes a collar for post pour adjustment of ¼ in.
- Suitable for all floor finish types

Includes:

- Eight removable knock-out plates (1 per center device, 2 per gang) can be replaced with 2 in. zinc conduit hub (**CFBHUB2**) when needed



Catalog Number	Box Type	Min.Pour Depth	Plate Depth	Device Volume	Cover Series	Knockouts
CFB6G30R	Standard	3 ¾ in.	2 ½ in.	33 cu. in./	CFBS1R8	½ in. to 2 in.*
CFB6G30RCR	On-grade			89 cu. in		

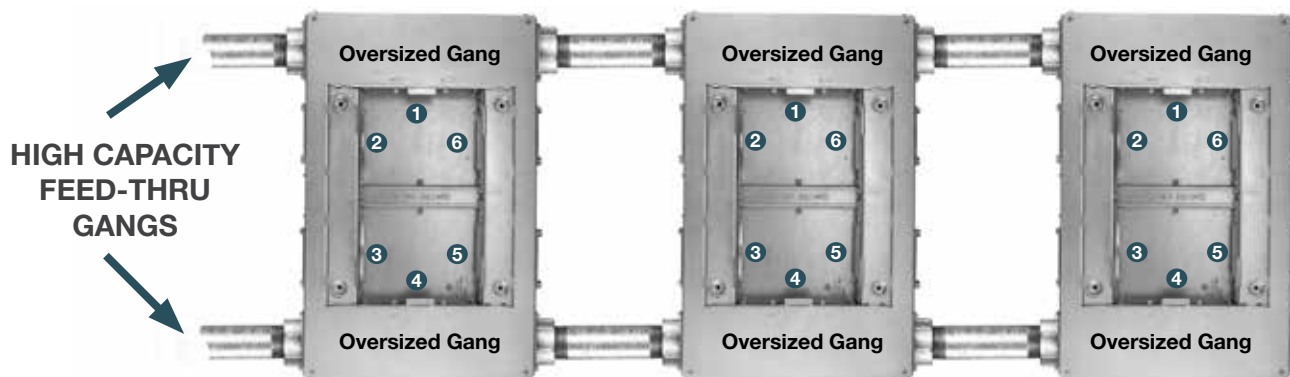
* 2 in. conduits require the use of **CFBHUB2** (purchased separately). See page 17.

Oversized Gangs

The 6-Gang floor box provides:

- Two (2) high capacity feed-thru gangs - allow for extra capacity when pulling wires or cables for a run of boxes. Only one gang is needed when feeding a single service.
- Four (4) standard gangs - allow for maximum flexibility in configuring the box.

Note: Each box has a total of 6 1-Gang positions as shown below.



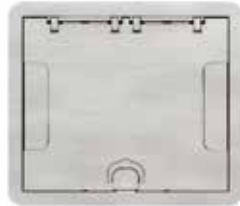
Hubbell SystemOne 6-Gang Covers

UL 514A Listed 

Surface Style Rectangular Covers (for use with carpet, tile, VCT and other engineered floors)

- Compatible with **CFB6G30** and **CFB6G30CR**
- Cover dimensions 11 ½ in. x 10 in. and two large cable egress doors and access 180° opening
- Maximum static load of 1500 lbs. with 2x safety factor*

Finish	Flush Surface	With Insert
Aluminum Powder Coated	610GCCVRALU	610GCCVRALUC
Black Powder Coated	610GCCVRBK	610GCCVRBKC
Brass Powder Coated	610GCCVRBRS	610GCCVRBRSC
Bronze Powder Coated	610GCCVRBRZ	610GCCVRBRZC
Satin Nickel Powder Coated	610GCCVRNK	610GCCVRNKC



Flush Style Rectangular Covers (for use with tile, finished concrete and Terrazzo floors)

- Compatible with **CFB6G30** and **CFB6G30CR**
- Cover dimensions 10 ½ in. x 9 in. and two large cable egress doors and access 180° opening
- Maximum static load of 1500 lbs. with 2x safety factor*

Finish	Flush Surface	With Insert
Aluminum Powder Coated	610GTCVRALU	610GTCVRALUC
Black Powder Coated	610GTCVRBK	610GTCVRBKC
Brass Powder Coated	610GTCVRBRS	610GTCVRBRSC
Bronze Powder Coated	610GTCVRBRZ	610GTCVRBRZC
Satin Nickel Powder Coated	610GTCVRNK	610GTCVRNKC



Round Covers (for use with all floor types)

- Compatible with **CFB6G30R** and **CFB6G30RCR**
- Cover has a 9 ½ in. outer diameter and two large cable egress doors and access 180° opening
- Maximum static load of 1000 lbs. with 2x safety factor*

Finish	Flush Surface
Brushed Aluminum	CFBS1R8CVRALU
Black Powder Coated	CFBS1R8CVRBLK
Brass Plated	CFBS1R8CVRBRS
Bronze Plated	CFBS1R8CVRBRZ
Satin Nickel Plated	CFBS1R8CVRNKL



* Load applied through a 3 in. (76mm) mandrel in center of the cover.

Hubbell SystemOne 6-Gang Plates and Accessories



Plates for use in 2-, 4- and 6-Gang Floor Boxes

- UL 514A listed

Plate Style	(1) Decorator Opening	(1) Duplex Opening	(2) Extron® MAAP Openings	(2) Extron® Openings
Cat. No.	FBMPREC	FBMPDUP	FBMPMAAP	FBMPAAP
Plate Style	(2) 1U Hubbell iStation Openings	(1) 1.5U Hubbell iStation Opening	(1) Simplex Opening 1.40 in. Diameter	(1) Twist-Lock® Opening 1.60 in. Diameter
Cat. No.	FBMP2IM	FBMP15IM	FBMP139	FBMP156
Plate Style	1-Gang Blank	Cable Feed Through with Bushing	(1) Opening for TracJack® or Series II®	(1) Opening with Hubbell ISF6 Frame for Keystone Jacks
Cat. No.	FBMPBNK	FBMPFT	FBMPTRAC	FBMP6KS

Pre-Wired Device Plates

- Reduces wiring and installation times
- 8 in. stranded leads mounted to the face plate

Description	Type	15A	20A
Duplex, Gray	Standard Tamper-Resistant	PWFBMPCR15GRY PWFBMPCR15GRYTR	PWFBMPCR20GRY PWFBMPCR20GRYTR
Decorator, Gray	Standard Tamper-Resistant	PWFBMPDR15GRY PWFBMPDR15GRYTR	PWFBMPDR20GRY PWFBMPDR20GRYTR



Accessories

Description		Catalog Number
2 in. threaded zinc hub for use with CFB2G30 , CFB4G30 and CFB6G30 series floor boxes; replaces CFBKOPLATE		CFBHUB2
Replacement knock-out plate	Standard Epoxy Coating	CFBKOPLATE CFBKOPLATECR
Replacement wire-way, used to pass wires from one compartment to the other, for use in rectangular boxes	CFB4G30/CR	CFB46WW
Finished floor height adjustment ring - increase post pour adjustment; use with CFBS1R8 cover series	0 - ¼ in. ¼ in. - ½ in. ½ in. - ¾ in.	CFB8RCVRR1* CFB8RCVRR2 CFB8RCVRR3
Replacement low voltage divider		CFB46DIV



*Included with standard **CFB6G30R** series.

Extron® is a registered trademark of Extron Electronics.
Crestron® is a registered trademark of Crestron Electronics, Inc.
FSR® is a registered trademark of FSR Inc.
TracJack®, Series II® and Ortronics® are registered trademarks of Ortronics/Legrand.

Hubbell SystemOne 10-Gang Recessed Concrete Floor Box

With maximum capacity in a small footprint, the 10-Gang box provides a uniform look with rectangular or round covers that are available in several finishes to complement existing décor. Electrical devices are mounted vertically and are mounted to the plate prior to securing it to the box. Two inch knockouts are designed into each box allowing for simple installation of AV cables with pre-connectorized heads and specific bend radius requirements.

Cover

- 180° cover opening
- Two large cable egress doors
- Listed to UL 514A and UL scrub water compliant
- Die cast aluminum cover construction
- Available with round or rectangular covers
- All covers are ADA compliant
- Post pour adjustment



Box

- Minimum pour depths of 5 ½ in. to 6 ¼ in.
- 16 gauge galvanized sheet metal construction
- Optional fusion-bonded, green epoxy paint for on-grade use
- 6 in. solid conductor ground pigtail in each gang
- Pre pour adjustment
- Meets UL 514A requirements and are scrub water compliant

CR version is coated with fusion-bonded epoxy paint to help prevent corrosion and intended for on-grade use.

Hubbell SystemOne 10-Gang Floor Boxes



CFB10G55 Series – Rectangular Covers for 5 ½ in. Minimum Pour

- Designed for applications requiring up to 2 in. conduits (integrated 2 in. knockouts) and a rectangular cover
- When a 5 ½ in. concrete pour is required the insert is removed and requires the finished floor type to be carpet or another engineered floor type

Includes:

- A ½ in. plastic cover insert is included and allows for easy use in tile, finished concrete or other mediums

Catalog Number	Box Type	Min.Pour Depth	Plate Depth	Device Volume	Cover Series	Knockouts
CFB10G55 CFB10G55CR	Standard On-grade	5 ½ in.	2 ½ in.	33 cu. in./ 89 cu. in	610G	¾ in. to 2 in.



CFB10G55R Series – Round Covers for 6 ¼ in. Minimum Pour

- Designed for applications requiring up to 2 in. conduits (integrated 2 in. knockouts) and a round cover
- Minimum concrete pour of 6 ¼ in. and includes a collar for post pour adjustment of ¼ in.
- Suitable for all floor finish types

Catalog Number	Box Type	Min.Pour Depth	Plate Depth	Device Volume	Cover Series	Knockouts
CFB10G55R CFB10G55RCR	Standard On-grade	6 ¼ in.	2 ½ in.	33 cu. in./ 89 cu. in	CFBS1R8	¾ in. to 2 in.

Plate Layout - NEC® Required Volume

CFB10NEMA46	148 cu. in.				
CFB10NEMA	68 cu. in.			80 cu. in.	
Standard layout	25 cu. in.	48 cu. in.		71 cu. in.	
	1	2	3	4	5
Standard layout	25 cu. in.	48 cu. in.		71 cu. in.	
CFB10NEMA	68 cu. in.			80 cu. in.	
CFB10NEMA4G	148 cu. in.				



CFB10NEMA



CFB10NEMA4G

Hubbell SystemOne 10-Gang Covers

UL 514A Listed 

Surface Style Rectangular Covers (for use with carpet, tile, VCT and other engineered floors)

- Compatible with **CFB10G55** and **CFB10G55CR**
- Cover dimensions 11 ½ in. x 10 in. and two large cable egress doors and access 180° opening
- Maximum static load of 1500 lbs. with 2x safety factor*

Finish	Flush Surface	With Insert
Aluminum Powder Coated	610GCCVRALU	610GCCVRALUC
Black Powder Coated	610GCCVRBK	610GCCVRBKC
Brass Powder Coated	610GCCVRBRS	610GCCVRBRSC
Bronze Powder Coated	610GCCVRBRZ	610GCCVRBRZC
Satin Nickel Powder Coated	610GCCVRNK	610GCCVRNKC



Flush Style Rectangular Covers (for use with tile, finished concrete and Terrazzo floors)

- Compatible with **CFB10G55** and **CFB10G55CR**
- Cover dimensions 10 ½ in. x 9 in. and two large cable egress doors and access 180° opening
- Maximum static load of 1500 lbs. with 2x safety factor*

Finish	Flush Surface	With Insert
Aluminum Powder Coated	610GTCVRALU	610GTCVRALUC
Black Powder Coated	610GTCVRBK	610GTCVRBKC
Brass Powder Coated	610GTCVRBRS	610GTCVRBRSC
Bronze Powder Coated	610GTCVRBRZ	610GTCVRBRZC
Satin Nickel Powder Coated	610GTCVRNK	610GTCVRNKC



Round Covers (for use with all floor types)

- Compatible with **CFB10G55R** and **CFB10G55RCR**
- Cover has a 9 ½ in. outer diameter and two large cable egress doors and access 180° opening
- Maximum static load of 1000 lbs. with 2x safety factor*

Finish	Flush Surface
Brushed Aluminum	CFBS1R8CVRALU
Black Powder Coated	CFBS1R8CVRBLK
Brass Plated	CFBS1R8CVRBRS
Bronze Plated	CFBS1R8CVRBRZ
Satin Nickel Plated	CFBS1R8CVRNKL



* Load applied through a 3 in. (76mm) mandrel in center of the cover.

Hubbell SystemOne 10-Gang Plates and Accessories



CFB10 Series – Plates

Plate Style	(1) Decorator Opening	(1) Duplex Opening	Blank	Decorator Opening Plate Including Hubbell ISF6GY	(2) Openings to Accommodate (6) Ortronics TrackJack®
Cat. No.	FB10MPREC	FB10MPDUP	FB10MPBNK	FB10MPKEY	FB10MPTRAC



Plate Style	(2) Decorator	(4) Extron® MAAAP Modules	(4) Extron® AAP Modules	For (6) 1U Hubbell iStation Modules	Replacement Spacer Around Wire-Way
Cat. No.	FB10MP2A	FB10MPMAAP	FB10MPAAP	FB10MP2B	FB10MPX



Plate Style	(1) Twist-Lock® Opening 1.60 in. Dia. (Uses 2 Gangs)	(1) Simplex Opening 1.40 in. Dia. (Uses 2 Gangs)	(2) Twist-Lock® Opening 1.60 in. Dia. (Uses 3 Gangs)	(2) Simplex Opening 1.40 in. Dia. (Uses 3 Gangs)
Cat. No.	FB10TLA	FB10TLX	FB10TLB	FB10TLY



Plate Style	(3) Twist-Lock® Opening 1.60 in. Dia. (Uses 5 Gangs)	(3) Simplex Opening 1.40 in. Dia. (Uses 5 Gangs)	(2) 2-Gang. Meets NEMA Spacing. Ideal for Crestron® DM –TX Product and Power	(4) Single Service Openings Utilizing NEMA Wallplate (Uses 5 Gangs)
Cat. No.	FB10TLC	FB10TLZ	CFB10NEMA	FB10MPNEMA4G



Pre-Wired Device Plates

- Reduces wiring and installation times
- 8 inch stranded leads mounted to the face plate

Description	Type	15A	20A
Duplex, Gray	Standard	PWFBMPCR15GRY	PWFBMPCR20GRY
	Tamper-Resistant	PWFBMPCR15GRYTR	PWFBMPCR20GRYTR
Decorator, Gray	Standard	PWFBMPDR15GRY	PWFBMPDR20GRY
	Tamper-Resistant	PWFBMPDR15GRYTR	PWFBMPDR20GRYTR



Accessories

Description	Catalog Number
Replacement wire-way, used to pass wires from one compartment to the other, for use in CFB10G55/CR rectangular boxes	CFB10WW
Replacement low voltage divider	CFB10DIV
Finished floor height adjustment ring - increase post pour adjustment; use with CFB10G30R cover series	0 - ¼ in. CFB8RCVRR1*
	¼ in. - ½ in. CFB8RCVRR2
	½ in. - ¾ in. CFB8RCVRR3



*Included with standard **CFB10G30R** series.

Extron® is a registered trademark of Extron Electronics.
 Crestron® is a registered trademark of Crestron Electronics, Inc.
 FSR® is a registered trademark of FSR Inc.
 TracJack®, Series II® and Ortronics® are registered trademarks of Ortronics/Legrand.

Selecting a Raised Access Floor Box

To assist with the floor box selection process please have the following information available:

Electrical requirements:	Box depth	Cover style:
Power (each electrical device requires one gang) Data/AV (consult manufacturers' specification for size/volume requirements), number required. Add up total number to determine needed capacity. If necessary capacity is not shown round up to next size. Example: 9-Gang rounds up to a 10-Gang floor box.	Determine maximum tile thickness and station height and add together. Box depth can not exceed total.	Round Rectangular

Once this information is gathered start on the right column "capacity" select necessary box, then select the concrete pour depth and on-grade or above-grade application, and finally cover style. Locate interconnecting point of all three categories and move to right to select correct catalog number.

- ① Capacity: Select necessary box.
- ② Box Depth: Determine maximum possible depth (tile and station height total) and select a depth less than the calculated height.
- ③ Cover Style: Select Round or Rectangular, not all box sizes are available in round.
- ④ Locate interconnecting point of all three categories and move to right to select correct catalog number.

		Box Depth ②						
		2 ½ in.	3 in.	2 ½ in.	5 in.	5 ½ in.	6 ¼ in.	
Capacity ①	2-Gang			•				AFB2G25
				•				AFB2G25CHI
					•			AFB2G50
					•			AFB2G50CHI
	4-Gang	•						AFB4G25
		•						AFB4G25CHI
			•					AFB4G50
			•					AFB4G50CHI
							•	RAFB4BASE
	10-Gang					•		AFB10G55
						•		AFB10G55CHI
			Rectangular	Rectangular	Furniture Feed	Furniture Feed	Rectangular	Round
		Cover Style ③						

Select Correct Catalog Number ④



Benefits and Enhancements

Safety

- Low profile flanges meet ADA requirements
- Hide-away egress door fold under cover while in use
- 180° opening of main doors

Functionality

- Cables and connections are protected by recessed functionality
- Open architecture sub-plate design
- Dirt ingress reduced by egress door brushes
- Meets UL 514A scrub water requirements with ScrubShield[®] technology
- Easy selection with common flange for all floor types
- Round and rectangular box versions available

Value

- Enhance building décor with numerous finishes
- Increase durability and longevity with cast aluminum covers

Online Resources

- BIM models, customer drawings and technical specifications are available on www.hubbell-wiring.com



Visit web site for information on Hubbell's Pre-wired, Plug and Play, Connexion[®] System.

Hubbell SystemOne 2-Gang Rectangular Raised Access Floor Box

Ideal for applications that call for basic power and data/AV requirements. The 2-Gang boxes can be used as an access point to electrical or data connections, or as a furniture feed to power interior furniture partitions. Available in two box depths, the 2 ½ in. depth works well in floors using short pedestals; the 5 in. depth is ideal for furniture feed applications. The rectangular covers are available in assorted finishes to enhance any design scheme.

Cover

- 180° cover opening
- Two large cable egress doors
- Listed to UL 514A and UL scrub water compliant
- Die cast aluminum cover construction
- All covers are ADA compliant
- Furniture feed covers available



Box

- 16 gauge galvanized sheet metal construction
- 6 in. solid conductor ground pigtail in each gang
- 2 ½ in. or 5 in. box depths
- 5.0 in. deep box allows for 2 in. conduits
- Mounts in tiles ¼ in. to 2 in. thick
- Fits in 6 ¾ in. x 12 7/8 in. opening
- Patent pending, labor saving, easy mount device plates

2-Gang Rectangular Floor Boxes, Covers and Plates



AFB2G Series – Rectangular Box

- Designed for wood and tile applications
- 5 in. deep box allows for 2 in. conduits - ideal for furniture feed applications
- 2 ½ in. provides a solution for floors using short pedestals



Catalog Number	Box Type	Knockouts	Box Depth	Max Tile Thickness	Plate Depth	Device Volume	Cover Series
AFB2G50	Standard	½ in. to 2 in.	5 in.	2 in.	2 ½ in.	60 cu. in.	2GAFB
AFB2G50CHI	Chicago	None					
AFB2G25	Standard	½ in. and ¾ in.	2 ½ in.	2 in.	2 ½ in.	30 cu. in.	2GAFB
AFB2G25CHI	Chicago	None					

Rectangular Covers (for use with raised access tiles and wood floors)

- Die cast construction available in five finishes
- UL 514A listed
- Furniture feed includes one 2 in. conduit hub and one 1 in. conduit hub with reducer to ¾ in.
- Maximum static load of 800 lbs with 2x safety factor*



Finish	Surface Style Cover	Surface Style Cover with Insert	Furniture Feed Cover
Aluminum Powder Coated	2GAFBCVRLU	2GAFBCVRLUC	2GAFBFFCVRALU
Black Powder Coated	2GAFBCVRBK	2GAFBCVRBK C	2GAFBFFCVRBK
Brass Powder Coated	2GAFBCVRBRS	2GAFBCVRBRS C	2GAFBFFCVRBRS
Bronze Powder Coated	2GAFBCVRBRZ	2GAFBCVRBRZ C	2GAFBFFCVRBRZ
Satin Nickel Powder Coated	2GAFBCVRNK	2GAFBCVRNK C	2GAFBFFCVRNK

* Load applied through a 3 in. (76mm) mandrel in center of the cover.

Plates - for use in 2, 4 and 6-Gang Floor Boxes

- UL 514A listed

Plate Style	(1) Decorator Opening	(1) Duplex Opening	(2) Extron® MAAP Openings	(2) Extron® Openings
Cat. No.	FBMPREC	FBMPDUP	FBMPMAAP	FBMPAAP



Plate Style	(2) 1U Hubbell iStation Openings	(1) 1.5U Hubbell iStation Opening	(1) Simplex Opening 1.40 in. Diameter	(1) Twist-Lock® Opening 1.60 in. Diameter
Cat. No.	FBMP2IM	FBMP15IM	FBMP139	FBMP156



Plate Style	1-Gang Blank	Cable Feed Through with Bushing	(1) Opening for TracJack® or Series II®	(1) Opening w/ Hubbell ISF6 Frame for Keystone Jacks
Cat. No.	FBMPBNK	FBMPFT	FBMPTRAC	FBMP6KS



Extron® is a registered trademark of Extron Electronics.
 Crestron® is a registered trademark of Crestron Electronics, Inc.
 FSR® is a registered trademark of FSR Inc.
 TracJack®, Series II® and Ortronics® are registered trademarks of Ortronics/Legrand.

Hubbell SystemOne 4-Gang Rectangular Raised Access Floor Box

The Hubbell SystemOne 4-Gang Recessed Raised Access Floor Box delivers AV plus power. Similar to the 2-Gang recessed raised access floor box, the 4-Gang 2 ½ inch box depth provides a solution for floors using short pedestals. The 5 inch depth is ideal for applications with a lot of requirements. Rectangular covers in a variety of finishes will match any existing or new style.

Cover

- 180° cover opening
- Two large cable egress doors
- Listed to UL 514A and UL scrub water compliant
- Die cast aluminum cover construction
- All covers are ADA compliant



Box

- 16 gauge galvanized sheet metal construction
- 6 in. solid conductor ground pigtail in each gang
- 2 ½ in. or 5 in. box depths
- 5.0 in. deep box allows for 2 in. conduits
- Mounts in tiles ¾ in. to 2 in. thick
- Fits in 11 in. x 11 in. opening
- Patent Pending, labor saving, easy mount device plates

4-Gang Floor Rectangular Boxes, Covers and Plates



AFB4G Series – Rectangular Box

- Designed for wood and tile applications
- 2 ½ in. provides a solution for floors using short pedestals
- 5 in. deep box allows for 2 in. conduits - ideal for furniture feed applications

Catalog Number	Box Type	Knockouts	Box Depth	Max Tile Thickness	Plate Depth	Device Volume	Cover Series
AFB4G50	Standard	½ in. to 2 in.	5 in.	2 in.	2 ½ in.	57.5 cu. in.	4GAFB
AFB4G50CHI	Chicago	None					
AFB4G25	Standard	½ in. and ¾ in.	2 ½ in.	2 in.	2 ½ in.	26.5 cu. in.	4GAFB
AFB4G25CHI	Chicago	None					



Rectangular Covers (for use with raised access tiles and wood floors)

- Die cast construction available in five finishes
- UL 514A listed
- Maximum static load of 1500 lbs with 2x safety factor*

Finish	Surface Style Cover	Surface Style Cover with Insert
Aluminum Powder Coated	4GAFBCVRLU	4GAFBCVRLUC
Black Powder Coated	4GAFBCVRBK	4GAFBCVRBKC
Brass Powder Coated	4GAFBCVRBRS	4GAFBCVRBRSC
Bronze Powder Coated	4GAFBCVRBRZ	4GAFBCVRBRZC
Satin Nickel Powder Coated	4GAFBCVRNK	4GAFBCVRNKC

* Load applied through a 3 in. (76mm) mandrel in center of the cover.



Plates for use in 2, 4 and 6-Gang Floor Boxes

- UL 514A listed

Plate Style	(1) Decorator Opening	(1) Duplex Opening	(2) Extron® MAAP Openings	(2) Extron® Openings
Cat. No.	FBMPREC	FBMPDUP	FBMPMAAP	FBMPAAP
Plate Style	(2) 1U Hubbell iStation Openings	(1) 1.5U Hubbell iStation Opening	(1) Simplex Opening 1.40 in. Diameter	(1) Twist-Lock® Opening 1.60 in. Diameter
Cat. No.	FBMP2IM	FBMP15IM	FBMP139	FBMP156
Plate Style	1-Gang Blank	Cable Feed Through with Bushing	(1) Opening for TracJack® or Series II®	(1) Opening w/ Hubbell ISF6 Frame for Keystone Jacks
Cat. No.	FBMPBNK	FBMPFT	FBMPTRAC	FBMP6KS

Extron® is a registered trademark of Extron Electronics.
 Crestron® is a registered trademark of Crestron Electronics, Inc.
 FSR® is a registered trademark of FSR Inc.
 TracJack®, Series II® and Ortronics® are registered trademarks of Ortronics/Legrand.


Hubbell SystemOne 4-Gang Round Raised Access Floor Box

With an 8 in. diameter, the Hubbell SystemOne 4-Gang Round Recessed Floor Box is ideal for use in raised access floors with pre-cut tile or wood floor coverings. With a variety of finish selections, the round covers blend in with the flooring and overall design of the building. Deep, 2 ¾ in. wiring compartments are ready to accommodate today's most advanced, high-performance power, data, and AV needs to supply reliable connectivity.



Incorporates four equally sized device mounting plates that accommodate NEMA devices and an array of 3rd party modules.

Cover

- 180° cover opening
- Two large cable egress doors
- UL scrub water compliant
- Die cast aluminum cover construction
- All covers are ADA compliant 



Box

- Fits in 8 in. diameter air diffuser holes
- 16 gauge galvanized sheet metal construction
- Individual grounding screws for each gang
- 2 in. knock-out on the bottom allows for large amounts of data and/or AV devices
- Mounts in tiles ¾ in. to 2 in. thick

4-Gang Round Floor Boxes, Covers and Plates



RAFB4 Series – Round Floor Box

Includes:

- Base box shipped with temporary install cover

Catalog Number	Cover Series	Depth	Tile Thickness	Plate Depth	Knockouts	Diameter
RAFB4BASE	CFBS1R8	6 ¼ in.	¼ in. - 2 in.	2 ¼ in.	¼ in. - 2 in.	8 in.



RAFB4 Series – Round Floor Box with Cover

Includes:

- **RAFB4BASE** and 8 in. cover

Cover Finish	Catalog Number
Brushed Aluminum	RAFB4ALU
Black Powder Coated	RAFB4BLK
Brass Plated	RAFB4BRS
Bronze Plated	RAFB4BRZ
Satin Nickel Plated	RAFB4NKL



RAFB4 Series – Plates

- All **RAFB4SP** series plates are powder coated white

Plate Style	(1) Decorator	(1) Duplex	Blank
Cat. No.	RAFB4SPDECO	RAFB4SPDUPLEX	RAFB4SPBLANK
Plate Style	(1) Simplex Opening 1.40 in. Dia.	(1) Twist-Lock® Opening 1.60 in. Diameter	(1) Hubbell iStation Opening for 3 Units
Cat. No.	RAFB4SPTL14	RAFB4SPTL16	RAFB4SP3UIS
Plate Style	Opening to Accept Bezels for Ortronics TracJack®	(3) Extron® MAAP Modules	(2) Extron® AAP Modules
Cat. No.	RAFB4SPORT	RAFB4SP3MAAP	RAFB4SP2AAP



Extron® is a registered trademark of Extron Electronics.
 Crestron® is a registered trademark of Crestron Electronics, Inc.
 FSR® is a registered trademark of FSR Inc.
 TracJack®, Series II® and Ortronics® are registered trademarks of Ortronics/Legrand.



Hubbell SystemOne 10-Gang Rectangular Raised Access Floor Box

Designed to serve high-capacity, multi-service applications, the 10-Gang floor box supports installation with an array of Hubbell power, data and AV devices. Third-party mounting plates are available for other manufacturers' devices, including FSR®, Crestron® and Extron®. A 5 ½ in. box depth offers great capacity for connectivity, with the ability accept 2 in. conduit to meet growing AV and data needs. The rectangular covers come in a variety of colors and finishes to enhance any building's design.

Cover

- 180° cover opening
- Two large cable egress doors
- Listed to UL 514A and UL scrub water compliant
- Die cast aluminum cover construction
- All covers are ADA compliant



Box

- 16 gauge galvanized sheet metal construction
- 6 in. solid conductor ground pigtail in each gang
- 5 ½ in. deep box allows for 2 in. conduits
- Mounts in tiles ¾ in. to 2 in. thick
- Fits in 11 in. x 11 in. opening



10-Gang Floor Rectangular Boxes, Covers and Plates



AFB10G Series – Rectangular Box

- Designed for wood and tile applications
- 5 1/2 in. deep box allows for 2 in. conduits - ideal for furniture feed applications

Catalog Number	Box Type	Knockouts	Box Depth	Max Tile Thickness	Plate Depth	Device Volume	Cover Series
AFB10G55	Standard	1/2 in. to 2 in.	5.5 in.	2.0 in.	2.5 in	57.5 cu. in.	10GAFB
AFB10G55CHI	Chicago	None					



Rectangular Covers (for use with raised access tiles and wood floors)

- Die cast construction available in five finishes
- UL 514A listed
- Maximum static load of 1500 lbs with 2x safety factor*

Finish	Surface Style Cover	Surface Style Cover with Insert
Aluminum Powder Coated	10GAFBCVRALU	10GAFBCVRALUC
Black Powder Coated	10GAFBCVRBK	10GAFBCVRBKC
Brass Powder Coated	10GAFBCVRBRS	10GAFBCVRBRSC
Bronze Powder Coated	10GAFBCVRBRZ	10GAFBCVRBRZC
Satin Nickel Powder Coated	10GAFBCVRNK	10GAFBCVRNKC

* Load applied through a 3 in. (76mm) mandrel in center of the cover.



RAFB10 Series – Plates

Plate Style	(1) Decorator Opening	(1) Duplex Opening	Blank	Decorator Opening Plate Including Hubbell ISF6GY	(2) Openings to Accommodate (6) Ortronics TrackJack®
Cat. No.	FB10MPREC	FB10MPDUP	FB10MPBNK	FB10MPKEY	FB10MPTRAC



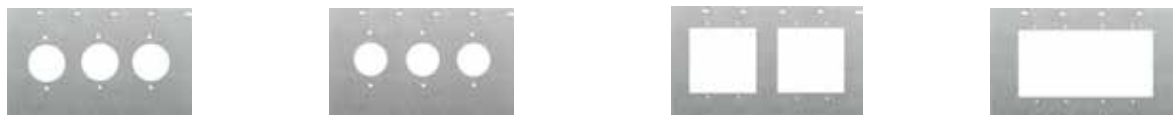
Plate Style	(2) Decorator Openings	(4) Extron® MAAP Modules	(4) Extron® AAP Modules	For (6) 1U Hubbell iStation Modules	Replacement Spacer Around Wire-Way
Cat. No.	FB10MP2A	FB10MPMAAP	FB10MPAAP	FB10MP2B	FB10MPX



Plate Style	(1) Twist-Lock® Opening 1.60 in. Dia. (Uses 2 Gangs)	(1) Simplex Opening 1.40 in. Dia. (Uses 2 Gangs)	(2) Twist-Lock® Opening 1.60 in. Dia. (Uses 3 Gangs)	(2) Simplex Opening 1.40 in. Dia. (Uses 3 Gangs)
Cat. No.	FB10TLA	FB10TLX	FB10TLB	FB10TLY



Plate Style	(3) Twist-Lock® Opening 1.60 in. Dia. (Uses 5 Gangs)	(3) Simplex Opening 1.40 in. Dia. (Uses 5 Gangs)	(2) 2-Gang. Meets NEMA Spacing. Ideal for Crestron® DM –TX Product and Power	(4) Single Service Openings Utilizing NEMA Wallplate (Uses 5 Gangs)
Cat. No.	FB10TLC	FB10TLZ	CFB10NEMA	FB10MPNEMA4G



Extron® is a registered trademark of Extron Electronics.
 Crestron® is a registered trademark of Crestron Electronics, Inc.
 FSR® is a registered trademark of FSR Inc.
 TracJack®, Series II® and Ortronics® are registered trademarks of Ortronics/Legrand.



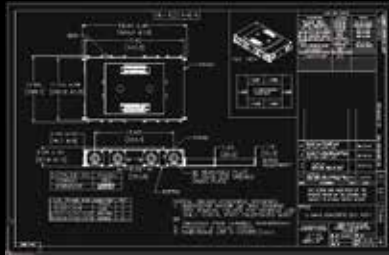
HUBBELL SystemOne

Online Resources



BIM Models

Visit www.hubbell-wiring.com or seek.autodesk.com to download all Hubbell Wiring device BIM Models.



Customer and Technical Drawings

Customer and technical drawings and installation instructions can be downloaded at www.hubbell-wiring.com.



Delivery Systems eTour

This interactive, virtual tour of a city demonstrates where and how Hubbell products can be deployed in the floor, through the floor, on the wall, on the surface and from floor to ceiling and demonstrates solutions in these spaces. Visit www.hubbell-wiring.com to take the tour.

Available Literature

Hubbell offers an extensive literature library for product support. Downloadable PDFs are available online.



Hubbell SystemOne Recessed 4, 6 and 8-Inch Fire-Rated Poke-Throughs



Hubbell SystemOne Selector Wheel

HUBBELL[®]
Wiring Systems

www.hubbell-wiring.com
www.hubbell-premise.com



Hubbell Wiring Device-Kellems
Hubbell Incorporated (Delaware)
40 Waterview Drive, Shelton, CT 06484
Phone (800) 288-6000 • FAX (800) 255-1031

Hubbell Premise Wiring
Hubbell Incorporated (Delaware)
23 Clara Drive, Suite 103, Mystic, CT 06355
Phone (800) 626-0005 • FAX (860) 535-8328