

PROJECT: _____	UNIT TAG: _____	QUANTITY: _____
REPRESENTATIVE: _____	TYPE OF SERVICE: _____	DATE: _____
ENGINEER: _____	SUBMITTED BY: _____	DATE: _____
CONTRACTOR: _____	APPROVED BY: _____	DATE: _____
	ORDER NO.: _____	DATE: _____

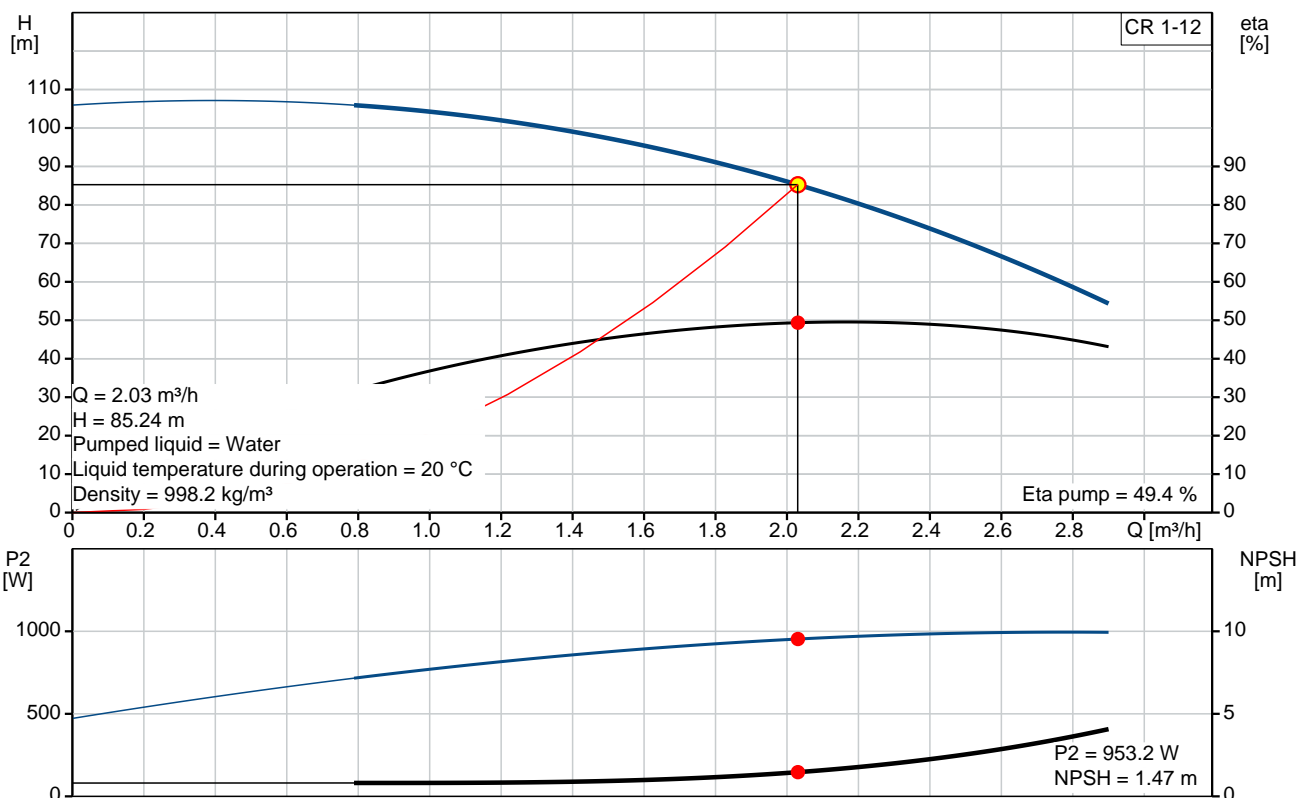


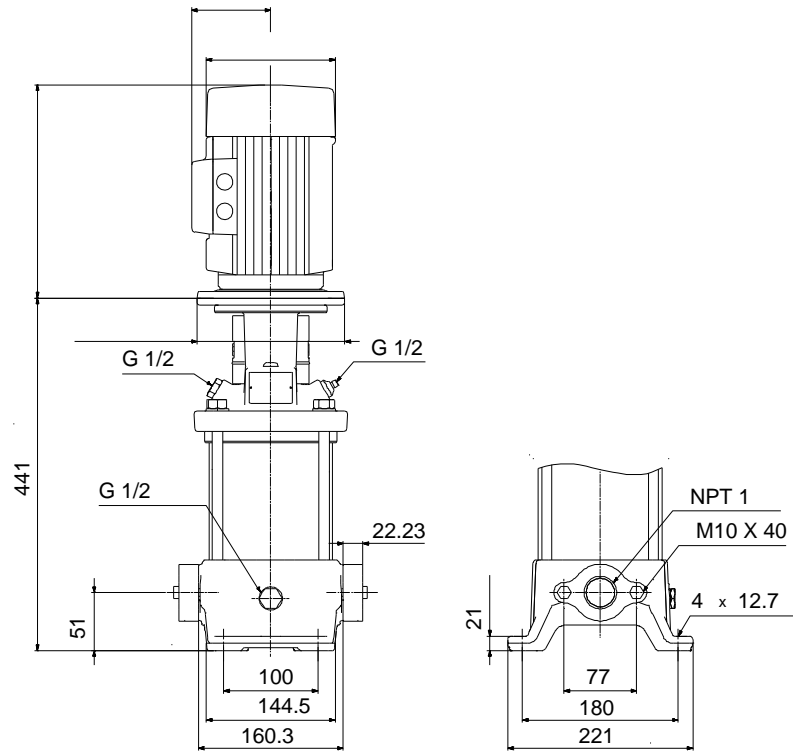
### CR 1-12

Vertical, multistage centrifugal pump with suction and discharge ports on the same level. The pump head and base are in cast iron. All other wetted parts are in stainless steel (EN 1.4301)

Note! Product picture may differ from actual product

Conditions of Service		Pump Data		Motor Data	
Flow:	2.03 m <sup>3</sup> /h	Max pressure at stated temp:	16 bar / 120 °C	Mains frequency:	60 Hz
Head:	85.24 m	Approvals:	NSF61		
Efficiency:	_____	Shaft seal:	HQQE		
Liquid:	Water	Product number:	96081961		
Temperature:	20 °C				
NPSH required:	1.47 m				
Viscosity:	_____				
Specific Gravity:	1.000				





### Materials:

Base:	Cast iron EN 1561 EN-GJL-200 ASTM A48-25B
Impeller:	Stainless steel AISI 304 EN 1.4301
Material code:	A
Code for rubber:	E

## Tender Text



Note! Product picture may differ from actual product

Product No.: [96081961](#)

### CR 1-12 A-B-A-E-HQQE

Vertical, non-self-priming, multistage, in-line, centrifugal pump for installation in pipe systems and mounting on a foundation.

The pump has the following characteristics:

- Impellers and intermediate chambers are made of
- The shaft seal has assembly length according to EN 12756.
- Power transmission is via cast iron split coupling.

#### Controls:

Frequency converter: NONE

#### Liquid:

Pumped liquid: Water

Liquid temperature during operation: 20 °C

Density: 998.2 kg/m<sup>3</sup>

#### Technical:

Speed for pump data: 3466 rpm

Actual calculated flow: 2.03 m<sup>3</sup>/h

Resulting head of the pump: 85.24 m

Pump orientation: Vertical

Shaft seal arrangement: Single

Code for shaft seal: HQQE

Approvals on nameplate: NSF61

Curve tolerance: ISO9906:2012 3B

#### Materials:

Base: Cast iron  
EN 1561 EN-GJL-200  
ASTM A48-25B

Impeller: Stainless steel  
EN 1.4301  
AISI 304

Bearing material: SIC

#### Installation:

Max pressure at stated temp: 16 bar / 120 °C



**Company name:**

**Created by:**

**Phone:**

**Date:**

21/02/2018


Type of connection: 16 bar / -20 °C  
Size of inlet connection: Oval / NPT(F)  
Size of outlet connection: 1 inch  
Pressure rating: 1 inch  
Flange size for motor: PN 16  
56C

**Electrical data:**

Motor standard: NEMA  
Power (P2) required by pump: 1.1 kW

**Others:**

Net weight: 17.3 kg  
Gross weight: 23.8 kg  
Shipping volume: 0.14 m<sup>3</sup>

Position	Qty.	Description
	1	<p><b>CR 1-12 A-B-A-E-HQQE</b></p>  <p><b>Note! Product picture may differ from actual product</b></p> <p>Product No.: <a href="#">96081961</a></p> <p>Vertical, non-self-priming, multistage, in-line, centrifugal pump for installation in pipe systems and mounting on a foundation.</p> <p>The pump has the following characteristics:</p> <ul style="list-style-type: none"> <li>- Impellers and intermediate chambers are made of</li> <li>- The shaft seal has assembly length according to EN 12756.</li> <li>- Power transmission is via cast iron split coupling.</li> </ul> <p>Controls:</p> <p>Frequency converter: NONE</p> <p><b>Liquid:</b></p> <p>Pumped liquid: Water</p> <p>Liquid temperature during operation: 20 °C</p> <p>Density: 998.2 kg/m³</p> <p><b>Technical:</b></p> <p>Speed for pump data: 3466 rpm</p> <p>Actual calculated flow: 2.03 m³/h</p> <p>Resulting head of the pump: 85.24 m</p> <p>Pump orientation: Vertical</p> <p>Shaft seal arrangement: Single</p> <p>Code for shaft seal: HQQE</p> <p>Approvals on nameplate: NSF61</p> <p>Curve tolerance: ISO9906:2012 3B</p> <p><b>Materials:</b></p> <p>Base: Cast iron EN 1561 EN-GJL-200 ASTM A48-25B</p> <p>Impeller: Stainless steel EN 1.4301 AISI 304</p> <p>Bearing material: SIC</p> <p><b>Installation:</b></p> <p>Max pressure at stated temp: 16 bar / 120 °C 16 bar / -20 °C</p> <p>Type of connection: Oval / NPT(F)</p>



Company name:

Created by:

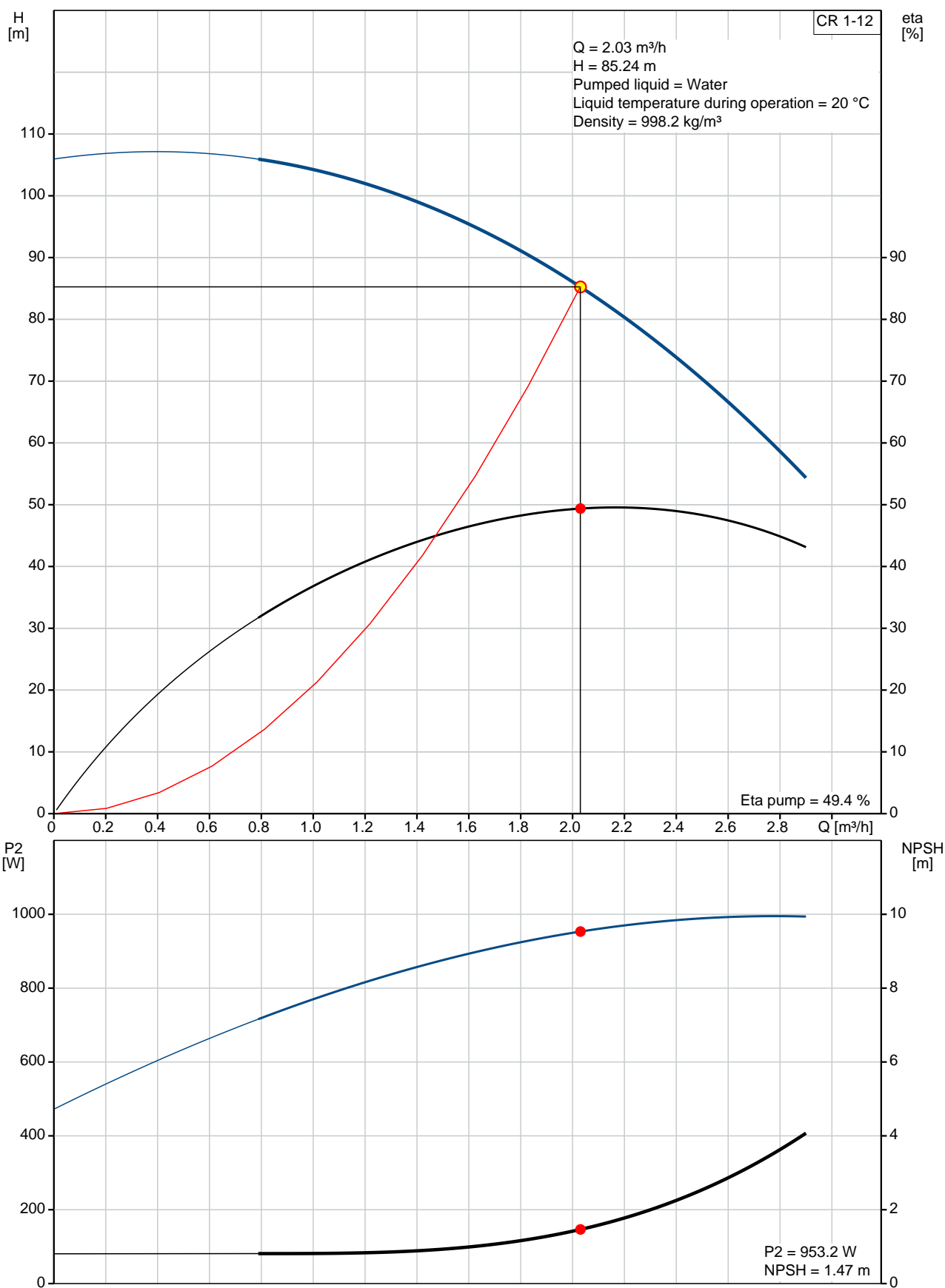
Phone:

Date:

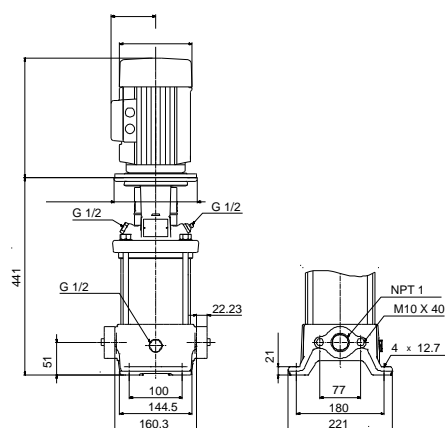
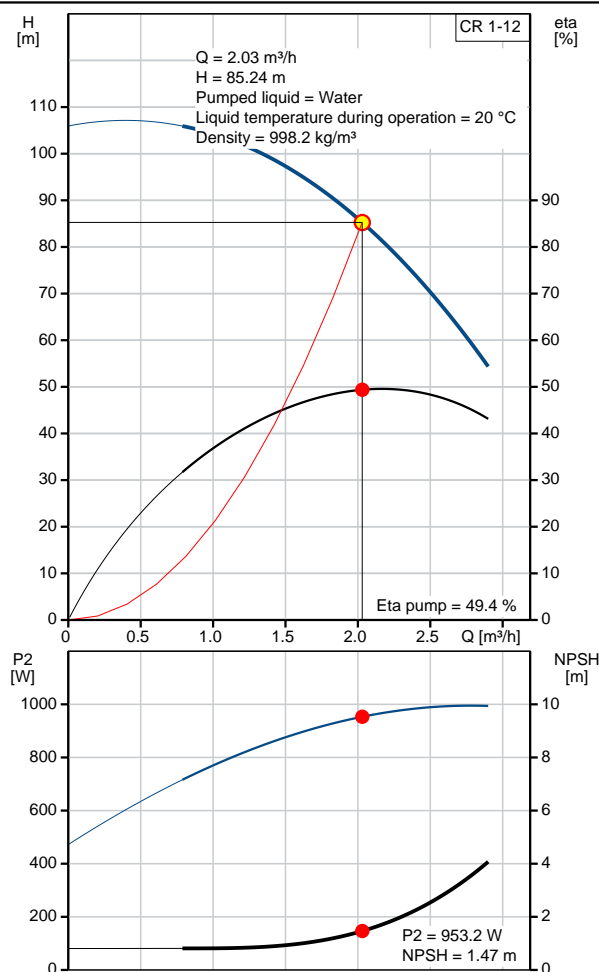
21/02/2018

Position	Qty.	Description
		Size of inlet connection: 1 inch Size of outlet connection: 1 inch Pressure rating: PN 16 Flange size for motor: 56C  <b>Electrical data:</b> Motor standard: NEMA Power (P2) required by pump: 1.1 kW  <b>Others:</b> Net weight: 17.3 kg Gross weight: 23.8 kg Shipping volume: 0.14 m <sup>3</sup>

## 96081961 CR 1-12 60 Hz



Description	Value
<b>General information:</b>	
Product name:	CR 1-12 A-B-A-E-HQQE
Product No:	96081961
EAN number:	5700395166996
<b>Technical:</b>	
Speed for pump data:	3466 rpm
Actual calculated flow:	2.03 m³/h
Resulting head of the pump:	85.24 m
Stages:	12
Impellers:	12
Low NPSH:	N
Pump orientation:	Vertical
Shaft seal arrangement:	Single
Code for shaft seal:	HQQE
Approvals on nameplate:	NSF61
Curve tolerance:	ISO9906:2012 3B
Pump version:	A
Model:	A
<b>Materials:</b>	
Base:	Cast iron EN 1561 EN-GJL-200 ASTM A48-25B
Impeller:	Stainless steel EN 1.4301 AISI 304
Material code:	A
Code for rubber:	E
Bearing material:	SIC
<b>Installation:</b>	
Max pressure at stated temp:	16 bar / 120 °C 16 bar / -20 °C
Type of connection:	Oval / NPT(F)
Connect code:	B
Size of inlet connection:	1 inch
Size of outlet connection:	1 inch
Pressure rating:	PN 16
Flange size for motor:	56C
<b>Liquid:</b>	
Pumped liquid:	Water
Liquid temperature during operation:	20 °C
Density:	998.2 kg/m³
<b>Electrical data:</b>	
Motor standard:	NEMA
Power (P2) required by pump:	1.1 kW
<b>Controls:</b>	
Frequency converter:	NONE
<b>Others:</b>	
Net weight:	17.3 kg
Gross weight:	23.8 kg
Shipping volume:	0.14 m³









Company name:

Created by:

Phone:

Date:

21/02/2018

---

**Order Data:**

Product name: CR 1-12 A-B-A-E-HQQE

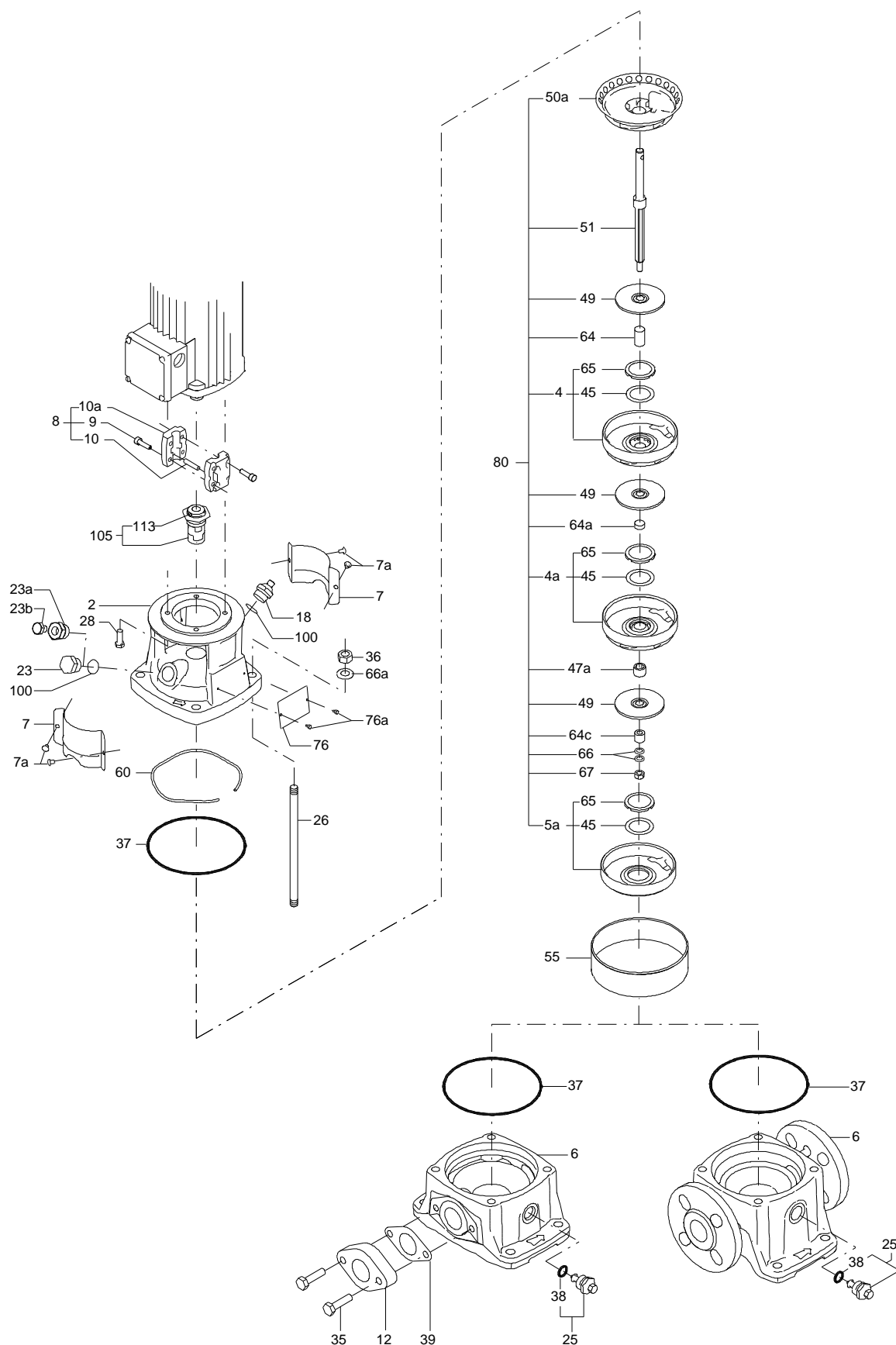
Amount: 1

Product No: 96081961

Total: Price on request

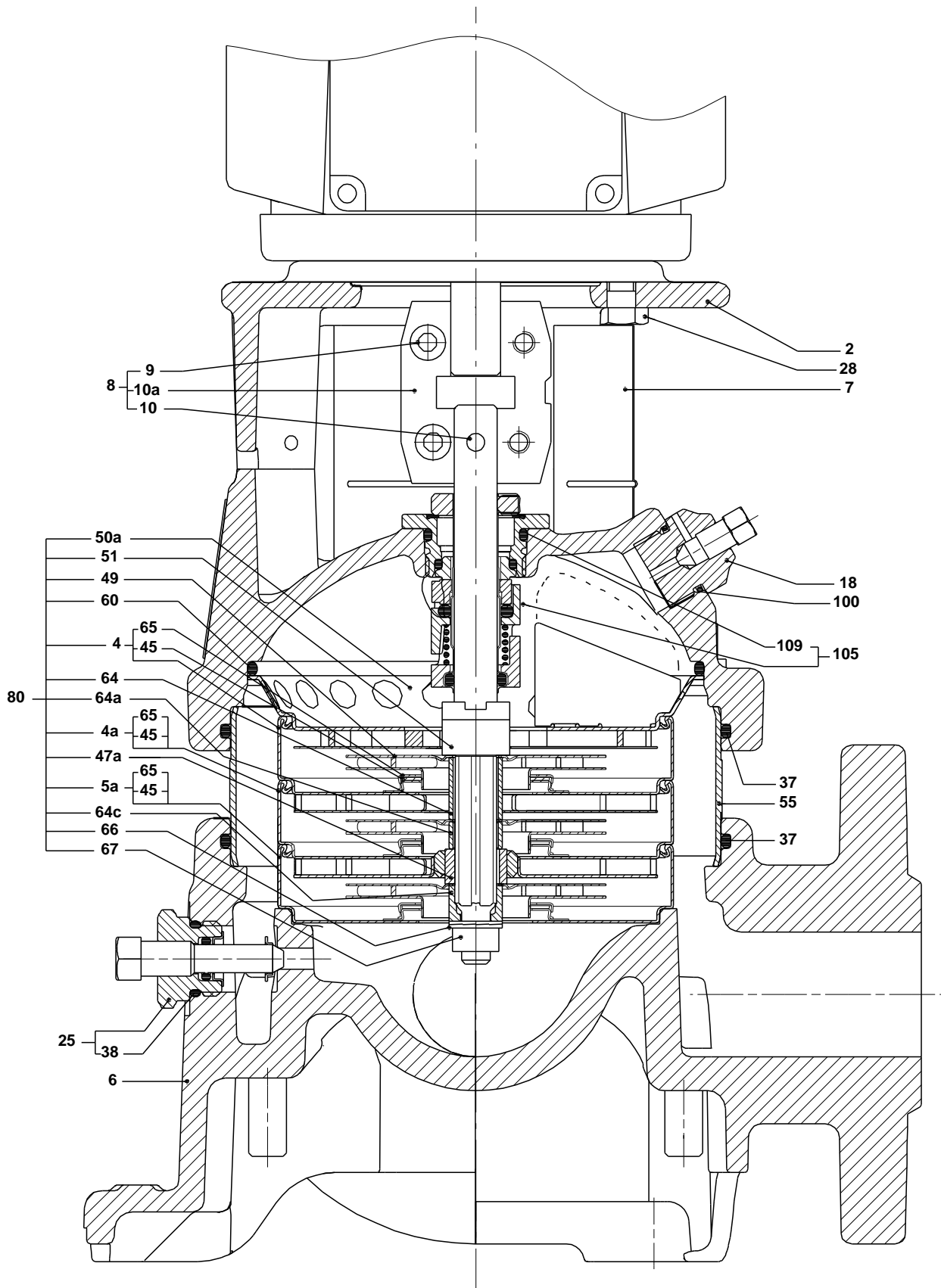
---

## Exploded view (tm020210 4100)



TM020210

## Sectional drawing (tm020211 4100)



TM020211

**Parts list CR 1-12, Product No. 96081961**
**Valid from 1.1.2004 (0401)**

Pos	Description	Annotation	Classification Data	Part no.	Qty.	Unit
-	Base cpl.				1	pcs
6	Base				1	
12	Flange				2	
35	Hex head screw		Length (mm): 40 Thread: M10		4	
37	Gasket				2	
-	Sealing parts				1	pcs
- 25	Drain plug w/bypass valve				1	
38	O-ring		Diameter: 16,3 Material type: EPDM Thickness: 2,4			
37	O-ring				2	
100	O-ring		Diameter: 16,3 Material type: EPDM Thickness: 2,4		2	
- 2	Pump head cpl.				1	pcs
2	Pump head				1	
7	Coupling guard				2	
7a	Thread cutting screw				4	
- 18	Air vent screw				1	
	Plug					
	Spindle					
- 25	Drain plug				1	
23	Pipe plug					
25	Drain plug					
28	Hex head cap screw		Length (mm): 25 Thread: UNC 3/8"		4	
60	Formed wire spring				1	
+ 8	Coupling cpl.				1	pcs
26	Staybolt		Length (mm): 241 Thread: M12		4	pcs
36a	Washer		Designation: DIN 125 A Internal diameter: 13 Outer diameter: 24 Thickness: 2,5		4	pcs
55	Outer sleeve				1	pcs
66a	Nut		Thread: M12		4	pcs
+ 80	Chamber stack				1	pcs
- 105	Shaft seal		Material type: HQQE		1	pcs
	O-ring				1	
	O-ring				1	
	Seal driver, upper				1	
	Seal driver, lower				1	
	Spacer ring				1	
	Pipe				1	
	Plug				1	
	Plug				1	
	Compression spring				1	
	Socket set screw				1	
102	O-ring		Diameter: 22,00 Material type: EPDM Thickness: 2,75		1	
103	Seal ring, stationary				1	



Company name:

Created by:

Phone:

Date: 21/02/2018

Pos	Description	Annotation	Classification Data	Part no.	Qty.	Unit
105	Seal ring, rotating				1	
107	O-ring				1	
113	Driver				1	