

PROJECT: _____	UNIT TAG: _____	QUANTITY: _____
REPRESENTATIVE: _____	TYPE OF SERVICE: _____	DATE: _____
ENGINEER: _____	SUBMITTED BY: _____	DATE: _____
CONTRACTOR: _____	APPROVED BY: _____	DATE: _____
	ORDER NO.: _____	DATE: _____

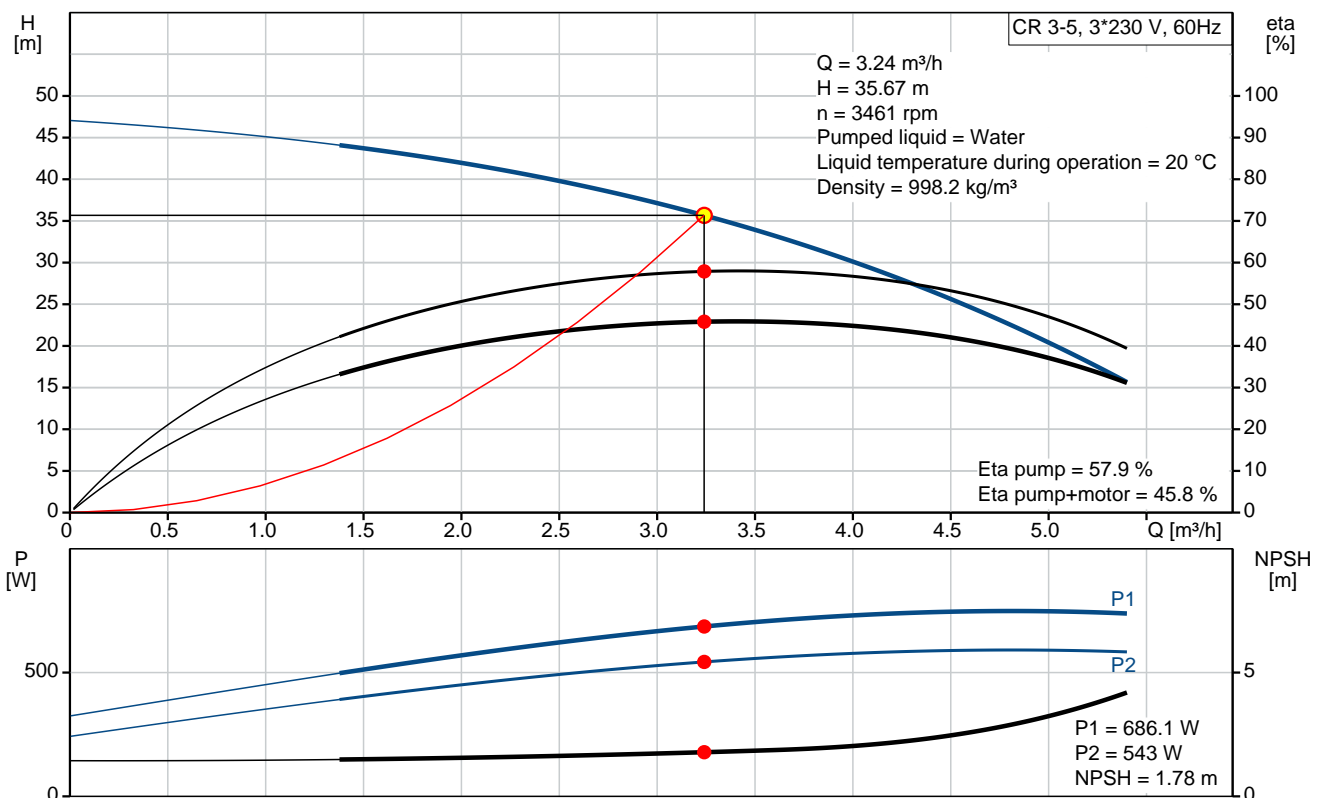


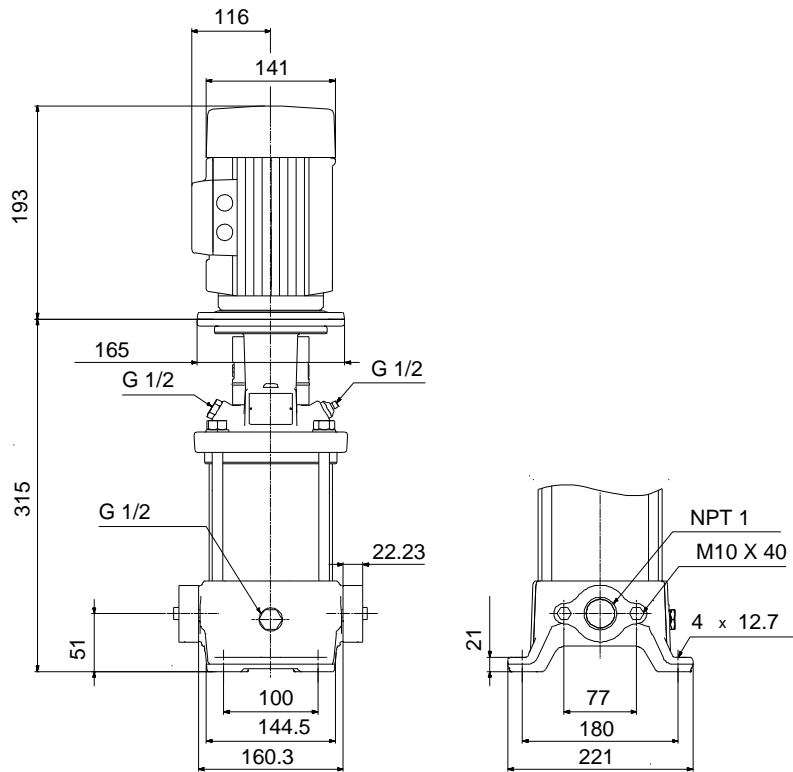
CR 3-5

Vertical, multistage centrifugal pump with suction and discharge ports on the same level. The pump head and base are in cast iron. All other wetted parts are in stainless steel (EN 1.4301)

Note! Product picture may differ from actual product

Conditions of Service	Pump Data	Motor Data
Flow: 3.24 m ³ /h	Max pressure at stated temp: 16 bar / 90 °C	Rated power - P2: 0.55 kW
Head: 35.67 m	Maximum ambient temperature: 40 °C	Rated voltage: 208-230YY/460Y V
Efficiency: 45.8 %	Approvals: CURUS	Mains frequency: 60 Hz
Liquid: Water	Shaft seal: HQQV	Enclosure class: 55 Dust/Jetting
Temperature: 20 °C	Product number: 96083132	Insulation class: F
NPSH required: 1.78 m		Motor protection: NONE
Viscosity: _____		Motor type: 71BA
Specific Gravity: 1.000		Motor_efficiency: 79.0-80.0 %





Materials:

Base:	Cast iron EN 1561 EN-GJL-200 ASTM A48-25B
Impeller:	Stainless steel AISI 304 EN 1.4301
Material code:	A
Code for rubber:	V

Tender Text

Product No.: [96083132](#)**CR 3-5 A-B-A-V-HQQV**

Vertical, non-self-priming, multistage, in-line, centrifugal pump for installation in pipe systems and mounting on a foundation.

The pump has the following characteristics:

- Impellers and intermediate chambers are made of
- The shaft seal has assembly length

according to EN 12756.

- Power transmission is via cast iron split coupling.

The motor is a 3-phase AC motor.

Controls:

Frequency converter: NONE

Liquid:

Pumped liquid: Water

Liquid temperature during operation: 20 °C

Density: 998.2 kg/m³

Technical:

Speed for pump data: 3439 rpm

Actual calculated flow: 3.24 m³/h

Resulting head of the pump: 35.67 m

Pump orientation: Vertical

Shaft seal arrangement: Single

Code for shaft seal: HQQV

Approvals on nameplate: CURUS

Curve tolerance: ISO9906:2012 3B

Materials:

Base: Cast iron
EN 1561 EN-GJL-200
ASTM A48-25B

Impeller: Stainless steel
EN 1.4301

Bearing material: AISI 304
SIC

Installation:

Maximum ambient temperature: 40 °C

Max pressure at stated temp: 16 bar / 90 °C
16 bar / -20 °C

Type of connection: Oval / NPT(F)

Size of inlet connection: 1 inch


Size of outlet connection: 1 inch
Pressure rating: PN 16
Flange size for motor: 56C

Electrical data:

Motor standard: NEMA
Motor type: 71BA
IE Efficiency class: NA
Rated power - P2: 0.55 kW
Power (P2) required by pump: 0.55 kW
Mains frequency: 60 Hz
Rated voltage: 3 x 208-230YY/460Y V
Service factor: 1,25
Rated current: 2,40-2,30/1,20 A
Starting current: 590-650 %
Cos phi - power factor: 0,84-0,78
Rated speed: 3430-3460 rpm
Motor efficiency at full load: 79.0-80.0 %
Number of poles: 2
Enclosure class (IEC 34-5): 55 Dust/Jetting
Insulation class (IEC 85): F

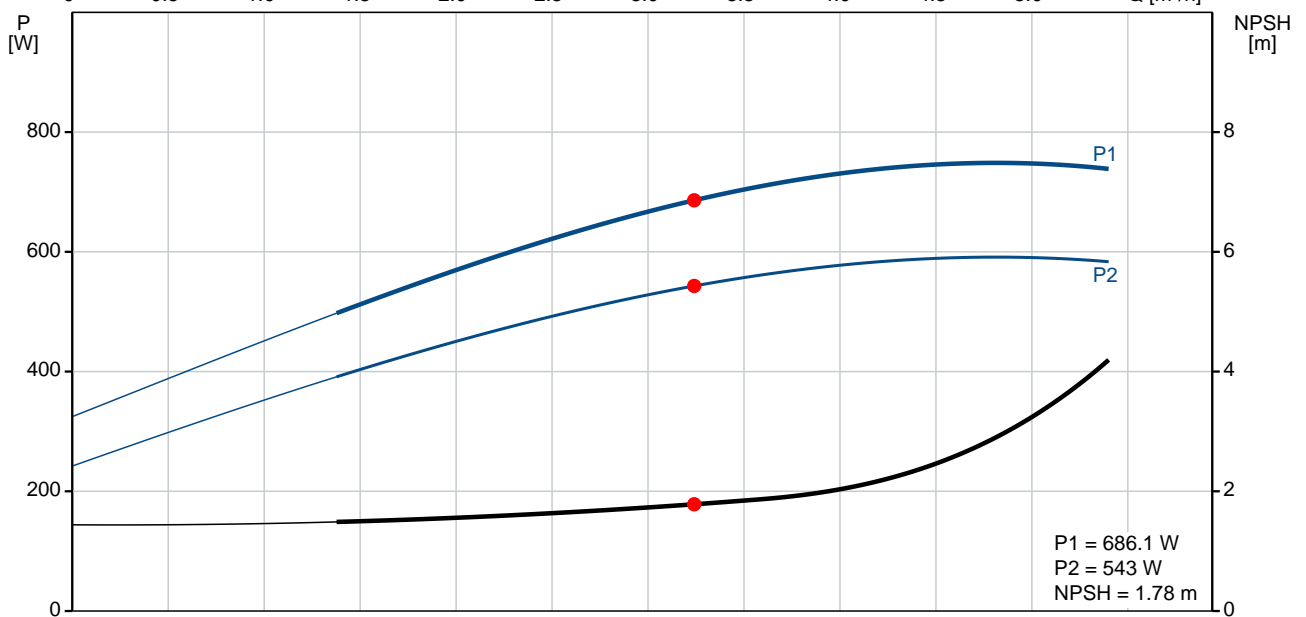
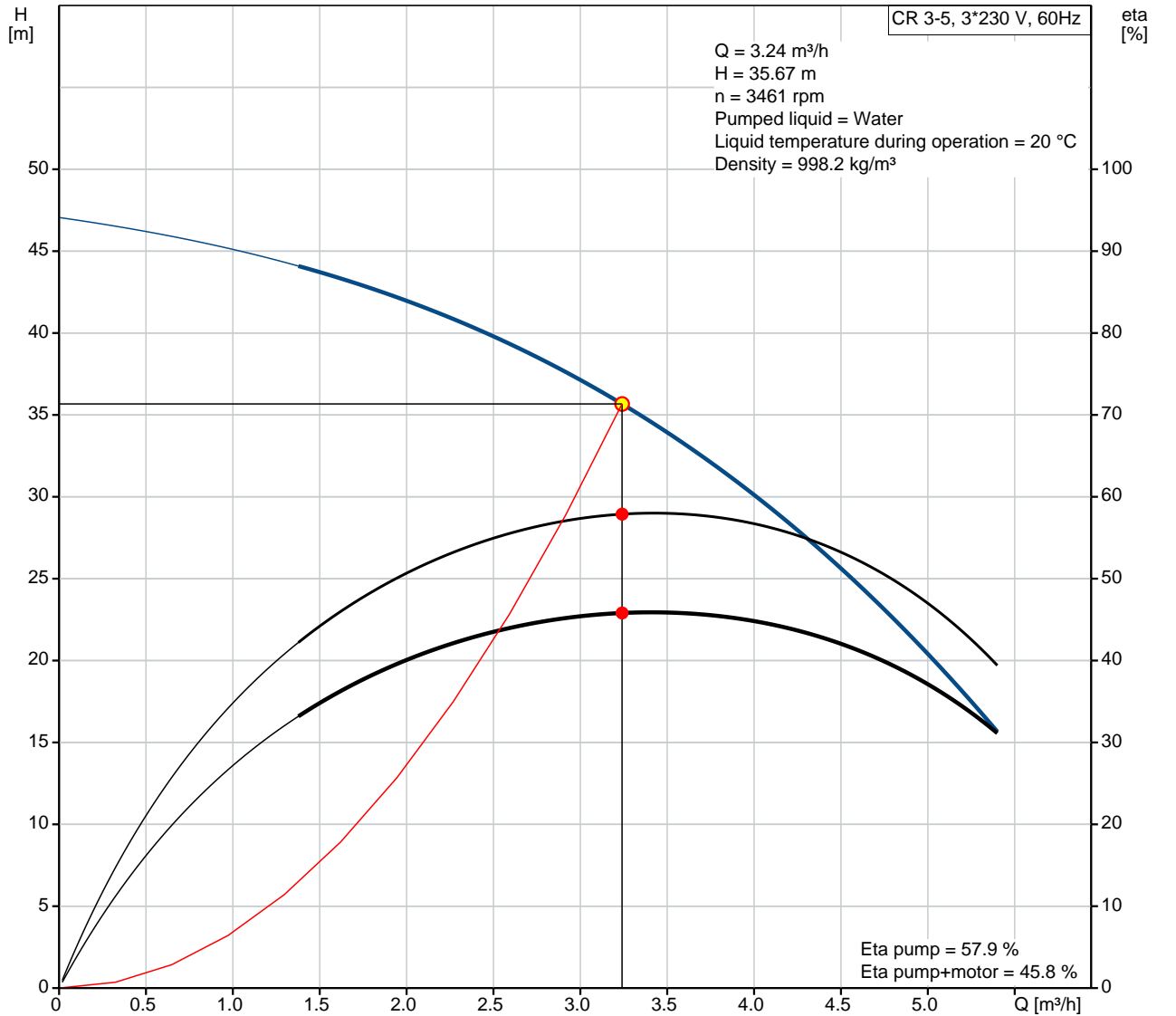
Others:

Net weight: 22.1 kg
Gross weight: 27.1 kg
Shipping volume: 0.14 m³

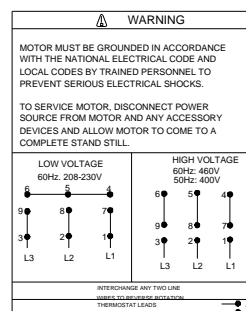
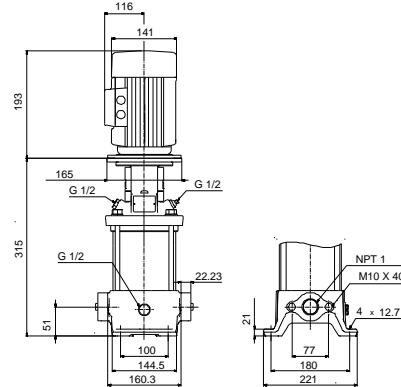
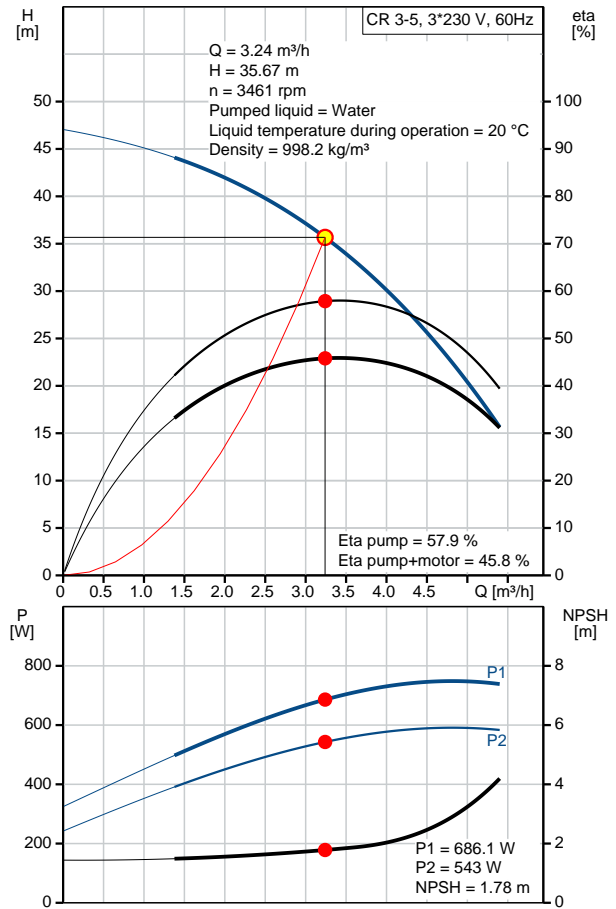
Position	Qty.	Description
	1	<p>CR 3-5 A-B-A-V-HQQV</p>  <p>Product No.: 96083132 Vertical, non-self-priming, multistage, in-line, centrifugal pump for installation in pipe systems and mounting on a foundation.</p> <p>The pump has the following characteristics:</p> <ul style="list-style-type: none"> - Impellers and intermediate chambers are made of - The shaft seal has assembly length according to EN 12756. - Power transmission is via cast iron split coupling. <p>The motor is a 3-phase AC motor.</p> <p>Controls: Frequency converter: NONE</p> <p>Liquid: Pumped liquid: Water Liquid temperature during operation: 20 °C Density: 998.2 kg/m³</p> <p>Technical: Speed for pump data: 3439 rpm Actual calculated flow: 3.24 m³/h Resulting head of the pump: 35.67 m Pump orientation: Vertical Shaft seal arrangement: Single Code for shaft seal: HQQV Approvals on nameplate: CURUS Curve tolerance: ISO9906:2012 3B</p> <p>Materials: Base: Cast iron EN 1561 EN-GJL-200 ASTM A48-25B Impeller: Stainless steel EN 1.4301 AISI 304 Bearing material: SIC</p> <p>Installation: Maximum ambient temperature: 40 °C Max pressure at stated temp: 16 bar / 90 °C 16 bar / -20 °C Type of connection: Oval / NPT(F) Size of inlet connection: 1 inch Size of outlet connection: 1 inch</p>

Position	Qty.	Description
		Pressure rating: PN 16 Flange size for motor: 56C Electrical data: Motor standard: NEMA Motor type: 71BA IE Efficiency class: NA Rated power - P2: 0.55 kW Power (P2) required by pump: 0.55 kW Mains frequency: 60 Hz Rated voltage: 3 x 208-230YY/460Y V Service factor: 1,25 Rated current: 2,40-2,30/1,20 A Starting current: 590-650 % Cos phi - power factor: 0,84-0,78 Rated speed: 3430-3460 rpm Motor efficiency at full load: 79.0-80.0 % Number of poles: 2 Enclosure class (IEC 34-5): 55 Dust/Jetting Insulation class (IEC 85): F Others: Net weight: 22.1 kg Gross weight: 27.1 kg Shipping volume: 0.14 m ³

96083132 CR 3-5 60 Hz



Description	Value
General information:	
Product name:	CR 3-5 A-B-A-V-HQQV
Product No:	96083132
EAN number:	5700395183009
Technical:	
Speed for pump data:	3439 rpm
Actual calculated flow:	3.24 m ³ /h
Resulting head of the pump:	35.67 m
Stages:	5
Impellers:	5
Low NPSH:	N
Pump orientation:	Vertical
Shaft seal arrangement:	Single
Code for shaft seal:	HQQV
Approvals on nameplate:	CURUS
Curve tolerance:	ISO9906:2012 3B
Pump version:	A
Model:	A
Cooling:	TEFC
Materials:	
Base:	Cast iron
	EN 1561 EN-GJL-200
	ASTM A48-25B
Impeller:	Stainless steel
	EN 1.4301
	AISI 304
Material code:	A
Code for rubber:	V
Bearing material:	SIC
Installation:	
Maximum ambient temperature:	40 °C
Max pressure at stated temp:	16 bar / 90 °C
	16 bar / -20 °C
Type of connection:	Oval / NPT(F)
Connect code:	B
Size of inlet connection:	1 inch
Size of outlet connection:	1 inch
Pressure rating:	PN 16
Flange size for motor:	56C
Liquid:	
Pumped liquid:	Water
Liquid temperature during operation:	20 °C
Density:	998.2 kg/m ³
Electrical data:	
Motor standard:	NEMA
Motor type:	71BA
IE Efficiency class:	NA
Rated power - P2:	0.55 kW
Power (P2) required by pump:	0.55 kW
Mains frequency:	60 Hz
Rated voltage:	3 x 208-230YY/460Y V
Service factor:	1,25
Rated current:	2,40-2,30/1,20 A
Starting current:	590-650 %





Company name:

Created by:

Phone:

Date:

21/02/2018

Description	Value
Load current:	2,9-2,75/1,4 A
Cos phi - power factor:	0,84-0,78
Rated speed:	3430-3460 rpm
Motor efficiency at full load:	79.0-80.0 %
Number of poles:	2
Enclosure class (IEC 34-5):	55 Dust/Jetting
Insulation class (IEC 85):	F
Motor protec:	NONE
Motor No:	85900702

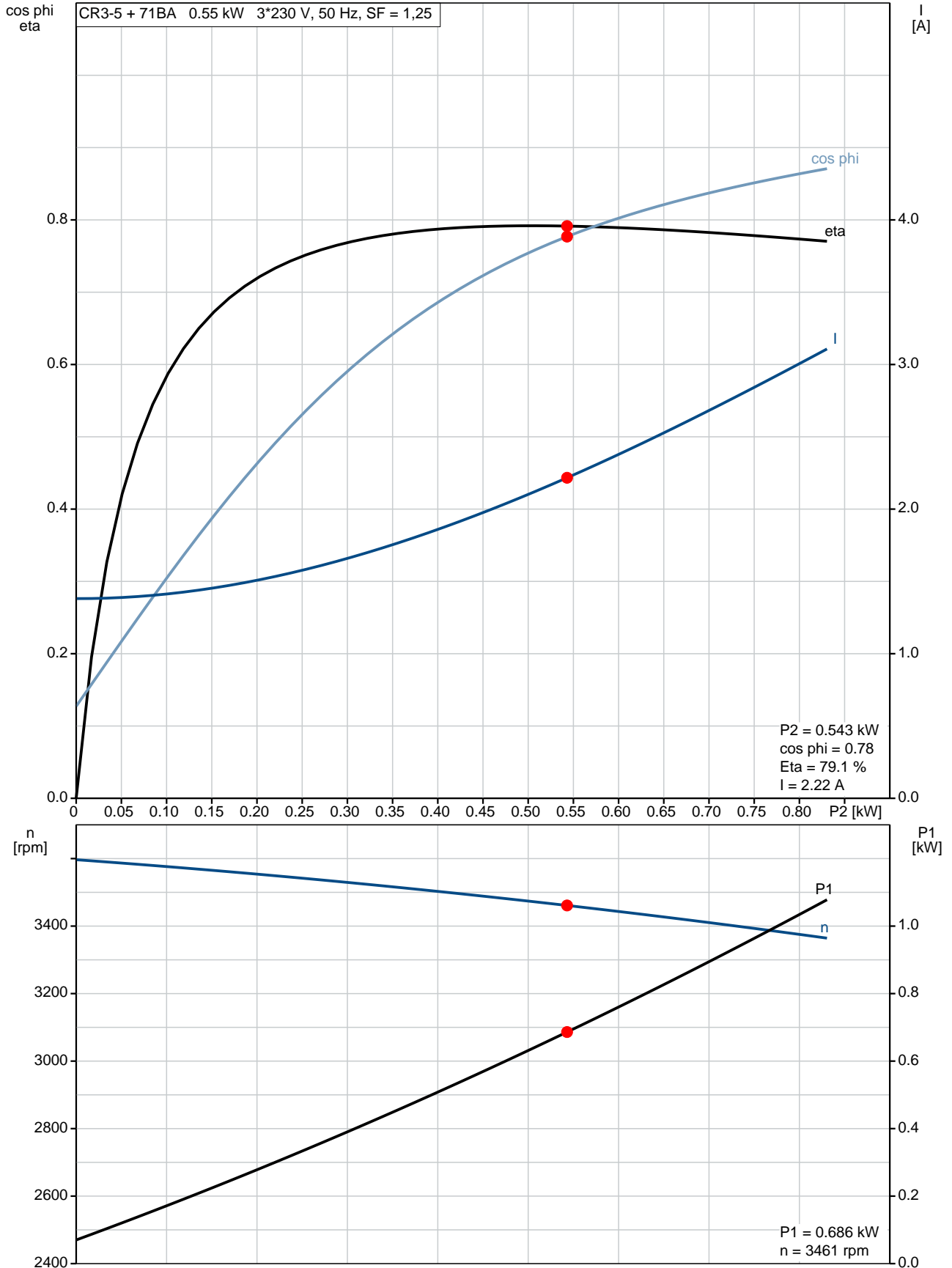
Controls:

Frequency converter:	NONE
----------------------	------

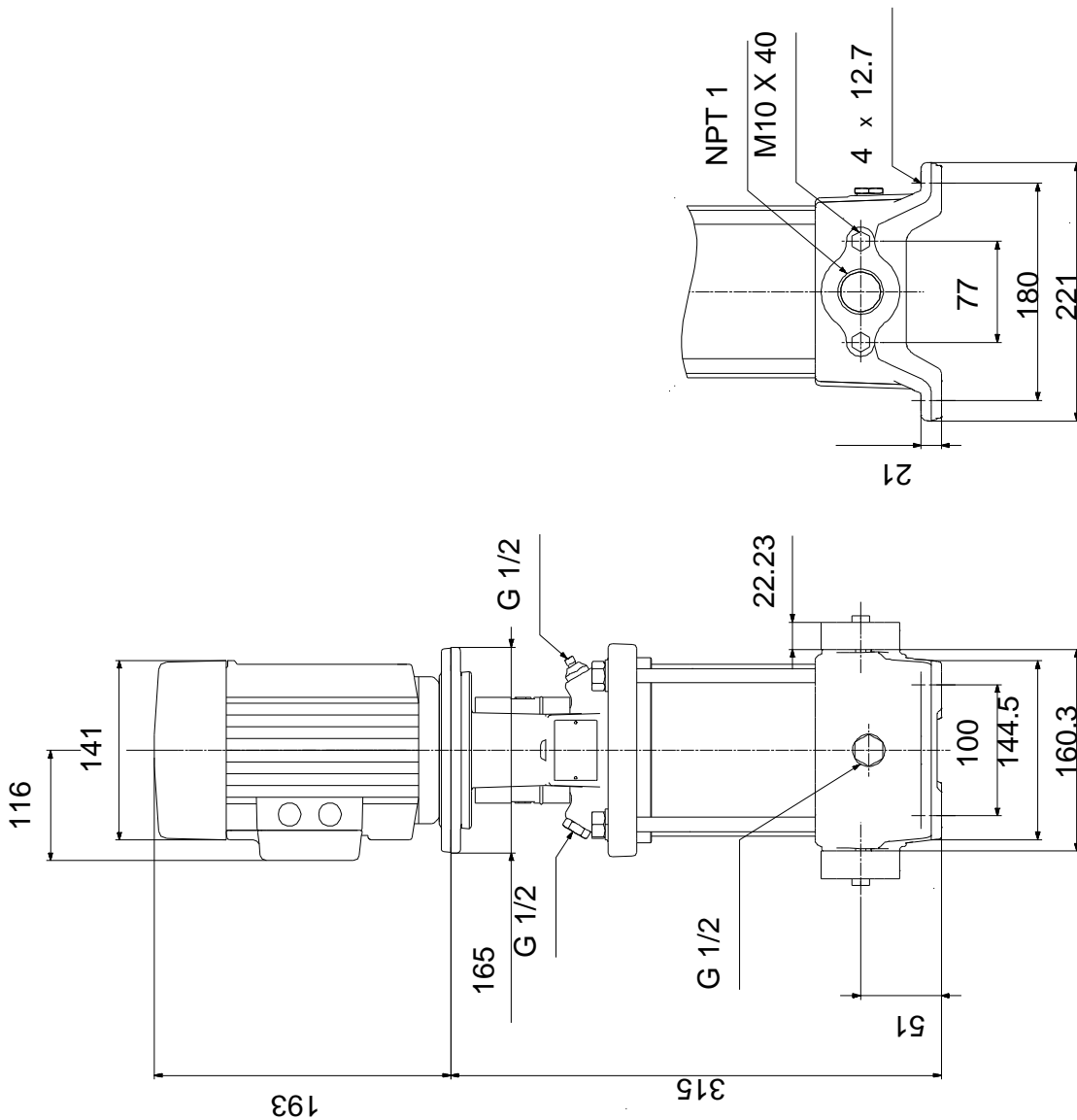
Others:

Net weight:	22.1 kg
Gross weight:	27.1 kg
Shipping volume:	0.14 m ³

96083132 CR 3-5 60 Hz



96083132 CR 3-5 60 Hz



Note! All units are in [mm] unless others are stated.
Disclaimer: This simplified dimensional drawing does not show all details.

96083132 CR 3-5 60 Hz



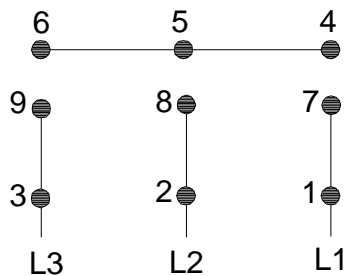
WARNING

MOTOR MUST BE GROUNDED IN ACCORDANCE WITH THE NATIONAL ELECTRICAL CODE AND LOCAL CODES BY TRAINED PERSONNEL TO PREVENT SERIOUS ELECTRICAL SHOCKS.

TO SERVICE MOTOR, DISCONNECT POWER SOURCE FROM MOTOR AND ANY ACCESSORY DEVICES AND ALLOW MOTOR TO COME TO A COMPLETE STAND STILL.

LOW VOLTAGE

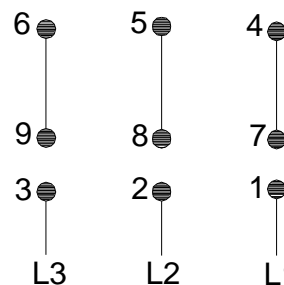
60Hz. 208-230V



HIGH VOLTAGE

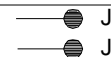
60Hz: 460V

50Hz: 400V



96553852

INTERCHANGE ANY TWO LINE WIRES TO REVERSE ROTATION
THERMOSTAT LEADS
(WHEN PROVIDED)





Company name:

Created by:

Phone:

Date: 21/02/2018

Order Data:

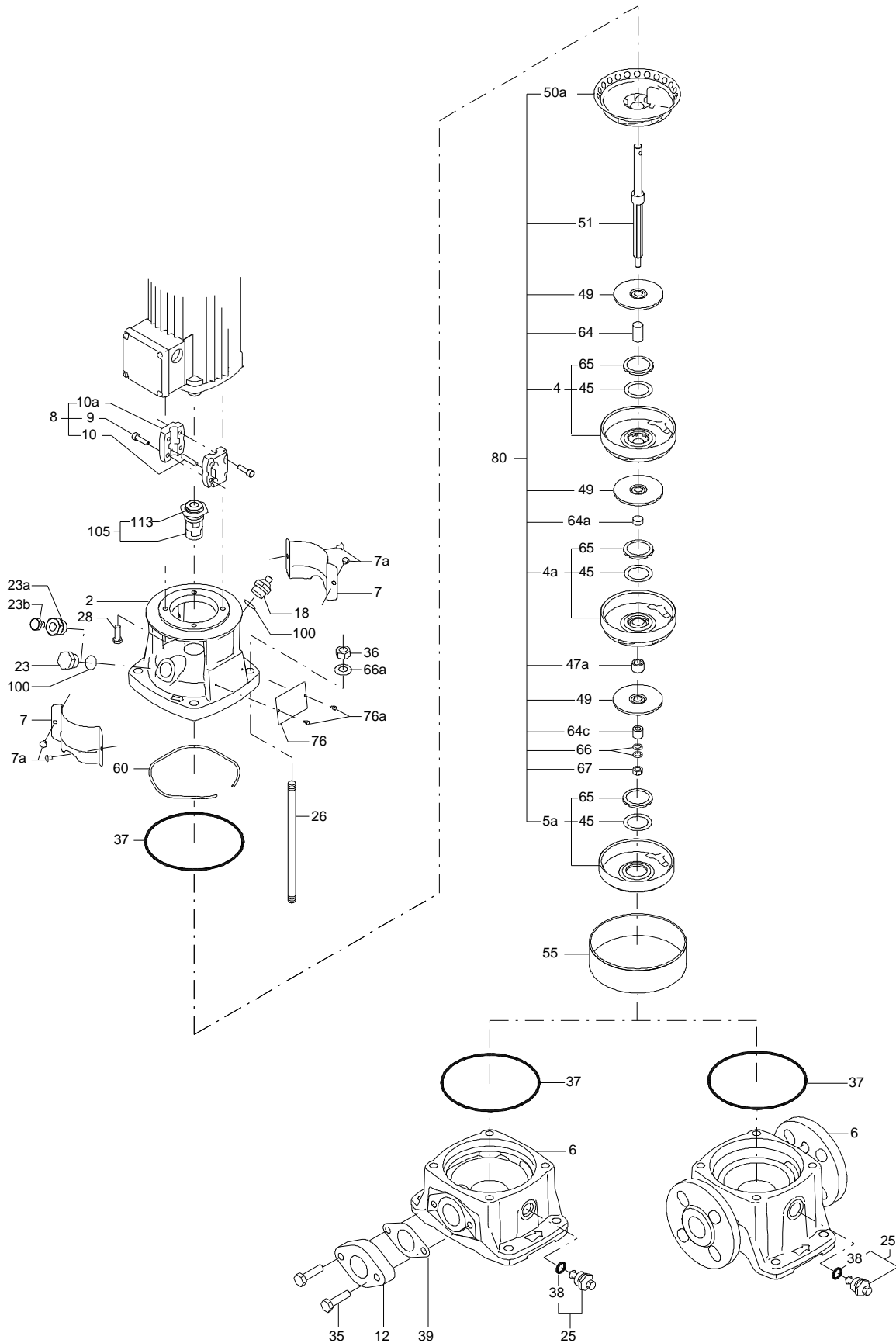
Product name: CR 3-5 A-B-A-V-HQQV

Amount: 1

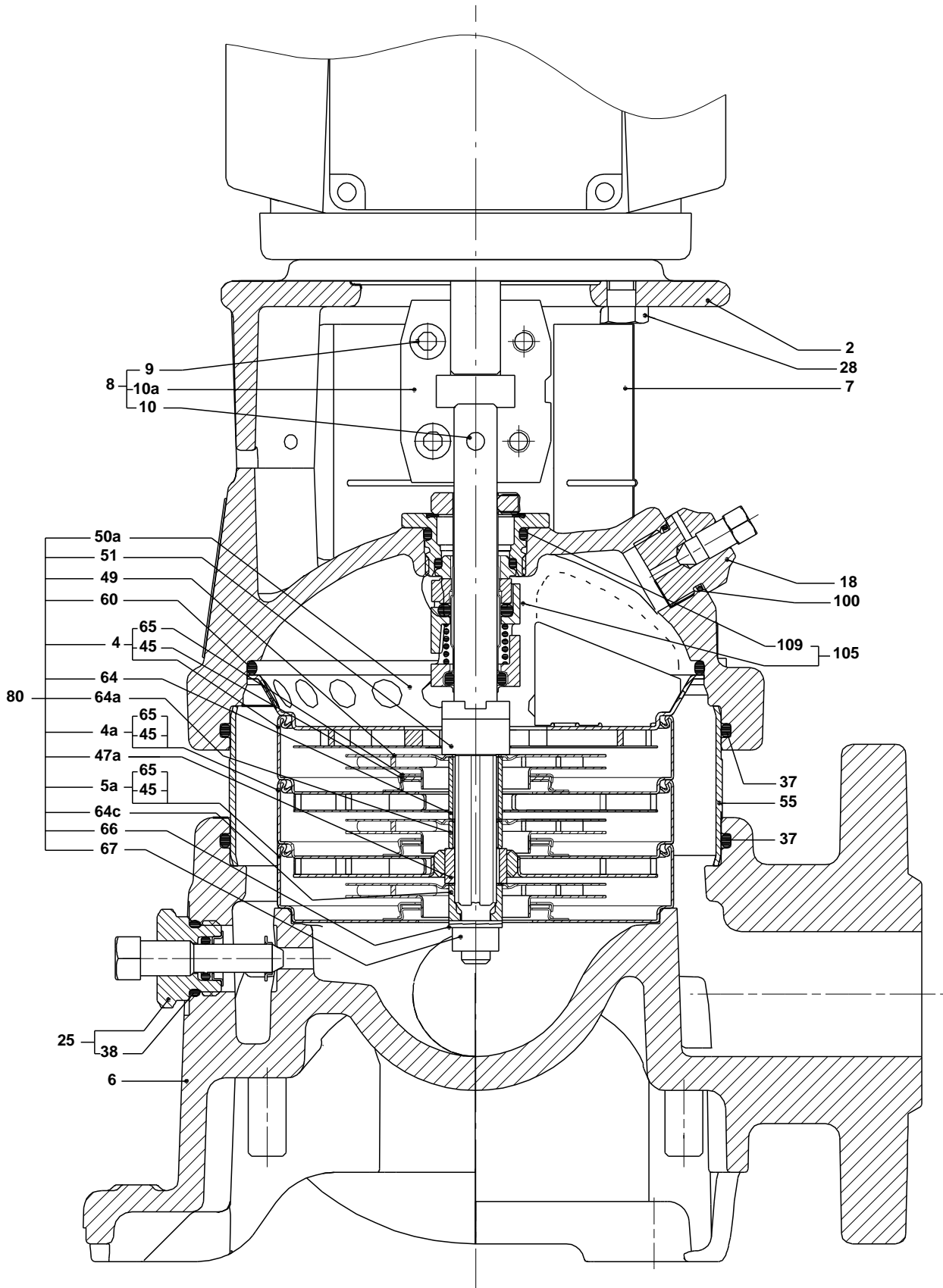
Product No: 96083132

Total: Price on request

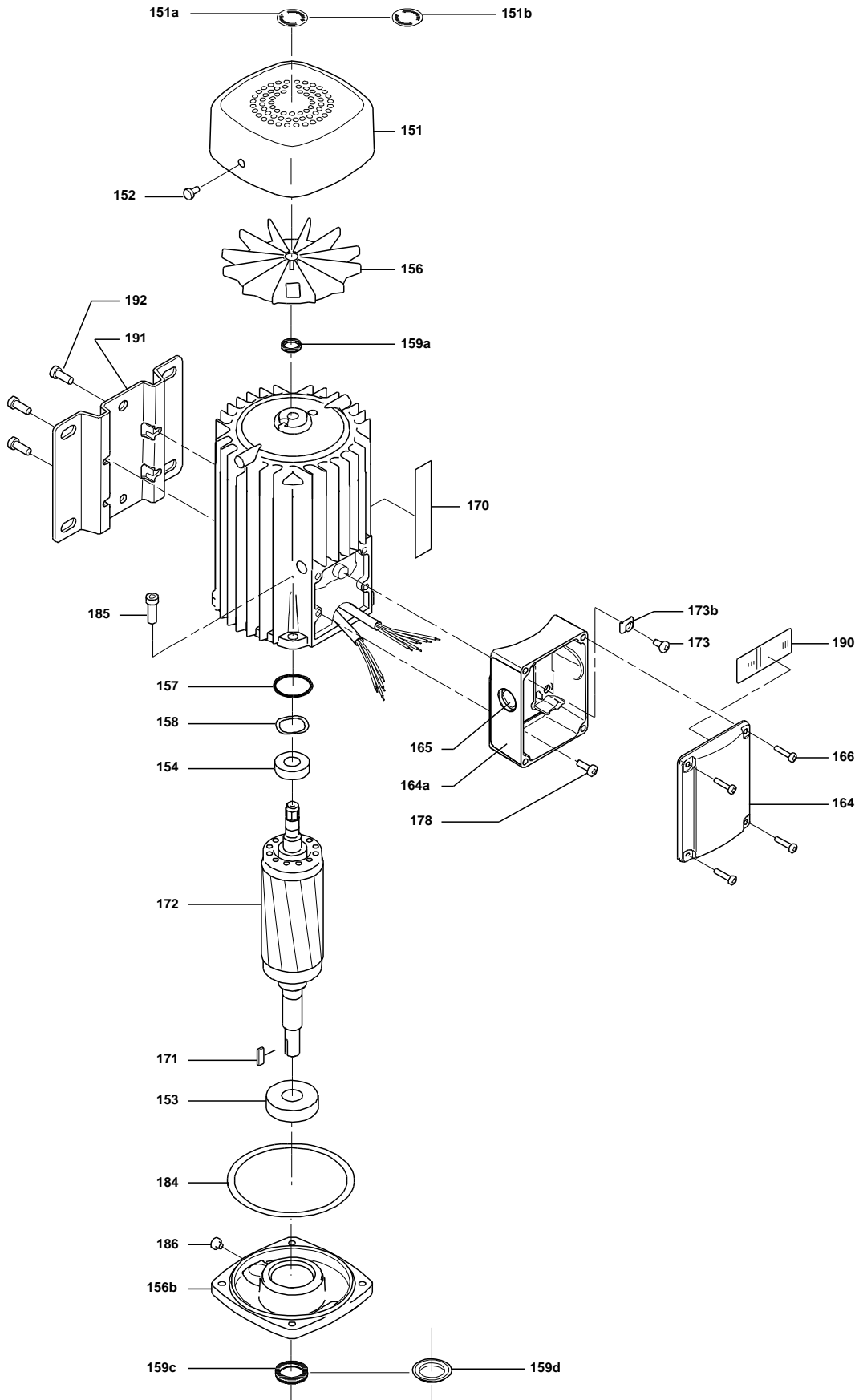
Exploded view (tm020210 4100)



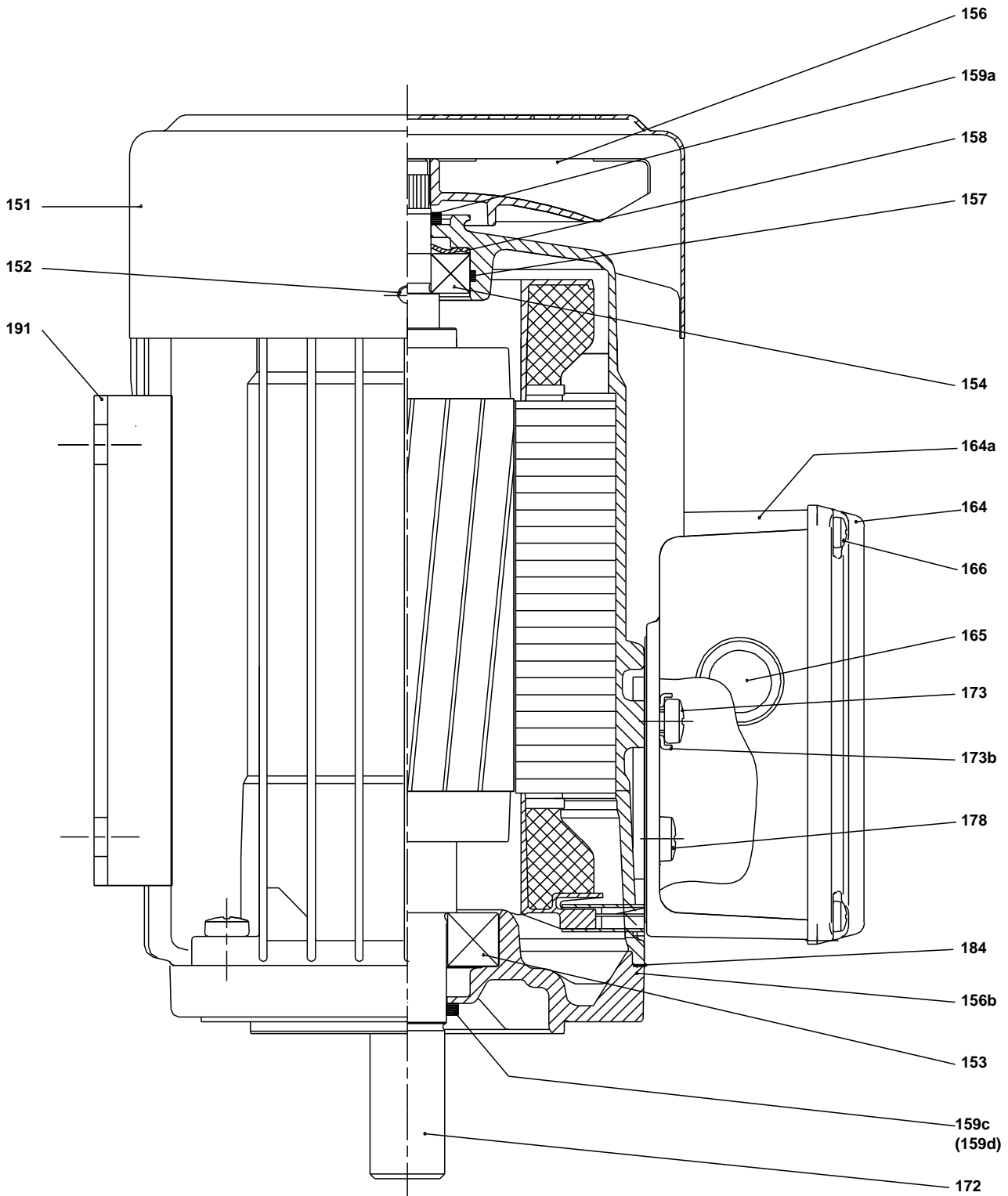
Sectional drawing (tm020211 4100)



Exploded view (tm030552)



Sectional drawing (TM031466)



Parts list CR 3-5, Product No. 96083132

Valid from 10.1.2005 (0502)

Pos	Description	Annotation	Classification Data	Part no.	Qty.	Unit
	Motor				1	pcs
+	Motor				1	pcs
-	Base cpl.				1	pcs
6	Base				1	
12	Flange				2	
35	Hex head screw		Length (mm): 40 Thread: M10		4	
37	Gasket				2	
-	Sealing parts				1	pcs
- 25	Drain plug w/bypass valve				1	
38	O-ring		Diameter: 16,3 Material type: FKM Thickness: 2,4			
37	O-ring		Diameter: 137,5 Material type: FKM Thickness: 3,3		2	
100	O-ring		Diameter: 16,3 Material type: FKM Thickness: 2,4		2	
- 2	Pump head cpl.				1	pcs
2	Pump head				1	
7	Coupling guard				2	
7a	Thread cutting screw				4	
- 18	Air vent screw				1	
	Plug					
	Spindle					
- 25	Drain plug				1	
23	Pipe plug					
25	Drain plug					
28	Hex head cap screw		Length (mm): 25 Thread: UNC 3/8"		4	
60	Formed wire spring				1	
+	8 Coupling cpl.				1	pcs
26	Staybolt		Length (mm): 115 Thread: M12		4	pcs
36a	Washer		Designation: DIN 125 A Internal diameter: 13 Outer diameter: 24 Thickness: 2,5		4	pcs
55	Outer sleeve				1	pcs
66a	Nut		Thread: M12		4	pcs
- 80	Chamber stack				1	pcs
-	Guide vane cpl.				1	
	Guide vane					
	Plate					
50b	Top plate					
- 4	Chamber cpl.				3	
	Guide vane					
	Plate					
	Retainer					
	Intermediate chamber					
	Vane					
45	Neck ring					

Pos	Description	Annotation	Classification Data	Part no.	Qty.	Unit
65	Retainer					
- 4a	Chamber w. bearing cpl.				1	
	Guide vane					
	Retainer for bearing					
	Bearing bush					
	Retainer					
	Intermediate chamber					
	Vane					
45	Neck ring					
65	Retainer					
- 5a	Chamber cpl.				1	
	Retainer					
	Intermediate chamber					
	Vane					
45	Neck ring					
65	Retainer					
36	Lock nut		Thread: M8		1	
47a	Bearing ring, rotating				1	
49	Impeller cpl.				5	
51	Shaft, spline, cpl.				1	
64a	Spacing pipe				3	
64a	Spacing pipe		Internal diameter: 12,85		1	
			Outer diameter: 15,85			
			Length (mm): 4,50			
64c	Clamp, splined		Internal diameter: 8,5		1	
			Outer diameter: 15			
66	Wedge lock washer				1	
- 105	Shaft seal		Material type: HQQV		1	pcs
	O-ring				1	
	O-ring				1	
	O-ring				1	
	Seal driver, upper				1	
	Seal driver, lower				1	
	Spacer ring				1	
	Pipe				1	
	Plug				1	
	Plug				1	
	Compression spring				1	
	Socket set screw				3	
103	Seal ring, stationary				1	
105	Seal ring, rotating				1	
109	O-ring				1	
113	Driver				1	