

| | | | | | |
|-----------------|-------|------------------|-------|-----------|-------|
| PROJECT: | _____ | UNIT TAG: | _____ | QUANTITY: | _____ |
| REPRESENTATIVE: | _____ | TYPE OF SERVICE: | _____ | DATE: | _____ |
| ENGINEER: | _____ | SUBMITTED BY: | _____ | DATE: | _____ |
| CONTRACTOR: | _____ | APPROVED BY: | _____ | DATE: | _____ |
| | _____ | ORDER NO.: | _____ | DATE: | _____ |

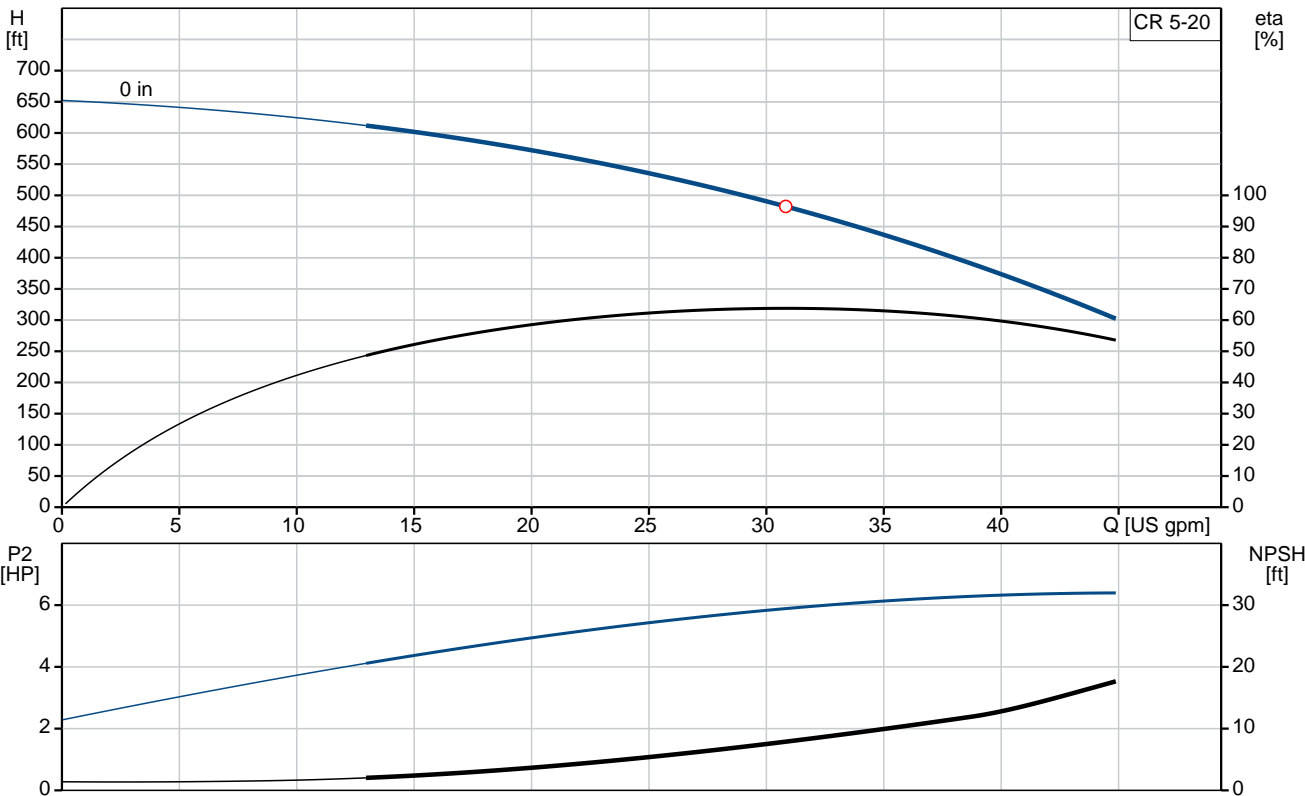


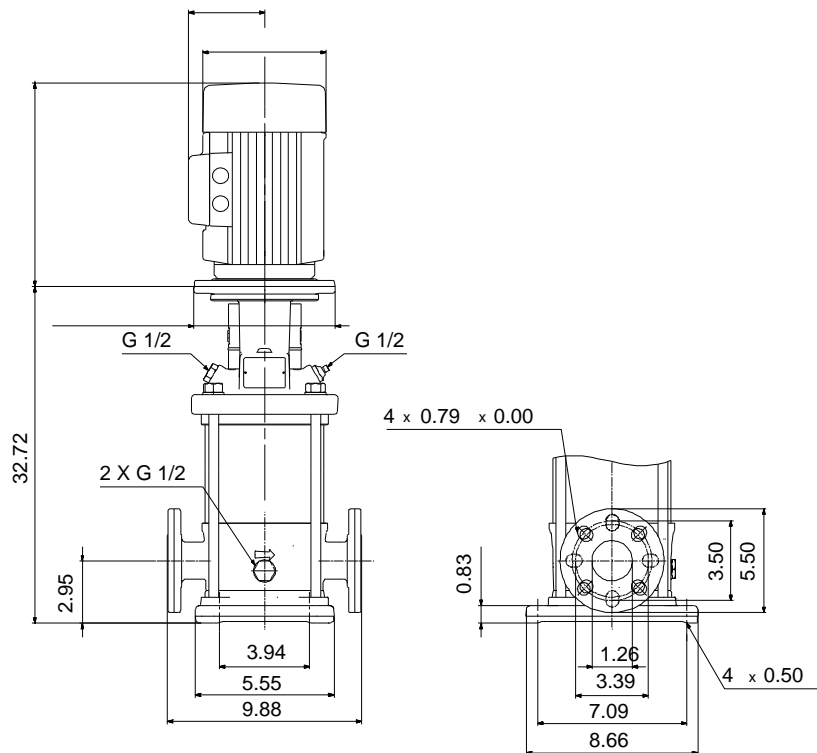
CR 5-20

Vertical, multistage centrifugal pump with suction and discharge ports on the same level. The pump head and base are in cast iron. All other wetted parts are in stainless steel (EN 1.4301)(AISI 304)

Product photo could vary from the actual product

| Conditions of Service | Pump Data | Motor Data |
|-------------------------|--|-----------------------|
| Flow: _____ | Max pressure at stated temperature: 363 psi / 194 °F | Main frequency: 60 Hz |
| Head: _____ | Shaft seal: HQQV | |
| Efficiency: _____ | Product number: 96084342 | |
| Liquid: Water | | |
| Temperature: 68 °F | | |
| NPSH required: ft | | |
| Viscosity: _____ | | |
| Specific Gravity: 1.000 | | |





Materials:

| | |
|------------------|---|
| Base: | Cast iron EN 1561 EN-GJL-200 ASTM A48-25B |
| Impeller: | Stainless steel AISI 304 EN 1.4301 |
| Material code: | A |
| Code for rubber: | V |

Tender Text



Product photo could vary from the actual product

Product No.: [96084342](#)

CR 5-20 A-FGJ-A-V-HQQV

Vertical, non-self-priming, multistage, in-line, centrifugal pump for installation in pipe systems and mounting on a foundation.

The pump has the following characteristics:

- Impellers and intermediate chambers are made of
- The shaft seal has assembly length according to EN 12756.
- Power transmission is via cast iron split coupling.

Controls:

Frequency converter: NONE

Liquid:

Pumped liquid: Water

Liquid temperature during operation: 68 °F

Density: 62.29 lb/ft³

Technical:

Speed for pump data: 3467 rpm

Pump orientation: Vertical

Shaft seal arrangement: Single

Code for shaft seal: HQQV

Curve tolerance: ISO9906:2012 3B

Materials:

Base: Cast iron
EN 1561 EN-GJL-200
ASTM A48-25B

Impeller: Stainless steel
EN 1.4301
AISI 304

Bearing material: SIC

Installation:

Max pressure at stated temperature: 363 psi / 194 °F
363 psi / -4 °F

Type of connection: DIN / ANSI / JIS

Size of inlet connection: DN 25/32



Company name:

Created by:

Phone:

Date:

2/20/2018

Size of suction port: 1 1/4 inch
Size of outlet connection: DN 25/32
Size of outlet port: 1 1/4 inch
Pressure rating: PN 25
Flange size for motor: 213TC
Flange rating inlet: 250 lb

Electrical data:

Motor standard: NEMA
Power (P2) required by pump: 7.5 HP

Others:

Net weight: 73.3 lb
Gross weight: 91.2 lb
Shipping volume: 8.26 ft³

| Position | Count | Description |
|----------|-------|--|
| | 1 | <p>CR 5-20 A-FGJ-A-V-HQQV</p>  <p>Product photo could vary from the actual product</p> <p>Product No.: 96084342</p> <p>Vertical, non-self-priming, multistage, in-line, centrifugal pump for installation in pipe systems and mounting on a foundation.</p> <p>The pump has the following characteristics:</p> <ul style="list-style-type: none"> - Impellers and intermediate chambers are made of - The shaft seal has assembly length according to EN 12756. - Power transmission is via cast iron split coupling. <p>Controls:</p> <p>Frequency converter: NONE</p> <p>Liquid:</p> <p>Pumped liquid: Water</p> <p>Liquid temperature during operation: 68 °F</p> <p>Density: 62.29 lb/ft³</p> <p>Technical:</p> <p>Speed for pump data: 3467 rpm</p> <p>Pump orientation: Vertical</p> <p>Shaft seal arrangement: Single</p> <p>Code for shaft seal: HQQV</p> <p>Curve tolerance: ISO9906:2012 3B</p> <p>Materials:</p> <p>Base: Cast iron EN 1561 EN-GJL-200 ASTM A48-25B</p> <p>Impeller: Stainless steel EN 1.4301 AISI 304</p> <p>Bearing material: SIC</p> <p>Installation:</p> <p>Max pressure at stated temperature: 363 psi / 194 °F 363 psi / -4 °F</p> <p>Type of connection: DIN / ANSI / JIS</p> <p>Size of inlet connection: DN 25/32</p> <p>Size of suction port: 1 1/4 inch</p> <p>Size of outlet connection: DN 25/32</p> |



Company name:

Created by:

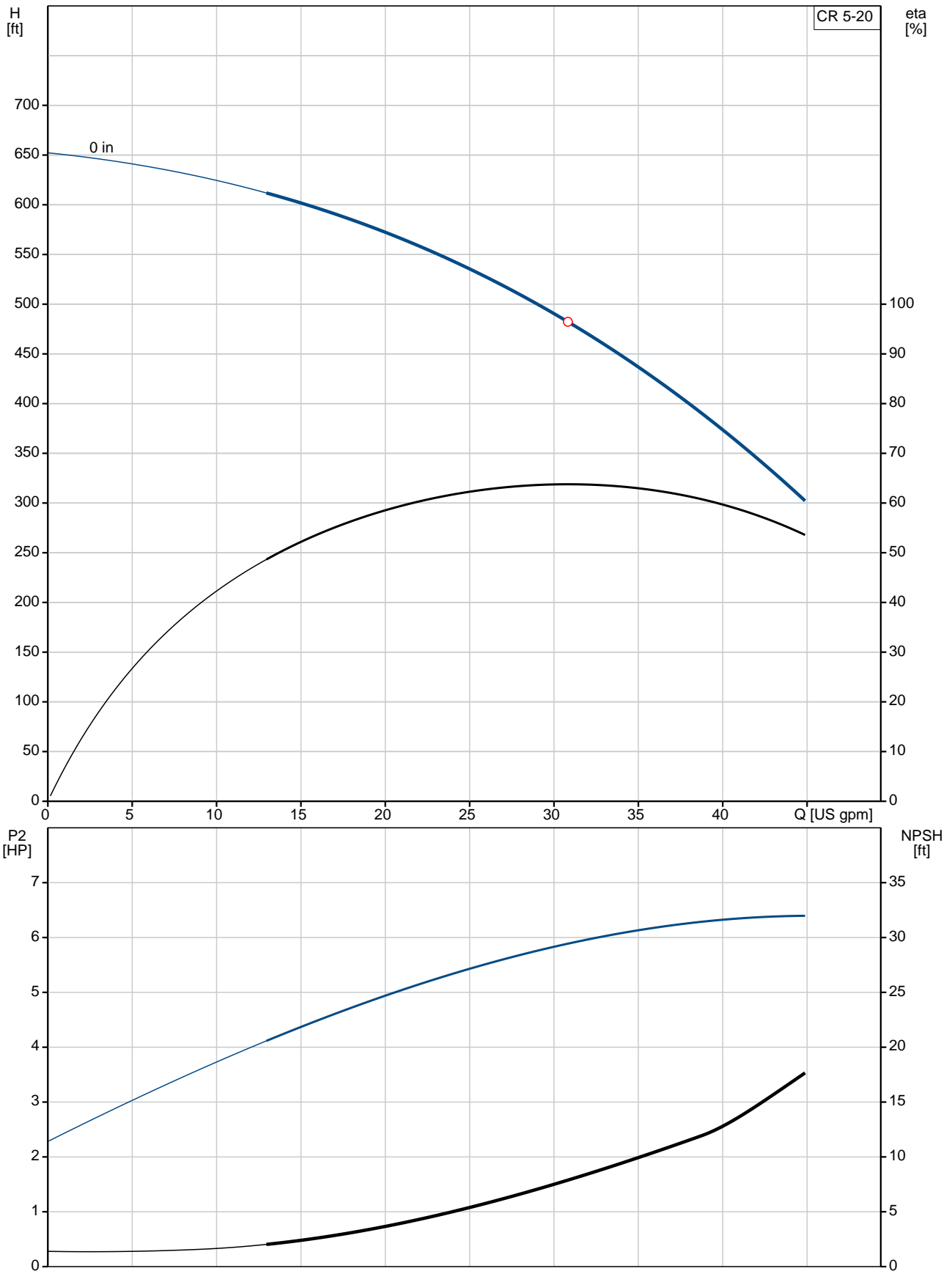
Phone:

Date:

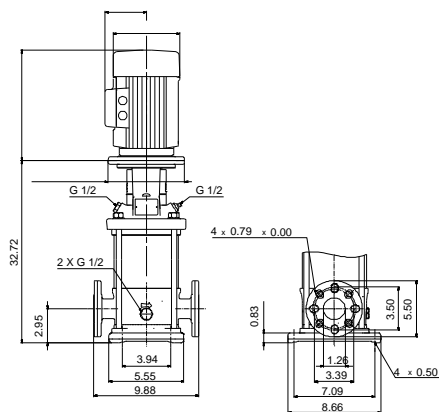
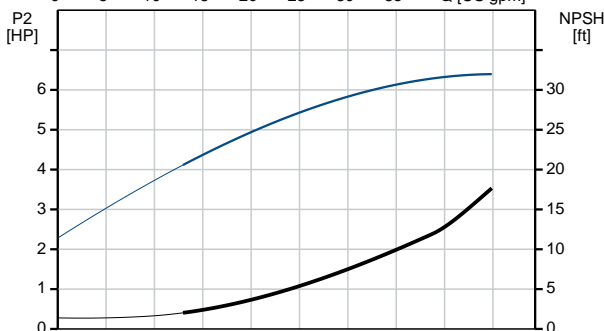
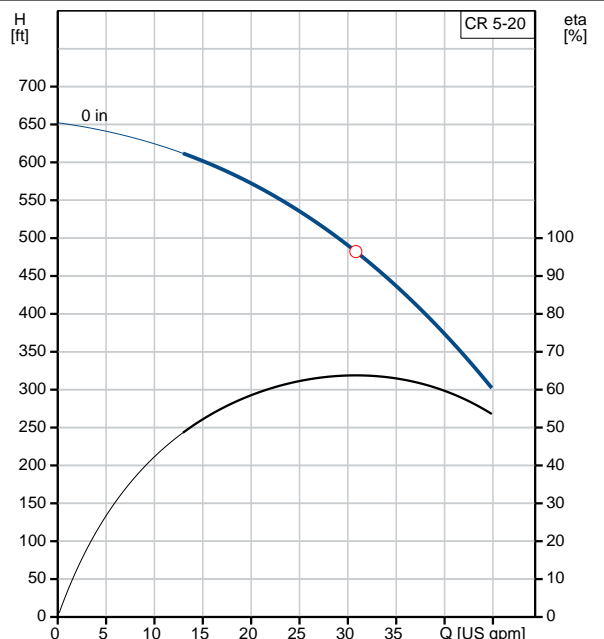
2/20/2018

| Position | Count | Description |
|----------|-------|---|
| | | Size of outlet port: 1 1/4 inch Pressure rating: PN 25 Flange size for motor: 213TC Flange rating inlet: 250 lb Electrical data: Motor standard: NEMA Power (P2) required by pump: 7.5 HP Others: Net weight: 73.3 lb Gross weight: 91.2 lb Shipping volume: 8.26 ft³ |

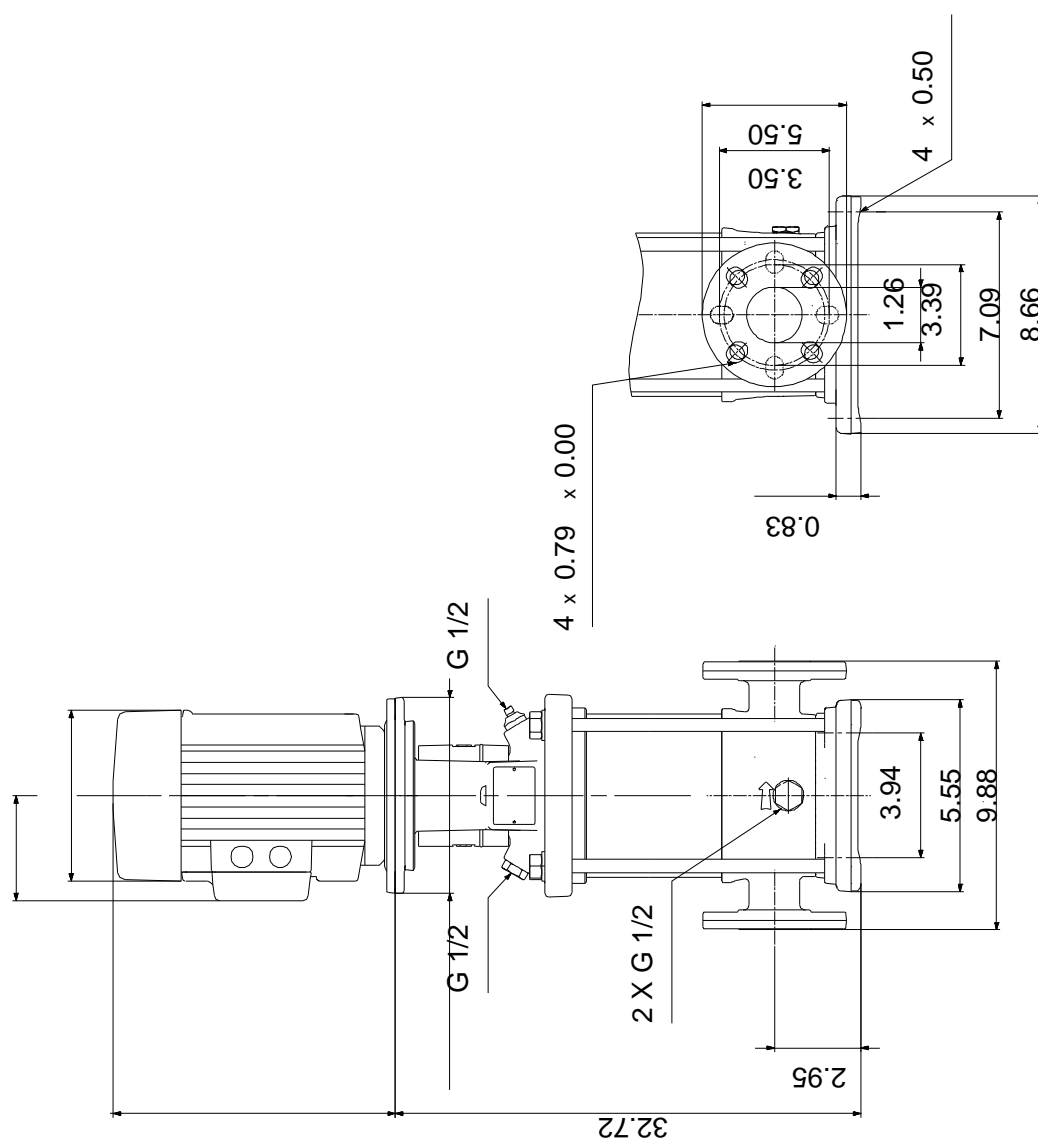
96084342 CR 5-20 60 Hz



| Description | Value |
|--------------------------------------|------------------------|
| General information: | |
| Product name: | CR 5-20 A-FGJ-A-V-HQQV |
| Product No.: | 96084342 |
| EAN: | 5700395191806 |
| Technical: | |
| Speed for pump data: | 3467 rpm |
| Stages: | 20 |
| Impellers: | 20 |
| Low NPSH: | N |
| Pump orientation: | Vertical |
| Shaft seal arrangement: | Single |
| Code for shaft seal: | HQQV |
| Curve tolerance: | ISO9906:2012 3B |
| Pump version: | A |
| Model: | A |
| Materials: | |
| Base: | Cast iron |
| | EN 1561 EN-GJL-200 |
| | ASTM A48-25B |
| Impeller: | Stainless steel |
| | EN 1.4301 |
| | AISI 304 |
| Material code: | A |
| Code for rubber: | V |
| Bearing material: | SIC |
| Installation: | |
| Max pressure at stated temperature: | 363 psi / 194 °F |
| | 363 psi / -4 °F |
| Type of connection: | DIN / ANSI / JIS |
| Connect code: | FGJ |
| Size of inlet connection: | DN 25/32 |
| Size of suction port: | 1 1/4 inch |
| Size of outlet connection: | DN 25/32 |
| Size of outlet port: | 1 1/4 inch |
| Pressure rating: | PN 25 |
| Flange size for motor: | 213TC |
| Flange rating inlet: | 250 lb |
| Liquid: | |
| Pumped liquid: | Water |
| Liquid temperature during operation: | 68 °F |
| Density: | 62.29 lb/ft³ |
| Electrical data: | |
| Motor standard: | NEMA |
| Power (P2) required by pump: | 7.5 HP |
| Controls: | |
| Frequency converter: | NONE |
| Others: | |
| Net weight: | 73.3 lb |
| Gross weight: | 91.2 lb |
| Shipping volume: | 8.26 ft³ |



96084342 CR 5-20 60 Hz



Note! All units are in [mm] unless otherwise stated.
Disclaimer: This simplified dimensional drawing does not show all details.



Company name:

Created by:

Phone:

Date:

2/20/2018

Order Data:

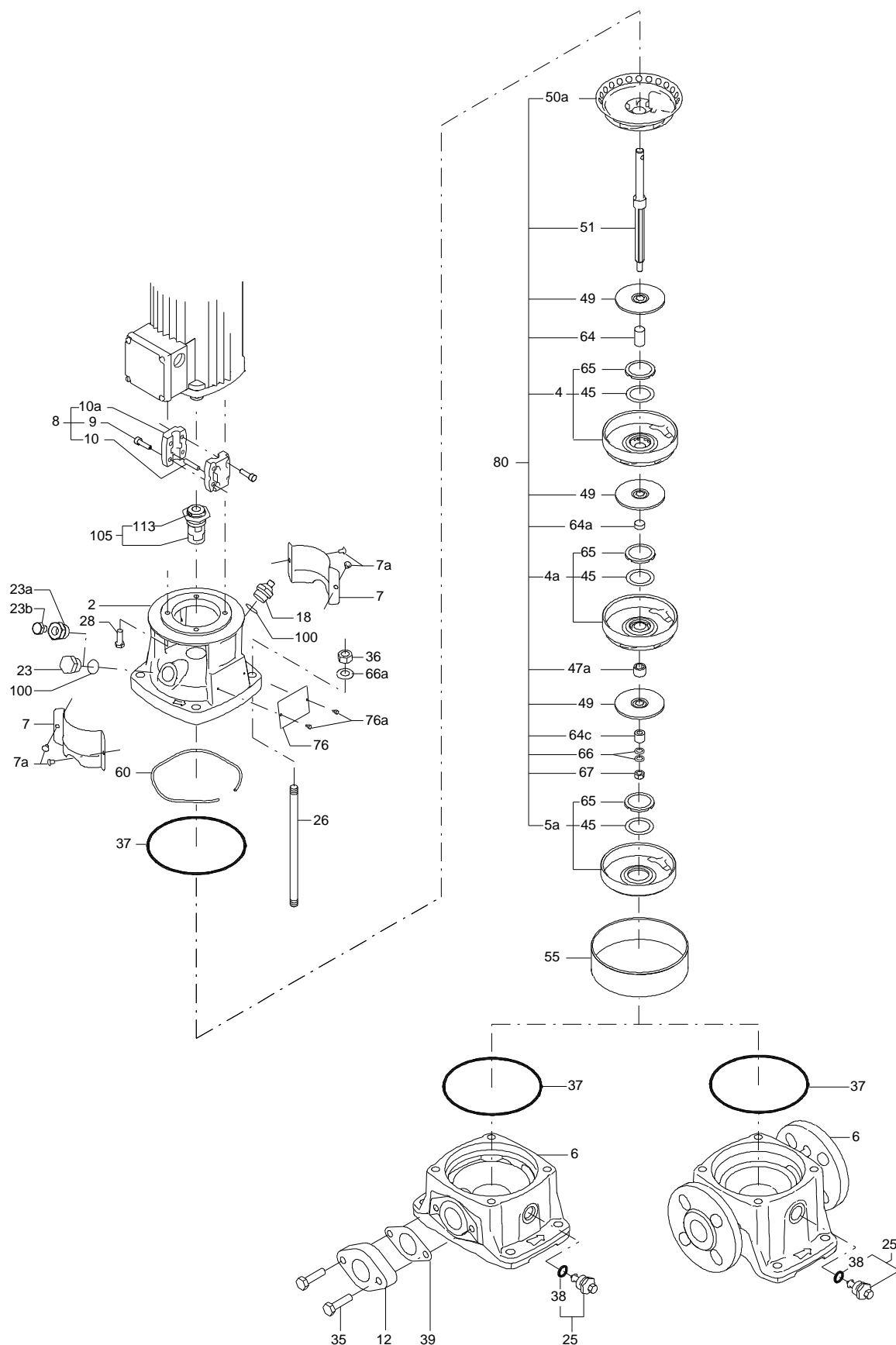
Product name: CR 5-20 A-FGJ-A-V-HQQV

Amount: 1

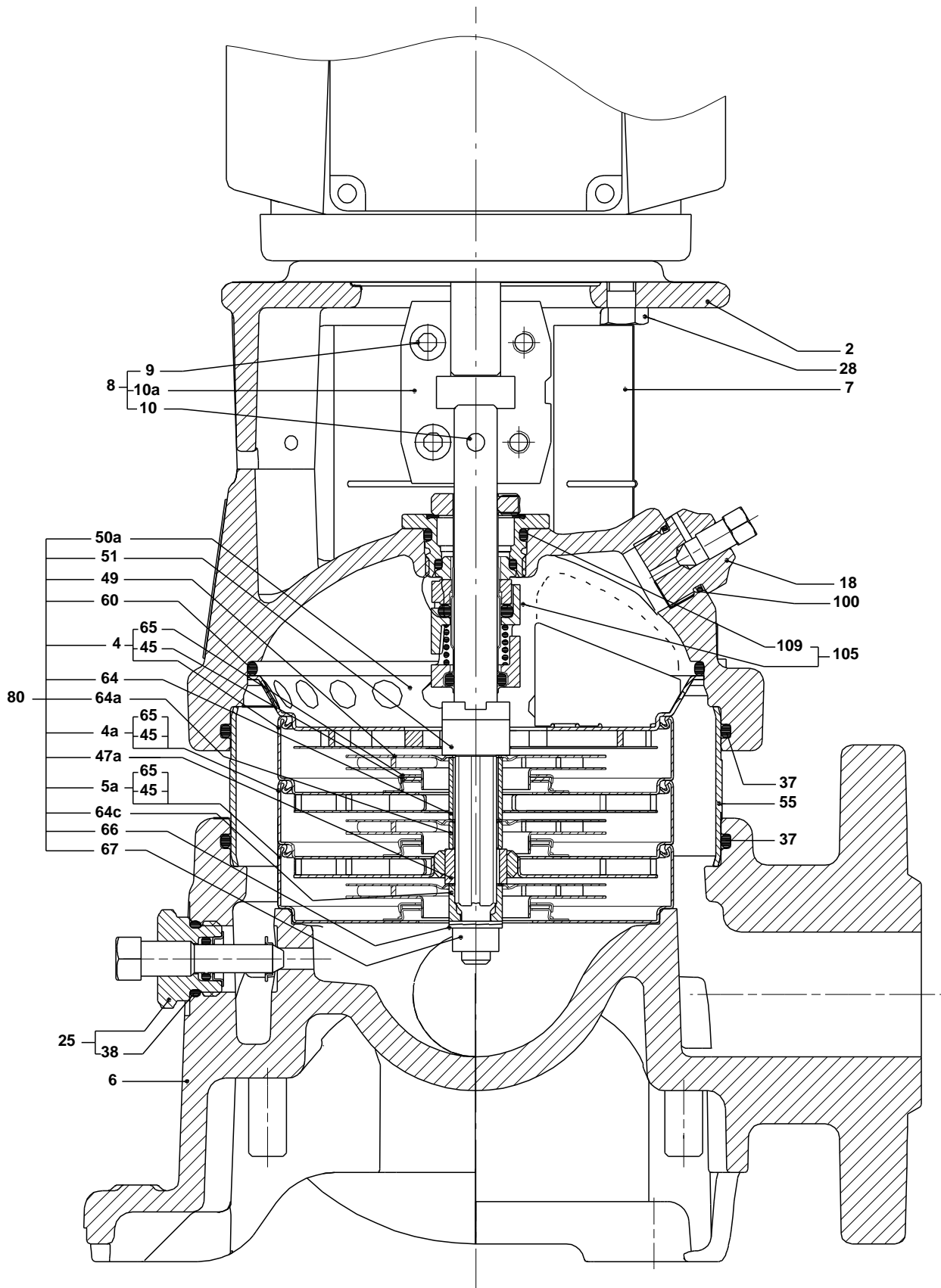
Product No.: 96084342

Total: Price on request

Exploded view (tm020210 4100)



Sectional drawing (tm020211 4100)



TM020211

Parts list CR 5-20, Prod number 96084342

Valid from 1.1.2004 (0401)

| Position | Description | Annotation | Classification data | Part No. | Count | Unit |
|----------|---------------------------|------------|------------------------|----------|-------|------|
| - | Base cpl. | | | | 1 | pcs |
| 6 | Base | | | | 1 | |
| - | Sealing parts | | | | 1 | pcs |
| - 25 | Drain plug w/bypass valve | | | | 1 | |
| 38 | O-ring | | Diameter: 16,3 | | | |
| | | | Material type: FKM | | | |
| | | | Thickness: 2,4 | | | |
| 37 | O-ring | | Diameter: 137,5 | | 2 | |
| | | | Material type: FKM | | | |
| | | | Thickness: 3,3 | | | |
| 100 | O-ring | | Diameter: 16,3 | | 2 | |
| | | | Material type: FKM | | | |
| | | | Thickness: 2,4 | | | |
| - 2 | Pump head cpl. | | | | 1 | pcs |
| 1 | Adapter flange | | | | 1 | |
| 2 | Pump head | | | | 1 | |
| 7 | Coupling guard | | | | 2 | |
| 7a | Thread cutting screw | | | | 4 | |
| - 18 | Air vent screw | | | | 1 | |
| | Plug | | | | | |
| | Spindle | | | | | |
| - 25 | Drain plug | | | | 1 | |
| 23 | Pipe plug | | | | | |
| 25 | Drain plug | | | | | |
| 28 | Hex head bolt | | | | 4 | |
| 60 | Formed wire spring | | | | 1 | |
| + 8 | Coupling | | | | 1 | pcs |
| 26 | Staybolt | | Length: 562 | | 4 | pcs |
| | | | Thread: M12 | | | |
| 36a | Washer | | Designation: DIN 125 A | | 4 | pcs |
| | | | Inner diameter: 13 | | | |
| | | | Outer diameter: 24 | | | |
| | | | Thickness: 2,5 | | | |
| 55 | Outer sleeve | | | | 1 | pcs |
| 66a | Nut | | Thread: M12 | | 4 | pcs |
| + 80 | Chamber stack | | | | 1 | pcs |
| - 105 | Shaft seal | | Material type: HQQV | | 1 | pcs |
| | O-ring | | | | 1 | |
| | O-ring | | | | 1 | |
| | O-ring | | | | 1 | |
| | Seal driver, upper | | | | 1 | |
| | Seal driver, lower | | | | 1 | |
| | Spacer ring | | | | 1 | |
| | Pipe | | | | 1 | |
| | Plug | | | | 1 | |
| | Plug | | | | 1 | |
| | Compression spring | | | | 1 | |
| | Socket set screw | | | | 3 | |
| 103 | Seal ring, stationary | | | | 1 | |
| 105 | Seal ring, rotating | | | | 1 | |
| 109 | O-ring | | | | 1 | |
| 113 | Driver | | | | 1 | |