

PROJECT: _____	UNIT TAG: _____	QUANTITY: _____
REPRESENTATIVE: _____	TYPE OF SERVICE: _____	DATE: _____
ENGINEER: _____	SUBMITTED BY: _____	DATE: _____
CONTRACTOR: _____	APPROVED BY: _____	DATE: _____
	ORDER NO.: _____	DATE: _____

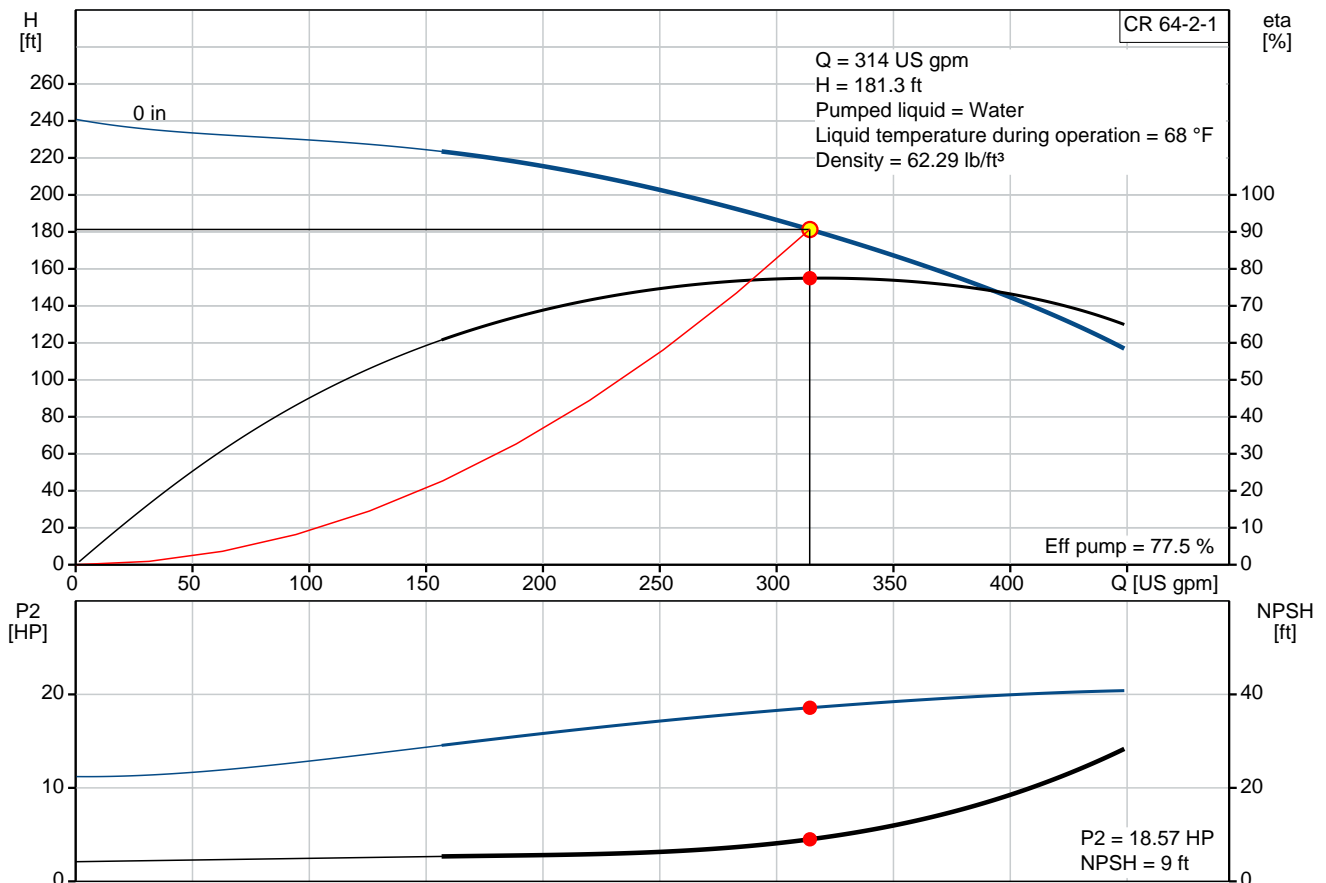


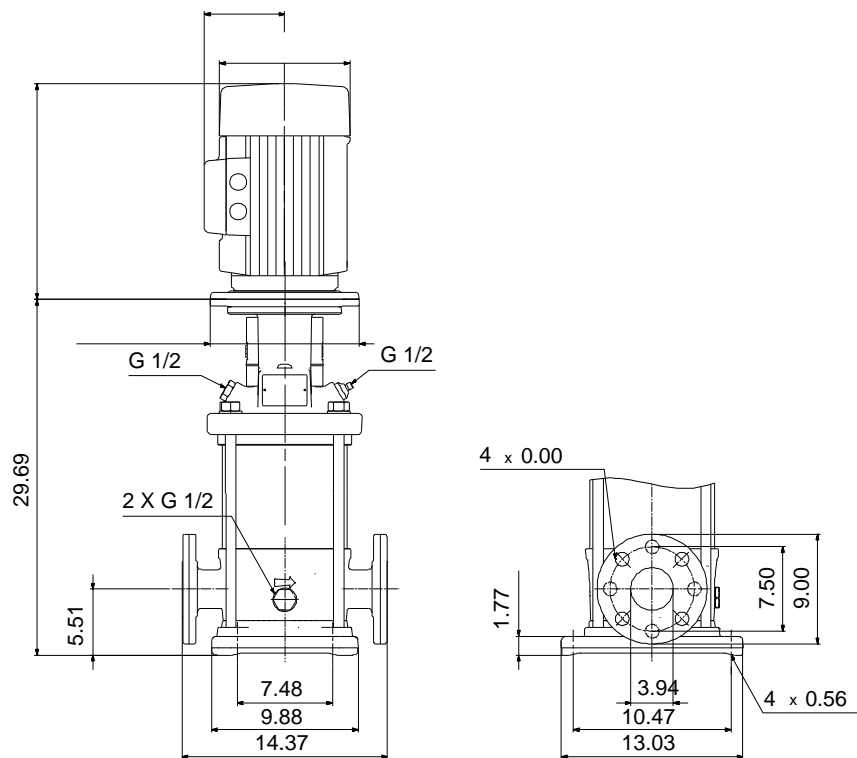
### CR 64-2-1

Vertical, multistage centrifugal pump with suction and discharge ports on the same level. The pump head and base are in cast iron. All other wetted parts are in stainless steel (EN 1.4301) (AISI 304)

Product photo could vary from the actual product

Conditions of Service	Pump Data	Motor Data
Flow: 314 US gpm	Max pressure at stated temperature: 232 psi / 194 °F	Main frequency: 60 Hz
Head: 181.3 ft	Shaft seal: HQQV	
Efficiency: _____	Product number: 96416012	
Liquid: Water		
Temperature: 68 °F		
NPSH required: 9 ft		
Viscosity: _____		
Specific Gravity: 1.000		





**Materials:**

Base: Cast iron  
EN 1563 EN-GJS-500-7  
ASTM A536 80-55-06

Impeller: Stainless steel  
AISI 304  
EN 1.4301

Material code: A

Code for rubber: V

## Tender Text



Product photo could vary from the actual product

Product No.: [96416012](#)

### CR 64-2-1 A-G-A-V-HQQV

Vertical, non-self-priming, multistage, in-line, centrifugal pump for installation in pipe systems and mounting on a foundation.

The pump has the following characteristics:

- Impellers and intermediate chambers are made of
- The shaft seal has assembly length according to DIN 24960.
- Power transmission is via cast iron split coupling.

#### Controls:

Frequency converter: NONE

#### Liquid:

Pumped liquid: Water

Liquid temperature during operation: 68 °F

Density: 62.29 lb/ft<sup>3</sup>

#### Technical:

Speed for pump data: 3497 rpm

Actual calculated flow: 314 US gpm

Resulting head of the pump: 181.3 ft

Pump orientation: Vertical

Shaft seal arrangement: Single

Code for shaft seal: HQQV

Curve tolerance: ISO9906:2012 3B

#### Materials:

Base: Cast iron  
EN 1563 EN-GJS-500-7  
ASTM A536 80-55-06

Impeller: Stainless steel  
EN 1.4301  
AISI 304

Bearing material: SIC

Support bearing: Graflon

#### Installation:

Max pressure at stated temperature: 232 psi / 194 °F  
232 psi / -4 °F

Type of connection: ANSI

Size of suction port: 4 inch

Size of outlet port: 4 inch



Company name:

Created by:

Phone:

Date:

2/20/2018


Pressure rating: PN 16  
Flange size for motor: 254TC  
Flange rating inlet: 150 lb

**Electrical data:**

Motor standard: NEMA  
Power (P2) required by pump: 20 HP

**Others:**

Net weight: 164 lb  
Gross weight: 182 lb  
Shipping volume: 10.9 ft<sup>3</sup>

Position	Count	Description
	1	<p><b>CR 64-2-1 A-G-A-V-HQQV</b></p>  <p>Product photo could vary from the actual product</p> <p>Product No.: <a href="#">96416012</a></p> <p>Vertical, non-self-priming, multistage, in-line, centrifugal pump for installation in pipe systems and mounting on a foundation.</p> <p>The pump has the following characteristics:</p> <ul style="list-style-type: none"> <li>- Impellers and intermediate chambers are made of</li> <li>- The shaft seal has assembly length according to DIN 24960.</li> <li>- Power transmission is via cast iron split coupling.</li> </ul> <p>Controls:</p> <p>Frequency converter: NONE</p> <p><b>Liquid:</b></p> <p>Pumped liquid: Water</p> <p>Liquid temperature during operation: 68 °F</p> <p>Density: 62.29 lb/ft³</p> <p><b>Technical:</b></p> <p>Speed for pump data: 3497 rpm</p> <p>Actual calculated flow: 314 US gpm</p> <p>Resulting head of the pump: 181.3 ft</p> <p>Pump orientation: Vertical</p> <p>Shaft seal arrangement: Single</p> <p>Code for shaft seal: HQQV</p> <p>Curve tolerance: ISO9906:2012 3B</p> <p><b>Materials:</b></p> <p>Base: Cast iron EN 1563 EN-GJS-500-7 ASTM A536 80-55-06</p> <p>Impeller: Stainless steel EN 1.4301 AISI 304</p> <p>Bearing material: SIC</p> <p>Support bearing: Graflon</p> <p><b>Installation:</b></p> <p>Max pressure at stated temperature: 232 psi / 194 °F 232 psi / -4 °F</p> <p>Type of connection: ANSI</p> <p>Size of suction port: 4 inch</p> <p>Size of outlet port: 4 inch</p> <p>Pressure rating: PN 16</p> <p>Flange size for motor: 254TC</p>



Company name:

Created by:

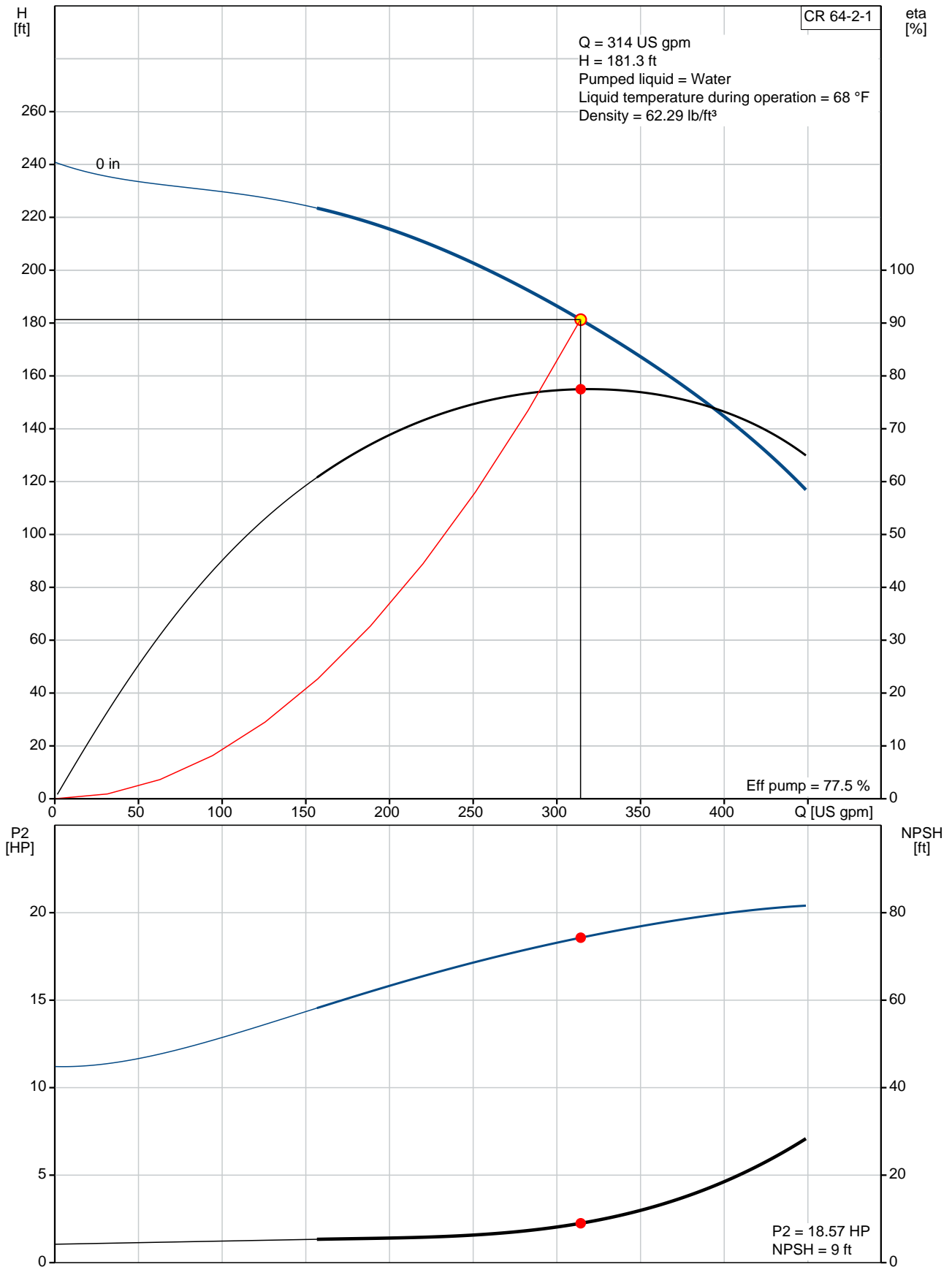
Phone:

Date:

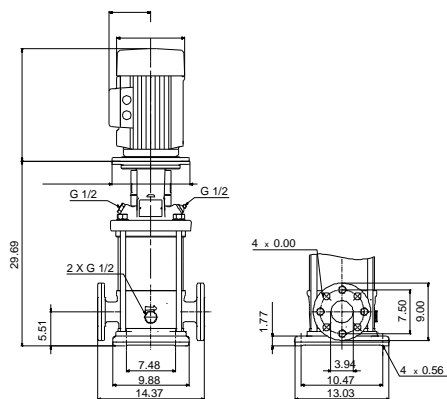
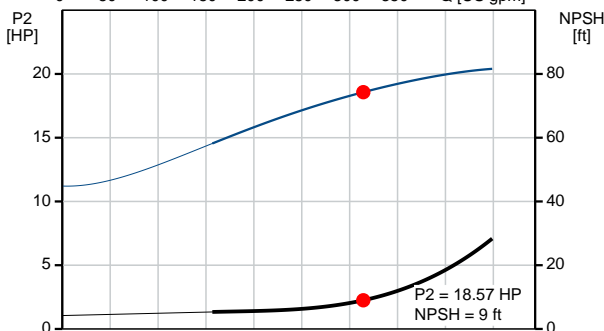
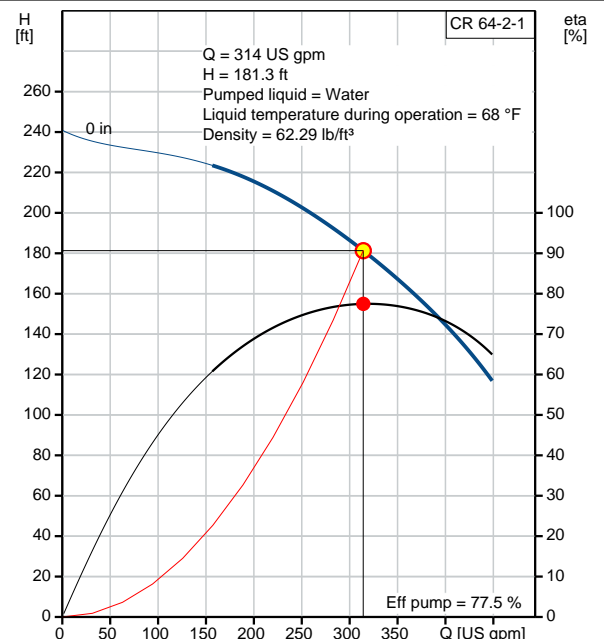
2/20/2018

Position	Count	Description
		Flange rating inlet: 150 lb
		<b>Electrical data:</b>
		Motor standard: NEMA
		Power (P2) required by pump: 20 HP
		<b>Others:</b>
		Net weight: 164 lb
		Gross weight: 182 lb
		Shipping volume: 10.9 ft³

## 96416012 CR 64-2-1 60 Hz



Description	Value
<b>General information:</b>	
Product name:	CR 64-2-1 A-G-A-V-HQQV
Product No.:	96416012
EAN:	5700390656270
<b>Technical:</b>	
Speed for pump data:	3497 rpm
Actual calculated flow:	314 US gpm
Resulting head of the pump:	181.3 ft
Stages:	2
Impellers:	2
Number of reduced-diameter impellers:	1
Low NPSH:	N
Pump orientation:	Vertical
Shaft seal arrangement:	Single
Code for shaft seal:	HQQV
Curve tolerance:	ISO9906:2012 3B
Pump version:	A
Model:	B
<b>Materials:</b>	
Base:	Cast iron
	EN 1563 EN-GJS-500-7
	ASTM A536 80-55-06
Impeller:	Stainless steel
	EN 1.4301
	AISI 304
Material code:	A
Code for rubber:	V
Bearing material:	SIC
Support bearing:	Graflon
<b>Installation:</b>	
Max pressure at stated temperature:	232 psi / 194 °F
	232 psi / -4 °F
Type of connection:	ANSI
Connect code:	G
Size of suction port:	4 inch
Size of outlet port:	4 inch
Pressure rating:	PN 16
Flange size for motor:	254TC
Flange rating inlet:	150 lb
<b>Liquid:</b>	
Pumped liquid:	Water
Liquid temperature during operation:	68 °F
Density:	62.29 lb/ft³
<b>Electrical data:</b>	
Motor standard:	NEMA
Power (P2) required by pump:	20 HP
<b>Controls:</b>	
Frequency converter:	NONE
<b>Others:</b>	
Net weight:	164 lb
Gross weight:	182 lb







Company name:

Created by:

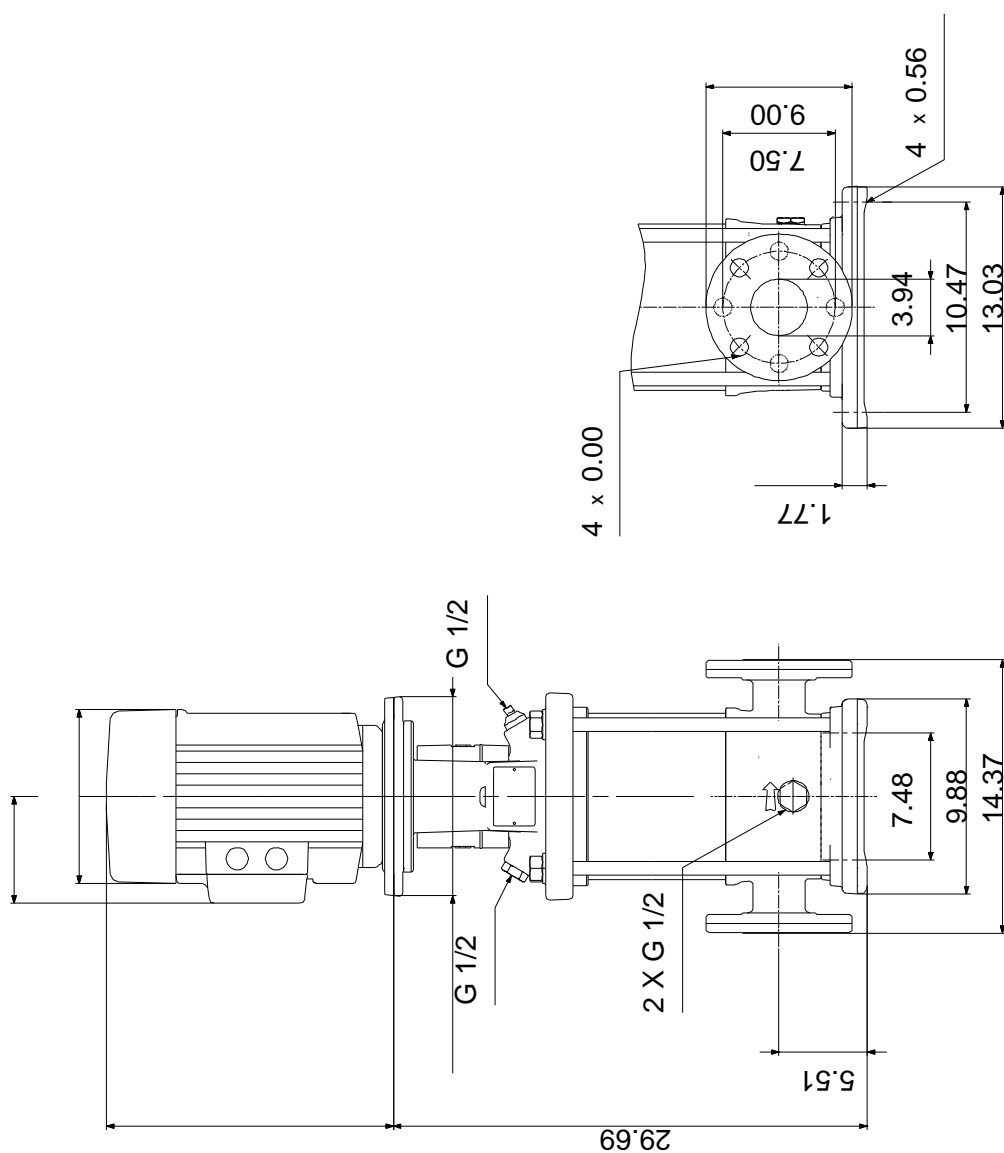
Phone:

Date:

2/20/2018

Description	Value
Shipping volume:	10.9 ft³
Sales region:	Namreg

## 96416012 CR 64-2-1 60 Hz



Note! All units are in [mm] unless otherwise stated.  
Disclaimer: This simplified dimensional drawing does not show all details.



Company name:

Created by:

Phone:

Date:

2/20/2018

---

**Order Data:**

Product name: CR 64-2-1 A-G-A-V-HQQV

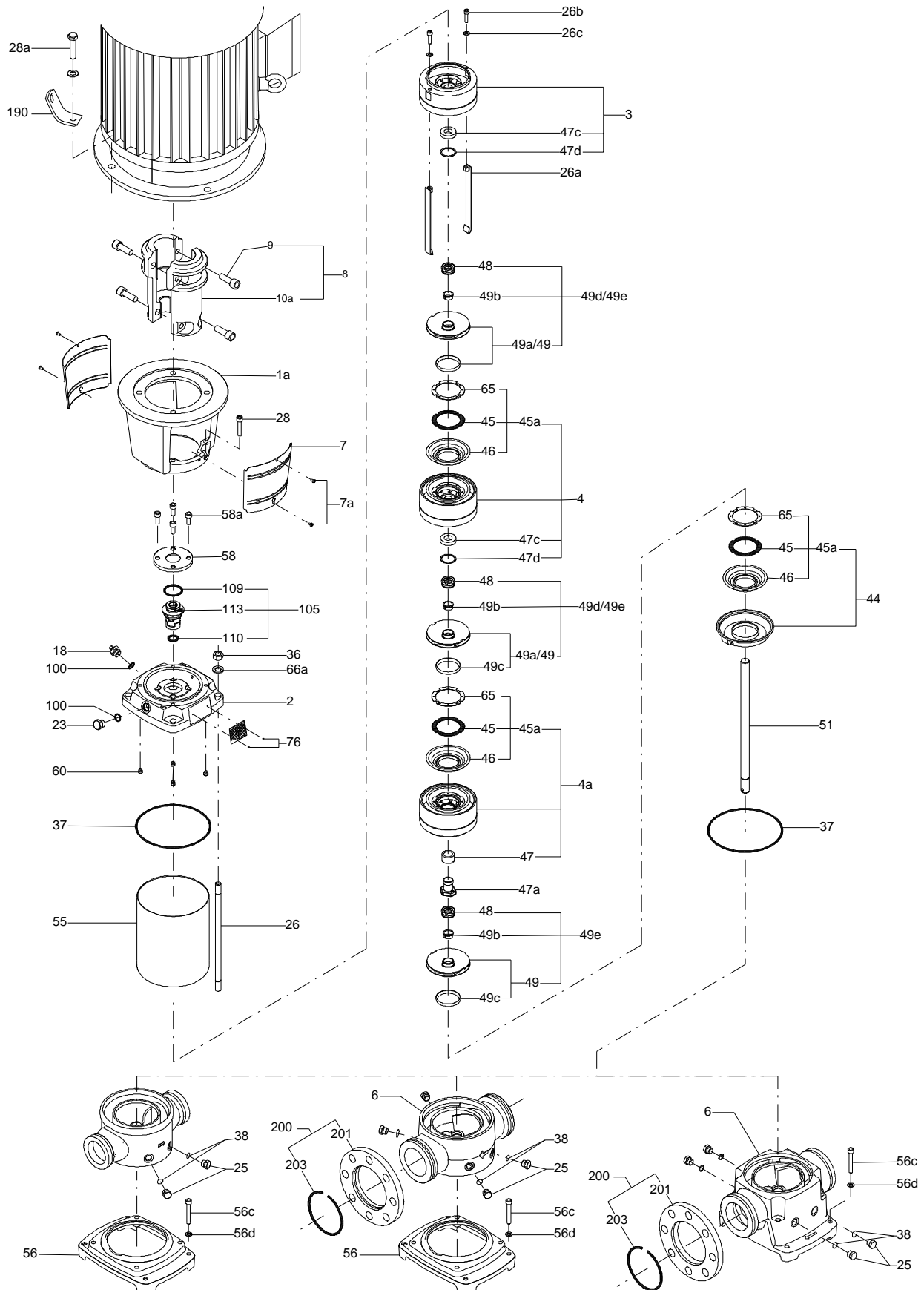
Amount: 1

Product No.: 96416012

Total: Price on request

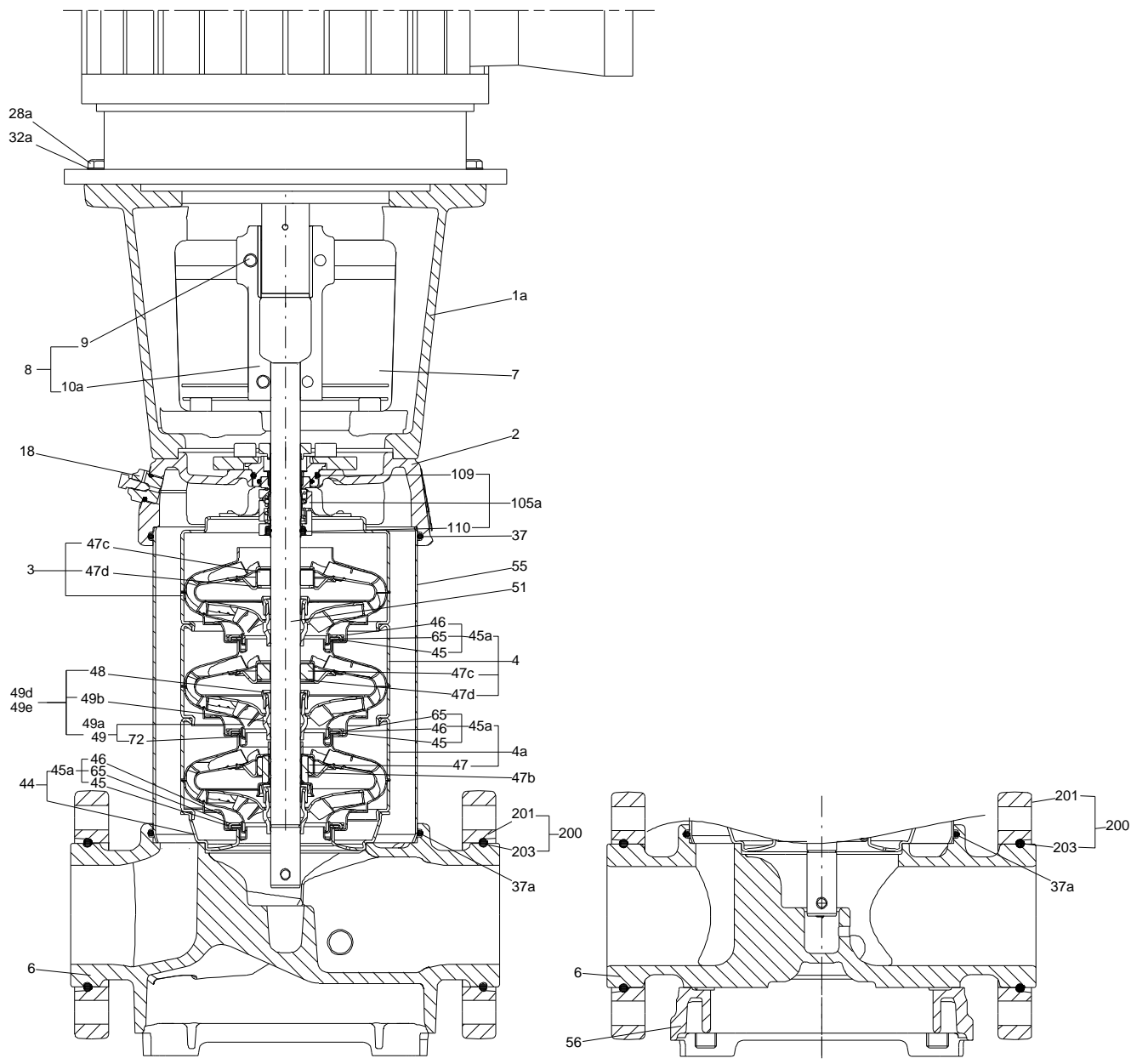
---

## Exploded view (TM065558 LACR )



TM065558

## Sectional drawing ( TM065571 LACR)



**Parts list CR 64-2-1, Prod number 96416012**
**Valid from 3.3.2014 (1410)**

Position	Description	Annotation	Classification data	Part No.	Count	Unit
	Hex head screw				1	pcs
	Washer				1	pcs
-	Flange cpl.				2	pcs
201	Flange		Pressure (bar): 150-4 Dimension: 229X25		1	
203	Lock ring				1	
-	Motor stool cpl.				1	pcs
1a	Motor stool				1	
7	Coupling guard				2	
7a	Socket button head screw				4	
28	Hex socket head cap screw		Designation: DIN 912 Length: 50 Thread: M10		4	
28a	Hex socket head cap screw		Length: 13 Thread: 1/2"		4	
	Quick guide				1	pcs
	Shaft end				1	pcs
	Bar				1	pcs
	Spring lock washer				1	pcs
- 1	Basic unit				1	pcs
- 2a	Pump head cpl.				1	
2a	Pump head					
9	Hex socket head cap screw		Designation: DIN 912 Length: 25 Thread: M10			
- 18	Air vent screw					
	Plug					
	Spindle					
23	Plug					
37	O-ring		Diameter: 216 Material type: FKM Thickness: 4			
58	Cover					
60	Spring					
100	O-ring		Diameter: 16,3 Material type: FKM Thickness: 2,4			
- 6b	Base cpl.		Rubber type: FKM		1	
6	Base					
25	Plug					
32	Washer		Designation: DIN 125A Inner diameter: 6,4 Outer diameter: 12,0 Thickness: 1,6			
37	O-ring		Diameter: 216 Material type: FKM Thickness: 4			
38	O-ring		Diameter: 16,3 Material type: FKM Thickness: 2,4			
26	Staybolt		Length: 333 Thread: M16		4	
36	Hex nut		Thread: M16		4	

Position	Description	Annotation	Classification data	Part No.	Count	Unit
55	Outer sleeve		Outer diameter: 216,0 Length: 188,5		1	
66a	Washer		Designation: DIN 125 A Inner diameter: 17 Outer diameter: 30 Thickness: 3		4	
- 80	Chamber stack				1	
- 3	Upper chamber cpl.					
	Chamber					
	Guide vane					
	Cone					
	Guide cup					
	Guide cup					
3	Upper chamber cpl.					
47c	Bush					
47d	Lock ring					
- 4a	Intermediate chamber cpl.					
	Chamber					
	Chamber					
	Guide vane					
	Cone					
	Guide cup					
	Guide cup					
- 45a	Neck ring cpl.					
	Neck ring					
45	Seal ring					
65	Top f/neck ring					
47	Bearing					
26a	Strap cpl.		Length: 174,5 Thread: M8			
26b	Hex socket head cap screw					
26c	Washer		Designation: DIN 125A Inner diameter: 8,4 Outer diameter: 16 Thickness: 1,6			
- 44	Suction interconnector coupling					
	Neck ring					
	Inlet part					
45	Seal ring					
65	Top f/neck ring					
- 47a	Bearing cpl.					
	Disc spring					
	Bearing ring, rotating					
	Holder					
	Driver					
- 49d	Impeller cpl. reduced diameter					
48	Nut					
- 49a	Impeller, reduced diameter					
	Impeller hub					
49c	Wear ring					
49b	Split cone					
- 49e	Impeller cpl.					
48	Nut					
- 49	Impeller					
	Impeller hub					
49c	Wear ring					
49b	Split cone					
51	Shaft					
- 8	Coupling cpl.		Dimension: 22/41,2		1	pcs



Company name:

Created by:

Phone:

Date: 2/20/2018

Position	Description	Annotation	Classification data	Part No.	Count	Unit
9	Hex socket head cap screw		Designation: DIN 912		4	
			Length: 25			
			Thread: M10			
10a	Coupling half				2	
36	Hex nut				2	pcs
- 105	Shaft seal		Material type: HQQV		1	pcs
	Adjusting fork				1	
109	O-ring		Diameter: 44,45		1	
			Material type: FKM			
			Thickness: 3,53			
110	O-ring		Diameter: 21,5		1	
			Thickness: 4,25			