

PROJECT: _____	UNIT TAG: _____	QUANTITY: _____
REPRESENTATIVE: _____	TYPE OF SERVICE: _____	DATE: _____
ENGINEER: _____	SUBMITTED BY: _____	DATE: _____
CONTRACTOR: _____	APPROVED BY: _____	DATE: _____
	ORDER NO.: _____	DATE: _____

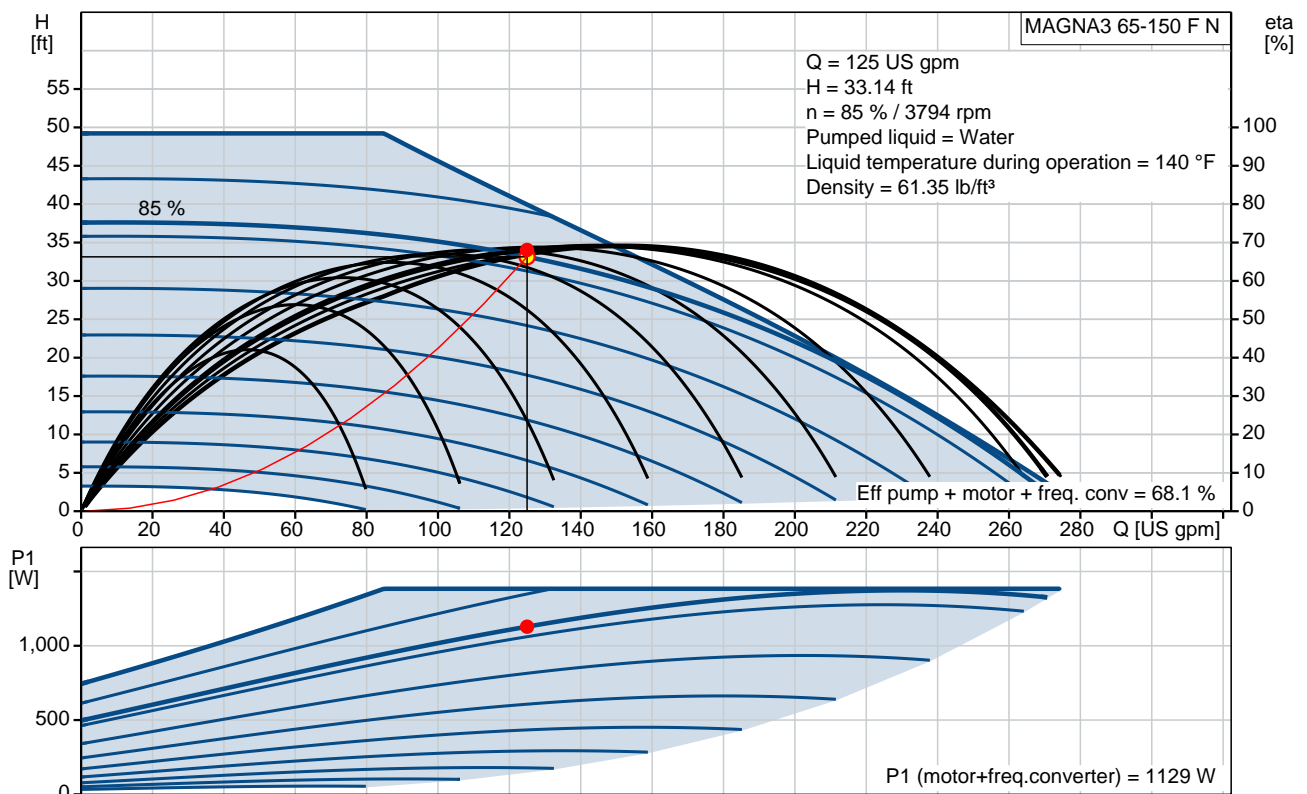
MAGNA3 65-150 F N

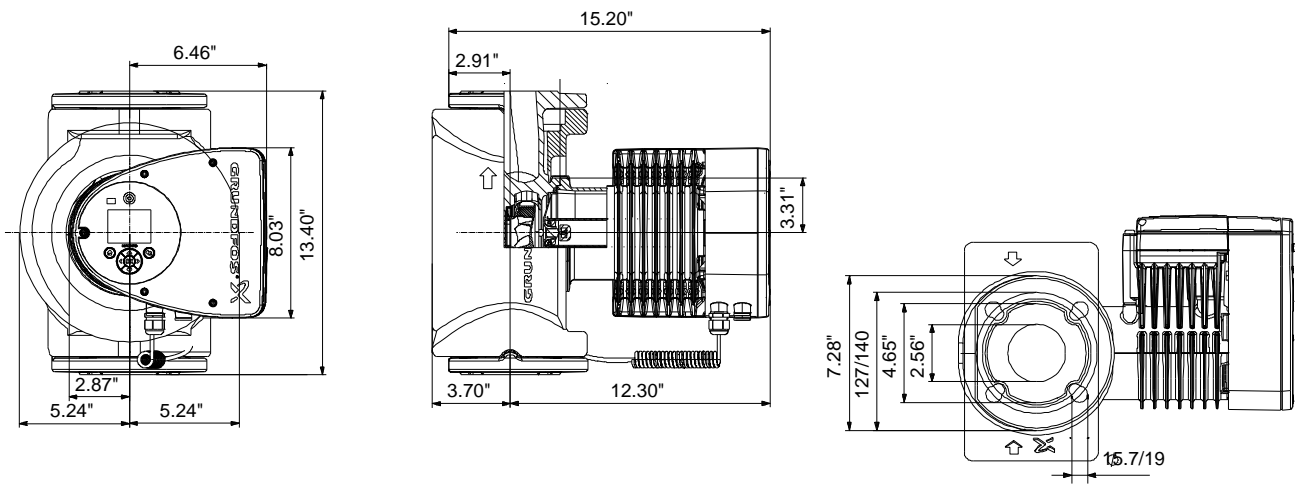


Full range of intelligent, high-efficiency circulators for heating, cooling, ground source heat pump systems and domestic hot water applications

Product photo could vary from the actual product

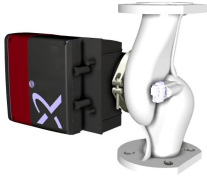
Conditions of Service		Pump Data		Motor Data	
Flow:	125 US gpm	Maximum operating pressure:	174.05 psi	P1 max:	29 .. 1385 W
Head:	33.14 ft	Liquid temperature range:	14 .. 230 °F	Rated voltage:	208-230 V
Efficiency:	68.1 %	Maximum ambient temperature:	104 °F	Main frequency:	60 Hz
Liquid:	Water	Approvals:	98544604	Enclosure class:	X4D
Temperature:	140 °F	Flange standard:	GF	Insulation class:	F
NPSH required:	ft	Pipe connection:	GF65		
Viscosity:	_____	Product number:	98126854		
Specific Gravity:	0.985				





Materials:

Pump housing: Stainless steel
 EN 1.4308
 ASTM 351 CF8
 Impeller: PES 30%GF

Count	Description
1	<p data-bbox="225 338 466 367">MAGNA3 65-150 F N</p> <div data-bbox="311 427 518 604">  </div> <p data-bbox="225 660 491 689">Product No.: 98126854</p> <p data-bbox="225 719 561 748">MAGNA3 – More than a pump</p> <p data-bbox="225 750 1452 826">With its unrivalled efficiency, all-encompassing range and built-in communication capabilities plus functionalities replacing system components, the MAGNA3 is ideal for engineers and specifiers looking to create high-performance systems for buildings.</p> <p data-bbox="225 835 1410 889">This pump in the Grundfos Master Class will fit both heating and cooling applications perfectly, making it the obvious choice for almost any building project – old or new.</p> <p data-bbox="225 922 1441 976">The MAGNA3 is of the canned-rotor type, i.e. pump and motor form an integral unit without shaft seal and with only two gaskets for sealing. The bearings are lubricated by the pumped liquid.</p> <p data-bbox="225 981 1190 1010">The innovative clamp with only one screw enables easy repositioning of the pump head.</p> <p data-bbox="225 1012 1319 1041">The MAGNA3 is a pump with no maintenance requirements and with extremely low Life Cycle Cost.</p> <p data-bbox="225 1070 703 1099">The pump is characterised by the following:</p> <ul data-bbox="225 1102 813 1364" style="list-style-type: none"> • controller integrated in the control box • control panel with TFT display on the control box • control box prepared for optional CIM modules • built-in differential-pressure and temperature sensor • cast-iron pump housing (depending on model) • carbon-fiber-reinforced composite rotor can • stainless-steel bearing plate and rotor cladding • aluminium alloy stator housing • air-cooled power electronics <p data-bbox="225 1366 649 1395">The MAGNA3 is a single-phase pump.</p> <p data-bbox="225 1426 477 1456">Characteristic features</p> <ul data-bbox="225 1458 1449 1805" style="list-style-type: none"> • AUTOADAPT. • FLOWADAPT and FLOWLIMIT (more than a pump function as it reduces the need for pump throttling valves). • Proportional-pressure control. • Constant-pressure control. • Constant-temperature control. • Constant-curve duty. • Max. or min. curve duty. • Automatic Night Setback. • No external motor protection required. • Insulating shells supplied with single-head pumps for heating systems. • Large temperature range where the liquid temperature and the ambient temperature are independent of each other. <p data-bbox="225 1839 400 1868">Communication</p> <p data-bbox="225 1870 839 1899">The MAGNA3 enables communication via the following:</p> <ul data-bbox="225 1901 936 2047" style="list-style-type: none"> • wireless Grundfos GO Remote • fieldbus communication via CIM modules • digital inputs • relay outputs • analog input (more than a pump function as heat energy meter) <p data-bbox="225 2078 561 2107">Motor and electronic controller</p>

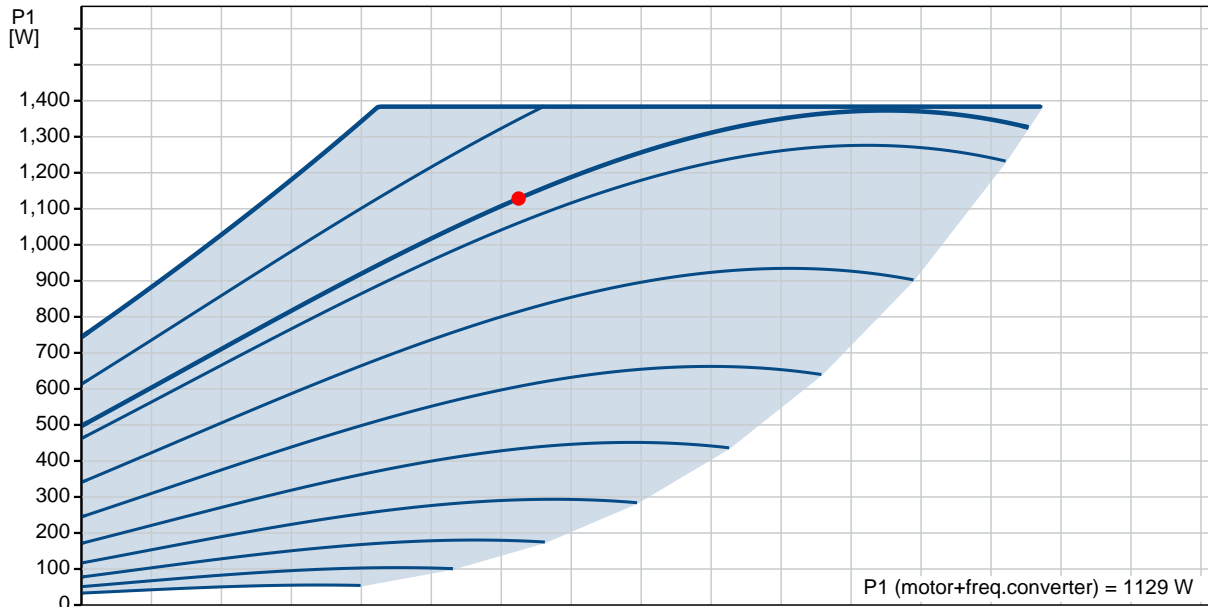
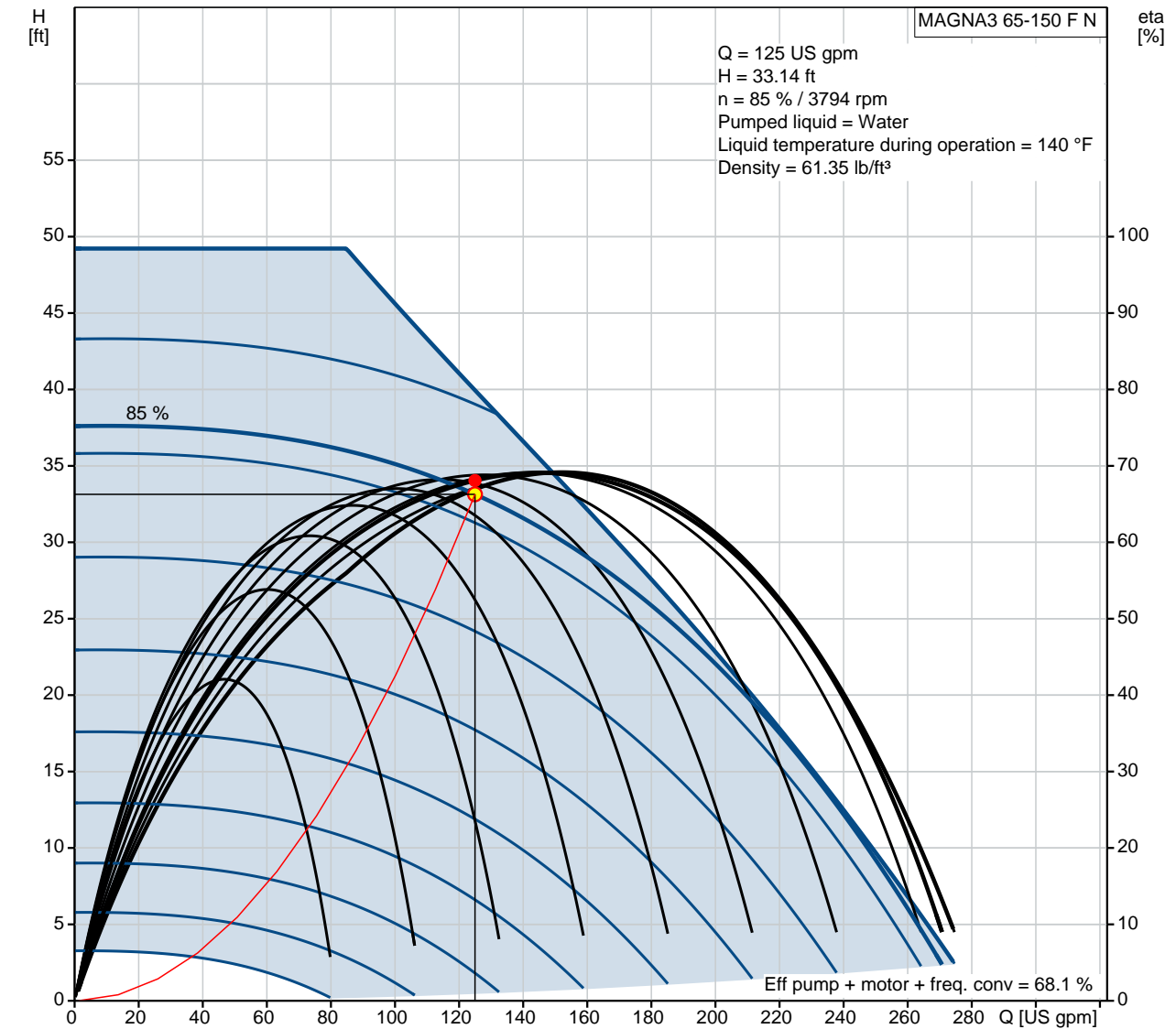
Count	Description
	<p>The MAGNA3 incorporates a 4-pole synchronous, permanent-magnet motor (PM motor). This motor type is characterised by higher efficiency than a conventional asynchronous squirrel-cage motor.</p> <p>The pump speed is controlled by an integrated frequency converter.</p> <p>A differential-pressure and temperature sensor is incorporated in the pump.</p> <p>Liquid:</p> <p>Pumped liquid: Water</p> <p>Liquid temperature range: 14 .. 230 °F</p> <p>Selected liquid temperature: 140 °F</p> <p>Density: 61.35 lb/ft³</p> <p>Technical:</p> <p>Actual calculated flow: 125 US gpm</p> <p>Rated flow: 125 US gpm</p> <p>Resulting head of the pump: 33.14 ft</p> <p>TF class: 110</p> <p>Approvals on nameplate: 98544604</p> <p>Materials:</p> <p>Pump housing: Stainless steel EN 1.4308 ASTM 351 CF8</p> <p>Impeller: PES 30%GF</p> <p>Installation:</p> <p>Range of ambient temperature: 32 .. 104 °F</p> <p>Maximum operating pressure: 174.05 psi</p> <p>Flange standard: GF</p> <p>Pipe connection: GF65</p> <p>Pressure stage: PN12</p> <p>Port-to-port length: 13 7/16 in</p> <p>Electrical data:</p> <p>Power input - P1: 29 .. 1385 W</p> <p>Main frequency: 60 Hz</p> <p>Rated voltage: 1 x 208-230 V</p> <p>Maximum current consumption: 0.3 .. 6.1 A</p> <p>Enclosure class (IEC 34-5): X4D</p> <p>Insulation class (IEC 85): F</p> <p>Others:</p> <p>Energy (EEI): 0.17</p> <p>Net weight: 54.2 lb</p> <p>Gross weight: 59.2 lb</p> <p>Shipping volume: 1950 ft³</p>



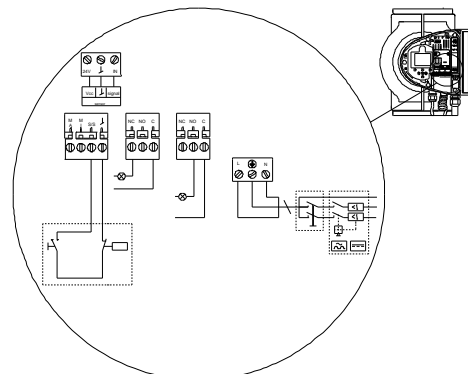
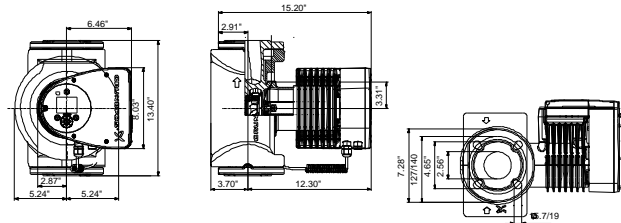
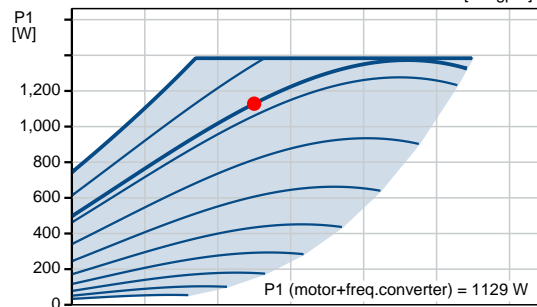
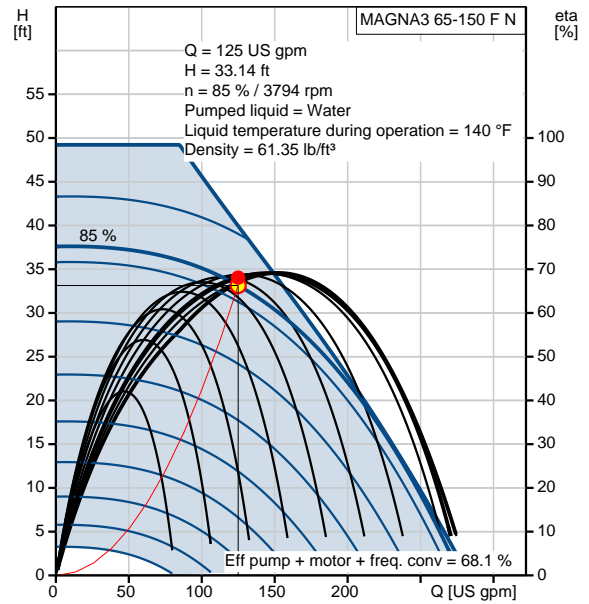
Company name:
Created by:
Phone:

Date: 4/11/2019

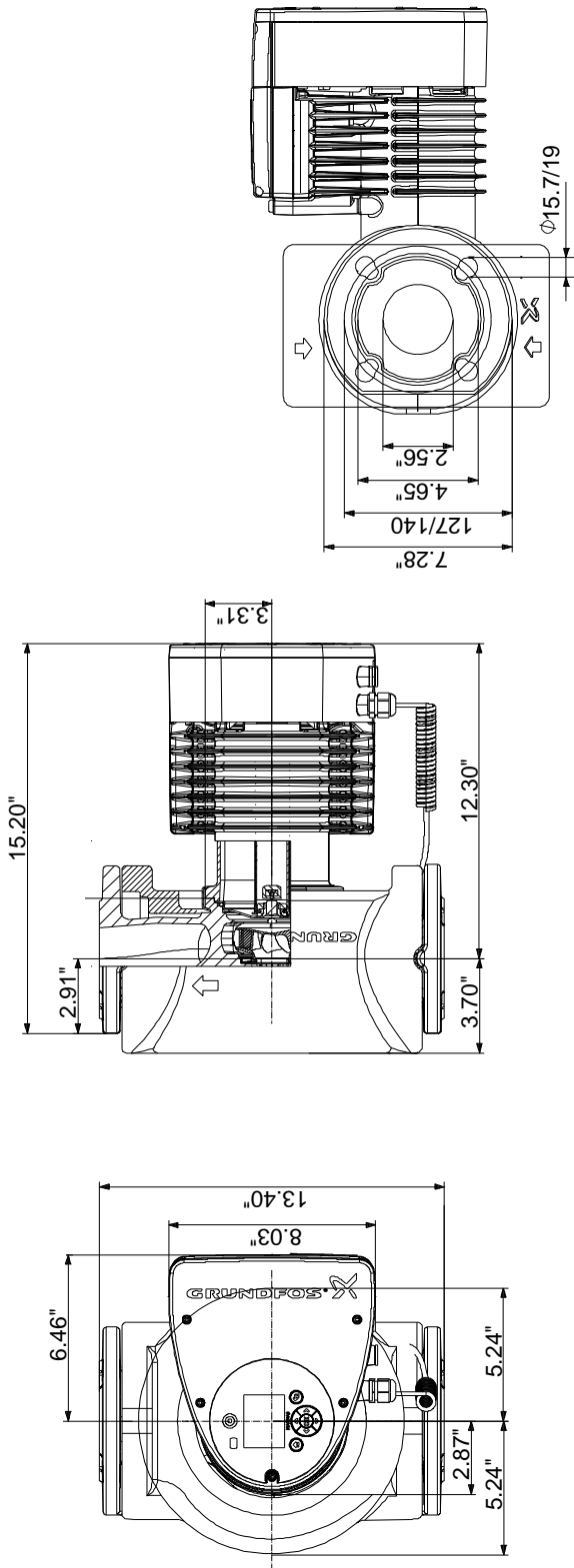
98126854 MAGNA3 65-150 F N 60 Hz



Description	Value
General information:	
Product name:	MAGNA3 65-150 F N
Product No.:	98126854
EAN:	5710629500168
Technical:	
Actual calculated flow:	125 US gpm
Rated flow:	125 US gpm
Resulting head of the pump:	33.14 ft
Head max:	49.22 ft
TF class:	110
Approvals on nameplate:	98544604
Model:	D
Materials:	
Pump housing:	Stainless steel EN 1.4308
Impeller:	ASTM 351 CF8 PES 30%GF
Installation:	
Range of ambient temperature:	32 .. 104 °F
Maximum operating pressure:	174.05 psi
Flange standard:	GF
Pipe connection:	GF65
Pressure stage:	PN12
Port-to-port length:	13 7/16 in
Liquid:	
Pumped liquid:	Water
Liquid temperature range:	14 .. 230 °F
Selected liquid temperature:	140 °F
Density:	61.35 lb/ft³
Electrical data:	
Power input - P1:	29 .. 1385 W
Main frequency:	60 Hz
Rated voltage:	1 x 208-230 V
Maximum current consumption:	0.3 .. 6.1 A
Enclosure class (IEC 34-5):	X4D
Insulation class (IEC 85):	F
Others:	
Energy (EEI):	0.17
Net weight:	54.2 lb
Gross weight:	59.2 lb
Shipping volume:	1950 ft³



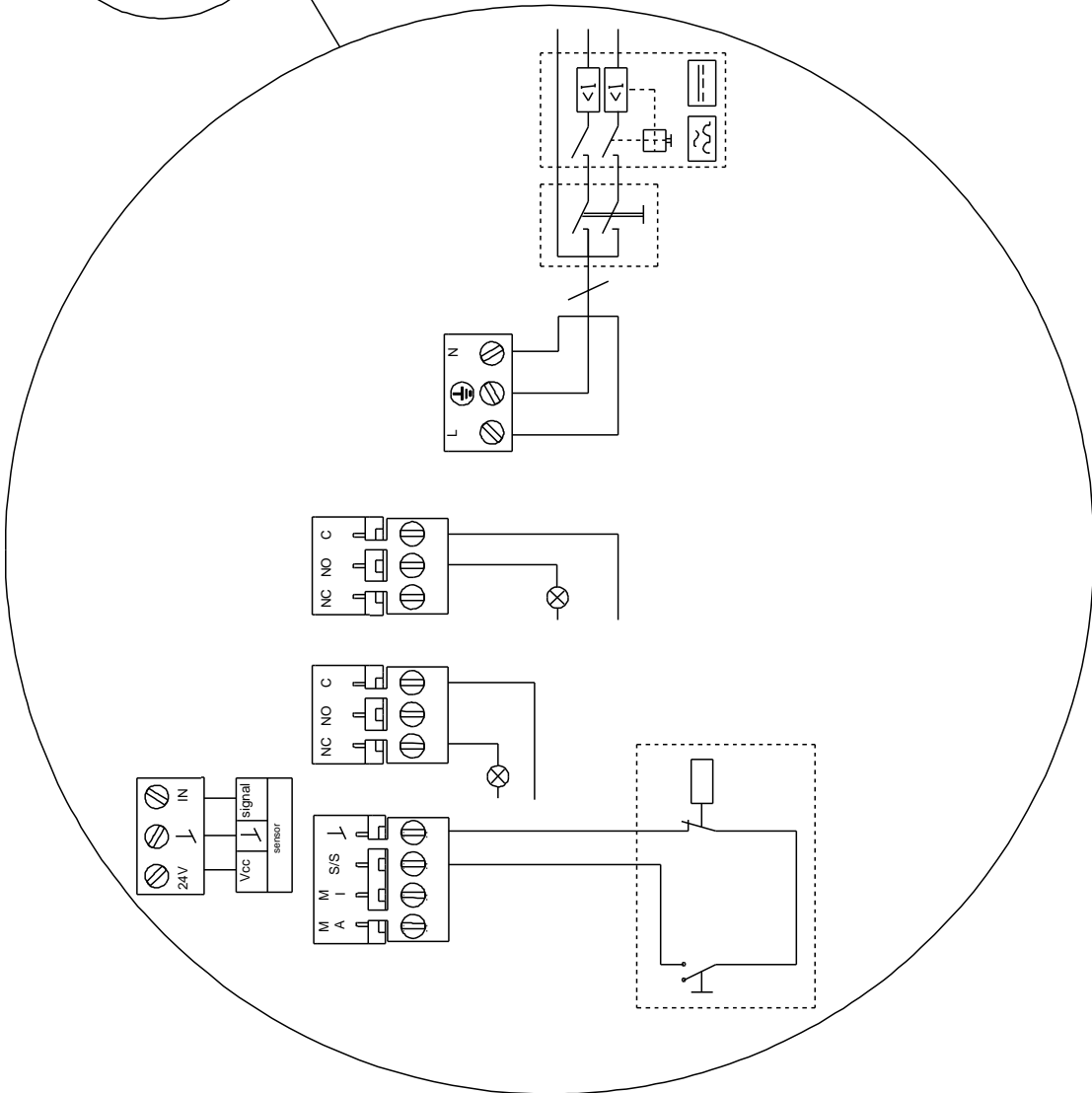
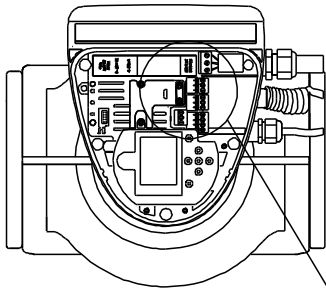
98126854 MAGNA3 65-150 F N 60 Hz



Note! All units are in [in] unless otherwise stated.

Disclaimer: This simplified dimensional drawing does not show all details.

98126854 MAGNA3 65-150 F N 60 Hz



All units are [in] unless otherwise presented.



Company name:

Created by:

Phone:

Date: 4/11/2019

Order Data:

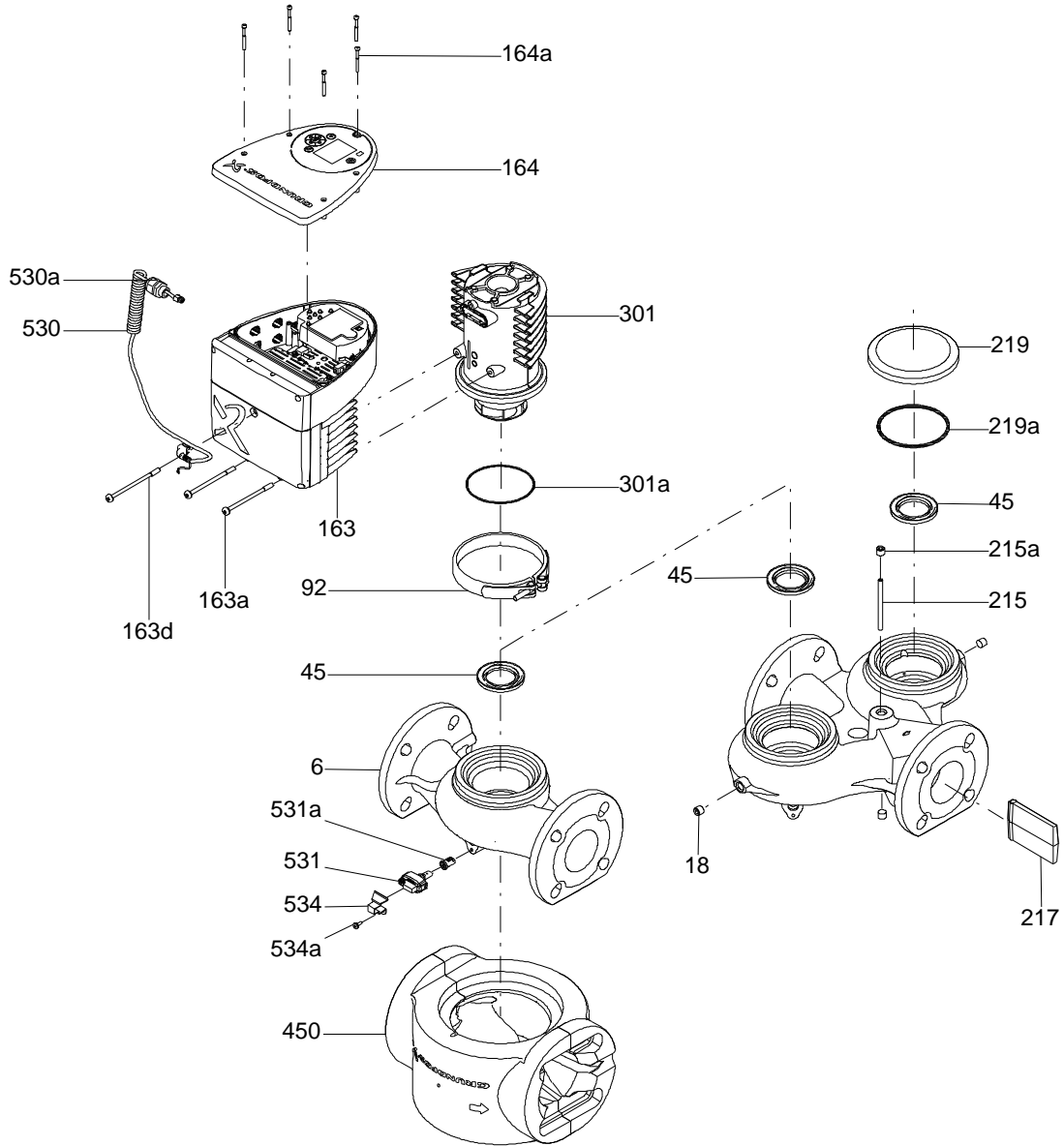
Product name: MAGNA3 65-150 F N

Amount: 1

Product No.: 98126854

Total: Price on request

(TM057299 MAGNA3 750-1600W)



**Parts list MAGNA3 65-150 F N, Prod number 98126854
Produced After 1732 (production year and week number)**

Position	Description	Annotation	Classification data	Part No.	Count	Unit
-	Pump housing cpl.				1	pcs
6	Pump housing				1	
45	Neck ring cpl.				1	
-	Control box				1	pcs
- 162	Control box cpl.				1	
	Spacer					
	Controlboard Leaded					
7a	Combi Slot Torx screw					
159a	Cable w/plug					
159b	Connector plug 3-pole					
159b	Connector plug 3-pole					
159b	Connector plug 4-pole					
159c	Pan washer head screw					
159d	Board					
160	Spacer					
163b	Compression spring					
164	Cover					
164a	Screw DELTA PT					
273b	Battery					
501	Displayboard cpl.					
163	Control box				1	
92	Clamp cpl.				1	pcs
163a	Pan head screw				2	pcs
163d	Pan head screw				1	pcs
301	Pump head				1	pcs
301b	Protector				1	pcs
450	Insulation				1	pcs
531	Sensor				1	pcs
534	Bracket				1	pcs
534a	Pan head thread forming screw				1	pcs