

| | | |
|-----------------------|------------------------|-----------------|
| PROJECT: _____ | UNIT TAG: _____ | QUANTITY: _____ |
| REPRESENTATIVE: _____ | TYPE OF SERVICE: _____ | DATE: _____ |
| ENGINEER: _____ | SUBMITTED BY: _____ | DATE: _____ |
| CONTRACTOR: _____ | APPROVED BY: _____ | DATE: _____ |
| | ORDER NO.: _____ | DATE: _____ |

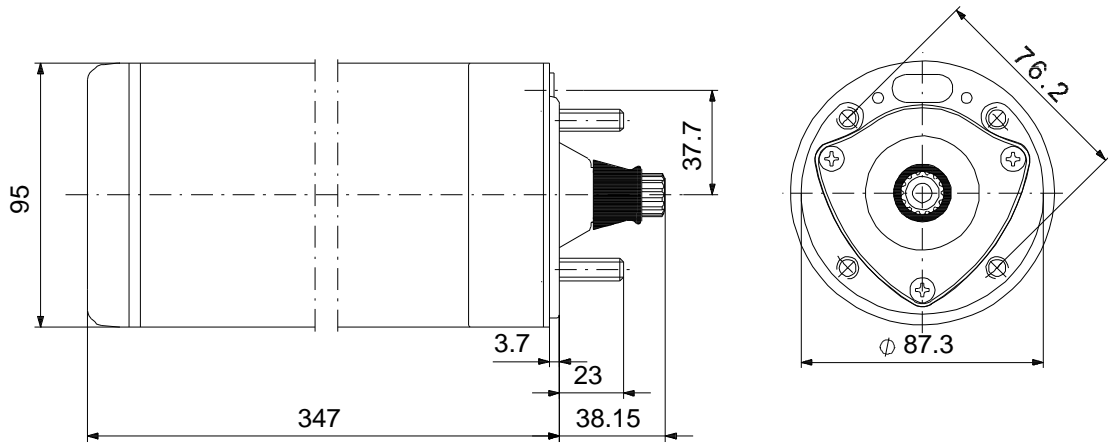


MS 402

Submersible motors

Note! Product picture may differ from actual product

| Conditions of Service | Pump Data | Motor Data |
|-------------------------|------------------------------|------------------------------|
| Flow: _____ | Approvals: CE,EAC,CSACOMP,UR | Rated power - P2: 0.75 kW |
| Head: _____ | Product number: 96465610 | Rated voltage: 230 V |
| Efficiency: _____ | | Mains frequency: 60 Hz |
| Liquid: _____ | | Enclosure class: IP68 |
| Temperature: _____ | | Insulation class: B |
| NPSH required: _____ | | Motor protection: CONTACT |
| Viscosity: _____ | | Thermal protection: internal |
| Specific Gravity: _____ | | Motor type: MS402 |



Materials:

Motor: Stainless steel
1.4301 EN
AISI 304

Tender Text



Note! Product picture may differ from actual product

Product No.: [96465610](#)

MS 402

The motor is a 1-phase motor of the canned type with sand shield, liquid-lubricated bearings and pressure equalizing diaphragm.

Technical:

Shaft seal for motor: LIPSEAL
Approvals on nameplate: CE,EAC,CSACOMP,UR
Motor version: T40

Materials:


Motor: Stainless steel
1.4301 EN
AISI 304

Installation:

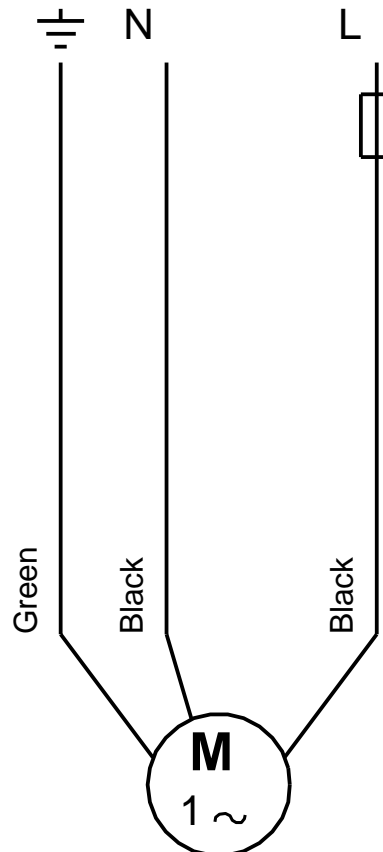
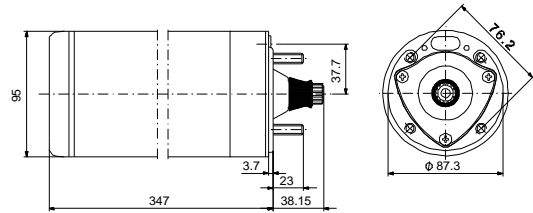
Maximum ambient pressure: 15 bar
Motor diameter: 4 inch

Electrical data:

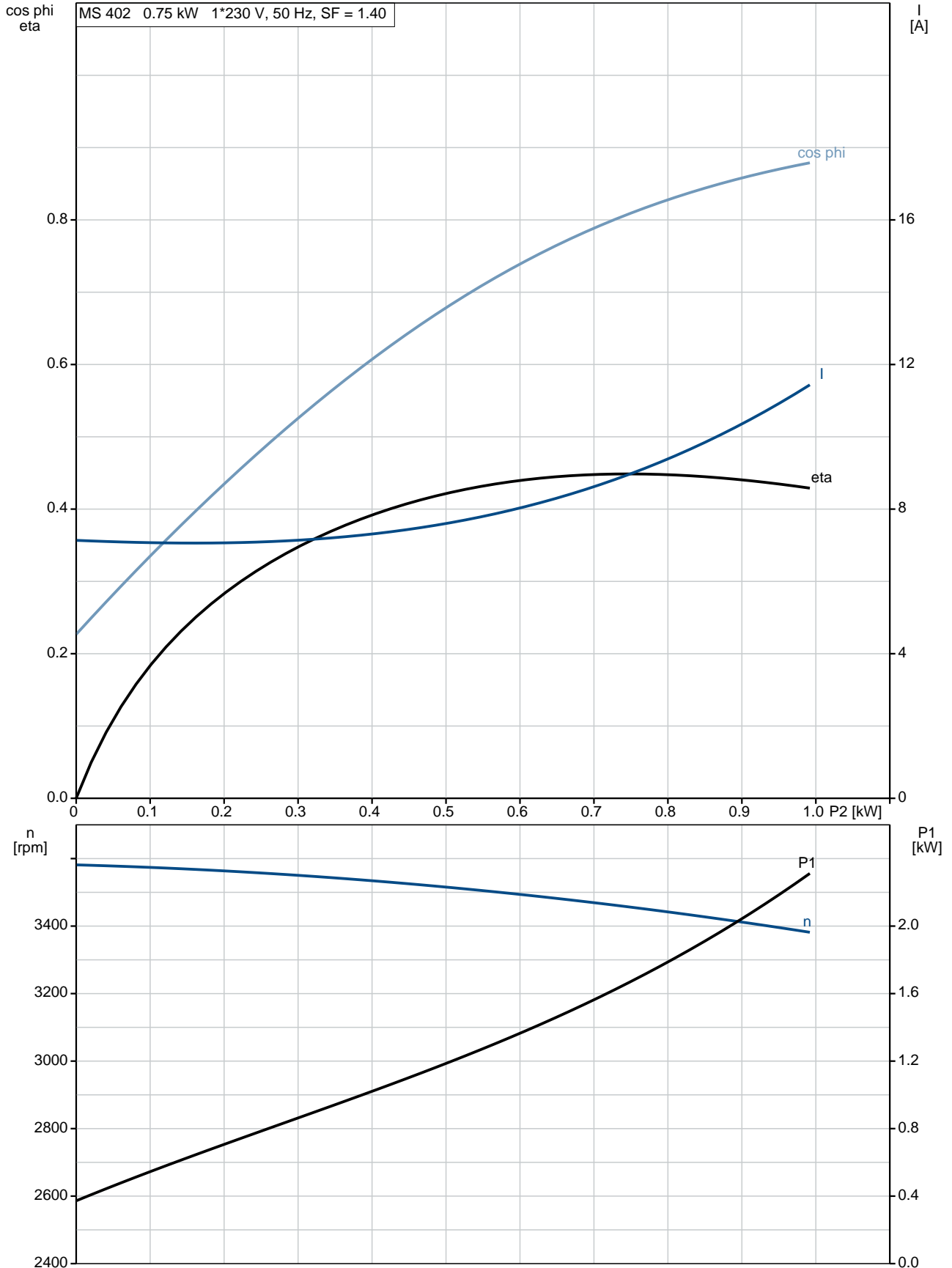
Motor type: MS402
Type of motor: CSIR
Rated power - P2: 0.75 kW
Mains frequency: 60 Hz
Rated voltage: 1 x 230 V
Voltage tolerance: +10/-10 %
Service factor: 1.40
Rated current: 9.8 A
Maximum current consumption: 9.8 A
Starting current: 430 %
Cos phi - power factor: 0.82
Rated speed: 3450 rpm
Rated full-load torque: 2.88 Nm
Locked-rotor torque: 160 %
Breakdown torque: 190 %
Moment of inertia: 0.0006 kg m²
Capacitor size - start: 120 µF/220 V
Start. method: direct-on-line
Enclosure class (IEC 34-5): IP68
Insulation class (IEC 85): B
Built-in temp. transmitter: no

| Position | Qty. | Description |
|----------|------|--|
| | 1 | <p>MS 402</p>  <p style="text-align: right;">Note! Product picture may differ from actual product</p> <p>Product No.: 96465610</p> <p>The motor is a 1-phase motor of the canned type with sand shield, liquid-lubricated bearings and pressure equalizing diaphragm.</p> <p>Technical:</p> <p>Shaft seal for motor: LIPSEAL Approvals on nameplate: CE,EAC,CSACOMP,UR Motor version: T40</p> <p>Materials:</p> <p>Motor: Stainless steel 1.4301 EN AISI 304</p> <p>Installation:</p> <p>Maximum ambient pressure: 15 bar Motor diameter: 4 inch</p> <p>Electrical data:</p> <p>Motor type: MS402 Type of motor: CSIR Rated power - P2: 0.75 kW Mains frequency: 60 Hz Rated voltage: 1 x 230 V Voltage tolerance: +10/-10 % Service factor: 1.40 Rated current: 9.8 A Maximum current consumption: 9.8 A Starting current: 430 % Cos phi - power factor: 0.82 Rated speed: 3450 rpm Rated full-load torque: 2.88 Nm Locked-rotor torque: 160 % Breakdown torque: 190 % Moment of inertia: 0.0006 kg m² Capacitor size - start: 120 µF/220 V Start. method: direct-on-line Enclosure class (IEC 34-5): IP68 Insulation class (IEC 85): B Built-in temp. transmitter: no</p> |

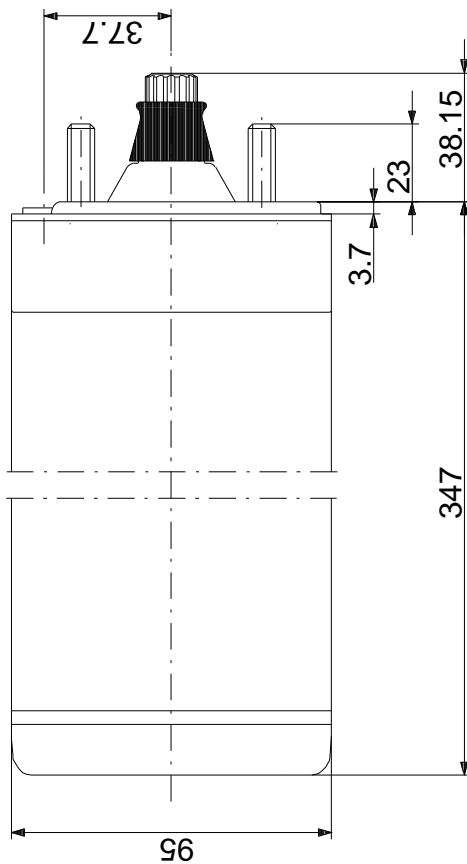
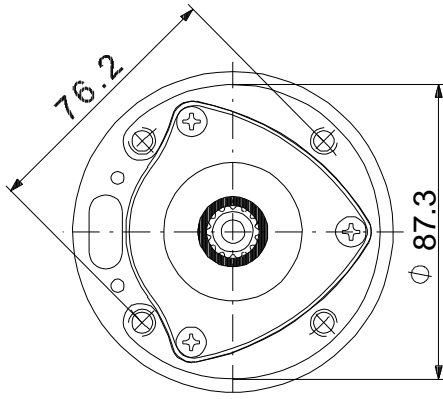
| Description | Value |
|------------------------------|--------------------------|
| General information: | |
| Product name: | MS 402 |
| Product No: | 96465610 |
| EAN number: | 5700394859363 |
| Technical: | |
| Shaft seal for motor: | LIPSEAL |
| Approvals on nameplate: | CE,EAC,CSACOMP,UR |
| Model: | B |
| Motor version: | T40 |
| Materials: | |
| Motor: | Stainless steel |
| | 1.4301 EN |
| | AISI 304 |
| Installation: | |
| Maximum ambient pressure: | 15 bar |
| Motor diameter: | 4 inch |
| Staybolt: | 5/16-24 UNF |
| Electrical data: | |
| Motor type: | MS402 |
| Type of motor: | CSIR |
| Rated power - P2: | 0.75 kW |
| KVA code: | K |
| Mains frequency: | 60 Hz |
| Rated voltage: | 1 x 230 V |
| Voltage tolerance: | +10/-10 % |
| Service factor: | 1.40 |
| Rated current: | 9.8 A |
| Maximum current consumption: | 9.8 A |
| Starting current: | 430 % |
| Cos phi - power factor: | 0.82 |
| Rated speed: | 3450 rpm |
| Rated full-load torque: | 2.88 Nm |
| Locked-rotor torque: | 160 % |
| Breakdown torque: | 190 % |
| Moment of inertia: | 0.0006 kg m ² |
| Axial load max: | 350 kg |
| Capacitor size - start: | 120 µF/220 V |
| Start. method: | direct-on-line |
| Enclosure class (IEC 34-5): | IP68 |
| Insulation class (IEC 85): | B |
| Motor protec: | CONTACT |
| Thermal protec: | internal |
| Built-in temp. transmitter: | no |
| R a: | 2.90 ohm |
| R s1: | 11.0 ohm |



96465610 MS 402 60 Hz

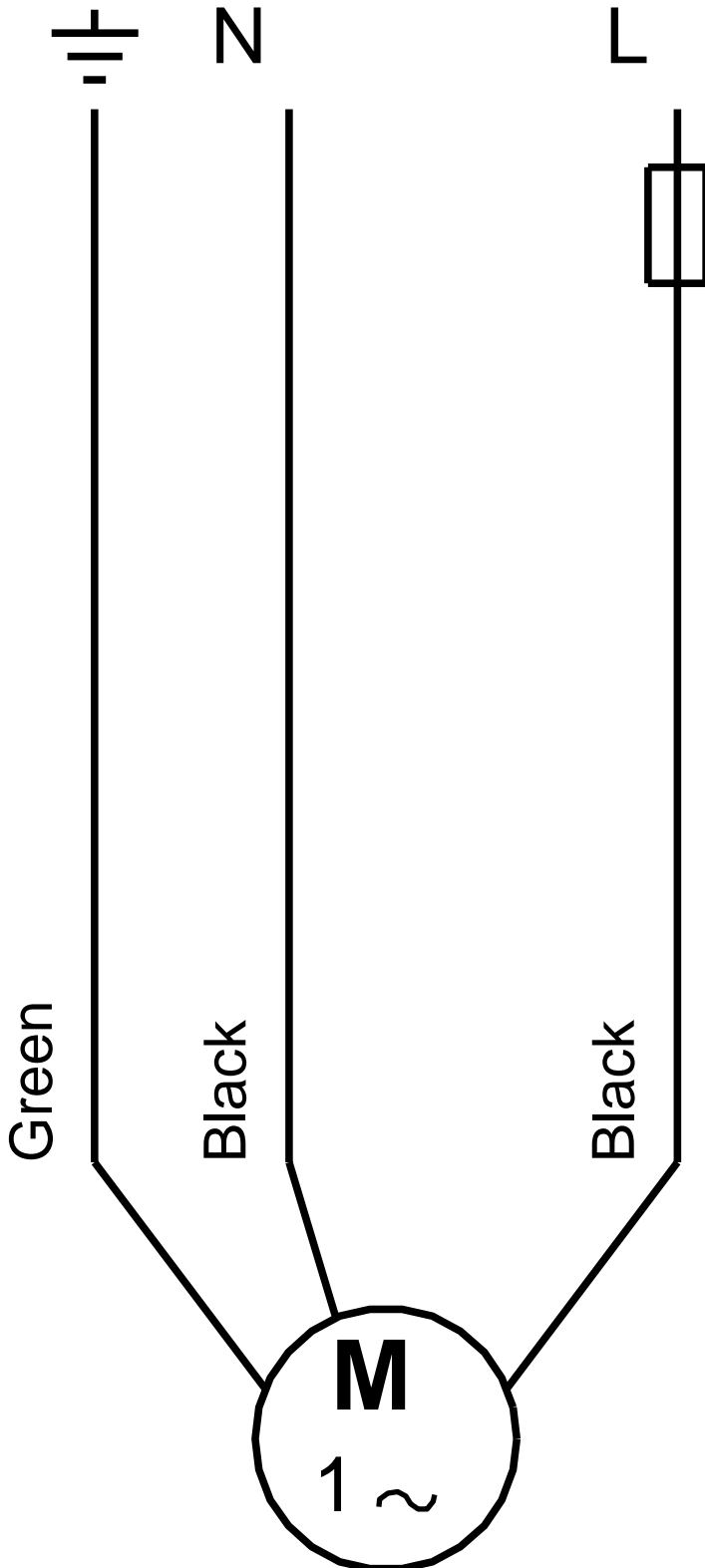


96465610 MS 402 60 Hz



Note! All units are in [mm] unless others are stated.
Disclaimer: This simplified dimensional drawing does not show all details.

96465610 MS 402 60 Hz



Note! All units are in [mm] unless others are stated.



Company name:

Created by:

Phone:

Date: 21/02/2018

Order Data:

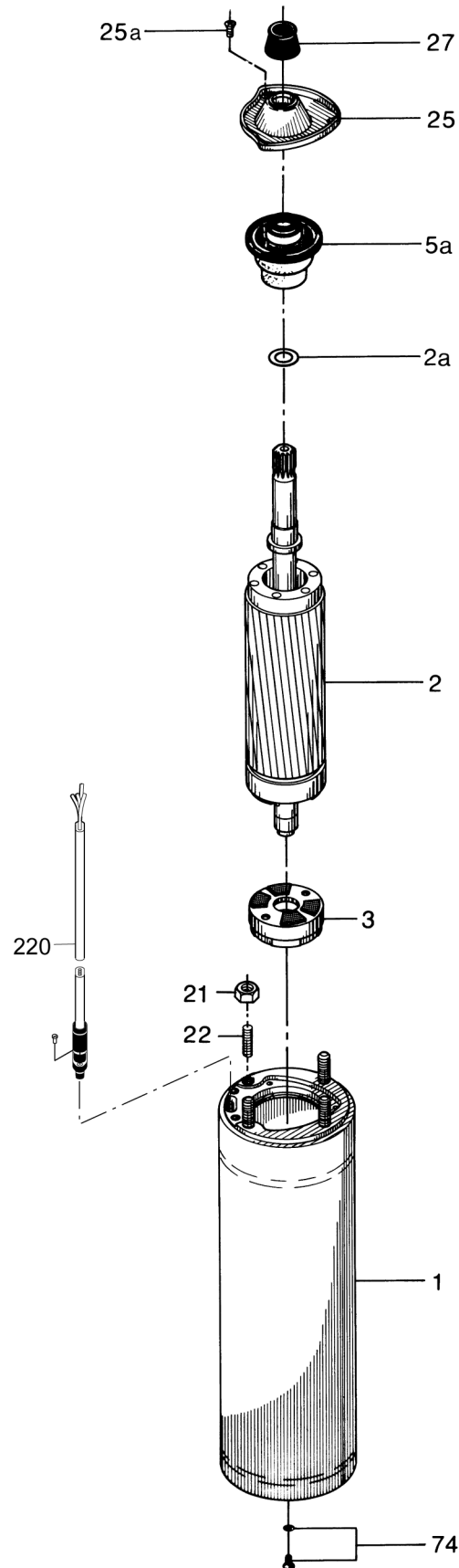
Product name: MS 402

Amount: 1

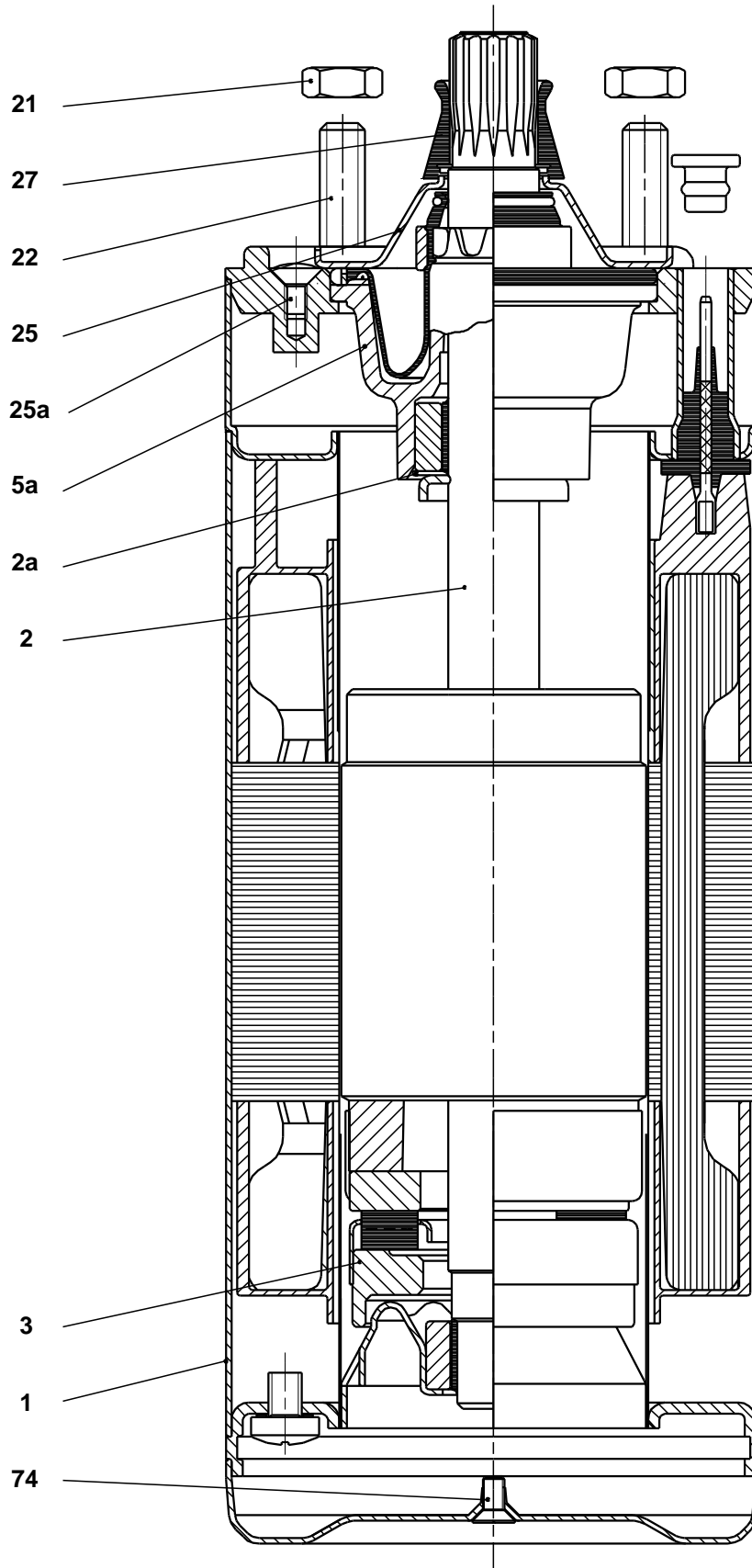
Product No: 96465610

Total: Price on request

Exploded view



Sectional drawing





Company name:

Created by:

Phone:

Date:

21/02/2018

Parts list MS 402, Product No. 96465610

Valid from 1.12.1994 (9448)

| Pos | Description | Annotation | Classification Data | Part no. | Qty. | Unit |
|-----|--------------------------------|------------|---------------------|----------|------|------|
| - | Motor | | | | 1 | pcs |
| | Stator cpl. | | | | 1 | |
| 2 | Shaft w/rotor | | | | 1 | |
| 2a | Lock ring | | | | 1 | |
| 3 | Thrust ring support cpl. | | | | 1 | |
| 5a | Radial bearing | | | | 1 | |
| 21 | Hex nut | | Thread: 5/16" | | 4 | |
| 22 | Staybolt | | | | 4 | |
| 25 | Cover plate | | | | 1 | |
| 25a | Cross recess countersunk screw | | | | 3 | |
| 27 | Sand shield | | | | 1 | |
| 74 | Socket countersunk screw | | | | 1 | |
| 20 | Motor cable | | Length (M): 1,25M | | 1 | pcs |