

PROJECT:	_____	UNIT TAG:	_____	QUANTITY:	_____
	_____	TYPE OF SERVICE:	_____		_____
REPRESENTATIVE:	_____	SUBMITTED BY:	_____	DATE:	_____
ENGINEER:	_____	APPROVED BY:	_____	DATE:	_____
CONTRACTOR:	_____	ORDER NO.:	_____	DATE:	_____

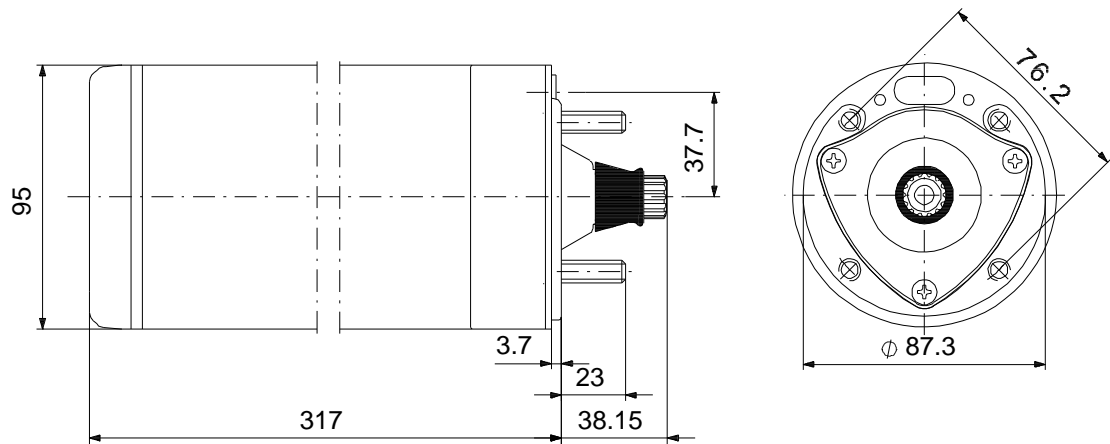


MS 402

Submersible motors

Note! Product picture may differ from actual product

Conditions of Service	Pump Data	Motor Data
Flow: _____	Approvals: CE,EAC,CSACOMP	Rated power - P2: 0.75 kW
Head: _____	Product number: 96465650	Rated voltage: 460 V
Efficiency: _____		Mains frequency: 60 Hz
Liquid: _____		Enclosure class: IP68
Temperature: _____		Insulation class: B
NPSH required: _____		Motor protection: NONE
Viscosity: _____		Thermal protection: external
Specific Gravity: _____		Motor type: MS402



**Materials:**

Motor: Stainless steel  
1.4301 EN  
AISI 304

## Tender Text



Note! Product picture may differ from actual product

Product No.: [96465650](#)

### MS 402

The motor is a 3-phase motor of the canned type with sand shield, liquid-lubricated bearings and pressure equalizing diaphragm.

#### Technical:

Shaft seal for motor:	LIPSEAL
Approvals on nameplate:	CE,EAC,CSACOMP
Motor version:	T40

#### Materials:


Motor:	Stainless steel
	1.4301 EN
	AISI 304

#### Installation:

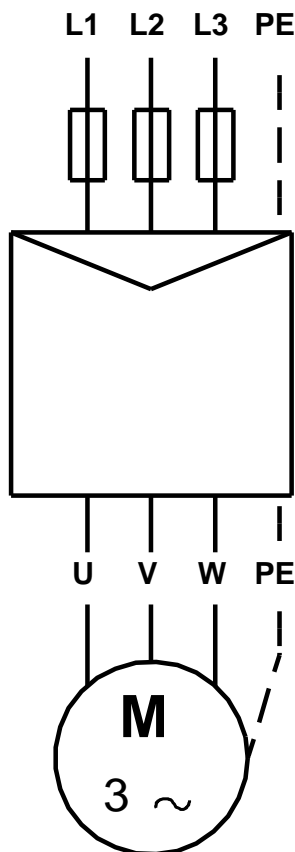
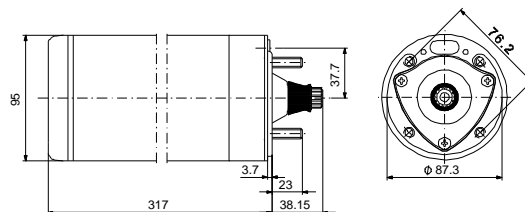
Maximum ambient pressure:	15 bar
Motor diameter:	4 inch

#### Electrical data:

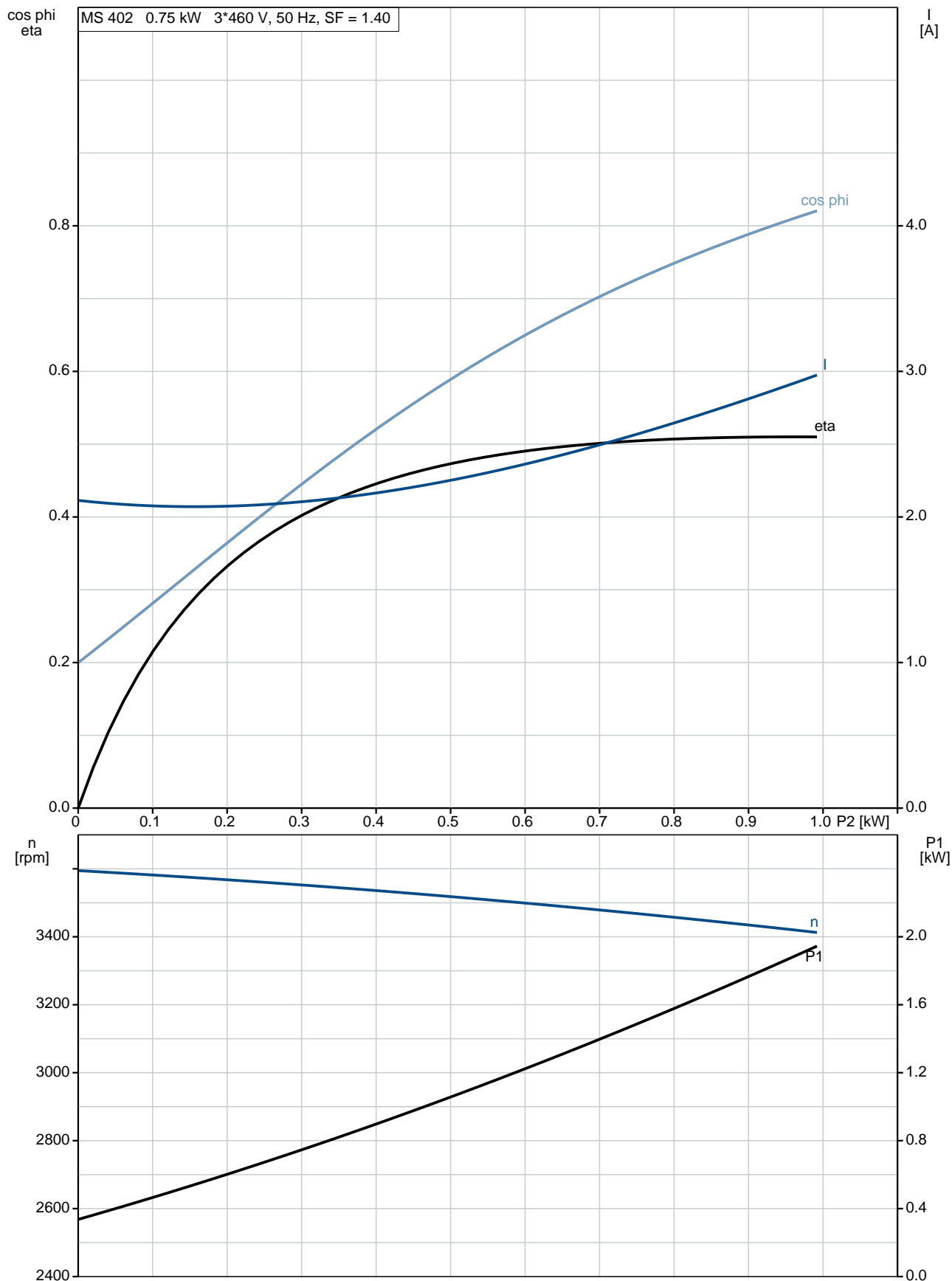
Motor type:	MS402
Rated power - P2:	0.75 kW
Mains frequency:	60 Hz
Rated voltage:	3 x 460 V
Voltage tolerance:	+10/-10 %
Service factor:	1.40
Rated current:	2.7 A
Maximum current consumption:	2.7 A
Starting current:	480 %
Cos phi - power factor:	0.73
Rated speed:	3450 rpm
Locked-rotor torque:	220 %
Moment of inertia:	0.0005 kg m <sup>2</sup>
Start. method:	direct-on-line
Enclosure class (IEC 34-5):	IP68
Insulation class (IEC 85):	B
Built-in temp. transmitter:	no
Winding resistance:	19.0 ohm

Position	Qty.	Description
	1	<p><b>MS 402</b></p>  <p><b>Note! Product picture may differ from actual product</b></p> <p>Product No.: <a href="#">96465650</a></p> <p>The motor is a 3-phase motor of the canned type with sand shield, liquid-lubricated bearings and pressure equalizing diaphragm.</p> <p><b>Technical:</b></p> <p>Shaft seal for motor: LIPSEAL          Approvals on nameplate: CE,EAC,CSACOMP          Motor version: T40</p> <p><b>Materials:</b></p> <p>Motor: Stainless steel          1.4301 EN          AISI 304</p> <p><b>Installation:</b></p> <p>Maximum ambient pressure: 15 bar          Motor diameter: 4 inch</p> <p><b>Electrical data:</b></p> <p>Motor type: MS402          Rated power - P2: 0.75 kW          Mains frequency: 60 Hz          Rated voltage: 3 x 460 V          Voltage tolerance: +10/-10 %          Service factor: 1.40          Rated current: 2.7 A          Maximum current consumption: 2.7 A          Starting current: 480 %          Cos phi - power factor: 0.73          Rated speed: 3450 rpm          Locked-rotor torque: 220 %          Moment of inertia: 0.0005 kg m²          Start. method: direct-on-line          Enclosure class (IEC 34-5): IP68          Insulation class (IEC 85): B          Built-in temp. transmitter: no          Winding resistance: 19.0 ohm</p>

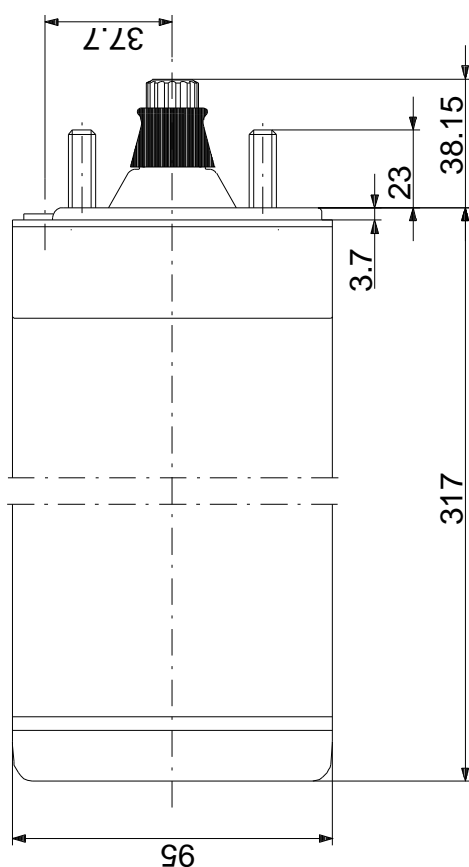
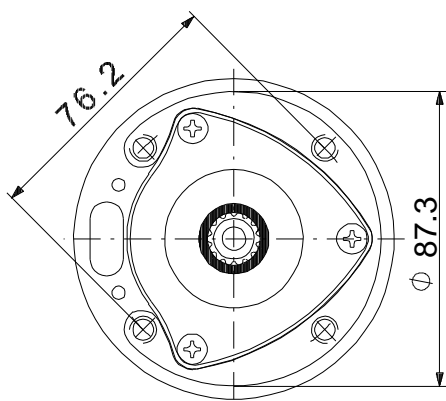
Description	Value
<b>General information:</b>	
Product name:	MS 402
Product No:	96465650
EAN number:	5700394859707
<b>Technical:</b>	
Shaft seal for motor:	LIPSEAL
Approvals on nameplate:	CE,EAC,CSACOMP
Model:	B
Motor version:	T40
<b>Materials:</b>	
Motor:	Stainless steel
	1.4301 EN
	AISI 304
<b>Installation:</b>	
Maximum ambient pressure:	15 bar
Motor diameter:	4 inch
Staybolt:	5/16-24 UNF
<b>Electrical data:</b>	
Motor type:	MS402
Rated power - P2:	0.75 kW
KVA code:	M
Mains frequency:	60 Hz
Rated voltage:	3 x 460 V
Voltage tolerance:	+10/-10 %
Service factor:	1.40
Rated current:	2.7 A
Maximum current consumption:	2.7 A
Starting current:	480 %
Cos phi - power factor:	0.73
Rated speed:	3450 rpm
Locked-rotor torque:	220 %
Moment of inertia:	0.0005 kg m <sup>2</sup>
Axial load max:	350 kg
Start. method:	direct-on-line
Enclosure class (IEC 34-5):	IP68
Insulation class (IEC 85):	B
Motor protec:	NONE
Thermal protec:	external
Built-in temp. transmitter:	no
Winding resistance:	19.0 ohm



## 96465650 MS 402 60 Hz

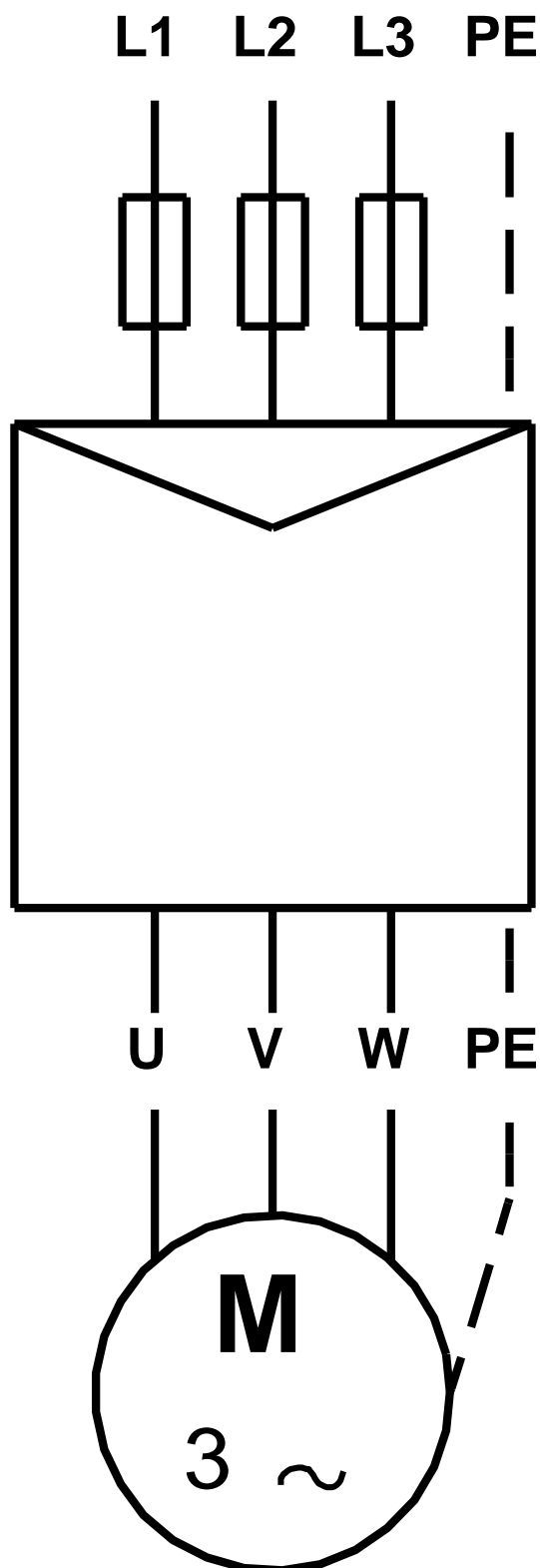


## 96465650 MS 402 60 Hz



Note! All units are in [mm] unless others are stated.  
Disclaimer: This simplified dimensional drawing does not show all details.

**96465650 MS 402 60 Hz**



Note! All units are in [mm] unless others are stated.





Company name:

Created by:

Phone:

Date:

20/02/2018

---

**Order Data:**

Product name: MS 402

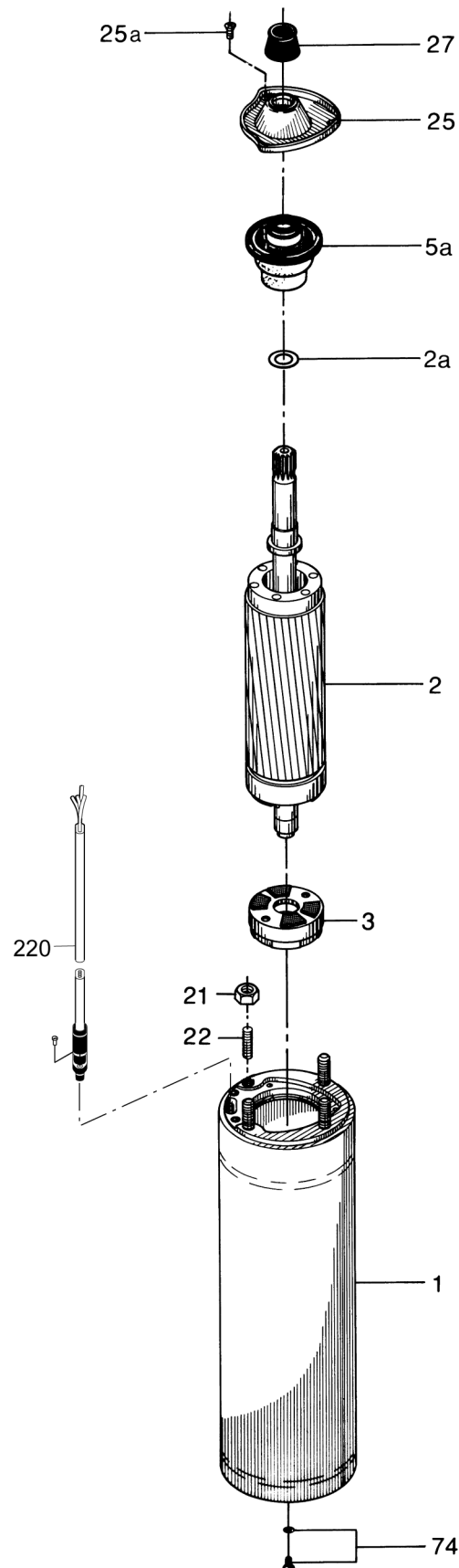
Amount: 1

Product No: 96465650

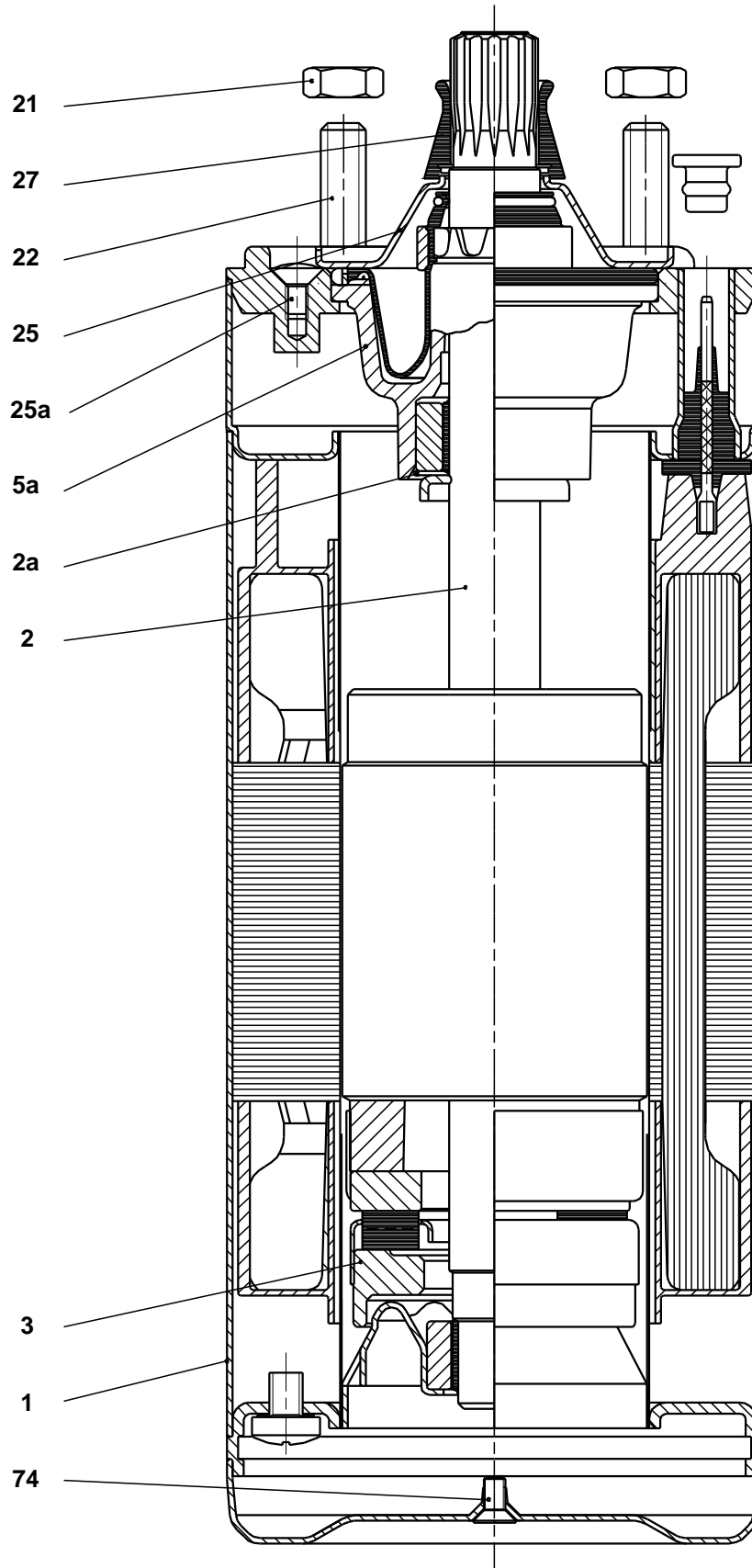
Total: Price on request

---

## Exploded view



## Sectional drawing





Company name:

Created by:

Phone:

Date:

20/02/2018

**Parts list MS 402, Product No. 96465650**

**Valid from 1.12.1994 (9448)**

Pos	Description	Annotation	Classification Data	Part no.	Qty.	Unit
-	Motor				1	pcs
1	Stator cpl.				1	
2	Shaft w/rotor				1	
2a	Lock ring				1	
3	Thrust ring support cpl.				1	
5a	Radial bearing				1	
21	Hex nut		Thread: 5/16"		4	
22	Staybolt				4	
25	Cover plate				1	
25a	Cross recess countersunk screw				3	
27	Sand shield				1	
74	Socket countersunk screw				1	
20	Motor cable		Length (M): 1,25M		1	pcs