

PROJECT: _____	UNIT TAG: _____	QUANTITY: _____
REPRESENTATIVE: _____	TYPE OF SERVICE: _____	DATE: _____
ENGINEER: _____	SUBMITTED BY: _____	DATE: _____
CONTRACTOR: _____	APPROVED BY: _____	DATE: _____
	ORDER NO.: _____	DATE: _____

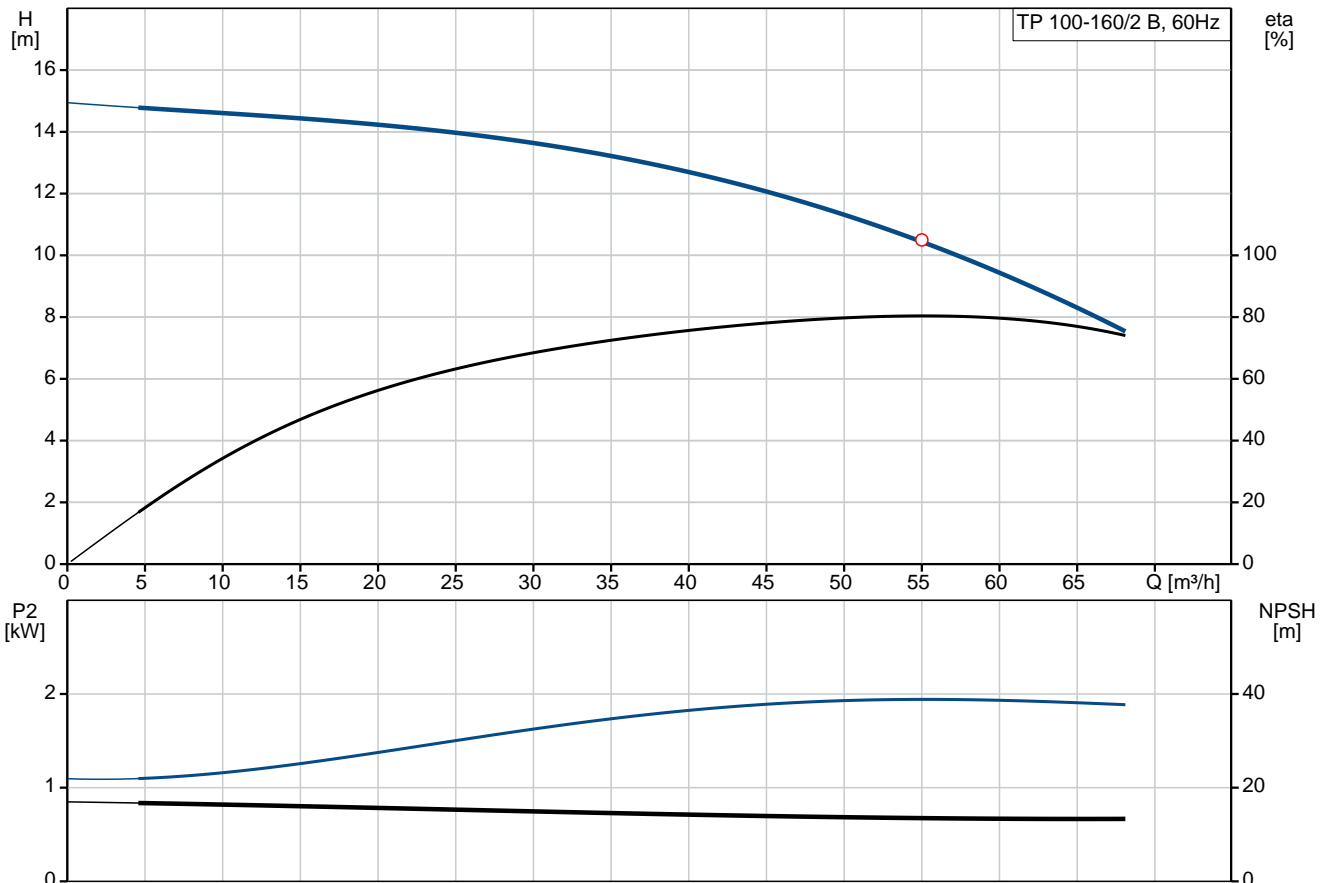


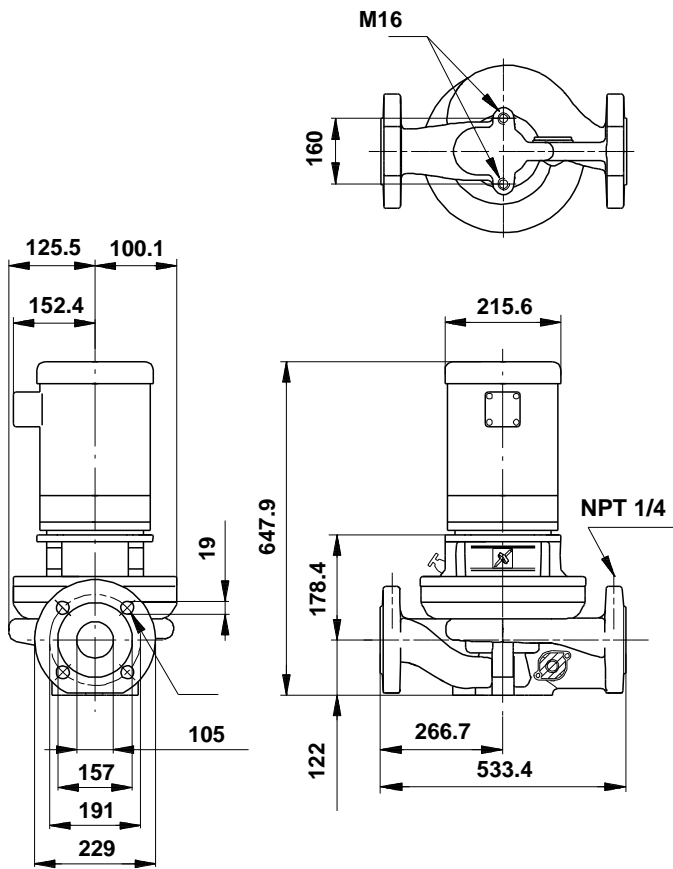
TP 100-160/2 B

Single-stage in-line pumps

Note! Product picture may differ from actual product

Conditions of Service	Pump Data	Motor Data
Flow: _____	Maximum operating pressure: 10 bar	Rated power - P2: 2.2 kW
Head: _____	Liquid temperature range: -15 .. 140 °C	Rated voltage: 115/208-230 V
Efficiency: _____	Maximum ambient temperature: 40 °C	Mains frequency: 60 Hz
Liquid: Water	Approvals motor: UL Recognized Component, CSA	Number of poles: 2
Temperature: 20 °C	Shaft seal: BUBE	Insulation class: F
NPSH required: m	Flange standard: ANSI	Motor protection: NONE
Viscosity: _____	Pipe connection: 4"	Motor type: Baldor, TEFC
Specific Gravity: 1.000	Product number: 96411852	Motor_efficiency: 75 %





Materials:

Pump housing: Bronze
 DIN W.-Nr. 2.1093

Impeller: Stainless steel
 DIN W.-Nr. 1.4301
 AISI 304

Material code: Z

Tender Text



Product No.: [96411852](#)

TP 100-160/2 B A-G-Z-BUBE

Single-stage centrifugal volute in-line single-head pump:

- neck rings and impeller made of stainless steel
- cataphoresis treatment
- shell coupling
- top-pull-out principle for easy maintenance
- optimized hydraulics
- in-line design with opposite suction and discharge ports enabling mounting in pipework or on a concrete foundation
- corrosion resistant maintenance-free mechanical shaft seal.

The motor is a 1-phase AC motor.

Liquid:

Pumped liquid: Water
Liquid temperature range: -15 .. 140 °C
Liquid temperature during operation: 20 °C
Density: 998.2 kg/m³

Technical:

Speed for pump data: 3470 rpm
Rated flow: 55 m³/h
Rated head: 10.5 m
Primary shaft seal: BUBE
Approvals on motor nameplate: UL Recognized Component, CSA
Curve tolerance: ISO9906:2012 3B

Materials:

Pump housing: Bronze
DIN W.-Nr. 2.1093
Impeller: Stainless steel
DIN W.-Nr. 1.4301
AISI 304

Installation:

Maximum ambient temperature: 40 °C
Maximum operating pressure: 10 bar
Flange standard: ANSI
Pipe connection: 4"
Pressure rating: 125 Lb.

Electrical data:

Motor type: Baldor, TEFC
Rated power - P2: 2.2 kW
Mains frequency: 60 Hz
Rated voltage: 1 x 115/208-230 V



Company name:

Created by:


Phone:

Date: 21/02/2018

Service factor: 1,15
Rated current: 29/16-14,5 A
Starting current: 170/93,5-85 A
Cos phi - power factor: 88
Rated speed: 3450 rpm
Motor efficiency at full load: 75 %
Number of poles: 2
Insulation class (IEC 85): F

Others:

Net weight: 88.4 kg
Gross weight: 88 kg
Shipping volume: 0.141 m³

Position	Qty.	Description
	1	<p>TP 100-160/2 B A-G-Z-BUBE</p>  <p>Product No.: 96411852</p> <p>Single-stage centrifugal volute in-line single-head pump:</p> <ul style="list-style-type: none"> - neck rings and impeller made of stainless steel - cataphoresis treatment - shell coupling - top-pull-out principle for easy maintenance - optimized hydraulics - in-line design with opposite suction and discharge ports enabling mounting in pipework or on a concrete foundation - corrosion resistant maintenance-free mechanical shaft seal. <p>The motor is a 1-phase AC motor.</p> <p>Liquid: Pumped liquid: Water Liquid temperature range: -15 .. 140 °C Liquid temperature during operation: 20 °C Density: 998.2 kg/m³</p> <p>Technical: Speed for pump data: 3470 rpm Rated flow: 55 m³/h Rated head: 10.5 m Primary shaft seal: BUBE Approvals on motor nameplate: UL Recognized Component, CSA Curve tolerance: ISO9906:2012 3B</p> <p>Materials: Pump housing: Bronze DIN W.-Nr. 2.1093 Impeller: Stainless steel DIN W.-Nr. 1.4301 AISI 304</p> <p>Installation: Maximum ambient temperature: 40 °C Maximum operating pressure: 10 bar Flange standard: ANSI Pipe connection: 4" Pressure rating: 125 Lb.</p> <p>Electrical data: Motor type: Baldor, TEFC Rated power - P2: 2.2 kW Mains frequency: 60 Hz Rated voltage: 1 x 115/208-230 V Service factor: 1,15</p>



Company name:

Created by:

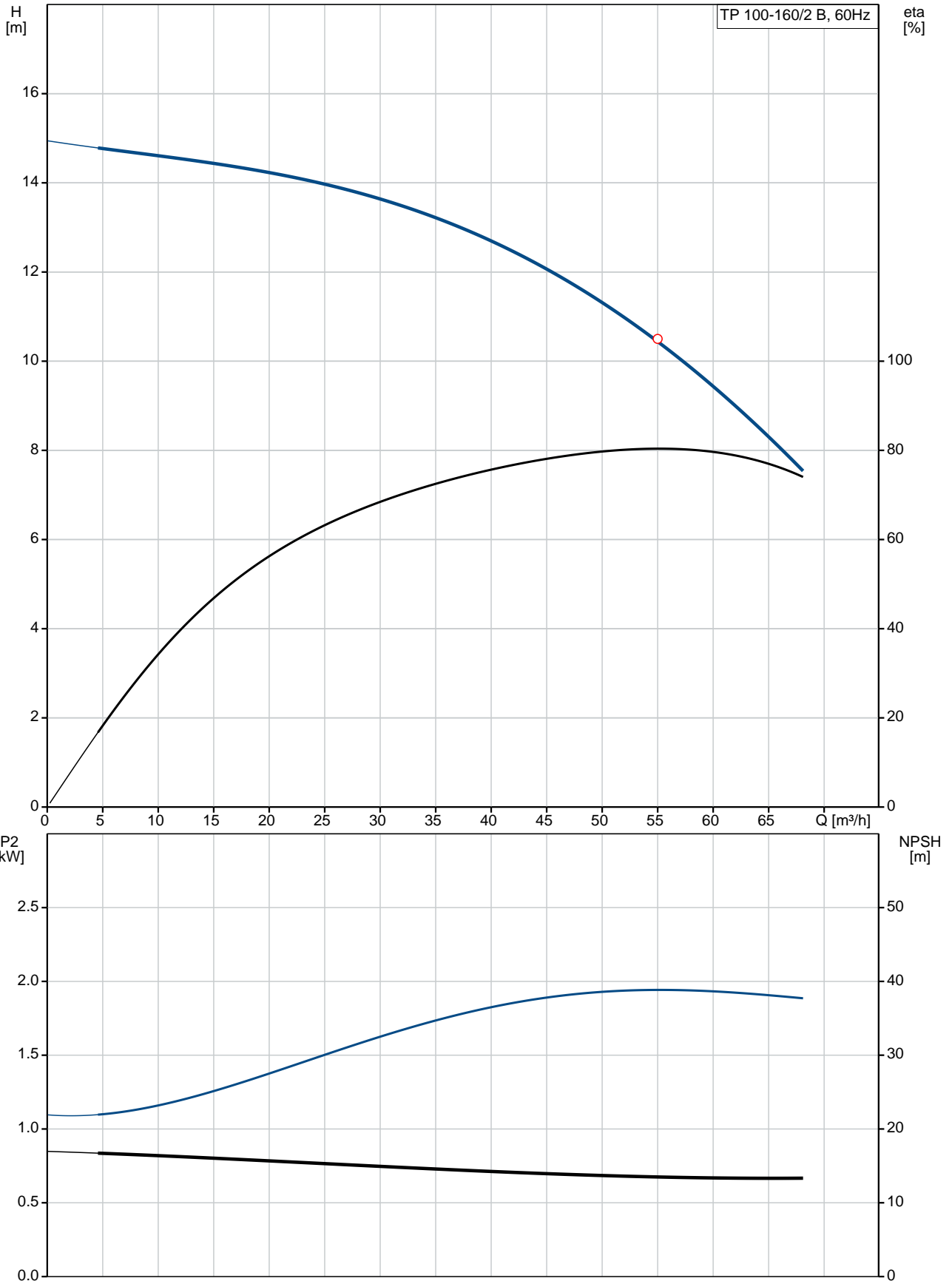
Phone:

Date:

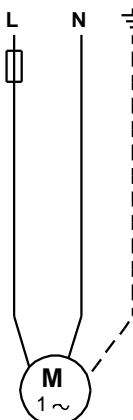
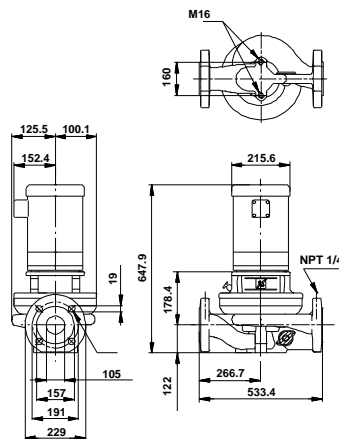
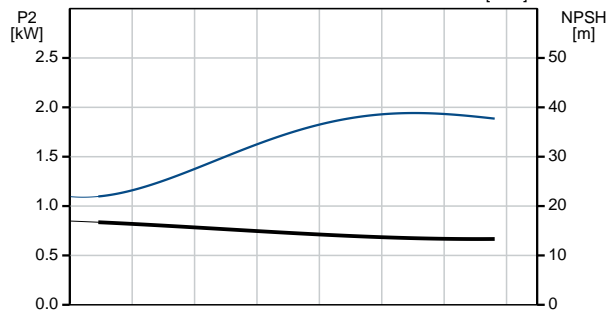
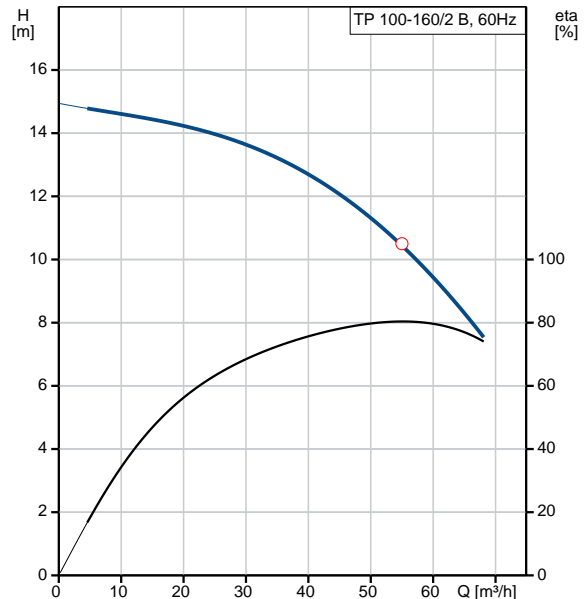
21/02/2018

Position	Qty.	Description
		Rated current: 29/16-14,5 A Starting current: 170/93,5-85 A Cos phi - power factor: 88 Rated speed: 3450 rpm Motor efficiency at full load: 75 % Number of poles: 2 Insulation class (IEC 85): F Others: Net weight: 88.4 kg Gross weight: 88 kg Shipping volume: 0.141 m ³

96411852 TP 100-160/2 B 60 Hz



Description	Value
General information:	
Product name:	TP 100-160/2 B A-G-Z-BUBE
Product No:	96411852
EAN number:	5700390526207
Technical:	
Speed for pump data:	3470 rpm
Rated flow:	55 m ³ /h
Rated head:	10.5 m
Head max:	160 dm
Primary shaft seal:	BUBE
Approvals on motor nameplate:	UL Recognized Component, CSA
Curve tolerance:	ISO9906:2012 3B
Pump No:	96405362
Pump version:	A
Materials:	
Pump housing:	Bronze DIN W.-Nr. 2.1093
Impeller:	Stainless steel DIN W.-Nr. 1.4301 AISI 304
Material code:	Z
Installation:	
Maximum ambient temperature:	40 °C
Maximum operating pressure:	10 bar
Flange standard:	ANSI
Connect code:	G
Pipe connection:	4"
Pressure rating:	125 Lb.
Liquid:	
Pumped liquid:	Water
Liquid temperature range:	-15 .. 140 °C
Liquid temperature during operation:	20 °C
Density:	998.2 kg/m ³
Electrical data:	
Motor type:	Baldor, TEFC
Rated power - P2:	2.2 kW
KVA code:	H
Mains frequency:	60 Hz
Rated voltage:	1 x 115/208-230 V
Service factor:	1,15
Rated current:	29/16-14,5 A
Starting current:	170/93,5-85 A
Load current:	32,8/18-16,4 A
Cos phi - power factor:	88
Rated speed:	3450 rpm
Motor efficiency at full load:	75 %
Number of poles:	2
Insulation class (IEC 85):	F
Motor protec:	NONE
Motor No:	84Z04014
Others:	





Company name:

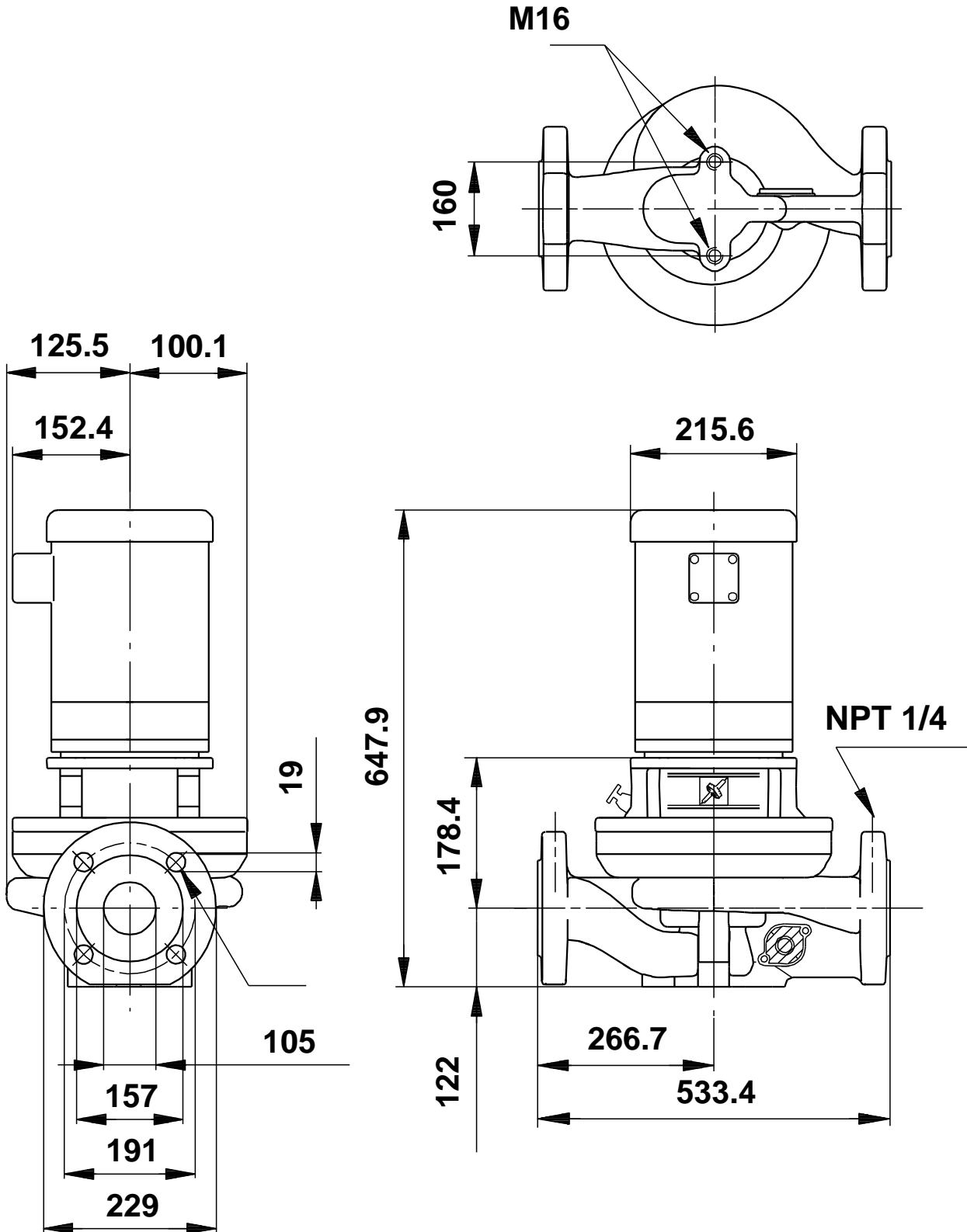
Created by:

Phone:

Date: 21/02/2018

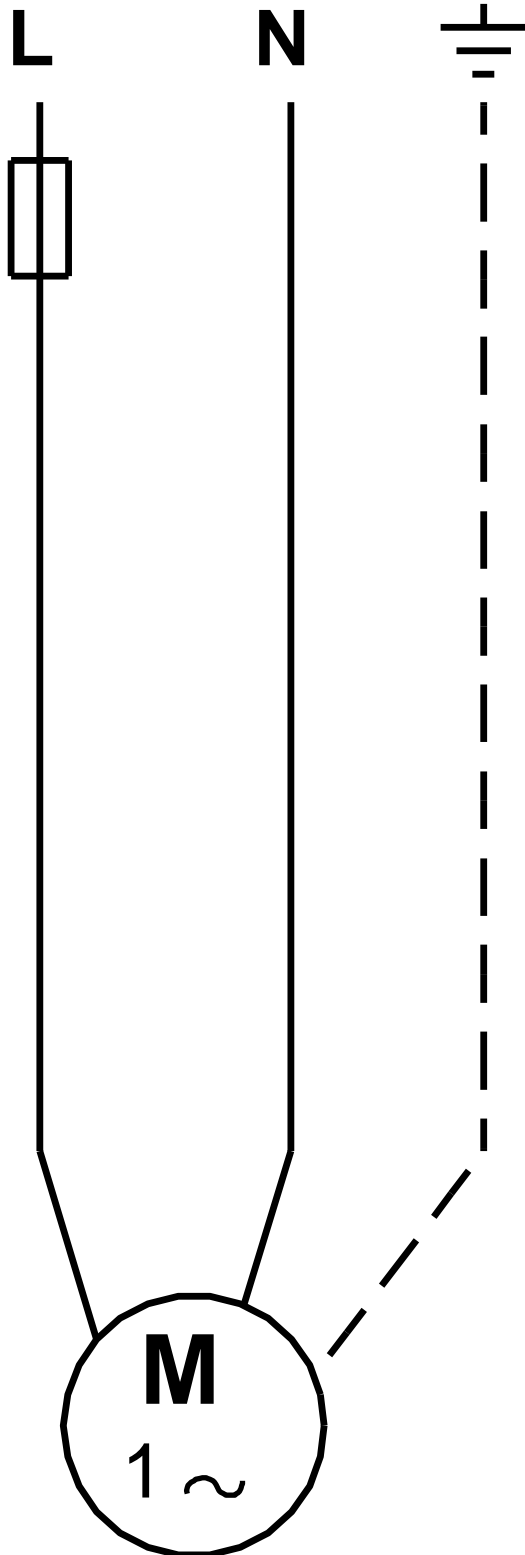
Description	Value
Net weight:	88.4 kg
Gross weight:	88 kg
Shipping volume:	0.141 m ³
Country code:	Namreg

96411852 TP 100-160/2 B 60 Hz



Note! All units are in [mm] unless others are stated.
Disclaimer: This simplified dimensional drawing does not show all details.

96411852 TP 100-160/2 B 60 Hz



Note! All units are in [mm] unless others are stated.



Company name:

Created by:

Phone:

Date: 21/02/2018

Order Data:

Product name: TP 100-160/2 B A-G-Z-BUBE

Amount: 1

Product No: 96411852

Total: Price on request

Parts list TP 100-160/2 B, Product No. 96411852

Valid from 8.11.2013 (1345)

Pos	Description	Annotation	Classification Data	Part no.	Qty.	Unit
-	Pump w/o motor				1	pcs
2	Motor stool				1	
6	Pump housing				1	
6	Pump housing				1	
7	Coupling guard				2	
7a	Pan head screw				4	
9	Hex socket head cap screw		Designation: DIN 912		4	
			Length (mm): 25			
			Thread: M8			
10	Shaft pin		Diameter: 5		1	
			Length (mm): 26			
10a	Coupling half				2	
17	Air vent screw				1	
19	Pipe plug				2	
26	Hex head screw		Length (mm): 28		8	
			Thread: M10			
49	Impeller				1	
49b	Split cone				1	
49b	Split cone nut				1	
72a	O-ring		Diameter: 154		1	
			Material type: EPDM			
			Thickness: 4			
76	Nameplate				1	
105	Shaft seal		Material type: EPDM		1	
	Motor				1	pcs