

PROJECT: _____	UNIT TAG: _____	QUANTITY: _____
REPRESENTATIVE: _____	TYPE OF SERVICE: _____	DATE: _____
ENGINEER: _____	SUBMITTED BY: _____	DATE: _____
CONTRACTOR: _____	APPROVED BY: _____	DATE: _____
	ORDER NO.: _____	DATE: _____

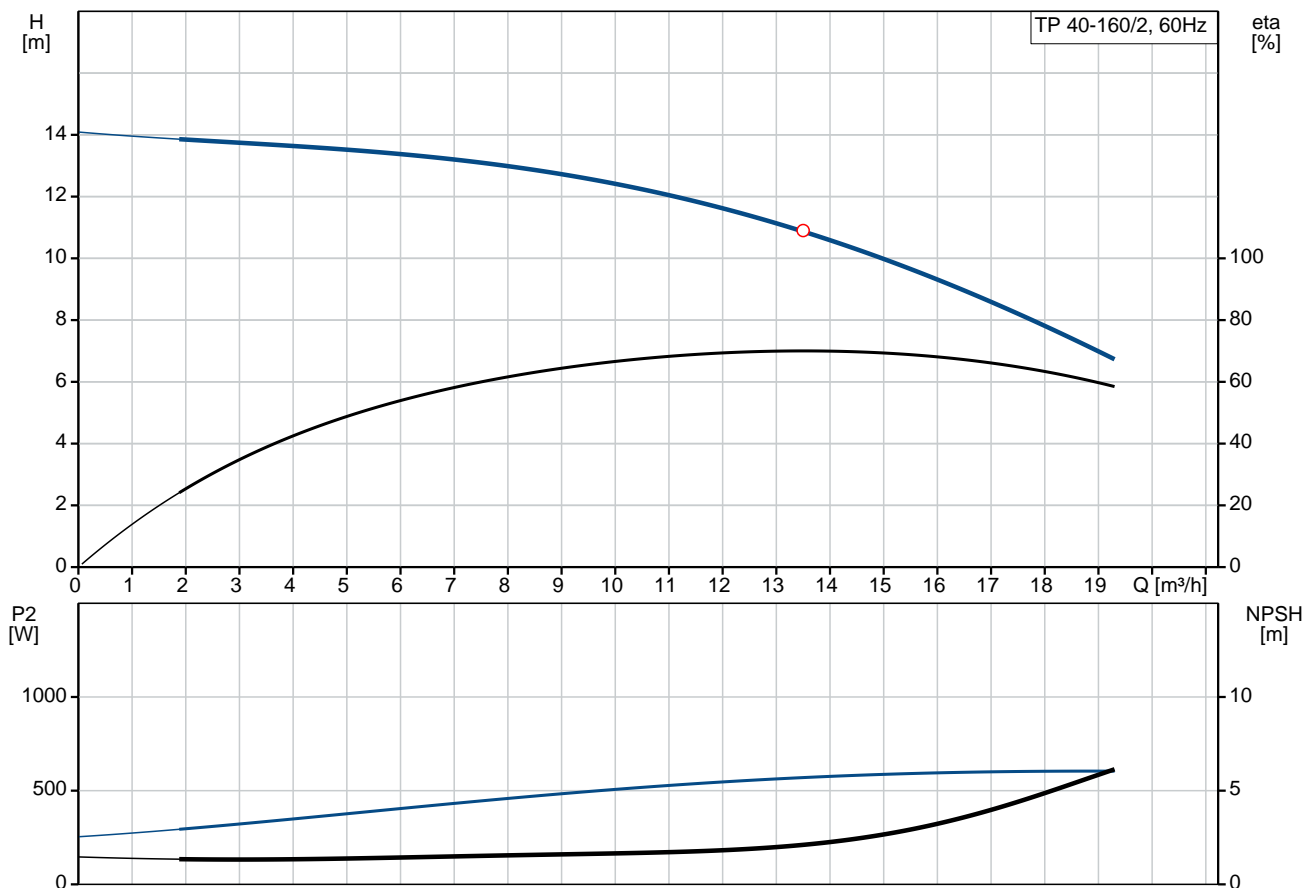


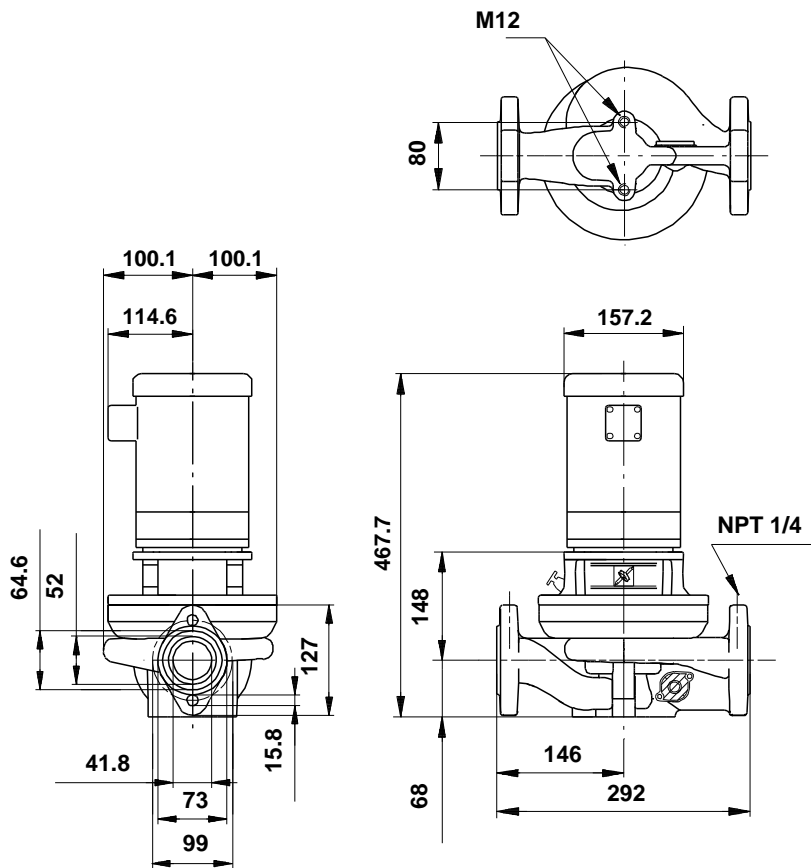
TP 40-160/2

Single-stage in-line pumps

Note! Product picture may differ from actual product

Conditions of Service	Pump Data	Motor Data
Flow: _____	Maximum operating pressure: 10 bar	Rated power - P2: 0.55 kW
Head: _____	Liquid temperature range: -15 .. 140 °C	Rated voltage: 115/208-230 V
Efficiency: _____	Maximum ambient temperature: 40 °C	Mains frequency: 60 Hz
Liquid: Water	Approvals motor: UL Recognized Component, CSA	Number of poles: 2
Temperature: 20 °C	Shaft seal: BUBE	Insulation class: B
NPSH required: m	Flange standard: USA	Motor protection: NONE
Viscosity: _____	Pipe connection: 1 1/2"	Motor type: Baldor, TEFC
Specific Gravity: 1.000	Product number: 96411798	Motor_efficiency: 66 %





Materials:

Pump housing: Cast iron
EN-JL1040
ASTM 25 B

Impeller: Stainless steel
DIN W.-Nr. 1.4301
AISI 304

Material code: A

Tender Text

Product No.: [96411798](#)**TP 40-160/2 A-G-A-BUBE**

Single-stage centrifugal volute in-line single-head pump:

- neck rings and impeller made of stainless steel
- cataphoresis treatment
- shell coupling
- top-pull-out principle for easy maintenance
- optimized hydraulics
- in-line design with opposite suction and discharge ports enabling mounting in pipework or on a concrete foundation
- corrosion resistant maintenance-free mechanical shaft seal.

The motor is a 1-phase AC motor.

Liquid:

Pumped liquid: Water
Liquid temperature range: -15 .. 140 °C
Liquid temperature during operation: 20 °C
Density: 998.2 kg/m³

Technical:

Speed for pump data: 3450 rpm
Rated flow: 13.5 m³/h
Rated head: 10.9 m
Primary shaft seal: BUBE
Approvals on motor nameplate: UL Recognized Component, CSA
Curve tolerance: ISO9906:2012 3B

Materials:

Pump housing: Cast iron
EN-JL1040
ASTM 25 B
Impeller: Stainless steel
DIN W.-Nr. 1.4301
AISI 304

Installation:

Maximum ambient temperature: 40 °C
Maximum operating pressure: 10 bar
Flange standard: USA
Pipe connection: 1 1/2"

Electrical data:

Motor type: Baldor, TEFC
Rated power - P2: 0.55 kW
Mains frequency: 60 Hz
Rated voltage: 1 x 115/208-230 V



Company name:

Created by:

Phone:


Date:

21/02/2018

Service factor: 1,25
Rated current: 9,6/5-4,8 A
Starting current: 56/31-28 A
Cos phi - power factor: 74
Rated speed: 3450 rpm
Motor efficiency at full load: 66 %
Number of poles: 2
Insulation class (IEC 85): B

Others:

Net weight: 29.8 kg
Gross weight: 27.2 kg
Shipping volume: 0.056 m³

Position	Qty.	Description
	1	<p>TP 40-160/2 A-G-A-BUBE</p>  <p>Product No.: 96411798</p> <p>Single-stage centrifugal volute in-line single-head pump:</p> <ul style="list-style-type: none"> - neck rings and impeller made of stainless steel - cataphoresis treatment - shell coupling - top-pull-out principle for easy maintenance - optimized hydraulics - in-line design with opposite suction and discharge ports enabling mounting in pipework or on a concrete foundation - corrosion resistant maintenance-free mechanical shaft seal. <p>The motor is a 1-phase AC motor.</p> <p>Liquid:</p> <p>Pumped liquid: Water</p> <p>Liquid temperature range: -15 .. 140 °C</p> <p>Liquid temperature during operation: 20 °C</p> <p>Density: 998.2 kg/m³</p> <p>Technical:</p> <p>Speed for pump data: 3450 rpm</p> <p>Rated flow: 13.5 m³/h</p> <p>Rated head: 10.9 m</p> <p>Primary shaft seal: BUBE</p> <p>Approvals on motor nameplate: UL Recognized Component, CSA</p> <p>Curve tolerance: ISO9906:2012 3B</p> <p>Materials:</p> <p>Pump housing: Cast iron EN-JL1040 ASTM 25 B</p> <p>Impeller: Stainless steel DIN W.-Nr. 1.4301 AISI 304</p> <p>Installation:</p> <p>Maximum ambient temperature: 40 °C</p> <p>Maximum operating pressure: 10 bar</p> <p>Flange standard: USA</p> <p>Pipe connection: 1 1/2"</p> <p>Electrical data:</p> <p>Motor type: Baldor, TEFC</p> <p>Rated power - P2: 0.55 kW</p> <p>Mains frequency: 60 Hz</p> <p>Rated voltage: 1 x 115/208-230 V</p> <p>Service factor: 1,25</p>



Company name:

Created by:

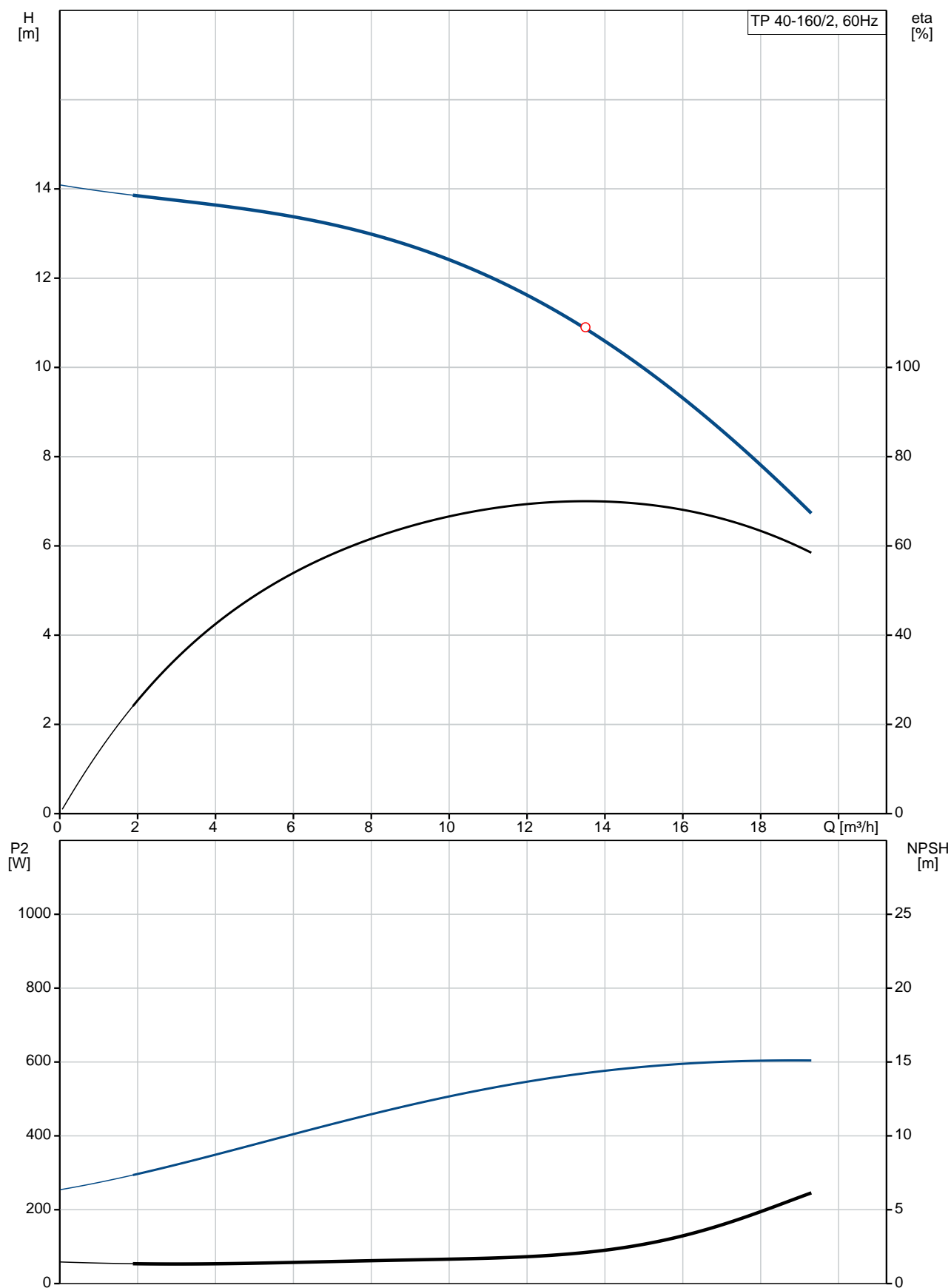
Phone:

Date:

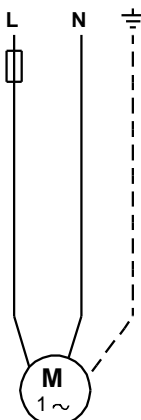
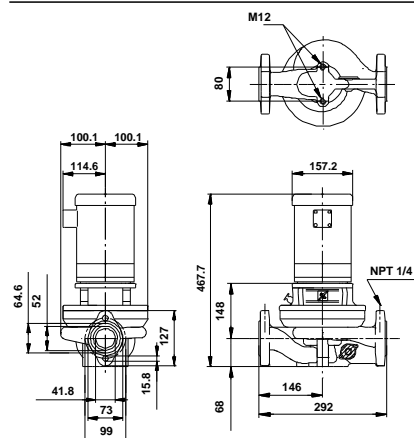
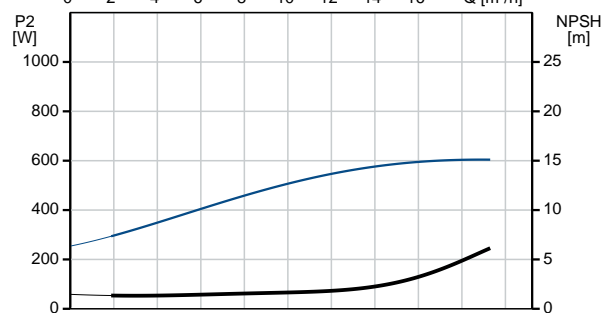
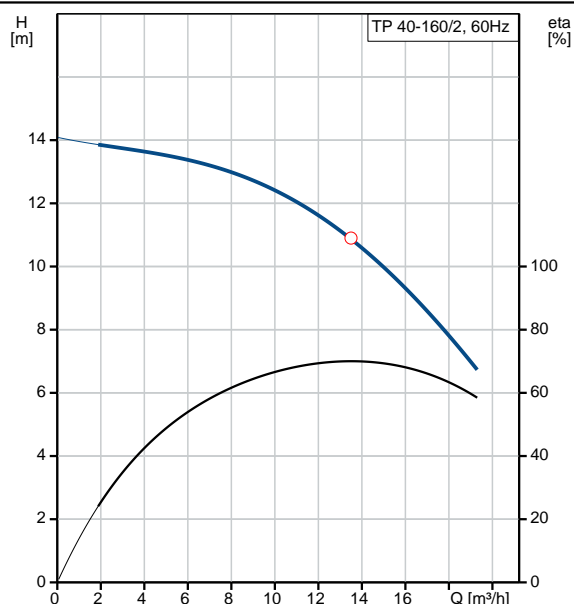
21/02/2018

Position	Qty.	Description
		<div>Rated current: 9,6/5-4,8 A</div> <div>Starting current: 56/31-28 A</div> <div>Cos phi - power factor: 74</div> <div>Rated speed: 3450 rpm</div> <div>Motor efficiency at full load: 66 %</div> <div>Number of poles: 2</div> <div>Insulation class (IEC 85): B</div> <div>Others:</div> <div>Net weight: 29.8 kg</div> <div>Gross weight: 27.2 kg</div> <div>Shipping volume: 0.056 m³</div>

96411798 TP 40-160/2 60 Hz



Description	Value
General information:	
Product name:	TP 40-160/2 A-G-A-BUBE
Product No:	96411798
EAN number:	5700390524173
Technical:	
Speed for pump data:	3450 rpm
Rated flow:	13.5 m³/h
Rated head:	10.9 m
Head max:	160 dm
Primary shaft seal:	BUBE
Approvals on motor nameplate:	UL Recognized Component, CSA
Curve tolerance:	ISO9906:2012 3B
Pump No:	96405257
Pump version:	A
Materials:	
Pump housing:	Cast iron
	EN-JL1040
	ASTM 25 B
Impeller:	Stainless steel
	DIN W.-Nr. 1.4301
	AISI 304
Material code:	A
Installation:	
Maximum ambient temperature:	40 °C
Maximum operating pressure:	10 bar
Flange standard:	USA
Connect code:	G
Pipe connection:	1 1/2"
Liquid:	
Pumped liquid:	Water
Liquid temperature range:	-15 .. 140 °C
Liquid temperature during operation:	20 °C
Density:	998.2 kg/m³
Electrical data:	
Motor type:	Baldor, TEFC
Rated power - P2:	0.55 kW
KVA code:	K
Mains frequency:	60 Hz
Rated voltage:	1 x 115/208-230 V
Service factor:	1,25
Rated current:	9,6/5-4,8 A
Starting current:	56/31-28 A
Load current:	11,4/6-5,7 A
Cos phi - power factor:	74
Rated speed:	3450 rpm
Motor efficiency at full load:	66 %
Number of poles:	2
Insulation class (IEC 85):	B
Motor protec:	NONE
Motor No:	84Z04001
Others:	
Net weight:	29.8 kg





Company name:

Created by:

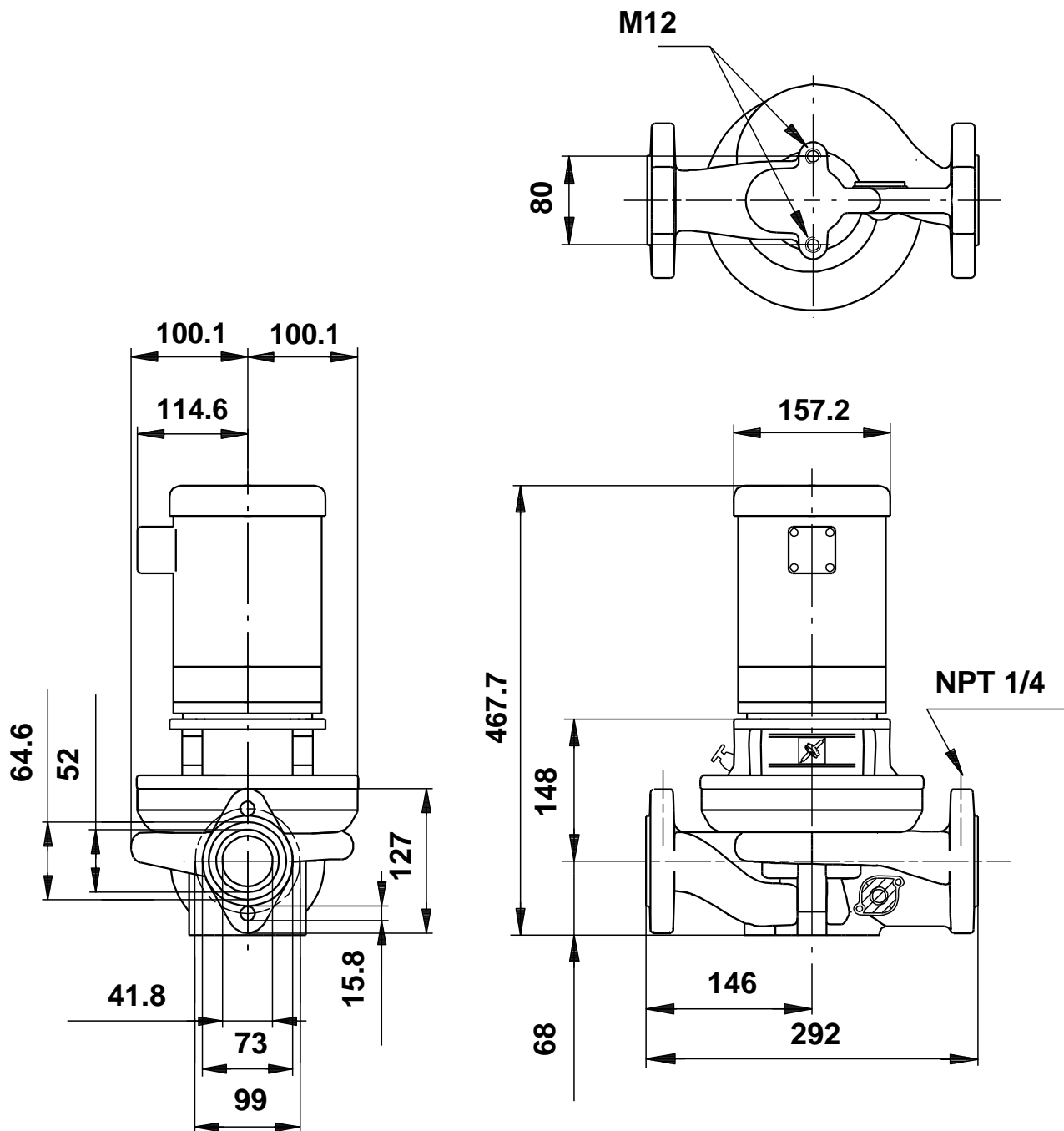
Phone:

Date:

21/02/2018

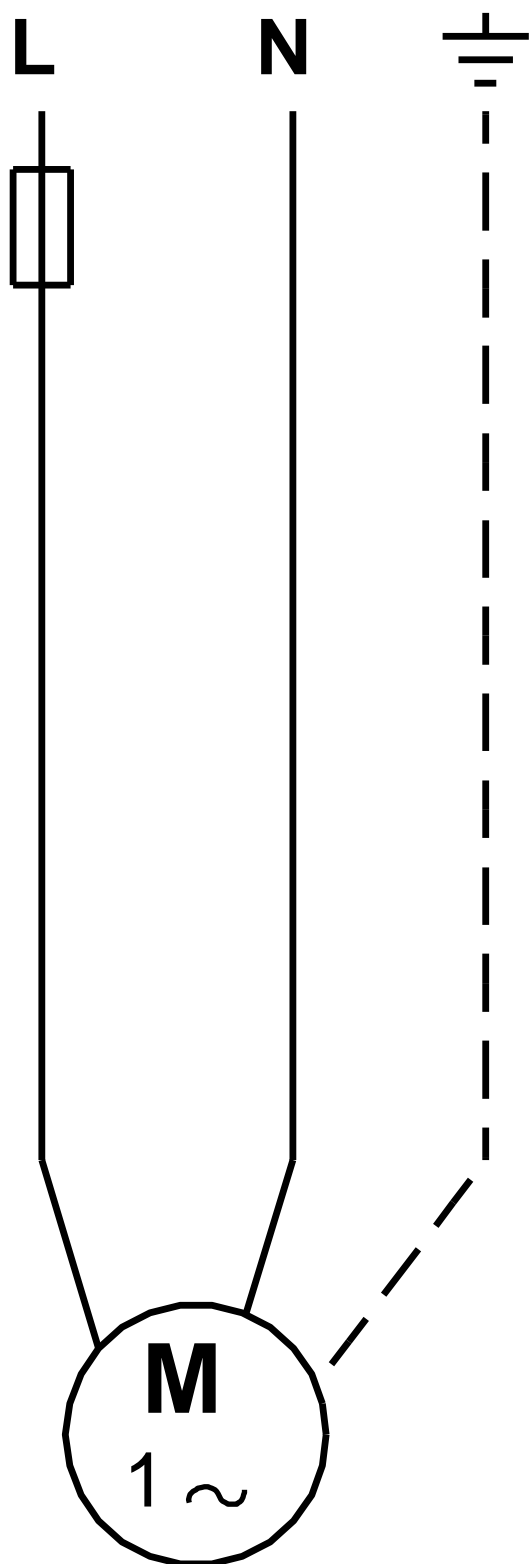
Description	Value
Gross weight:	27.2 kg
Shipping volume:	0.056 m ³
Country code:	Namreg

96411798 TP 40-160/2 60 Hz



Note! All units are in [mm] unless others are stated.
Disclaimer: This simplified dimensional drawing does not show all details.

96411798 TP 40-160/2 60 Hz



Note! All units are in [mm] unless others are stated.



Company name:

Created by:

Phone:

Date:

21/02/2018

Order Data:

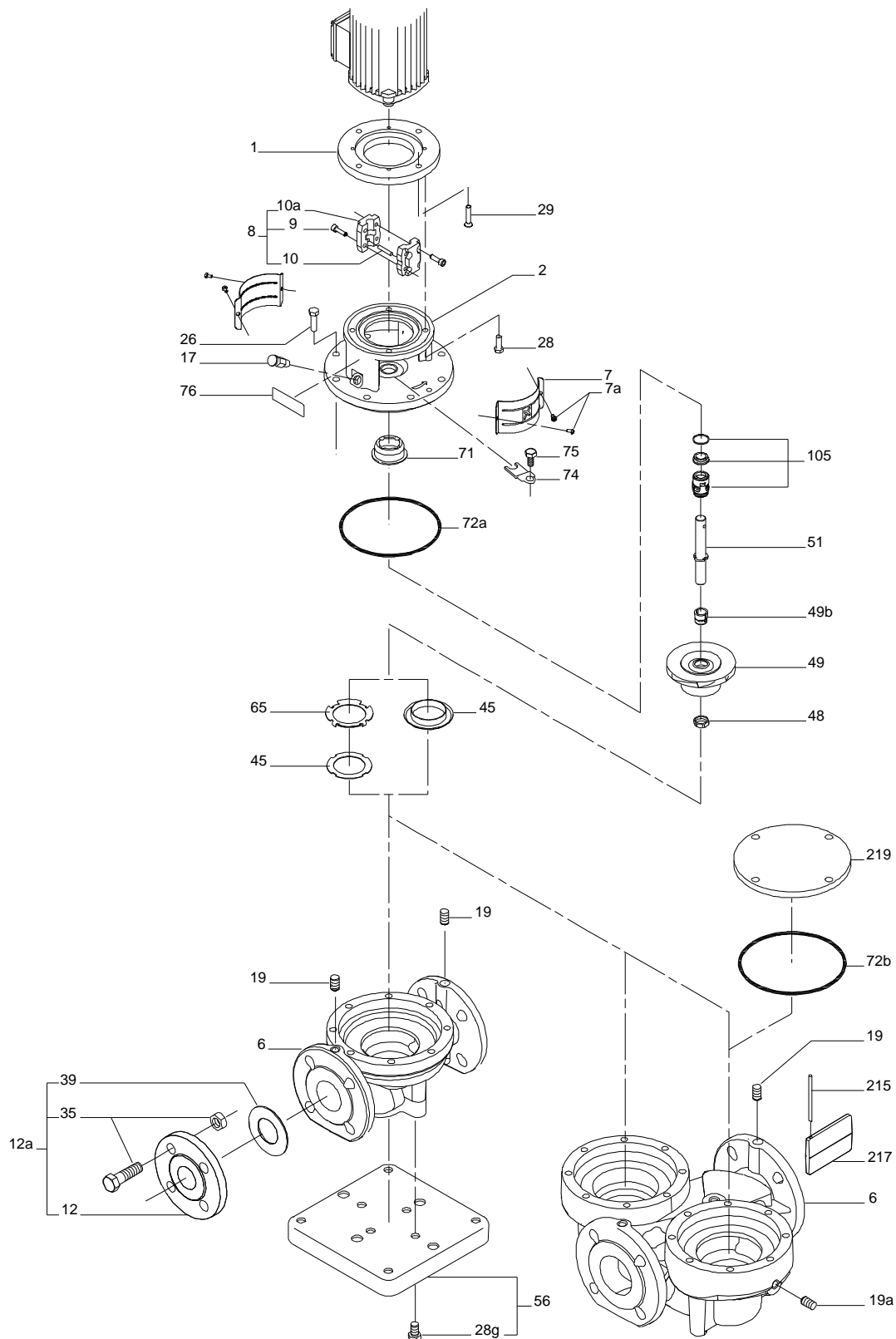
Product name: TP 40-160/2 A-G-A-BUBE

Amount: 1

Product No: 96411798

Total: Price on request

Exploded view (tm009281 2201)



TM009281

Parts list TP 40-160/2, Product No. 96411798

Valid from 8.11.2013 (1345)

Pos	Description	Annotation	Classification Data	Part no.	Qty.	Unit
	Motor				1	pcs
-	Pump				1	pcs
2	Motor stool				1	
6	Pump housing				1	
6	Pump housing				1	
7	Coupling guard				2	
7a	Pan head screw				4	
9	Hex socket head cap screw		Designation: DIN 912		4	
			Length (mm): 20			
			Thread: M6			
10	Shaft pin		Diameter: 5		1	
			Length (mm): 26			
10a	Coupling half				2	
17	Air vent screw				1	
19	Pipe plug				2	
26	Hex head screw		Length (mm): 28		4	
			Thread: M10			
45	Ring				1	
49	Impeller cpl.				1	
49b	Split cone				1	
49b	Split cone nut				1	
65	Neck ring				1	
72a	O-ring		Diameter: 154		1	
			Material type: EPDM			
			Thickness: 4			
76	Nameplate				1	
105	Shaft seal		Material type: EPDM		1	