

PROJECT: _____	UNIT TAG: _____	QUANTITY: _____
REPRESENTATIVE: _____	TYPE OF SERVICE: _____	DATE: _____
ENGINEER: _____	SUBMITTED BY: _____	DATE: _____
CONTRACTOR: _____	APPROVED BY: _____	DATE: _____
	ORDER NO.: _____	DATE: _____

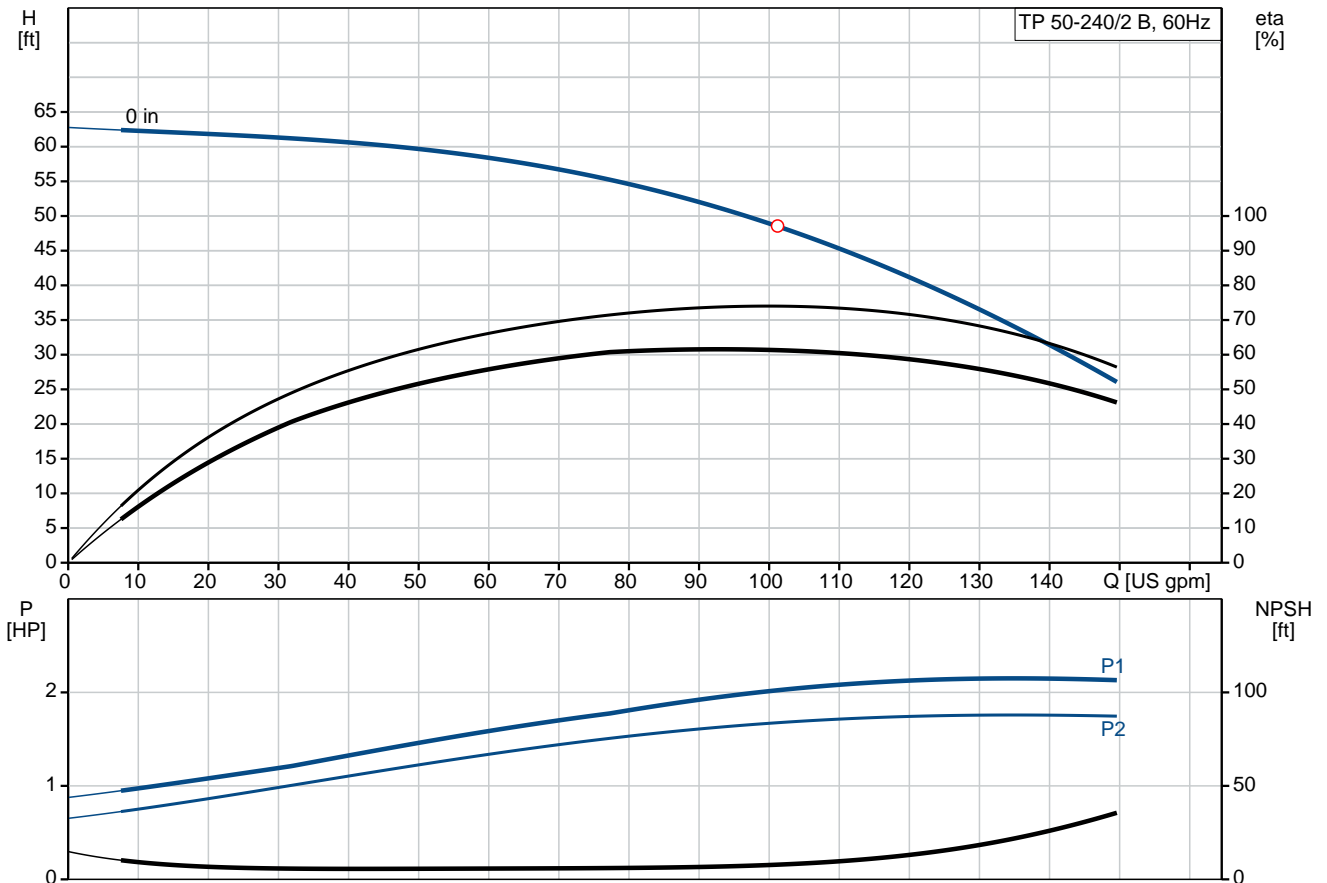


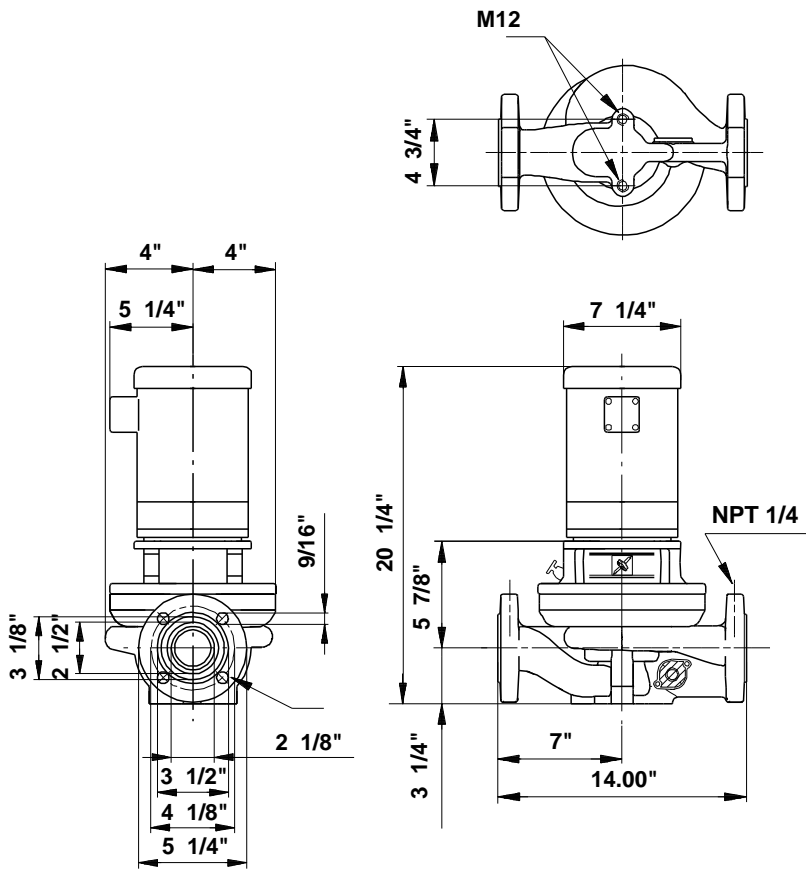
TP 50-240/2 B

Single-stage in-line pumps

Product photo could vary from the actual product

Conditions of Service	Pump Data	Motor Data
Flow: _____	Maximum operating pressure: 145 psi	Rated power - P2: 2 HP
Head: _____	Liquid temperature range: 5 .. 284 °F	Rated voltage: 208-230/460 V
Efficiency: _____	Maximum ambient temperature: 104 °F	Main frequency: 60 Hz
Liquid: Water	Approvals motor: UL Recognized Component, CSA	Number of poles: 2
Temperature: 68 °F	Shaft seal: BUBE	Insulation class: B
NPSH required: ft	Flange standard: USA	Motor protection: NONE
Viscosity: _____	Pipe connection: 2"	Motor type: Baldor, TEFC
Specific Gravity: 1.000	Product number: 96411821	Motor_efficiency: 78.5 %





Materials:

Pump housing: Bronze
 DIN W.-Nr. 2.1093

Impeller: Stainless steel
 DIN W.-Nr. 1.4301
 AISI 304

Material code: Z

Tender Text



Product No.: [96411821](#)

TP 50-240/2 B A-G-Z-BUBE

Single-stage centrifugal volute in-line single-head pump:

- neck rings and impeller made of stainless steel
- cataphoresis treatment
- shell coupling
- top-pull-out principle for easy maintenance
- optimized hydraulics
- in-line design with opposite suction and discharge ports enabling mounting in pipework or on a concrete foundation
- corrosion resistant maintenance-free mechanical shaft seal.

The motor is a 3-phase AC motor.

Liquid:

Pumped liquid: Water
Liquid temperature range: 5 .. 284 °F
Liquid temperature during operation: 68 °F
Density: 62.29 lb/ft³

Technical:

Speed for pump data: 3490 rpm
Rated flow: 101 US gpm
Rated head: 48.56 ft
Primary shaft seal: BUBE
Approvals on motor nameplate: UL Recognized Component, CSA
Curve tolerance: ISO9906:2012 3B

Materials:

Pump housing: Bronze
DIN W.-Nr. 2.1093
Impeller: Stainless steel
DIN W.-Nr. 1.4301
AISI 304

Installation:

Maximum ambient temperature: 104 °F
Maximum operating pressure: 145 psi
Flange standard: USA
Pipe connection: 2"

Electrical data:

Motor type: Baldor, TEFC
Rated power - P2: 2 HP
Main frequency: 60 Hz
Rated voltage: 3 x 208-230/460 V
Service factor: 1,15



Company name:

Created by:

Phone:


Date:

2/20/2018

Rated current: 5,7-5,4/2,7 A
Starting current: 38,7-35/17,5 A
Cos phi - power factor: 93
Rated speed: 3450 rpm
Motor efficiency at full load: 78.5 %
Motor efficiency at 3/4 load: 85.0 %
Motor efficiency at 1/2 load: 83.0 %
Number of poles: 2
Insulation class (IEC 85): B

Others:

Net weight: 87.3 lb
Gross weight: 91 lb
Shipping volume: 2.33 ft³

Position	Count	Description
	1	<p>TP 50-240/2 B A-G-Z-BUBE</p>  <p>Product No.: 96411821</p> <p>Single-stage centrifugal volute in-line single-head pump:</p> <ul style="list-style-type: none"> - neck rings and impeller made of stainless steel - cataphoresis treatment - shell coupling - top-pull-out principle for easy maintenance - optimized hydraulics - in-line design with opposite suction and discharge ports enabling mounting in pipework or on a concrete foundation - corrosion resistant maintenance-free mechanical shaft seal. <p>The motor is a 3-phase AC motor.</p> <p>Liquid:</p> <p>Pumped liquid: Water Liquid temperature range: 5 .. 284 °F Liquid temperature during operation: 68 °F Density: 62.29 lb/ft³</p> <p>Technical:</p> <p>Speed for pump data: 3490 rpm Rated flow: 101 US gpm Rated head: 48.56 ft Primary shaft seal: BUBE Approvals on motor nameplate: UL Recognized Component, CSA Curve tolerance: ISO9906:2012 3B</p> <p>Materials:</p> <p>Pump housing: Bronze DIN W.-Nr. 2.1093</p> <p>Impeller: Stainless steel DIN W.-Nr. 1.4301 AISI 304</p> <p>Installation:</p> <p>Maximum ambient temperature: 104 °F Maximum operating pressure: 145 psi Flange standard: USA Pipe connection: 2"</p> <p>Electrical data:</p> <p>Motor type: Baldor, TEFC Rated power - P2: 2 HP Main frequency: 60 Hz Rated voltage: 3 x 208-230/460 V Service factor: 1,15 Rated current: 5,7-5,4/2,7 A</p>



Company name:

Created by:

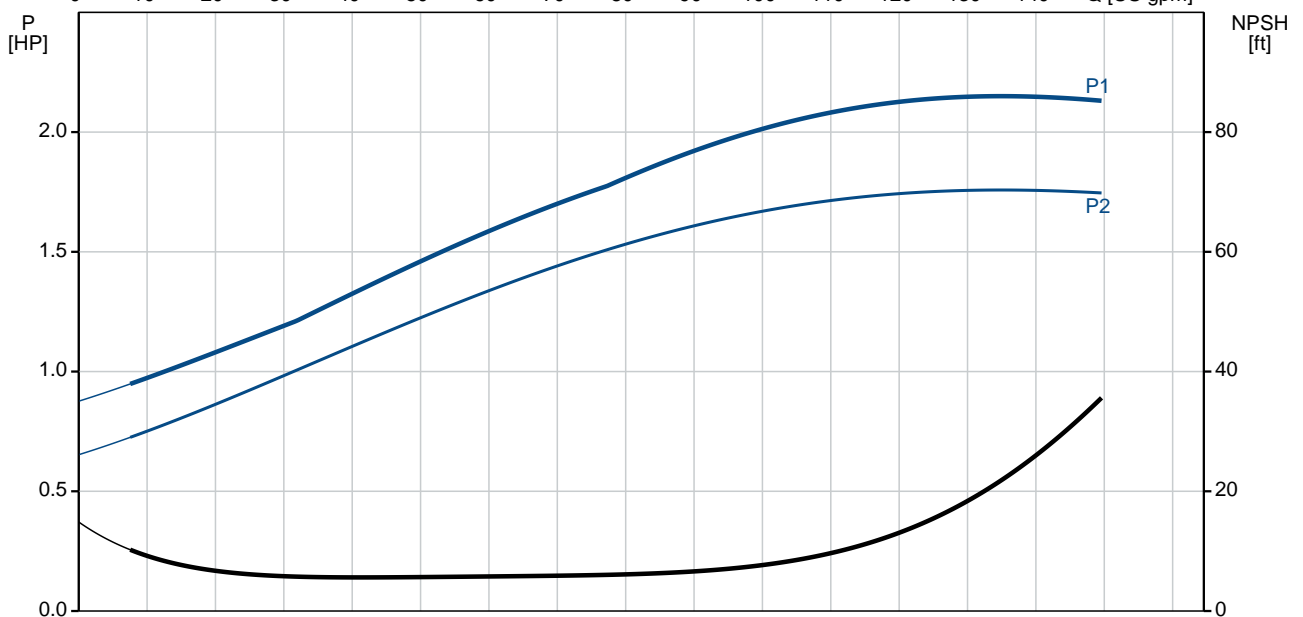
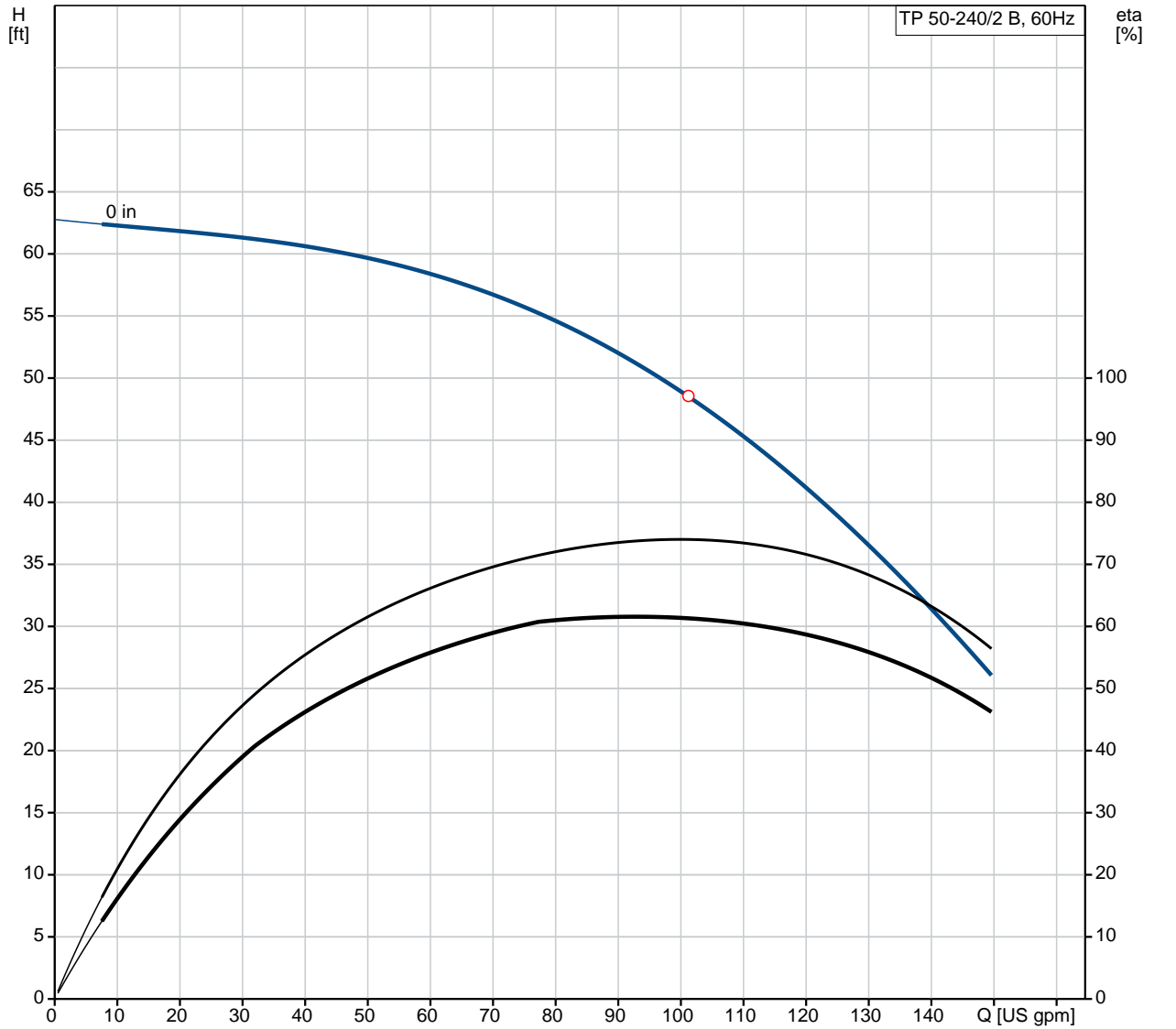
Phone:

Date:

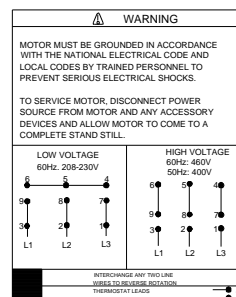
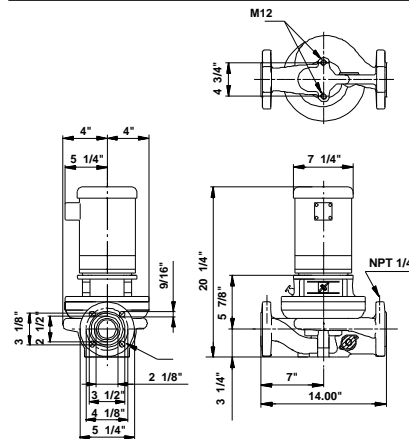
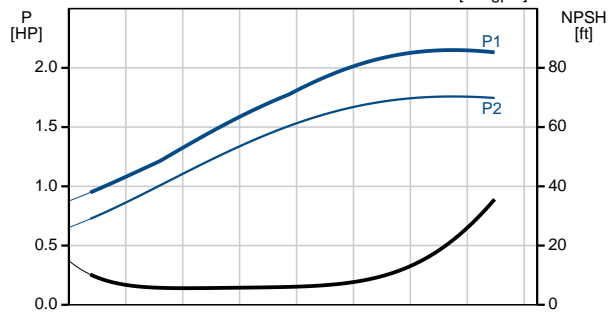
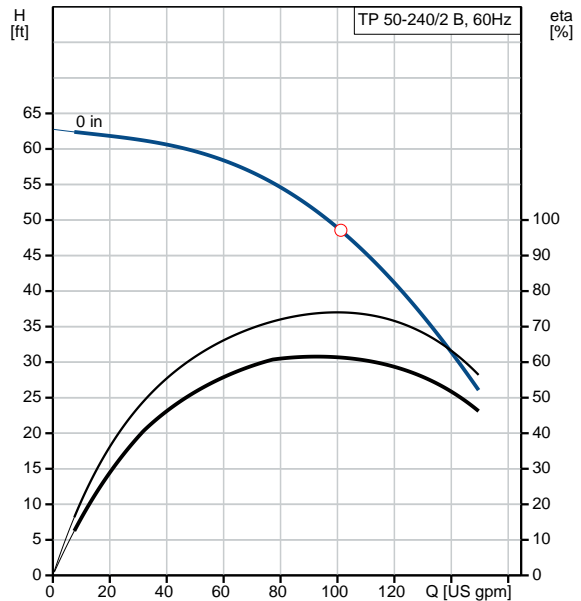
2/20/2018

Position	Count	Description
		Starting current: 38,7-35/17,5 A
		Cos phi - power factor: 93
		Rated speed: 3450 rpm
		Motor efficiency at full load: 78.5 %
		Motor efficiency at 3/4 load: 85.0 %
		Motor efficiency at 1/2 load: 83.0 %
		Number of poles: 2
		Insulation class (IEC 85): B
		Others:
		Net weight: 87.3 lb
		Gross weight: 91 lb
		Shipping volume: 2.33 ft ³

96411821 TP 50-240/2 B 60 Hz



Description	Value
General information:	
Product name:	TP 50-240/2 B A-G-Z-BUBE
Product No.:	96411821
EAN:	5700390525064
Technical:	
Speed for pump data:	3490 rpm
Rated flow:	101 US gpm
Rated head:	48.56 ft
Head max:	78.74 ft
Primary shaft seal:	BUBE
Approvals on motor nameplate:	UL Recognized Component, CSA
Curve tolerance:	ISO9906:2012 3B
Pump Number:	96405268
Pump version:	A
Materials:	
Pump housing:	Bronze
	DIN W.-Nr. 2.1093
Impeller:	Stainless steel
	DIN W.-Nr. 1.4301
	AISI 304
Material code:	Z
Installation:	
Maximum ambient temperature:	104 °F
Maximum operating pressure:	145 psi
Flange standard:	USA
Connect code:	G
Pipe connection:	2"
Liquid:	
Pumped liquid:	Water
Liquid temperature range:	5 .. 284 °F
Liquid temperature during operation:	68 °F
Density:	62.29 lb/ft ³
Electrical data:	
Motor type:	Baldor, TEFC
Rated power - P2:	2 HP
KVA code:	H
Main frequency:	60 Hz
Rated voltage:	3 x 208-230/460 V
Service factor:	1,15
Rated current:	5,7-5,4/2,7 A
Starting current:	38,7-35/17,5 A
Load current:	6,5-6,2/3,1 A
Cos phi - power factor:	93
Rated speed:	3450 rpm
Motor efficiency at full load:	78.5 %
Motor efficiency at 3/4 load:	85.0 %
Motor efficiency at 1/2 load:	83.0 %
Number of poles:	2
Insulation class (IEC 85):	B
Motor protection:	NONE
Motor Number:	85900705
Others:	





Company name:

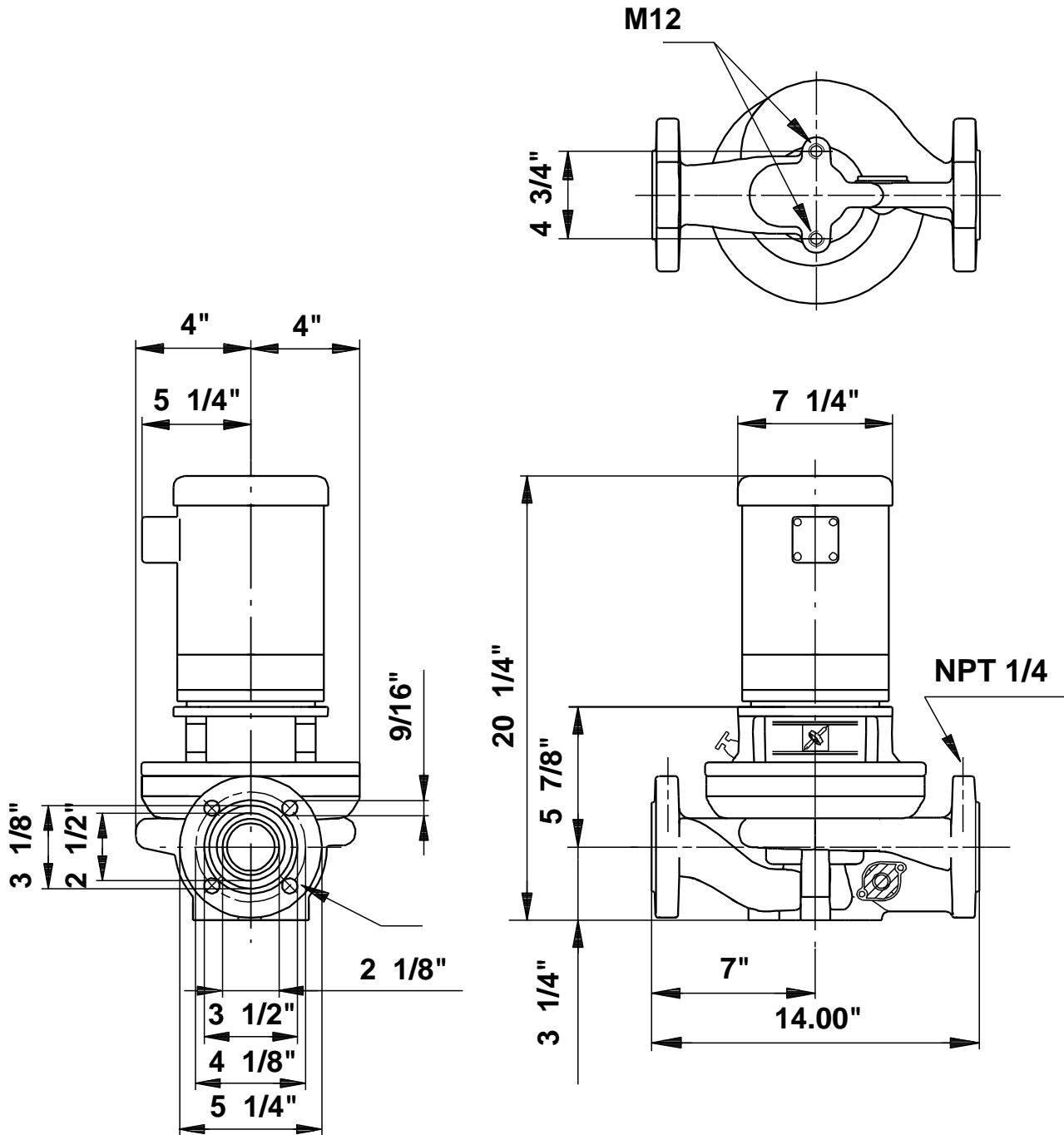
Created by:

Phone:

Date: 2/20/2018

Description	Value
Net weight:	87.3 lb
Gross weight:	91 lb
Shipping volume:	2.33 ft ³
Country code:	Namreg

96411821 TP 50-240/2 B 60 Hz



Note! All units are in [mm] unless otherwise stated.
 Disclaimer: This simplified dimensional drawing does not show all details.

96411821 TP 50-240/2 B 60 Hz



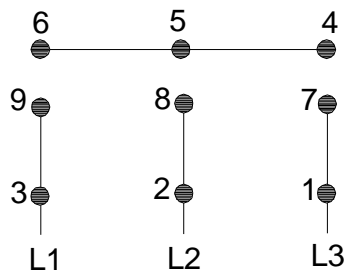
WARNING

MOTOR MUST BE GROUNDED IN ACCORDANCE WITH THE NATIONAL ELECTRICAL CODE AND LOCAL CODES BY TRAINED PERSONNEL TO PREVENT SERIOUS ELECTRICAL SHOCKS.

TO SERVICE MOTOR, DISCONNECT POWER SOURCE FROM MOTOR AND ANY ACCESSORY DEVICES AND ALLOW MOTOR TO COME TO A COMPLETE STAND STILL.

LOW VOLTAGE

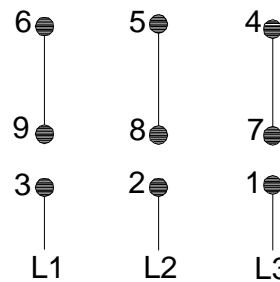
60Hz. 208-230V



HIGH VOLTAGE

60Hz: 460V

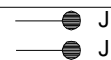
50Hz: 400V



96569464

INTERCHANGE ANY TWO LINE WIRES TO REVERSE ROTATION

THERMOSTAT LEADS (WHEN PROVIDED)





Company name:

Created by:

Phone:

Date: 2/20/2018

Order Data:

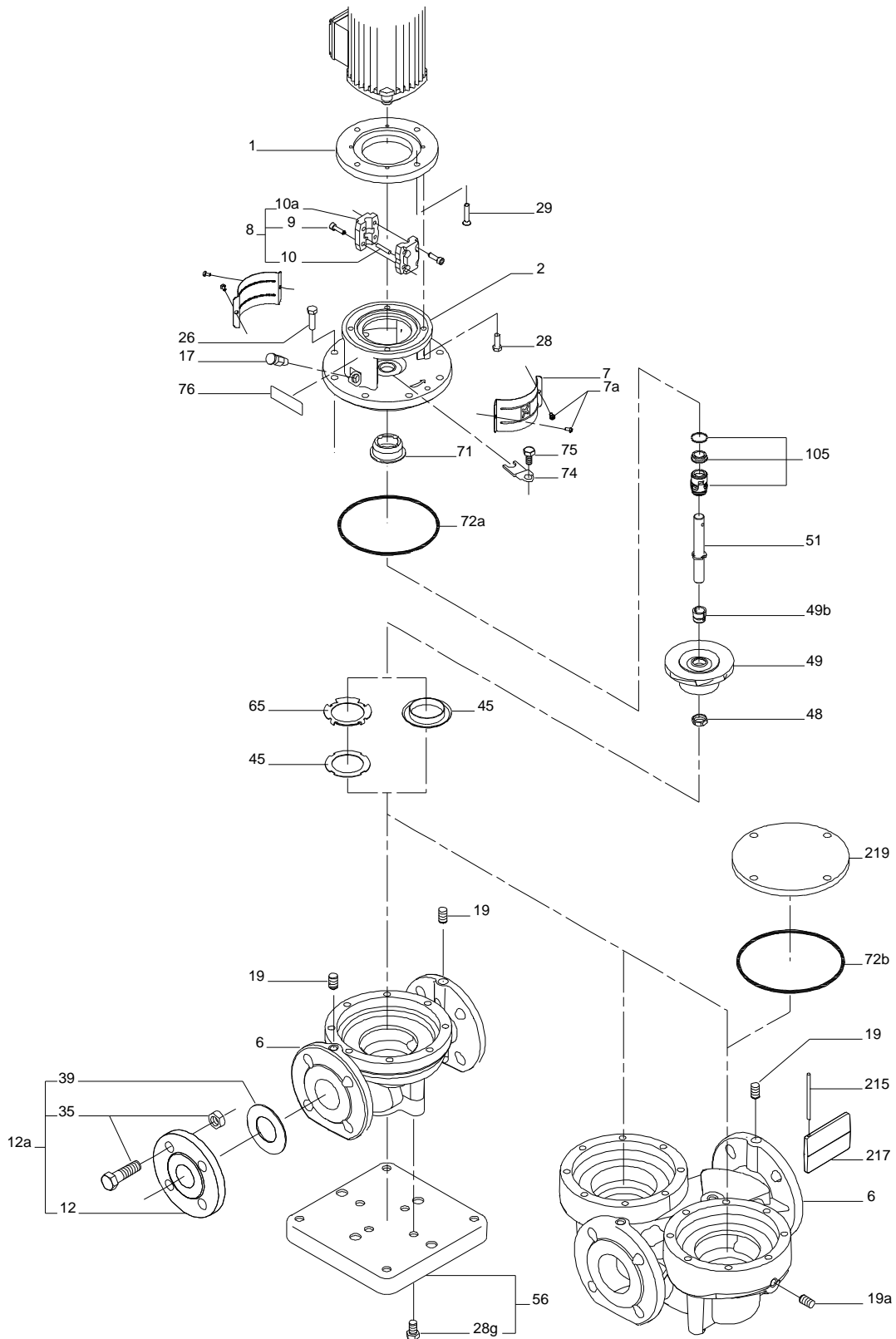
Product name: TP 50-240/2 B A-G-Z-BUBE

Amount: 1

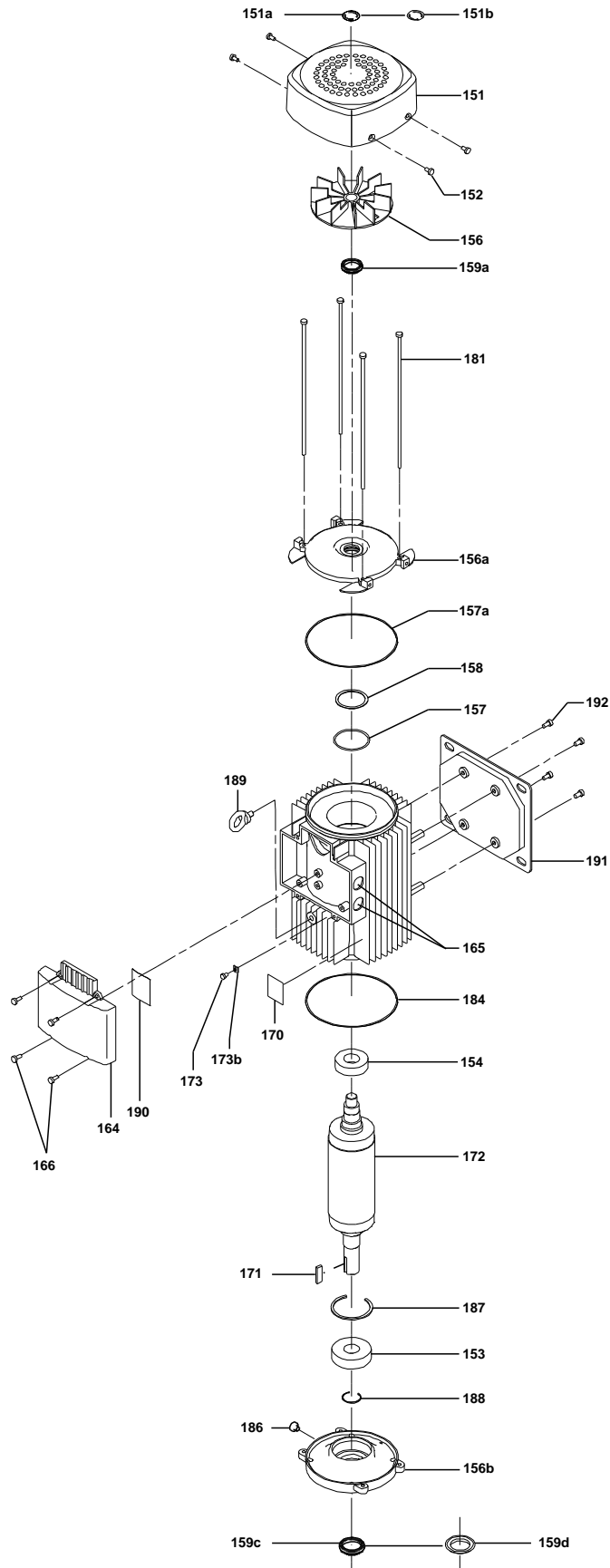
Product No.: 96411821

Total: Price on request

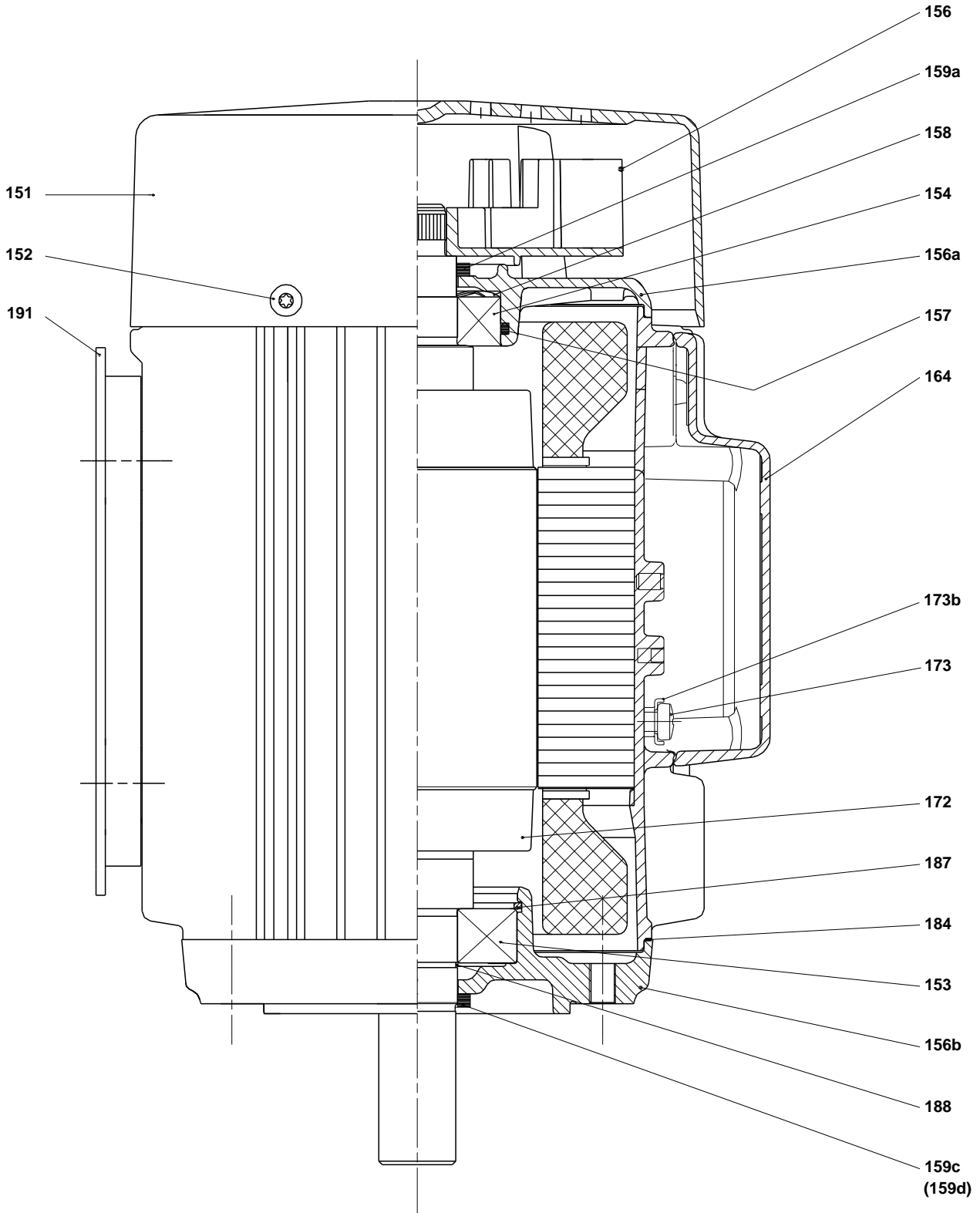
Exploded view (tm009281 2201)



Exploded view (tm030553)



Sectional drawing (TM031465)



Parts list TP 50-240/2 B, Prod number 96411821

Valid from 8.11.2013 (1345)

Position	Description	Annotation	Classification data	Part No.	Count	Unit
-	Pump w/o motor				1	pcs
	Pump housing				1	
2	Motor stool				1	
6	Pump housing				1	
7	Coupling guard				2	
7a	Pan head screw				4	
9	Hex socket head cap screw		Designation: DIN 912		4	
			Length: 20			
			Thread: M6			
10	Shaft pin		Diameter: 5		1	
			Length: 26			
10a	Coupling half				2	
17	Air vent screw				1	
19	Pipe plug				2	
26	Hex head screw		Length: 28		8	
			Thread: M10			
45	Teflon ring				1	
48	Split cone nut				1	
49	Impeller cpl.				1	
49b	Split cone				1	
65	Neck ring				1	
72a	O-ring		Diameter: 154		1	
			Material type: EPDM			
			Thickness: 4			
76	Nameplate				1	
105	Shaft seal		Material type: EPDM		1	
+	Motor				1	pcs