

|                       |                        |                 |
|-----------------------|------------------------|-----------------|
| PROJECT: _____        | UNIT TAG: _____        | QUANTITY: _____ |
| REPRESENTATIVE: _____ | TYPE OF SERVICE: _____ | DATE: _____     |
| ENGINEER: _____       | SUBMITTED BY: _____    | DATE: _____     |
| CONTRACTOR: _____     | APPROVED BY: _____     | DATE: _____     |
|                       | ORDER NO.: _____       | DATE: _____     |

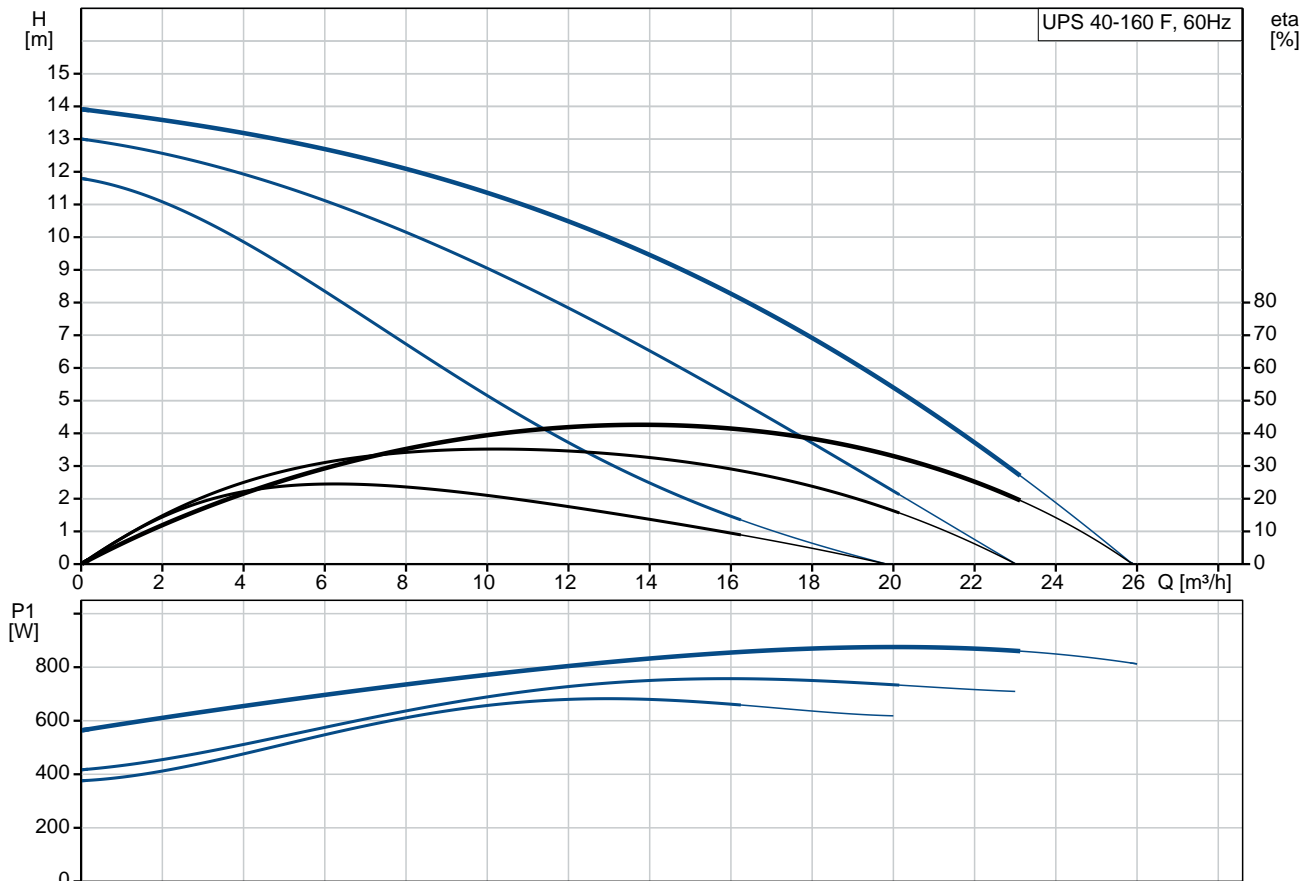


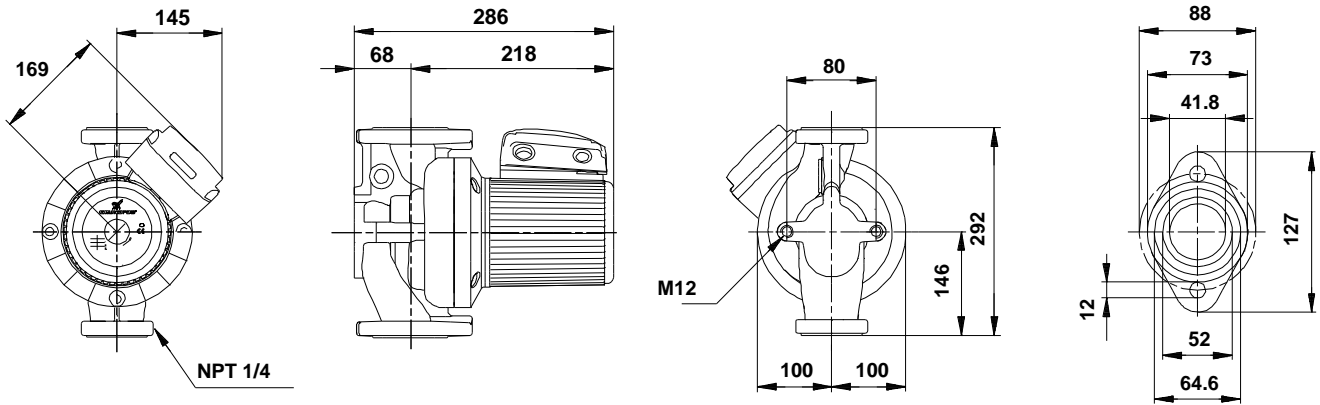
### UPS 40-160 F

Circulator pumps

Note! Product picture may differ from actual product

| Conditions of Service   | Pump Data                               | Motor Data                |
|-------------------------|---|---------------------------|
| Flow: _____             | Maximum operating pressure: 10 bar      | Max. power input: 890 W   |
| Head: _____             | Liquid temperature range: -10 .. 120 °C | Rated voltage: 115 V      |
| Efficiency: _____       | Maximum ambient temperature: 40 °C      | Mains frequency: 60 Hz    |
| Liquid: Water           | Approvals: CUL                          | Enclosure class: X4D      |
| Temperature: 60 °C      | Type of connection: F                   | Insulation class: H       |
| NPSH required: m        | Flange standard: USA Oval               | Motor protection: CONTACT |
| Viscosity: _____        | Pipe connection: GF 40/43               | Thermal protection: INT.  |
| Specific Gravity: 0.985 | Product number: On request              |                           |





**Materials:**

Pump housing: Cast iron  
 EN-JL1040  
 ASTM 35 B - 40 B

Impeller: Stainless steel  
 DIN W.-Nr. 1.4301  
 AISI 304

## Tender Text



Note! Product picture may differ from actual product

Product No.: On request

### UPS 40-160 F

The pump is of the canned rotor type, i.e. pump and motor form an integral unit without shaft seal and with only two gaskets for sealing. The bearings are lubricated by the pumped liquid.

In order to avoid problems in connection with disposal, great importance has been attached to using as few different materials as possible.

The pump is characterized by:

- \* 3 speed motor.
- \* Ceramic radial bearings.
- \* Carbon axial bearing.
- \* Stainless steel rotor can, bearing plate

and rotor cladding.

- \* Aluminium alloy stator housing.
- \* Cast iron pump housing.
- \* Stator with built-in thermal switch.

The motor is a 1-phase motor.

The pump is supplied with a standard module in the terminal box.

The standard module is to be connected to the mains supply via external contactor.

### Controls:

Relay: Y

### Liquid:

Pumped liquid: Water  
Liquid temperature range: -10 .. 120 °C  
Liquid temperature during operation: 60 °C  
Density: 983.2 kg/m<sup>3</sup>

### Technical:

Approvals on nameplate: CUL

### Materials:

Pump housing: Cast iron  
EN-JL1040  
ASTM 35 B - 40 B  
Impeller: Stainless steel  
DIN W.-Nr. 1.4301

AISI 304

**Installation:**


Range of ambient temperature: 0 .. 40 °C  
Maximum operating pressure: 10 bar  
Flange standard: USA Oval  
Type of connection: F  
Pipe connection: GF 40/43  
Pressure rating: 145 psi  
Port-to-port length: 292 mm

**Electrical data:**

Power input in speed 1: 690 W  
Power input in speed 2: 760 W  
Max. power input: 890 W  
Mains frequency: 60 Hz  
Rated voltage: 1 x 115 V  
Current in speed 1: 6.95 A  
Current in speed 2: 7.45 A  
Current in speed 3: 8.4 A  
Cos phi in speed 1: 0,86  
Cos phi in speed 2: 0,89  
Cos phi: 0,92  
Capacitor size - run: 80 µF/250 V  
Enclosure class (IEC 34-5): X4D  
Insulation class (IEC 85): H

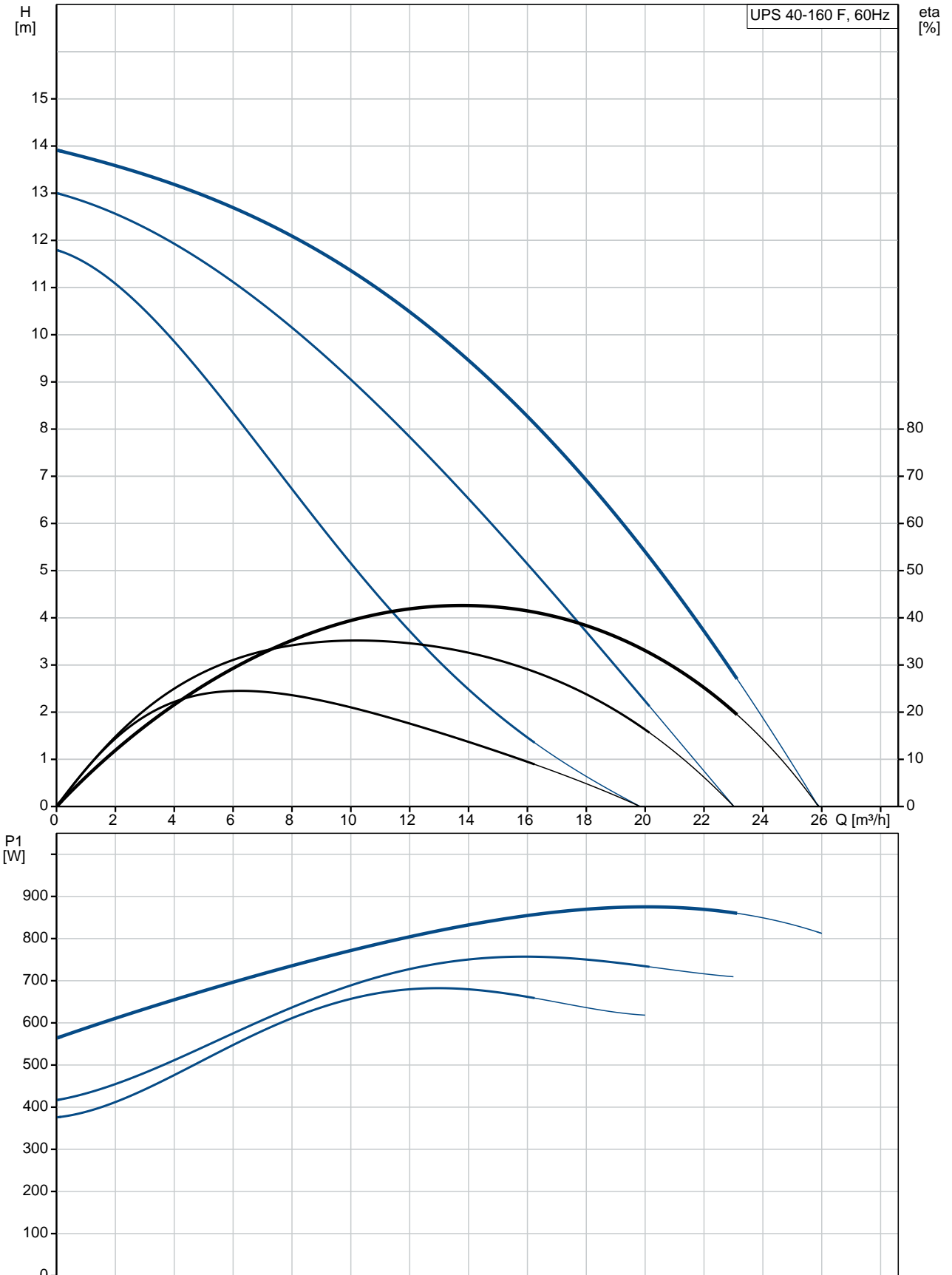
**Others:**

Net weight: 20.6 kg  
Gross weight: 25.1 kg  
Shipping volume: 0.098 m<sup>3</sup>

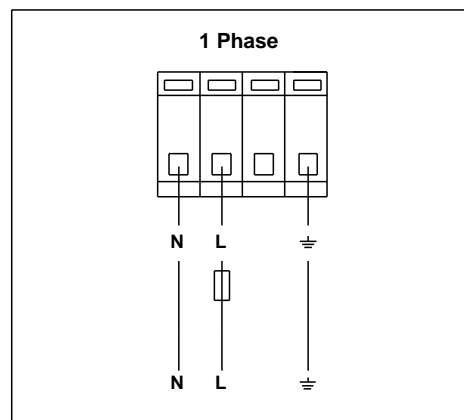
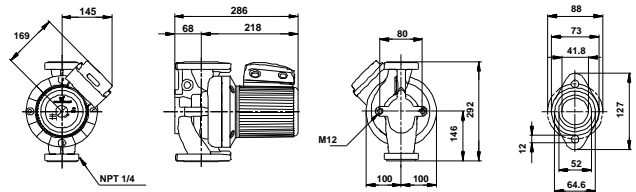
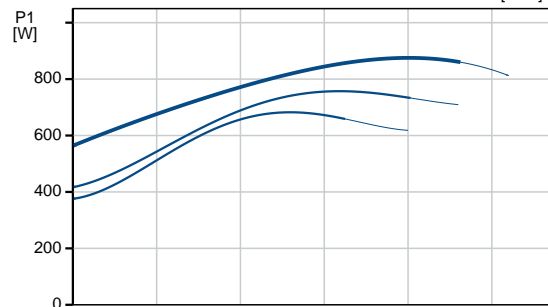
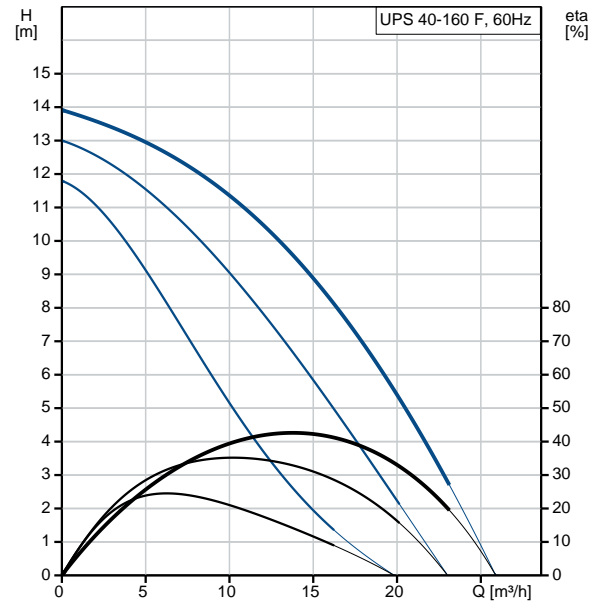
| Position | Qty. | Description  |
|----------|------|--|
|          | 1    | <p><b>UPS 40-160 F</b></p>  <p style="text-align: center;"><b>Note! Product picture may differ from actual product</b></p> <p>Product No.: On request<br/>           The pump is of the canned rotor type, i.e. pump and motor form an integral unit without shaft seal and with only two gaskets for sealing.<br/>           The bearings are lubricated by the pumped liquid.</p> <p>In order to avoid problems in connection with disposal, great importance has been attached to using as few different materials as possible.</p> <p>The pump is characterized by:</p> <ul style="list-style-type: none"> <li>* 3 speed motor.</li> <li>* Ceramic radial bearings.</li> <li>* Carbon axial bearing.</li> <li>* Stainless steel rotor can, bearing plate and rotor cladding.</li> <li>* Aluminium alloy stator housing.</li> <li>* Cast iron pump housing.</li> <li>* Stator with built-in thermal switch.</li> </ul> <p>The motor is a 1-phase motor.</p> <p>The pump is supplied with a standard module in the terminal box.<br/>           The standard module is to be connected to the mains supply via external contactor.</p> <p><b>Controls:</b><br/>           Relay: Y</p> <p><b>Liquid:</b><br/>           Pumped liquid: Water<br/>           Liquid temperature range: -10 .. 120 °C<br/>           Liquid temperature during operation: 60 °C<br/>           Density: 983.2 kg/m<sup>3</sup></p> <p><b>Technical:</b><br/>           Approvals on nameplate: CUL</p> <p><b>Materials:</b><br/>           Pump housing: Cast iron<br/>                             EN-JL1040<br/>                             ASTM 35 B - 40 B<br/>           Impeller: Stainless steel<br/>                             DIN W.-Nr. 1.4301<br/>                             AISI 304</p> |

| Position | Qty. | Description  |
|----------|------|--|
|          |      | <p><b>Installation:</b></p> <p>Range of ambient temperature: 0 .. 40 °C<br/>           Maximum operating pressure: 10 bar<br/>           Flange standard: USA Oval<br/>           Type of connection: F<br/>           Pipe connection: GF 40/43<br/>           Pressure rating: 145 psi<br/>           Port-to-port length: 292 mm</p> <p><b>Electrical data:</b></p> <p>Power input in speed 1: 690 W<br/>           Power input in speed 2: 760 W<br/>           Max. power input: 890 W<br/>           Mains frequency: 60 Hz<br/>           Rated voltage: 1 x 115 V<br/>           Current in speed 1: 6.95 A<br/>           Current in speed 2: 7.45 A<br/>           Current in speed 3: 8.4 A<br/>           Cos phi in speed 1: 0,86<br/>           Cos phi in speed 2: 0,89<br/>           Cos phi: 0,92<br/>           Capacitor size - run: 80 µF/250 V<br/>           Enclosure class (IEC 34-5): X4D<br/>           Insulation class (IEC 85): H</p> <p><b>Others:</b></p> <p>Net weight: 20.6 kg<br/>           Gross weight: 25.1 kg<br/>           Shipping volume: 0.098 m³</p> |

## On request UPS 40-160 F 60 Hz



| Description                          | Value                   |
|--------------------------------------|-------------------------|
| <b>General information:</b>          |                         |
| Product name:                        | UPS 40-160 F            |
| Product No:                          | On request              |
| EAN number:                          | On request              |
| <b>Technical:</b>                    |                         |
| Speed no:                            | 3                       |
| Head max:                            | 160 dm                  |
| Approvals on nameplate:              | CUL                     |
| Model:                               | C                       |
| <b>Materials:</b>                    |                         |
| Pump housing:                        | Cast iron               |
|                                      | EN-JL1040               |
|                                      | ASTM 35 B - 40 B        |
| Impeller:                            | Stainless steel         |
|                                      | DIN W.-Nr. 1.4301       |
|                                      | AISI 304                |
| <b>Installation:</b>                 |                         |
| Range of ambient temperature:        | 0 .. 40 °C              |
| Maximum operating pressure:          | 10 bar                  |
| Flange standard:                     | USA Oval                |
| Type of connection:                  | F                       |
| Pipe connection:                     | GF 40/43                |
| Pressure rating:                     | 145 psi                 |
| Port-to-port length:                 | 292 mm                  |
| <b>Liquid:</b>                       |                         |
| Pumped liquid:                       | Water                   |
| Liquid temperature range:            | -10 .. 120 °C           |
| Liquid temperature during operation: | 60 °C                   |
| Density:                             | 983.2 kg/m <sup>3</sup> |
| <b>Electrical data:</b>              |                         |
| Power input in speed 1:              | 690 W                   |
| Power input in speed 2:              | 760 W                   |
| Max. power input:                    | 890 W                   |
| Mains frequency:                     | 60 Hz                   |
| Rated voltage:                       | 1 x 115 V               |
| Current in speed 1:                  | 6.95 A                  |
| Current in speed 2:                  | 7.45 A                  |
| Current in speed 3:                  | 8.4 A                   |
| Cos phi in speed 1:                  | 0,86                    |
| Cos phi in speed 2:                  | 0,89                    |
| Cos phi:                             | 0,92                    |
| Capacitor size - run:                | 80 µF/250 V             |
| Enclosure class (IEC 34-5):          | X4D                     |
| Insulation class (IEC 85):           | H                       |
| Motor protec:                        | CONTACT                 |
| Thermal protec:                      | INT.                    |
| R a:                                 | 2.85 - 3.75 ohm         |
| R s1:                                | 1.1 - 1.44 ohm          |
| R s2:                                | 1.94 - 2.55 ohm         |
| <b>Controls:</b>                     |                         |
| Relay:                               | Y                       |
| Pos term box:                        | 1.30H                   |







Company name:

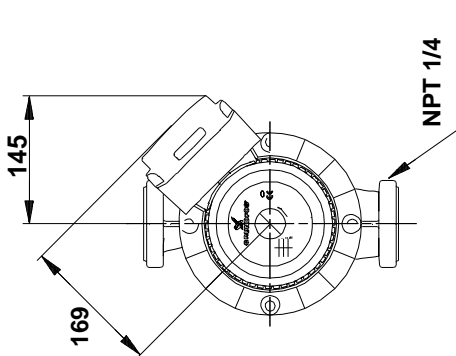
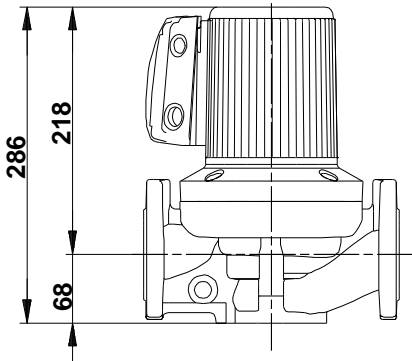
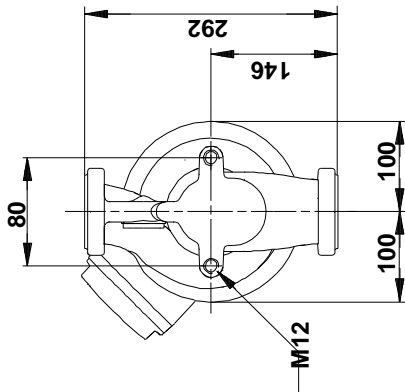
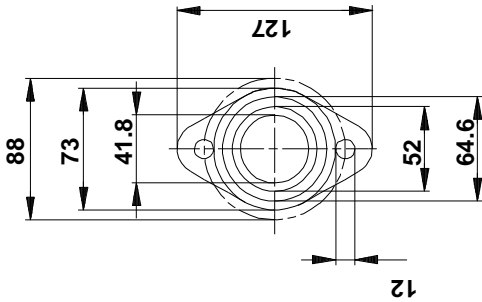
Created by:

Phone:

Date: 28/11/2017

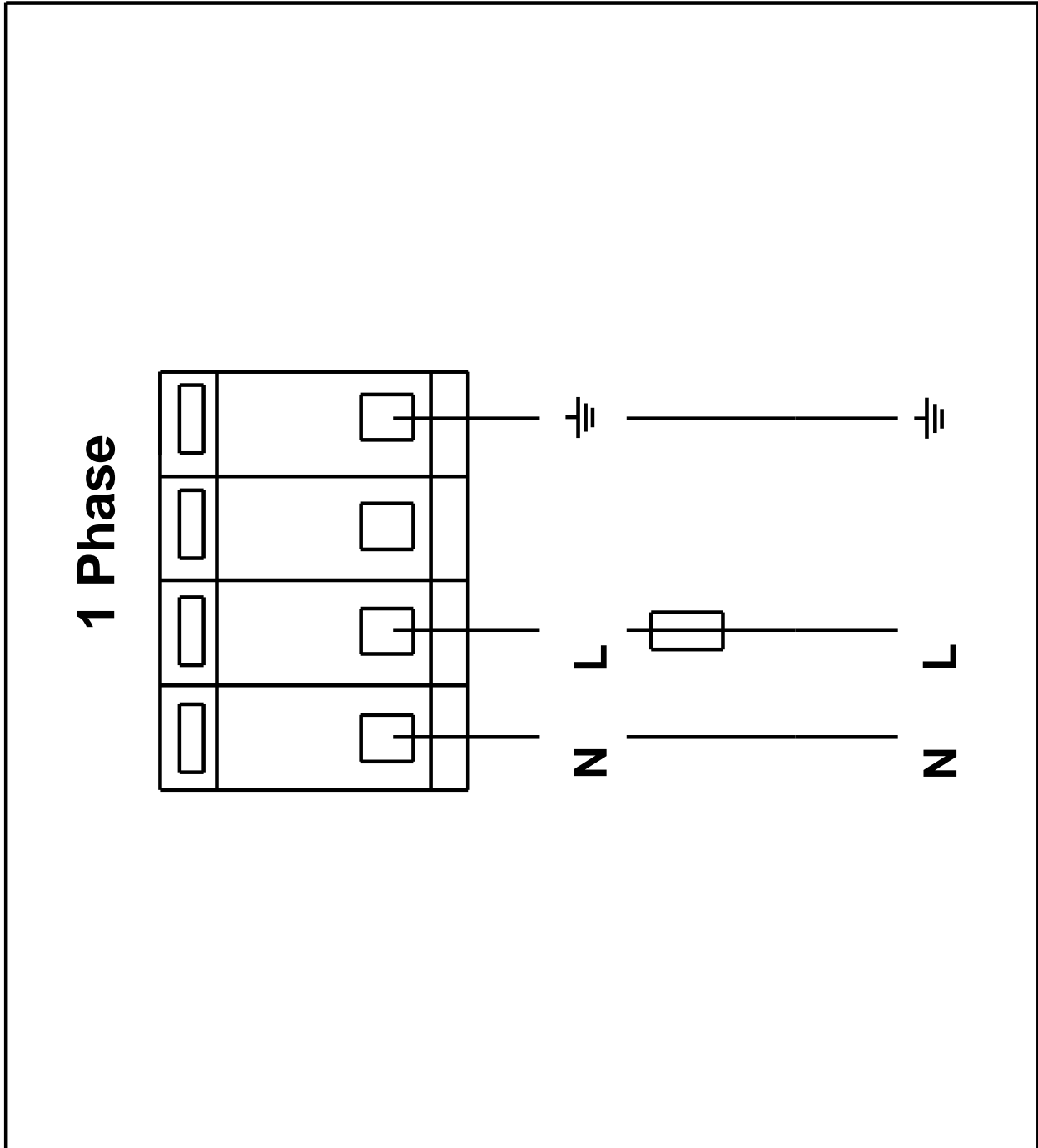
| Description      | Value                |
|------------------|----------------------|
| <b>Others:</b>   |                      |
| Net weight:      | 20.6 kg              |
| Gross weight:    | 25.1 kg              |
| Shipping volume: | 0.098 m <sup>3</sup> |
| Sales region:    | Namreg               |

## On request UPS 40-160 F 60 Hz



Note! All units are in [mm] unless others are stated.  
Disclaimer: This simplified dimensional drawing does not show all details.

**On request UPS 40-160 F 60 Hz**



Note! All units are in [mm] unless others are stated.



Company name:

Created by:

Phone:

Date: 28/11/2017

---

**Order Data:**

Product name: UPS 40-160 F

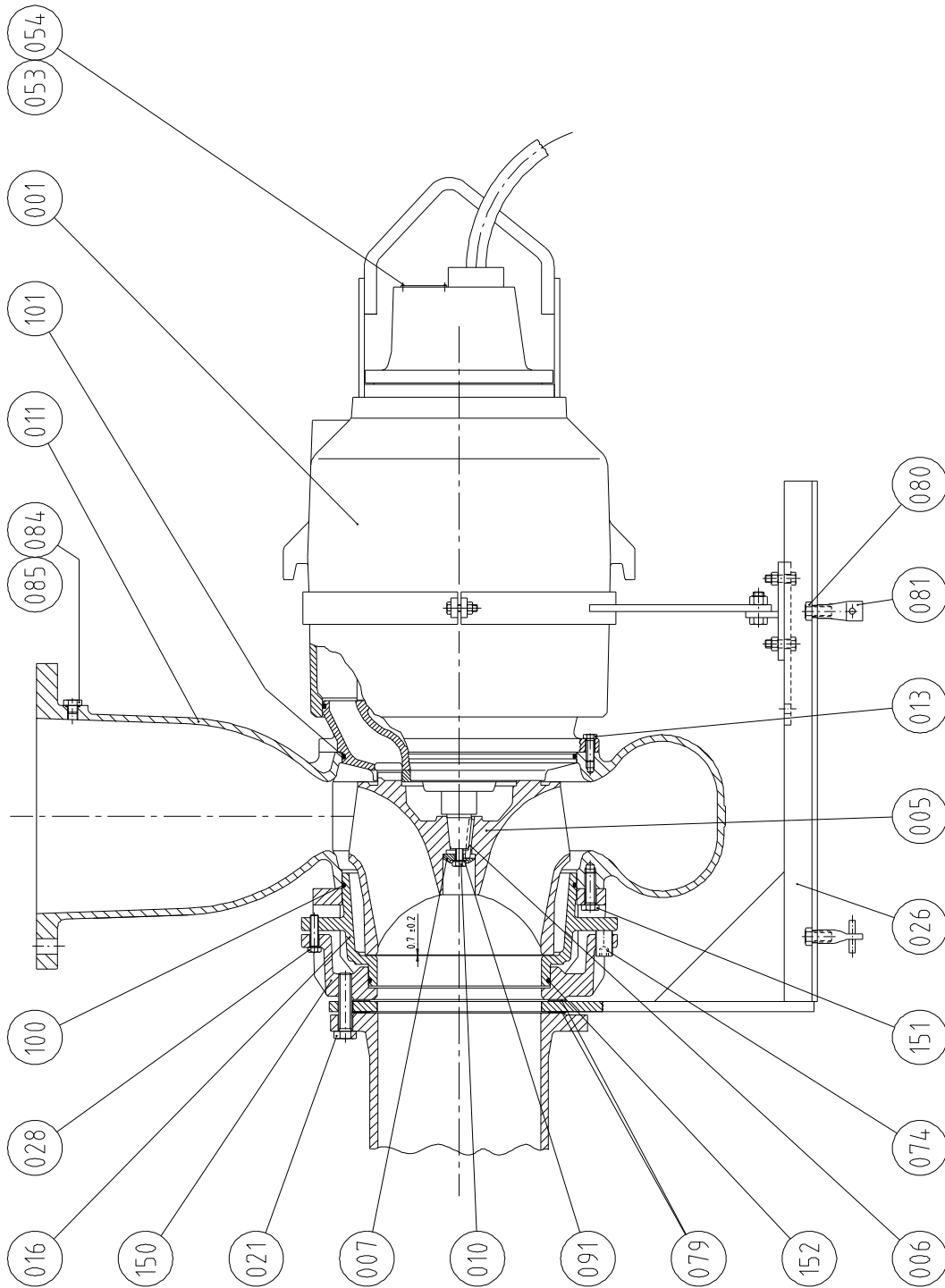
Amount: 1

Product No: On request

Total: Price on request

---

## Sectional drawing (A\_944781)



Sectional drawing (A\_944775)

