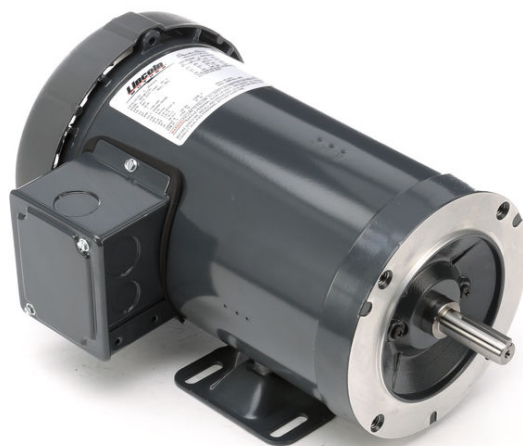


PRODUCT INFORMATION PACKET



Model No: LM33573
Catalog No: LM33573
3 HP General Purpose Motor, 3 phase, 1800 RPM, 230/460 V, 182TC Frame, TEFC
Three Phase TEFC Motors



Regal and Leeson are trademarks of Regal Beloit Corporation or one of its affiliated companies.
©2019 Regal Beloit Corporation, All Rights Reserved. MC017097E

The Regal logo is the word "REGAL" in a bold, sans-serif font, set within a grey, trapezoidal shape. It is positioned on a vertical blue gradient bar that runs down the right side of the page.

REGAL



Nameplate Specifications

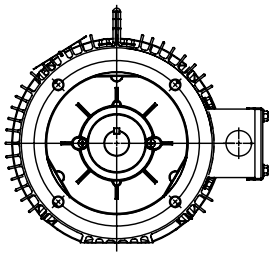
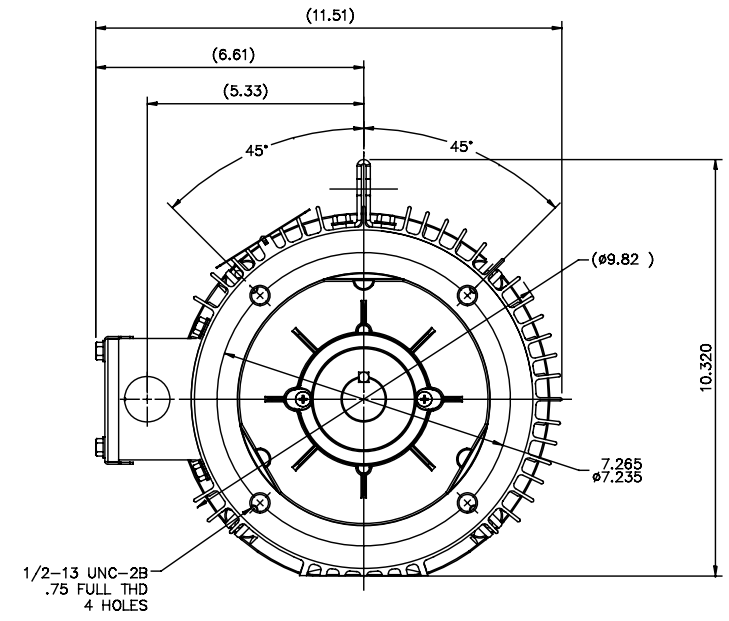
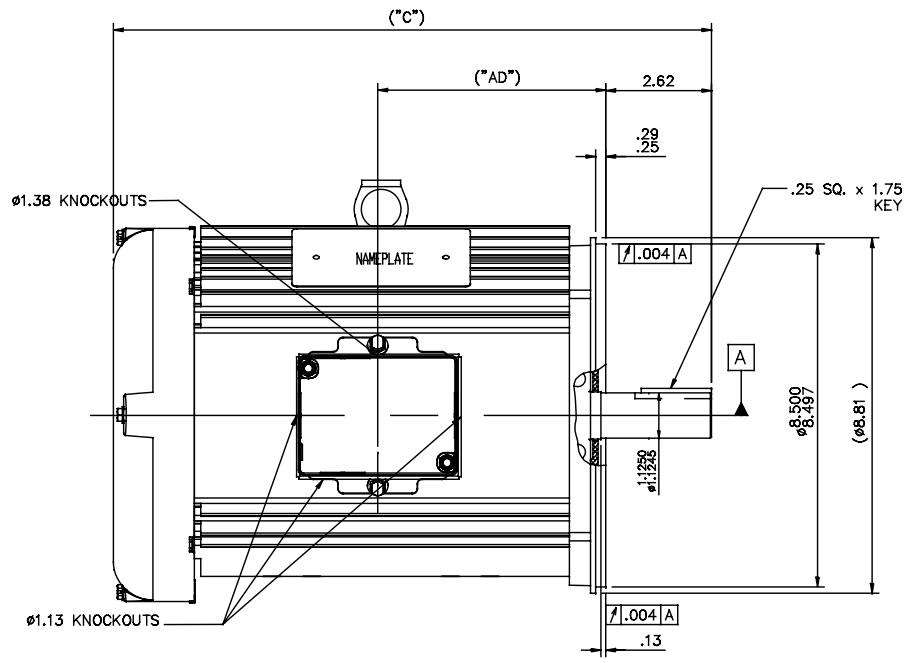
Output HP	3 Hp	Output KW	2.2 kW
Frequency	60 Hz	Voltage	230/460 V
Current	7.8/3.9 A	Speed	1770 rpm
Service Factor	1.25	Phase	3
Efficiency	89.5 %	Power Factor	80.5
Duty	Continuous	Insulation Class	F
Design Code	B	KVA Code	K
Frame	182TC	Enclosure	Totally Enclosed Fan Cooled
Thermal Protection	No	Ambient Temperature	40 °C
Drive End Bearing Size	6206	Opp Drive End Bearing Size	6205
UL	Recognized	CSA	Y
CE	Y	IP Code	43

Technical Specifications

Electrical Type	Squirrel Cage Induction Run	Starting Method	Across The Line
Poles	4	Rotation	Reversible
Resistance Main	6.08 Ohms	Mounting	Round
Motor Orientation	Horizontal	Drive End Bearing	Ball
Opp Drive End Bearing	Ball	Frame Material	Aluminum
Shaft Type	T	Overall Length	14.96 in
Frame Length	9.50 in	Shaft Diameter	1.125 in
Shaft Extension	2.62 in	Assembly/Box Mounting	F1/F2 CAPABLE

This is an uncontrolled document once printed or downloaded and is subject to change without notice. Date Created:01/11/2019

036180LN



DASH NO	"C"	"AD"
950	14.96	5.65
1100	16.46	7.15

TOLERANCES UNLESS SPECIFIED		REGAL™ Regal Beloit America, Inc.		DRAWN	SL 01/07/16
DEC.	INCHES	CHK	SYED 01/07/16	APPD	SYED 01/07/16
.X	±.1	TITLE 182/184T-TEFC-C FACE OUTLINE			
.XX	±.03	SCALE 3=8			
.XXX	±.005	REF 036120LN			
A	NEW DRAWING	SL	01/07/16	CHK	FMF
	REVISION	BY & DATE		FINISH	PREV
		CHK	ANG ±1/2°	RFP	CAD FILE 036180
THIS DRAWING IN DESIGN AND DETAIL IS OUR PROPERTY AND MUST NOT BE USED EXCEPT IN CONNECTION WITH OUR WORK. ALL RIGHTS OF DESIGN AND INVENTION ARE RESERVED. THIS IS AN ELECTRONICALLY GENERATED DOCUMENT - DO NOT SCALE THIS PRINT.				SIZE	DRAWING NO.
		DIST		B	036180LN
					REV. A

ERROR: undefined
OFFENDING COMMAND: sc

STACK:

1

1

-savelevel-



1051 CHEYENNE AVE.
 GRAFTON, WI 53024
 PH. 262-277-8810

DATA VOLTS: 460

CERTIFICATION DATA SHEET

CONN. DIAGRAM: EE7308-LN
 OUTLINE: 036180LN
 WINDING: T84174

CAT #:

LM33573

FV 3

TYPICAL MOTOR PERFORMANCE DATA

HP	KW	SYNC RPM	FL RPM	FRAME	ENCLOSURE	TYPE	KVA CODE	DESIGN	
3	2.2	1800	1770	182TC	TEFC	TFV	K	B	
PH	HZ	VOLTS	AMPS	START TYPE	DUTY	INSL	S.F.	AMB	ELEV.
3	60/50	230/460#190-208/380-415	7.8/3.9&9.4/9/4.7-4.5	ACROSS THE LINE	CONT	F	1.15	40	3300

F.L. EFF	89.5	3/4 LD EFF	89.6	1/2 LD EFF	87.7	GTD EFF	62.7	ELECT. TYPE	SQ CAGE IND RUN
F.L. PF	80.5	3/4 LD PF	73.8	1/2 LD PF	62.7	0.0			

F.L. TORQUE	LR AMPS @ 460 V	L.R. TORQUE	22.5 LB-FT	MAX. LOAD WK ²	0 LB-FT ²	B.D. TORQUE	36.0 LB-FT	F.L. RISE (° C)	40
8.9 LB-FT	33.5								

PRESSURE @ 3	0	SOUND	9	POWER	0.38	ROTOR WK ²	LB-FT ²	SAFE STALL TIME	10	STARTS/HOUR	2	MOTOR WGT	0
DBA		DBA		DBA		LB-FT ²		SEC.		LB.		LB.	

*** SUPPLEMENTAL INFORMATION ***

DE BRACKET TYPE	ODE BRACKET TYPE	MOUNT TYPE	MOTOR ORIENTATION	SEVERE DUTY	HAZARDOUS LOCATION	DRIP COVER	SCREENS	PAINT
C-FACE	STANDARD	ROUND	HORIZONTAL	NO	NONE	NO	NONE	WATTS/SAVER

BEARINGS	GREASE	SHAFT TYPE	SPECIAL DE	SPECIAL ODE	SHAFT MATERIAL	FRAME MATERIAL
DE ODE						
BALL BALL	POLYREX EM	T	NONE	NONE	ASI 1045 (C-240)	ALUMINUM
6206	6205					

THERMOSTATS	PROTECTORS	WDG RTD's	BRG RTD's	THERMISTORS	CONTROL	SPACE HEATERS
NONE	NOT	NONE	NONE	NONE	FALSE	NA

R1 (ohms/ph)	R2 (ohms/ph)	X1 (ohms/ph)	X2 (ohms/ph)	Xm (ohms/ph)	VIBRATION (in/sec)	FLOAT
0	0	0	0	0	0.150	ODE

* N O T E S *		INVERTER TORQUE: NONE INV. HP SPEED RANGE: NONE
		ENCODER: NONE
		BRAKE: NONE
		FT-LB: N/A
		VOLTAGE: NONE
		NONE PPR

DATE: 9/11/2018	UL: V-INS, CONST UL REC
-----------------	-------------------------

Data Sheet

Date: 9/11/2018

LM33573



Data @ 460 V

Motor Load Data

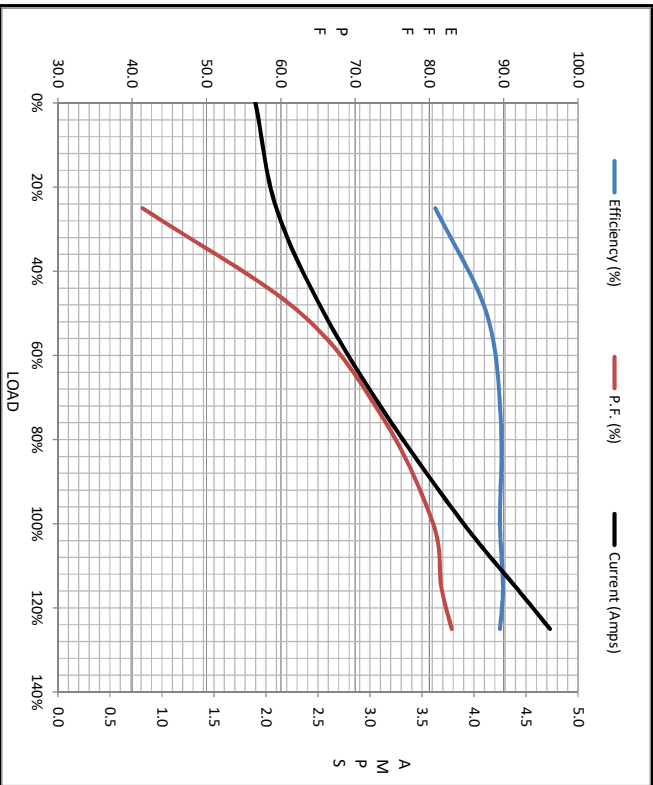
Load	0%	25%	50%	75%	100%	115%	125%	LR
Current (Amps)	1.90	2.10	2.56	3.2	3.9	4.4	4.7	33.5
Torque (ft-lb)	0.00	2.20	4.4	6.6	8.9	10.3	11.2	22.5
RPM	1800	1792	1785	1777	1770	1766	1755	0
P.F. (%)	6.9	80.8	87.7	89.6	89.5	89.9	89.5	0.0
		41.4	62.7	73.8	80.5	81.6	83.0	

Motor Speed Data

	LR	Pull-Up	BD	Rated	Idle
Speed (RPM)	0	900	1656	1770	1800
Current (Amps)	33.5	33.0	21.5	3.9	1.90
Torque (ft-lb)	22.5	21.0	36.0	8.9	0.00

Information Block

HP	3.0
Sync. RPM	1800
Frame	182
Enclosure	TEFC
Construction	TEV
Voltage	230/460#190-208/380-415 V
Frequency	60 Hz
Design	B
LR Code letter	K
Service Factor	1.15
Temp Rise @ FL	40 °C
Duty	CONT
Ambient	40 °C
Elevation	1,000 feet
Rotor/Shaft wk ²	0.38 Lb-Ft ²
Ref Wdg	T84174 FV
Sound Pressure @ 1M	0 dbA
VFD Rating	NONE
Outline Dwg	036180LN
Conn. Diag	EE7308-LN
Additional Specifications:	
0	
0	
EQUIV CKT (OHMS / PHASE)	
R1	R2
0.0000	0.0000
X1	X2
0.0000	0.0000
Xm	
0.0000	



Speed - Torque Curve

