

PRODUCT INFORMATION PACKET



Model No: AAN4S2TC61Q10
Catalog No: LM33591
2HP..1800RPM.182TC.TENV.230/460V.3PH.60HZ.CONT.40C.1.15SF.RIGID C-FACE.....INVERTER
DUTY.....
2000:1 With Encoder Provision



Regal and Leeson are trademarks of Regal Beloit Corporation or one of its affiliated companies.
©2018 Regal Beloit Corporation, All Rights Reserved. MC017097E



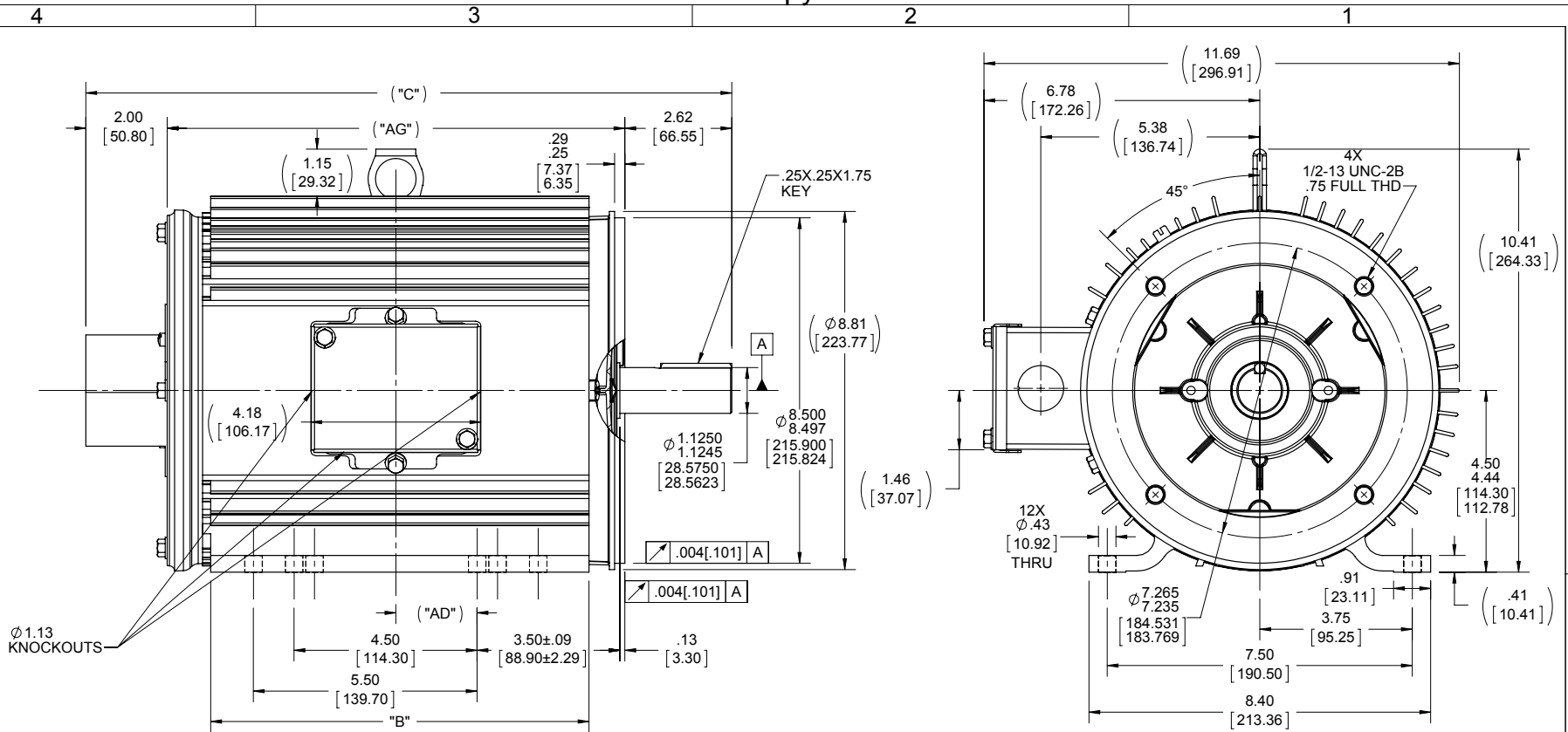


Nameplate Specifications

Output HP	2 Hp	Output KW	1.5 kW
Frequency	60 Hz	Voltage	230/460 V
Current	8.2/3.3 A	Speed	1770 rpm
Service Factor	1	Phase	3
Efficiency	83.5 %	Duty	Continuous
Insulation Class	F	Design Code	INV
KVA Code	P	Frame	182TC
Enclosure	Totally Enclosed Non Ventilated	Overload Protector	No
Ambient Temperature	40 °C	Drive End Bearing Size	6207
Opp Drive End Bearing Size	6206	UL	Recognized
CSA	Y	CE	Y
IP Code	43		

Technical Specifications

Electrical Type	Squirrel Cage Inverter Duty	Starting Method	Inverter Only
Poles	4	Rotation	Reversible
Mounting	Rigid base	Motor Orientation	HORIZONTAL
Drive End Bearing	BALL	Opp Drive End Bearing	BALL
Frame Material	Aluminum	Shaft Type	T
Overall Length	15.88 in	Frame Length	9.50 in
Shaft Diameter	1.125 in	Shaft Extension	2.62 in
Assembly/Box Mounting	F1/F2 CAPABLE		
Outline Drawing	036143LN-950	Connection Diagram	0501020LN



950	15.88	2.00	9.3	11.25	12
DASH NO	"C"	"AD"	"B"	"AG"	FOOT HOLES

DRAWING REVISION A		REVISION BY SAJID	DATE 06/05/2015	TOLERANCES UNLESS OTHERWISE SPECIFIED:		DRAWN BY SAJID	
ECO ECO-0068533		APPROVED BY SR	DATE 06/05/2015	DEC.	INCH	mm	ANGLE
ECO DESCRIPTION		NEW DRAWING		.X	±0.1	[±2.5]	±0.5°
<small>COPYRIGHT REGAL BELOIT AMERICA, INC. ALL RIGHTS RESERVED. PROPRIETARY AND CONFIDENTIAL INFORMATION - THIS DOCUMENT IS THE PROPERTY OF REGAL BELOIT AMERICA, INC. (OWNER) AND CONTAINS OWNER'S PROPRIETARY INFORMATION. ANY PERSON, CORPORATION OR OTHER FIRM RECEIVING IT IS DEEMED, BY RECEIVING IT, TO AGREE THAT IT, AND/OR ANY PART OF IT, SHALL NOT BE DISCLOSED TO ANY PERSON, CORPORATION OR OTHER ENTITY, DUPLICATED, AND/OR USED, EXCEPT AS EXPRESSLY APPROVED IN WRITING IN ADVANCE BY OWNER. THIS DOCUMENT SHALL BE RETURNED TO OWNER UPON REQUEST. IT MAY BE SUBJECT TO CERTAIN RESTRICTIONS UNDER APPLICABLE EXPORT CONTROL LAWS AND REGULATIONS.</small>				REMOVE BURRS & BREAK SHARP EDGES: .003/.015 [076/381] X 45° CORNER FILLETS: R.02 [51] MACHINED SURFACES: .125/3.2 mm SHOWN IN [BRACKETS]		DATE 06/05/2015	APPROVED BY SR
<small>REGAL™ Regal Beloit America, Inc.</small>				DESCRIPTION OUTLINE TENV-180 AL. FR.		MATERIAL	
<small>THIRD ANGLE PROJECTION</small>				REFERENCE 036130	PROCESS/FINISH	SIZE B	DRAWING NUMBER 036143LN
						SHEET 1 OF 1	



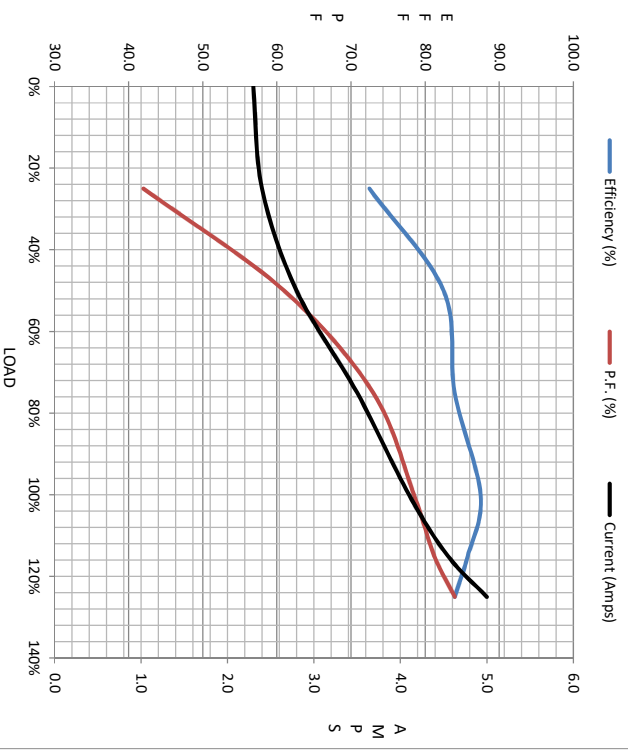
Load	Motor Load Data						LR
	0%	25%	50%	75%	100%	115%	
Current (Amps)	2.30	2.40	2.80	3.5	4.1	4.6	46.0
Torque (ft-lb)	0.00	2.20	4.4	6.7	9.0	10.2	11.3
HPM	1800	1790	1780	1755	1755	1751	1745
Efficiency (%)		72.5	82.5	84.0	87.5	85.8	84.0
P.F. (%)	10.5	42.0	61.0	73.0	78.5	81.3	84.0

Motor Speed Data

	LR	Pull-Up	BD	Rated	Idle
Speed (RPM)	0	130	1318	1755	1800
Current (Amps)	46.0	46.9	31.8	4.1	2.30
Torque (ft-lb)	34.0	34.0	49.3	9.0	0.00

Information Block

HP	3.0
Sync. RPM	1800
Frame	182
Enclosure	TENV
Construction	TTL
Voltage	230/460 V
Frequency	60 Hz
Design	A
LR Code letter	N
Service Factor	1.15
Temp Rise @ FL	75 °C
Duty	CONT
Ambient	40 °C
Elevation	1,000 feet
Rotor/Shaft wk ²	0.42 LB-Ft ²
Ref Wdg	T84180 NONE
Sound Pressure @ 1M	62 dBA
VFD Rating	CONSTANT 100:1
Outline Dwg	036143LN-950
Conn. Diag	0501020LN
Additional Specifications:	
0	
EQUIV CKT (OHMS / PHASE)	
R1	R2
1.5/80	1.8020
X1	X2
2.8380	2.0910
Xm	
94.1300	



Speed - Torque Curve

